

## Difference Shapes and Figures of Noises

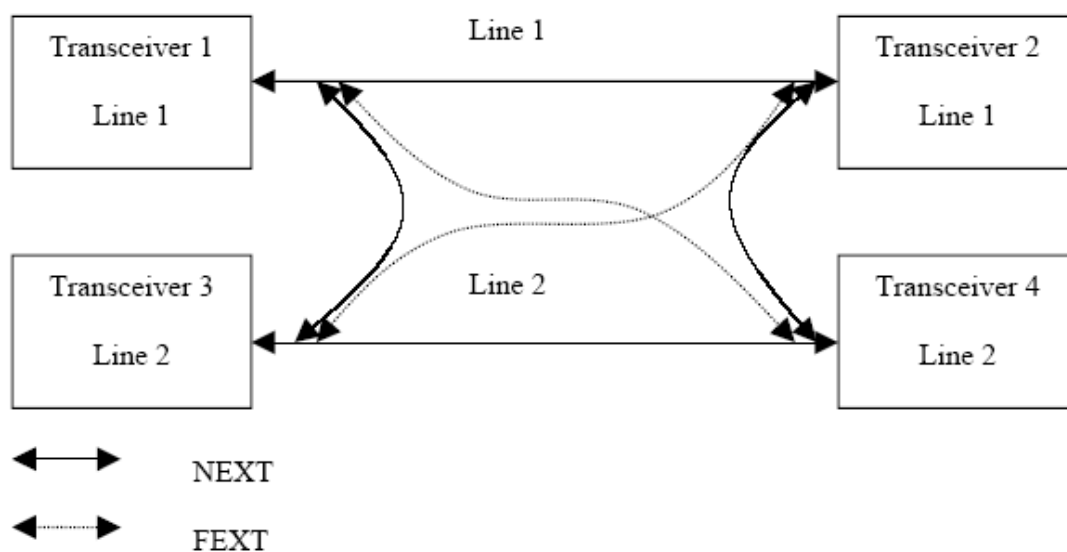


Figure 4

NEXT=Near End Crosstalk

FEXT=Far End Crosstalk

## Near-end Noise (crosstalk)

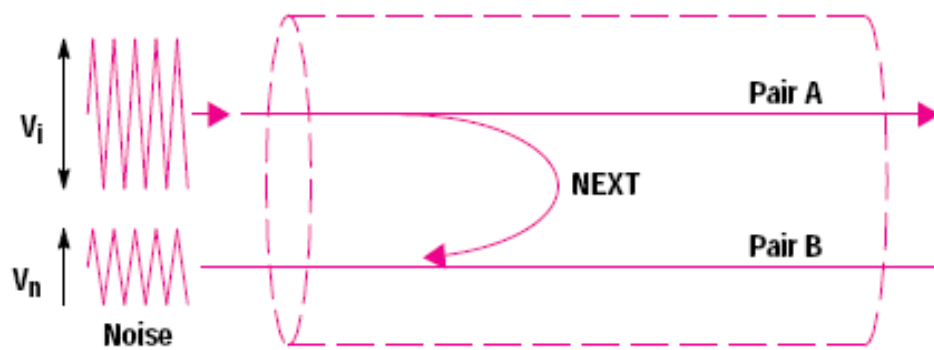


Figure 5-1

## Near-end Noise (crosstalk)

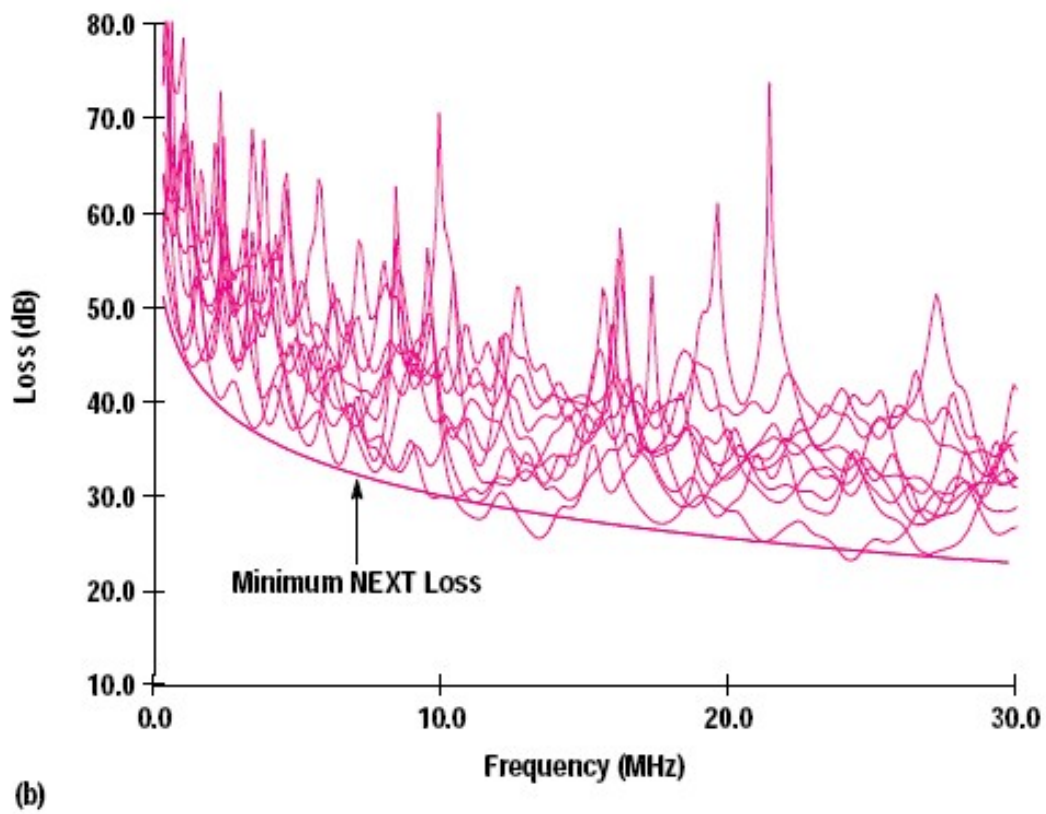


Figure 5-2

## Far-end Noise (crosstalk)

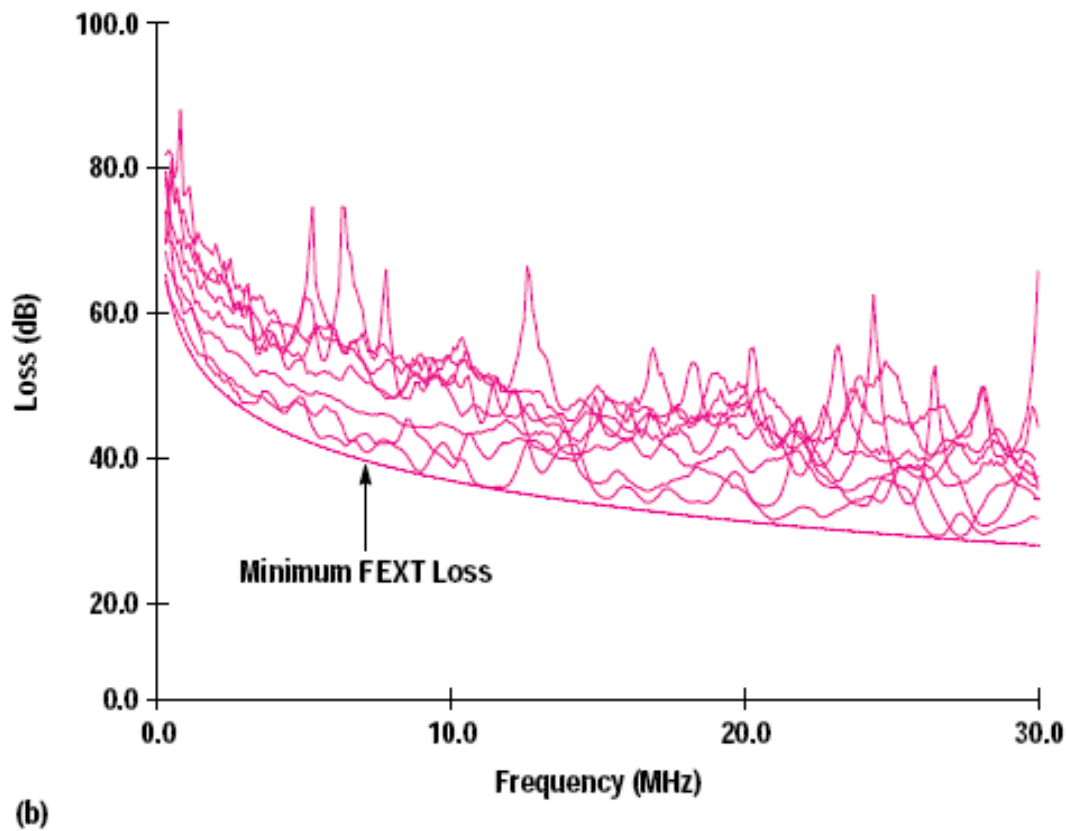
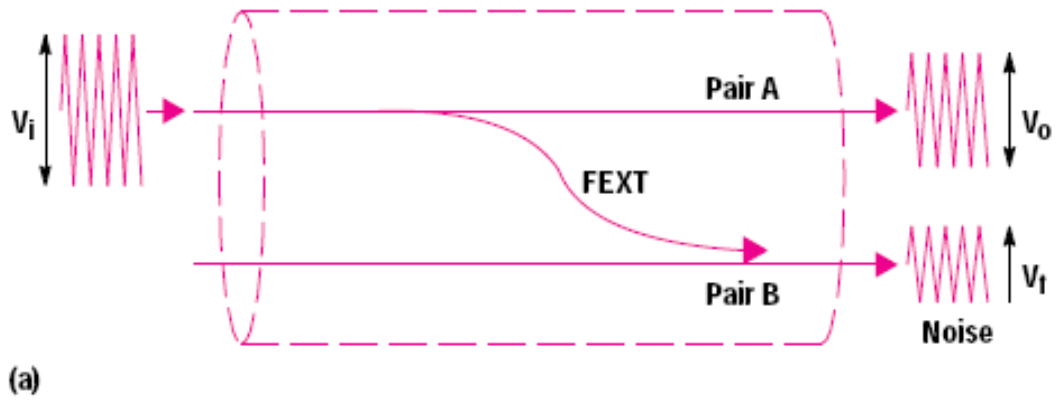
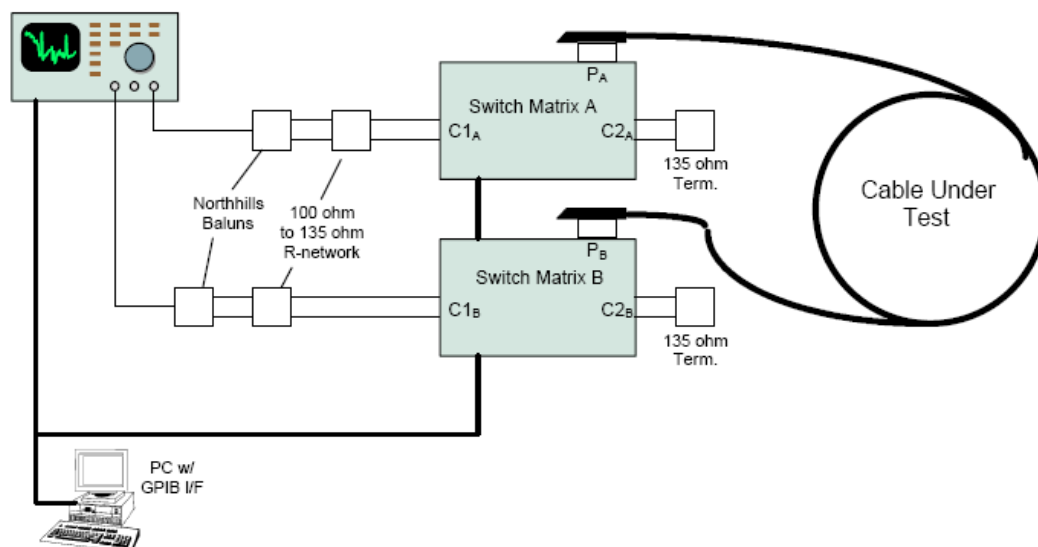


Figure 5 -3



**Test setup for propagation loss and pair-to-pair FEXT**

Figure 6

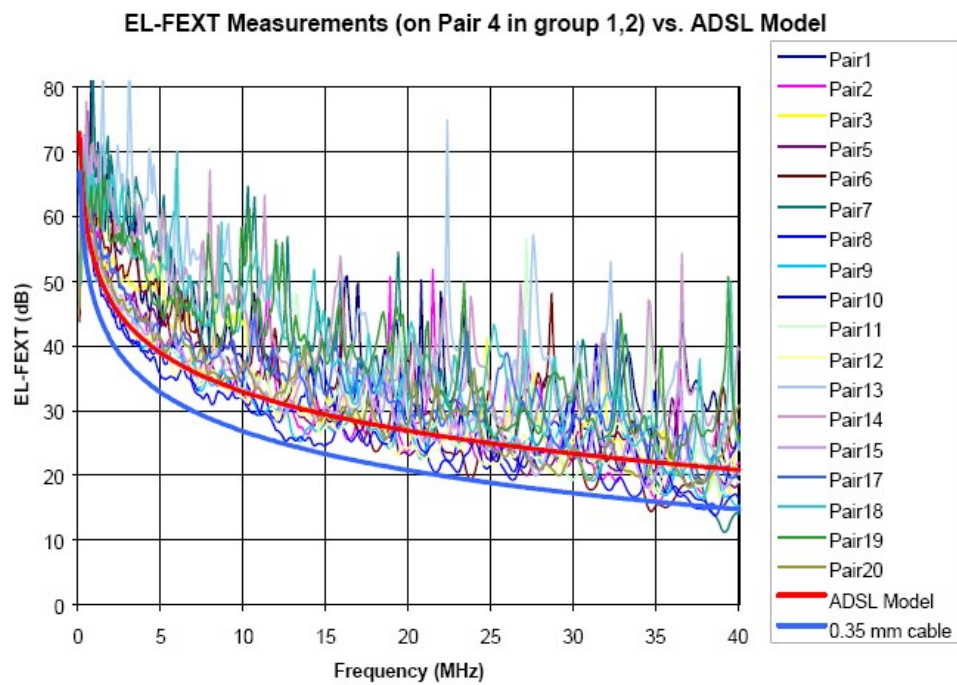


Figure 4 - Pair-to-pair EL-FEXT measurements in groups 1,2

Figure 7

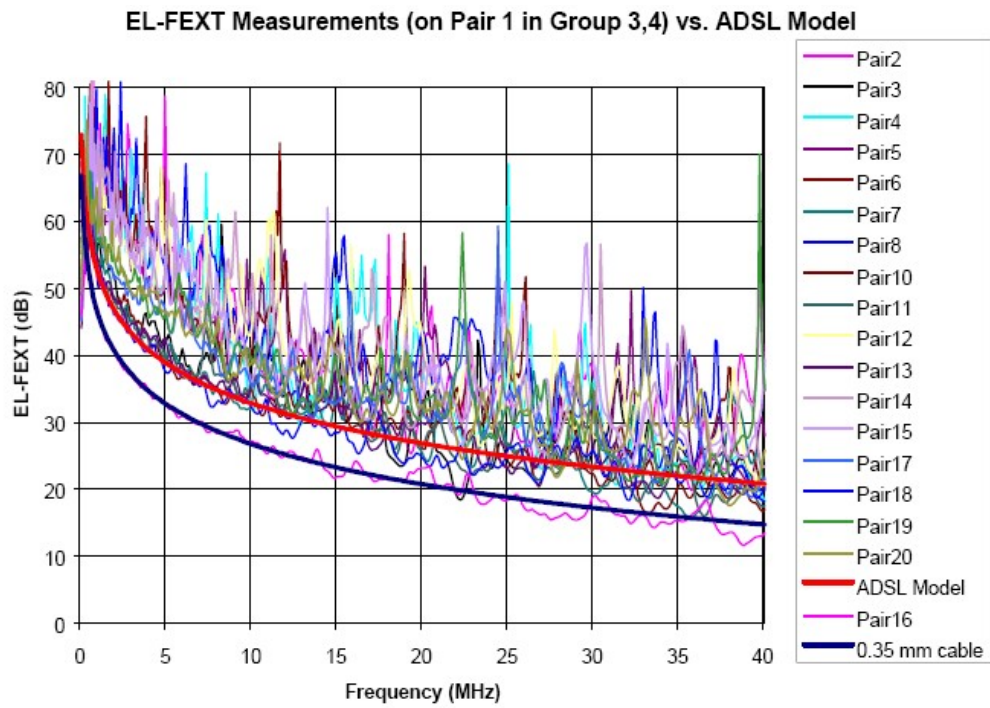


Figure 5 - Pair-to-pair EL-FEXT measurements in groups 3, 4

Figure 8

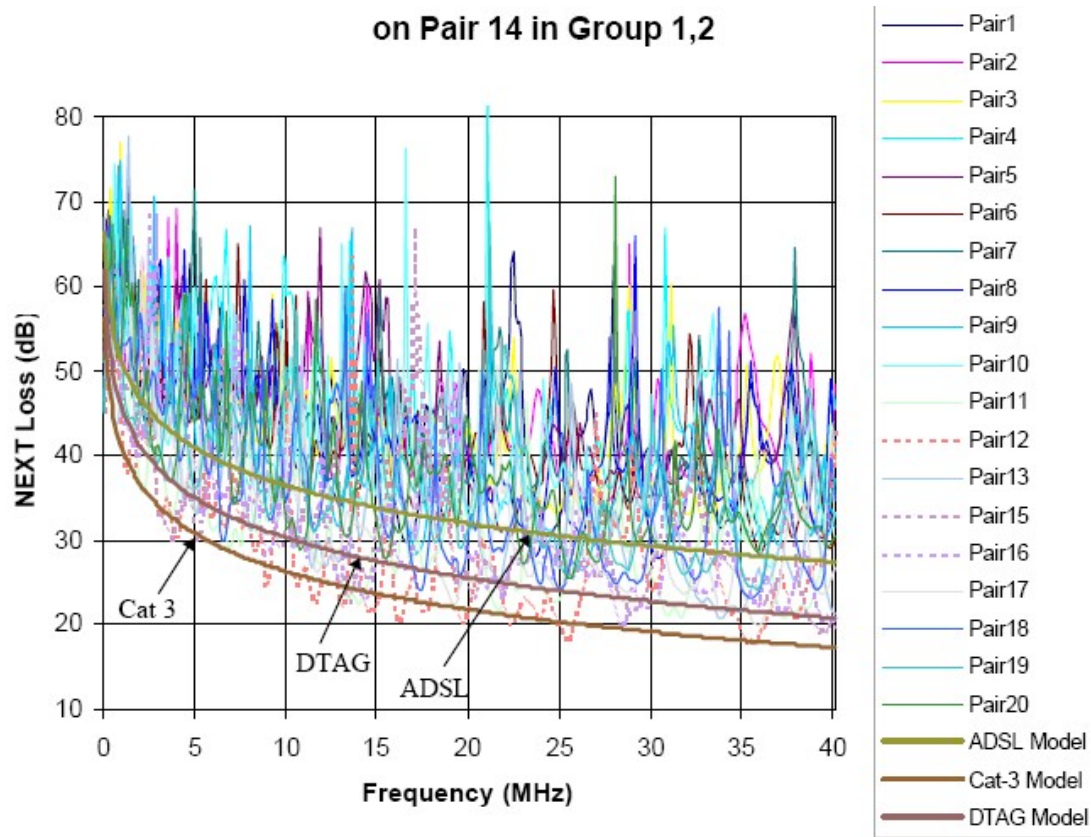


Figure 6 - Pair-to-pair NEXT characteristics for groups 1,2

Figure 9