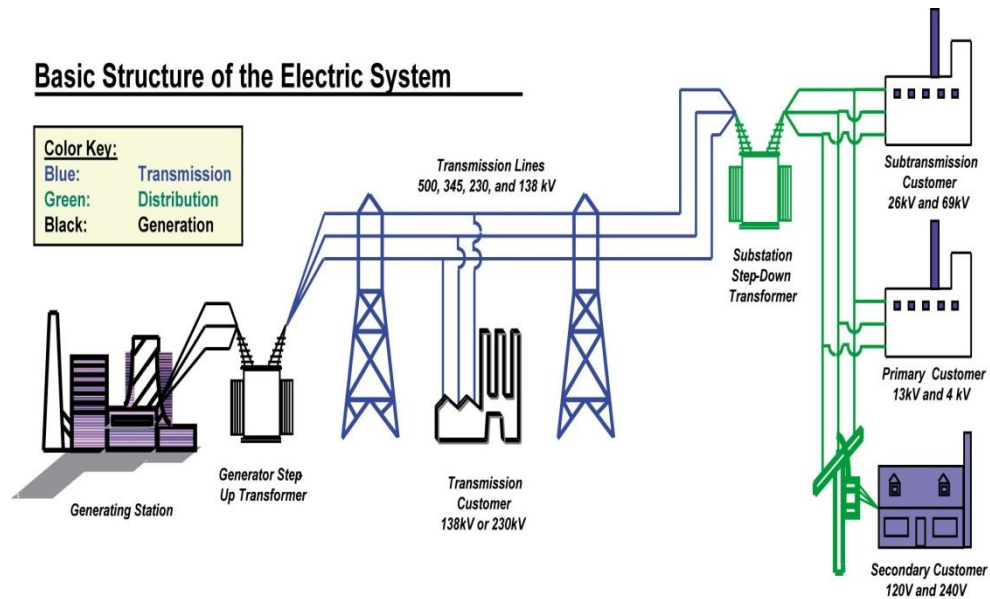


## REFERENCES

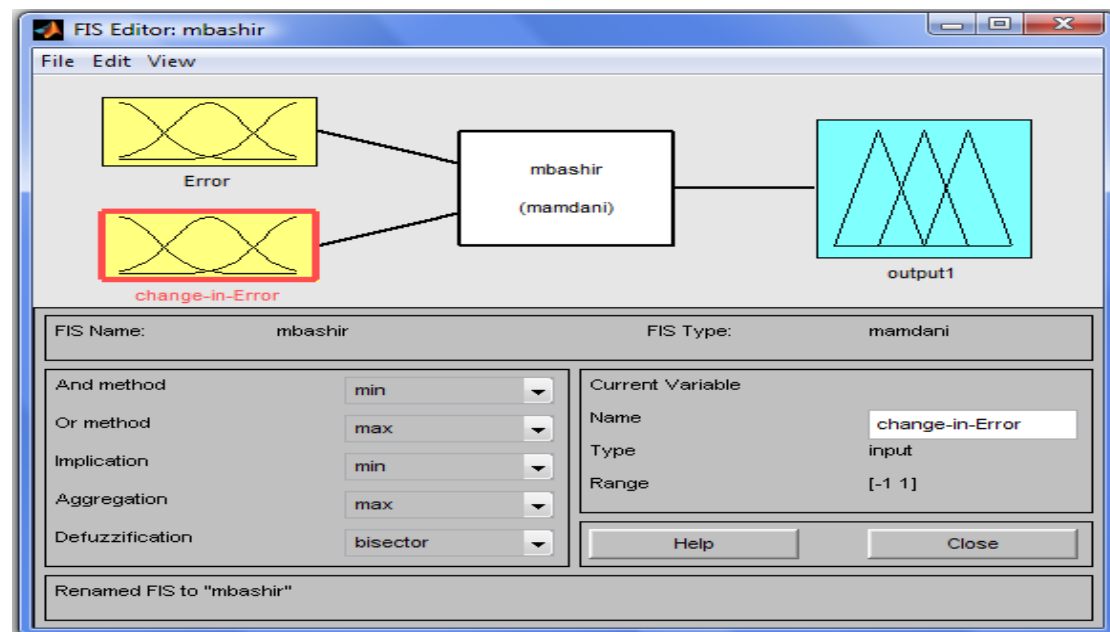
- [1] Hadi Saadat, "Power System Analysis", McGraw-Hill, U.S.A Second Edition, 2004.
- [2] Lostly H. H. W and Lewis D. L, "Homo polar Machines", Philosophical Transactions for the Royal society of London, 1973.
- [3] Langdon Crane, "Magneto-hydrology-dynamic (MHD) Power Generators", Library of congressional Research service, 1981.
- [4] King Myke, "Process control: A practical Approach". Wiley, 2010 .
- [5] Graham Ron, "FAQ on PID controller tuning ", Mike Mc Hugh ,2005.
- [6] [www.en.wikipedia.PIDController](http://www.en.wikipedia.org/wiki/PID_Controller). Date of accessing 2.8.2013.
- [7] Gerla G. , Fuzzy logic programming and fuzzy control , studio logica 2005.
- [8] Bastin A., "Identifying fuzzy models utilizing genetic programming, fuzzy sets and systems", 2000.
- [9] Hajek P., Metamathematics of Fuzzy logic, Kluwer Academic publishers, Dordrecht, The Netherlands, 1998.
- [10] Jan Jantzen, " Foundation of fuzzy control", John wiley and sons, 2007.
- [11] P. Kundur, "Power System Stability and Control", McGraw-Hill, U.S.A , 1994.
- [12] Sunil S.Rao, "Switchgear Protection and Power Systems", KHANNA Publishers Delhi, Eleventh Edition, 1999.
- [13] Robert Herschel Miller, James H. Malinowski, "Power system operation", Mc Graw-Hill professional, 1994.
- [14] Wiliam D. Stevenson, "Elements of Power system Analysis", Third Edition, Mc Graw-Hill, New York,1975.

# APPENDIX

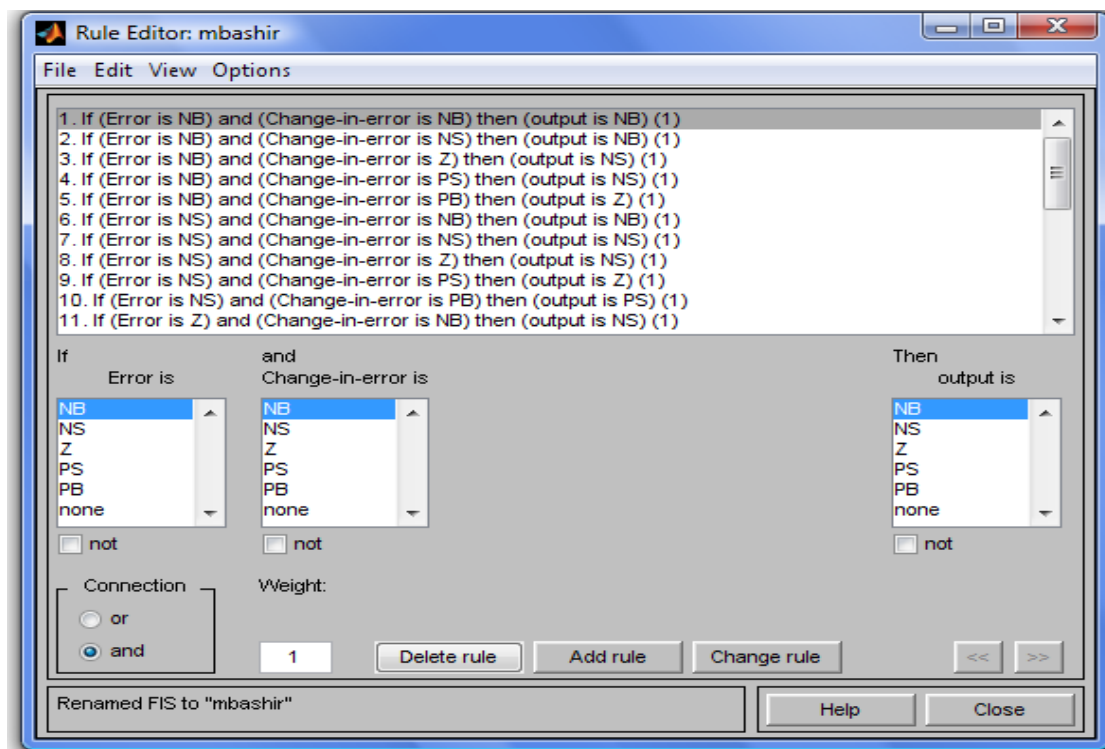
## • Basic Power System



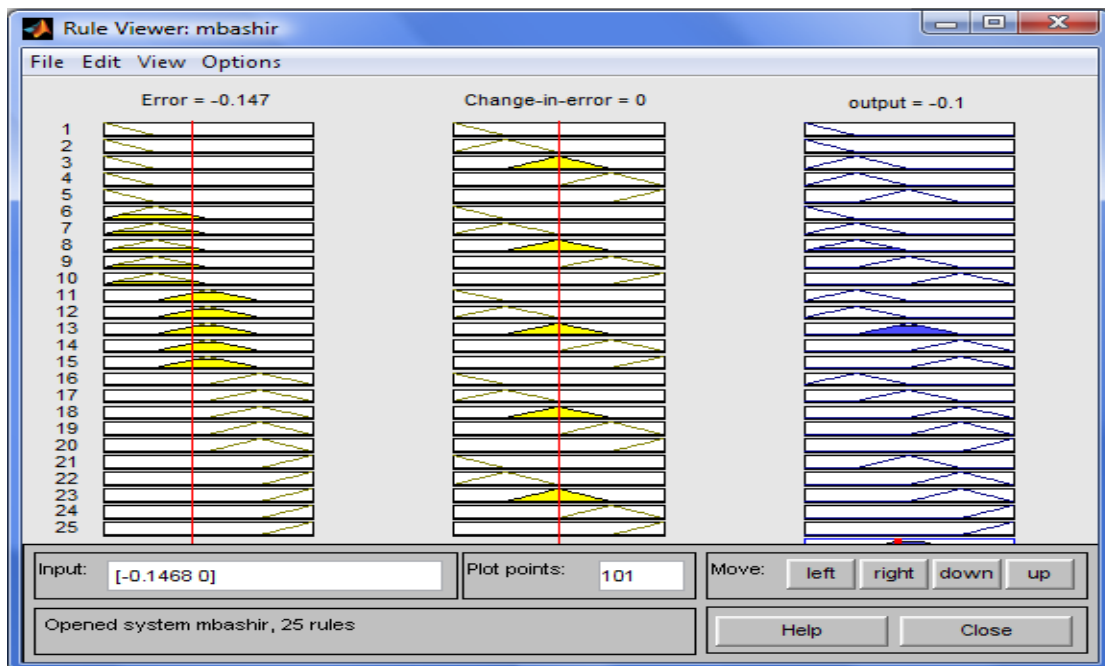
## • Fuzzy Inference Editor



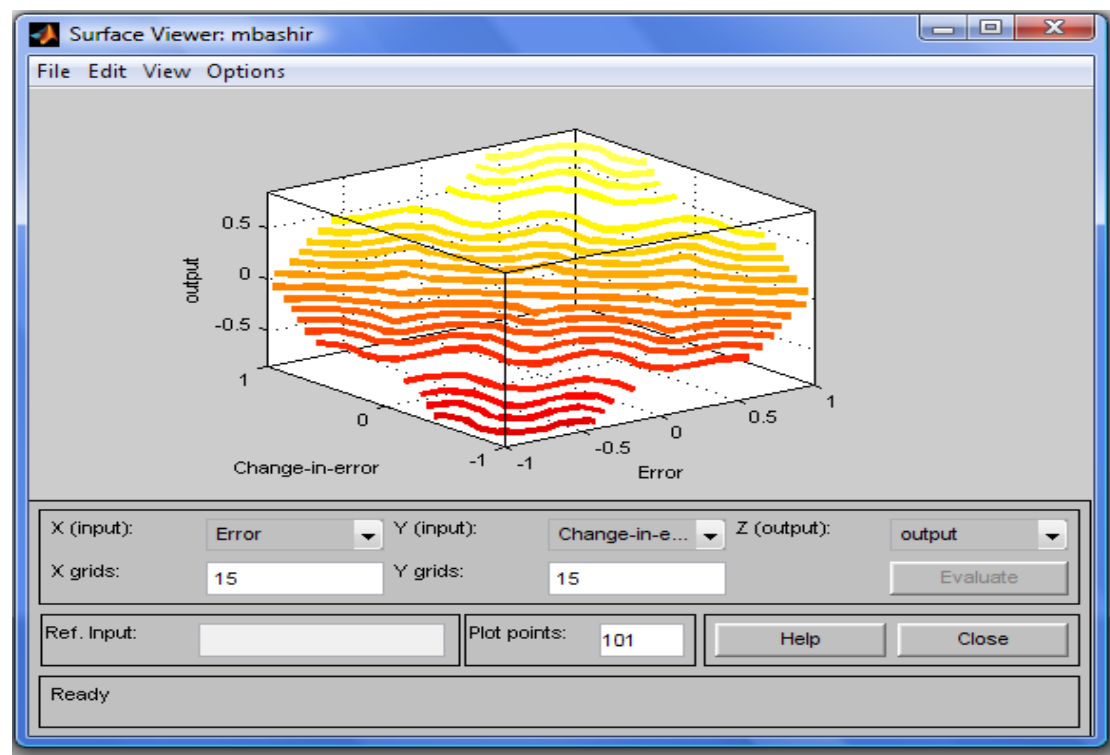
## • Rule Base Editor



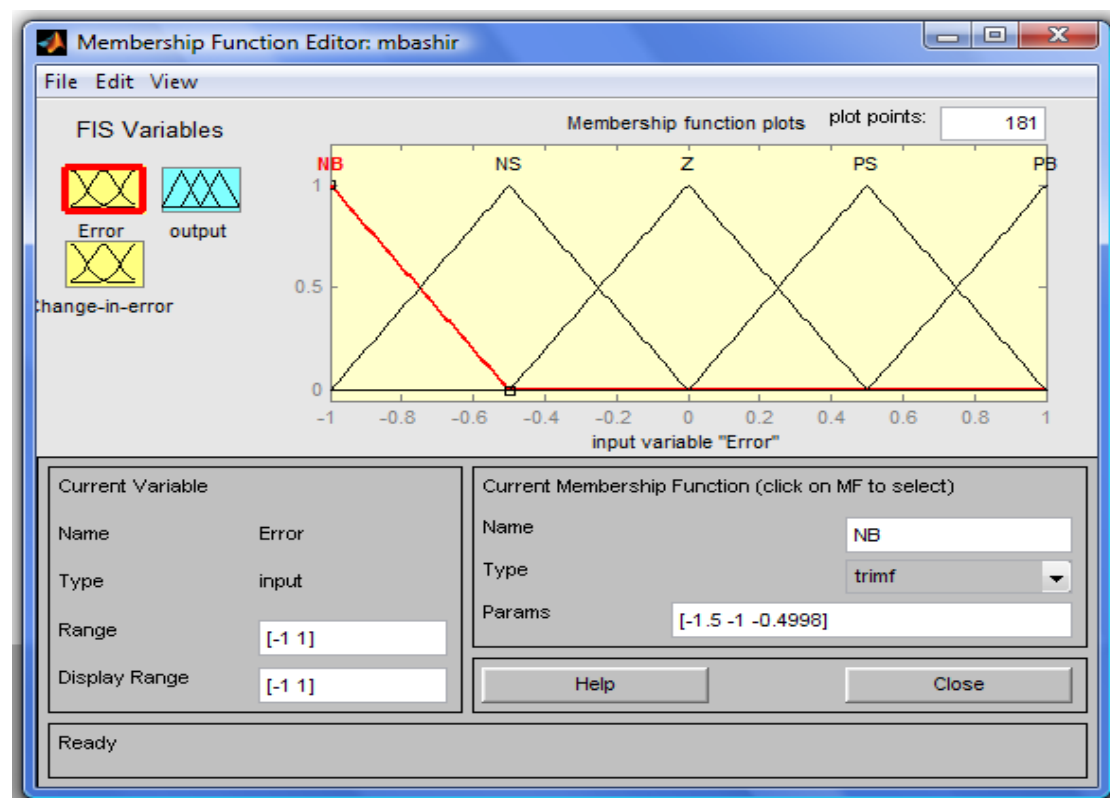
## • Rule Viewer



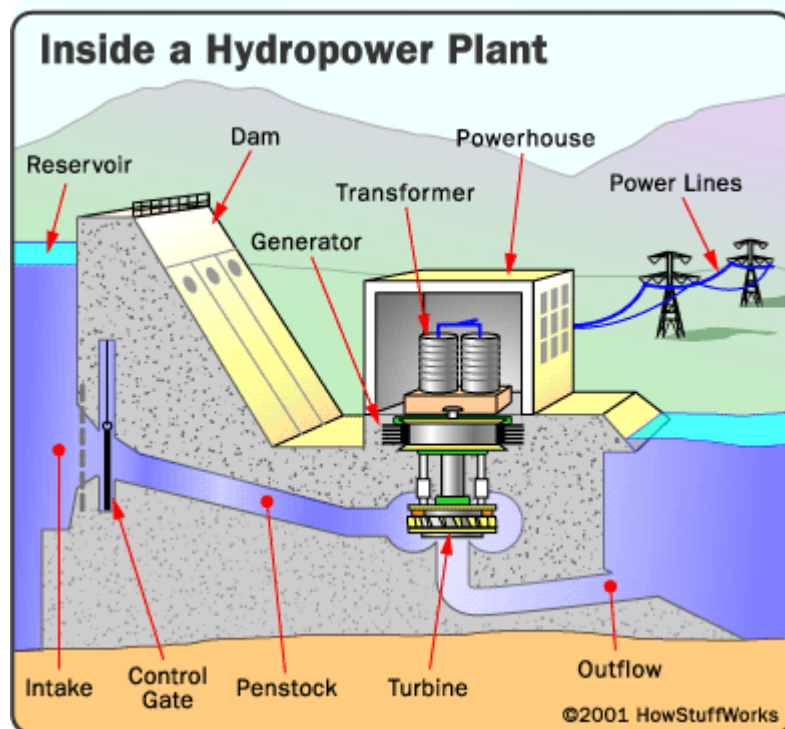
- **Surface Viewer**



- **Member Function Editor**



- Power Plant Example (Hydro)



- Power Plant Example (Steam)

