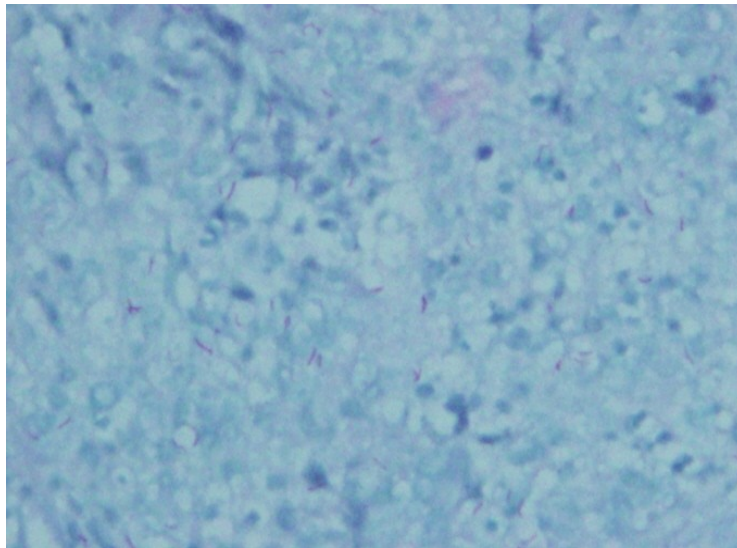
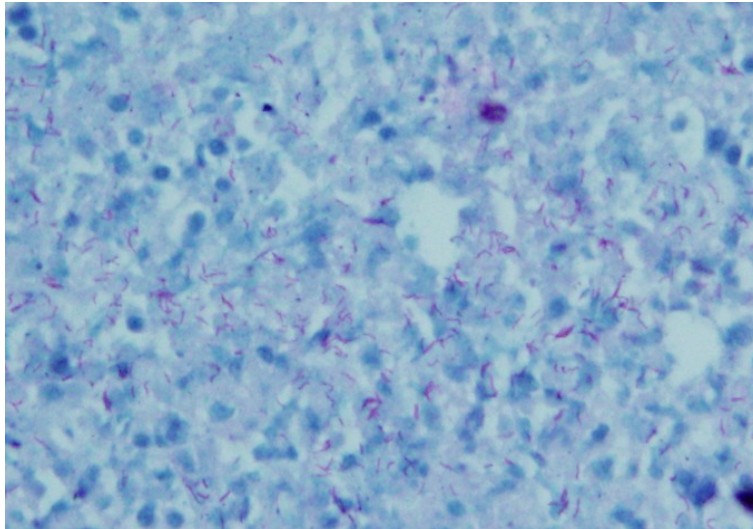


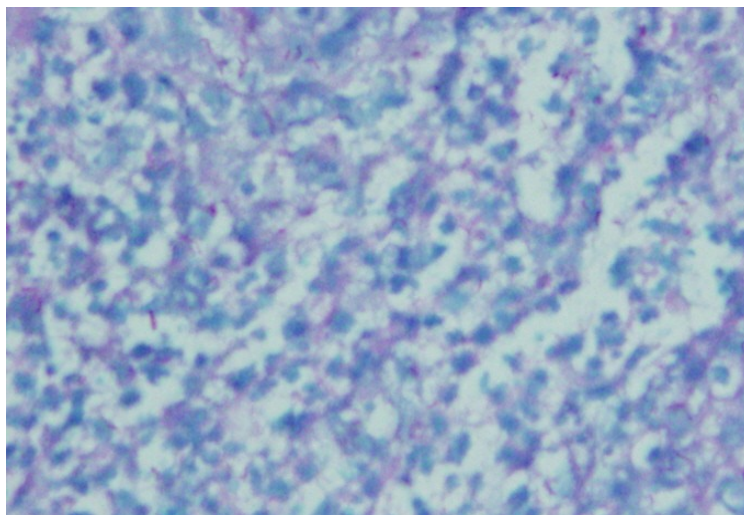
:(Figure (1
.Traditional ZN stain using 0.3% basic fuchsin



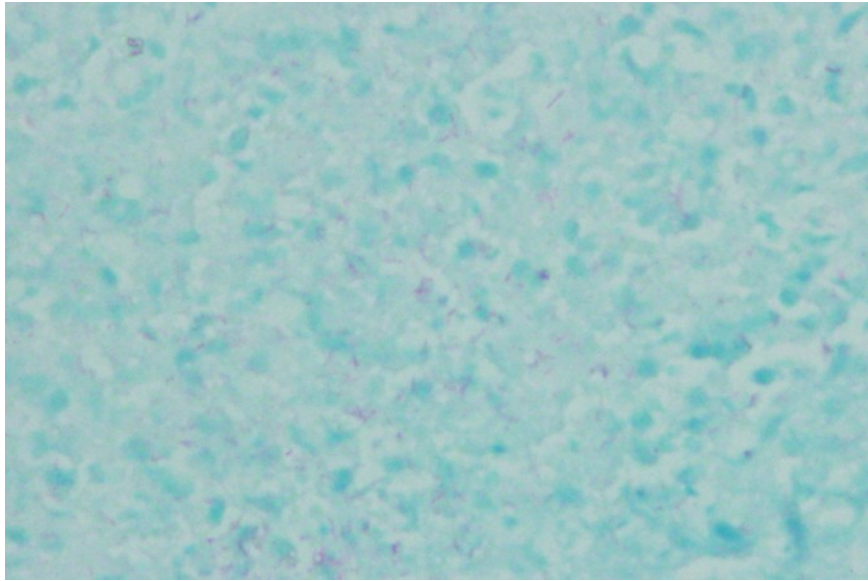
:(Figure (2
.Traditional ZN stain using 1% basic fuchsin



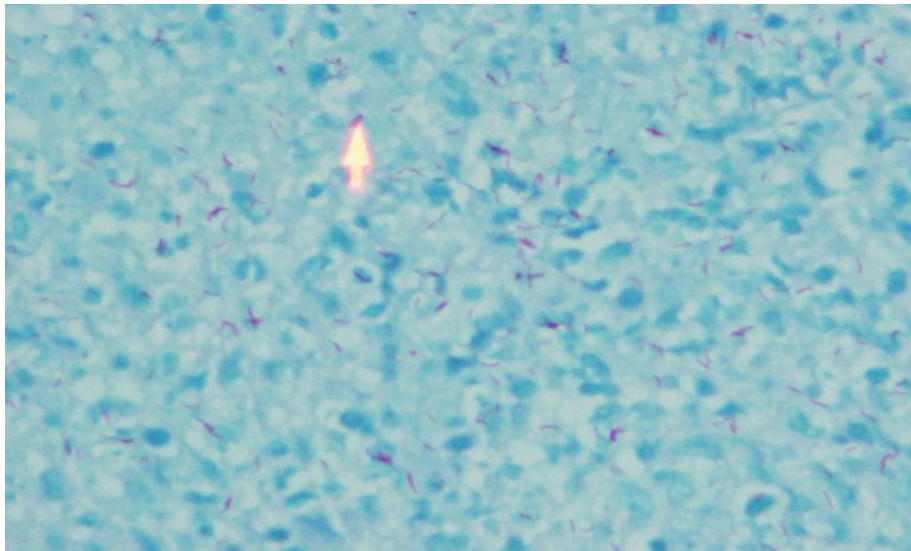
:(Figure (3
.Traditional ZN stain using 1% basic fuchsin



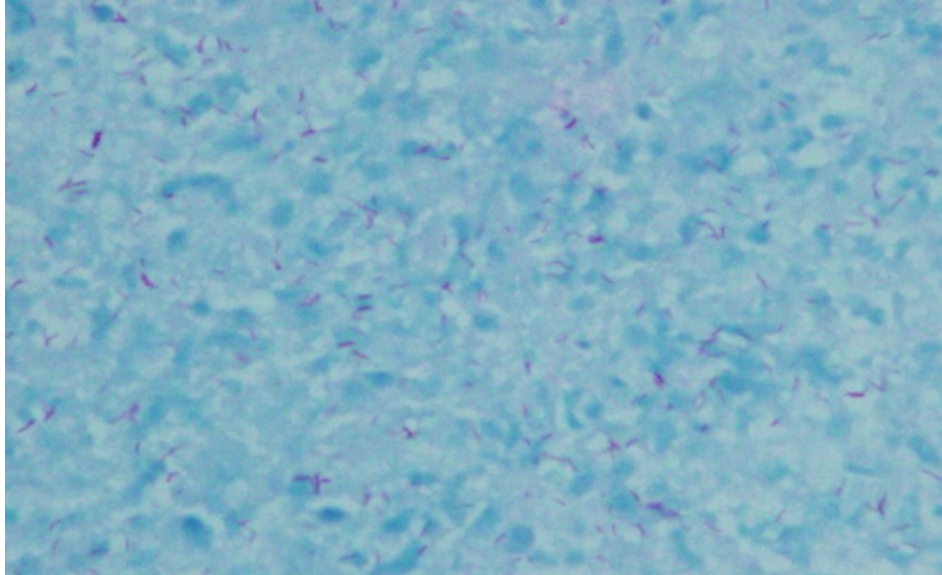
:(Figure (4
](Modified basic fuchsin (Fairy



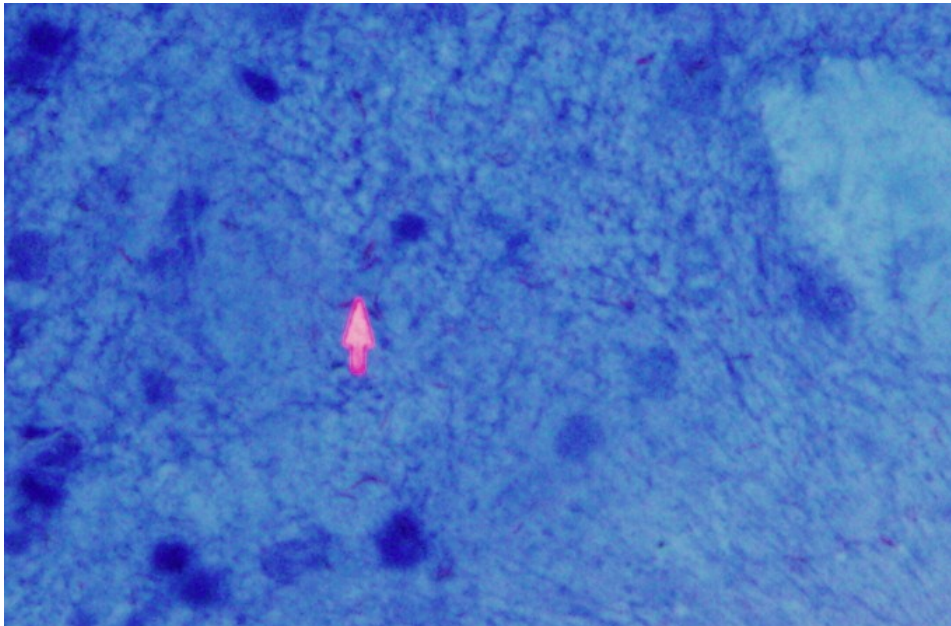
: (Figure 5
(Modified basic fuchsin (Alfa



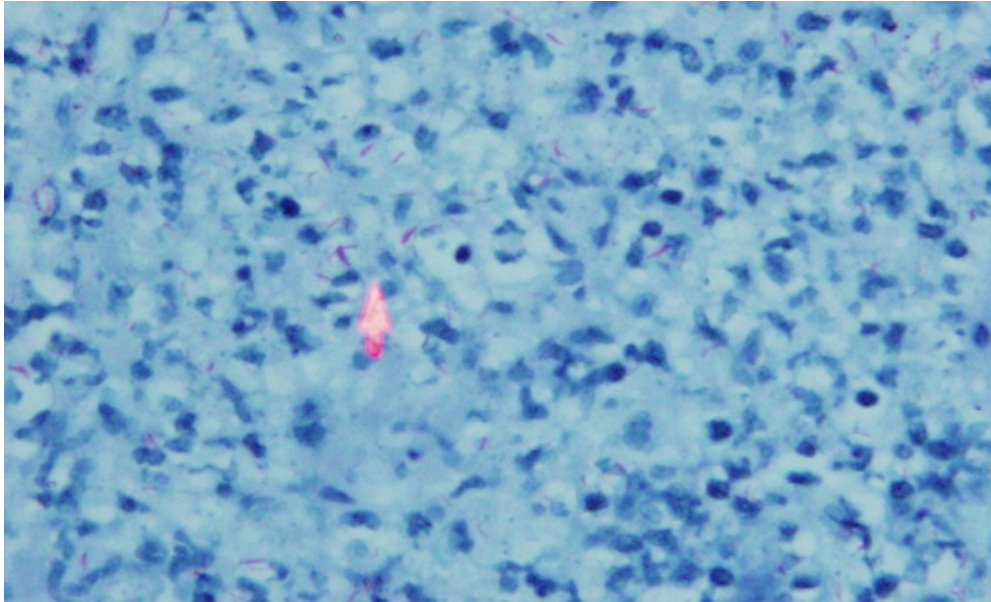
: (Figure 6
(Modified basic fuchsin (Clorax



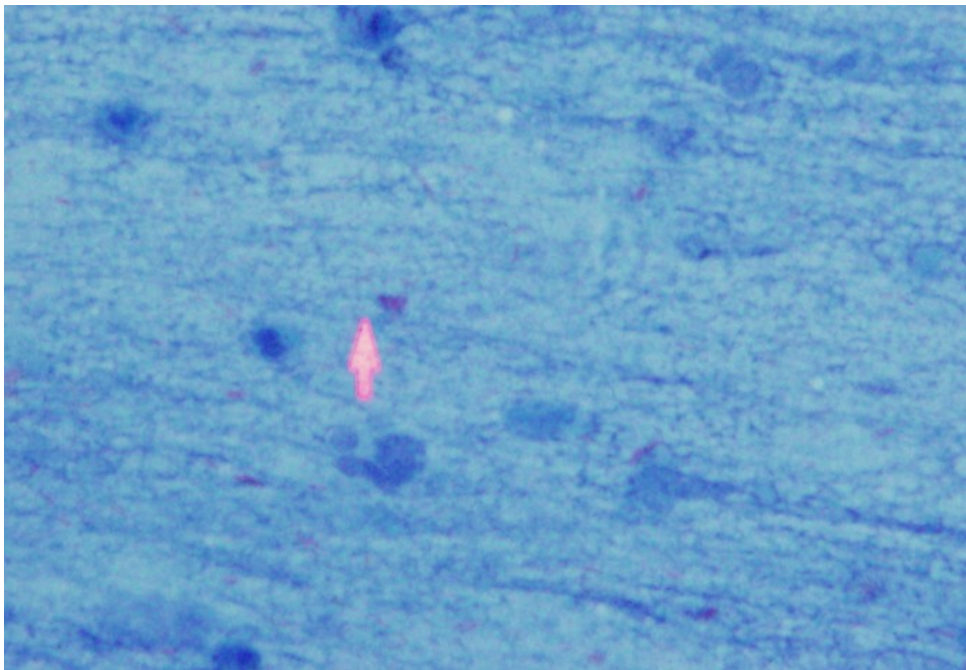
:(Figure (7
.Modified basic fuchsin (Clorax).Notice the clear background



:(Figure (8
(Positive smear sputum stained by modified basic fuchsin(Fairy



: (Figure 9
.Traditional extended time in oven



: (Figure 10
(Positive smear sputum stained by modified basic fuchsin(Clорax

