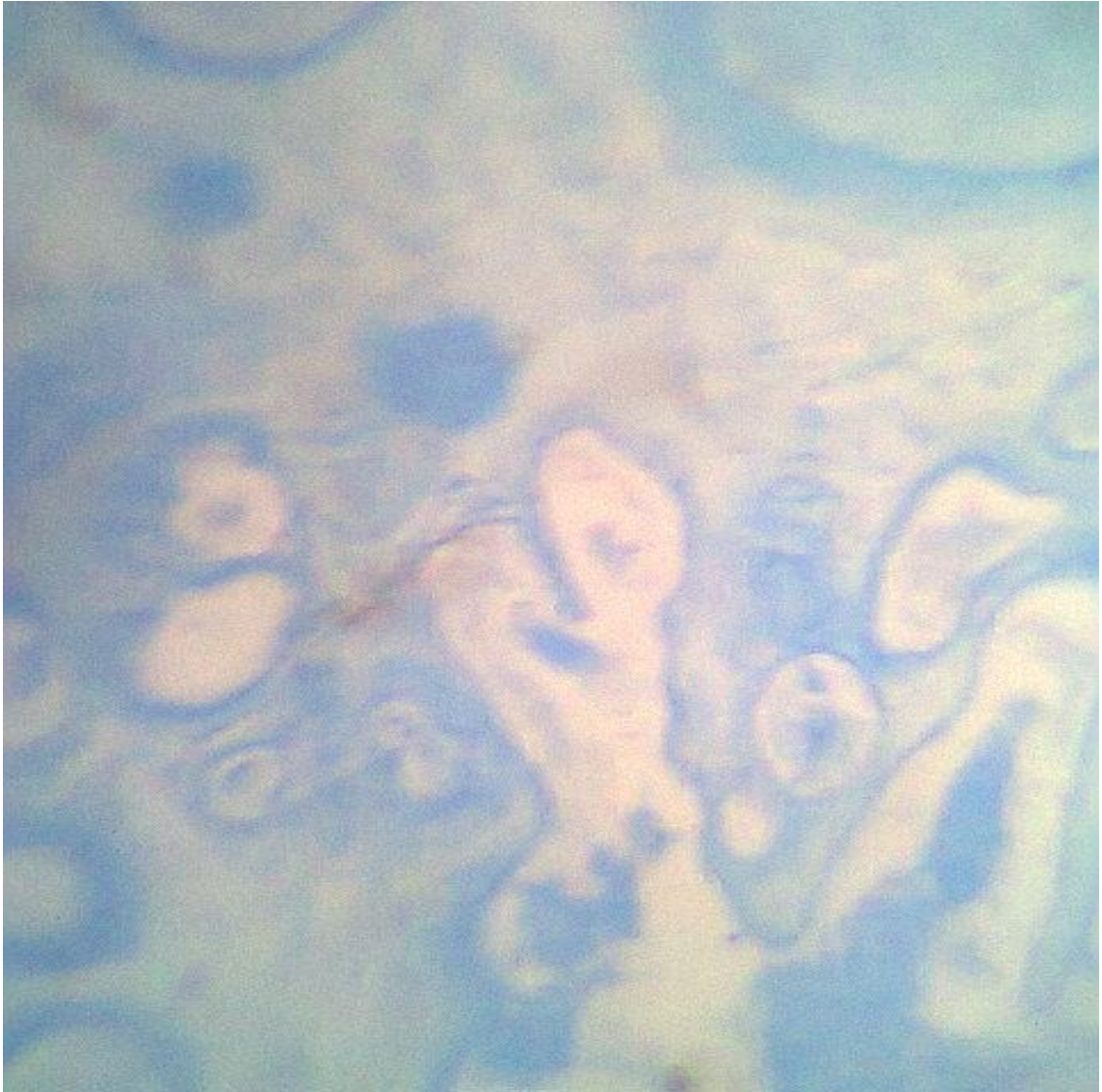


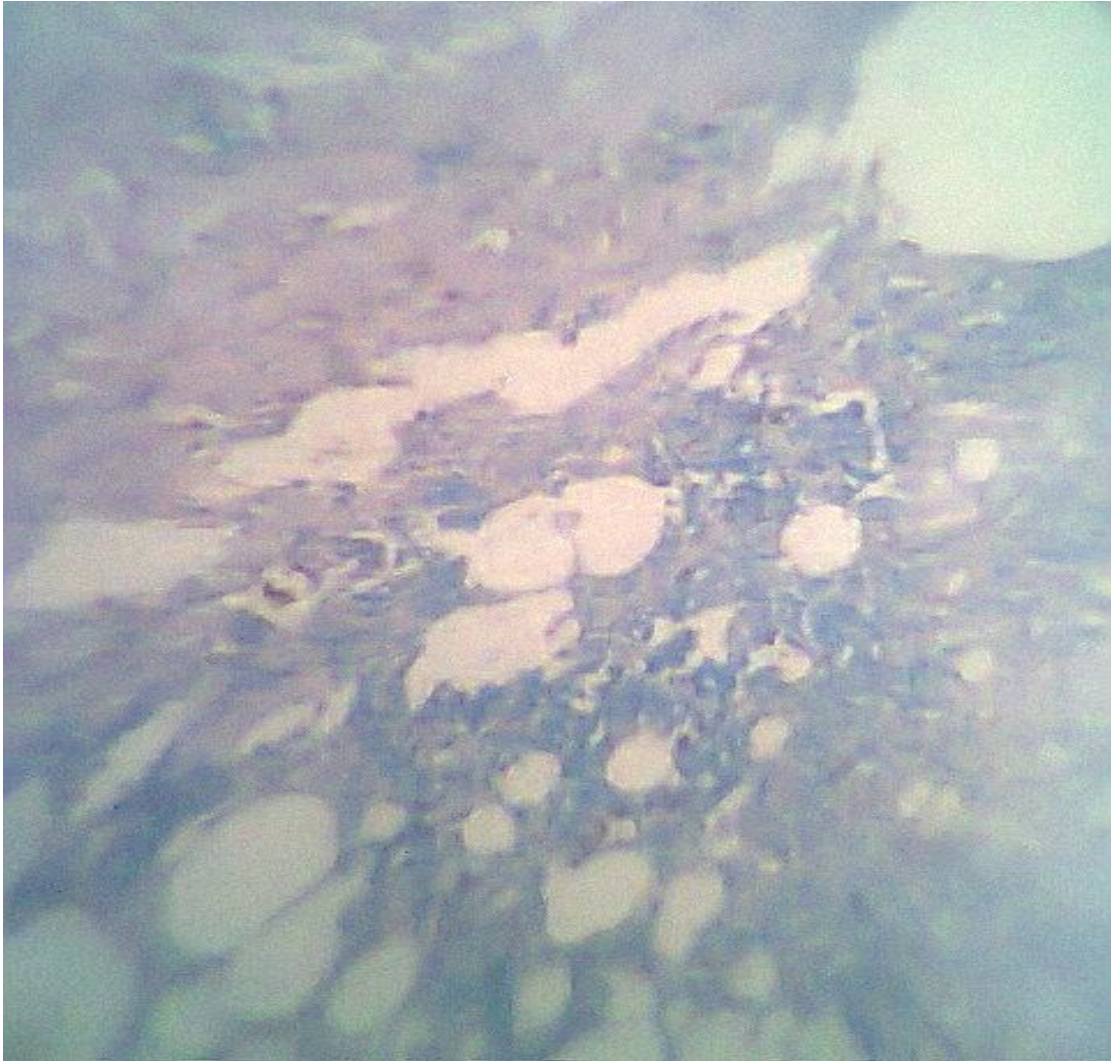
**Photo(1) Breast section diagnosed as medullary carcinoma showing low intensity of neutral mucin using PAS and x40**



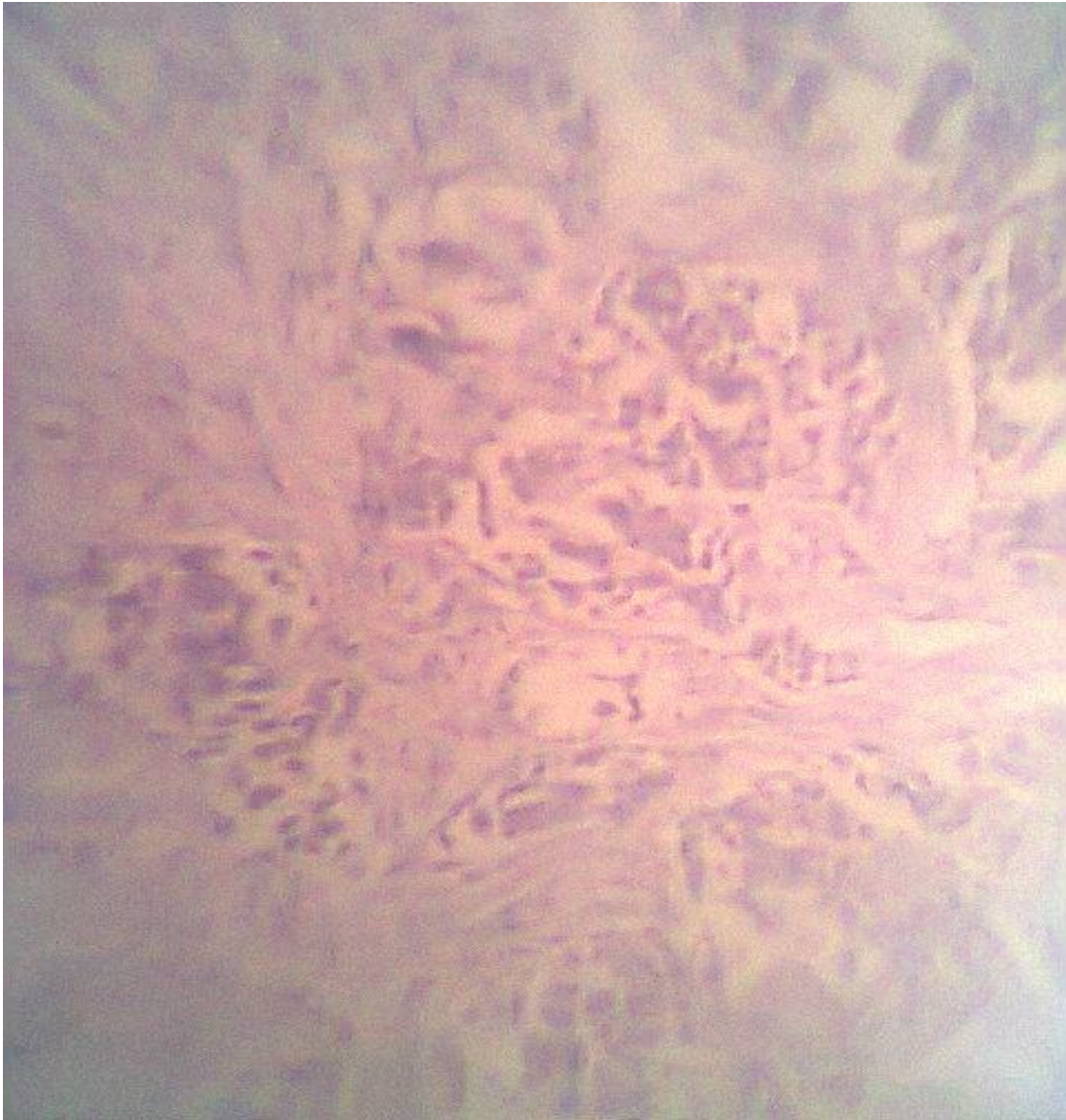
**Photo (2). Describing the intensive reaction of acid mucin using alcian blue pH 2.5 in section diagnosed as invasive ductal carcinoma.**



**Photo (3). Show moderate reaction for sulphated acid mucin using alcian blue pH 1.0 in breast tissue diagnosed as non invasive ductal carcinoma, by light microscope, x40**



**Photo (4). Show low reaction for carboxylated acid mucin using alcian blue pH 3.2 in breast tissue diagnosed as invasive lobular carcinoma, by light microscope, x40**



**Photo (4). Show no reaction for acid mucin using alcian blue pH 2.5 in breast tissue diagnosed as invasive lobular carcinoma, by light microscope, x40**