

5.5 Appendix:

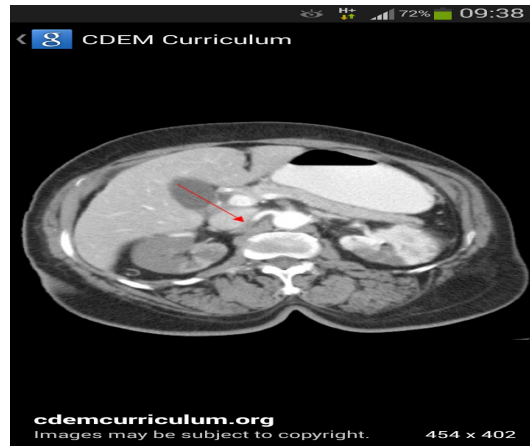
Appendix 1

Data collecting sheet

[illegible]

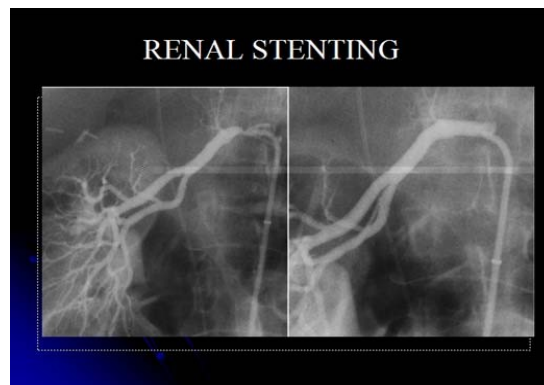
Appendix 2 (Radiographs)

(A)



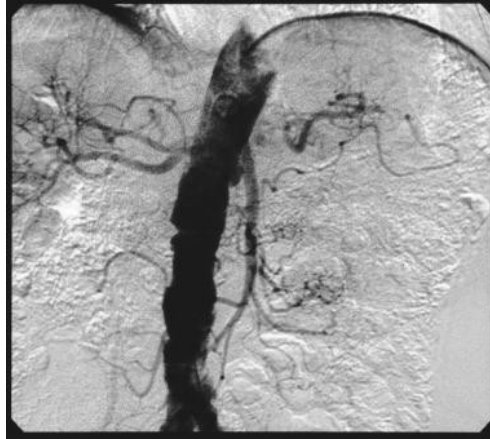
RTrenal artery stenosis in 58 old with hypertension. Axial CTA in arterial phase show tight stenosis in RT renal artery (arrow) with prestenosis dilatation.

(B)



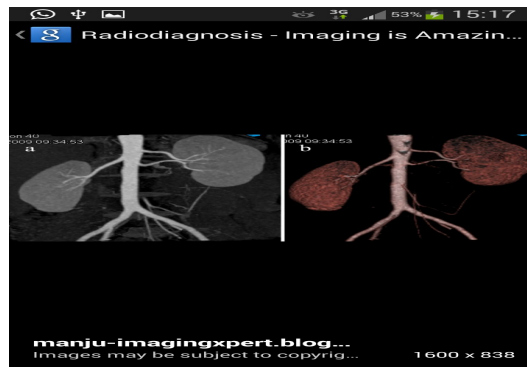
Preangioplasty angiogram show RTrenal artery stenosis

(C)



renal artery stenosis /RVHT. Digital subtraction aortogram in 80 y old show complete occlusion of the LT renal artery .

(D)



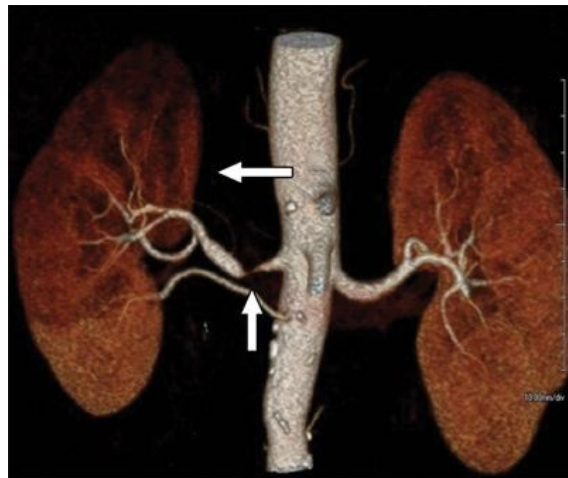
multiple renal arteries in 50 -year-old man potential renal donor as well as in coronal 3D image .

(E)



Coronal VR3D CTA for renal donor showing normal renal artery

(F)



3D CTA renal angio showing RT renal artery aneurysm

(G)



CTA Lt renal artery aneurysm

**Appendix 3
(Photography)**

(A)



Position of the patient for CTA renal Angio and preparation of contrast media in automatic injector machine

(B)



Automatic Injector Device