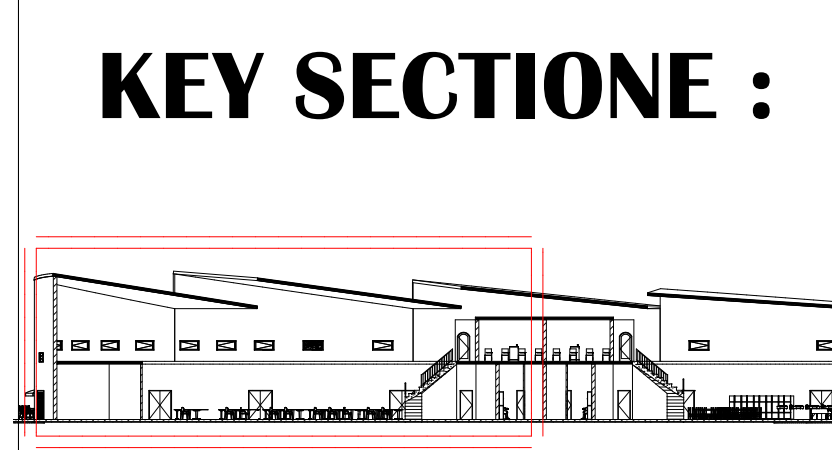
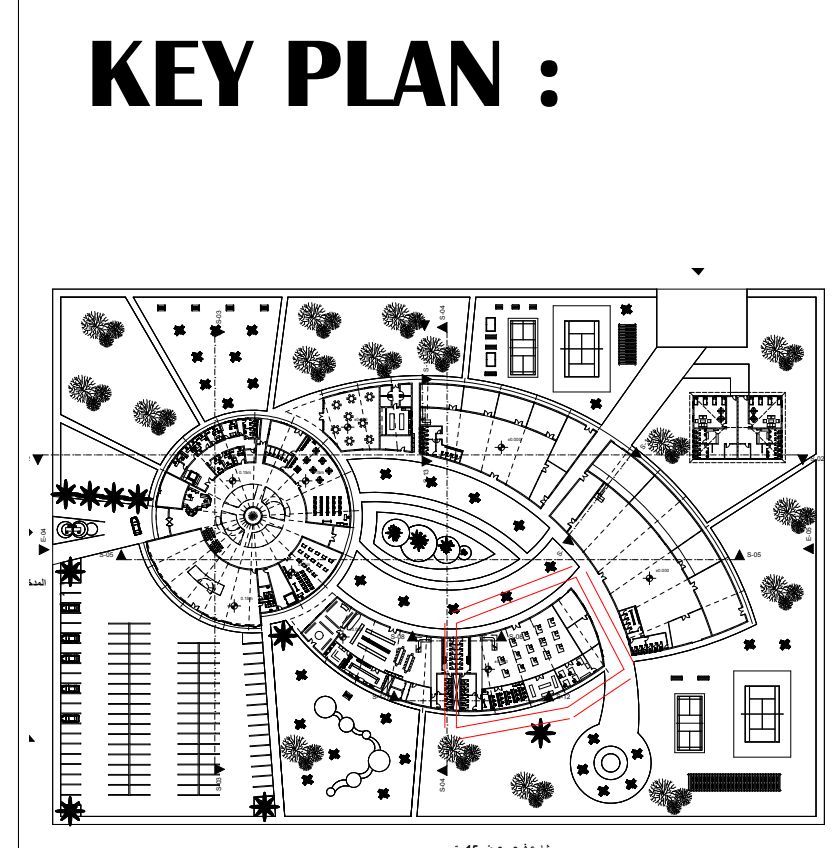


REMARK :

- All Dimension are on Meter
- All Plain Concrete (1:3:6) mix
- All R.F. Concrete (1:2:4) mix
- All Mortars CLS mix(1:8)
- Projection and Smok Machain Panasonic Type Made In JAPAN
- Spot Lights Strong is 60 watt
- False Ceiling Dimension is 50*50*1.5 from Gypsumboard
- Chair Cloth 70mm thick and the Colour is Maroon

CEILING	
NO.	DESCRIPTION
C1	FIBER FALSE CEILING TILES 60" * 60" * 1.5 CM
C2	ALUMINUM FALSE CEILING TILES 60" * 60" * 1.5 CM
C3	ACRYLIC EMULSION PAINT (TERPLAST)
C4	ACOUSTICAL TILES FOR CEILING
FLOOR	
NO.	DESCRIPTION
F1	80*80 CM WHITE & BROWN MARBLE TILES OVER SCREED 1/8 OVER D.P.C. 2 LAYERS OVER P.C. 10CM OVER HARD CORE
F2	80*80 CM WHITE PORCELAIN TILES OVER SCREED 1/8 OVER D.P.C. 2 LAYERS OVER P.C. 10CM OVER HARD CORE
F3	30*30 CM LIGHT BLUE CERAMIC TILES OVER SCREED 1/8 OVER D.P.C. 2 LAYERS OVER P.C. 10CM OVER HARD CORE
F4	DECORATIVE STONE FREE OVER SCREED 1/8 OVER SAND FILLING OVER HARD CORE
F5	ACOUSTICAL (ISOLATION) BLANKET OVER R.C. FARE FACED 10CM OVER D.P.C. OVER HARD CORE
SKIRTING	
NO.	DESCRIPTION
S1	MARBLE 10" * 10" * 2 CM
S2	GRANITE 10" * 20" * 2 CM
S3	PORCELAIN 10" * 10" CM



SUDAN UNIVERSITY OF SCIENCE AND TECHNOLOGY
FACULTY OF ARCHITECTURE
BACHELOR FIFTH ARCHITECTURE CENTER FOR HUMAN DEVELOPMENT
TECHNICAL SOLUTIONS
SUPERVISION : DR. AWAD SAA'D RIHAM MOHAMED ELNASRI

PART PLAN AND SECTION ON SEWING WORKSHOP SCALE 1:00