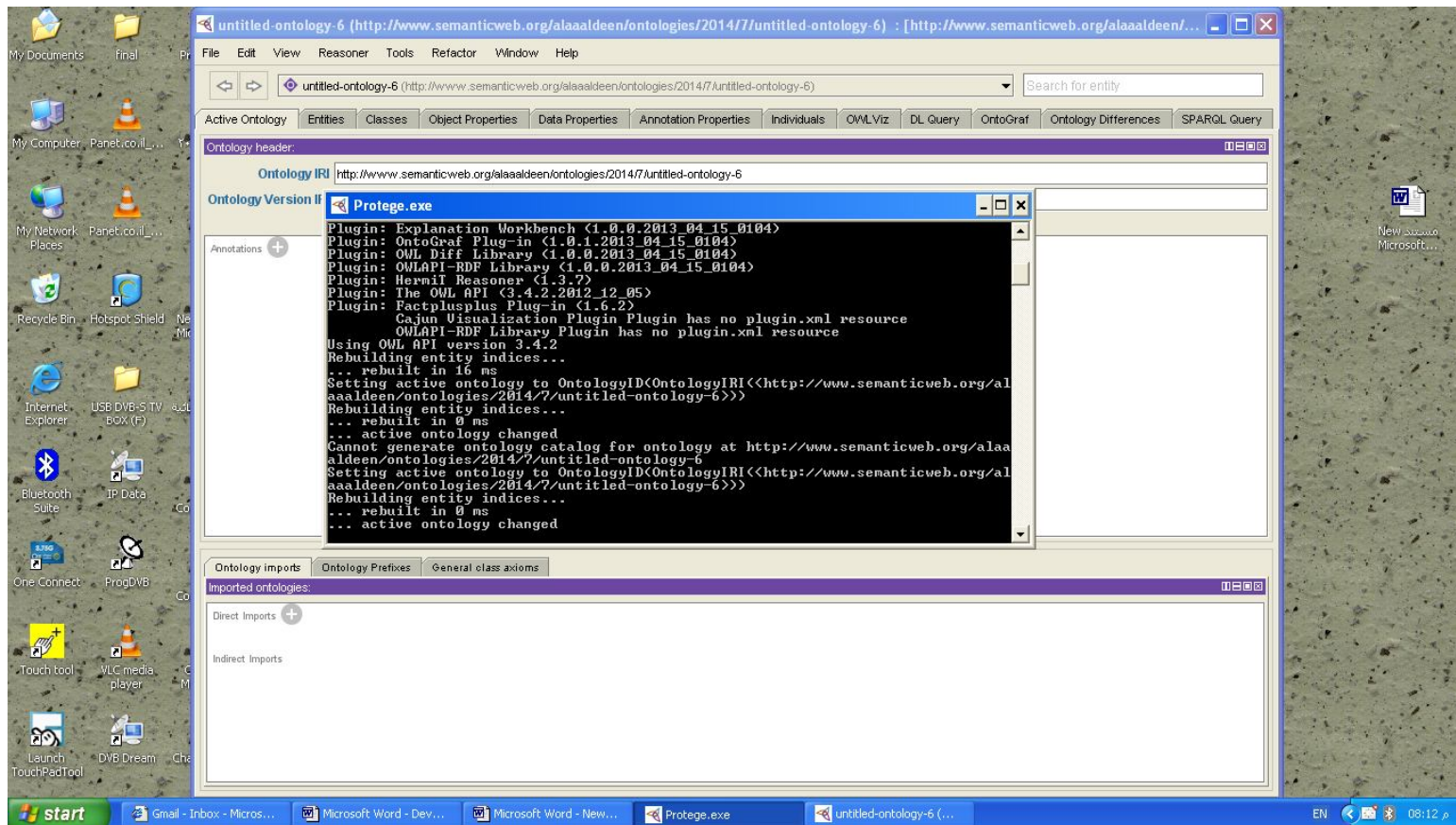
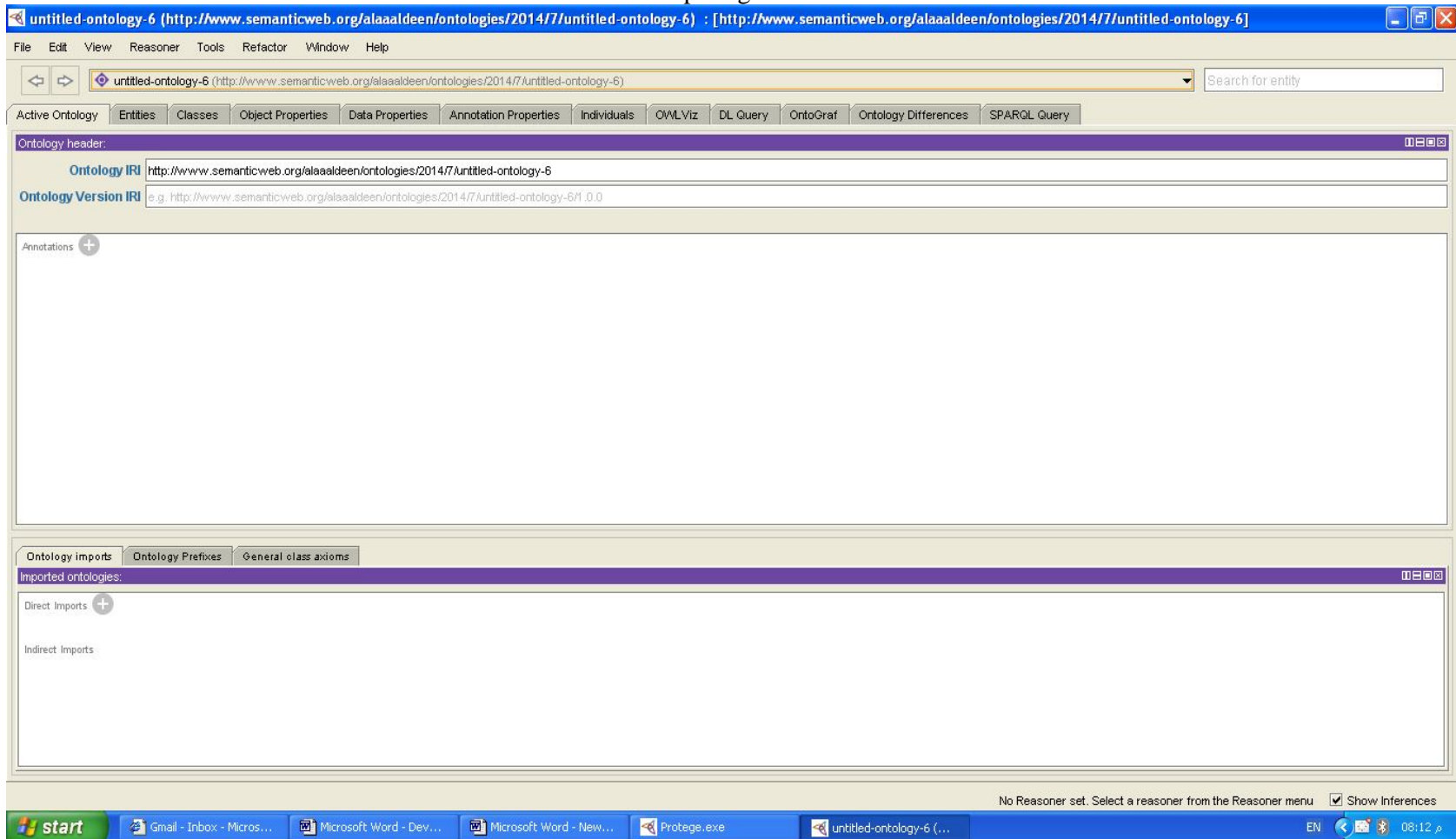


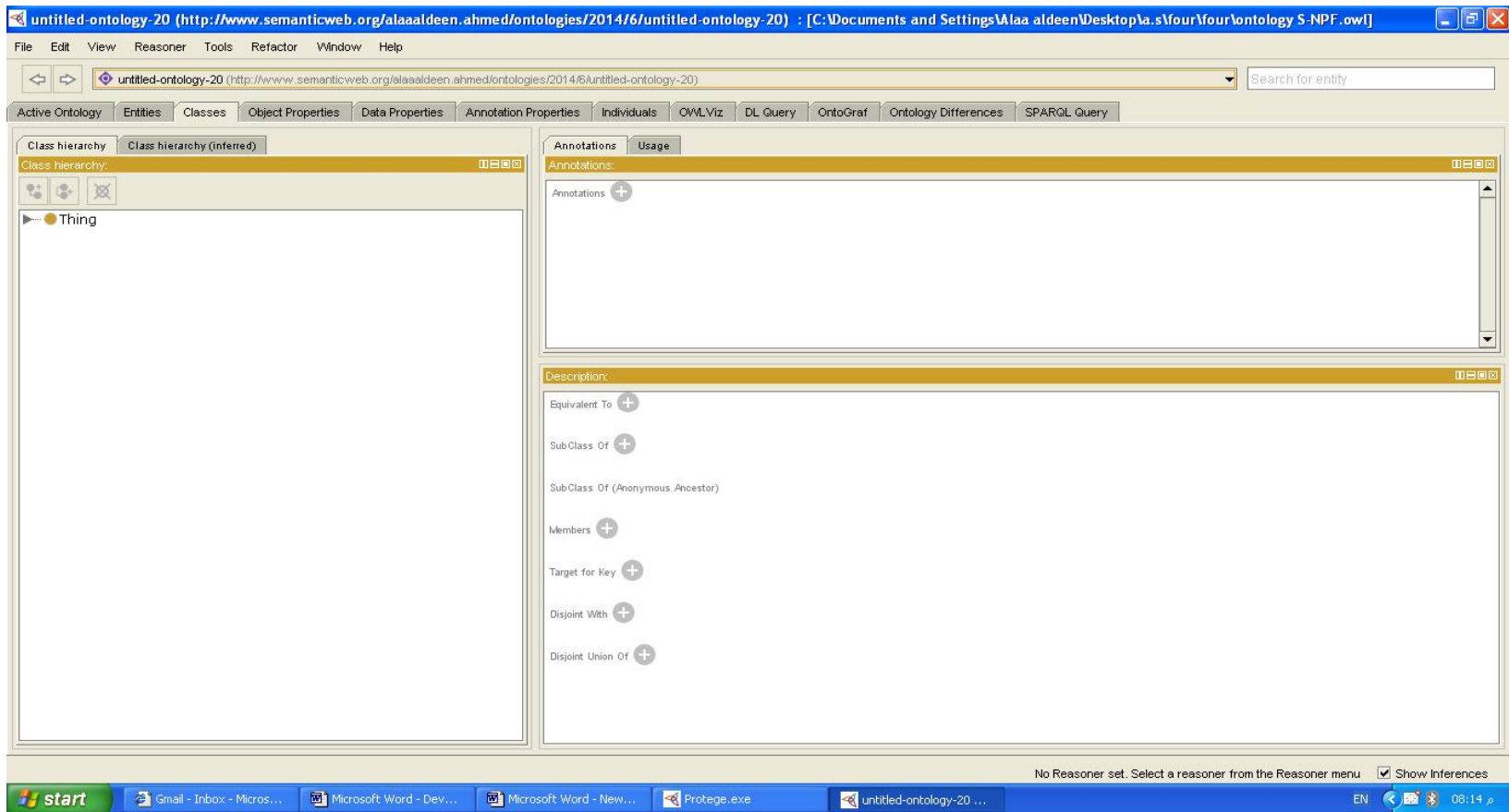
Appendages



Start protégé/editor



Main navigator of protégé



The thing ontology of (S-NPF)

The screenshot displays the Protege ontology editor interface. The main window shows the class hierarchy for the ontology 'ontology_S-NPF'. The hierarchy is as follows:

- Thing
 - ontology_S-NPF
 - Engineering_Management
 - General_manager
 - Internal_Audit
 - Legal_department
 - Public_Relations

The right-hand side of the interface contains two panels: 'Annotations' and 'Description'. The 'Annotations' panel is currently empty. The 'Description' panel lists various relationships that can be added to the class, such as 'Equivalent To', 'Sub Class Of', 'Sub Class Of (Anonymous Ancestor)', 'Members', 'Target for Key', 'Disjoint With', and 'Disjoint Union Of'. The status bar at the bottom indicates 'No Reasoner set. Select a reasoner from the Reasoner menu' and 'Show Inferences' is checked. The taskbar at the bottom shows the Windows Start button and several open applications: Gmail, Microsoft Word, and Protege.exe.

The main classes of ontology

The screenshot displays the Protege ontology editor interface. The main window shows the class hierarchy of an ontology named 'ontology_S-NPF'. The hierarchy is as follows:

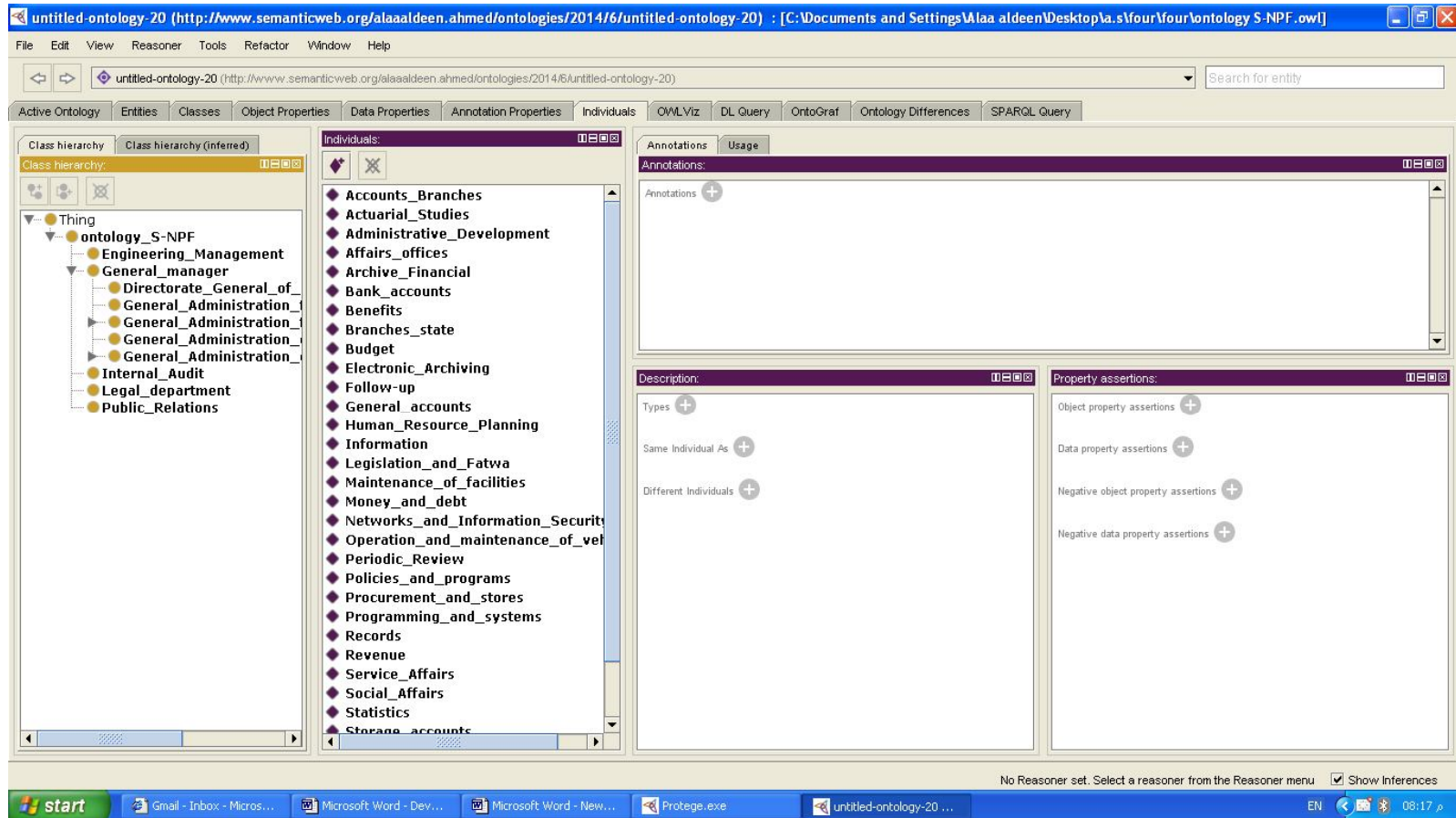
- Thing
 - ontology_S-NPF
 - Engineering_Management
 - General_manager
 - Directorate_General_of_Planning_and_Development
 - General_Administration_for_branches
 - General_Administration_for_Information_Systems
 - General_Administration_of_Affairs_Actuary
 - General_Administration_of_HR
 - Internal_Audit
 - Legal_department
 - Public_Relations

The 'Legal_department' class is selected, and its description panel shows the following properties:

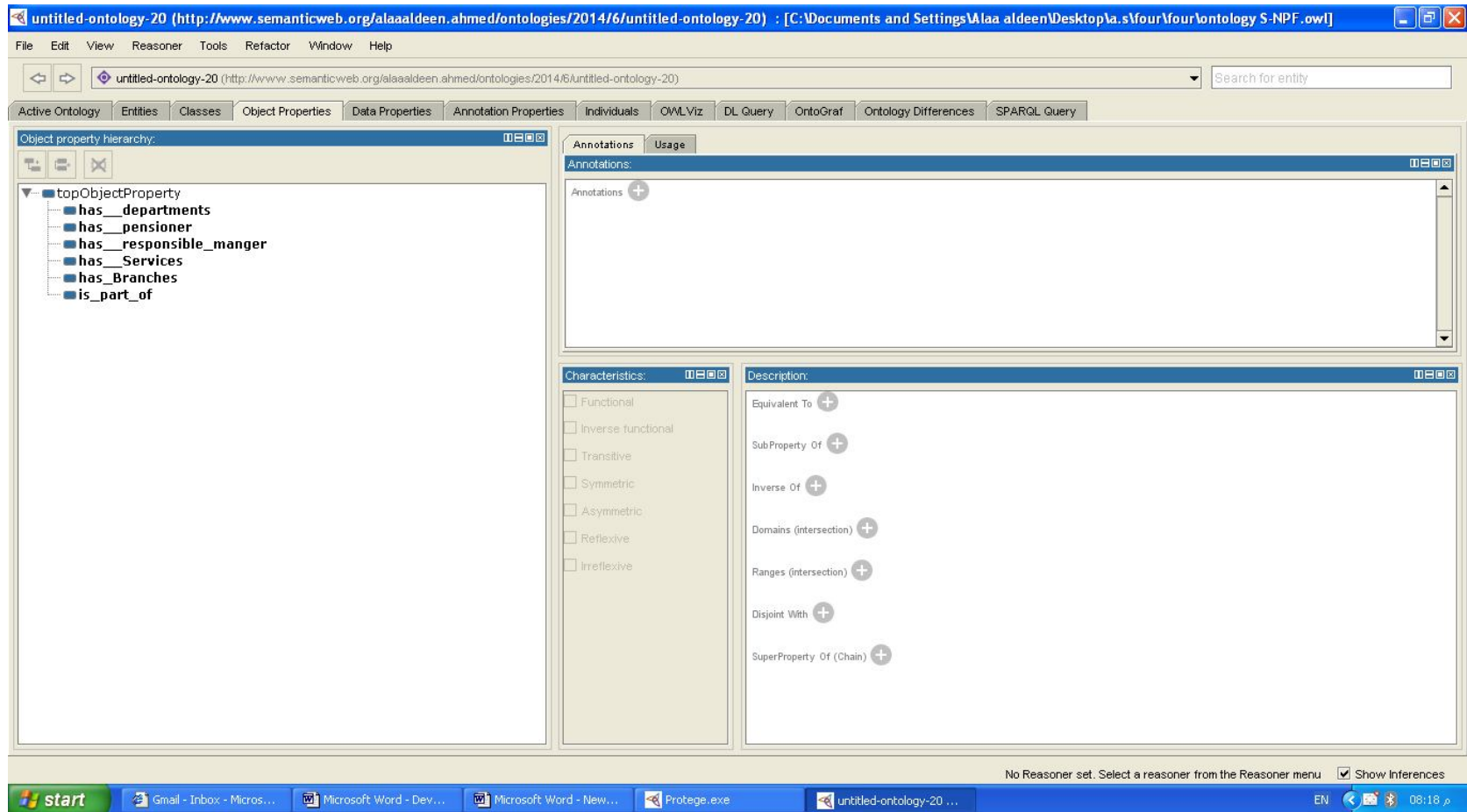
- Equivalent To: http://www.semanticweb.org/alaaaldeen.ahmed/ontologies/2014/6/untitled-ontology-20#Legal_department
- SubClass Of: (none listed)
- SubClass Of (Anonymous Ancestor): (none listed)
- Members: (none listed)
- Target for Key: (none listed)
- Disjoint With: (none listed)
- Disjoint Union Of: (none listed)

The bottom status bar indicates 'No Reasoner set. Select a reasoner from the Reasoner menu' and 'Show Inferences' is checked. The system tray shows the time as 08:16.

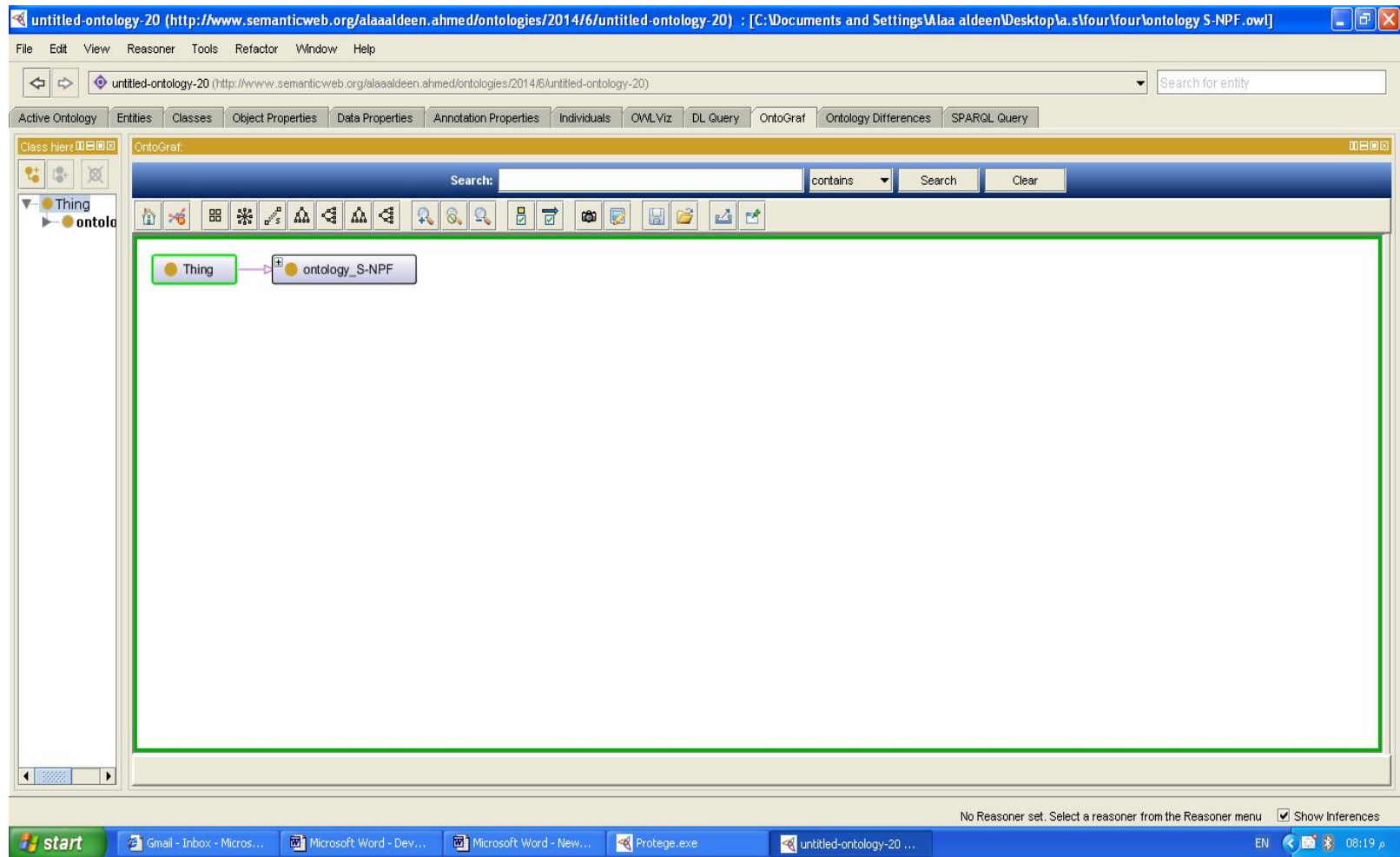
The main and sub classes of ontology



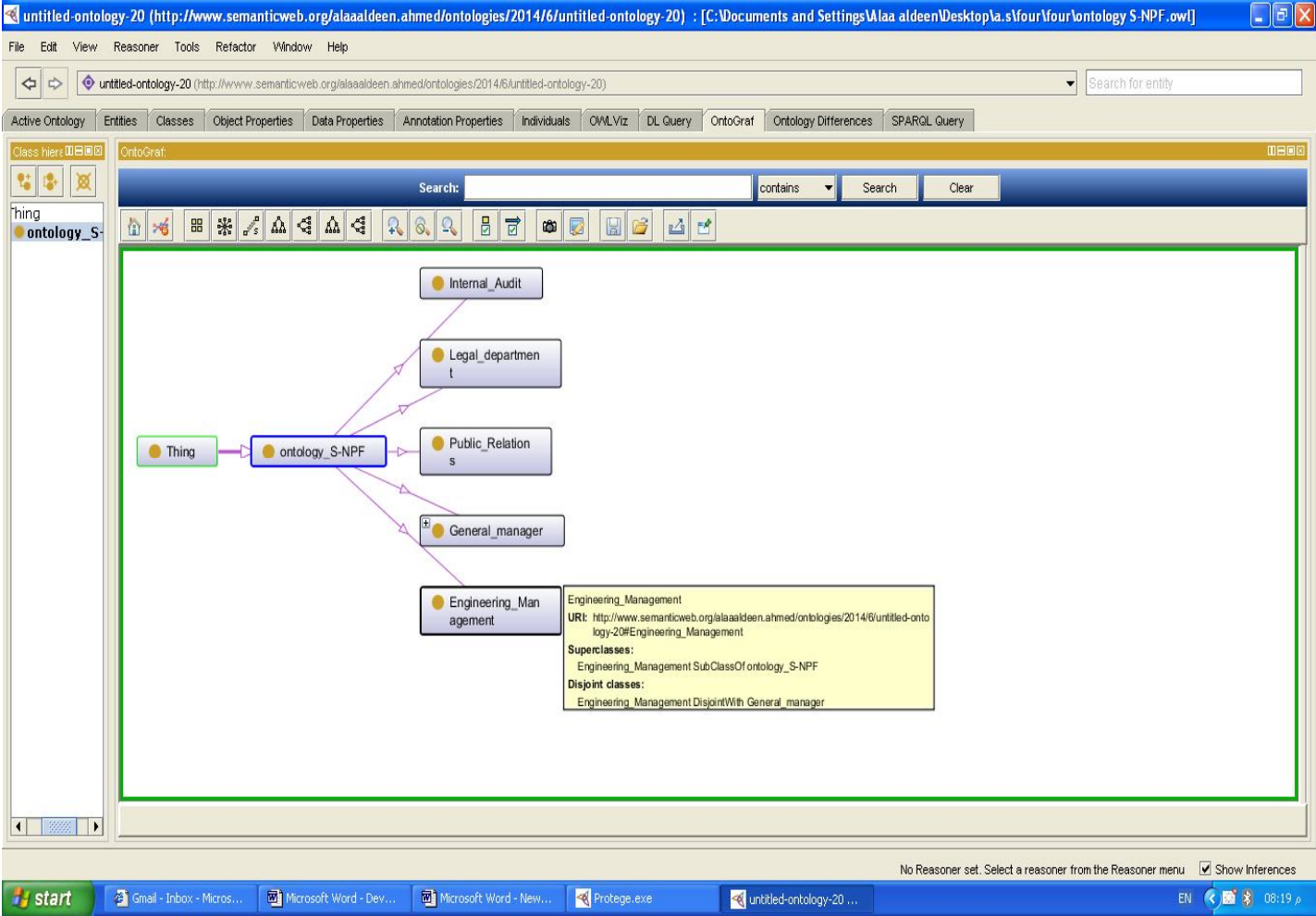
Main classes , sub classes ,and instances



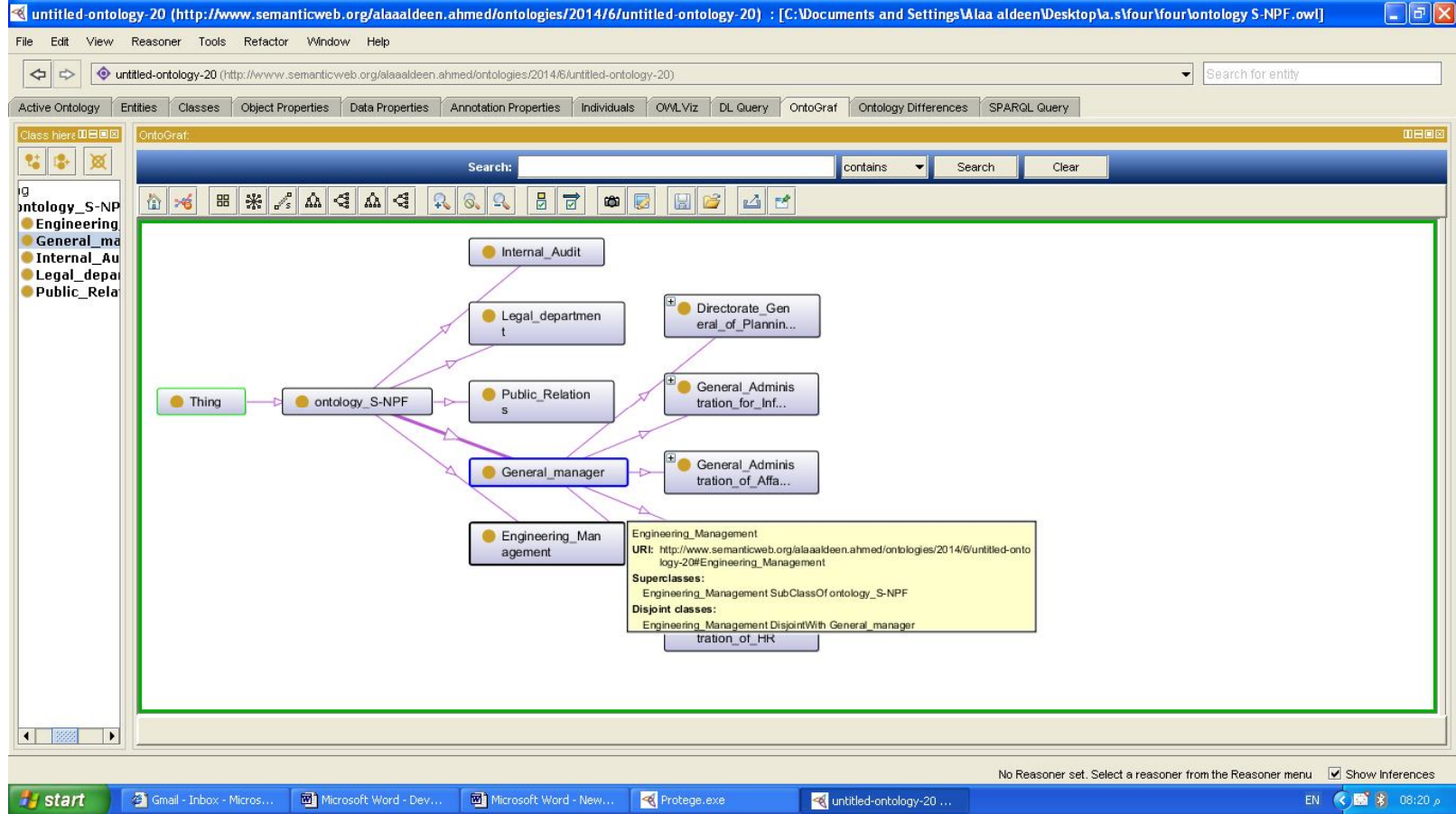
The properties of ontology



Main onto grave of ontology



Tree horizontal of ontology



Tree horizontal – sub classes

untitled-ontology-20 (http://www.semanticweb.org/alaaaldeen.ahmed/ontologies/2014/6/untitled-ontology-20) : [C:\Documents and Settings\Alaa aldeen\Desktop\la.s\four\four\ontology S-NPF.owl]

File Edit View Reasoner Tools Refactor Window Help

untitled-ontology-20 (http://www.semanticweb.org/alaaaldeen.ahmed/ontologies/2014/6/untitled-ontology-20) Search for entity

Active Ontology Entities Classes Object Properties Data Properties Annotation Properties Individuals OWL Viz DL Query OntoGraf Ontology Differences SPARQL Query

Class hierarchy

ontology_S-NPF

- Engineering_M
- General_mana
- Directorate
- General_Ad
- General_Ad
- General_Ad
- General_Ad
- Internal_Audit
- Legal_departm
- Public_Relation

OntoGraf

Search: contains Search Clear

No Reasoner set. Select a reasoner from the Reasoner menu Show Inferences

start Gmail - Inbox - Micros... Microsoft Word - Dev... Microsoft Word - New... Protege.exe untitled-ontology-20 ... EN 08:22

Tree horizontal – sub classes, instances

untitled-ontology-20 (http://www.semanticweb.org/alaaaldeen.ahmed/ontologies/2014/6/untitled-ontology-20) : [C:\Documents and Settings\Alaa aldeen\Desktop\la.sfour\four\ontology S-NPF.owl]

File Edit View Reasoner Tools Refactor Window Help

untitled-ontology-20 (http://www.semanticweb.org/alaaaldeen.ahmed/ontologies/2014/6/untitled-ontology-20) Search for entity

Active Ontology Entities Classes Object Properties Data Properties Annotation Properties Individuals OWL Viz DL Query OntoGraf Ontology Differences SPARQL Query

Class hierz OntoGraf

Search: contains Search Clear

```

graph TD
    Thing --> ontology_S-NPF
    ontology_S-NPF --> Internal_Audit
    ontology_S-NPF --> Legal_departmen_t
    ontology_S-NPF --> Public_Relation_s
    ontology_S-NPF --> General_manager
    ontology_S-NPF --> Engineering_Man_agement
    Public_Relation_s --> General_Adminis_tration_for_Inf...
    Public_Relation_s --> General_Adminis_tration_of_Affa...
    Public_Relation_s --> General_Adminis_tration_for_bra...
    Engineering_Man_agement --> Directorate_Gen_eral_of_Plannin...
    Engineering_Man_agement --> General_Adminis_tration_of_HR
    Internal_Audit --> Branches_state
    Internal_Audit --> Services
    Internal_Audit --> Benefits
    Internal_Audit --> Actuarial_Studi_es
    Internal_Audit --> Information
    Internal_Audit --> Finance
    Internal_Audit --> Legislation_and_Fatwa
    Internal_Audit --> Human_Resources
    Internal_Audit --> Follow-up
  
```

Class hierarchy list:

- ontology_S-NPF
- Engineering_M
- General_mana
- Directorate
- General_Ad
- General_Ad
- General_Ad
- General_Ad
- internal_Audit
- legal_departm
- Public_Relatio

No Reasoner set. Select a reasoner from the Reasoner menu Show Inferences

start Gmail - Inbox - Micros... Microsoft Word - Dev... Microsoft Word - New... Protege.exe untitled-ontology-20 ... EN 08:22 p

<?xml version="1.0?>

] DOCTYPE Ontology!>

< "#ENTITY xsd "http://www.w3.org/2001/XMLSchema!>

< "ENTITY xml "http://www.w3.org/XML/1998/namespace!>

< "#ENTITY rdfs "http://www.w3.org/2000/01/rdf-schema!>

< "#ENTITY rdf "http://www.w3.org/1999/02/22-rdf-syntax-ns!>

<[

"#Ontology xmlns="http://www.w3.org/2002/07/owl>

"xml:base="http://www.semanticweb.org/alaaaldeen.ahmed/ontologies/2014/6/untitled-ontology-20

"#xmlns:rdfs="http://www.w3.org/2000/01/rdf-schema

"#xmlns:xsd="http://www.w3.org/2001/XMLSchema

"#xmlns:rdf="http://www.w3.org/1999/02/22-rdf-syntax-ns

"xmlns:xml="http://www.w3.org/XML/1998/namespace

<"ontologyIRI="http://www.semanticweb.org/alaaaldeen.ahmed/ontologies/2014/6/untitled-ontology-20

</"#Prefix name="" IRI="http://www.w3.org/2002/07/owl>

</"#Prefix name="owl" IRI="http://www.w3.org/2002/07/owl>

</"#Prefix name="rdf" IRI="http://www.w3.org/1999/02/22-rdf-syntax-ns>

</"#Prefix name="xsd" IRI="http://www.w3.org/2001/XMLSchema>

</"#Prefix name="rdfs" IRI="http://www.w3.org/2000/01/rdf-schema>

<Annotation>

</"AnnotationProperty abbreviatedIRI="rdfs:comment>

(Literal datatypeIRI="&xsd:string">Description :Domain Ontology for the Sudanese's national pension fund (S-NPF>

Author : Alaa aldeen mohammed ahmad

E-mail yardahmoh@gmail.com

<Cerate : july 2014</Literal

<Annotation/>

<Declaration>

</"Class IRI="#Directorate_General_of_Planning_and_Development>

<Declaration/>
<Declaration>
</"Class IRI="#Electronic_Archiving>
<Declaration/>
<Declaration>
</"Class IRI="#Engineering_Management>
<Declaration/>
<Declaration>
</"Class IRI="#Finance>
<Declaration/>
<Declaration>
</"Class IRI="#General_Administration_for_Information_Systems>
<Declaration/>
<Declaration>
</"Class IRI="#General_Administration_for_branches>
<Declaration/>
<Declaration>
</"Class IRI="#General_Administration_of_Affairs_Actuary>
<Declaration/>
<Declaration>
</"Class IRI="#General_Administration_of_HR>
<Declaration/>
<Declaration>
</"Class IRI="#General_manager>
<Declaration/>
<Declaration>
</"Class IRI="#Human_Resources>
<Declaration/>
<Declaration>
</"Class IRI="#Internal_Audit>

<Declaration/>
<Declaration>
</"Class IRI="#Legal_department>
<Declaration/>
<Declaration>
</"Class IRI="#Networks_and_Information_Security>
<Declaration/>
<Declaration>
</"Class IRI="#Programming_and_Systems>
<Declaration/>
<Declaration>
</"Class IRI="#Public_Relations>
<Declaration/>
<Declaration>
</"Class IRI="#Records>
<Declaration/>
<Declaration>
</"Class IRI="#Services>
<Declaration/>
<Declaration>
</"Class IRI="#Technical_support_and_operating>
<Declaration/>
<Declaration>
</"Class IRI="#ontology_S-NPF>
<Declaration/>
<Declaration>
</"ObjectProperty IRI="#is_part_of>
<Declaration/>
<Declaration>
</"NamedIndividual IRI="#Accounts_Branches>

<Declaration/>
<Declaration>
</"NamedIndividual IRI="#Actuarial_Studies>
<Declaration/>
<Declaration>
</"NamedIndividual IRI="#Administrative_Development>
<Declaration/>
<Declaration>
</"NamedIndividual IRI="#Affairs_offices>
<Declaration/>
<Declaration>
</"NamedIndividual IRI="#Archive_Financial>
<Declaration/>
<Declaration>
</"NamedIndividual IRI="#Bank_accounts>
<Declaration/>
<Declaration>
</"NamedIndividual IRI="#Benefits>
<Declaration/>
<Declaration>
</"NamedIndividual IRI="#Branches_state>
<Declaration/>
<Declaration>
</"NamedIndividual IRI="#Budget>
<Declaration/>
<Declaration>
</"NamedIndividual IRI="#Electronic_Archiving>
<Declaration/>
<Declaration>
</"NamedIndividual IRI="#Follow-up>

<Declaration/>
<Declaration>
</"NamedIndividual IRI="#General_accounts>
<Declaration/>
<Declaration>
</"NamedIndividual IRI="#Human_Resource_Planning>
<Declaration/>
<Declaration>
</"NamedIndividual IRI="#Information>
<Declaration/>
<Declaration>
</"NamedIndividual IRI="#Legislation_and_Fatwa>
<Declaration/>
<Declaration>
</"NamedIndividual IRI="#Maintenance_of_facilities>
<Declaration/>
<Declaration>
</"NamedIndividual IRI="#Money_and_debt>
<Declaration/>
<Declaration>
</"NamedIndividual IRI="#Networks_and_Information_Security>
<Declaration/>
<Declaration>
</"NamedIndividual IRI="#Operation_and_maintenance_of_vehicles>
<Declaration/>
<Declaration>
</"NamedIndividual IRI="#Periodic_Review>
<Declaration/>
<Declaration>
</"NamedIndividual IRI="#Policies_and_programs>

<Declaration/>
<Declaration>
</"NamedIndividual IRI="#Procurement_and_stores>
<Declaration/>
<Declaration>
</"NamedIndividual IRI="#Programming_and_systems>
<Declaration/>
<Declaration>
</"NamedIndividual IRI="#Records>
<Declaration/>
<Declaration>
</"NamedIndividual IRI="#Revenue>
<Declaration/>
<Declaration>
</"NamedIndividual IRI="#Service_Affairs>
<Declaration/>
<Declaration>
</"NamedIndividual IRI="#Social_Affairs>
<Declaration/>
<Declaration>
</"NamedIndividual IRI="#Statistics>
<Declaration/>
<Declaration>
</"NamedIndividual IRI="#Storage_accounts>
<Declaration/>
<Declaration>
</"NamedIndividual IRI="#Studies_and_Polling>
<Declaration/>
<Declaration>
</"NamedIndividual IRI="#Technical_support_and_operating>

```
<Declaration/>
<Declaration>
</"NamedIndividual IRI="#Wages>
<Declaration/>
<SubClassOf>
</"Class IRI="#Directorate_General_of_Planning_and_Development>
</"Class IRI="#General_manager>
<SubClassOf/>
<SubClassOf>
</"Class IRI="#Electronic_Archiving>
</"Class IRI="#General_Administration_for_Information_Systems>
<SubClassOf/>
<SubClassOf>
</"Class IRI="#Engineering_Management>
</"Class IRI="#ontology_S-NPF>
<SubClassOf/>
<SubClassOf>
</"Class IRI="#Finance>
</"Class IRI="#General_Administration_of_HR>
<SubClassOf/>
<SubClassOf>
</"Class IRI="#General_Administration_for_Information_Systems>
</"Class IRI="#General_manager>
<SubClassOf/>
<SubClassOf>
</"Class IRI="#General_Administration_for_branches>
</"Class IRI="#General_manager>
<SubClassOf/>
<SubClassOf>
</"Class IRI="#General_Administration_of_Affairs_Actuary>
```

```
</"Class IRI="#General_manager>
<SubClassOf/>
<SubClassOf>
</"Class IRI="#General_Administration_of_HR>
</"Class IRI="#General_manager>
<SubClassOf/>
<SubClassOf>
</"Class IRI="#General_manager>
</"Class IRI="#ontology_S-NPF>
<SubClassOf/>
<SubClassOf>
</"Class IRI="#Human_Resources>
</"Class IRI="#General_Administration_of_HR>
<SubClassOf/>
<SubClassOf>
</"Class IRI="#Internal_Audit>
</"Class IRI="#ontology_S-NPF>
<SubClassOf/>
<SubClassOf>
</"Class IRI="#Legal_department>
</"Class IRI="#ontology_S-NPF>
<SubClassOf/>
<SubClassOf>
</"Class IRI="#Networks_and_Information_Security>
</"Class IRI="#General_Administration_for_Information_Systems>
<SubClassOf/>
<SubClassOf>
</"Class IRI="#Programming_and_Systems>
</"Class IRI="#General_Administration_for_Information_Systems>
<SubClassOf/>
```



```

<SubClassOf>
</"Class IRI="#Public_Relations>
</"Class IRI="#ontology_S-NPF>
<SubClassOf/>
<SubClassOf>
</"Class IRI="#Records>
</"Class IRI="#General_Administration_for_Information_Systems>
<SubClassOf/>
<SubClassOf>
</"Class IRI="#Services>
</"Class IRI="#General_Administration_of_HR>
<SubClassOf/>
<SubClassOf>
</"Class IRI="#Technical_support_and_operating>
</"Class IRI="#General_Administration_for_Information_Systems>
<SubClassOf/>
<DisjointClasses>
</"Class IRI="#Engineering_Management>
</"Class IRI="#General_manager>
<DisjointClasses/>
<DisjointClasses>
</"Class IRI="#General_manager>
</"Class IRI="#Internal_Audit>
<DisjointClasses/>
<DisjointClasses>
</"Class IRI="#General_manager>
</"Class IRI="#Legal_department>
<DisjointClasses/>
<DisjointClasses>
</"Class IRI="#General_manager>

```

```
</"Class IRI="#Public_Relations>
<DisjointClasses/>
<ClassAssertion>
</"Class IRI="#Finance>
</"NamedIndividual IRI="#Accounts_Branches>
<ClassAssertion/>
<ClassAssertion>
</"Class IRI="#General_Administration_of_Affairs_Actuary>
</"NamedIndividual IRI="#Actuarial_Studies>
<ClassAssertion/>
<ClassAssertion>
</"Class IRI="#Directorate_General_of_Planning_and_Development>
</"NamedIndividual IRI="#Administrative_Development>
<ClassAssertion/>
<ClassAssertion>
</"Class IRI="#Services>
</"NamedIndividual IRI="#Affairs_offices>
<ClassAssertion/>
<ClassAssertion>
</"Class IRI="#Finance>
</"NamedIndividual IRI="#Archive_Financial>
<ClassAssertion/>
<ClassAssertion>
</"Class IRI="#Finance>
</"NamedIndividual IRI="#Bank_accounts>
<ClassAssertion/>
<ClassAssertion>
</"Class IRI="#General_Administration_for_branches>
</"NamedIndividual IRI="#Benefits>
<ClassAssertion/>
```

```
<ClassAssertion>
</"Class IRI="#General_Administration_for_branches>
</"NamedIndividual IRI="#Branches_state>
<ClassAssertion/>
<ClassAssertion>
</"Class IRI="#Finance>
</"NamedIndividual IRI="#Budget>
<ClassAssertion/>
<ClassAssertion>
</"Class IRI="#General_Administration_for_Information_Systems>
</"NamedIndividual IRI="#Electronic_Archiving>
<ClassAssertion/>
<ClassAssertion>
</"Class IRI="#General_Administration_for_branches>
</"NamedIndividual IRI="#Follow-up>
<ClassAssertion/>
<ClassAssertion>
</"Class IRI="#Finance>
</"NamedIndividual IRI="#General_accounts>
<ClassAssertion/>
<ClassAssertion>
</"Class IRI="#Human_Resources>
</"NamedIndividual IRI="#Human_Resource_Planning>
<ClassAssertion/>
<ClassAssertion>
</"Class IRI="#General_Administration_for_branches>
</"NamedIndividual IRI="#Information>
<ClassAssertion/>
<ClassAssertion>
</"Class IRI="#General_Administration_of_Affairs_Actuary>
```

```

</"NamedIndividual IRI="#Legislation_and_Fatwa>
<ClassAssertion/>
<ClassAssertion>
</"Class IRI="#Services>
</"NamedIndividual IRI="#Maintenance_of_facilities>
<ClassAssertion/>
<ClassAssertion>
</"Class IRI="#Finance>
</"NamedIndividual IRI="#Money_and_debt>
<ClassAssertion/>
<ClassAssertion>
</"Class IRI="#General_Administration_for_Information_Systems>
</"NamedIndividual IRI="#Networks_and_Information_Security>
<ClassAssertion/>
<ClassAssertion>
</"Class IRI="#Services>
</"NamedIndividual IRI="#Operation_and_maintenance_of_vehicles>
<ClassAssertion/>
<ClassAssertion>
</"Class IRI="#General_Administration_for_branches>
</"NamedIndividual IRI="#Periodic_Review>
<ClassAssertion/>
<ClassAssertion>
</"Class IRI="#Directorate_General_of_Planning_and_Development>
</"NamedIndividual IRI="#Policies_and_programs>
<ClassAssertion/>
<ClassAssertion>
</"Class IRI="#Finance>
</"NamedIndividual IRI="#Procurement_and_stores>
<ClassAssertion/>

```

```
<ClassAssertion>
</"Class IRI="#General_Administration_for_Information_Systems>
</"NamedIndividual IRI="#Programming_and_systems>
<ClassAssertion/>
<ClassAssertion>
</"Class IRI="#General_Administration_for_Information_Systems>
</"NamedIndividual IRI="#Records>
<ClassAssertion/>
<ClassAssertion>
</"Class IRI="#Finance>
</"NamedIndividual IRI="#Revenue>
<ClassAssertion/>
<ClassAssertion>
</"Class IRI="#Human_Resources>
</"NamedIndividual IRI="#Service_Affairs>
<ClassAssertion/>
<ClassAssertion>
</"Class IRI="#General_Administration_for_branches>
</"NamedIndividual IRI="#Social_Affairs>
<ClassAssertion/>
<ClassAssertion>
</"Class IRI="#Directorate_General_of_Planning_and_Development>
</"NamedIndividual IRI="#Statistics>
<ClassAssertion/>
<ClassAssertion>
</"Class IRI="#Finance>
</"NamedIndividual IRI="#Storage_accounts>
<ClassAssertion/>
<ClassAssertion>
</"Class IRI="#Directorate_General_of_Planning_and_Development>
```

```
</"NamedIndividual IRI="#Studies_and_Polling>  
<ClassAssertion/>  
<ClassAssertion>  
</"Class IRI="#General_Administration_for_Information_Systems>  
</"NamedIndividual IRI="#Technical_support_and_operating>  
<ClassAssertion/>  
<ClassAssertion>  
</"Class IRI="#Finance>  
</"NamedIndividual IRI="#Wages>  
<ClassAssertion/>  
<Ontology/>  
<-- Generated by the OWL API (version 3.4.2) http://owlapi.sourceforge.net --!>
```

tree vertical – classes ,subclasses ,instances