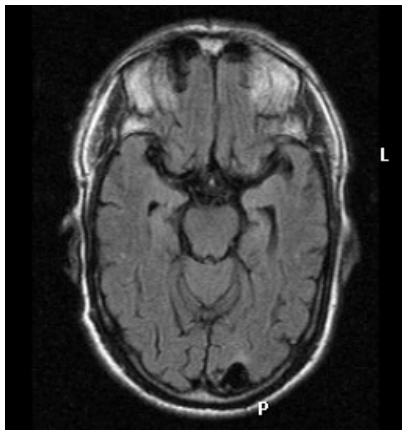
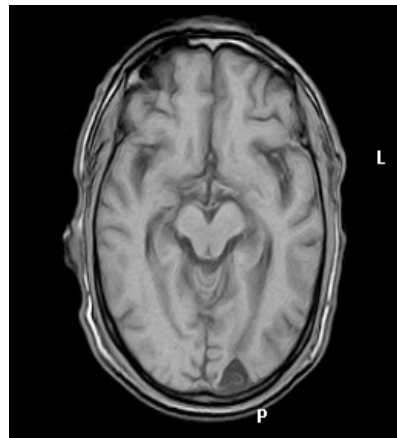


CASE (1)

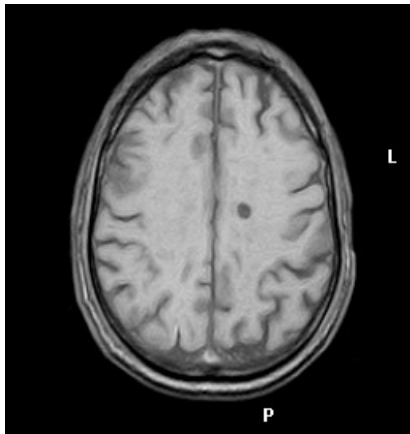
Case of (62) years old male, MRI/MRA showing cerebral infarction.



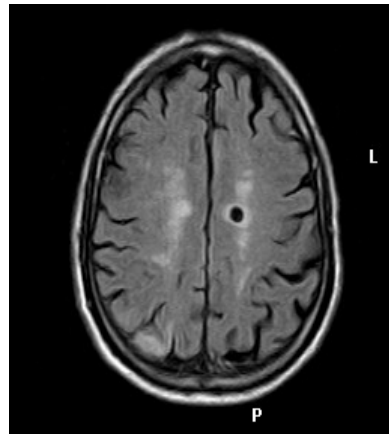
(A) FLAIR AXIAL



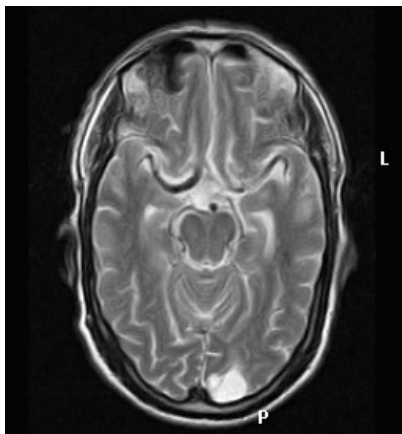
(B) T1W AXIAL



(C) T1W AXIAL



(D) FLAIR AXIAL



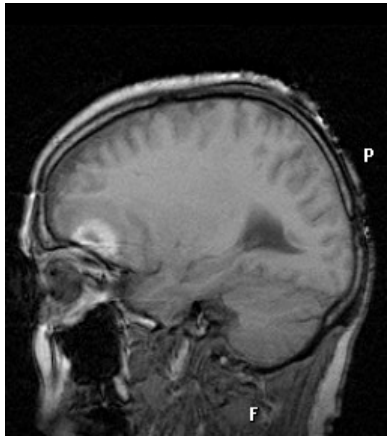
(E) T2W AXIAL



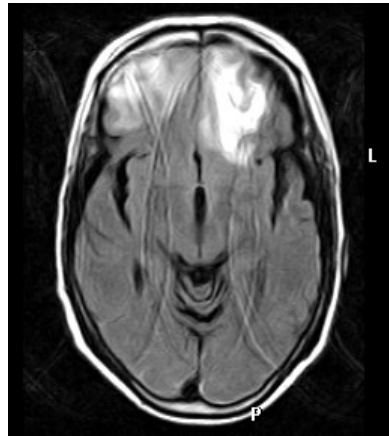
(F) MRA

CASE (2)

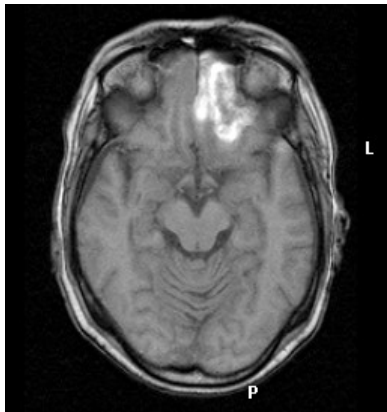
Case of (58) years old female, MRI/ MRA showing cerebral infarction.



(A) Sagittal T1W



(B) FLAIR AXIAL



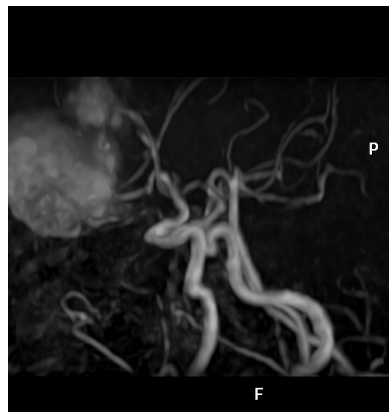
(C) T1W AXIAL



(D) MRA



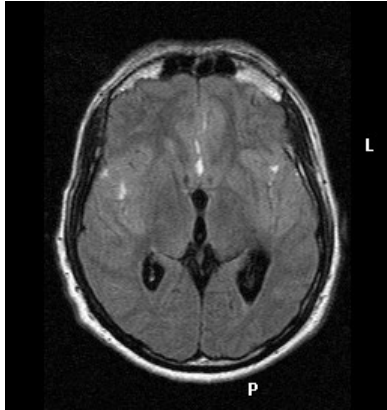
(E) MRA



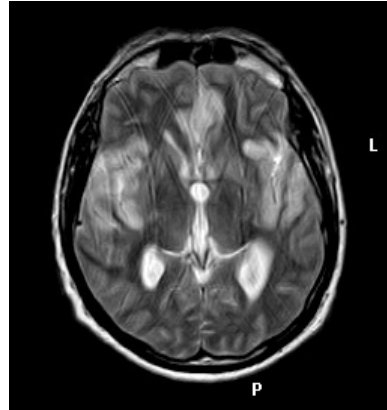
(F) MRA

CASE (3)

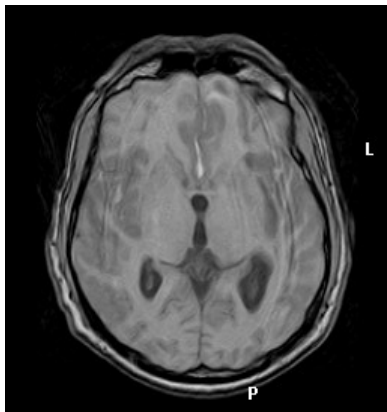
Case of (60) years old male, MRI/ MRA showing cerebral infarction.



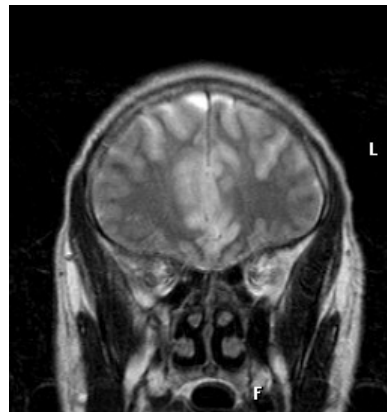
(A) T1W AXIAL



(B) FLAIR AXIAL



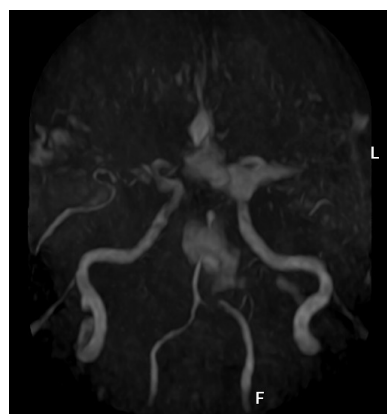
(C) T1W AXIAL



(D) T2W CORONAL



(E) T2W CORONAL



(F) MRA

CASE (4)

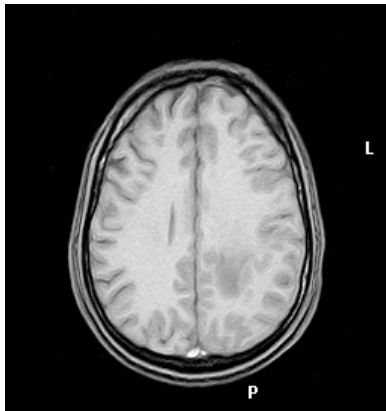
Case of (45) years old male, MRI/ MRA showing normal brain.



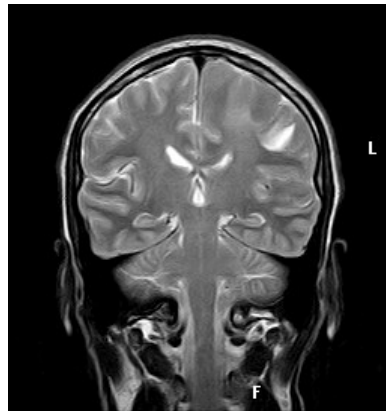
(A) T2W CORONAL



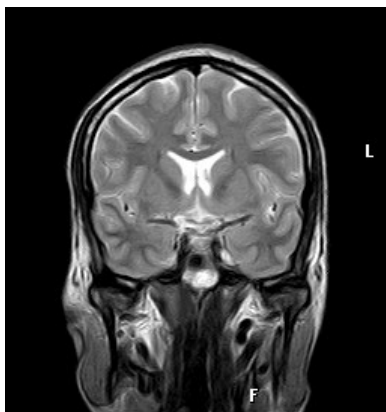
(B) T2W CORONAL



(C) T1W AXIAL



(D) T1W Sagittal



(E) T1W Sagittal



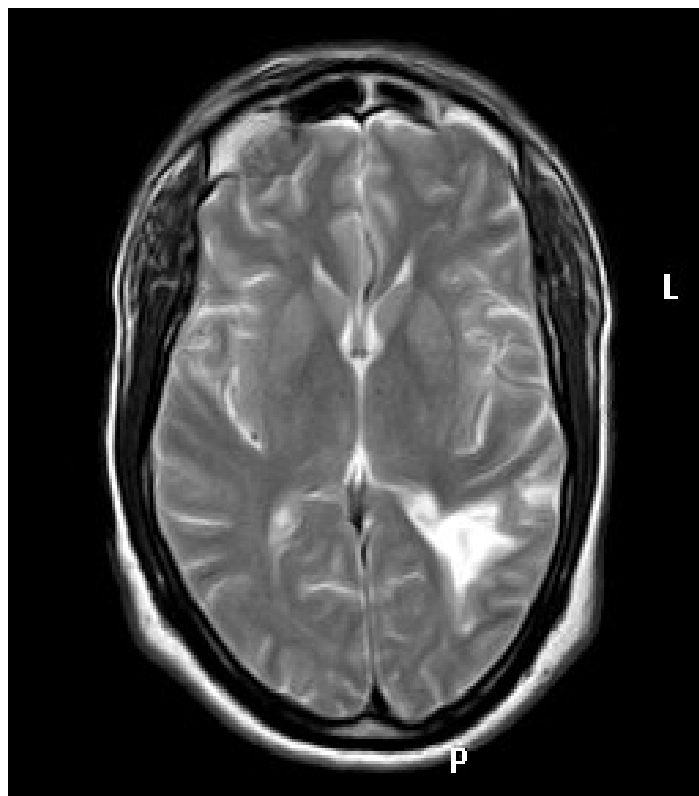
(F) MRA

CASE (5)

Case of (59) years old male, MRI/ MRA showing cerebral infarction.



(A) MRA



(B) T2W AXIAL