

Figur (6): Percentage of discarded fruits in tomato var.Beto 86.

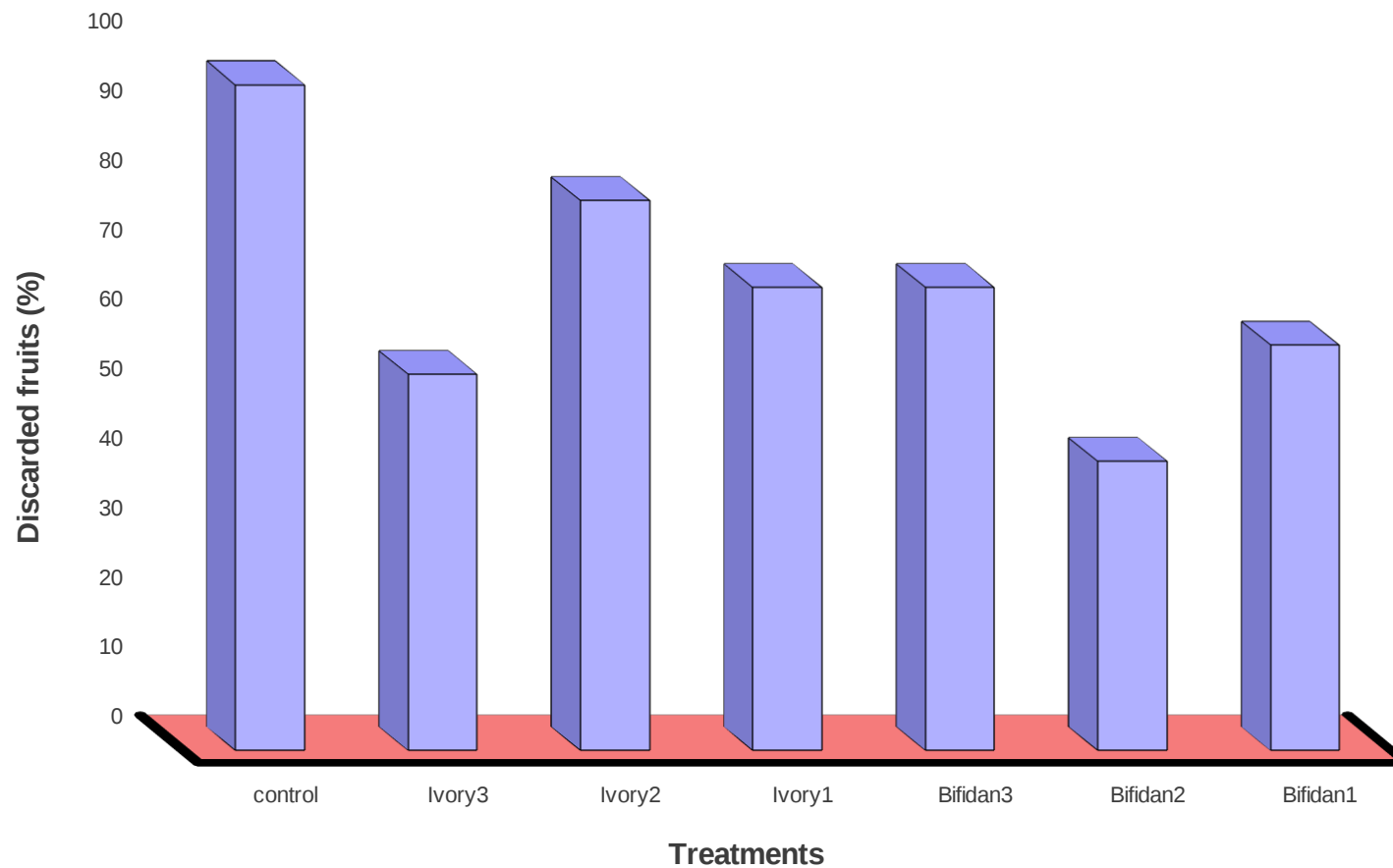


Fig (6) Percentage of discarded fruits in tomato var. Beto 86

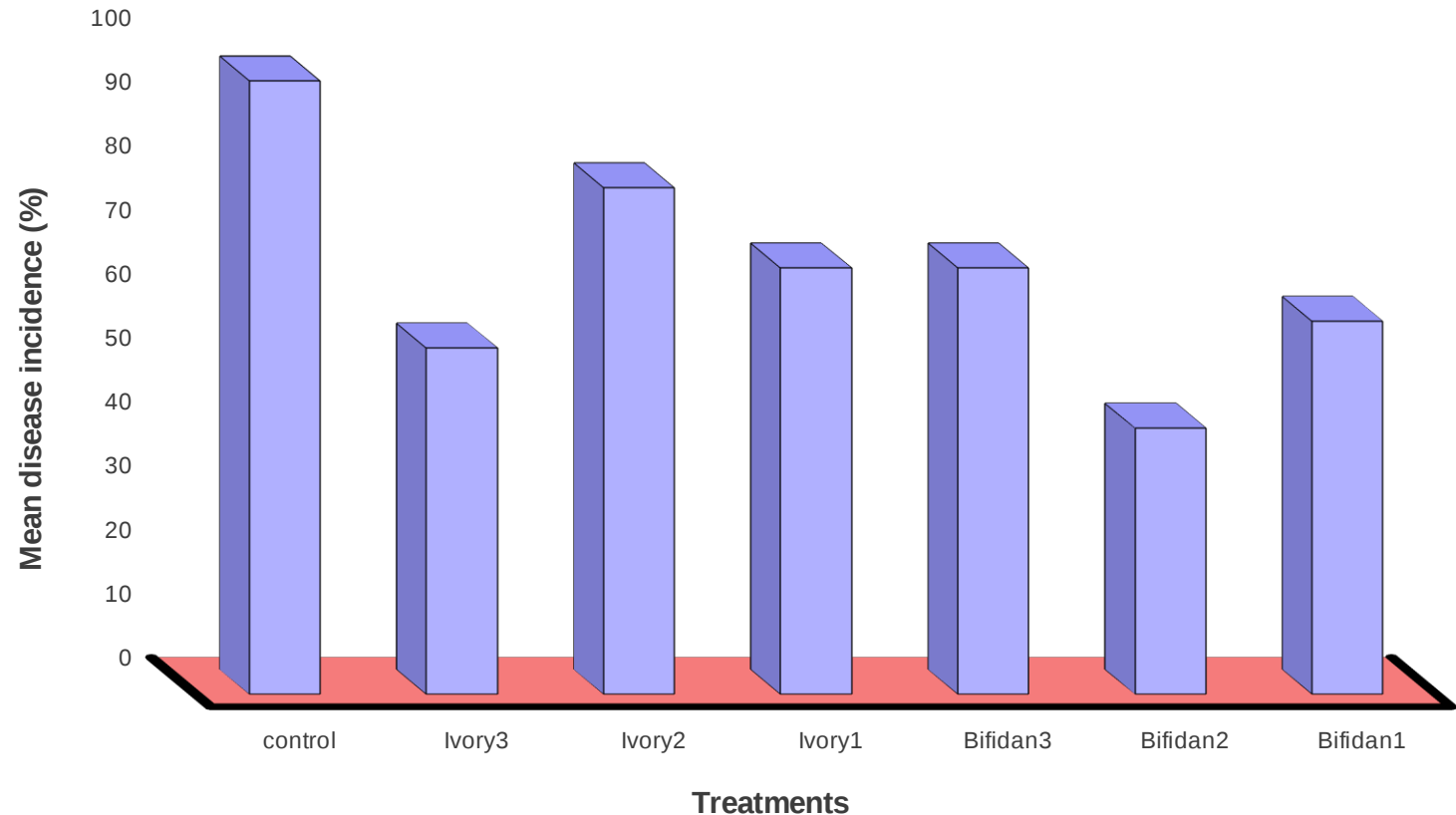


Fig (2) Disease incidence in tomato var. Beto 86 (1st count)

33.1
33.7
39.1
27.4
37.8
32.3
63.3

Bifidan1	58.33
Bifidan2	41.66
Bifidan3	66.66
Ivory1	66.66
Ivory2	79.16
Ivory3	54.16
control	95.83

0.83
1
1.2
0.95
0.81
1.1

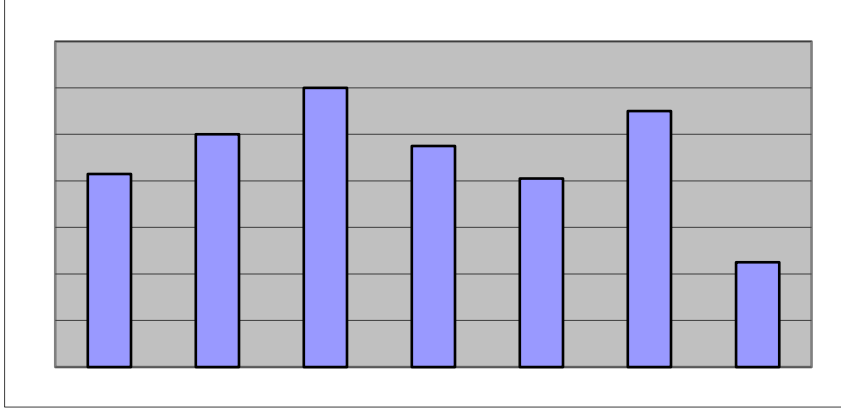
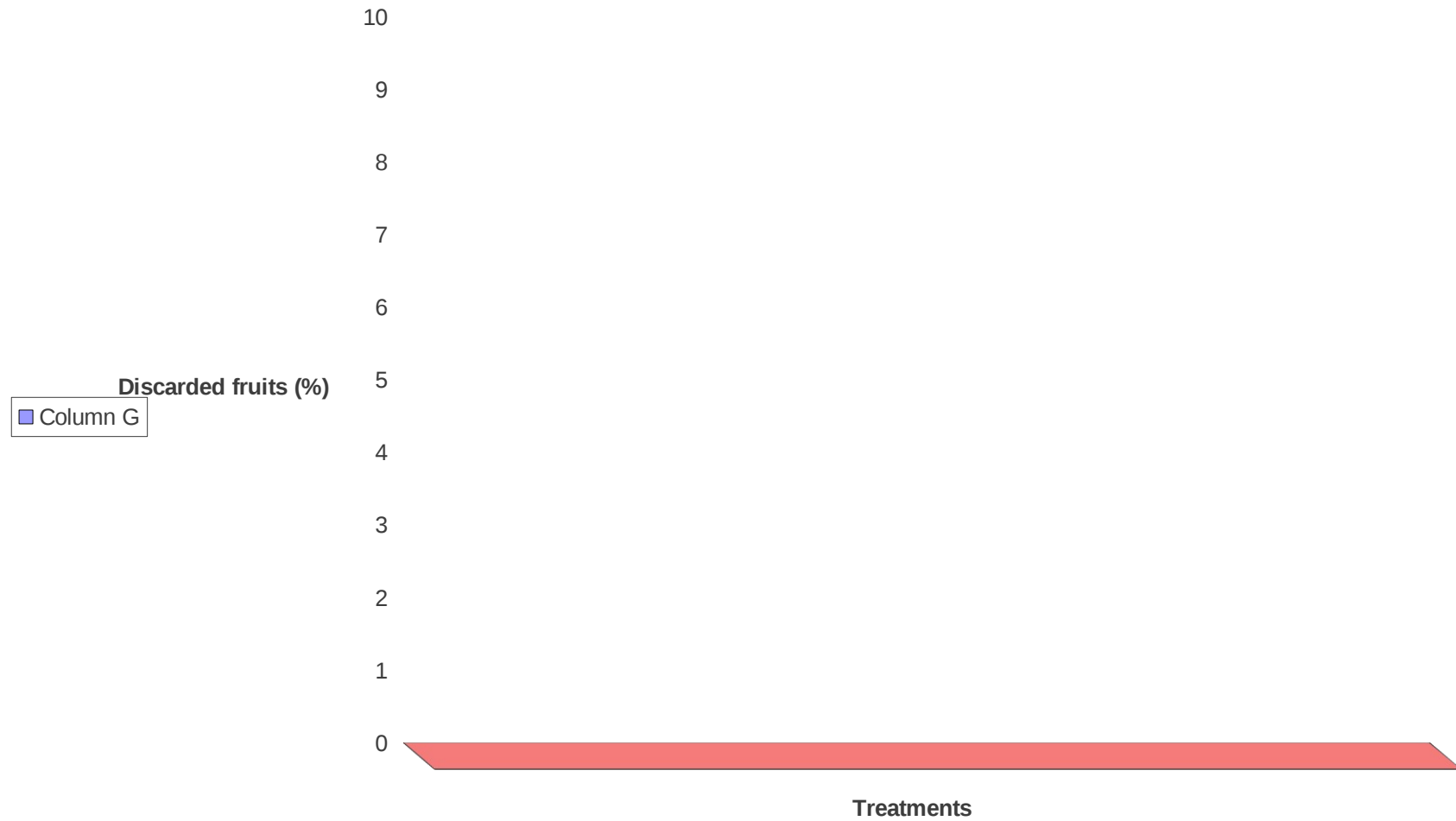


Fig (6) Percentage of discarded fruits in tomato var. Beto 86



	63.3	32.3	37.8	27.4	39.1	33.7	33.1
control	Ivory3	Ivory2	Ivory1	Bifidan3	Bifidan2	Bifidan1	