

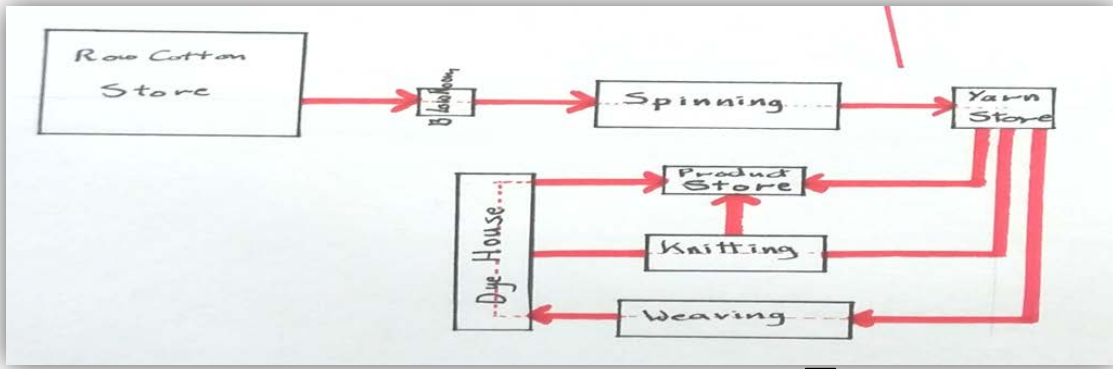
ARCHITECTURAL DESIGN

Design Philosophy:-

- **"Form ever follows function"** - Louis Sullivan.
- If the shape of the building was not going to be chosen out of the old pattern book something had to determine form, and according to Sullivan it was going to be the purpose of the building.
- According to Lamarck's long-discredited theory of evolution, the form is altered by the required function.
- The style of architecture should reflect its purpose.

Design Concept:-

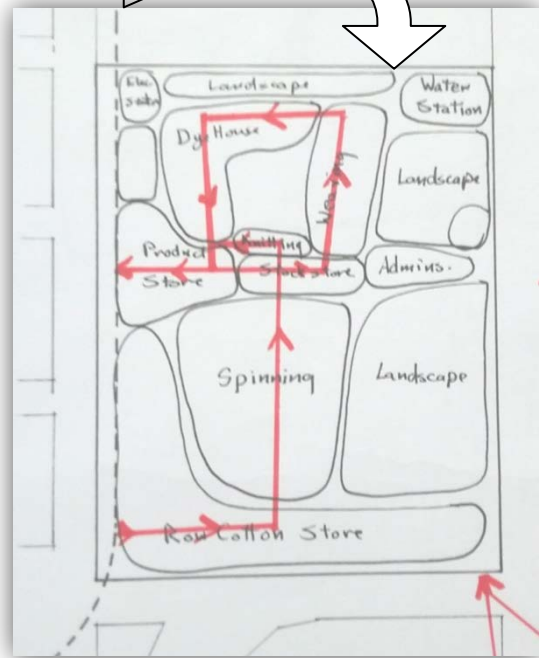
- The design idea is based primarily on the function of the building and the functional relations between the spaces and the production line, while attempting to create flexibility and dynamism in the form.
- The idea was first formed by the shape resulting from the tinting.
- Site is formed with 2 triangles. Large one with the orientation east- west is the production halls' building, the other small one with the orientation north-south contains the administration building to get the best natural ventilation



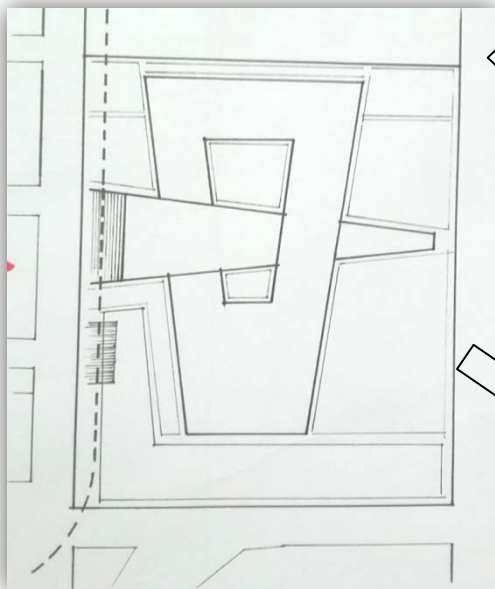
(4-1) Production Line



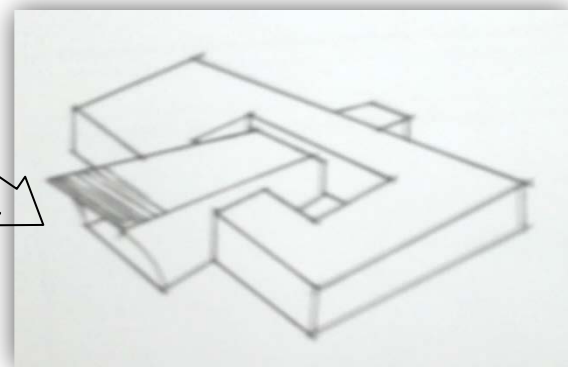
(4-2) Site (Railway)



(4-3) Zoning



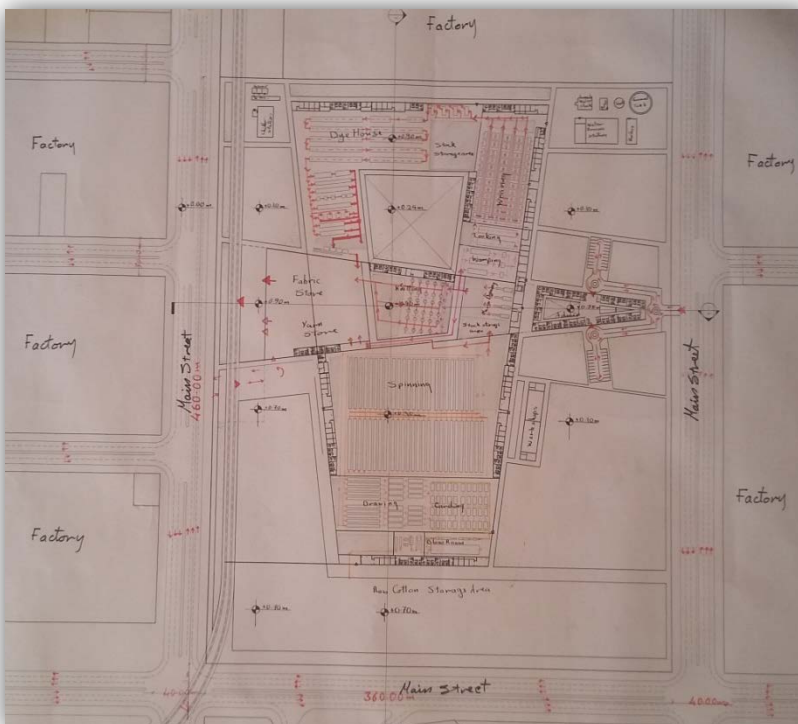
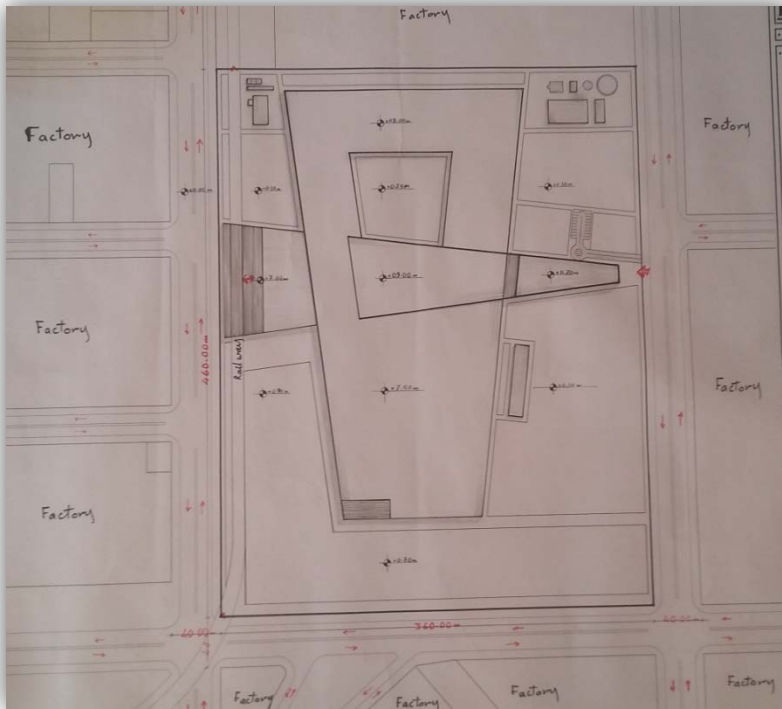
(4-4) Forming

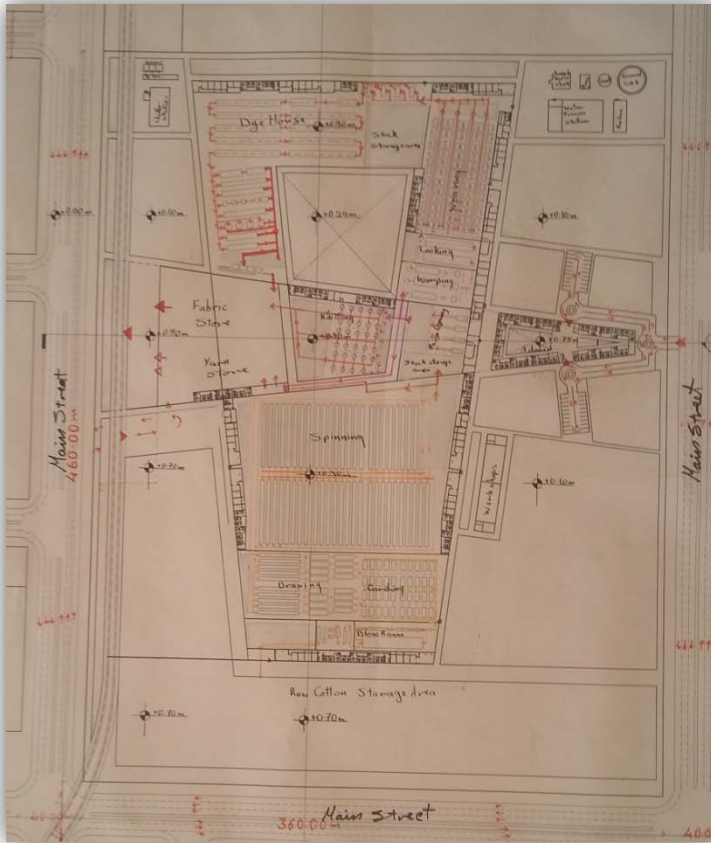


(4-5) 3D Forming

Design Development:- (with drawings, problems and how I've solved them until I reached the final design)

The initial idea:





Problems in the initial design:

- Wasted areas in the spinning production hall.
- Administration building's entrance was facing services.