

بسم الله الرحمن الرحيم

**Sudan University of Science and Technology
College of Graduate Studies**

Study of Shoulder Pain Using MRI

دراسة ألام الكتف باستخدام تقنية الرنين المغنطيسي

*A thesis Submitted for Partial Fulfillment Requirement of Master
Degree in Diagnostic Radiological Technology*

By:

Thwuiba Abdelhamed Ahmed Soliman

Supervisor:

Prof: Caroline Edward Eyad

2017

الآية

بسم الله الرحمن الرحيم

قال تعالى:

اقْرَأْ بِاسْمِ رَبِّكَ الَّذِي خَلَقَ ﴿١﴾ خَلَقَ الْإِنْسَانَ مِنْ عَلَقٍ ﴿٢﴾ اقْرَأْ وَرَبُّكَ الْأَكْرَمُ
الَّذِي عَلَّمَ بِالْقَلَمِ ﴿٤﴾ عَلَّمَ الْإِنْسَانَ مَا لَمْ يَعْلَمْ ﴿٥﴾

صدق الله العظيم

سورة العلق الآيات (1-5)

Dedication

To.....

My family

My teachers

My friends

My colleagues

Acknowledgment

Firstly I thanks my God for his help to finish
this
Work Successfully.

I would like to express my deepest gratitude
dedication to
My supervisor Prof: Caroline Edward for her
guidance.

I also need to thank for all people to finish
this work.

Abstract:

The main objective of study is to determine the underline of shoulder pain using MRI , this study carried out in the Modern Medical center in Khartoum state which equipped by high quality machine among the MRI GE 1.5 tesla . A total of 50 patients for this study(28 male 22 female,) aged from (16 years to 76 years), weight between(<60 Kg t0 >99 Kg)), almost all those complaining of persistent shoulder pain, most of them were under gone routine plain shoulder radiographs. More than 70%(35) of patient showed evidences of rotator cuff tear of different grades the most common muscle effected was supraspinatus (64%)32 of cases, that would not be seen in radiography, most of them were elder patient(28%)14 of sample were from age class above 50 (55-64), explaining that elder population are susceptible to cuff tears, and at high risk and occurrence of the shoulder pain increase with weight(62%)80-99 kg .

The study verified that MRI the best to demonstrate soft tissue with high quality diagnostic.

مستخلص البحث

اجريت هذه الدراسة بالمركز الطبى الحديث بولاية الخرطوم حيث يوجد به جهاز رنين مغنطيسى ذو كفاءة عالية,1.5 تسلا. تهدف هزة الدراسة الى دراسة الام الكتف باستخدام تقنية الرنين المغنطيسى.

اجريت هزة الدراسة على 50 مريض معظمهم كانوا يعانون من الام بالكتف وكانت اعمارهم ما بين 16-76 واجريت لهم فحوصات اشعة روتينية سابقة.

كانت نتائج هذه الدراسة مطابقة للدراسات السابقة,حيث اوضحت فحوصات الرنين المغنطيسى ان 70%(35)من الحالات تعاني من تمزق فى اربطة عضلات الكتف والتي لم تكن واضحة فى الاشعة الروتينية,كما اوضحت ان المرضى زوى الاعمارالكبيرة الذين كان عددهم 14 (55-64 سنة)28%والمرضى الذين يعانون من الوزن الزايد(80-99 كيلو جرام وعددهم 31)(62%) معرضون اكثر من غيرهم لآلام الكتف المزمن.

اوضحت هزة الدراسة ان فحوصات الرنين المغنطيسى ذات دقة عالية لتوضح التمزقات فى العضلات والاربطة والانسجة المحيطة بالكتف.

Contents

Table of Contents

الآية.....	I
Dedication.....	II
Acknowledgment	III
Abstract:.....	IV
مستخلص البحث	V
Contents	VI
List of tables.....	IX
List of figures.....	X
Abbreviations	XI
Chapter one: Introduction.....	
1.1: Introduction:.....	1
1-2 Problem of the study:	1
1-3 Objective of the study:	2
1-3-1General objectives:	2
1-3-2 Specific objectives:.....	2
1-4 Significance of the study:.....	2
1-5 Overview of the study:	2
Chapter two :Literature Review and theoretical background	
2.1: Anatomy:	3
2.1.1Bony structure of the shoulder:.....	4
2.1.1.1Scapula:.....	4
2-1.1.2Humerus:.....	4
2-1-1-3 Clavicle:	5
2.1.2 Soft tissue of shoulder joint:	5
2-1-2-1 The deep fascia:.....	5
2-1-2-2 The Deltoid muscle:	6
2-1-2-3 Subscapularis muscle:.....	6

2.1.2-4: Supraspinatus muscle:	6
2-1-2-4 Infraspinatus muscle:	7
2-1-2-5 Teres minor muscle:	8
2-1-2-6 Teres Major:	8
2-1-2-7 Biceps Brachialis muscle:.....	8
2.1.2.9: The pectoralis minor muscles:	9
2.2: Physiology:	9
2-2-1 Contraction of muscle:.....	9
2-2-2 Simple muscles twitch:	10
2-2-3 Summation of contraction:.....	10
2-2-4. The events in muscle contraction:	11
2-2-5 The Deltoid muscle:.....	11
2-2-6 Subscapularis muscle:.....	11
2-2-7 Supraspinatus muscle:.....	11
2-2-8 Infraspinatus muscle:	11
2-2-9 Teres minor muscle:.....	12
2-2-10 Biceps Brachialis muscle:	12
2-3 Pathology:.....	12
2-3-1 Shoulder pain:.....	12
2-3-2 humeral head fractures:	13
2-3-3 Lesser tuberosity fractures:	13
2-3-4 Rotator cuff tendinitis:	13
2-3-5: Dislocated shoulder Injury:	13
2-3-6: Rotator cuff calcific Tendonitis injury:	13
2-3-7: Broken Collar bone Injury:	14
2-3-8 Rotator cuff tear:.....	14
2-4: Imaging Modalities:	14
2-4-1 Plain radiographs (X-ray).....	14
2-4-3. Ultrasound (US):.....	16

2-4-4 Magnetic resonance imaging (MRI):.....	18
2-5 History of Magnetic Resonance Imaging (MRI):	18
2-6 How MRI work:	18
2-7: Previous studies:	19
Chapter three: Material and Methods	
3.1 Materials:	21
3.1.1. Patients:	21
3.1.2 Equipment:	21
3.1.2.1 <i>MRI machine</i> :	21
3.1.2.2 Shoulder coil	21
3-2 Methods	21
3-2-1 Technique:	21
3-4: Protocol used	22
3.2.3: Who identify the type of pathology:	22
Chapter four: Results	
results.....	23
Chapter five :Discussion, conclusion, and recommendations	
5.1. Discussion:	27
5. 2. Conclusion:	28
5.3 Recommendations:	29
References:.....	30
Appendix:	31

List of tables

Table	Page
4-1. Distribution of patient gender	23
4-2. Patients age distribution	24
4-3. Patients weight distribution	25
4-5. Show the most common finding of shoulder pain in Relation to frequency.	26
4-4.the MRI finding of shoulder pain in relation to frequency	26
4-5.The diagnosis *gender cross tabulation	27
4-6.The diagnosis *age class cross tabulation	28
4-7.The diagnosis *weight class cross tabulation	28
4-8.The most common anatomical part effected*diagnosis cross tabulation	29

List of figures

Figure	Page
2-1. Anatomy of the shoulder	3
2-2. Scapula, posterior aspect and lateral	4
2-3. Shoulder muscle	7
2-4. Shoulder tendons and ligaments	8
2-5. Show plain radiography shoulder joint	18
2-6. Show computed tomography shoulder joint	19
2-7. Show ultrasound shoulder joint	19
2-8. Show magnetic resonance imaging shoulder joint	20
4-1. Distribution of patient gender	23
4-2. Patient's age distribution	24
4-3. Patients weight distribution	25
4-5. Show the most common cause of shoulder pain in Relation to frequency	36
4-6. Show the diagnosis*gender distrebution	27

Abbreviations

CT	Computed Tomography
C3	Third cervical nerve segment
C4	Fourth cervical nerve segment
C5	Fifth cervical nerve segment
C6	Sixth cervical nerve segment
FOV	Field of view
FSE	Fast spin echo
GT	Greater tuberosity
Hrs.	Hours
LHB	Long head of biceps
MRI	Magnetic Resonance Imaging
PD	Proton density
SE	Spin echo
T1	Inversion time
US	Ultra Sound

Chapter One

Introduction

Chapter one

Introduction

1.1: Introduction:

The human shoulder is made up of three bones: the clavicle (collarbone), the scapula (shoulder blade), and the humerus (upper arm bone) as well as associated muscles, ligaments and tendons. The articulations between the bones of the shoulder make up the shoulder joints. The major joint of the shoulder is the glen humeral joint, which "shoulder joint" generally refers to. In human anatomy, the shoulder joint comprises the part of the body where the humerus attaches to the scapula, the head sitting in the glenoid fossa. The shoulder is the group of structures in the region of the joint. (Laughlin et al,2009).

Shoulder joint is a most movable joint in the body therefore being unstable because the humeral ball is larger than scapular socket that hold it, to remain in its stable position the shoulder must be anchored by muscle, tendons and ligament, because the shoulder can be unstable it is a common site of many problems, including strain, rotator cuff tear, dislocation tendonitis, frozen shoulder, degenerative disease. (Laughlin et al, 2009).

Magnetic resonance imaging (MRI), or nuclear magnetic resonance imaging (NMRI), is primarily a medical imaging technique most commonly used in radiology to visualize the internal structure and function of the body. (Brown , 1998).

The best diagnostic method of shoulder pain is a magnetic resonance imaging. The most common indications for shoulder MRI are suspected rotator cuff tear, shoulder instability, osteonecrosis, neoplasm and infection. (Mark,1998).

1-2 Problem of the study:

Shoulder pain is most common in Sudanese population the plain x-ray is failed in diagnosing of strains, sprain, tendonitis, bursitis, rotator cuff tears,frozen shoulder and tear of the shoulder joint so that Magnetic

Resonance Imaging (MRI) is capable to accurately diagnose the cause of pain in shoulder without ionizing radiation.

1-3 Objective of the study:

1-3-1 General objectives:

- To study the shoulder pain Causes using MRI.

1-3-2 Specific objectives:

- To assess the tendon- joint space.

- To detect the main underline causes of MRI finding.

- To correlate between shoulder pain, patient age, patient weight.

- To show optimum protocols in MRI with demonstrate in specific pathology.

1-4 Significance of the study:

This study explain the role of the magnetic resonance imaging in shoulder joint pain and help in good diagnosis of any shoulder abnormalities.

1-5 Overview of the study:

This study consisted of five chapters, chapter one is introduction and problem of the study and objective and significance of the study and overview of the study. Chapter two includes literature review and previous studies. Chapter three includes material and methodology. Chapter four includes data collection, results and analysis Chapter five includes conclusion and recommendation and appendix.

Chapter two

Introduction

Chapter two

Literature Review and theoretical background

2.1: Anatomy:

Shoulder girdle is composed of two main component on either sides, the scapula posterity and the clavicle interiorly, it is incomplete ring, open in the back between the two scapulae and complete in the front as clavicles are connected the sternum in the midline, the main purpose of this girdle is to maintain supportment to upper extremities, an provide attachment for muscles. (Snell ,1992).Fig.(2-1).

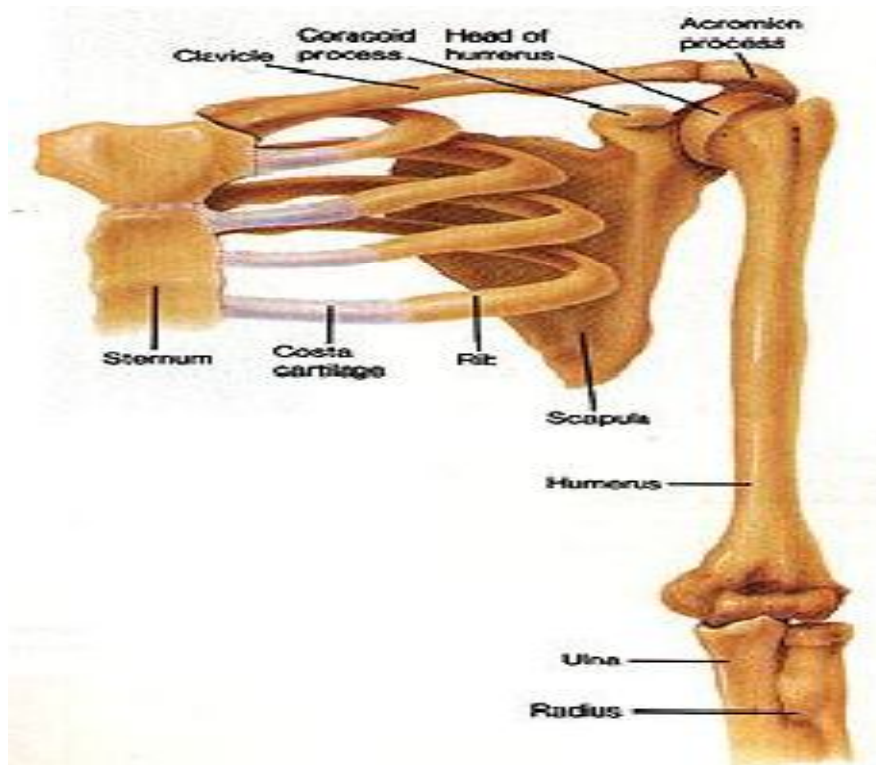


Figure [2-1]: Anatomy of the shoulder (Faisal, 2012)

2.1.1 Bony structure of the shoulder:

2.1.1.1 Scapula:

This bone has three prominent features, spine, acromion and coracoid processes. The spine is posterior aspect running obliquely across the scapula. The acromion process forms the tip of shoulder, and articulates with clavicle at acromio clavicular joint, providing attachment for several muscles of arm and chest. The coracoid process, which curves forward and down – ward below the clavicle, provides also attachment for arm and Chest muscles. Between these two processes, acromion and coracoid is a glenoid cavity, a hollow depression which articulates with humeral head to form a ball and socket glen humeral joint (Richard ,1992). Figure. (2.2).

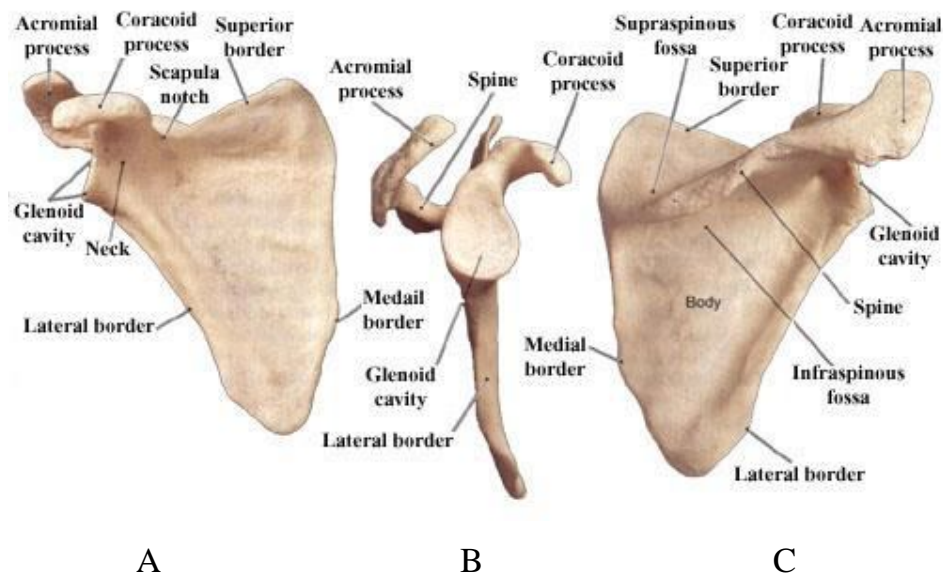


Figure [2.2]: (A) scapula, Anterior aspect (B) lateral (C) posterior view
(Faisal, 2012)

2-1.1.2 Humerus:

A longest bone of upper limb having expanded upper end, shaft and lower end, we shall describe the description on upper end. This consists of the convex articular surface, the anatomical neck and two tubercles, greater and lesser tubercles. The head has an area 3 times more than glenoid cavity, the tubercles are separated by bicipital groove, and this groove averages 4.3 mm in depth. Grooves which has less than 3mm depth are considerable shallow and has a high risk of long head of Biceps (LHB) dislocation or subluxation, the medial aspect of the groove which forms lesser tubercle is lower than lateral aspect of the groove resulting in higher incidence of medial subluxation of long head of Biceps (LHB) than lateral . (Snell, 1992).

2-1-1-3 Clavicle:

This bone courses almost horizontally across either chest sides, from the neck base to the shoulder, medially it articulates with sternum at the level of manubrium, and laterally it articulates with [p process of the scapula to form acromio clavicular joint, clavicle provide stability for scapula, and serves for attachment for several arm, chest and back muscle (Snell, 1992) .

Shoulder joint is protected superiorly by the two processes of the scapula, acromion and coracoids, and held together by various muscles and tendon fibers.

A loose capsule completely encircles the shoulder joint and attached around the circumference of glenoid cavity and anatomical neck of humerus this capsule is surrounded by several muscles and tendons which reinforce the joint and keep the humeral head and scapular in close proximity.

2.1.2 Soft tissue of shoulder joint:

2-1-2-1 The deep fascia:

The deep fascia covers the deltoid and sends a numerous septa between fascicle. In front, it is continuous with pectorals fascia, behind, where it is thick and strong with fascia infraspinatus, above, it is attached to the clavicle,

the acromion, and the crest of the scapular spine, below with brachial fascia. (Standing ,2006).

2-1-2-2 The Deltoid muscle:

Is a thick triangular muscle which covers the shoulder joint, it arises from the anterior border and upper surface of lateral third of the clavicle, from the lateral margin and upper surface of acromion, and from the lower lip of scapular spine. The fibers converge towards their insertion, the middle fibers passing vertically, the anterior inclining backwards, and the posterior fibers forward, these thin groups of fibers unites in a thick tendon which inserted into the deltoid tuberosity on the lateral side of the humeral shaft. This muscle is remarkably coarse in texture, the part arising from acromion consist of oblique fibers. (Standing,2006).

The bulk of the muscle spread out over the projection formed by the greater tuberosity, accounts for the rounded contour of normal shoulder, and its limits can be determined accurately through the skin, if the arm is maintain in a true abduction against gravity. (Standing ,2006).

2-1-2-3 Subscapularis muscle:

Is a large triangular muscle which fills the sub scapular fossa and arises from its medial two thirds, the fibers pass laterally and gradually converging, end in a tendon which inserts into the lesser tuberosity, some of these fibers continues crossing bicipital groove forming transverse ligament. Fig (2.3) interiorly: posterior wall of the axilla, posterior, scapula and capsule of shoulder joint, lower border, teres major and latissimus dersi.(Standing,2006).

2.1.2-4: Supraspinatus muscle:

The supraspinatus muscle occupies supraspinatus fossa arising from its medial two thirds and supraspinatus fascia the muscle fibers pass under the acromion and converge to a tendon which crosses the upper part of shoulder

joint and inserted into the highest of the three impressions of the greater tubercle G.T of humerus. Fig (2.3) (Standing, 2006)

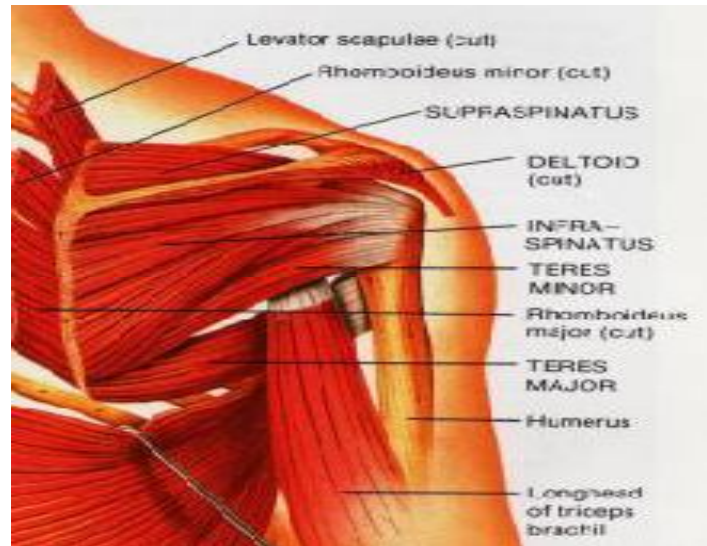


Figure (2-3) shoulder muscle (www.hawaiianshirtary.com)

2-1-2-4 Infraspinatus muscle:

It is a thick triangular muscle, which occupies the chief part of supraspinatus fossa. This muscle arises from the two medial third of infraspinatus fossa and deep fascia of infraspinatus. A bursa lies between the bare area of scapula and the muscle, sometimes it communicates to the shoulder joint, the tendons of this muscle insert into the smooth area on the central facet of greater tuberosity between supraspinatus above and teres minor below. Fig. (2.3) and (2.4) (Standing ,2006)

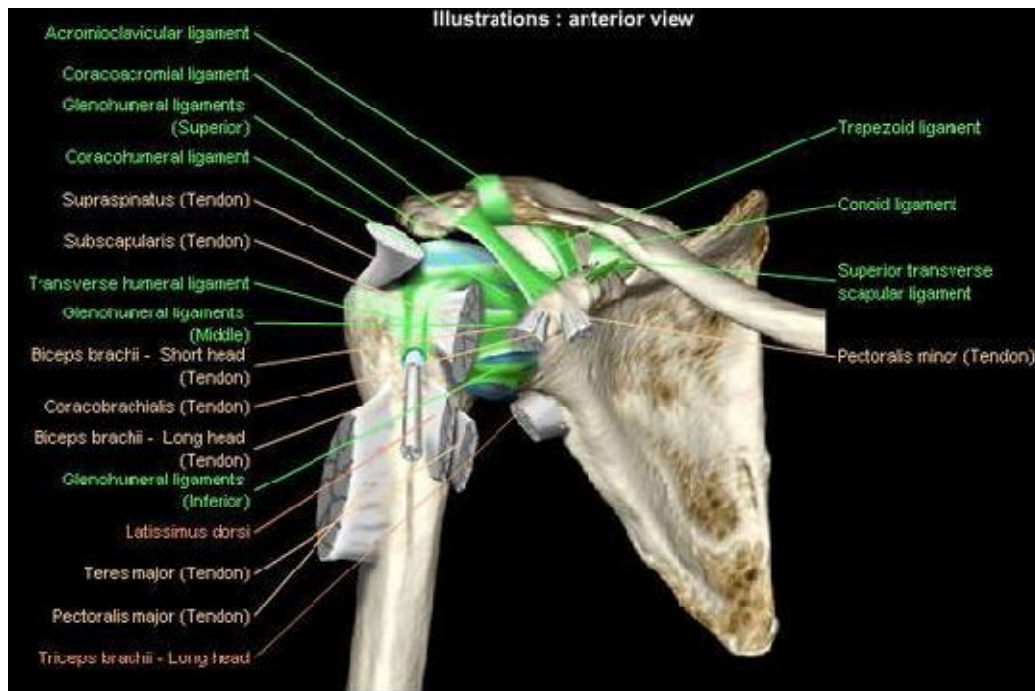


Figure. [2.4] shoulder tendons and ligaments(Alamin ,2012)

2-1-2-5 Teres minor muscle:

Is a narrow elongated muscle, this muscle arises from the dorsal surface of auxiliary border of the scapula, passing upwards and laterally with lower border of infraspinatus and behind the long head of triceps, its tendons attached to the lowest facet on the greater tuberosity G.T. Fig (2. 3) (Standing ,2006).

2-1-2-6 Teres Major:

Is a thick, somewhat flattened muscle, arises from the dorsal surface of inferior angle of the scapula, and inserted into the medial lip of the intertubercular sulcus of the humerus. (Standing ,2006).

2-1-2-7 Biceps Bjrachialis muscle:

Is a long, bursiform muscle placed on the front of the arm, it has two heads, the short head arises by a thick flattened tendon from the apex of the coracoids process with coracobrachialis, the long head takes origin within the fibrous capsule of shoulder joint at the apex of glenoid cavity and continues with glenoid labrum and unsheathed by a synovial membrane arches over

humeral head, passing behind transverse humeral ligament, descending in the intertubercular sulcus. (Standing 2006).

Relation: Overlapped by pectoralis major and deltoid muscles, but in the rest it is superficial, being covered only by fasciae, and skin, below it is on the brachial, and its medial border related to coracobrachialis, its lateral border is in relation with deltoid and brachioradialis. (Standing ,2006).

2-1-2-8: The pectoralis major muscles:

Is a broad triangular muscle which covers the front of the upper part of the chest . It arises from the anterior surface of the sternum and from the costal cartilage of the 2nd to 6th ribs. It is inserted into the lateral lip of the intertubercular sulcus of the humerus. (Dean et al,1987).

2.1.2.9: The pectoralis minor muscles:

Is a small muscle which lies deep to the pectoralis major .It arises from the 2nd, 3rd and 4th ribs and is inserted into the coracoid process of scapula .(Dean et al,1987).

2.2: Physiology:

The ability of human to move is predicated on specific cells that have become highly differentiated, so that they function almost exclusively in contraction. There are three types of muscle, skeletal, smooth, and cardiac muscles. There are basic similarities among the three muscle types. They are all mesodermally derived and are elongated parallel to their axis of contraction, they possess numerous mitochondria to accommodate their high energy requirements, and all contain contractile elements known as myofibrils in form of actin and myosin, as well as additional contractile-associated proteins(Sukkar, 2000).

2-2-1 Contraction of muscle:

Contraction is defined as active process of generating a mechanical force in muscle. The force exerted by contracting muscle on the object is known as muscle tension and the force exerted on muscle by a weight is known as load.

To lift a load muscle tension must be greater than muscle load (William, 2003).

2-2-2 Simple muscles twitch:

The contraction to a single action potential is called simple muscle twitch following the stimulus, there is an interval of a few milliseconds, known as the latent period, before contraction begins.

This is a time taken for action potential to develop if muscle is stimulated through its nerve, the latent period is longer because of the time taken in transmission at neuromuscular junction (William, 2003).

2-2-3 Summation of contraction:

A single twitch is of no mechanical value because its duration is very short. To produce sustained and coordinated muscle movements, single twitches' summate in two different ways. (Sukkar, 2000).

Spatial summation: The muscle fibers, together with the motor neuron which innervate them, constitute a motor unit. In spatial summation, stimulation of numerous nerve fibers causes an increasing number of motor units to excited. The response of single motor units are therefore added together to produce a strong contraction by the muscle.(Sukkar, 2000).

Temporal summation: When frequency summation rises above 10/s the second stimulus contraction develops before the first one is over. As frequency increases, the degree of the summation becomes greater producing stronger contraction every time in stepwise fashion. When muscle is stimulated at a progressively greater rate, a frequency is reached at which contractions fuse together and cannot be distinguished. This is called tantalization and contraction is a titanic contraction, which is smooth and maintained. Most contractions of muscles in everyday life are of this nature. They allow useful work to be done (Sukkar, 2000).

2-2-4. The events in muscle contraction:

Acetylcholine released by the motor nerve at the neuromuscular junction leads to formation of the EPP. In turn depolarizes the sarcolemma leading to formation of muscle action potential spreads to inside of the cell causing muscle contraction.

Relaxation back into sarcoplasmic reticulum, calcium is detached from troponin, troponin ceases pulling on tropomyosin resulting in muscle relaxation (William, 2003).

2-2-5 The Deltoid muscle:

Nerve supply: The deltoid muscle is supplied by auxiliary nerve C5 and C6.

Actions: The muscle is capable of acting in parts or as a whole, the anterior fibers co-operates with pectoralis major in drawing the arm forward and medial rotation. The posterior fibers co-operates with latissimus dorsi and major in drawing the arm backwards and they act as lateral rotation for humerus, the multitenant, acromial part is stronger and most important part aided by supraspinatus, it raises the arm from the side (true abduction). (Standing, 2006).

2-2-6 Subscapularis muscle:

Nerve supply: supplied by upper and lower subscapular nerve arising from upper trunk of brachial plexus receiving fibers from C5 and C6 (Susan Standing, 2006).

2-2-7 Supraspinatus muscle:

Nerve supply: supraspinatus is supplied by suprascapular nerve which receives fibers from C.4,5 and 6 (Standing, 2006).

2-2-8 Infraspinatus muscle:

Action: bracing the head of the humerus to glenoid cavity, giving stability to the joint, the muscle has also a powerful lateral rotation of the humerus (standing, 2006).

2-2-9 Teres minor muscle:

Nerve supply: by a branch from posterior branch of the axillary nerve C5 and C6.

Action: it acts as dynamic stabilizer for the shoulder joint, lateral rotation and weak adductor of the humerus. (Standing ,2006).

2-2-10 Biceps Brachialis muscle:

Nerve supply: The biceps is supplied by the musculocutaneous nerve from the lateral cord of brachial plexus receiving fibers from C.5 and C.6.

Action: Is a powerful supinator of the forearm, flexes the elbow joint, and to slight extent the shoulder joint. The long head exercises downward pressure on the upper end of the humerus, and so help to prevent the head of the bone from gliding upward under the influence of the deltoid. (Standing,2006).

2-3 Pathology:

Shallowness of glenoid fossa of scapula and lack of support provided by weak ligament make this joint an unstable structure, its strength almost entirely depend on the tone of rotator cuff, subscapularis in front, spraspinatus above, and infraspinatus and teres minor behind.

The least sported part of the joint lies in the inferior location, where it unprotected by muscles. (www.physioroom.com/injuries/shoulder).

2-3-1 Shoulder pain:

The skin over shoulder and halfway down the lateral surface of the deltoid muscle is supplied by the supra scapular nerves (C3,C4) pain may be referred to the region as a result of inflammatory lesion involving the diaphragmatic pleura or peritoneum. The afferent stimuli reach the spinal cord via phrenic nerves (C3,C4) and C5 pleurisy, peritonitis. Subphrenic abscess, or gallbladder disease may therefore be responsible for shoulder pain. (www.physioroom.com/injuries/shoulder).

2-3-2 humeral head fractures:

Humeral head fractures occur during the process of anterior and posterior dislocations of shoulder joint, the fibro-cartilaginous glenoid labrum of the scapula produce the fracture.

Bony fragment will have attachment to supraspinatus, teres minor whose tendons make a part of rotator cuff.

2-3-3 Lesser tuberosity fractures:

Occasionally lesser tuberosity fractures accompany posterior dislocation of shoulder joint then, bone fragment receive insertion of the subscapularis tendon a part of rotator cuff.

2-3-4 Rotator cuff tendinitis:

Excessive overhead activity of the upper limb may be the cause of the tendinitis. During abduction of shoulder joint the supraspinatus tendon is exposed to friction against the acromion. Under normal condition the amount of the friction is reduced by subacromial bursa (www.physioroom.com/injuries/shoulder).

Degenerative changes in underlying tendon, extending into other rotator cuff tendons which is known as subacromial bursitis, Supraspinatus tendon or precapsulitis characterized by spasm of pain in middle range of abduction (www.physioroom.com/injuries/shoulder).

2-3-5: Dislocated shoulder Injury:

In dislocated shoulder the normal rounded appearance of the shoulder will be replaced by a more squared-off edge. It characterized by severe shoulder pain, loss of shoulder movement and holding arm protectively against the chest (www.physioroom.com/injuries/shoulder).

2-3-6: Rotator cuff calcific Tendonitis injury:

Rotator cuff calcific Tendonitis injury is characterized by calcium deposits in the tendon of the rotator cuff muscles on the shoulder. The common symptoms of it are severe shoulder pain, Arm and neck pain, and shoulder weakness (www.physioroom.com/injuries/shoulder)

2-3-7: Broken Collar bone Injury:

A broken Collar bone (broken clavicle) is a very common shoulder injury. A broken Collar bone frequently occurs when someone falls onto an out stretched hand. The force transmitted up the arm is often enough to cause this painful shoulder fracture. (www.physioroom.com/injuries/shoulder).

2-3-8 Rotator cuff tear:

Rotator cuff tear occurs in advanced cases of cuff tendinitis; the necrotic supraspinatus tendon can become calcified or ruptured. Rupture of tendon can seriously interfere with the normal abduction movement of shoulder joint. It will be remembered that the main function of the supraspinatus muscle is to hold the head of humerus in glenoid fossa at commencement of abduction. The patient with ruptured supraspinatus tendon is unable to initiate abduction of the arm.

However if the arm is passively assisted for the first 15° of abduction, the deltoid can then take over and complete the movement to the right angle. (www.physioroom.com/injuries/shoulder).

2-4: Imaging Modalities:

2-4-1 Plain radiographs (X-ray)

X-rays evaluate bone dislocations, malalignments, fractures, and other changes to the bone tissue. Often x-rays are used to rule out a fracture problem; if the bone appears normal, then the focus can be shifted to other areas of concern. In the x-rays below, the bone structures are white or light gray in tone, and the soft tissue surrounding the bone remains dark., the other structures such as nerves, muscles, tendons, or rotator cuff are not usually seen. Figure: [2.5].



Figure.[2.5] show plain radiography shoulder joint. (Faisal, 2012)

2-4-2 Computed Tomography (CT):

Computed tomography may be used to evaluate bony lesions, including glenoid rim fractures, humeral fractures, and acromioclavicular joint disease. Computed tomography arthrograms may have a role in assessing labral tears and full-thickness rotator cuff tears. The use of CT arthrography has fallen into disfavor compared with MRI because of the risks associated with contrast exposure and poor sensitivity for partial-thickness rotator cuff tears or associated soft tissue injury. Figure.[2.6]

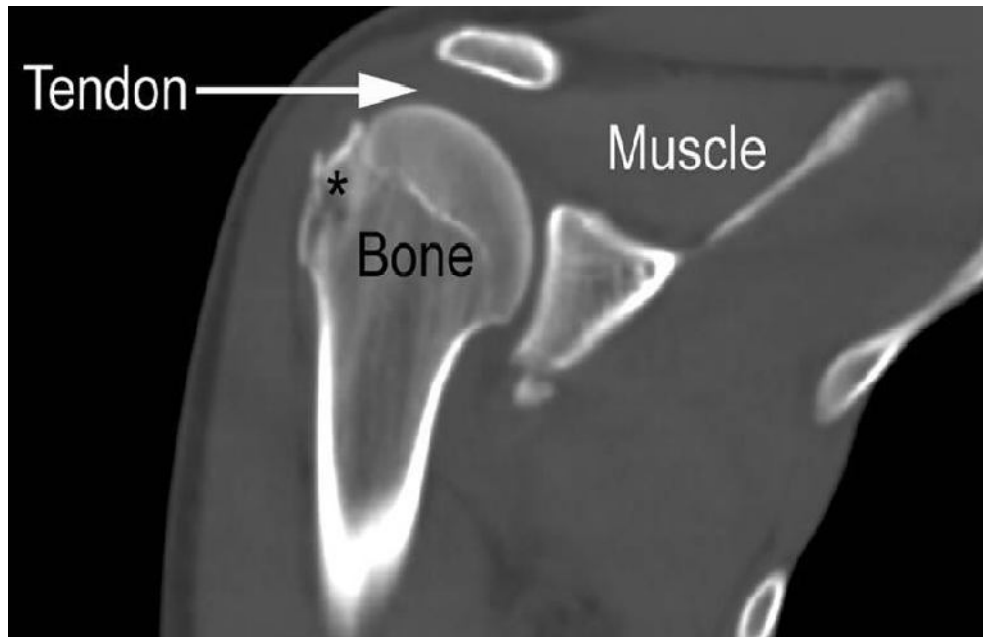


Figure.[2.6] show computed tomography shoulder joint (Faisal ,2012)

2-4-3. Ultrasound (US):

Ultrasound has been used in the evaluation of rotator cuff tears with varying degrees of sensitivity and specificity. This inconsistency may be related to variation in operator skill. Advantages of ultrasound include relatively low cost, speed, and noninvasiveness. Figure.[2.7]

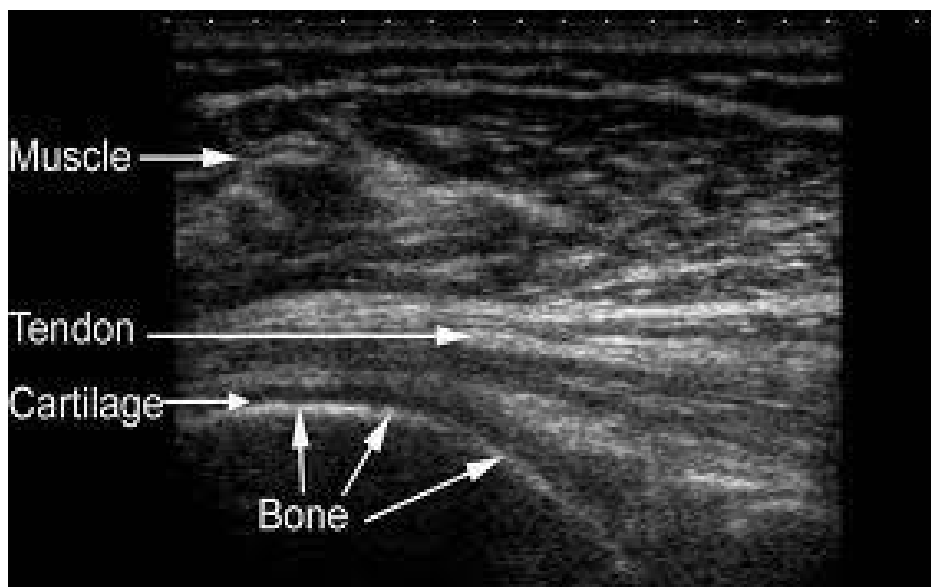


Figure.[2.7] show ultrasound shoulder joint (Faisal, 2012)

2-4-4 Magnetic resonance imaging (MRI):

Magnetic resonance imaging has become the gold standard for diagnostic imaging of the shoulder related to soft tissue injury. The advantages include its noninvasive nature, lack of contrast exposure, no ionizing radiation, high degree of resolution, and the ability to evaluate multiple potential pathologic processes. Magnetic resonance imaging is the preferred test for evaluating impingement syndrome and rotator cuff pathology. A normal MRI greatly reduces the chances of a rotator cuff tear, Magnetic resonance imaging is also useful in the evaluation of vascular necrosis, biceps tendon disorders, inflammatory processes, and tumors. And labral lesion . Finally, it is important to note that up to one third of all asymptomatic patients and more than half of those older than 60 years demonstrate asymptomatic rotator cuff tears on MRI. Figure: [2.8]

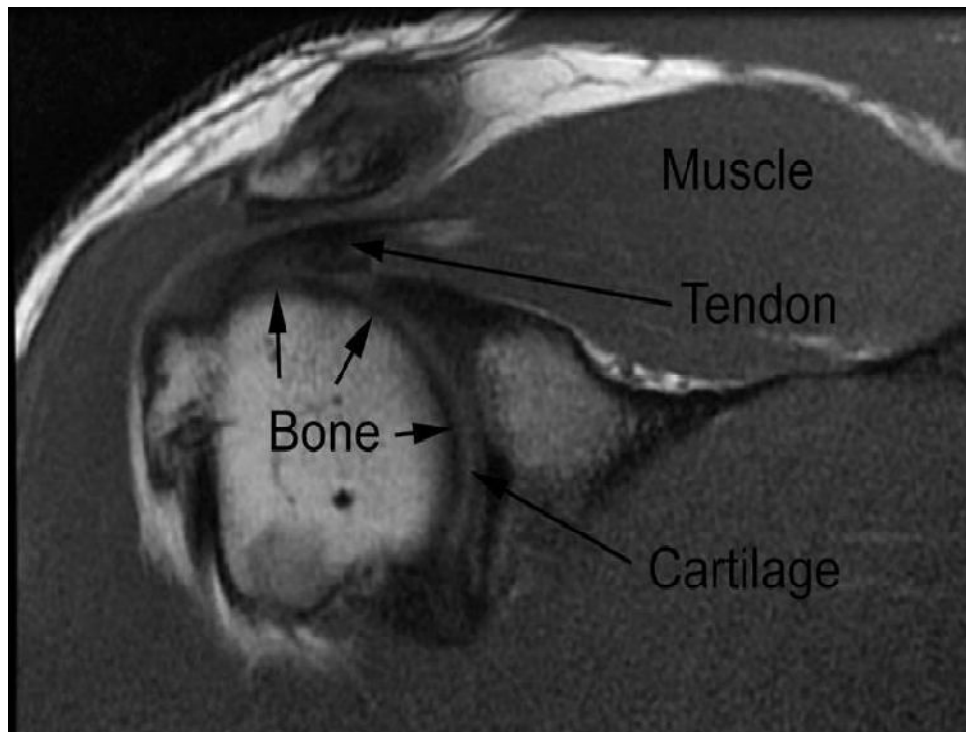


Figure: [2.8] coronal cut show magnetic resonance imaging shoulder joint
(Amin ,2012)

2-4-5 History of Magnetic Resonance Imaging (MRI):

July 3rd, 1977- the first live human scan was done. It took 5 hrs to complete.

1980's –NMR was renamed MRI due to the word “nuclear”.

1984 –The 1st MRI units were sold commercially. (Brown et al,1998)

2-4-6 How MRI work:

The magnetic field aligns atomic particles called protons that are present in most of the body tissue .Radio waves make this particles given a signal received in the scanner this signal converter device the computer process this data and give us various of sections (axial-horizontal –coronal) and high quality image.(Mark A.Brown.et al ,1998).

MRI scans are frequently used to evaluate the internal structures of the shoulder. A variety of trends have increased the use of MRI in evaluating the shoulder — more sports activity, repetitive motion injuries, and we've remained much more active into our later years than previous generations. A shoulder MRI generally takes about 30 minutes or so to complete. Wear loose comfortable clothing and remember to remove all metal (jewelry, phones, rings, etc) before going into the MRI scan room. Patient surgery or have a history of cancer, probably have the test done with Intra venous (IV) MRI contrast. Some shoulder MRIs are done after a direct injection of contrast into the joint. This is called an MR arthrogram of the Shoulder. (Tirman et al, 1996).

2-5: Previous studies:

Shah, et al (2008) studied eight-nine chronic stroke survivors with post-stroke shoulder pain underwent T1 and T2 weighed Multiplanar, multi sequence magnetic resonance imaging of the painful paretic shoulder. All scans were reviewed by one radiologist for the following abnormalities: rotator cuff, biceps and deltoid tears, tendonopathies and atrophy, subacromial bursa fluid, liberal ligament complex abnormalities, and acromio-clavicular capsular hypertrophy. Clinical variables included subject demographics, stroke characteristics and the Brief Pain Inventory Questions 12 (BPI 12). The relationship between MRI findings and clinical characteristics were assessed via logistic regression. Thirty-five percent of subjects exhibited a tear of at least 1 rotator cuff, biceps or deltoid muscle. Fifty-three percent of subjects exhibited tendon pathy of at least 1 rotator cuff, bicep or deltoid muscle. The prevalence of rotator cuff tears increased with age. However, rotator cuff tears and rotator cuff and deltoid tendonopathies were not related to severity of post-stroke shoulder pain. In approximately 20% of cases, rotator cuff and deltoid muscles exhibited evidence of atrophy. Atrophy was associated with reduced motor strength and reduced severity of shoulder pain.

DellaSala and Bianchini (1996) studied Eighty patients complaining of shoulder pain were examined with MRI from January, 1993, through December, 1994. Thirty of them were submitted to surgery, with an exhaustive inspection of shoulder structures and the treatment of abnormal findings. In this subgroup of surgical patients, MRI had depicted 16 complete tears of the rotator cuff, 4 partial tears, 8 cases of subacromial impingement, I humeral head osteochondritis and, finally, I humeral head osteochondritis with complete rotator cuff tear. Surgical findings confirmed MR diagnosis in 97% of cases. MR findings were then compared with literature data and some atypical features were observed in our series. MRI was totally reliable in

complete cuff tears (16/30 patients), always showing the involvement of supraspinatus tendons and, in some cases, of other cuff tendons. In partial cuff tears (4/30 patients), besides the classic pattern of a fissure in the deep/superficial supraspinatus tendon, we observed intra- and peritendinous changes, with no tendon interruption, due to diffuse micro lesions. When impingement due to subacromial space narrowing, with no cuff tear, was present (8/30 patients), MRI depicted different causes—e.g., acromioclavear arthritis, coracoacromial ligament hypertrophy and posttraumatic changes. MRI showed tendinitis in all patients but overestimated it in one case where partial cuff tear was not confirmed surgically—the only false positive in series. At surgery, all these cases were classified as stage I-II impingement (according to Meer's classification).

Chapter Three

Material and method

Chapter three

Material and Methods

3.1 Materials:

3.1.1. Patients:

In these study 50 patients (male 28 and female 22) with ages range between (16 -76 years) complaining of shoulder joint pain, all patients underwent magnetic resonance imaging.

Study patient with shoulder pains both genders and all ages were included, and patient was undergoes to MRI scan.

3.1.2 Equipment:

3.1.2.1 MRI machine:

The MRI for study shoulder joint was taken by one MRI unit, Modern medical center, American, closed magnet, with field of 1.5 Tesla)

3.1.2.2 Shoulder coil

Shoulder array/small surface coil pair or array/small flexible coil, immobilization pads and straps and ear plugs.

3-2 Methods

3-2-1 Technique:

Patient was positioned on the MRI examination table lied supine with the arm resting comfortably by the side. the patient was slide across the table to bring the shoulder under examination as close as possible to the center of the bore. the shoulder was relaxed to remove any upward. The arm was examined is strapped to the patient, with the thumb up (neutral position) and padded so that the humerus was horizontal. the coil was placed to cover the humeral head and the anatomy superior and Z axis when it is placed over the humeral head. the FOV was centered on the middle of the glenohumeral head joint. Patient and coil immobilization is essential for a good result. the patient was instructed not move the hand during sequences.] The patient was positioned so that the longitudinal alignment light and the horizontal alignment light pass through the shoulder joint.

3-4: Protocol used

Axial T1-T2, Sagittal T2, CoronalT1 –T2+STIR, and an Axial T2* GRE,Axial T1 SE, Coronal T1FSE,Coronal PD and Sagittal T2 FSE

3.2.3: Who identify the type of pathology:

The image radiography diagnosed by qualified radiologist. The data were analyzed by using simple statistical graphs, mean, frequency, percentage

Chapter four

Result

Chapter four Results

Table 4 -1: Show the distribution of patient gender

items	Frequency	percentage
male	28	56%
female	22	44%
total	50	100%

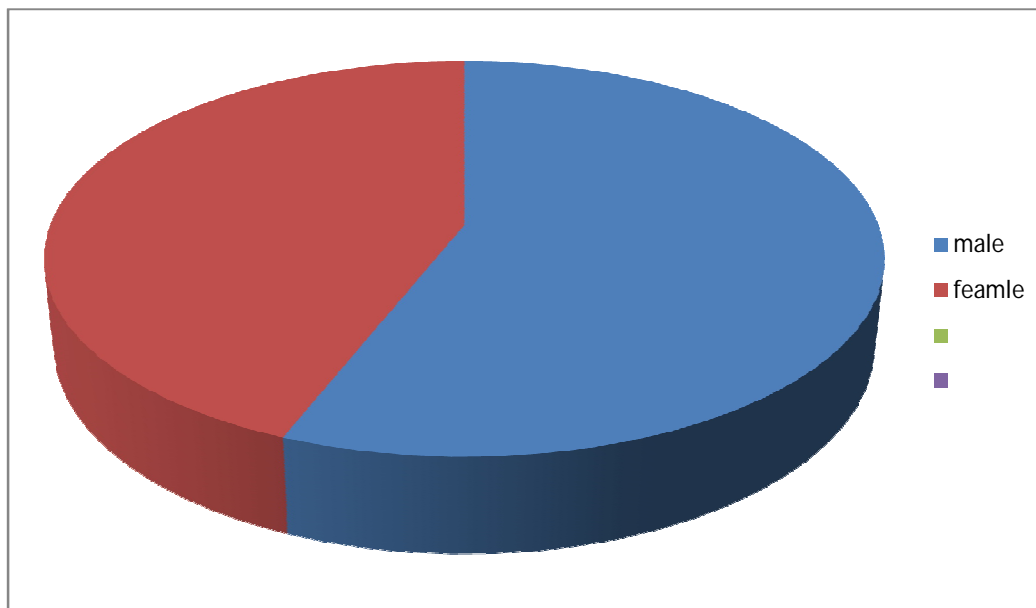


Figure 4 -1: Showed distribution of patient gender

Table 4-2: Show the patient's age class distribution

age	frequency	percentage
>25	3	6%
25-34	5	10%
35-44	7	14%
45-54	9	18%
55-64	14	28%
65-74	11	22%
<75	1	2%
total	50	100%

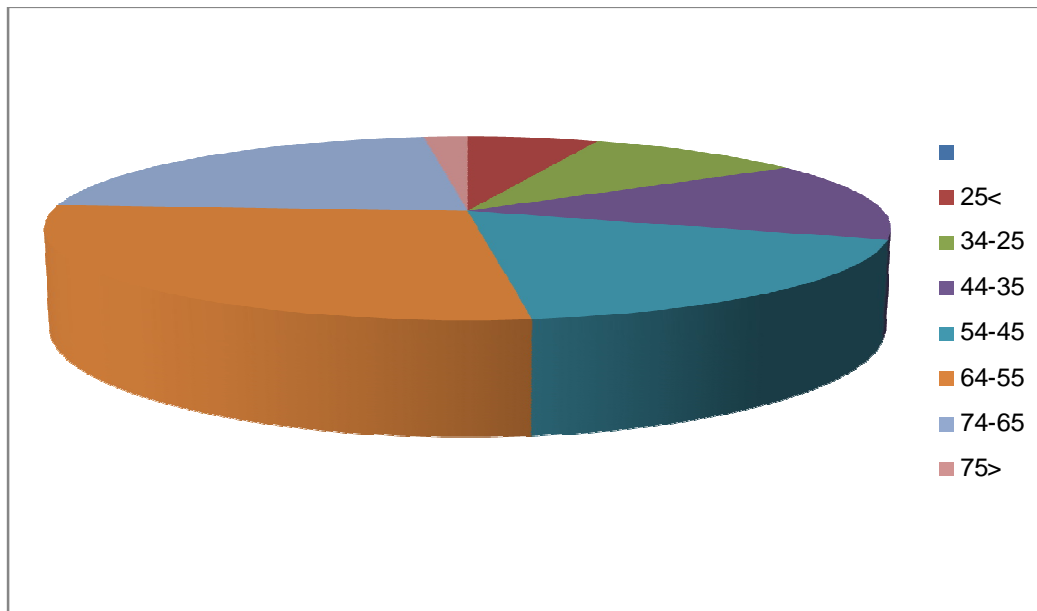


Figure 4-2: Showed the patient's age distribution

Table4-3: Show the patients weight distribution

weight	frequency	percentage
< 60	1	2%
60-79	18	36%
80-99	31	62%
total	50	100%

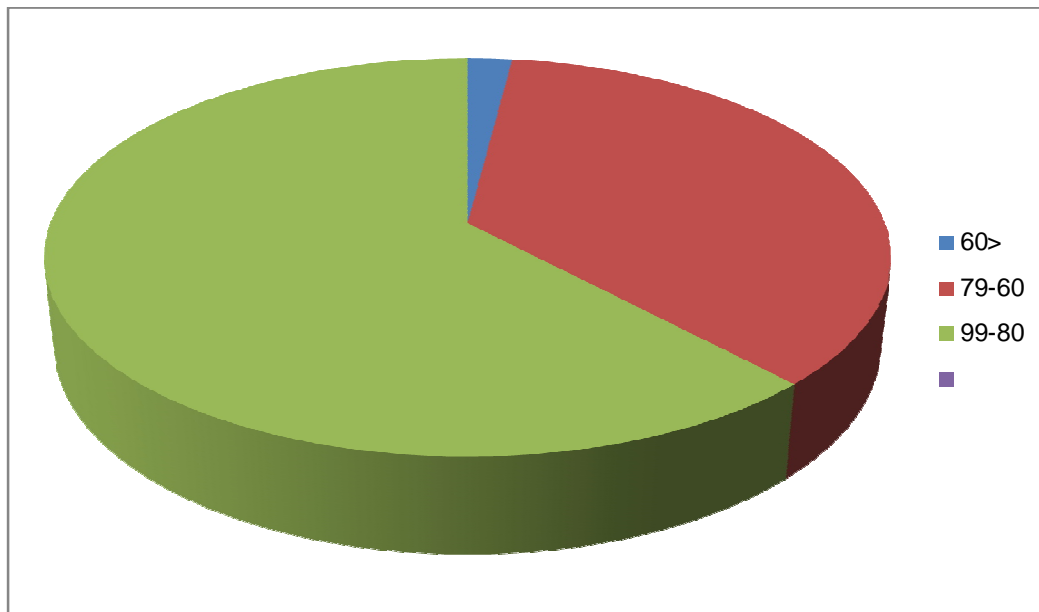


Figure 4-3: Showed the patients weight distribution

Table 4-4: The MRI finding of shoulder pain Relation to frequency

status	Frequency
Rotator cuff tear	35
tendonitis	3
osteoarthritis	1
degenerative	4
osteophyte	2
mass	1
Fracture	4

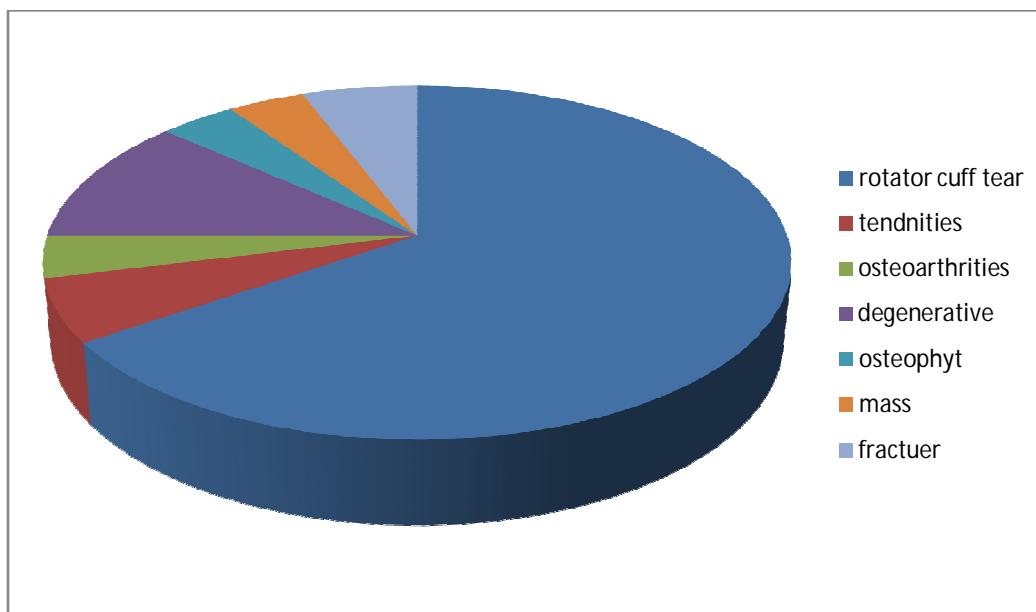
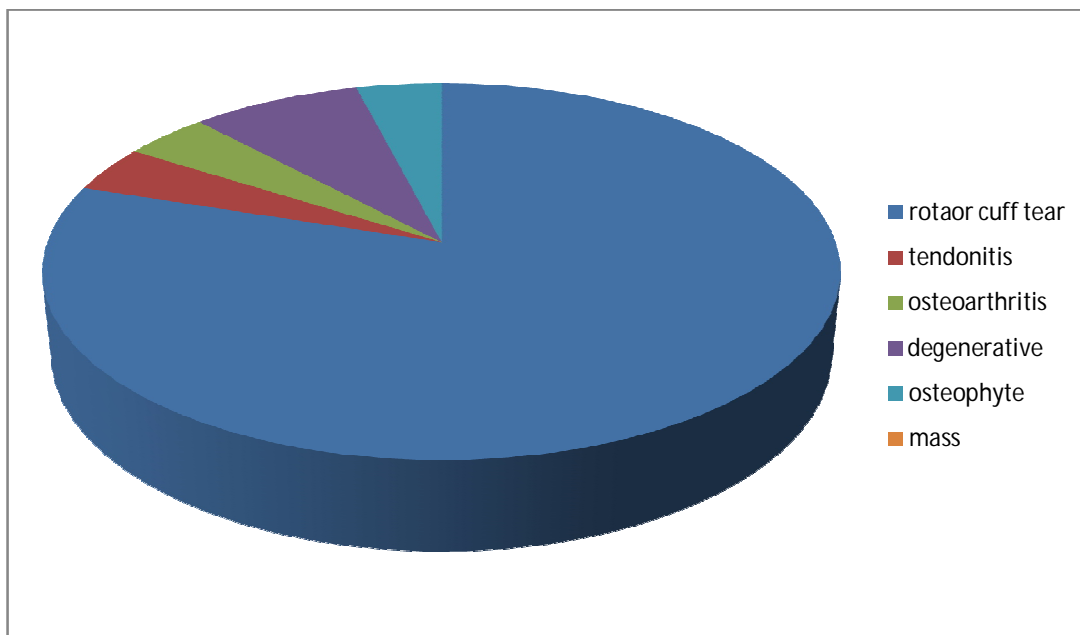


Figure 4-4: Show the most common cause of shoulder pain in Relation to frequency

Table 4-5: The Diagnosis * Gender Cross tabulation

diagnosis	male	female	total
Rotator cuff tear	20	15	35
tendonitis	1	2	3
osteoarthritis	1	0	1
degenerative	2	2	4
osteophyte	1	1	2
mass	0	1	1
fracture	3	1	4
Total	28	22	50



(4.5) Figure show the diagnosis* gender distribution

Table (4.6) :The Diagnosis * Age class Cross tabulation

diagnosis	>25.Yrs	25-34 Yrs.	35-44 Yrs.	45-54 yrs.	55-64 yrs.	65-74 yrs.	<75
Rotator cuff tear	1	3	5	7	11	8	0
tendonitis	1	0	0	1	1	0	0
osteoarthritis	0	0	0	0	0	1	0
degenerative	0	0	0	1	1	1	1
osteophyte	0	0	1	0	1	0	0
mass	0	1	0	0	0	0	0
fracture	1	1	1	0	0	1	0

Table (4.7)T:he Diagnosis*weight Class Cross tabulation

Diagnosis	➤ 60	60-79	80-99
Rotator cuff tear	0	12	23
tendonitis	0	2	1
osteoarthritis	0	0	1
degenerative	0	1	3
osteophyte	0	0	2
mass	0	1	0
facture	1	2	1

Table (4.8) The most anatomical part effected*Diagnosis Cross tabulation

DIAGNOSIS	Rotator cuff tear	tendonitis	osteoarthritis	degenerative	osteophyte	mass	fracture
Deep fascia muscle	0	0	0	0	0	0	0
Deltoid muscle	3	1	0	0	0	0	0
Subscapularis muscle	5	0	0	0	0	0	5
Supraspinatus muscle	32	0	0	0	0	0	5
Infraspinatus muscle	22	0	0	0	0	0	3
Teres minor muscle	3		0	0	0	0	1
Teres major muscle	1	0	0	0	0	0	1
Biceps muscle	5	4	0	0	0	1	3

Pectoralis major and minor muscle	2	1	0	0	0	0
Biceps tendon	5	4	0	0	0	1
Subscapularis tendon	5	1	0	0	0	0
Supraspinatus tendons	32	0	0	0	0	0
Infraspinatus tendon	22	0	0	0	0	0
Teres minor tendon	3	0	0	0	0	0
Teres major tendons	1	0	0	0	0	0
Pectoralis tendons	2	1	0	0	0	0
Acromioclavicular ligament	2	0	0	0	0	1
Coracoacromial	1	0	0	0	0	0

ligament						
Glenohumeral ligament	12	0	0	0	0	0
Tansvershumaral ligament	3	0	0	0	0	0
Conoid ligament	2	0	0	0	0	0
Superiortransverse scapular ligament	5	0	0	0	0	0
humerus	4	0	0	2	0	1
scapula	0	0	0	1	0	0
clavicle	0	0	0	1	0	0
Glenohumeral joint	5	0	1	4	2	1

*more than one anatomical part can affected by more than one disease.

Chapter five

Discussion, conclusion, and recommendations

Chapter five

Discussion, conclusion, and recommendations

5.1. Discussion:

Magnetic resonance imaging is an effective modality for detecting shoulder pathology. The study studies the shoulder pain causes from the different aspects to obtain useful results.

The study found that the heavy weight is the maximum effected patient, were the weight between(80-99kg) that represent(62%) of samples and the minimum affected weight were (<60kg) that represent (2%)of sample. That mean the possibility of the occurrence of the shoulder pain increase with weight .this shown in table (4-3) and (4-7) figure (4-3) .this agree with (Faisal , 2012).

The result found that the possibility of the occurrence of the shoulder pain increase with age above 50 year ,were the age class (55-64 years)14 patient represent (28%)and (65-74 year)(22%)this shown in figure(4-2) ,table(4-2) and (4-6).

Male were more effect patient 28 Pt(56%) more than female 22 Pt(44%)shown in figure(4-1)and(4-5),table (4-1)and(4-5).

The main finding of this study with cause shoulder pain is rotator cuff tear this similar result of (Rajiv, 2008) that rotator cuff tear was common causes shown in table (4-4)and(4-8) figure (4-4).

The most common anatomical part effected in rotator cuff tear was supraspinatus muscle (32 Of sample have complete muscle tear)this shown in table(4-8)

The coronal T1 FSE the best protocol to evaluate rotator cuff tear and also additional protocol seen rotator cuff tear coronal PD.

5. 2. Conclusion:

Rotator cuff tear is common cause of shoulder pain in aged people above 50 year.

Other risk factors that contributing in shoulder pain are patient weight, age . MRI is a method of choice in assessments of shoulder joint pain due to it is high quality diagnostic ability and best demonstrate of soft tissue ,muscle ,tendons and ligament of shoulder joint .

5.3 Recommendations:

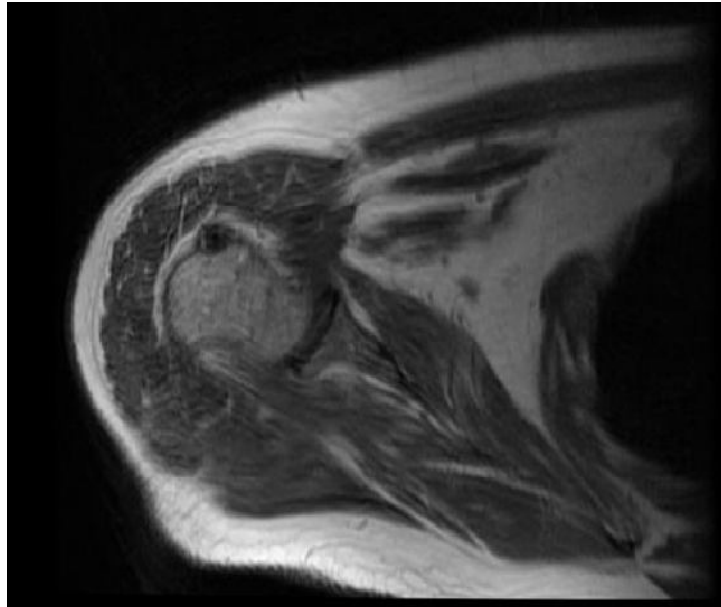
- . Magnetic resonance imaging examination for persistent shoulder pain is recommended to be routine examination.
- . MRI machine and its accessories such as flexible coil should be available in radiology department
- . For further study is to evaluate the MRI protocol in the all evaluation of shoulder joint pain compared with US.

References:

- Arther C.Guyton, 1991.8th edition, Textbook of Mechanical physiology,W.B.Saundeers company.
- Catherine Westbrook, 1999, Hand book of MRI Technique, second edition,Blackweel science.
- M.Y.Sukkar, H.A EI-Munshid, M.S.M.Ardawi,2000. Concise human physiology, 2th edition, Blackwell science.
- Richard Snell, 1992.Clinical anatomy for medical students. 4th edition, Little brown company, Boston, Toronto.
- William F.Ganong, 2003. Review of Medical physiology, 21th edition, large Medical Book, IMC Grow hill, medical publishing Division.
- [www.physioroom.com /injuries/shoulder](http://www.physioroom.com/injuries/shoulder).
- www.ejbis.org/cgi. The journal of bone and surgery. American .2006.88:64-70.magnetic resonance imaging of the shoulder.
- www.google.com. images Anatomy of shoulder.
- Mark A .Brown, Richerd C.semenka 2o11. 4th edition, MRI Basic principle and application.
- Michael Mckinely,Valerie Laughlin 2009 6th edition, human anatomy.
- www.sport orth.co.uk.com

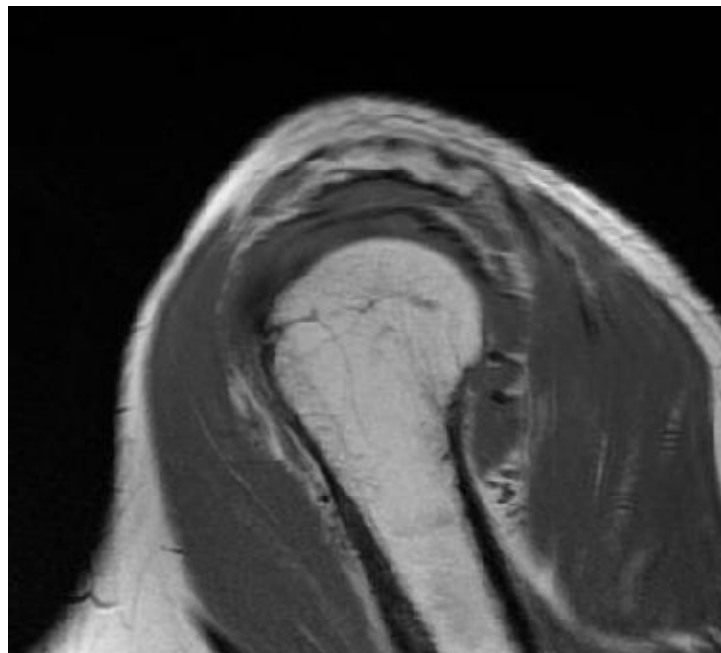
Appendices

(A)-IMAGES



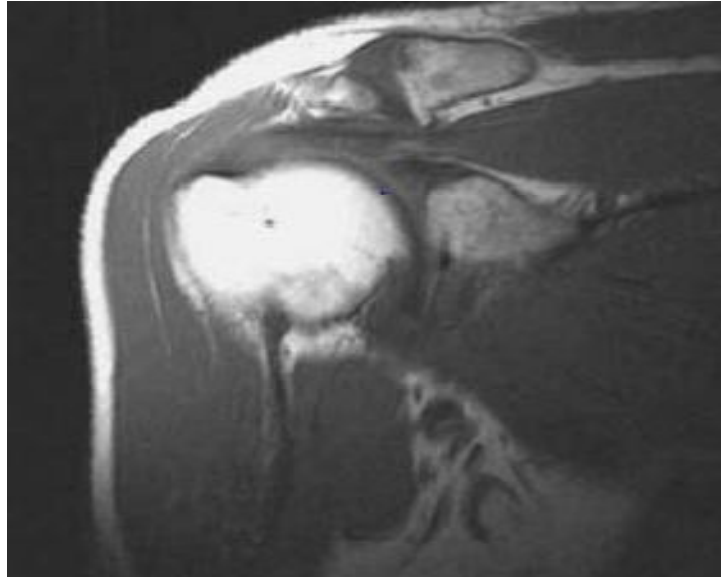
Axial MRI T1 SE female patient 64 years old show rotator cuff tear

Image-1



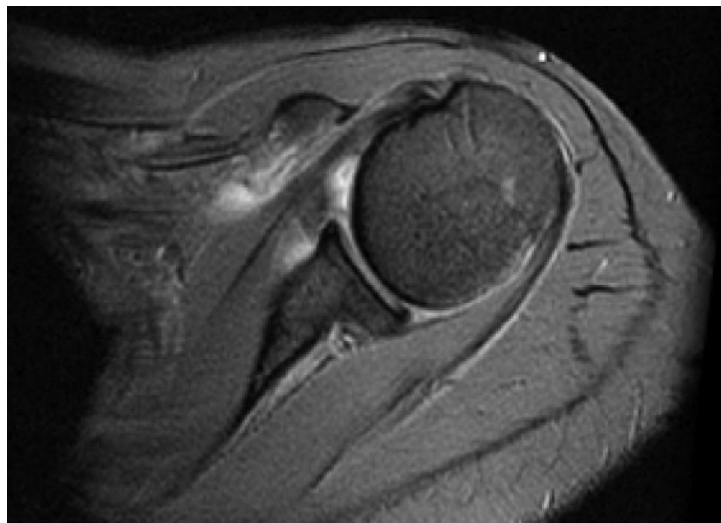
Sagittal T1 SE MRI male patient 52 years old show Osteoarthritis

Image -2



Coronal T1 FSE MRI male patient 64 years old show Tendonitis

Image -3:



Axial T1 SE MRI male patient 66 years old show osteophytosis

Image -4:

(B-)data collection sheet:

Pt age	Pt gender	Pt weight	MRI finding	The most common anatomical part effected