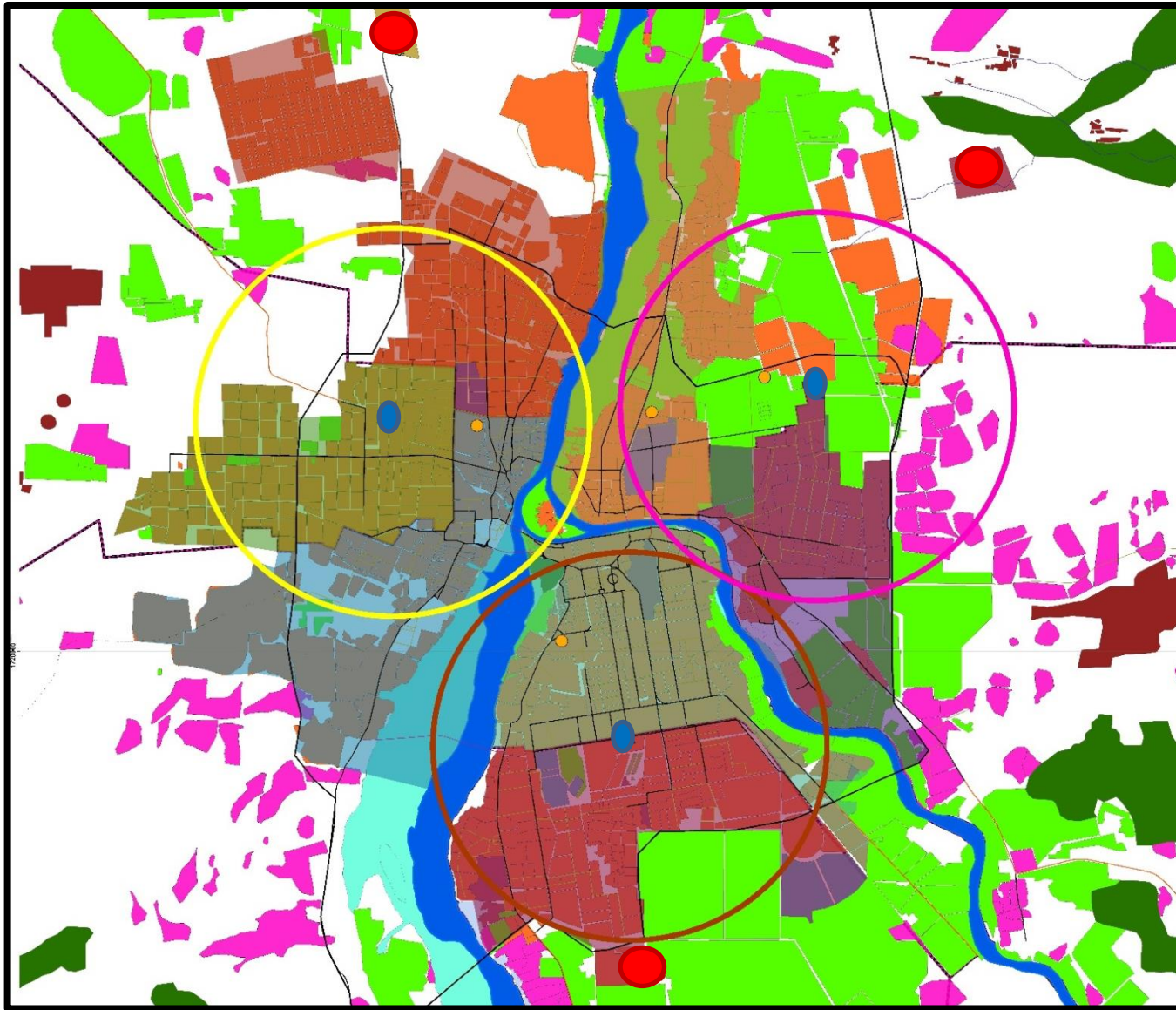


Map (A-1): Digital Elevation Model in Khartoum State[Google earth]

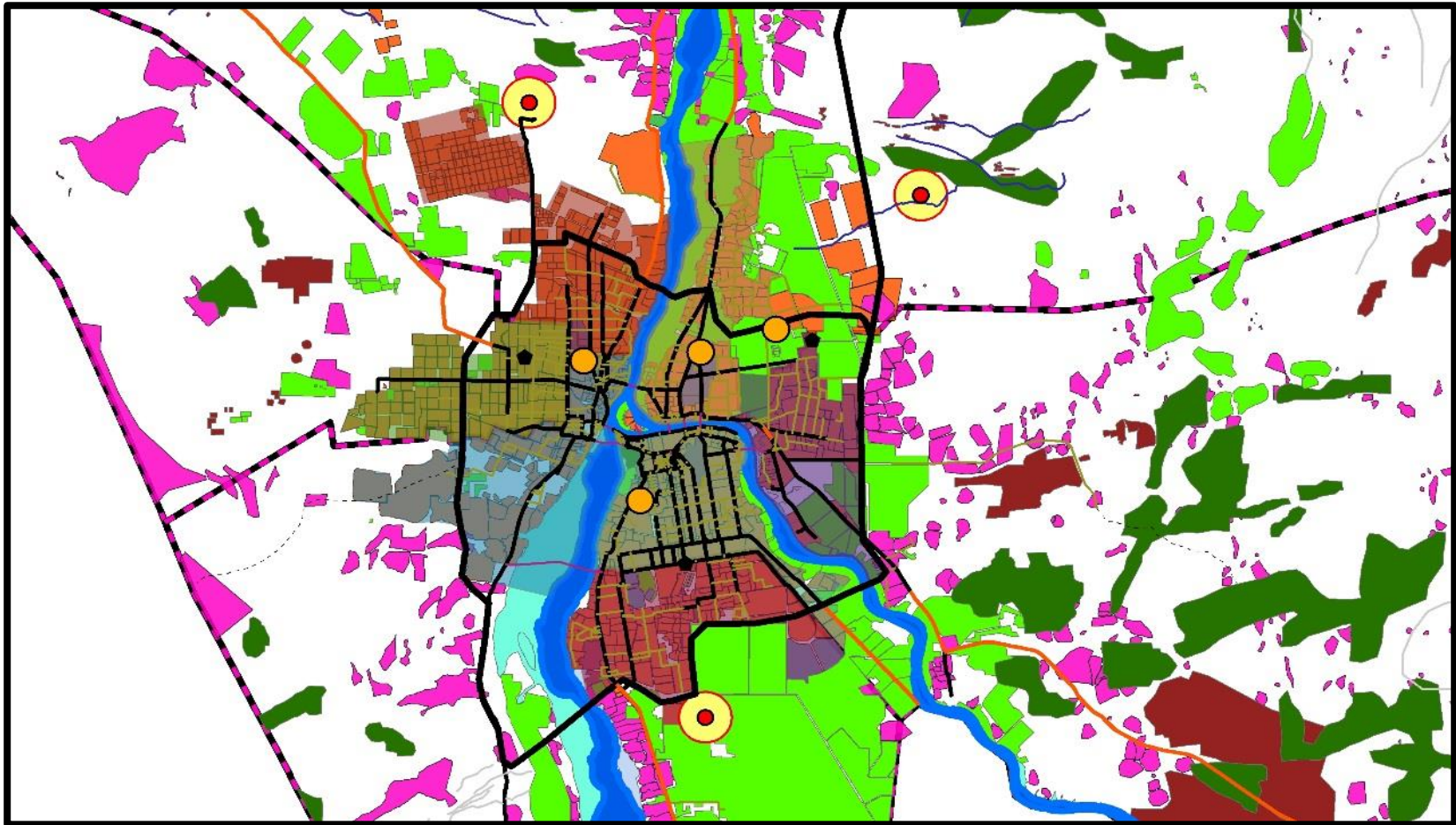
(A-1)



● Landfill ● Urban Center

map (A-2): Existing Landfill with Distance from Urban Center (10 km.)

(A-2)

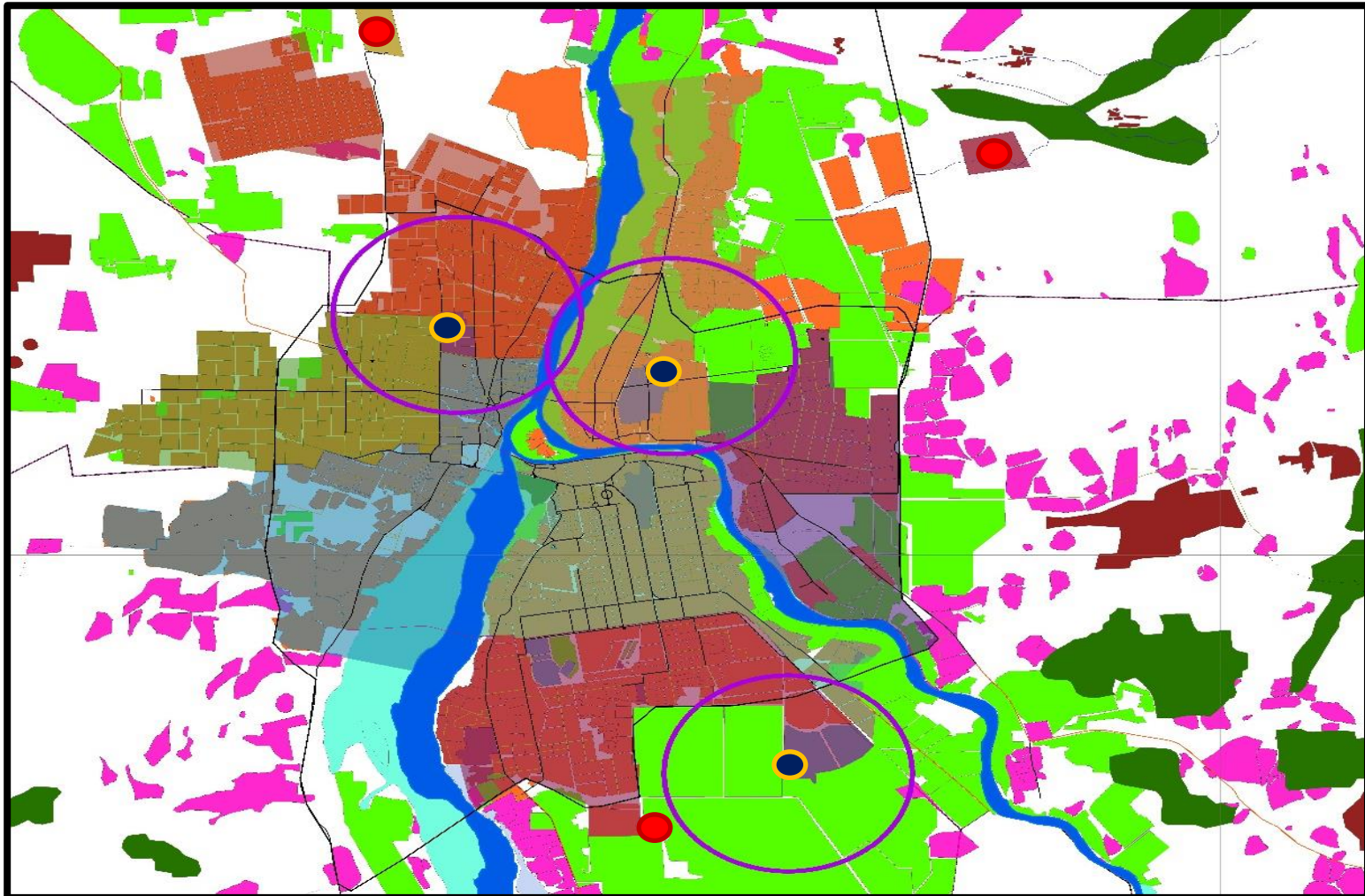


 Landfill

 Buffer 2 km.

Map (A-3): Existing Landfill with Distance from Villages (2 km.)

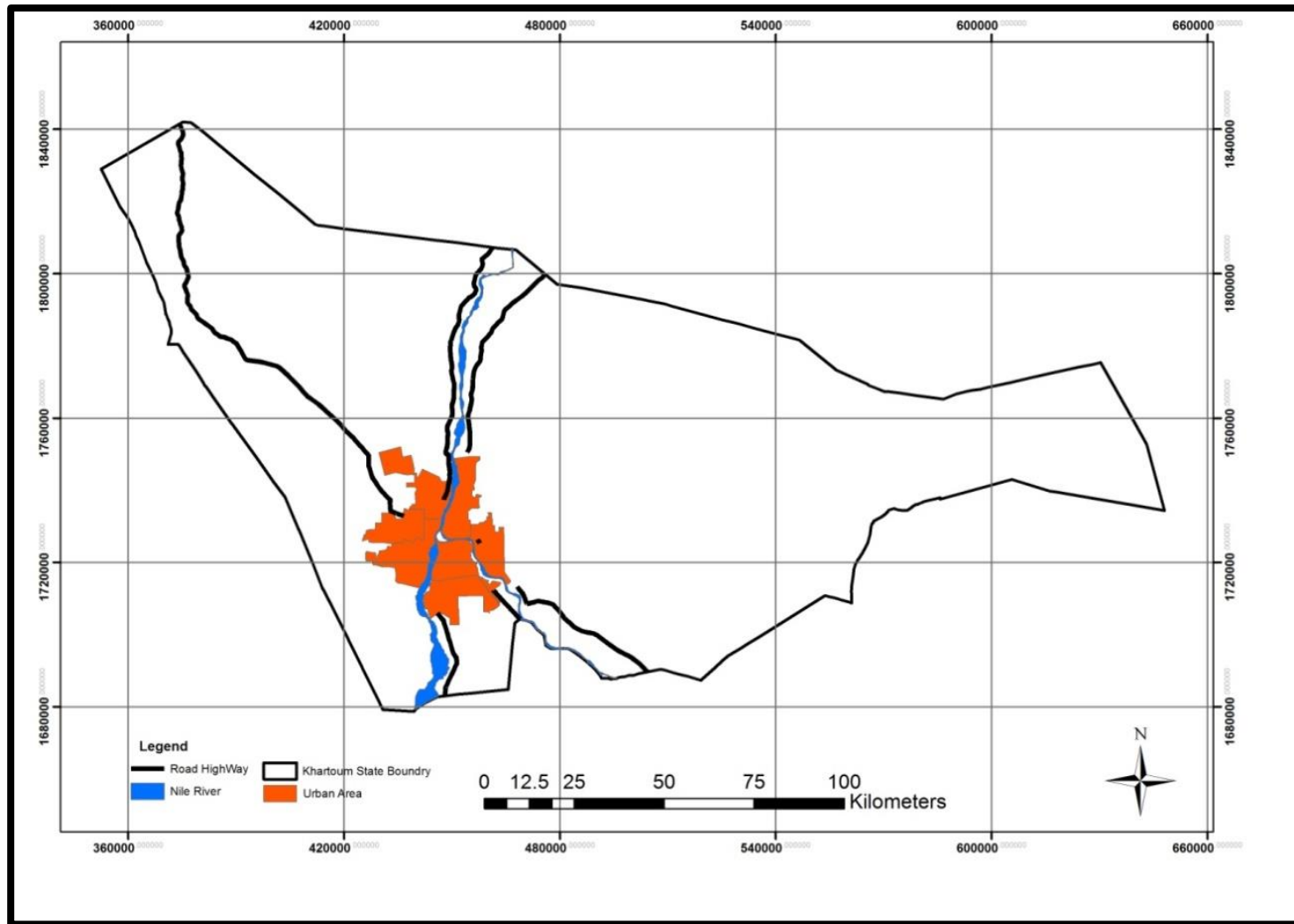
(A-3)



● Landfill ● Industrial ○ Buffer 6 km.

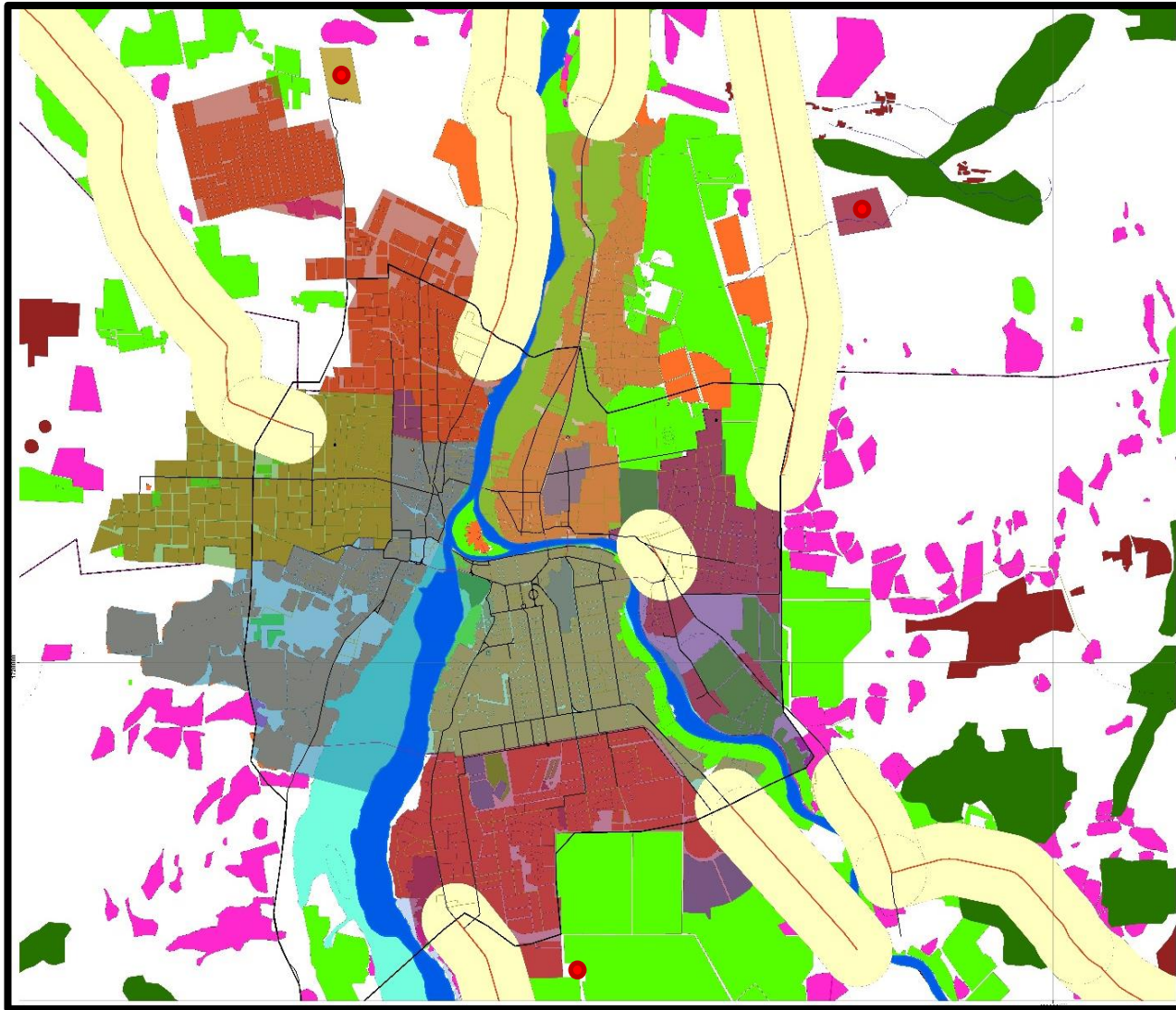
Map (A-4): Existing Landfill with Distance from Industrial (250m)

(A-4)



Map (A-5): High way Roads in Khartoum State

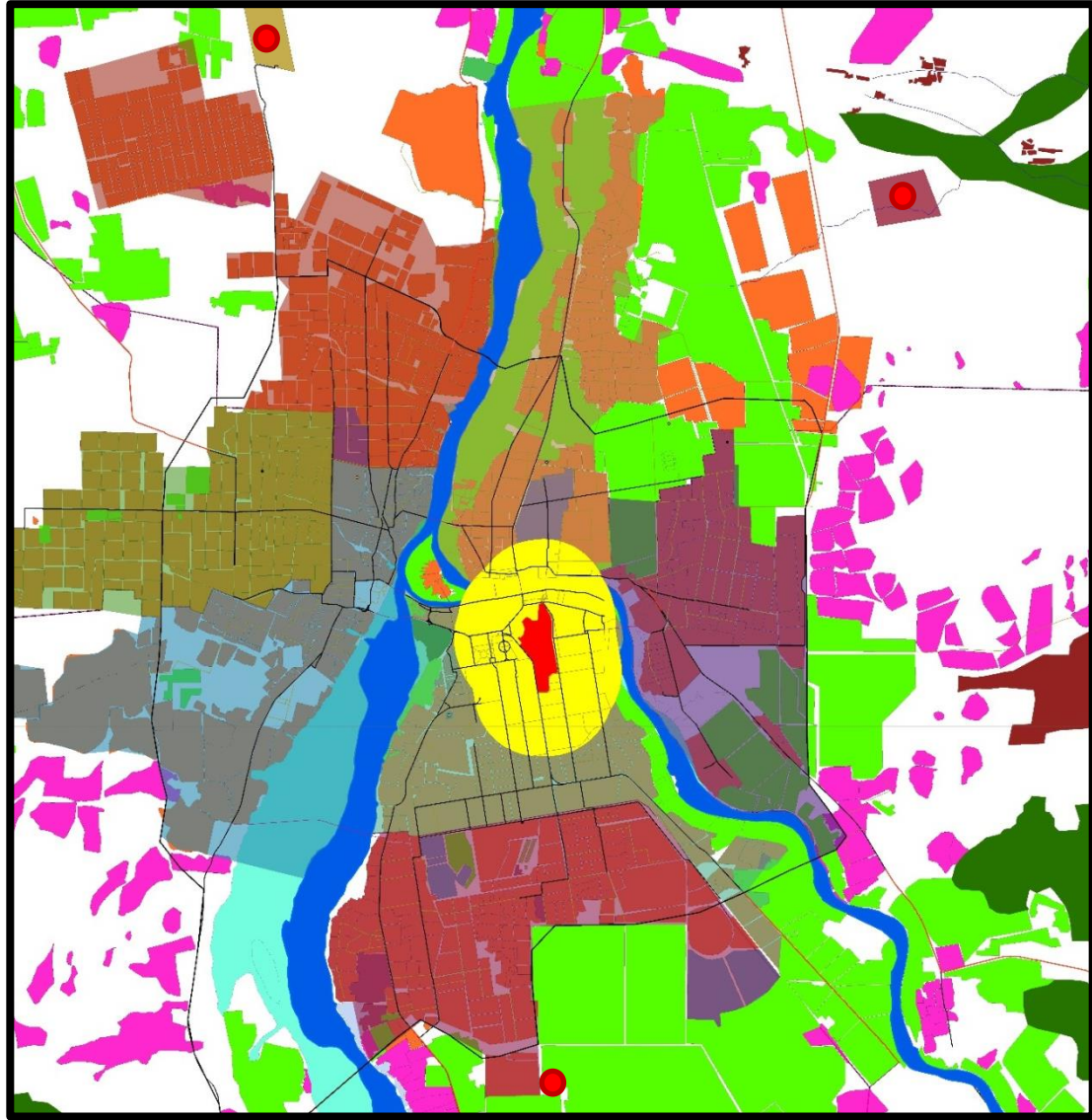
(A-5)



● Landfill Buffer Highway Roads

Map (A-6): Existing Landfill with Distance from Highway Roads

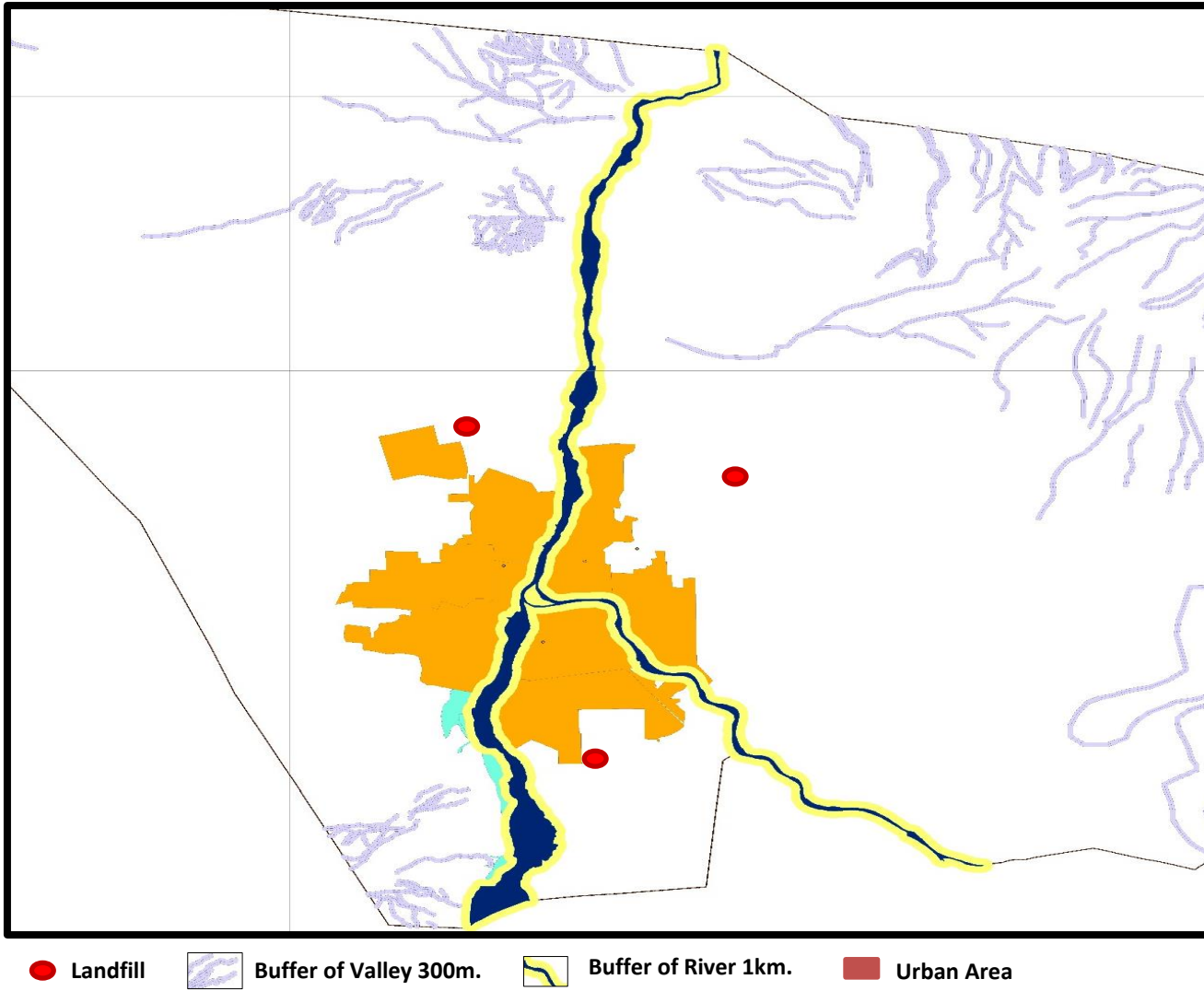
(A-6)



● Landfill ● Buffer 3km from

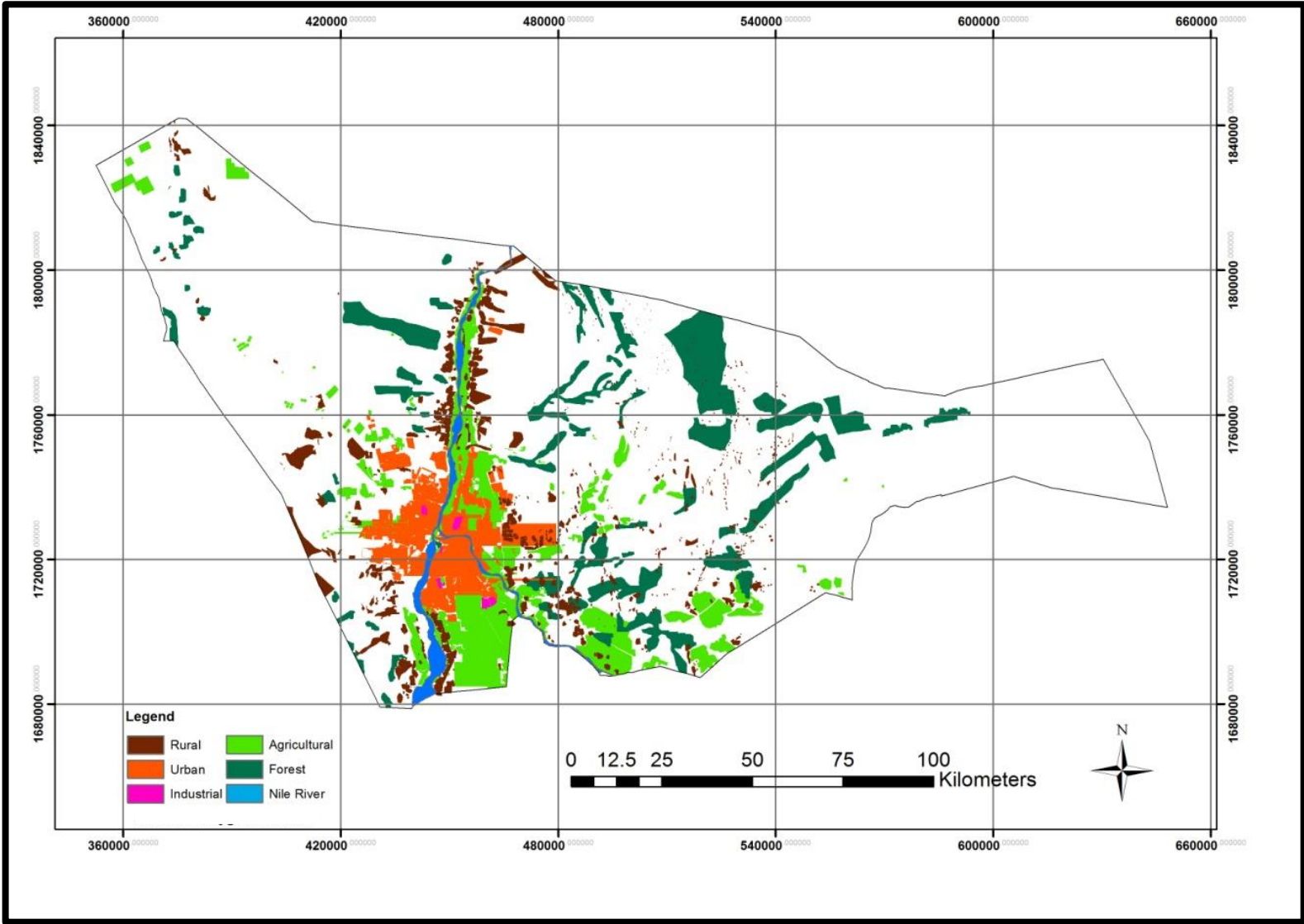
Map (A-7): Existing Landfill with Distance from Airport

(A-7)



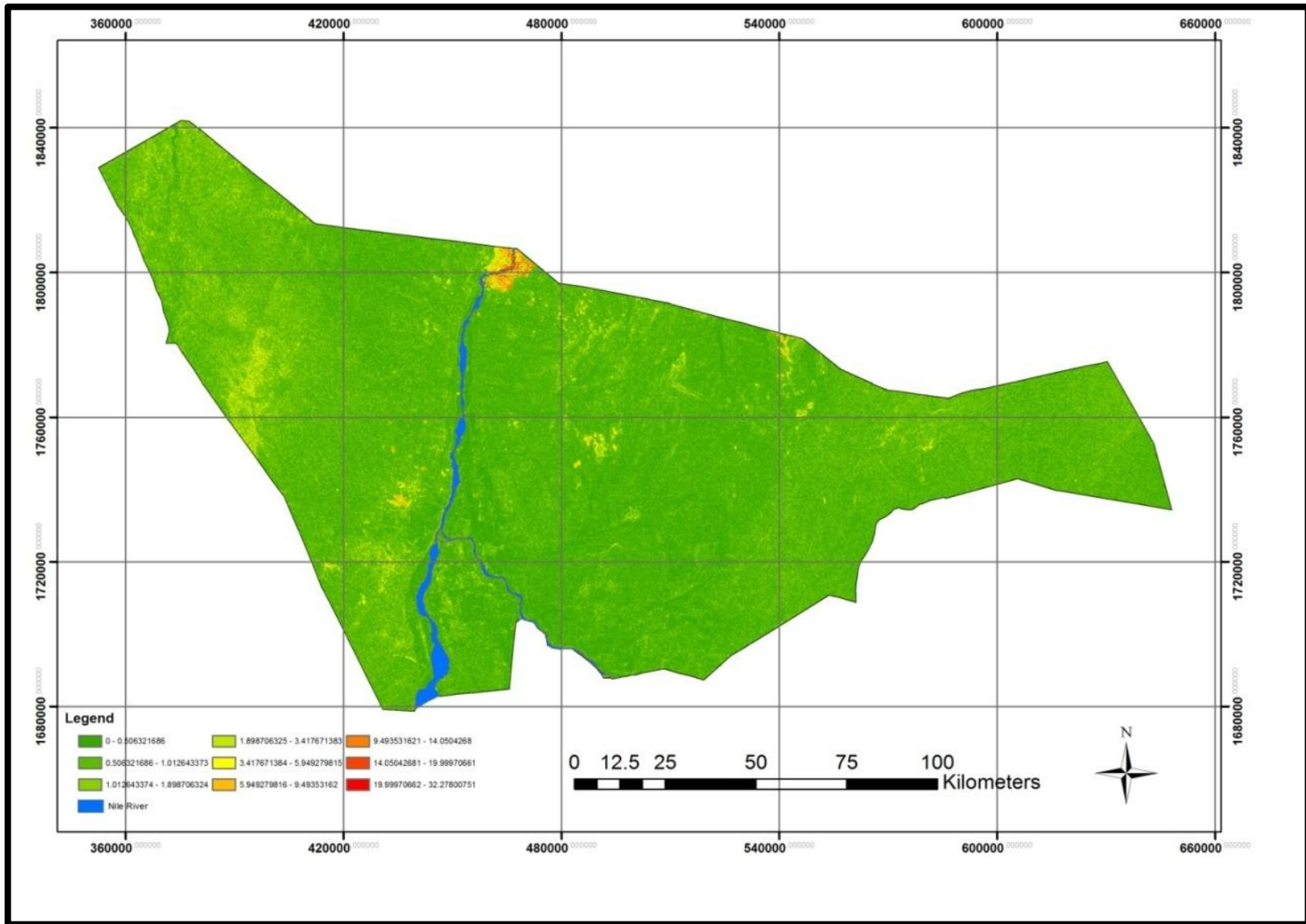
Map (A-8): Existing Landfill with Surface water and Valley

(A-8)



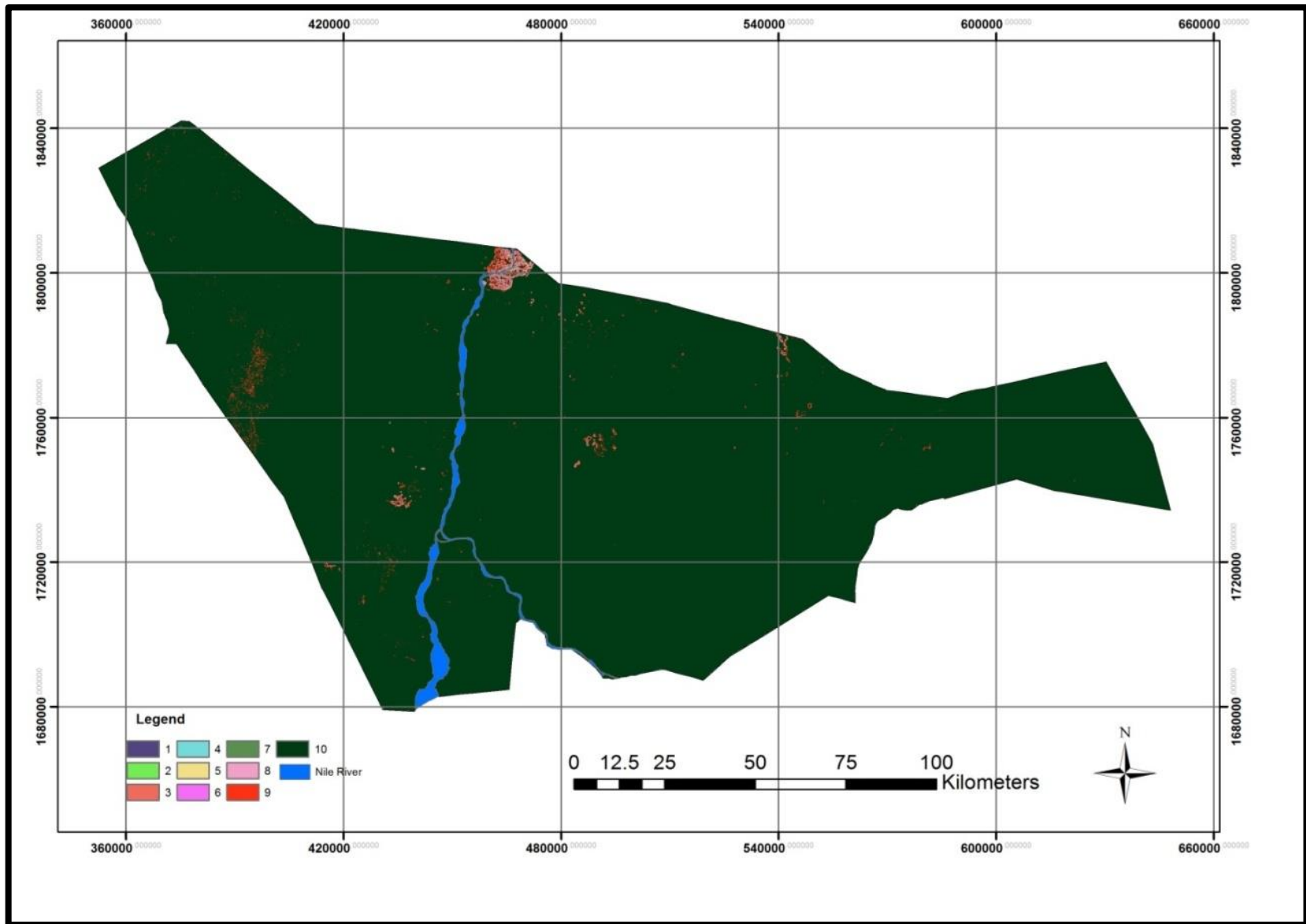
Map (A-9): Map for Landuse in Khartoum State

(A-9)



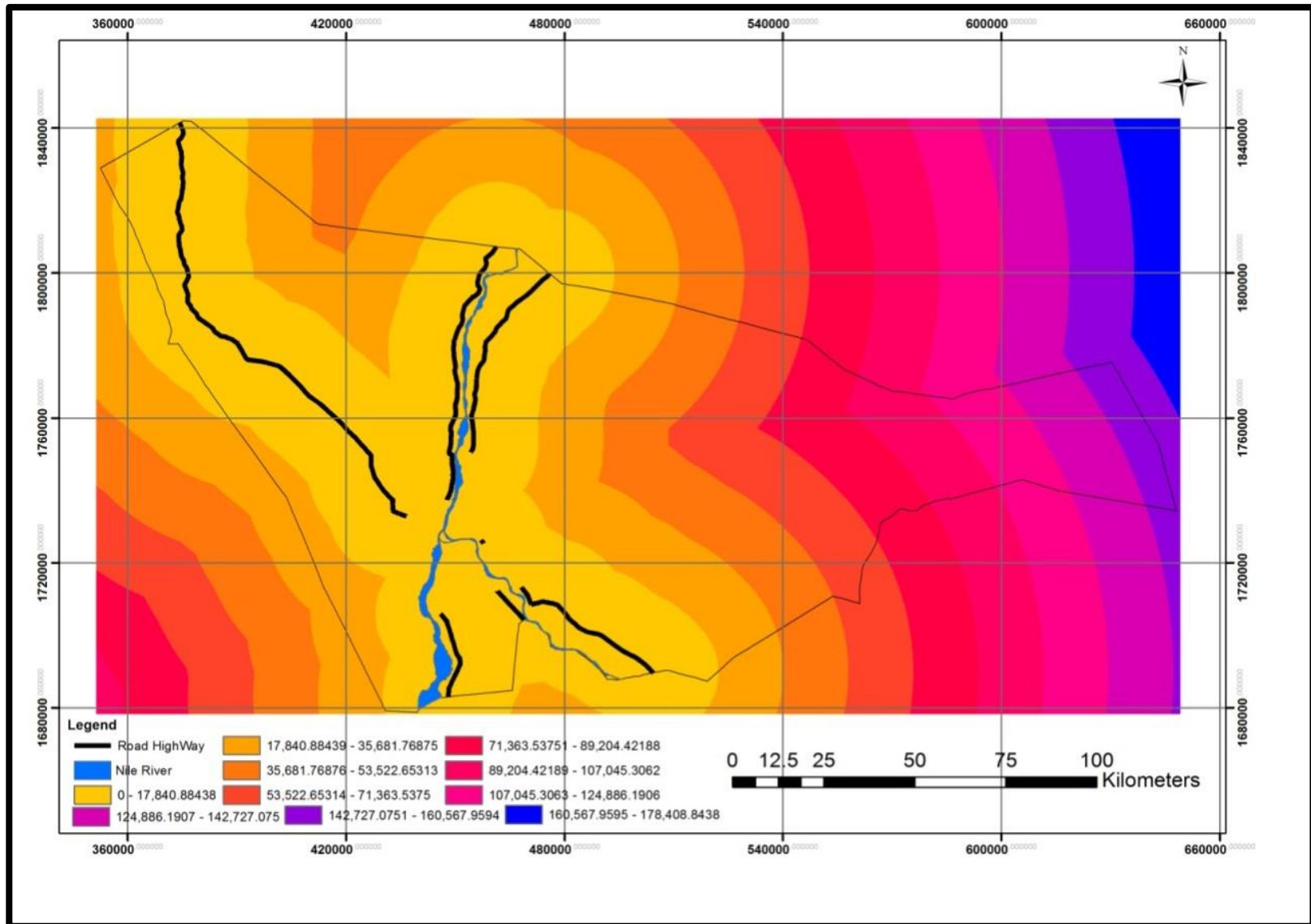
Map (A-10): DEM in Khartoum State after derivation

(A-10)



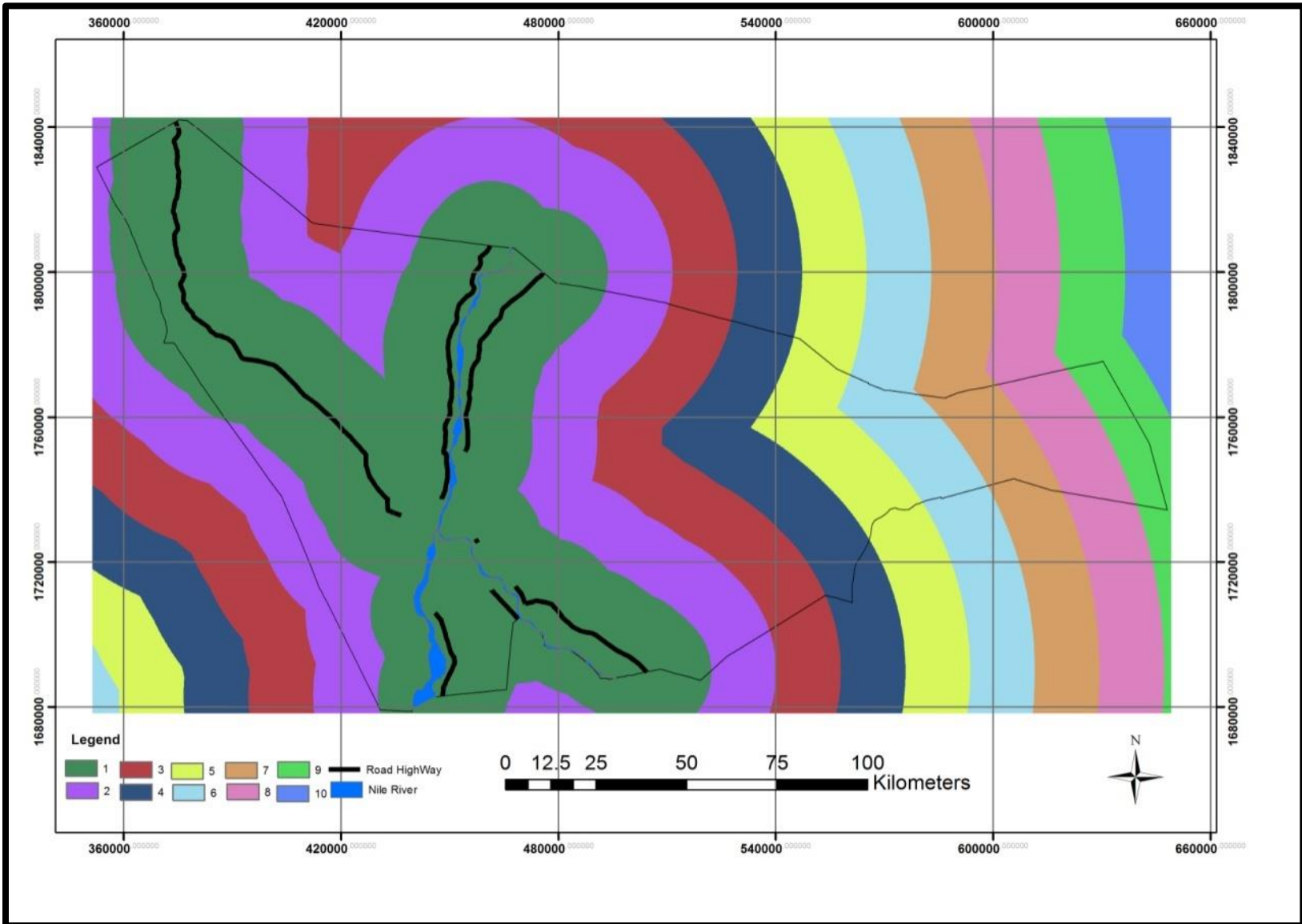
map (A-11): DEM in Khartoum State after re-classified

(A-11)



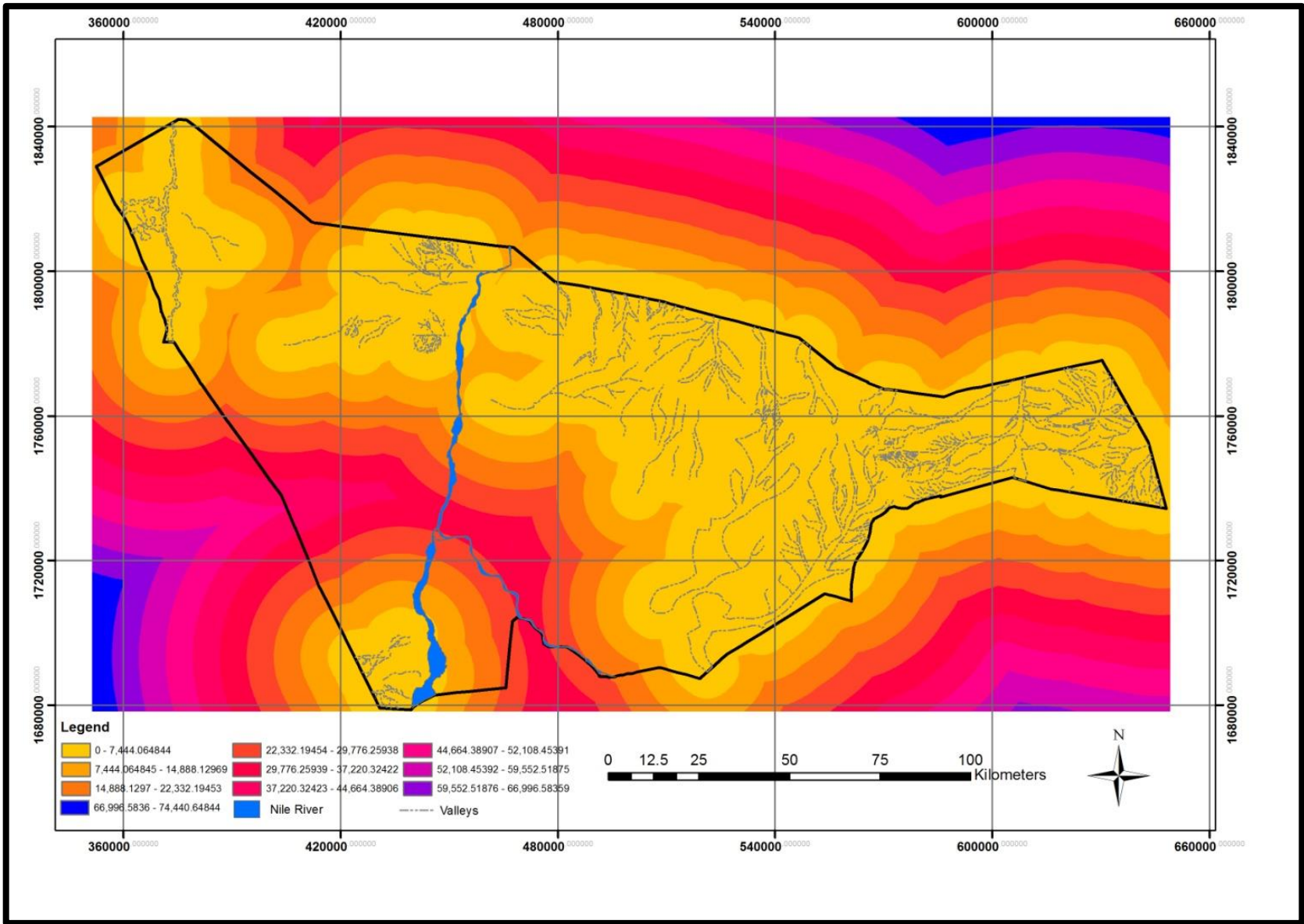
Map (A-12): Highway Roads in Khartoum State after derivation

(A-12)



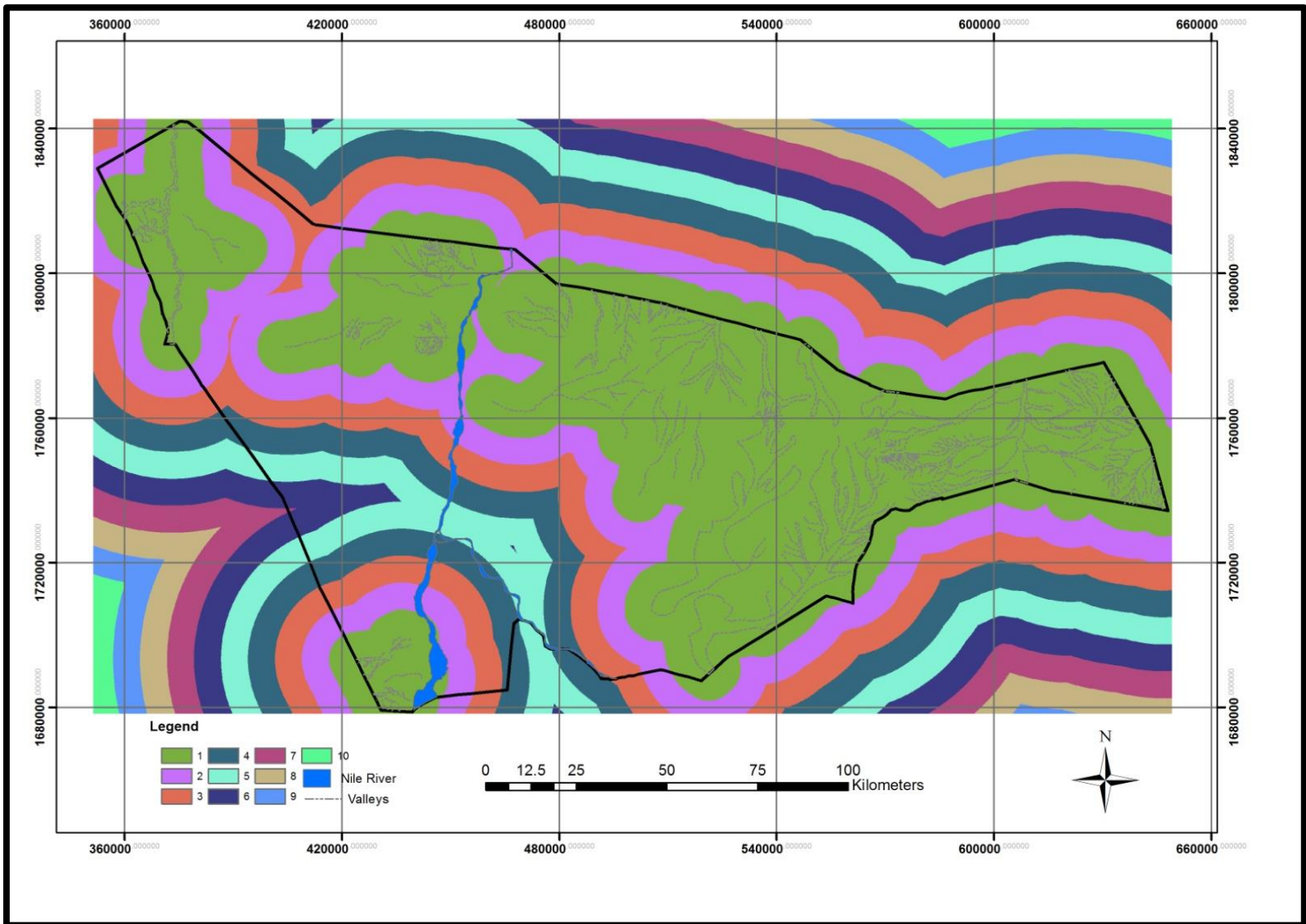
Map (A-13): High way Roads in Khartoum State after re-classified

(A-13)



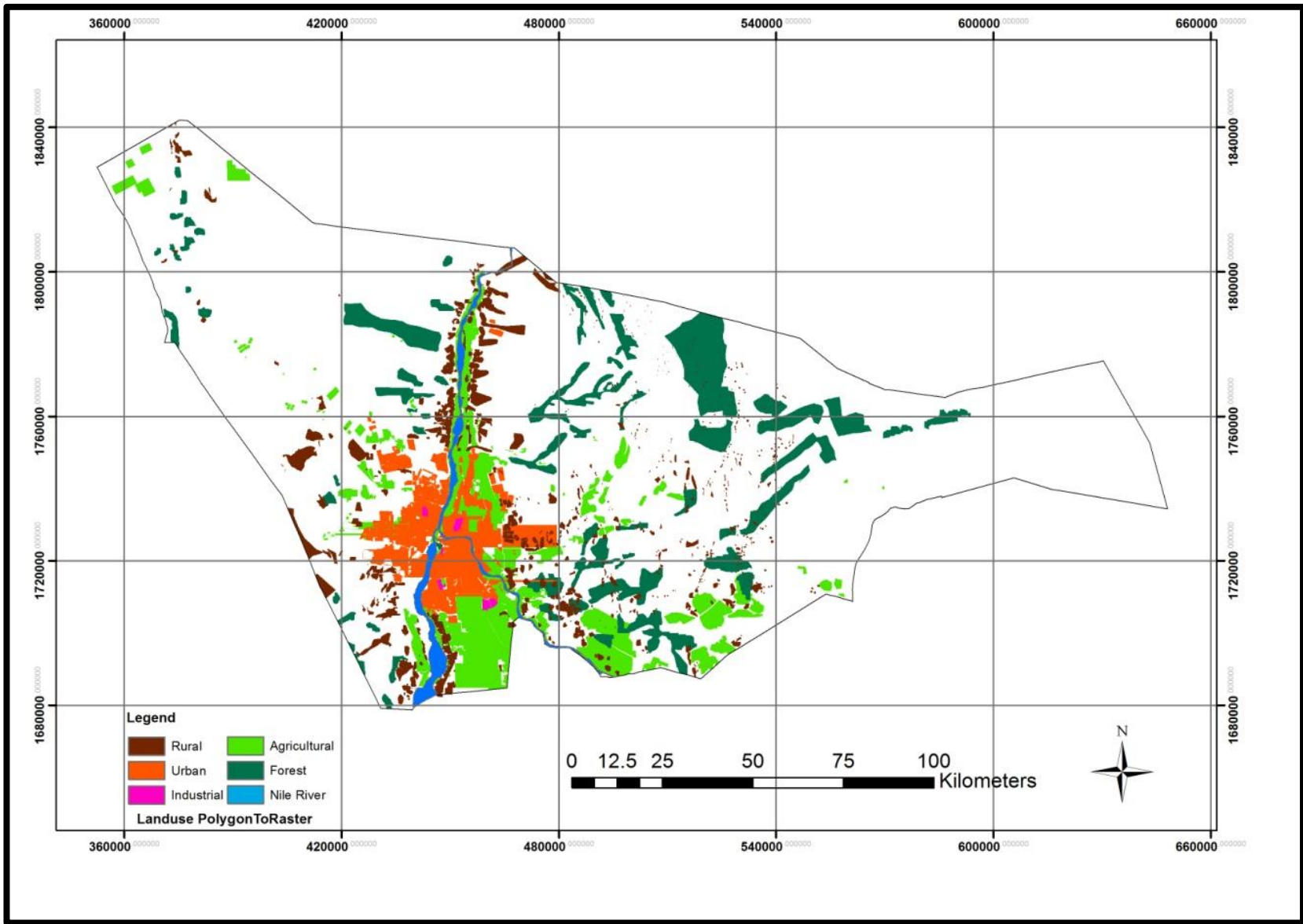
Map (A-14): Map for Valleys in Khartoum State after derivation

(A-14)



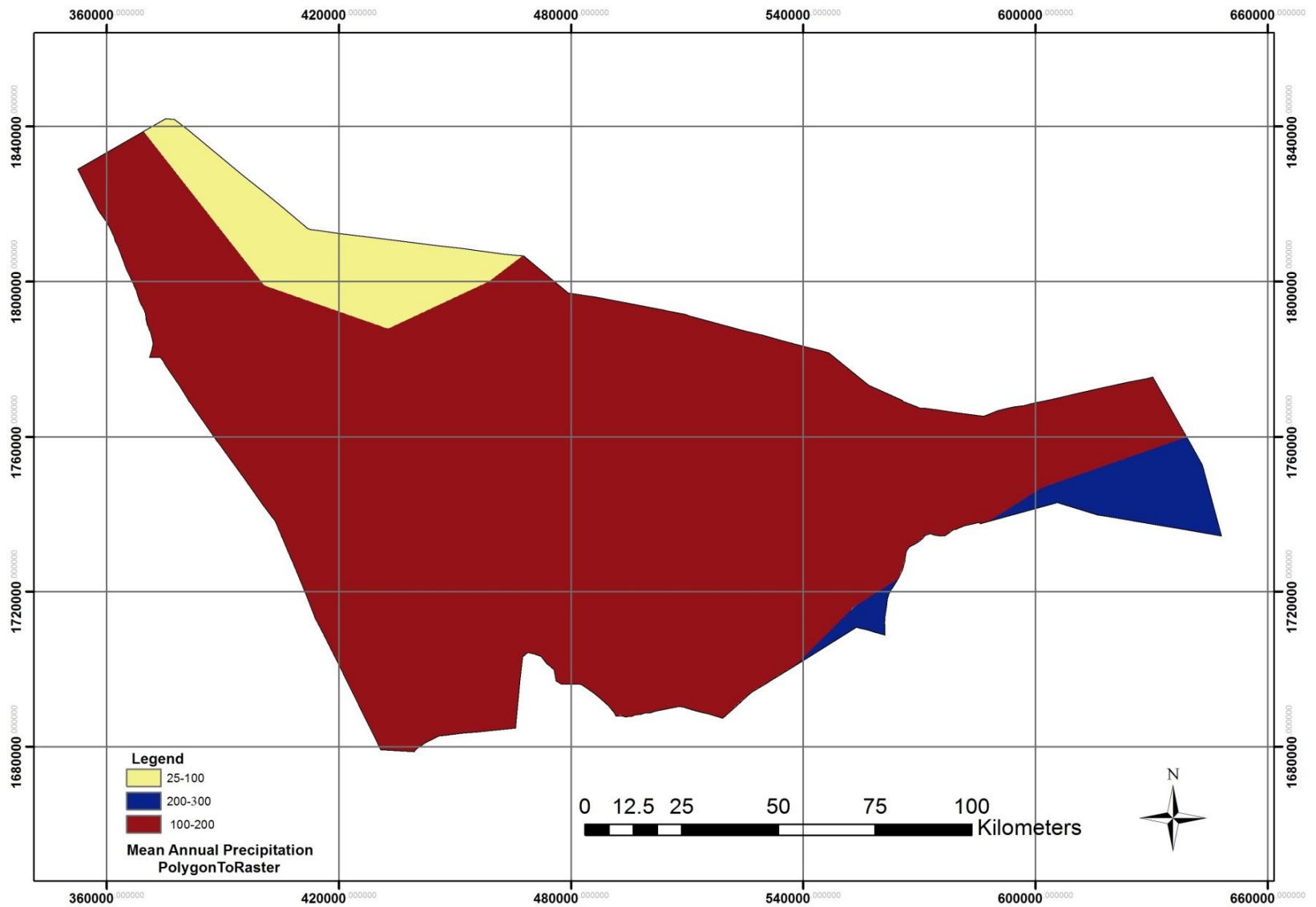
Map (A-15): Map for Valleys in Khartoum State after re-classified

(A-15)



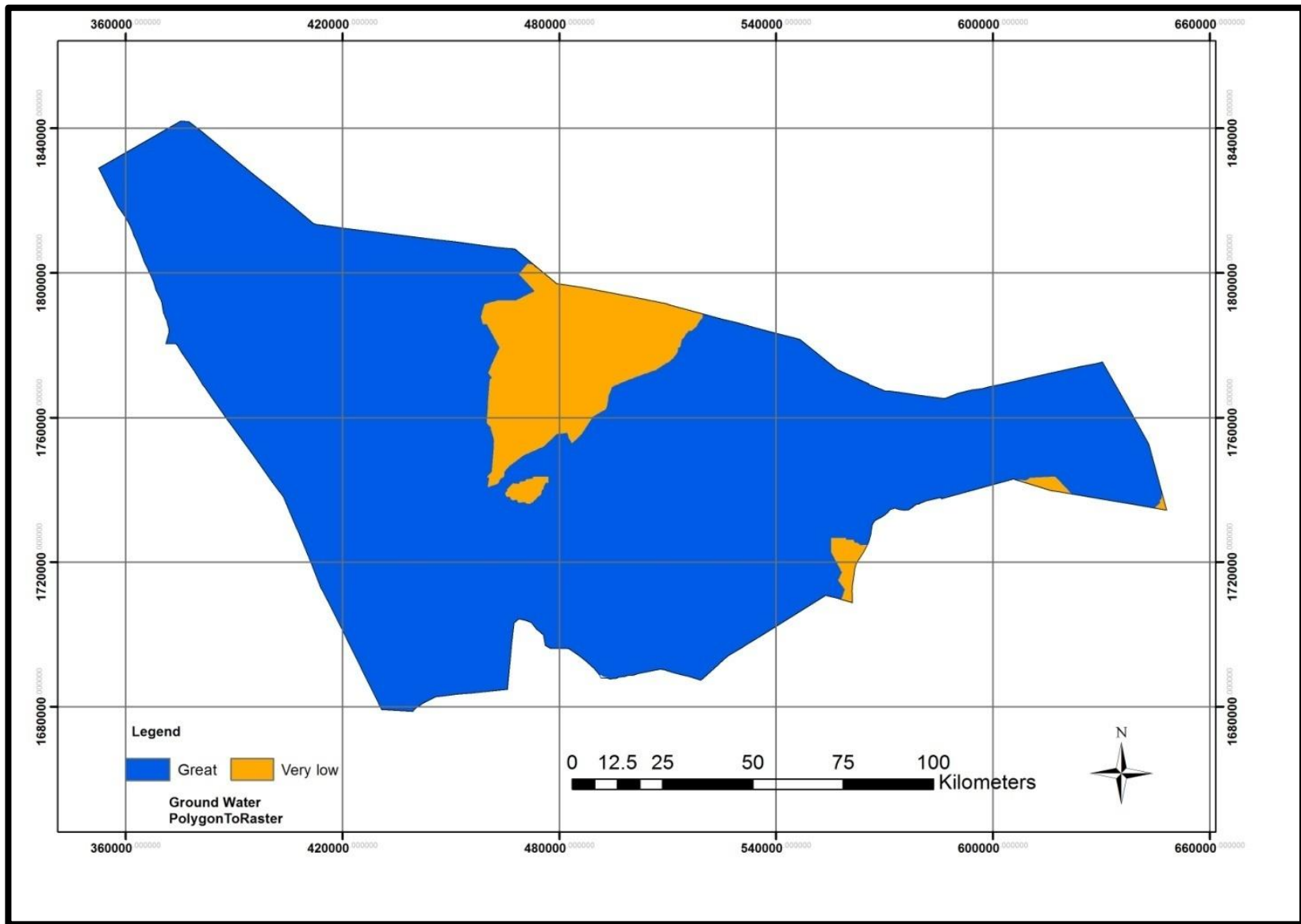
Map (A-16): Landuse in Khartoum State after re-classified

(A-16)



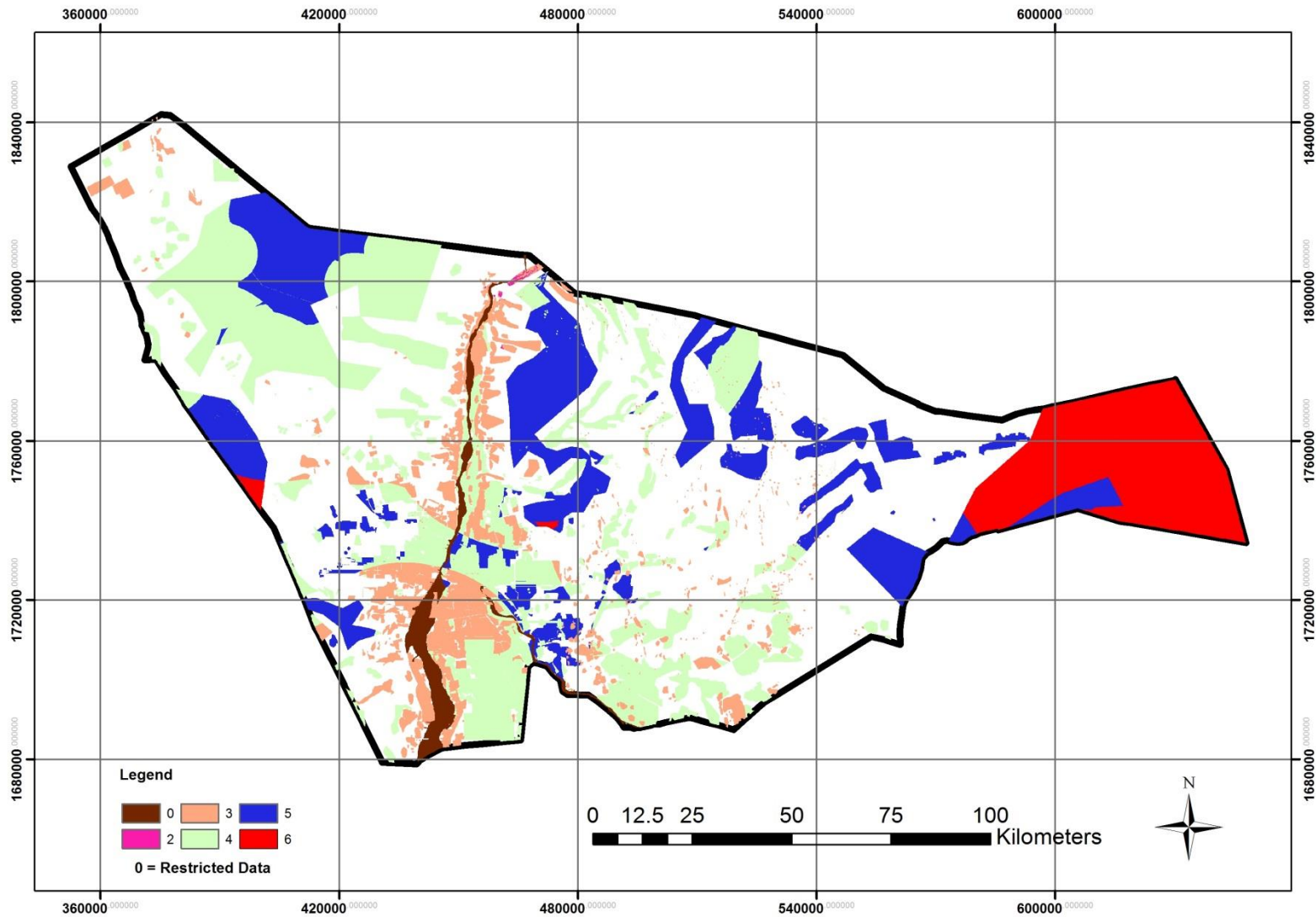
Map (A-17): Mean Annual Precipitation in Khartoum State after re-classified

(A-17)



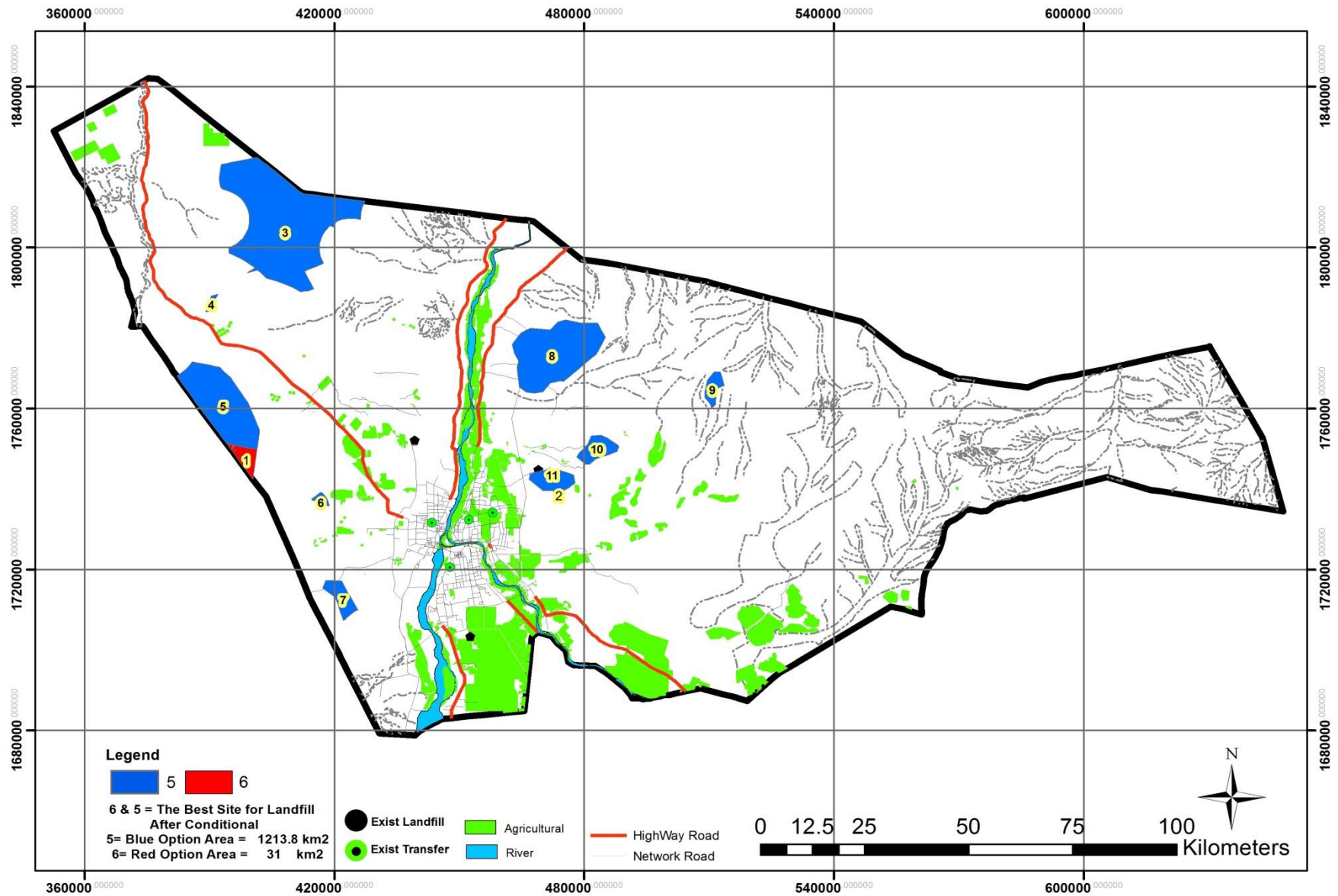
Map (A-18): Ground Water in Khartoum State after re-classified

(A-18)



Map (A-19): Suitable sites for landfill in Khartoum State before applying buffering

(A-19)



Map (A-20): Suitable sites for landfill in Khartoum State after applying buffering and criteria



(A-21)