



Sudan University of Science and Technology



College of Graduate Studies

Determination of normal lumber spinal canal dimension using magnetic resonance imaging

قياس معدل البعد الطبيعي للفناة الشوكية في الفقرات القطنية للسودانيين باستخدام
التصوير بالرنين المغناطيسي

*A Thesis Submitted for Partial Fulfillment of the Requirement of
M.Sc Degree in Diagnostic Radiologic Technology*

By:-

Raheeq Faisal Khalid Albashier

Supervisor:-

Dr .Asma Ibrahim Ahmed Elamin

2017

الآية

قَالَ تَعَالَى:

﴿وَأَصْبِرْ لِحُكْمِ رَبِّكَ فَإِنَّكَ بِأَعْيُنِنَا وَسَبِّحْ بِحَمْدِ رَبِّكَ حِينَ تَقُومُ ﴿٤٨﴾﴾

صدق الله العظيم

سورة الطور - الآية 48



Dedication

TO

My teachers

For their advice and support

My parents

For their love and unconditional support

My friends and colleagues

For their Encouragement

Acknowledgment

Firstly I thanks Allah for his help to finish this work successfully. I would like to express my deepest gratitude thanks to my supervisor Dr.Asmaa for her guidance . I would like to thank the MRI department staff of Medical Modern Center for their cooperation in completing practical part of this study . I would like to thank Dr. Hussain ahmed hasan who help me to collecting data . I also need to thank for all those who provided me completing this work.

List of Contents

الآية.....	I
Dedication	II
Acknowledgment	III
List of Contents	IV
List of Tables	VII
List of Figures	VIII
List of Abbreviation	IX
Abstract Arabic	XI

Chapter One: Introduction

1.1 Introduction	2
1.2 Problem of study	3
1.3 Objectives	3
1.3.1 General objective	3
1.3.2 Specific objectives	3
1.4 Over view of the Study	3

Chapter Two: Theoretical background and previous studies

2.1.1 Anatomy of spine	5
2.2 Physiology of the spine	13
2.2.1 vertebral column	13
2.2.2 Spinal cord	13
2.3 normal measurement	13
2.3.1 Magnetic Resonance Imaging	13
2.3.1.2 MRI physics	13

2.4 MRI Technique	17
2.4.1 Patient Positioning	17
2.4.6 Suggested Protocol	17
2.4.3 Additional Sequences	18
2.4.4 Patient Considerations	18
2.4.5 Contrast Usage	18
2.5 Normal measurement for AP diameter of lumbar canal	21
2.6 Previous Studies	22

Chapter Three: Materials and Methods

3.1 Materials	26
3.1.1 patients	26
3.1.2 Machine	26
3.2 Methods	26
3.2.1 technique	26
3.2.2 image diagnosis	27
3.2.3 statistic study	27

Chapter Four :Results

4.1 Results	29
-------------------	----

Chapter Five :Discussion, Conclusion and Recommendations

5.1 Discussion	38
5.2 Conclusion	40
5.3 Recommendations	41
References	42
Appendices	

List of Tables:

4.1 gender distribution among study sample.....31
4.2 age group and gender distribution.....32
4.3 the range of patient’s weight and number of patients.....33
4.4 antero-posterior diameter of lumbar spinal canal among the both
genders.....34
4.5 association between age groups and AP canal diamete.....35
4.6 association between weight and AP canal diameter.....38

List of Figures:

2.1 Normal spinal curvatures with A typical lumbar vertebra	5
2.2 lumbar vertebra from top and side.....	7
2.3 vertebral column ligaments.....	8
2.4 support muscles of the lumbar spine.....	9
2.5 MRI schematic diagram.....	17
2.6 sagittal T1 normal lumbar spine.....	21
2.7 sagittal T2 normal lumbar spine.....	22
2.8 slice prescription boundaries	22
2.9 axial T2 normal lumbar spine.....	23
2.10 vertebral diameters	24
4.1 show gender distributions in study sample	31
4.2 show age distributions among the study sample	32
4.3 shows the range of patient's weight and number of patients....	33
4.4 show the mean of spinal canal diameter of both sex in all lumber levels.....	34
4.5 shows the relationship between mean of AP diameter and age group(2028).....	36
4.6 shows the relationship between mean of AP diameter and age group(2937).....	36
4.7 shows the relationship between mean of AP diameter and age group(3845).....	37

List of Abbreviation:

ALL : Anterior Longitudinal Ligament

AP : AnteroPosterior

CSF : Cerebro Spinal Fluid

CT : Computed Tomography

CTL : Cervical-Thorothic-Lumbar

Fig : Figure

FOV : Field Of View

FSE : Fast Spin Echo

GRE : Gradient Echo

L1 : First lumbar vertebra

L2 : Second lumbar vertebra

L3 : Third lumbar vertebra

L4 : Forth lumbar vertebra

L5 : Fifth lumbar vertebra

LCS : Lumbar Canal Stenosis

mm : Millimetres

MRI : Magnetic Resonance Imaging

PLL : Posterior Longitudinal Ligament

RF : Radio Frequency

S1 : First sacrum vertebra

SE : Spin Echo

Sig : Significance

SPSS : Statistical Package for Social Sciences

T1: Longitudinal relaxation time

T2 : Transvers relaxation time

TE : Time to Echo

TR : Time of Repeat

Abstract

This is an analytical study aimed to determine and measure the normal dimension range of lumbar spinal canal in Sudanese population by using magnetic resonance imaging in order to assess the normal variant between the Sudanese population.

The study found that the longest mean AP diameter was at L1 (17.9 ± 2.0 mm) in male while (17.9 ± 2.7) in female. The shortest mean AP diameter was at S1 (15.9 ± 3.3) in male and (15.5 ± 3.1) in female.

The AP diameter gradually decreased from L1 to S1. There was no significant statistical difference between both gender. There were significant statistical differences exist between AP canal diameter with age and weight of the study sample.

This standardization measurement was made at level L1 to S1, The technologist should know the normal range of spinal canal diameter by seminars and training to correct image interpretation.

ملخص الدراسة

الهدف الرئيسي من هذه الدراسة هو تحديد المعدل الطبيعي لأبعاد القناة الشوكية عند السودانيين بإستخدام التصوير بالرنين المغناطيسي .

هذه الدراسة اجريت في 200 مريض في ولاية الخرطوم (المركز الطبي الحديث) بينهم 109 من الذكور و 91 من الاناث في الفترة من (سمبتمبر إلى نوفمبر) .

تم أخذ القياسات في المستوى مابين الفقره القطنية الأولى الى الفقره العجزية الأولى

وأظهرت النتائج أن أطول قطر 65 سنة من العمر مع متوسط وزن 37-29 أعمارهم ملم (في الإناث .كان 17.9 ± 2.7) ملم (في الذكور 17 ± 2.0) كان في الفقره القطنيه الاولى 15.5 ± 3.1 ملم (في الذكور و 15.9 ± 3.3) أقصر متوسط قطر في الفقره العجزيه الاولى ملم (في الإناث

.القطر الامامي الخلفي للقناه الشوكيه ينخفض تدريجيا من الفقره القطنيه الاولى إلى الفقره العجزيه الاولى

لم يكن هناك فرق كبير بين الجنسين . كانت هناك فروق ذات دلالة احصائية بين القطر الأمامي الخلفي للقناة و عمر و وزن العينة.

هذه القياسات طبقت في المستوى من الفقره القطنية الاولى الى الفقره العجزية الاولى .

لذلك يتوجب على التقني معرفة المعدل الطبيعي لقطر القناة الشوكية من خلال الإطلاع على البحوث السابقة و التدريب لتوضيح محتوى الصورة .

Chapter One

Introduction

Introduction

1.1 Introduction:-

Spinal canal refers to the hollow passage formed by the foramen of the vertebrae through which the spinal cord runs. The spinal canal is filled with cerebrospinal fluid that bathes the nerves. The canal originates at the base of the skull and ends at the sacrum. As the spinal cord descends through the canal, nerve roots emerge from holes to each side of the canal and at the end of the spinal cord, nerves branch out forming a horse-like tail. A condition called spinal stenosis results when the nerve root becomes compressed or choked as it exits the spinal canal due to disc herniation or bone spurs.

Magnetic resonance imaging (MRI) of spine uses radio waves, a magnetic field and a computer to produce a detailed pictures of the lumbar spine and surrounding tissues that are clearer and more detailed than other image methods . . (Int J Health Allied Sci 2015).

spinal stenosis is caused by narrowing of the spinal canal or neural foramina producing root ischaemia and neurogenic claudication. Stenosis of the spinal canal is most often caused by a combination of loss of disc space, osteophytes and a hypertrophic ligamentum flavum. Not all patients with narrowing develop symptoms. Lumbar spinal stenosis, therefore, refers to a clinical syndrome of lower extremity pain caused by mechanical compression on the neural elements or their blood supply.(. Sudan Med Monit 2014).

spinal canal measurements are important diagnostic information for many orthopedic and neurological diseases. This study was aimed to determine the normal diameter range of lumbar canal by using MRI in Sudanese population. The diameter of spinal canal was not significantly correlated with age and gender.(Amonoo-kuofi,et al(2014))

1.2 Problem of study:

Although spinal stenosis has been recognized for many years as a clinical Problem, it has yet to be exactly defined and agreed upon stenotic diameter. And that there was no reference measurements of spinal canal diameter for Sudanese it had to be the work of this study.

1.3 Objectives:

1.3.1 General objective:

To measure spinal canal diameter for Sudanese using magnetic resonance imaging.

1.3.2 Specific objectives:

- To determine the normal anteroposterior diameter of the spinal canal in the lumbosacral region using the magnetic resonant image .
- To determine whether there are any differences related to age, weight ,and gender Regarding the normal AP diameter of lumbosacral spinal canal.

1.4 Over view of the Study:

The study will fall into five chapters, Chapter one consists of introduction, problem of the study, objectives, and the overview of the study. Chapter two includes the literature review, Chapter three detailed the material and methods, Chapter four includes the presentation of the results, chapter five include the discussions, conclusion, recommendation and finally References and Appendices .

Chapter Two

Theoretical background and literature

Review

Theoretical background and previous studies

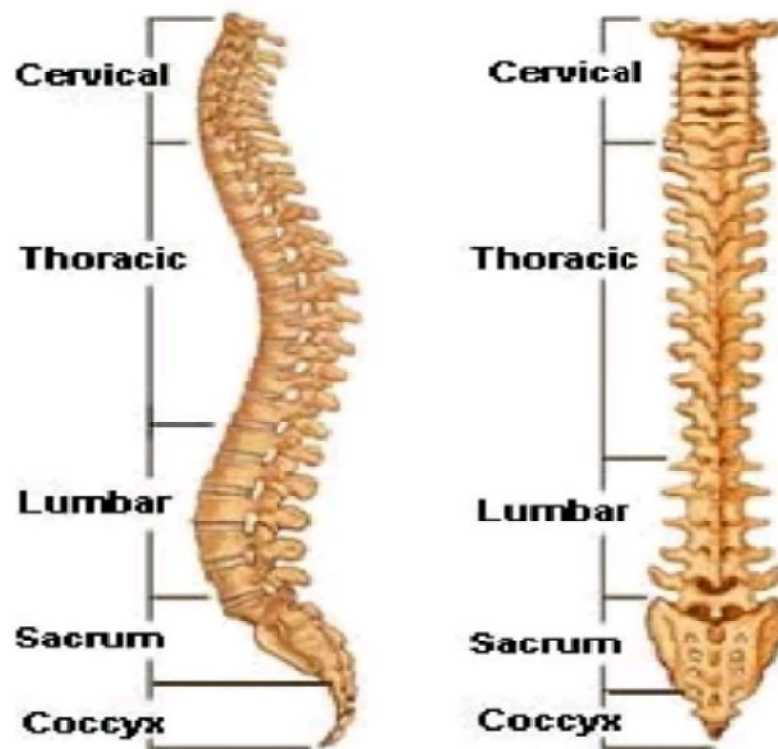
2.1.1 Anatomy of spine

The vertebral column is composed of a series of 31 separate bones known as vertebrae. There are seven cervical or neck vertebrae, 12 thoracic vertebrae, and five lumbar vertebrae. The sacrum is composed of five fused vertebrae, and there are two coccygeal vertebrae which are sometimes fused. In the normal adult there are four curvatures in the vertebral column in an anteroposterior plane. These serve to align the head with a vertical line through the pelvis. In the thoracic and sacral regions, these curves are oriented concave anterior and each is known as a kyphosis. In the lumbar and cervical regions the curves are convex anterior and each is known as a lordosis. These latter normal curvatures develop during childhood in association with lifting the head and assuming upright sitting and they are thus known as secondary curvatures. The thoracic and sacral curvatures are the same in adult as they are in fetal life and they are known as primary curvatures (Stephanie, et al, 2004).

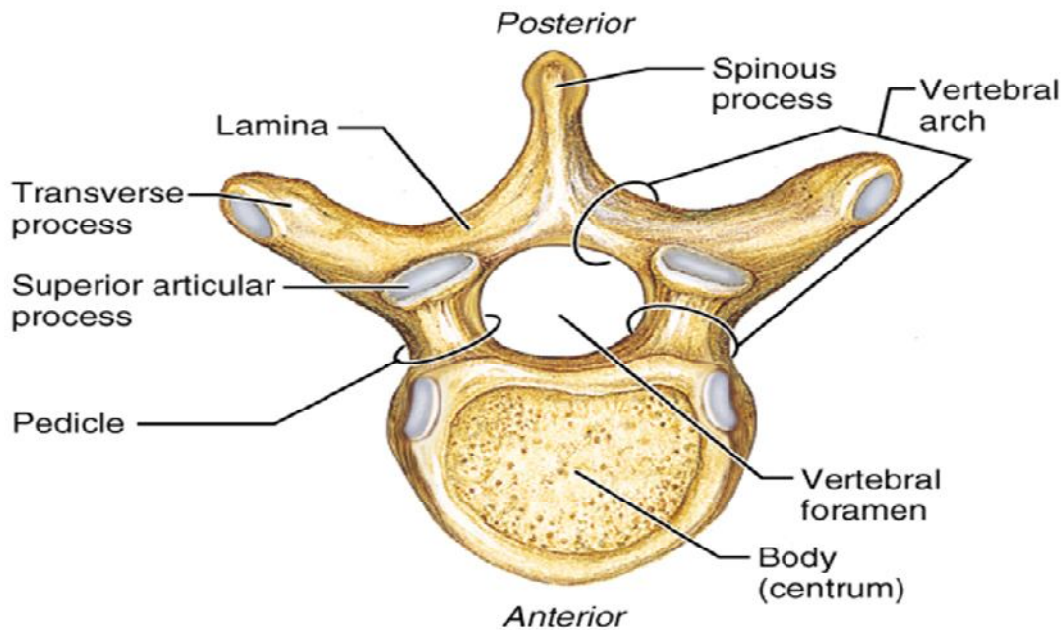
Each vertebra is composed of a body anteriorly and a neural arch posteriorly. The arch encloses an opening, the vertebral foramen, which helps to form a canal in which the spinal cord is housed. Protruding from the posterior extreme of each neural arch is a spinous process and extending from the lateral edges of each arch are transverse processes. These bony elements serve as important sites of attachment of deep back muscles. The neural arch of each vertebrae is divided into component parts by these processes. The parts of the neural arch between the spinous and transverse processes are known as the laminae and the parts of the arch between the transverse processes and the body are the pedicles. At the point where the laminae and pedicles meet, each vertebra contains two superior articular facets and two inferior articular facets. The former pair of facets form articulations, which are synovial joints, with the two inferior articular facets of the vertebra

immediately above (or the skull, in the case of the first cervical vertebra). The pedicle of each vertebra is notched at its superior and inferior edges. Together the notches from two contiguous vertebra form an opening, the intervertebral foramen, through which spinal nerves pass .(Keith ,2015)

Lumbar vertebrae are characterized by massive bodies and robust spinous and transverse processes. Their articular facets are oriented somewhat parasagittally, which is thought to contribute the large range of anteroposterior bending possible between lumbar vertebrae. Lumbar vertebrae also contain small mammillary and accessory processes on their bodies. These bony protuberances are sites of attachment of deep back muscles.(Keith,2015).



Normal spinal curvatures with A typical lumbar vertebra
(Jasper Dunning's AS PE Blog , 2010)



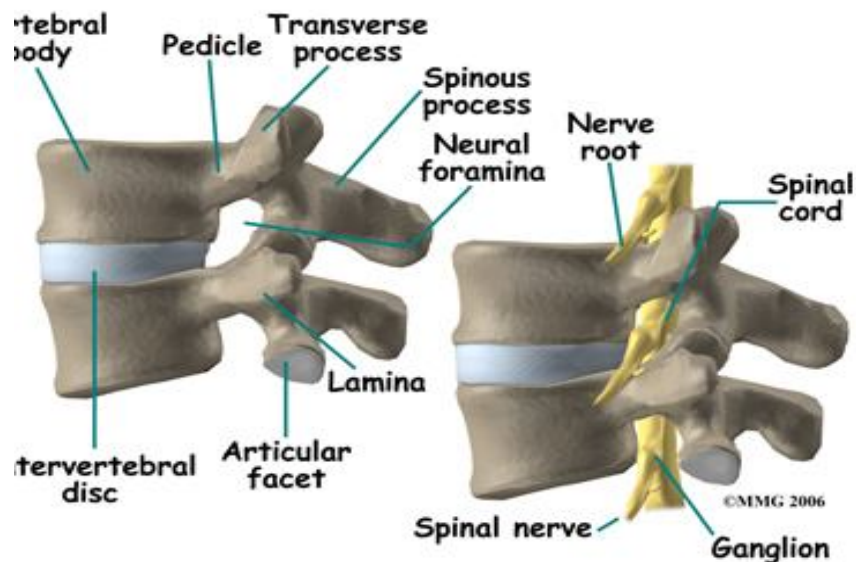
lumbar vertebra from top and side

(Jasper Dunning's AS PE Blog , 2010)

Adjacent vertebrae are connected by three types of intervertebral articulations. Synovial joints are formed between the inferior articular facets of one vertebrae and the superior articular facets of the vertebrae below.

These joints are extensively reinforced by different ligaments. These ligaments connect the tips of the spinous processes (supraspinous ligaments), the base of the spinous processes (interspinous ligaments), and the transverse processes (intertransverse ligaments). In addition the laminae of adjacent vertebrae are bound together by a ligamentum flavum. The bodies of adjacent vertebrae are connected by specialized cartilaginous joints known as intervertebral discs. Each disc is composed of a central core of gelatinous material, known as the nucleus pulposus, and a surrounding series of fibrous rings known as the annulus fibrosus. Normally body weight is transmitted through the disc by loading the nucleus pulposus, which is then compressed and transfers its loading to the annulus fibrosus. In most individuals, the fibers of the annulus fibrosus effectively resist this load, but in some people they do

not and the nucleus pulposus is forced out of the disc, or is herniated. A herniated nucleus pulposus can have a profound effect on the adjacent spinal nerves. Two ligaments connect the vertebral bodies anteriorly and posteriorly and thereby red enforce the intervertebral disc. The anterior longitudinal ligament is strong and robust throughout but the posterior longitudinal ligament becomes thin and narrow in the lumbar region. This change in structure of the posterior longitudinal ligament is part of the reason that the overwhelming majority of disc herniations occur posteriorly in the lumbar region.(Keith,2015



3 vertebral column ligaments

(Jasper Dunning's AS PE Blog , 2010)

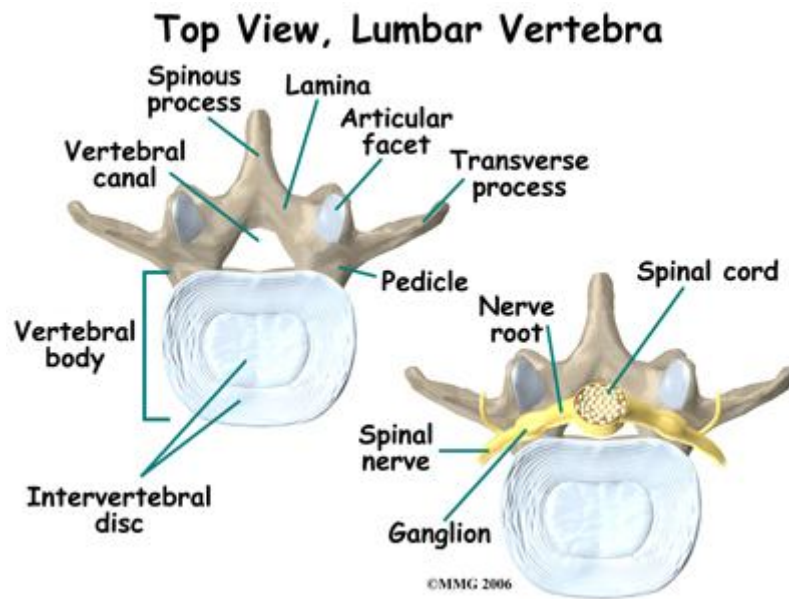


Figure 2.2 shows lumbar vertebra from top and side (Eva et al,2012)

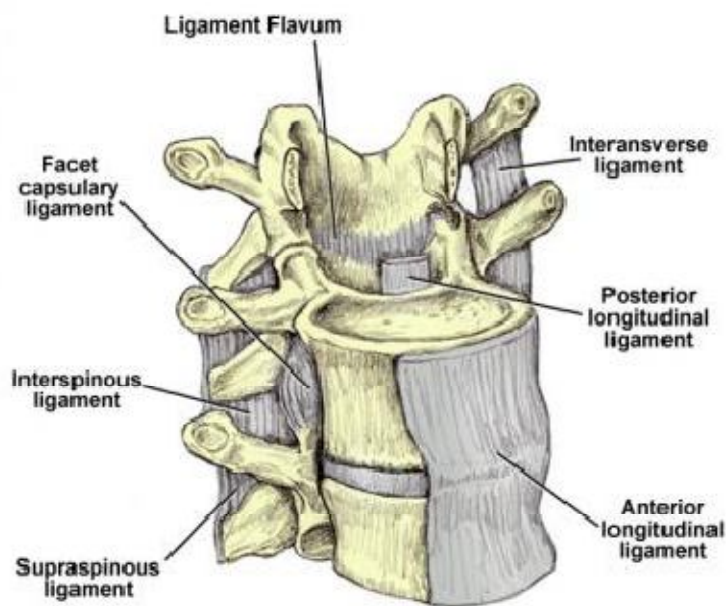


Figure 2.3 shows vertebral column ligaments(Stephen et al,2015)

The two main muscle groups that affect the spine are extensors and flexors. The extensor muscles enable to stand up and lift objects. The extensors are attached to the back of the spine. The flexor muscles are in the front and include the abdominal muscles. These muscles enable to flex, or bend

forward, and are important in lifting and controlling the arch in the lower back. The back muscles stabilize spine. Something as common as poor muscle tone or a large belly can pull entire body out of alignment. Misalignment puts incredible strain on the spine, (Tonya,2013).

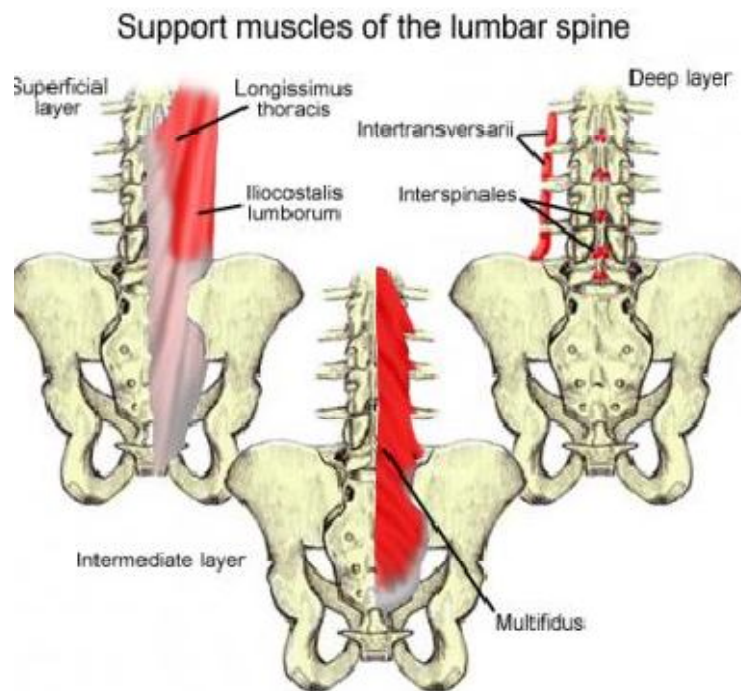


Figure 2.4 shows support muscles of the lumbar spine (Stephen etal,2015)

The spinal cord lies within the vertebral canal and is covered by three membranes, known as meninges. The outermost layer is the dura mater, a tough fibrous sheath closely applied to the inner layer of bone surrounding the spinal canal. Between the dura and the bone is a potential space, the epidural space, which normally contains a small amount of fat and vertebral veins. The spinal dura mater is continuous with the dura mater lining the skull and continues to the level of the second sacral vertebra. It covers each of the spinal nerves as they leave the spinal canal and forms a tough sheath about the dorsal root ganglion. Beneath the dura mater is a thin and delicate membrane called the arachnoid mater, because of its resemblance to a spider's web. Normally the arachnoid mater is closely applied to the

underside of the dura mater, but a potential space exists, the subdural space, which can fill with blood or pus under pathologic conditions. Beneath the arachnoid mater and intimately applied to the spinal cord is the pia mater. Both the arachnoid and pia mater are continuous with the arachnoid and pia surrounding the brain, but unlike the arachnoid, which follows the dura mater, the pia essentially ends, with the caudal end of the spinal cord, at the level of the second lumbar vertebra. A rope like extension of the pia mater, the filumterminale attaches the end of the spinal cord to the caudal end of the dura mater. In addition, the pia mater contains lateral projections called denticulate ligaments, which connect the spinal cord to the dura mater by projecting between the dorsal and ventral roots. The space between the arachnoid mater and pia mater is the subarachnoid space. It is normally filled with cerebrospinal fluid, which surrounds the entire brain and spinal cord. (Tonya ,2013).

The spinal cord proper begins at the level of the foramen magnum of the skull and ends at the level of the L1,L2 intervertebral joint . There it tapers to a cone shaped ending known as the conusmedullaris. A stalk of pia mater, the filumterminale attaches it to the end of the dura mater at S2. All of the roots of the spinal nerves from L2 to the lowest coccygeal nerve pass caudal to the conusmedullaris to exit at their respective intervertebral foramina. This mass of spinal roots within the spinal canal in the subarachnoid space is known as the caudaequina. The area of the subarachnoid space below the L2 vertebra typically L4 is considered a safe place to insert a needle to sample cerebrospinal fluid, since only nerve roots and not spinal cord are found there. The posterior protrusion of a herniated lower lumbar intervertebral disc, while not pressing on the spinal cord, can compress a lumbar nerve root, causing severe pain or physical dysfunction in distinct areas of the lower limb. (Tonya ,2013).

Lumbar vertebrae are contacted anterolaterally by paired lumbar arteries that arise from the aorta, opposite the bodies of L1-L4. Each pair passes anterolaterally all around the side of the vertebral body to a position immediately lateral to the intervertebral canal and leads to various branches. The periosteal and equatorial branches supply the vertebral bodies. Spinal branches of the lumbar arteries enter the intervertebral foramen at each level. They divide into smaller anterior and posterior branches, which pass to the vertebral body and the combination of vertebral arch, meninges, and spinal cord,

respectively. (Stephen et al, 2015) These arteries give rise to ascending and descending branches that anastomose with the spinal branches of adjacent levels. Nutrient arteries from the anterior vertebral canal travel anteriorly and supply most of the red marrow of the central vertebral body. The larger branches of the spinal branches continue as radicular

or segmental medullary arteries, distributed to the nerve roots and to the spinal cord, respectively. Up to age 8 years, intervertebral discs have a good blood supply. Thereafter, their nutrition is dependent on diffusion of tissue fluids through 2 routes: (1) the bidirectional flow from the vertebral body to the disc and vice versa and (2) the diffusion through the annulus from blood vessels on its surface. As adults, the discs are generally avascular structures, except at their periphery. The venous drainage parallels the arterial supply. Venous plexuses are formed by veins along the vertebral column both inside and outside the vertebral canal (internal/epidural and external vertebral venous plexuses). Both plexuses are sparse laterally but dense anteriorly and posteriorly. The large basivertebral veins form within the vertebral bodies, emerge from the foramen on the posterior surfaces of the vertebral bodies, and drain into the internal vertebral venous plexuses, which may form large longitudinal sinuses. The intervertebral veins anastomose with veins from the

cord and venous plexuses as they accompany the spinal nerves through the foramen to drain into the lumbar segmental veins.(Stephen etal,2015)

2.2 Physiology of the spine:

2.2.1 vertebral column:

The major functions of the vertebral column are protection of the spinal cord providing stiffening for the body and attachment for the pectoral and pelvic girdle and many other muscles, providing motion for the human skeleton, transmitting body weight in walking and standing, produce red blood cells by bones, and mineral storage.(G farr,2007)

2.2.2 Spinal cord:

The spinal cord has two principal functions in maintaining homeostasis: nerve impulse propagation and integration of information. The white matter tracts in the spinal cord are highways for nerve impulse propagation. Sensory input travels along these tracts toward the brain, and motor output travels from the brain along these tracts toward skeletal muscles and other effector tissues. The gray matter of the spinal cord receives and integrates incoming and outgoing information. Spinal nerves connect the brain and spinal cord to the limbs and organs of the body.(G farr,2007)

2.3 normal measurement :

The major pathological conditions that affected the spine are:

2.3.1 Magnetic Resonance Imaging :

2.3.1.2 MRI physics:

Magnetic resonance imaging (MRI) is a medical imaging procedure that uses strong magnetic fields and radio waves to produce cross-sectional images of organs and internal structures in the body. Because the signal detected by an MRI machine varies depending on the water content and local magnetic properties of a particular area of the body, different tissues or substances can be distinguished from one another in the study image.MRI can give different information about structures in the body than can be obtained using a standard x-ray, ultrasound, or computed tomography (CT) exam. an MRI

exam of a joint can provide detailed images of ligaments and cartilage, which are not visible using other study types. In some cases, a magnetically active material (called a contrast agent) is used to show internal structures or abnormalities more clearly.(Pooely,2005).

Many MR systems are commercially available, each possessing different features and capabilities that are often difficult to evaluate and compare objectively. Many of these features are based on the operating software provided by the manufacturer, but certain hardware components are common to all systems. The major components are the computer and image processing systems, a magnet system, a gradient system, a radiofrequency system, and a data acquisition systems(Pooely,2005).

MRI does not use ionizing radiation. There are no known harmful side-effects associated with temporary exposure to the strong magnetic field used by MRI scanners. There are important safety concerns to consider before performing or undergoing an MRI scan: The magnet may cause pacemakers, artificial limbs, and other implanted medical devices that contain metal to malfunction or heat up during the exam, Any loose metal object may cause damage or injury if it gets pulled toward the magnet, If a contrast agent is used, there is a slight risk of an allergic reaction. MRI contrast agents can cause problems in patients with significant kidney disease, Dyes from tattoos or tattooed eyeliner can cause skin or eye irritation, Medication patches can cause a skin burn, The wire leads used to monitor an electrocardiogram (ECG) trace or respiration during a scan must be placed carefully to avoid causing a skin burn and Prolonged exposure to radio waves during the scan could lead to slight warming of the body. (Pooely, 2005)

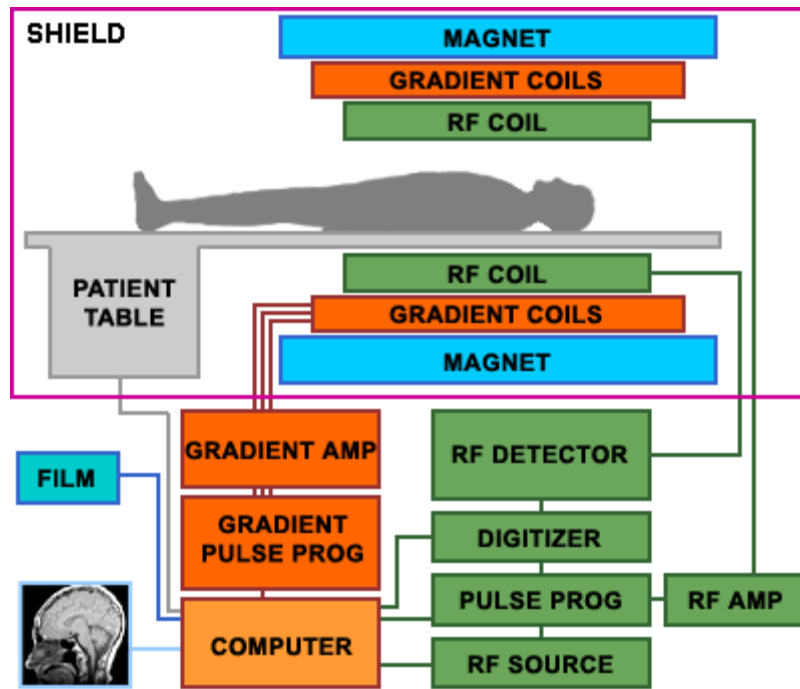


FIGURE 2.5 MRI schematic diagram (Pooley, 2005)

MRI is widely used now to visualize the spinal column and its contents. T1- and

T2-weighted images give information about morphology and integrity of discs and vertebrae, the intervertebral foramina and facet joints, and an outline of the spinal cord. The vertebrae have a low-signal outer rim surrounding the high-signal cancellous bone. The basivertebral veins are seen in the posterior midline of the vertebral body. (Malcolm, 2002)

A very simplified pulse sequence is a combination of RF pulses, signals and intervening periods of recovery. TR and TE. A pulse sequence consists of several time periods: The repetition time (TR) is the time from the application of one RF pulse to the application of the next RF pulse for each slice and is measured in milliseconds (ms). The TR determines the amount of longitudinal relaxation that is allowed to occur between the end of one RF pulse and the application of the next. TR thus determines the amount of T1 relaxation that has occurred when the signal is read. The echo time (TE) is the time from the application of the RF pulse to the peak of the signal induced

in the coil and is also measured in (ms). The TE determines how much decay of transverse magnetization is allowed to occur. TE thus controls the amount of T2 relaxation that has occurred when the signal is read. (Catherine Westbrook, etal –2011)

To demonstrate either T1, proton density or T2 contrast, specific values of TR and TE are selected for a given pulse sequence. The selection of appropriate TR and TE weights an image so that one contrast mechanism predominates over the other two. A T1 weighted image is one where the contrast depends predominantly on the differences in the T1 times between fat and water (and all the tissues with intermediate signal). Because the TR controls how far each vector recovers before the slice is excited by the next RF pulse, to achieve T1 weighting the TR must be short enough so that neither fat nor water has sufficient time to fully return to B 0.

If the TR is too long, both fat and water return to B 0 and recover their longitudinal Magnetization fully. When this occurs, T1 relaxation is complete in both tissues and the differences in their T1 times are not demonstrated. TR controls the amount of T1 weighting. For T1 weighting the TR must be short. (Catherine Westbrook, etal –2011)

A T2 weighted image is one where the contrast predominantly depends on the differences in the T2 times between fat and water (and all the tissues with intermediate signal). The TE controls the amount of T2 decay that is allowed to occur before the signal is received. To achieve T2 weighting, the TE must be long enough to give both fat and water time to decay. If the TE is too short, neither fat nor water has had time to decay, and therefore the differences in their T2 times are not demonstrated. TE controls the amount of T2 weighting. For T2 weighting the TE must be long. (Catherine Westbrook, etal –2011)

A proton density image is one where the difference in the numbers of mobile hydrogen protons per unit volume in the patient is the main determining

factor in forming image contrast. Proton density weighting is always present to some extent.

To achieve proton density weighting, the effects of T1 and T2 contrast must be diminished so that proton density weighting can dominate. A long TR allows both fat and water to fully recover their longitudinal magnetization and so diminishes T1 weighting. A short TE does not give fat or water time to decay and so diminishes T2 weighting. In any image, the contrast due to the inherent proton density together with T1 and T2 mechanisms occur simultaneously and contribute to image contrast. To weight an image so that one process is dominant, the other processes must be diminished. (Catherine Westbrook, et al –2011)

2.4 MRI Technique:

2.4.1 Patient Positioning:

The patient lies supine on the examination couch with their knees elevated over a foam pad, for comfort and to flatten the lumbar curve so that the spine lies nearer to the coil. The coil should extend from the xiphisternum to the bottom of the sacrum for adequate coverage of the lumbar region. The patient is positioned so that the longitudinal alignment light lies in the midline, and the horizontal alignment light passes just below the lower costal margin, which corresponds to the third lumbar vertebra. (Catherine Westbrook. – 2008)

2.4.6 Suggested Protocol:

- Sagittal/coronal SE/FSE T1 or coherent GRE T2* Acts as a localizer if three-plane localization is unavailable.
- Sagittal SE/FSE T1
- Sagittal SE/FSE T2 or coherent GRE T2*
- Axial/oblique SE/FSE T1/T2 or coherent GRE T2* (Catherine Westbrook. – 2008)

2.4.3 Additional Sequences:

1. Axial/oblique or Sagittal SE/FSE T1 With contrast for determining disc prolapse versus scar tissue in failed back syndrome, and for some tumours.
2. Coronal SE/FSE T1 For cord tethering or alternative view of conus when sagittals are inconclusive.
3. Axial/oblique FSE T2 For arachnoiditis. (Catherine Westbrook. 2008)

2.4.4 Patient Considerations:

Many patients are in severe pain especially if they are suffering from a prolapsed lumbar disc. Make the patient as comfortable as possible with pads supporting their knees in a slightly flexed position. Small pads placed in the lumbar curve often help to alleviate sciatica and other types of back pain. Due to excessively loud gradient noise associated with some sequences, ear plugs must always be provided to prevent hearing impairment. (Catherine Westbrook. – 2008)

2.4.5 Contrast Usage:

Contrast is used to distinguish disc prolapse from scar tissue post-operatively in failed back syndrome. Contrast is also invaluable to visualize suspicious lesions in the conus. (Catherine Westbrook. – 2008).



Figure 2.6 shows sagittal T1 normal lumbar spine . (Catherine Westbrook. – 2008).



Figure 2.7 shows sagittal T2 normal lumbar spine. (Catherine Westbrook. – 2008).

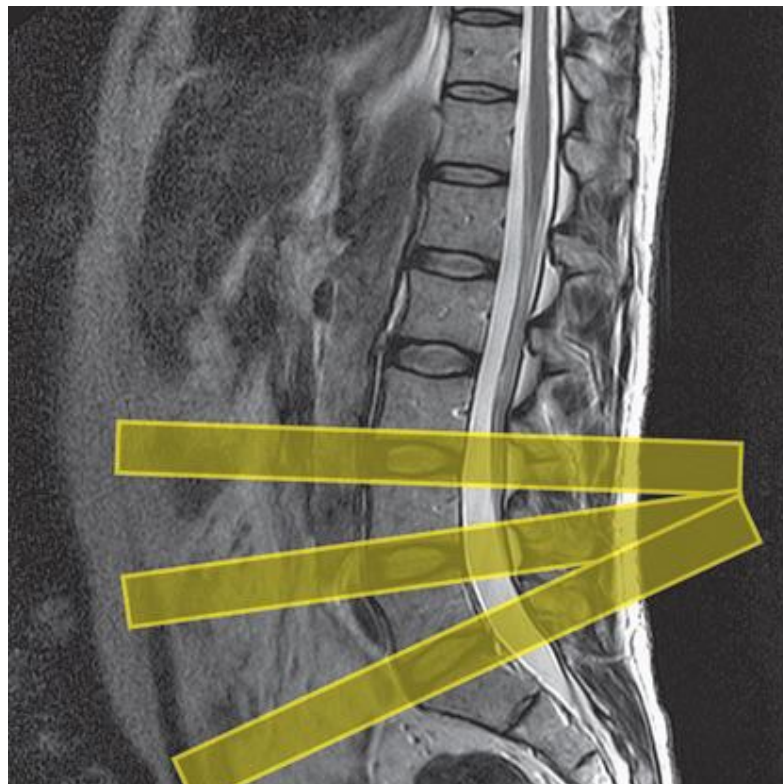


Figure 2.8 showing slice prescription boundaries and orientation for axial/oblique imaging of lumbar discs in sagittal T2.(Catherine Westbrook. – 2008).

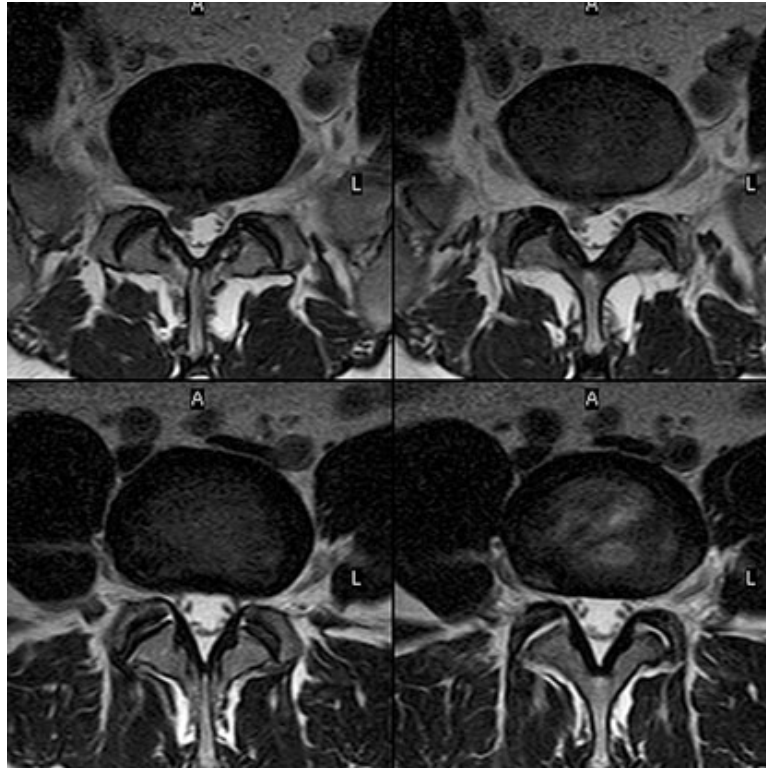


Figure 2.9 shows axial/oblique T2 of lumbar spine. (Catherine Westbrook. – 2008).

2.5 Normal measurement for AP diameter of lumbar canal:

The lumbar vertebral canal is roughly triangular in shape and is narrowest in its anteroposterior diameter in the axial plane. The average anteroposterior diameter of the lumbar canal in adults, as determined by anatomic and radiographic studies, ranges from 15 to 23 mm. The canal is bounded anteriorly by the posterior edge of the vertebral body including the posterior longitudinal ligament, which is closely apposed to the posterior vertebral body surface, laterally by the pedicles, posterolaterally by the facet joints and articular capsules, and posteriorly by the lamina and ligamenta flava. There are four diameters of vertebra: transvers diameter of canal represented as A, anteroposterior diameter of canal represented as B, transvers diameter of vertebral body represented by C, and anteroposterior diameter of vertebral body represented as D.

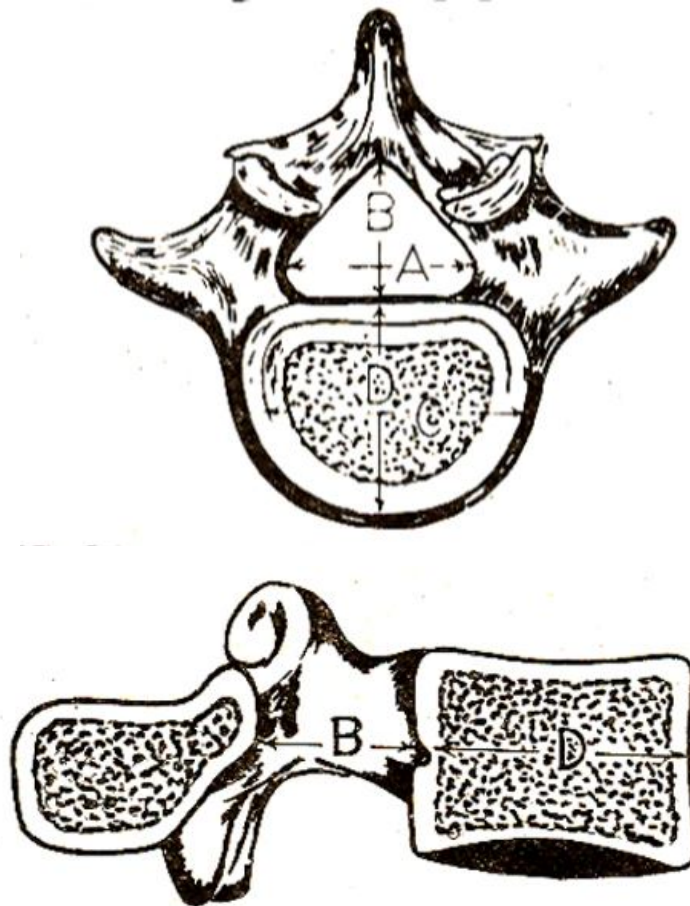


FIGURE 2.10 shows the vertebral diameters.(Malcolm, G.P. (2002))

2.6 Previous Studies:

Yasir A Elhassan,etal (2014) were studied Sagittal diameter of the lumbosacral spinal canal in normal (asymptomatic) adult Sudanese population . This study aims to determine the normal Anteroposterior diameter of the spinal canal in lumbosacral region among the adult Sudanese population using the MRI and to determine whether there are any differences related to age, sex and race regarding this diameter. MRI measurements were performed for 142 normal Sudanese subjects to study the lumbosacral region. The data was collected through check list, analyzed by SPSS.The majority of the participants were male (57%), young between 20and 28 years of age with mean height 168cm and mean weight 66 kilogram. The results showed that the longest mean AP diameter was at L1 (17.5 ± 2.0 mm) in male while (18.1 ± 2.7) in female. The shortest mean AP diameter was at S1

(15.9±3.2mm) in male and (15.4±3.2) in female. The AP diameter gradually decreased from L1 to S1. there is no significant difference between both sexes. There is significant difference between people live in different zones. There is association between age, height and weight and the AP canal diameter. Two study groups were studied, the symptomatic LCS group, consisted of 30 individuals of either sex in age group of 45-65 years. Dimensions of lumbar canal at all the levels (L1-L5) of lumbar vertebra of 60 patients were measured. Critical canal dimension was found to be 11.13 mm. Mehmaz Mashoufi et al (2010) were studied The Evaluation of Lumbar Spinal Canal Diameters by MRI. The aim of this study is to evaluate lumbar spinal canal diameters and relationship with gender, age, stature, weight and job. The results showed that at least anteroposterior diameter was at the third lumbar vertebra but the narrowest transverse diameter was at the first lumbar vertebra. The mean anteroposterior diameter of the lumbar spinal canal decreased from the first to the third lumbar vertebra, followed by an increase from the third to the fifth. From the first to the fifth lumbar vertebra, there was an increase in the mean transverse diameters. The mean transverse diameter in the middle part of the vertebra is longer than the lower part.

Dae Moo Shim, et al (2008) were studied Analysis and Measurement of the Lumbar Spinal Canal Dimension using Magnetic Resonance Imaging. The purpose of this study is to determine reference values of the spinal canal dimension in a population of normal Korea subjects and to evaluate other measurement methods of the spinal canal dimension that correlate to normal spinal canal dimensions determined using Magnetic Resonance Imaging (MRI) were studied 100 patients who had mild symptoms and had normal MRI findings from 2475 outpatients that had undergone lumbar MRI from November 2002 to May 2004. The dimension of the spinal canal and dural sac was measured at the center of intervertebral discs L3/4, L4/5 and L5/S1. The dimension of the spinal canal and vertebral body was measured and was

compared at the transverse plane perpendicular to the spinal canal that transected L4, L5 and the S1 pedicle .The results for the sequence of L3/4, L4/5 and L5/S1, the mean spinal canal dimensions were 249.38 ± 38.30 mm², 253.04 ± 48.62 mm² and 288.46 ± 57.62 mm², respectively. For the sequence of L4, L5 and S1, the mean spinal canal dimensions were 279.78 ± 42.36 mm², 301.50 ± 54.26 mm² and 355.10 ± 60.65 mm², respectively. The correlation coefficient was high at 0.913 for the L3/4 and L4 interpedicular transverse plane. The correlation coefficient for L4/5 and L5 was 0.905, and the correlation coefficient for L5/S1 and S1 was 0.845 .

Chapter Three

Materials and Methods

Materials and Methods

3.1 Materials:

This study was retrospective descriptive cross-sectional analytical study. All measurements were done in Modern Medical Center during 2015.

3.1.1 patients:

200 patients in both gender undergo MRI test for spine and diagnosed as normal

.the age ranged (20-45)years. Any subject with a history of trauma to the low back was excluded from the study also those who developed low back pain and/or lower-extremity pain, vertebral abnormalities, gross spinal pathology (e.g. spondylo-listhesis), previous spinal surgery, females who were pregnant or suspected to be pregnant all were excluded from the study. And those who refused to participate after the researcher explanation.

3.1.2 Machine:

(GEhelthcare) close MRI machine with 1.5 tesla and CTL coil.

3.2 Methods:

3.2.1 technique:

The patient lies on the examination couch with their knees elevated over foam pad, for comfort and to flatten the lumbar curve so that the spine lies nearer to the coil. The coil should extend from the xiphisternum to the bottom of the scrum for adequate coverage of the lumbar region. The patient is positioned so that the longitudinal alignment light lies in the midline, and the horizontal alignment light passes just below the lower costal margin ,which corresponds to the third lumbar vertebra.

MRI of the lumbosacral spine was performed with multiplane imaging and multiweighted sequences. The following sequences were obtained:

*AxialT1(TR)/(TE)500/1ms, the matrix size 446x512,FOW300X300, slice thickness 5mm, and (FSE)sequence.

*Sagittal T1(TR)/ (TE) 500/10 msec. the matrix size was 334x512, FOW300x300,

slice thickness 5 mm , and (SE)sequence.

*Axial T2(TR)/ (TE) 3500/120 msec. the matrix size was 390x512, FOW 250x250, slice thickness 5 mm.

3.2.2 image diagnosis:

The antero-posterior diameter was measured posterior from the junction of lamina and anterior from border of body of vertebra in axial/oblique T2 image. The antero-posterior diameter of osseous measured from the posterior border of vertebra to the pedicles in the mid sagittal image. Using the cursor of the mouse over an initial reference point these measurement of vertebral canal made (Appendix c1,c2) .

3.2.3 statistic study:

The data were collected by data collection sheets include the gender, age, weight, canal diameter in level L1,L2,L3,L4,L5 and S1 after saved it on CDes from MEDICAL MODREN CENTER computer.All calculations made by using SPSS windows softwere.

Chapter Four

Results

Chapter Four Results

4.1 Results:

Table 4.1 shows gender distribution among study sample

Gender	Male	Female
Frequency	109	91

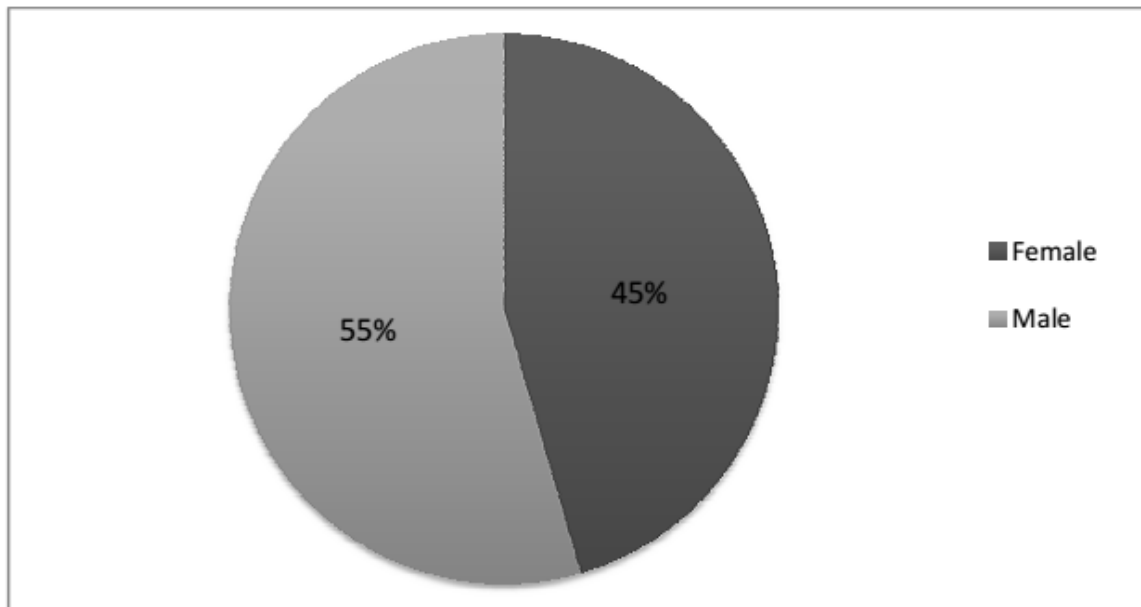


Figure 4.1 shows gender distribution in study sample

Table 4.2 shows age group and gender distribution

Age group	No of patients	Percentage
20-28	68	33.90%
29-37	99	49.50%
38-45	33	16.50%

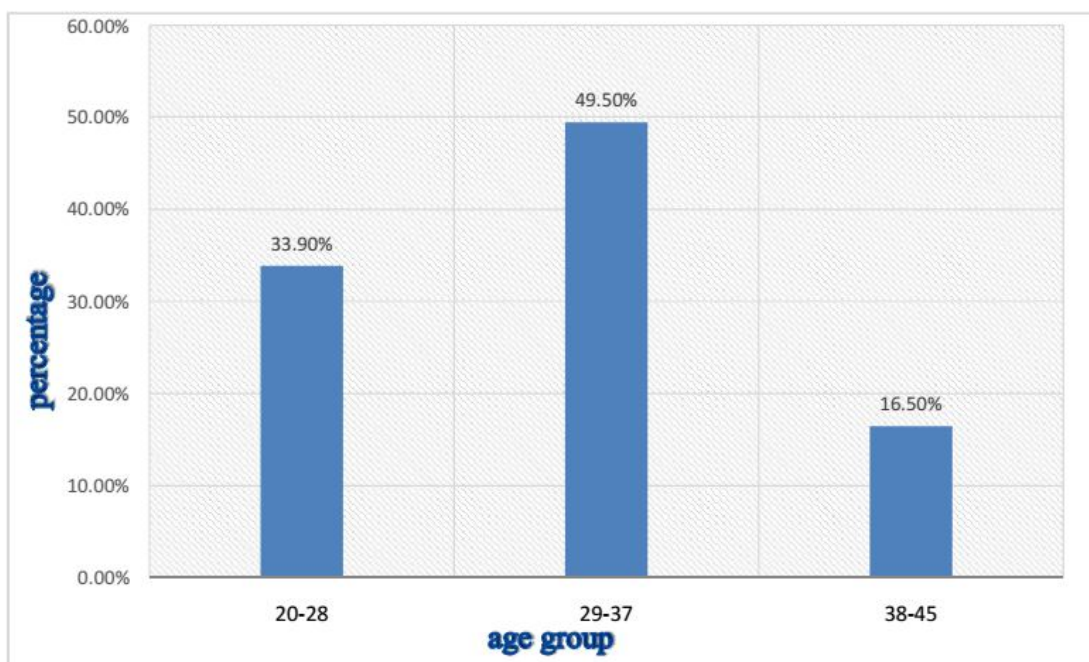


Figure 4.2 show age group distribution among the study sample

Table 4.3 the range of patient's weight and number of patients

Range of weight(Kg)	No of patients	Percentage
50-59	36	18%
60-69	40	20%
70-79	72	36%
80-89	36	18%
90-99	8	4%
100-109	8	4%

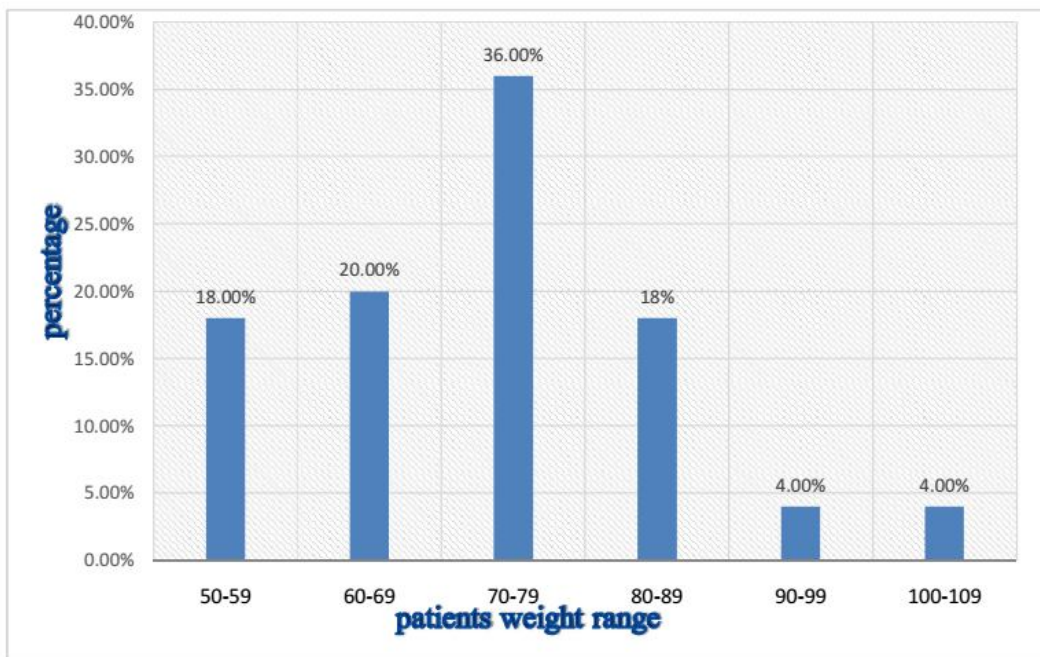


Figure 4.3 show the range of patient's weight and number of patients

Table 4.4 shows anteroposterior diameter of lumbar spinal canal among the both gender

AP diameter					
Level	Male	Male	Female	Female	P value
	Mean	Standard	Mean	Standard	
		deviation		deviation	
L1	17.4	2.0	17.9	2.7	0.177
L2	17.2	4.7	17.7	3.1	0.436
L3	16.2	2.6	17.1	3.2	0.059
L4	16.2	2.5	17	2.9	0.086
L5	16.6	2.7	17	2.5	0.475
S1	15.9	3.3	15.5	3.1	0.397
	*P value	≤ 0.05 if there	is significant	relationship	

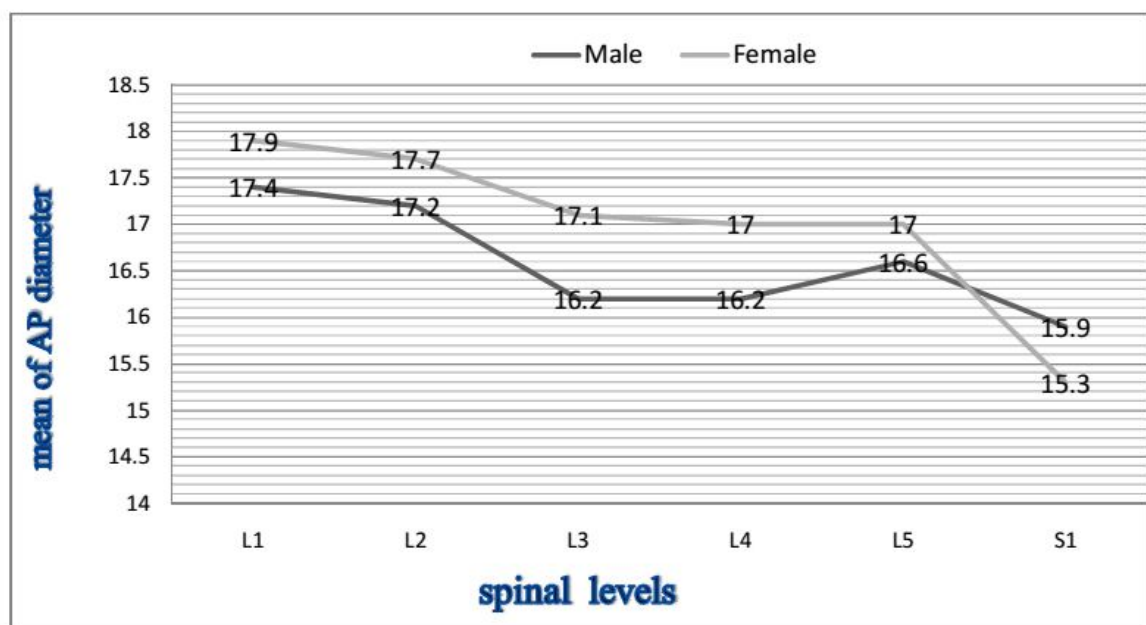


Figure 4.4 the mean of spinal canal diameter of both gender in all lumbar levels

Table 4.5 shows association between age groups and AP canal diameters

Level	Age group	Mean	Standard deviation	P value
L1	20-28	18.20	2.5	0.031
	29-37	17.64	2.2	
	38-45	16.69	1.8	
L2	20-28	17.72	2.7	0.039
	29-37	17.74	5.5	
	38-45	16.31	1.9	
L3	20-28	17.17	3.1	0.041
	29-37	16.31	2.8	
	38-45	15.46	1.9	
L4	20-28	17.07	2.9	0.059
	29-37	15.91	2.5	
	38-45	16.34	1.9	
L5	20-28	17.43	2.5	0.026
	29-37	16.45	2.6	
	38-45	15.92	2.1	
S1	20-28	16.92	3.01	0.040
	29-37	15.42	3.1	
	38-45	14.36	3.2	

***P value \leq 0.05 if there is significant relationship**

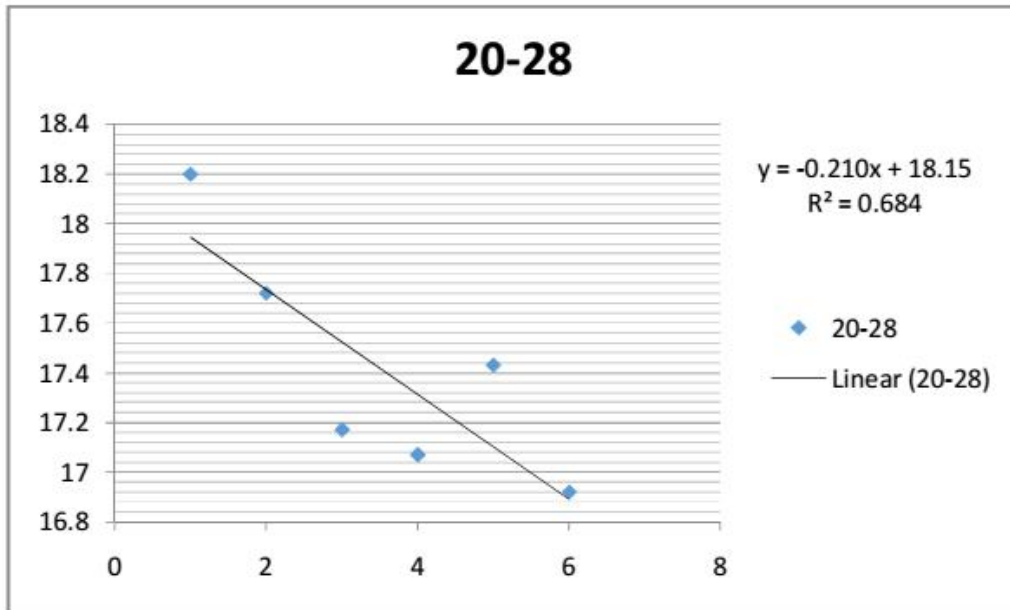


Figure 4.5 shows the relationship between mean of AP diameter and age group (20-28).

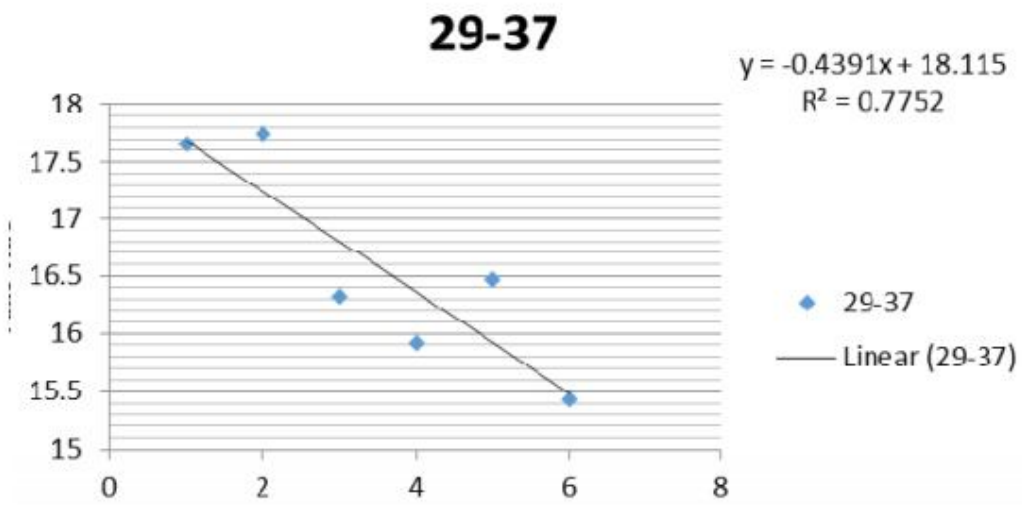


Figure 4.6 shows the relationship between mean of AP diameter and age group(29-37).

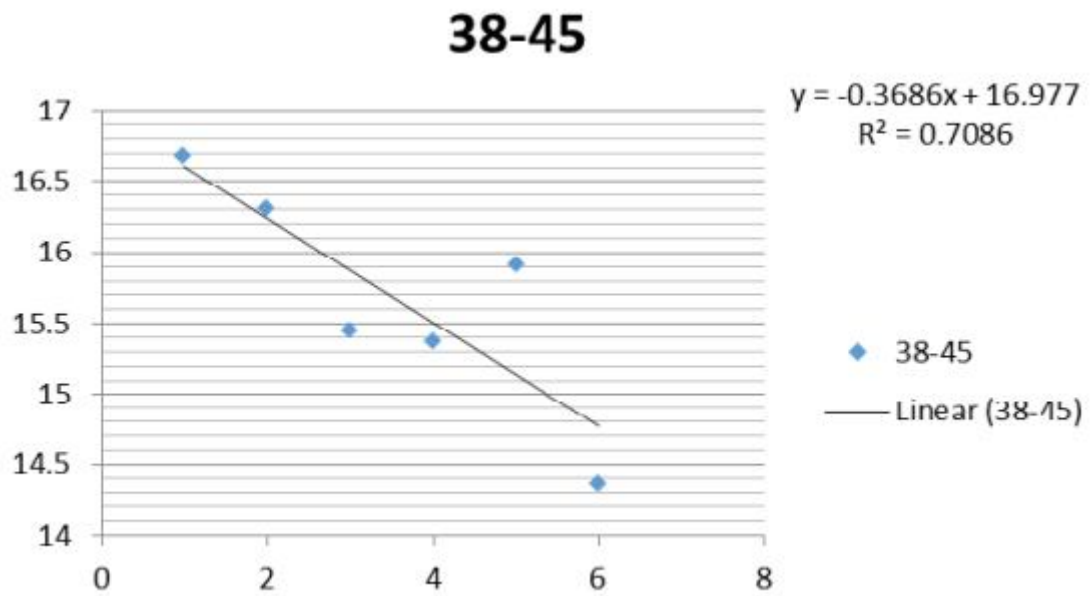


Figure 4.7 shows the relationship between mean of AP diameter and age Group (38-45).

Table4.6 association between weight and AP canal diameter

Level	Chi test	Weight
L1	Pearson correlation	0.085
	Sig.(2-tailed)	0.313
L2	Pearson correlation	0.031
	Sig.(2-tailed)	0.710
L3	Pearson correlation	0.002
	Sig.(2-tailed)	0.982
L4	Pearson correlation	0.015
	Sig.(2-tailed)	0.858
L5	Pearson correlation	0.054
	Sig.(2-tailed)	0.520
S1	Pearson correlation	0.093
	Sig.(2-tailed)	0.272

Chapter Five

Discussion, Conclusion and Recommendations

Chapter Five

Discussion, Conclusion and Recommendations

5.1 Discussion:

Accurate anatomic descriptions of vertebral anatomy are necessary for the diagnosis of various spinal diseases. In this study, MRI was used, which is considered the mainstay imaging investigation in patients suspected with spinal canal disease to make lumbar canal measurement in Sudanese population. All measurements was done in the axial sections of the vertebrae allowed the best view for studying the normal morphology of the vertebra. Table and Figure (4-1) shows gender distribution among study sample as 109 (55%) in male and 91(45%) in female. Table and Figure (4-2) shows age group distribution by numbers and percentage.

This agree with the result of YM Elhassan, QM Ali, AO Ahmed (2014) research that the longest mean AP diameter was at L1 (17.5 ± 2.0 mm) in male while (18.1 ± 2.7) in female. The shortest mean AP diameter was at S1 (15.9 ± 3.2 mm) in male and (15.4 ± 3.2) in female, the AP diameter gradually decreased from L1 to S1 in female while decrease from L1 to L4 in male then slightly increase at L5 and again decrease at S1 The female mean AP diameter was larger than the male. However, the different was statistically not significant at all lumbosacral levels.

Table and Figure (4-3) shows weight range in Kg and numbers of patients with percentage. Table and Figure (4-4) shows The average spinal canal AP diameter at each level and according to gender. The AP diameter in male were(17.4 ± 2), (17.2 ± 4.7), (16.2 ± 2.6), (16.2 ± 2.5), (16.2 ± 2.7) and (15.9 ± 3.3) at L1, L2, L3, L4, L5 and S1. while the AP diameter in female were (17.9 ± 2.7), (17.7 ± 3.1), (17.1 ± 3.2), (17 ± 2.9), (17 ± 2.5) and (15.5 ± 3.1) at L1, L2, L3, L4, L5 and S1. The

longest mean AP diameter was at L1 (17.4 ± 2.0 mm) in male while (17.9 ± 2.7) in female. The shortest mean AP diameter was at S1 (15.9 ± 3.3 mm) in male and (15.5 ± 3.1) in female, the AP diameter gradually decreased from L1 to S1 in female while decrease from L1 to L4 in male then slightly increase at L5 and again decrease at S1 . The female mean AP diameter was larger than the male.the different was statistically not significant at all lumbosacral levels.This result similar to study of Yassirelhassan(2014)that said the longest mean AP diameter was at L1 (17.5 ± 2.0 mm) in male while (18.1 ± 2.7) in female. The shortest mean AP diameter was at S1 (15.9 ± 3.2 mm) in male and (15.4 ± 3.2) in female. The AP diameter gradually decreased from L1 to S1.also, similar in no relation between two gender. Table (4-5)shows The relationship between the patient age and AP diameter was found to be a weak direct relationship , with person correlation coefficient(0.031)in L1,(0.329)in L2,(0.041)in L3,(0.059)in L4,(0.026)in L5 and (0.040)in S1.This results are different to study of MehmazMashoufi ,etal(2010) that said there was no relation with age. Figures 4.5, 4.6 and 4.7shows the relationship between mean of AP diameter and age groups with the equation of each one . Table (4-6)shows The relationship between weight and AP diameter was found to be a weak direct relationship with person correlation coefficient (0.085),(0.031), (0.002),(0.015),(0.054),(0.093) inL1,L2, L3,L4,L5,S1 respectively. This results are different to study of MehmazMashoufi ,etal(2010) that said there was no relation with weight but similar to study of yasirelhassan. The measurement of this study is larger than Indian and Azerbaijan but smaller than Korean measurements of spinal canal diameter. All this measurements were said to be normal for the study group, in comparison to other studies , the different in population (body type) and sample size but the pattern of changes in AP

diameter was similar to this study results. So this measurements may taken as normal spinal canal diameter for Sudanese population.

5.2 Conclusion:

The study concluded that the longest mean AP diameter was at L1(17.4±2.0mm) in male while (17.9±2.7) in female. The shortest mean AP diameter was at S1 (15.9±3.3mm) in male and (15.5±3.1) in female. longest mean AP diameter was at L1 that gradually decreased from L1 to S1. The equation of AP diameter with age is described in ($y=0.02106x+18.155$) for ages 20-28,($y=0.4391x+18.155$) for ages 29-37 and ($y=0.3686x+16.977$) for ages 38-45. There was no significant statistical difference between both gender. There were significant statistical differences exist between AP canal diameter and the age and weight of the study sample.

5.3 Recommendations:

Testing the suggested clinical diagnosis and patients with lumbar canal measurements from this research. The technologist should know the normal range of lumbar canal diameter by seminars and training to correct image interpretation.

Further similar study using other patient's information height, subject's work and different living zone.

References:

- kuofi,et al(2014), maximum and minimum lumbar interpedicular Amonoo distances in normal adult negerians Using CT Scan Images, Forensic Medicine and Anatomy Research, 2014, 2, 28-36
- April. K. Smith ,2010 , Aging of the lumber vertebrae using known age and sex sample , Georgia state university scholar work @ Georgia state university ,page 3-5
- Catherine Westbrook ,(2008)Handbook of MRI Technique, 3rdedition, Part2,140-149
- Catherine Westbrook,etal (2011) MRI in practice ,4th edition, chapter 1and 2,19-35
- Fernand R Fox DE ,in 2005,Evaluation of lumbar lordosis, 2005//Vol. 55 Iss. 3//pgs. 415-420 http://www.fda.gov/Radiation_EmittingProducts/RadiationEmittingProductsandProcedures/MedicalImaging/ucm200086.htm
- http://www.physio-pedia.com/lumbar_Vertebrae
- Jodi Boling,MSN RNCNS CNRN,etal 2007,lumbar Spine Surgery AGuide to preoperative and postoperative patient care, AANN American Association of Neuroscience Nurses 4700W.LAKE avenue Glen view ,IL 60025 -1485 888/557-2266,Page 12-1
- Kyung Hyun Kim, et al,(2013) , Changes in Spinal Canal Diameter and Vertebral Body Height with Age , Yonsei Med J 54(6):1498-1504
- Maidia M, Miabi Z, Quantitative size assessment of the lumbar spinal canal by CT (2003) 41, 159 ± 163
- Malcolm, G.P. (2002) Surgical Disorders of the lumbar spine: Presentation and Management of Common Disorders,Journal of Neurology, Neurosurgery & Psychiatry, 73, i34-i41 Matsumoto M ,Okada E,etal,2013,Tandem age-

related Lumber and Cervical intervertebral disc change in asymptomatic subject, Eur Spine J(2013) 22:708- 713

MARK A.BROWN,RICHARD C.SEMELKA,2009,MRI Basic principles and Application,3rd edition,Chapter 14,202 Stephanie Ryan,etal,2004,Anatomy for Diagnostic Imaging,The Spinal Column,2nd edition,Chapter3,85-95

Stephen M.foreman and Arthur C.croft ,Whiplash injuries:The lumbar dimensions measuring ,third edition,USA, 2007,265

W.Brinji,etal,2014,Systematic Literature Review of Imaging Features of spinal Degeneration in Asymptomatic Population, November 27, 2014 as 10.3174/ajnr.A4173

Yassirelhassan ,etal 2014,sagittal diameter of the lumbosacral spinal canal in normal (asymptomatic) adult Sudanese population, sudan medical monitor ,volume 9,4,page 153-158

YM Elhassan, QM Ali, AO Ahmed. Sagittal diameter of the lumbosacral spinal canal in normal (asymptomatic) adult Sudanese population 2014. Sudan Med Monit 2014;9:153-8

Appendix 1

Data collection sheets

No	gender	Age	weight	L1canal diameter	L2canal diameter	L3canal diameter	L4canal diameter	L5canal diameter	S1canal diameter
1									
2									
3									
4									
5									
6									
7									
8									
9									
10									
.... 200									

Appendix 2

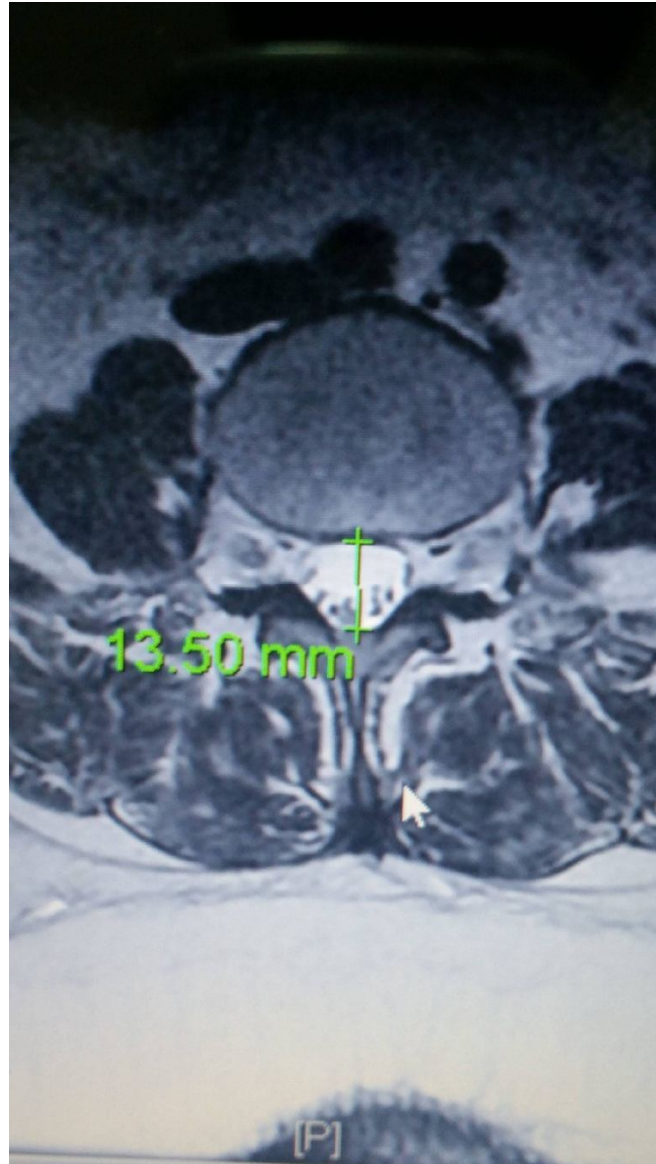
Measurement of AP diameter in axial T2 image in male



30 yrs , male , Axial T2 weighted image FSE , slice thickness 4.00 mm shows normal spinal canal (15.88 mm) , long TR , long TE .

Appendix 2

Measurement of AP diameter in axial T2 image in female



43 yrs , female , Axial T2 weighted image FSE , slice thickness 4.00mm , shows normal spinal canal (13.50 mm) , long TR ,long TE .