

ملحق رقم (1) توليد أزمان ما بين الوصول

No	Time between arrive	Frequency	Probability	Cumulative probability	Random assign	Random no	interarrive_time
1	5	2	0.067	0.067	0.0000-0.0670	0.217	45
2	10	1	0.033	0.1	0.0671-0.1000	0.153	30
3	25	1	0.033	0.133	0.1001-0.1330	0.287	55
4	30	1	0.033	0.166	0.1331-0.1660	0.385	60
5	40	1	0.033	0.199	0.1661-0.1990	0.589	145
6	45	1	0.033	0.232	0.1991-0.2320	0.169	40
7	50	1	0.033	0.265	0.2321-0.2650	0.901	235
8	55	2	0.067	0.332	0.2651-0.3320	0.463	95
9	60	1	0.033	0.365	0.3321-0.3650	0.244	50
10	90	2	0.067	0.432	0.3651-0.4320	0.89	225
11	95	2	0.067	0.499	0.4321-0.4990	0.909	235
12	115	2	0.067	0.566	0.4991-0.5660	0.63	160
13	145	1	0.033	0.599	0.5661-0.5990	0.716	180
14	160	2	0.067	0.666	0.5991-0.6660	0.838	195
15	165	1	0.033	0.699	0.6661-0.6990	0.77	190
16	180	1	0.033	0.732	0.6991-0.7320	0.859	210
17	185	1	0.033	0.765	0.7321-0.7650	0.685	165
18	190	1	0.033	0.798	0.7651-0.7980	0.539	105
19	195	1	0.033	0.831	0.7981-0.8310	0.738	185
20	210	1	0.033	0.864	0.8311-0.8640	0.795	190
21	225	1	0.033	0.897	0.8641-0.8970	0.549	105
22	235	1	0.033	0.93	0.8971-0.9300	0.353	60
23	255	1	0.033	0.963	0.9301-0.9630	0.767	190
24	265	1	0.033	0.996	0.9631-0.9960	0.437	95
25						0.899	235
26						0.557	145
27						0.403	90
28						0.502	115
29						0.4	90
30						0.29	55

ملحق رقم (2) توليد أزمان خدمة مرحلة أخذ التذكرة

No	service	Frequency	Probability	Cumulative probability	Random assign	Random no	Service Time
1	25	2	0.067	0.067	0.0000-0.0670	0.732	60
2	30	4	0.133	0.2	0.0671-0.2000	0.542	50
3	35	4	0.133	0.333	0.2001-0.3330	0.151	30
4	40	2	0.067	0.4	0.3331-0.4000	0.914	90
5	45	4	0.133	0.533	0.4001-0.5330	0.741	65
6	50	3	0.1	0.633	0.5331-0.6330	0.943	100
7	55	1	0.033	0.666	0.6331-0.6660	0.784	70
8	60	2	0.067	0.733	0.6661-0.7330	0.242	35
9	65	1	0.033	0.766	0.7331-0.7660	0.579	50
10	70	2	0.067	0.833	0.7661-0.8330	0.562	50
11	75	1	0.033	0.866	0.8331-0.8660	0.404	45
12	85	1	0.033	0.899	0.8661-0.8990	0.614	50
13	90	1	0.033	0.932	0.8991-0.9320	0.048	25
14	100	1	0.033	0.965	0.9321-0.9650	0.072	30
15	110	1	0.033	0.998	0.9651-0.9980	0.758	65
16						0.895	85
17						0.248	35
18						0.445	45
19						0.868	85
20						0.904	90
21						0.186	30
22						0.773	65
23						0.042	25
24						0.573	50
25						0.674	55
26						0.95	100
27						0.315	35
28						0.205	35
29						0.96	100
30						0.198	30

ملحق رقم (3) محاكاة مرحلة أخذ التذكرة

No	Time between arrive	Arrive Time	Start time	Service time	End service	Time_in _Queue	Time in System	Idle Time
1	45	45	45	60	105	0	60	0
2	30	75	105	50	155	30	80	0
3	55	130	155	30	185	25	55	0
4	60	190	190	90	280	0	90	5
5	145	335	335	65	400	0	65	55
6	40	375	400	100	500	25	125	0
7	235	610	610	70	680	0	70	110
8	95	705	705	35	740	0	35	25
9	50	755	755	50	805	0	50	15
10	225	980	980	50	1030	0	50	175
11	235	1215	1215	45	1260	0	45	185
12	160	1375	1375	50	1425	0	50	115
13	180	1555	1555	25	1580	0	25	130
14	195	1750	1750	30	1780	0	30	170
15	190	1940	1940	65	2005	0	65	160
16	210	2150	2150	85	2235	0	85	145
17	165	2315	2315	35	2350	0	35	80
18	105	2420	2420	45	2465	0	45	70
19	185	2605	2605	85	2690	0	85	140
20	190	2795	2795	90	2885	0	90	105
21	105	2900	2900	30	2930	0	30	15
22	60	2960	2960	65	3025	0	65	30
23	190	3150	3150	25	3175	0	25	125
24	95	3245	3245	50	3295	0	50	70
25	235	3480	3480	55	3535	0	55	185
26	145	3625	3625	100	3725	0	100	90
27	90	3715	3725	35	3760	10	45	0
28	115	3830	3830	35	3865	0	35	70
29	90	3920	3920	100	4020	0	100	55
30	55	3975	4020	30	4050	45	75	0

ملحق رقم (4) توليد أزمان الخدمة لمرحلة أخذ الصورة

No	service	Frequency	Probability	Cumulative probability	Random assign	Random no	Service Time
1	20	3	0.1	0.1	0.0000-0.1000	0.259	25
2	25	6	0.2	0.3	0.1001-0.3000	0.236	25
3	30	5	0.167	0.467	0.3001-0.4670	0.978	120
4	35	2	0.067	0.534	0.4671-0.5340	0.777	50
5	40	5	0.167	0.701	0.5341-0.7010	0.705	40
6	50	4	0.133	0.834	0.7011-0.8340	0.733	50
7	60	2	0.067	0.901	0.8341-0.9010	0.694	40
8	70	1	0.033	0.934	0.9011-0.9340	0.227	25
9	100	1	0.033	0.967	0.9341-0.9670	0.869	60
10	120	1	0.033	1	0.9671-0.1000	0.084	20
11						0.518	35
12						0.919	70
13						0.137	25
14						0.158	25
15						0.273	25
16						0.693	40
17						0.89	60
18						0.615	40
19						0.201	25
20						0.276	25
21						0.201	25
22						0.3	25
23						0.483	35
24						0.923	70
25						0.839	60
26						0.766	50
27						0.514	35
28						0.125	25
29						0.251	25
30						0.779	50

ملحق رقم (5) محاكاة مرحلة أخذ الصورة

No	Arrive Time	Start time	Service time	End service	Time_in_Queue	Time_in System	Idle Time
1	105	105	25	130	0	25	0
2	155	155	25	180	0	25	25
3	185	185	120	305	0	120	5
4	280	305	50	355	25	50	0
5	400	400	40	440	0	40	45
6	500	500	50	550	0	50	60
7	680	680	40	720	0	40	130
8	740	740	25	765	0	25	20
9	805	805	60	865	0	60	40
10	1030	1030	20	1050	0	20	165
11	1260	1260	35	1295	0	35	210
12	1425	1425	70	1495	0	70	130
13	1580	1580	25	1605	0	25	85
14	1780	1780	25	1805	0	25	175
15	2005	2005	25	2030	0	25	200
16	2235	2235	40	2275	0	40	205
17	2350	2350	60	2410	0	60	75
18	2465	2465	40	2505	0	40	55
19	2690	2690	25	2715	0	25	185
20	2885	2885	25	2910	0	25	170
21	2930	2930	25	2955	0	25	20
22	3025	3025	25	3050	0	25	70
23	3175	3175	35	3210	0	35	125
24	3295	3295	70	3365	0	70	85
25	3535	3535	60	3595	0	60	170
26	3725	3725	50	3775	0	50	130
27	3760	3775	35	3810	15	35	0
28	3865	3865	25	3890	0	25	55
29	4020	4020	25	4045	0	25	130
30	4050	4050	50	4100	0	50	5

ملحق رقم (6) توليد أزمان الخدمة لمرحلة أخذ البصمة

No	Service	Frequency	Probability	Cumulative probability	Random assign	Random no	Service time
1	20	1	0.033	0.033	0.0000-0.0330	0.591	90
2	40	1	0.033	0.066	0.0331-0.0660	0.556	90
3	45	2	0.067	0.133	0.0661-0.1330	0.912	135
4	55	1	0.033	0.166	0.1331-0.1660	0.554	90
5	65	3	0.1	0.266	0.1661-0.2660	0.355	75
6	70	2	0.067	0.333	0.2661-0.3330	0.985	170
7	75	1	0.033	0.366	0.3331-0.3660	0.15	55
8	80	4	0.133	0.499	0.3661-0.4990	0.546	90
9	85	1	0.033	0.532	0.4991-0.5320	0.879	125
10	90	2	0.067	0.599	0.5321-0.5990	0.64	95
11	95	2	0.067	0.666	0.5991-0.6660	0.866	125
12	100	3	0.1	0.766	0.6661-0.7660	0.992	135
13	110	1	0.033	0.799	0.7661-0.7990	0.939	170
14	120	1	0.033	0.832	0.7991-0.8320	0.48	80
15	125	2	0.067	0.899	0.8321-0.8990	0.825	120
16	135	1	0.033	0.932	0.8991-0.9320	0.439	80
17	170	2	0.067	0.999	0.9321-0.9990	0.528	85
18						0.245	65
19						0.047	40
20						0.025	20
21						0.535	90
22						0.296	70
23						0.886	125
24						0.534	90
25						0.768	110
26						0.692	100
27						0.205	65
28						0.515	85
29						0.779	110
30						0.078	45

ملحق رقم (7) محاكاة مرحلة البصمة

No	Arrive_Time	Start_time	Service_time	End_service	Time_in_Queue	Time_in System	Idl Time
1	130	130	90	220	0	90	0
2	180	220	90	310	40	130	0
3	305	310	135	445	5	140	0
4	355	445	90	535	90	180	0
5	440	535	75	610	95	170	0
6	550	610	170	780	60	230	0
7	720	780	55	835	60	115	0
8	765	835	90	925	70	160	0
9	865	925	125	1050	60	185	0
10	1050	1050	95	1145	0	95	0
11	1295	1295	125	1420	0	125	140
12	1495	1495	135	1630	0	135	75
13	1605	1630	170	1800	25	195	0
14	1805	1805	80	1885	0	80	5
15	2030	2030	120	2150	0	120	145
16	2275	2275	80	2355	0	80	125
17	2410	2410	85	2495	0	85	55
18	2505	2505	65	2570	0	65	10
19	2715	2715	40	2755	0	40	145
20	2910	2910	20	2930	0	20	20
21	2955	2955	90	3045	0	90	25
22	3050	3050	70	3120	0	70	5
23	3210	3210	125	3335	0	125	90
24	3365	3365	90	3455	0	90	30
25	3595	3595	110	3705	0	110	140
26	3775	3775	100	3875	0	100	70
27	3810	3875	65	3940	65	130	0
28	3890	3940	85	4025	50	135	0
29	4045	4045	110	4155	0	110	20
30	4100	4155	45	4200	55	100	0

ملحق رقم (8) توليد أزمان الخدمة لمرحلة إدخال البيانات

No	Service	Frequency	Probability	Cumulative probability	Random assign	Random no	Service time
1	105	1	0.033	0.033	0.0000-0.0330	0.509	330
2	150	1	0.033	0.066	0.0331-0.0660	0.308	280
3	170	1	0.033	0.099	0.0661-0.0990	0.42	295
4	190	1	0.033	0.132	0.0991-0.1320	0.668	455
5	205	1	0.033	0.165	0.1321-0.1650	0.78	545
6	225	1	0.033	0.198	0.1651-0.1980	0.733	520
7	230	1	0.033	0.231	0.1981-0.2310	0.048	150
8	265	1	0.033	0.264	0.2311-0.2640	0.39	290
9	270	1	0.033	0.297	0.2641-0.2970	0.475	325
10	280	1	0.033	0.33	0.2971-0.3300	0.772	545
11	285	1	0.033	0.363	0.3301-0.3630	0.81	545
12	290	1	0.033	0.396	0.3631-0.3960	0.431	320
13	295	1	0.033	0.429	0.3961-0.4290	0.008	105
14	320	1	0.033	0.462	0.4291-0.4620	0.456	320
15	325	1	0.033	0.495	0.4621-0.4950	0.447	320
16	330	1	0.033	0.528	0.4951-0.5280	0.229	230
17	340	1	0.033	0.561	0.5281-0.5610	0.916	630
18	350	1	0.033	0.594	0.5611-0.5940	0.546	340
19	415	1	0.033	0.627	0.5941-0.6270	0.412	295
20	455	2	0.067	0.694	0.6271-0.6940	0.135	205
21	475	1	0.033	0.727	0.6941-0.7270	0.253	265
22	520	1	0.033	0.76	0.7271-0.7600	0.471	325
23	545	2	0.067	0.827	0.7601-0.8270	0.331	285
24	565	1	0.033	0.86	0.8271-0.8600	0.912	630
25	585	1	0.033	0.893	0.8601-0.8930	0.897	630
26	630	1	0.033	0.926	0.8931-0.9260	0.831	565
27	635	1	0.033	0.959	0.9261-0.9590	0.395	290
28						0.32	280
29						0.408	295
30						0.622	415

ملحق رقم (9) محاكاة مرحلة ادخال البيانات

No	Arrive Time	Start time	Service time	End service	Time_in_Queue	Time_in System	Idle Time
1	220	220	330	550	0	330	0
2	310	550	280	830	240	520	0
3	445	830	295	1125	385	680	0
4	535	1125	455	1580	590	1045	0
5	610	1580	545	2125	970	1515	0
6	780	2125	520	2645	1345	1865	0
7	835	2645	150	2795	1810	1960	0
8	925	2795	290	3085	1870	2160	0
9	1050	3085	325	3410	2035	2360	0
10	1145	3410	545	3955	2265	2810	0
11	1420	3955	545	4500	2535	3080	0
12	1630	4500	320	4820	2870	3190	0
13	1800	4820	105	4925	3020	3125	0
14	1885	4925	320	5245	3040	3360	0
15	2150	5245	320	5565	3095	3415	0
16	2355	5565	230	5795	3210	3440	0
17	2495	5795	630	6425	3300	3930	0
18	2570	6425	340	6765	3855	4195	0
19	2755	6765	295	7060	4010	4305	0
20	2930	7060	205	7265	4130	4335	0
21	3045	7265	265	7530	4220	4485	0
22	3120	7530	325	7855	4410	4735	0
23	3335	7855	285	8140	4520	4805	0
24	3455	8140	630	8770	4685	5315	0
25	3705	8770	630	9400	5065	5695	0
26	3875	9400	565	9965	5525	6090	0
27	3940	9965	290	10255	6025	6315	0
28	4025	10255	280	10535	6230	6510	0
29	4155	10535	295	10830	6380	6675	0
30	4200	10830	415	11245	6630	7045	0

ملحق رقم (10) توليد أزمان خدمة مرحلة ارشفة البيانات

No	Service	Frequency	Probability	Cumulative probability	Random assign	Random no	Service time
1	45	2	0.067	0.067	0.0000-0.0670	0.488	85
2	50	2	0.067	0.134	0.0671-0.1340	0.896	140
3	55	3	0.1	0.234	0.1341-0.2340	0.074	50
4	60	4	0.133	0.367	0.2341-0.3670	0.445	85
5	70	2	0.067	0.434	0.3671-0.4340	0.756	115
6	85	2	0.067	0.501	0.4341-0.5010	0.014	55
7	90	1	0.033	0.534	0.5011-0.5340	0.766	115
8	95	1	0.033	0.567	0.5341-0.5670	0.025	60
9	105	3	0.1	0.667	0.5671-0.6670	0.159	55
10	115	3	0.1	0.767	0.6671-0.7670	0.773	115
11	120	1	0.033	0.8	0.7671-0.8000	0.088	50
12	125	1	0.033	0.833	0.8001-0.8330	0.245	60
13	130	1	0.033	0.866	0.8331-0.8660	0.565	95
14	140	1	0.033	0.899	0.8661-0.8990	0.471	85
15	160	1	0.033	0.932	0.8990-0.9320	0.239	60
16	175	1	0.033	0.965	0.9321-0.9650	0.532	90
17	180	1	0.033	0.998	0.9651-0.9980	0.841	130
18						0.229	55
19						0.071	50
20						0.741	115
21						0.158	55
22						0.615	105
23						0.884	140
24						0.916	160
25						0.574	105
26						0.123	50
27						0.408	70
28						0.286	60
29						0.549	95
30						0.26	60

ملحق رقم (11) محاكاة مرحلة ارشفة البيانات

No	Arrive Time	Start time	Service time	End service	Time_in_Queue	Time_in System	Idle Time
1	550	550	85	635	0	85	0
2	830	830	140	970	0	140	195
3	1125	1125	50	1175	0	50	155
4	1580	1580	85	1665	0	85	405
5	2125	2125	115	2240	0	115	460
6	2645	2645	55	2700	0	55	405
7	2795	2795	115	2910	0	115	95
8	3085	3085	60	3145	0	60	175
9	3410	3410	55	3465	0	55	265
10	3955	3955	115	4070	0	115	490
11	4500	4500	50	4550	0	50	430
12	4820	4820	60	4880	0	60	270
13	4925	4925	95	5020	0	95	45
14	5245	5245	85	5330	0	85	225
15	5565	5565	60	5625	0	60	235
16	5795	5795	90	5885	0	90	170
17	6425	6425	130	6555	0	130	540
18	6765	6765	55	6820	0	55	210
19	7060	7060	50	7110	0	50	240
20	7265	7265	115	7380	0	115	155
21	7530	7530	55	7585	0	55	150
22	7855	7855	105	7960	0	105	270
23	8140	8140	140	8280	0	140	180
24	8770	8770	160	8930	0	160	490
25	9400	9400	105	9505	0	105	470
26	9965	9965	50	10015	0	50	460
27	10255	10255	70	10325	0	70	240
28	10535	10535	60	10595	0	60	210
29	10830	10830	95	10925	0	95	235
30	11245	11245	60	11305	0	60	320

ملحق رقم (12) توليد أزمان الخدمة لمرحلة التحري

No	Service	Frequency	Probability	Cumulative probability	Random assign	Random no	Service time
1	35	2	0.067	0.067	0.0000-0.0670	0.36	80
2	40	1	0.033	0.1	0.0671-0.1000	0.698	135
3	50	4	0.133	0.233	0.1001-0.2330	0.587	130
4	60	3	0.1	0.333	0.2331-0.3330	0.156	50
5	80	1	0.033	0.366	0.3331-0.3660	0.85	185
6	85	1	0.033	0.399	0.3661-0.3990	0.23	50
7	95	2	0.067	0.466	0.3991-0.4660	0.841	185
8	100	1	0.033	0.499	0.4661-0.4990	0.35	80
9	125	1	0.033	0.532	0.4991-0.5320	0.225	50
10	130	3	0.1	0.632	0.5321-0.6320	0.577	130
11	135	2	0.067	0.699	0.6321-0.6990	0.619	130
12	145	2	0.067	0.766	0.6991-0.7660	0.006	35
13	155	1	0.033	0.799	0.7661-0.7990	0.137	50
14	160	1	0.033	0.832	0.7991-0.8320	0.822	160
15	185	3	0.1	0.932	0.8321-0.9320	0.149	50
16	240	1	0.033	0.965	0.9321-0.9650	0.828	160
17	245	1	0.033	0.998	0.9651-0.9980	0.974	245
18						0.204	50
19						0.496	100
20						0.895	185
21						0.677	135
22						0.751	145
23						0.505	125
24						0.208	50
25						0.38	85
26						0.31	60
27						0.841	185
28						0.394	85
29						0.116	116
30						0.859	160

ملحق رقم (13) محاكاة مرحلة التحري

No	Arrive Time	Start time	Service time	End service	Time_in_Queue	Time_in System	Idle Time
1	635	635	80	715	0	80	0
2	970	970	135	1105	0	135	255
3	1175	1175	130	1305	0	130	70
4	1665	1665	50	1715	0	50	360
5	2240	2240	185	2425	0	185	525
6	2700	2700	50	2750	0	50	275
7	2910	2910	185	3095	0	185	160
8	3145	3145	80	3225	0	80	50
9	3465	3465	50	3515	0	50	240
10	4070	4070	130	4200	0	130	555
11	4550	4550	130	4680	0	130	350
12	4880	4880	35	4915	0	35	200
13	5020	5020	50	5070	0	50	105
14	5330	5330	160	5490	0	160	260
15	5625	5625	50	5675	0	50	135
16	5885	5885	160	6045	0	160	210
17	6555	6555	245	6800	0	245	510
18	6820	6820	50	6870	0	50	20
19	7110	7110	100	7210	0	100	240
20	7380	7380	185	7565	0	185	170
21	7585	7585	135	7720	0	135	20
22	7960	7960	145	8105	0	145	240
23	8280	8280	125	8405	0	125	175
24	8930	8930	50	8980	0	50	525
25	9505	9505	85	9590	0	85	525
26	10015	10015	60	10075	0	60	425
27	10325	10325	185	10510	0	185	250
28	10595	10595	85	10680	0	85	85
29	10925	10925	116	11041	0	116	245
30	11305	11305	160	11465	0	160	264

ملحق رقم (14) توليد أزمان الخدمة لمرحلة التصديق

No	Service	Frequency	Probability	Cumulative probability	Random assign	Random no	Service time
1	200	1	0.033	0.033	0.0000-0.0330	0.689	55
2	180	1	0.033	0.066	0.0331-0.0660	0.967	30
3	170	2	0.067	0.133	0.0661-0.1330	0.497	100
4	165	1	0.033	0.166	0.1331-0.1660	0.301	115
5	160	1	0.033	0.199	0.1661-0.1990	0.957	40
6	150	1	0.033	0.232	0.1991-0.2320	0.988	30
7	130	1	0.033	0.265	0.2321-0.2650	0.263	130
8	120	1	0.033	0.298	0.2651-0.2980	0.772	55
9	115	1	0.033	0.331	0.2981-0.3310	0.364	110
10	110	1	0.033	0.364	0.3311-0.3640	0.056	180
11	105	2	0.067	0.431	0.3641-0.4310	0.69	55
12	100	3	0.1	0.531	0.4311-0.5310	0.641	55
13	95	2	0.067	0.598	0.5311-0.5980	0.649	65
14	80	1	0.033	0.631	0.5981-0.6310	0.86	45
15	65	1	0.033	0.664	0.6311-0.6640	0.814	50
16	55	4	0.133	0.797	0.6641-0.7970	0.249	130
17	50	1	0.033	0.83	0.7971-0.8300	0.957	30
18	45	1	0.033	0.863	0.8301-0.8630	0.1	170
19	40	3	0.1	0.963	0.8631-0.9630	0.312	115
20	30	1	0.033	0.996	0.9631-0.9960	0.143	165
21						0.634	65
22						0.707	55
23						0.839	45
24						0.21	150
25						0.522	100
26						0.855	45
27						0.209	150
28						0.355	110
29						0.509	100
30						0.606	80

ملحق رقم (15) محاكاة مرحلة التصديق

No	Arrive Time	Start time	Service time	End service	Time_in_Queue	Time_in System	Idle Time
1	715	715	55	770	0	55	0
2	1105	1105	30	1135	0	30	335
3	1305	1305	100	1405	0	100	170
4	1715	1715	115	1830	0	115	310
5	2425	2425	40	2465	0	40	595
6	2750	2750	30	2780	0	30	285
7	3095	3095	130	3225	0	130	315
8	3225	3225	55	3280	0	55	0
9	3515	3515	110	3625	0	110	235
10	4200	4200	180	4380	0	180	575
11	4680	4680	55	4735	0	55	300
12	4915	4915	55	4970	0	55	180
13	5070	5070	65	5135	0	65	100
14	5490	5490	45	5535	0	45	355
15	5675	5675	50	5725	0	50	140
16	6045	6045	130	6175	0	130	320
17	6800	6800	30	6830	0	30	625
18	6870	6870	170	7040	0	170	40
19	7210	7210	115	7325	0	115	170
20	7565	7565	165	7730	0	165	240
21	7720	7730	65	7795	10	75	0
22	8105	8105	55	8160	0	55	310
23	8405	8405	45	8450	0	45	245
24	8980	8980	150	9130	0	150	530
25	9590	9590	100	9690	0	100	460
26	10075	10075	45	10120	0	45	385
27	10510	10510	150	10660	0	150	390
28	10680	10680	110	10790	0	110	20
29	11041	11041	100	11141	0	100	251
30	11465	11465	80	11545	0	80	324

ملحق رقم (16) توليد أزمان الخدمة لمرحلة تسايم شهادة القيد المدني

No	Service	Frequency	Probability	Cumulative probability	Random assign	Random no	Service time
1	30	3	0.1	0.1	0.0000-0.1000	0.23	35
2	35	3	0.1	0.2	0.1001-0.2000	0.749	65
3	40	2	0.0667	0.267	0.2001-0.2670	0.386	45
4	45	3	0.1	0.367	0.2671-0.3670	0.046	30
5	50	2	0.0667	0.433	0.3671-0.4330	0.943	80
6	55	2	0.0667	0.5	0.4331-0.5000	0.296	45
7	60	5	0.1667	0.667	0.5001-0.6670	0.254	40
8	65	3	0.1	0.767	0.6671-0.7670	0.663	60
9	70	1	0.0333	0.8	0.7671-0.8000	0.961	80
10	75	3	0.1	0.9	0.8001-0.9000	0.91	80
11	80	2	0.0667	0.967	0.9001-0.9670	0.553	60
12	90	1	0.0333	1	0.9671-1.0000	0.927	80
13						0.111	35
14						0.712	65
15						0.471	55
16						0.639	60
17						0.398	50
18						0.435	55
19						0.957	80
20						0.832	75
21						0.189	35
22						0.206	40
23						0.371	45
24						0.474	55
25						0.16	35
26						0.135	35
27						0.356	45
28						0.918	80
29						0.415	50
30						0.207	40

ملحق رقم (17) محاكاة مرحلة تسليم شهادة القيد المدني

No	Arrive Time	Start time	Service time	End service	Time in Queue	Time in System	Idle Time
1	770	770	35	805	0	35	0
2	1135	1135	65	1200	0	65	330
3	1405	1405	45	1450	0	45	205
4	1830	1830	30	1860	0	30	380
5	2465	2465	80	2545	0	80	605
6	2780	2780	45	2825	0	45	235
7	3225	3225	40	3265	0	40	400
8	3280	3280	60	3340	0	60	15
9	3625	3625	80	3705	0	80	285
10	4380	4380	80	4460	0	80	675
11	4735	4735	60	4795	0	60	275
12	4970	4970	80	5050	0	80	175
13	5135	5135	35	5170	0	35	85
14	5535	5535	65	5600	0	65	365
15	5725	5725	55	5780	0	55	125
16	6175	6175	60	6235	0	60	395
17	6830	6830	50	6880	0	50	595
18	7040	7040	55	7095	0	55	160
19	7325	7325	80	7405	0	80	230
20	7730	7730	75	7805	0	75	325
21	7795	7805	35	7840	10	45	0
22	8160	8160	40	8200	0	40	320
23	8450	8450	45	8495	0	45	250
24	9130	9130	55	9185	0	55	635
25	9690	9690	35	9725	0	35	505
26	10120	10120	35	10155	0	35	395
27	10660	10660	45	10705	0	45	505
28	10790	10790	80	10870	0	80	85
29	11141	11141	50	11191	0	50	271
30	11545	11545	40	11585	0	40	354

المحاكاة حاسوبياً

ملحق رقم (1.18): تشغيل النموذج بزمن 8 ساعات

7:19:34PM

Category Overview

February 6, 2012

Values Across All Replications

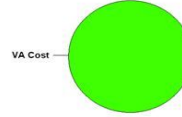
Civil Registration Center

Replications: 4 Time Units: Minutes

Key Performance Indicators

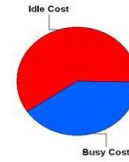
All Entities

	Average
Non-Value Added Cost	0
Other Cost	0
Transfer Cost	0
Value Added Cost	309
Wait Cost	0
Total Cost	309



All Resources

	Average
Busy Cost	309 *
Idle Cost	458
Usage Cost	0
Total Cost	767



* these costs are included in Entity Costs above.

System

	Average
Total Cost	767
Number Out	79

ملحق رقم (2.18): نتائج تشغيل النموذج بـ 8 ساعات

7:19:34PM

Category Overview

February 6, 2012

Values Across All Replications

Civil Registration Center

Replications: 4 Time Units: Minutes

Entity

Time

VA Time	Average	Half Width	Minimum Average	Maximum Average	Minimum Value	Maximum Value
customer	14.8620	0.50	14.5178	15.2649	8.5016	22.0670
NVA Time	Average	Half Width	Minimum Average	Maximum Average	Minimum Value	Maximum Value
customer	0.00	0.00	0.00	0.00	0.00	0.00
Wait Time	Average	Half Width	Minimum Average	Maximum Average	Minimum Value	Maximum Value
customer	146.90	15.30	136.58	159.51	0.00	319.81
Transfer Time	Average	Half Width	Minimum Average	Maximum Average	Minimum Value	Maximum Value
customer	0.00	0.00	0.00	0.00	0.00	0.00
Other Time	Average	Half Width	Minimum Average	Maximum Average	Minimum Value	Maximum Value
customer	0.00	0.00	0.00	0.00	0.00	0.00
Total Time	Average	Half Width	Minimum Average	Maximum Average	Minimum Value	Maximum Value
customer	161.76	15.71	151.34	174.77	17.1493	333.09

Cost

VA Cost	Average	Half Width	Minimum Average	Maximum Average	Minimum Value	Maximum Value
customer	2.9724	0.10	2.9036	3.0530	1.7003	4.4134
NVA Cost	Average	Half Width	Minimum Average	Maximum Average	Minimum Value	Maximum Value
customer	0.00	0.00	0.00	0.00	0.00	0.00
Wait Cost	Average	Half Width	Minimum Average	Maximum Average	Minimum Value	Maximum Value
customer	0.00	0.00	0.00	0.00	0.00	0.00
Other Cost	Average	Half Width	Minimum Average	Maximum Average	Minimum Value	Maximum Value
customer	0.00	0.00	0.00	0.00	0.00	0.00

ملحق رقم (3.18): نتائج تشغيل النموذج بـ 8 ساعات

7:19:34PM

Category Overview

February 6, 2012

Values Across All Replications

Civil Registration Center

Replications: 4 Time Units: Minutes

Entity

Cost

Transfer Cost	Average	Half Width	Minimum Average	Maximum Average	Minimum Value	Maximum Value
customer	0.00	0.00	0.00	0.00	0.00	0.00

Total Cost	Average	Half Width	Minimum Average	Maximum Average	Minimum Value	Maximum Value
customer	2.9724	0.10	2.9036	3.0530	1.7003	4.4134

Other

Number In	Average	Half Width	Minimum Average	Maximum Average
customer	198.25	5.57	193.00	200.00

Number Out	Average	Half Width	Minimum Average	Maximum Average
customer	78.5000	4.00	76.0000	82.0000

WIP	Average	Half Width	Minimum Average	Maximum Average	Minimum Value	Maximum Value
customer	68.0318	14.75	60.3177	81.3410	0.00	135.00

ملحق رقم (4.18): نتائج تشغيل النموذج بـ 8 ساعات

7:19:34PM

Category Overview

February 6, 2012

Values Across All Replications

Civil Registration Center

Replications: 4 Time Units: Minutes

Process

Time per Entity

VA Time Per Entity	Average	Half Width	Minimum Average	Maximum Average	Minimum Value	Maximum Value
approval	1.6752	0.15	1.5725	1.8014	0.5005	3.3246
biodevice	1.4550	0.15	1.3355	1.5525	0.00	3.4500
Data_entry	5.9656	0.31	5.6937	6.1678	1.7838	10.5744
delevary	0.8396	0.05	0.7936	0.8636	0.4113	1.4995
invesment	1.7452	0.11	1.6837	1.8297	0.6354	4.0116
scanning data	1.5869	0.02	1.5750	1.6008	0.7503	2.9946
take_imag	0.6973	0.03	0.6820	0.7276	0.3336	2.6902
taken tackit	0.9424	0.06	0.9073	0.9796	0.4089	1.8386

Wait Time Per Entity	Average	Half Width	Minimum Average	Maximum Average	Minimum Value	Maximum Value
approval	0.05996919	0.07	0.01574888	0.1166	0.00	1.7429
biodevice	1.3445	1.05	0.4727	1.8757	0.00	9.0029
Data_entry	146.52	14.40	136.96	158.15	0.00	321.89
delevary	0.00707810	0.01	0.00	0.01593429	0.00	0.8412
invesment	0.05648654	0.05	0.02020846	0.08224809	0.00	2.3042
scanning data	0.00469185	0.01	0.00	0.01083604	0.00	0.4641
take_imag	0.0909	0.01	0.08253630	0.0982	0.00	2.1366
taken tackit	0.3733	0.05	0.3317	0.4015	0.00	3.8345

Total Time Per Entity	Average	Half Width	Minimum Average	Maximum Average	Minimum Value	Maximum Value
approval	1.7351	0.19	1.5882	1.8743	0.5005	4.6681
biodevice	2.7995	1.17	1.8083	3.3881	0.00	11.0305
Data_entry	152.48	14.58	142.97	164.32	7.8019	329.28
delevary	0.8467	0.06	0.7936	0.8757	0.4113	1.6694
invesment	1.8017	0.10	1.7305	1.8614	0.6354	4.3559
scanning data	1.5916	0.01	1.5829	1.6008	0.7503	2.9946
take_imag	0.7883	0.04	0.7744	0.8257	0.3336	3.5053
taken tackit	1.3158	0.05	1.2821	1.3517	0.4089	5.1247

Accumulated Time

ملحق رقم (5.18): نتائج تشغيل النموذج بـ 8 ساعات

7:19:34PM

Category Overview

February 6, 2012

Values Across All Replications

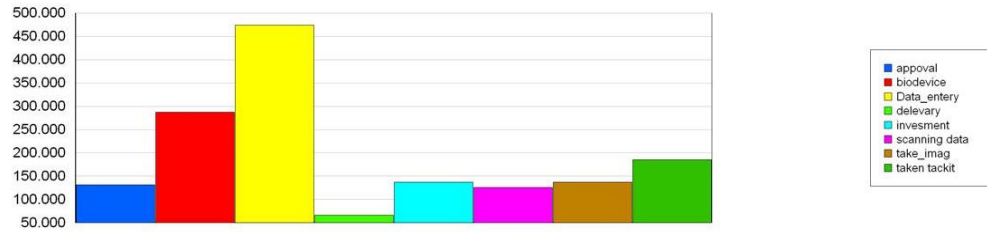
Civil Registration Center

Replications: 4 Time Units: Minutes

Process

Accumulated Time

Accum VA Time	Average	Half Width	Minimum Average	Maximum Average
approval	131.47	12.63	122.65	140.51
biodevice	286.99	40.62	251.08	310.50
Data_entry	473.89	1.91	472.57	474.92
delevary	65.9257	6.03	61.9020	70.5003
invesment	137.38	8.65	131.70	144.54
scanning data	125.74	6.20	121.66	130.95
take_imag	137.58	10.25	129.87	145.51
taken tackit	185.79	8.29	181.46	193.27



ملحق رقم (6.18): نتائج تشغيل النموذج بزمان 8 ساعات

7:19:34PM

Category Overview

February 6, 2012

Values Across All Replications

Civil Registration Center

Replications: 4 Time Units: Minutes

Process

Accumulated Time

Accum Wait Time	Average	Half Width	Minimum Average	Maximum Average
appoval	4.7769	5.87	1.2284	9.5608
biodevice	267.48	213.94	88.8695	375.14
Data_entery	11638.52	921.26	10819.94	12177.85
delevary	0.5618	1.06	0.00	1.3066
invesment	4.4513	3.87	1.5965	6.6779
scanning data	0.3815	0.72	0.00	0.8994
take_imag	17.9439	2.68	16.4812	19.6345
taken tackit	73.7574	12.24	62.6978	80.3097



ملحق رقم (7.18): نتائج تشغيل النموذج بـ 8 ساعات

7:19:34PM

Category Overview

February 6, 2012

Values Across All Replications

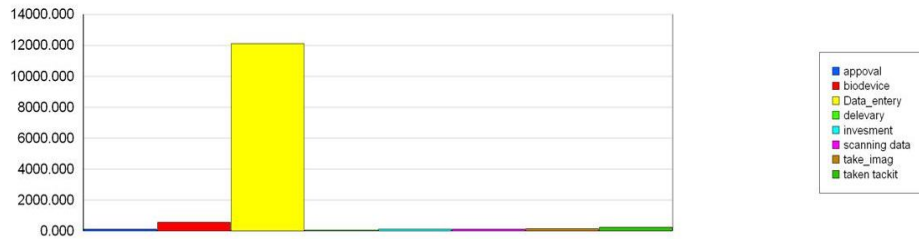
Civil Registration Center

Replications: 4 Time Units: Minutes

Process

Accumulated Time

Total Accum Time	Average	Half Width	Minimum Average	Maximum Average
approval	136.25	17.47	123.88	146.20
biodevice	554.47	249.05	339.95	677.62
Data_entery	12112.41	920.72	11294.84	12652.77
delevary	66.4876	6.67	61.9020	71.8069
invesment	141.83	7.91	134.98	146.14
scanning data	126.12	6.74	121.66	131.85
take_imag	155.52	12.22	146.35	165.15
taken tackit	259.55	15.37	247.84	270.34



Cost per Entity

VA Cost Per Entity	Average	Half Width	Minimum Average	Maximum Average	Minimum Value	Maximum Value
approval	0.3350	0.03	0.3145	0.3603	0.1001	0.6649
biodevice	0.2910	0.03	0.2671	0.3105	0.00	0.6900
Data_entery	1.1931	0.06	1.1387	1.2336	0.3568	2.1149
delevary	0.1679	0.01	0.1587	0.1727	0.08225148	0.2999
invesment	0.3490	0.02	0.3367	0.3659	0.1271	0.8023
scanning data	0.3174	0.00	0.3150	0.3202	0.1501	0.5989
take_imag	0.1395	0.01	0.1364	0.1455	0.06672951	0.5380
taken tackit	0.1885	0.01	0.1815	0.1959	0.08177746	0.3677

ملحق رقم (8.18): نتائج تشغيل النموذج بـ 8 ساعات

7:19:34PM

Category Overview

February 6, 2012

Values Across All Replications

Civil Registration Center

Replications: 4 Time Units: Minutes

Process

Cost per Entity

Wait Cost Per Entity	Average	Half Width	Minimum Average	Maximum Average	Minimum Value	Maximum Value
apposal	0.00	0.00	0.00	0.00	0.00	0.00
biodevice	0.00	0.00	0.00	0.00	0.00	0.00
Data_entery	0.00	0.00	0.00	0.00	0.00	0.00
delevary	0.00	0.00	0.00	0.00	0.00	0.00
invesment	0.00	0.00	0.00	0.00	0.00	0.00
scanning data	0.00	0.00	0.00	0.00	0.00	0.00
take_imag	0.00	0.00	0.00	0.00	0.00	0.00
taken tackit	0.00	0.00	0.00	0.00	0.00	0.00
Total Cost Per Entity	Average	Half Width	Minimum Average	Maximum Average	Minimum Value	Maximum Value
apposal	0.3350	0.03	0.3145	0.3603	0.1001	0.6649
biodevice	0.2910	0.03	0.2671	0.3105	0.00	0.6900
Data_entery	1.1931	0.06	1.1387	1.2336	0.3568	2.1149
delevary	0.1679	0.01	0.1587	0.1727	0.08225148	0.2999
invesment	0.3490	0.02	0.3367	0.3659	0.1271	0.8023
scanning data	0.3174	0.00	0.3150	0.3202	0.1501	0.5989
take_imag	0.1395	0.01	0.1364	0.1455	0.06672951	0.5380
taken tackit	0.1885	0.01	0.1815	0.1959	0.08177746	0.3677

Accumulated Cost

ملحق رقم (9.18): نتائج تشغيل النموذج بـ 8 ساعات

7:19:34PM

Category Overview

February 6, 2012

Values Across All Replications

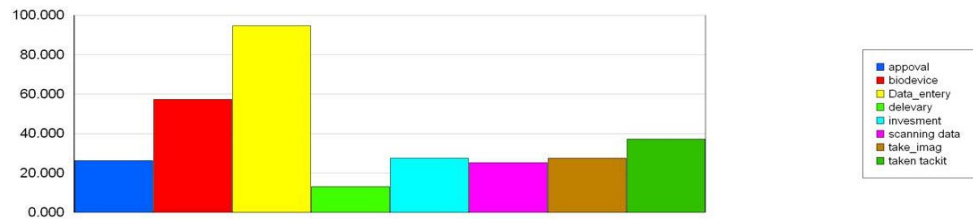
Civil Registration Center

Replications: 4 Time Units: Minutes

Process

Accumulated Cost

Accum VA Cost	Average	Half Width	Minimum Average	Maximum Average
approval	26.2947	2.53	24.5304	28.1026
biodevice	57.3972	8.12	50.2164	62.0994
Data_entery	94.7778	0.38	94.5150	94.9839
delevary	13.1851	1.21	12.3804	14.1001
invesment	27.4760	1.73	26.3400	28.9089
scanning data	25.1484	1.24	24.3326	26.1899
take_imag	27.5158	2.05	25.9745	29.1022
taken tackit	37.1580	1.66	36.2919	38.6545



Accum Wait Cost	Average	Half Width	Minimum Average	Maximum Average
approval	0.00	0.00	0.00	0.00
biodevice	0.00	0.00	0.00	0.00
Data_entery	0.00	0.00	0.00	0.00
delevary	0.00	0.00	0.00	0.00
invesment	0.00	0.00	0.00	0.00
scanning data	0.00	0.00	0.00	0.00
take_imag	0.00	0.00	0.00	0.00
taken tackit	0.00	0.00	0.00	0.00

ملحق رقم (10.18): نتائج تشغيل النموذج بزمن 8 ساعات

7:19:34PM

Category Overview

February 6, 2012

Values Across All Replications

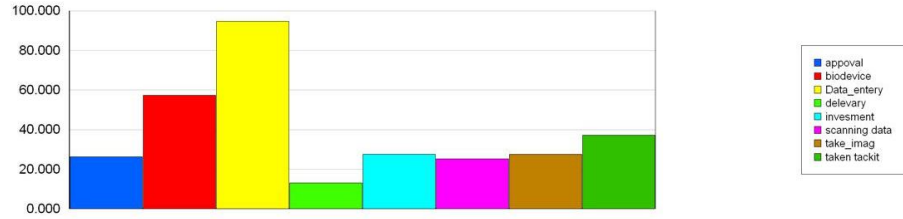
Civil Registration Center

Replications: 4 Time Units: Minutes

Process

Accumulated Cost

Total Accum Cost	Average	Half Width	Minimum Average	Maximum Average
approval	26.2947	2.53	24.5304	28.1026
biodevice	57.3972	8.12	50.2164	62.0994
Data_entry	94.7778	0.38	94.5150	94.9839
delevery	13.1851	1.21	12.3804	14.1001
invesment	27.4760	1.73	26.3400	28.9089
scanning data	25.1484	1.24	24.3326	26.1899
take_imag	27.5158	2.05	25.9745	29.1022
taken tackit	37.1580	1.66	36.2919	38.6545



Other

ملحق رقم (11.18): نتائج تشغيل النموذج بزمن 8 ساعات

7:19:34PM

Category Overview

February 6, 2012

Values Across All Replications

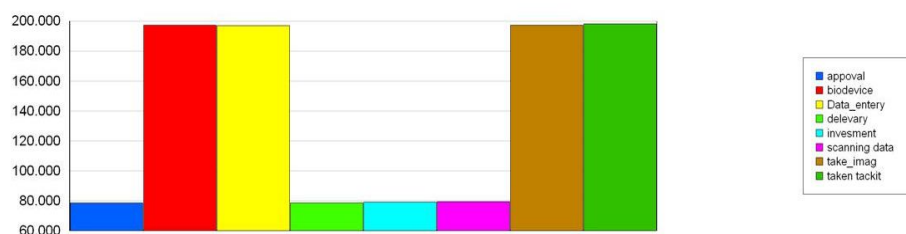
Civil Registration Center

Replications: 4 Time Units: Minutes

Process

Other

Number In	Average	Half Width	Minimum Average	Maximum Average
appoval	78.7500	3.98	76.0000	82.0000
biodevice	197.25	8.75	189.00	200.00
Data_entery	197.00	9.55	188.00	200.00
delevary	78.5000	4.00	76.0000	82.0000
invesment	79.2500	4.57	76.0000	83.0000
scanning data	79.5000	4.00	77.0000	83.0000
take_imag	197.25	8.75	189.00	200.00
taken tackit	198.25	5.57	193.00	200.00



Number Out	Average	Half Width	Minimum Average	Maximum Average
appoval	78.5000	4.00	76.0000	82.0000
biodevice	197.00	9.55	188.00	200.00
Data_entery	79.5000	4.00	77.0000	83.0000
delevary	78.5000	4.00	76.0000	82.0000
invesment	78.7500	3.98	76.0000	82.0000
scanning data	79.2500	4.57	76.0000	83.0000
take_imag	197.25	8.75	189.00	200.00
taken tackit	197.25	8.75	189.00	200.00

ملحق رقم (12.18): نتائج تشغيل النموذج بزمن 8 ساعات

7:19:34PM

Category Overview

February 6, 2012

Values Across All Replications

Civil Registration Center

Replications: 4 Time Units: Minutes

Queue

Time

Waiting Time	Average	Half Width	Minimum Average	Maximum Average	Minimum Value	Maximum Value
appoval.Queue	0.05973858	0.07	0.01574888	0.1166	0.00	1.7429
biodevice.Queue	1.3458	1.05	0.4779	1.8757	0.00	9.0029
Data_entry.Queue	148.36	14.74	138.70	160.33	0.00	327.83
delevary.Queue	0.00707810	0.01	0.00	0.01593429	0.00	0.8412
invesment.Queue	0.05610817	0.05	0.02020846	0.08224809	0.00	2.3042
scanning data.Queue	0.00469185	0.01	0.00	0.01083604	0.00	0.4641
take_imag.Queue	0.0909	0.01	0.08253630	0.0982	0.00	2.1366
taken tackit.Queue	0.3729	0.05	0.3300	0.4015	0.00	3.8345

Cost

Waiting Cost	Average	Half Width	Minimum Average	Maximum Average	Minimum Value	Maximum Value
appoval.Queue	0.00	0.00	0.00	0.00	0.00	0.00
biodevice.Queue	0.00	0.00	0.00	0.00	0.00	0.00
Data_entry.Queue	0.00	0.00	0.00	0.00	0.00	0.00
delevary.Queue	0.00	0.00	0.00	0.00	0.00	0.00
invesment.Queue	0.00	0.00	0.00	0.00	0.00	0.00
scanning data.Queue	0.00	0.00	0.00	0.00	0.00	0.00
take_imag.Queue	0.00	0.00	0.00	0.00	0.00	0.00
taken tackit.Queue	0.00	0.00	0.00	0.00	0.00	0.00

Other

Number Waiting	Average	Half Width	Minimum Average	Maximum Average	Minimum Value	Maximum Value
appoval.Queue	0.00995179	0.01	0.00255919	0.01991829	0.00	1.0000
biodevice.Queue	0.5580	0.44	0.1882	0.7815	0.00	6.0000
Data_entry.Queue	64.0326	14.36	56.7760	77.0881	0.00	132.00
delevary.Queue	0.00117049	0.00	0.00	0.00272211	0.00	1.0000
invesment.Queue	0.00927357	0.01	0.00332598	0.01391225	0.00	1.0000
scanning data.Queue	0.00079478	0.00	0.00	0.00187373	0.00	1.0000
take_imag.Queue	0.03738319	0.01	0.03433587	0.04090522	0.00	3.0000
taken tackit.Queue	0.1542	0.02	0.1330	0.1673	0.00	4.0000

ملحق رقم (13.18): نتائج تشغيل النموذج بزمن 8 ساعات

7:19:34PM

Category Overview

February 6, 2012

Values Across All Replications

Civil Registration Center

Replications: 4 Time Units: Minutes

Resource

Usage

Instantaneous Utilization	Average	Half Width	Minimum Average	Maximum Average	Minimum Value	Maximum Value
approval	0.2739	0.03	0.2555	0.2928	0.00	1.0000
bio devic	0.5979	0.08	0.5232	0.6469	0.00	1.0000
camra	0.2866	0.02	0.2706	0.3031	0.00	1.0000
certificate	0.1373	0.01	0.1290	0.1469	0.00	1.0000
dataentering	0.9935	0.00	0.9915	0.9944	0.00	1.0000
investigation	0.2888	0.02	0.2778	0.3011	0.00	1.0000
scanner	0.2625	0.01	0.2555	0.2728	0.00	1.0000
tackit device	0.3877	0.02	0.3780	0.4027	0.00	1.0000
Number Busy	Average	Half Width	Minimum Average	Maximum Average	Minimum Value	Maximum Value
approval	0.2739	0.03	0.2555	0.2928	0.00	1.0000
bio devic	0.5979	0.08	0.5232	0.6469	0.00	1.0000
camra	0.2866	0.02	0.2706	0.3031	0.00	1.0000
certificate	0.1373	0.01	0.1290	0.1469	0.00	1.0000
dataentering	0.9935	0.00	0.9915	0.9944	0.00	1.0000
investigation	0.2888	0.02	0.2778	0.3011	0.00	1.0000
scanner	0.2625	0.01	0.2555	0.2728	0.00	1.0000
tackit device	0.3877	0.02	0.3780	0.4027	0.00	1.0000
Number Scheduled	Average	Half Width	Minimum Average	Maximum Average	Minimum Value	Maximum Value
approval	1.0000	0.00	1.0000	1.0000	1.0000	1.0000
bio devic	1.0000	0.00	1.0000	1.0000	1.0000	1.0000
camra	1.0000	0.00	1.0000	1.0000	1.0000	1.0000
certificate	1.0000	0.00	1.0000	1.0000	1.0000	1.0000
dataentering	1.0000	0.00	1.0000	1.0000	1.0000	1.0000
investigation	1.0000	0.00	1.0000	1.0000	1.0000	1.0000
scanner	1.0000	0.00	1.0000	1.0000	1.0000	1.0000
tackit device	1.0000	0.00	1.0000	1.0000	1.0000	1.0000

ملحق رقم (14.18): نتائج تشغيل النموذج بزمن 8 ساعات

7:19:34PM

Category Overview

February 6, 2012

Values Across All Replications

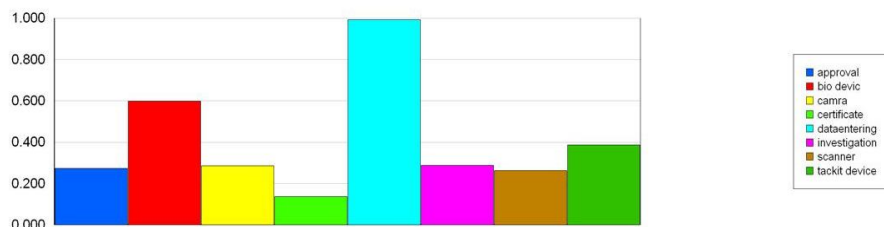
Civil Registration Center

Replications: 4 Time Units: Minutes

Resource

Usage

Scheduled Utilization	Average	Half Width	Minimum Average	Maximum Average
approval	0.2739	0.03	0.2555	0.2928
bio devic	0.5979	0.08	0.5232	0.6469
camra	0.2866	0.02	0.2706	0.3031
certificate	0.1373	0.01	0.1290	0.1469
dataentering	0.9935	0.00	0.9915	0.9944
investigation	0.2888	0.02	0.2778	0.3011
scanner	0.2625	0.01	0.2555	0.2728
tackit device	0.3877	0.02	0.3780	0.4027



ملحق رقم (15.18): نتائج تشغيل النموذج بزمن 8 ساعات

7:19:34PM

Category Overview

February 6, 2012

Values Across All Replications

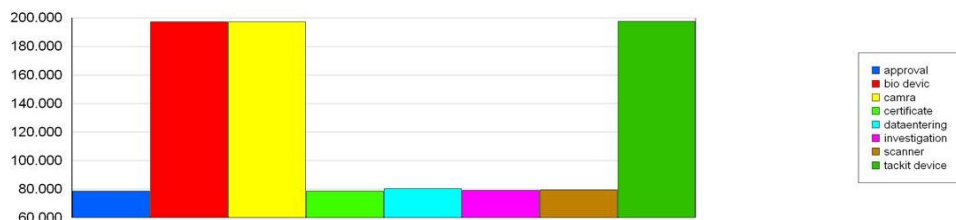
Civil Registration Center

Replications: 4 Time Units: Minutes

Resource

Usage

Total Number Seized	Average	Half Width	Minimum Average	Maximum Average
approval	78.7500	3.98	76.0000	82.0000
bio devic	197.25	8.75	189.00	200.00
camra	197.25	8.75	189.00	200.00
certificate	78.5000	4.00	76.0000	82.0000
dataentering	80.5000	4.00	78.0000	84.0000
investigation	79.2500	4.57	76.0000	83.0000
scanner	79.5000	4.00	77.0000	83.0000
tackit device	197.50	7.96	190.00	200.00



Cost

ملحق رقم (16.18): نتائج تشغيل النموذج بزمن 8 ساعات

7:19:34PM

Category Overview

February 6, 2012

Values Across All Replications

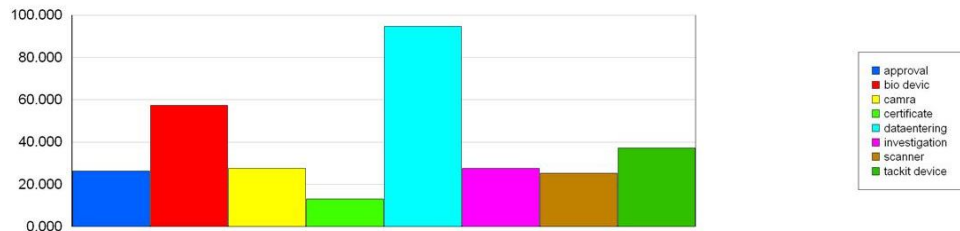
Civil Registration Center

Replications: 4 Time Units: Minutes

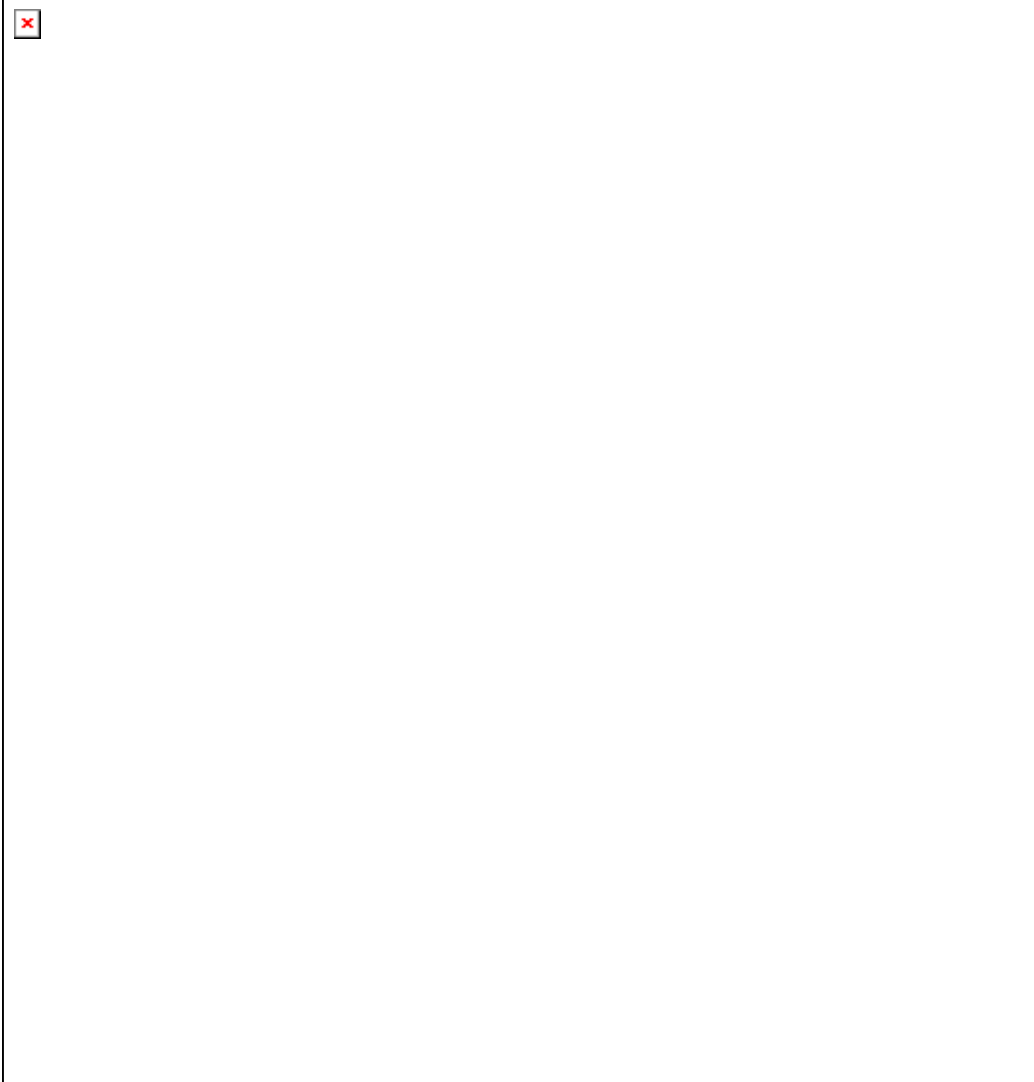
Resource

Cost

Busy Cost	Average	Half Width	Minimum Average	Maximum Average
approval	26.2947	2.53	24.5304	28.1026
bio devic	57.3972	8.12	50.2164	62.0994
camra	27.5158	2.05	25.9745	29.1022
certificate	13.1851	1.21	12.3804	14.1001
dataentering	94.7778	0.38	94.5150	94.9839
investigation	27.4760	1.73	26.3400	28.9089
scanner	25.1484	1.24	24.3326	26.1899
tackit device	37.1580	1.66	36.2919	38.6545



ملحق رقم (1.19): نتائج تشغيل النموذج بعد التعديل



ملحق رقم (2.19): نتائج تشغيل النموذج بعد التعديل

9:06:30PM

Category Overview

February 6, 2012

Values Across All Replications

Civil Registration Center

Replications: 4 Time Units: Minutes

Entity

Time

VA Time	Average	Half Width	Minimum Average	Maximum Average	Minimum Value	Maximum Value
customer	15.0908	0.17	14.9553	15.2106	7.3070	22.0205
NVA Time	Average	Half Width	Minimum Average	Maximum Average	Minimum Value	Maximum Value
customer	0.00	0.00	0.00	0.00	0.00	0.00
Wait Time	Average	Half Width	Minimum Average	Maximum Average	Minimum Value	Maximum Value
customer	55.5533	22.51	36.1965	67.0744	0.00	145.89
Transfer Time	Average	Half Width	Minimum Average	Maximum Average	Minimum Value	Maximum Value
customer	0.00	0.00	0.00	0.00	0.00	0.00
Other Time	Average	Half Width	Minimum Average	Maximum Average	Minimum Value	Maximum Value
customer	0.00	0.00	0.00	0.00	0.00	0.00
Total Time	Average	Half Width	Minimum Average	Maximum Average	Minimum Value	Maximum Value
customer	70.6441	22.44	51.3112	82.1570	9.3611	158.79

Cost

VA Cost	Average	Half Width	Minimum Average	Maximum Average	Minimum Value	Maximum Value
customer	0.00	0.00	0.00	0.00	0.00	0.00
NVA Cost	Average	Half Width	Minimum Average	Maximum Average	Minimum Value	Maximum Value
customer	0.00	0.00	0.00	0.00	0.00	0.00
Wait Cost	Average	Half Width	Minimum Average	Maximum Average	Minimum Value	Maximum Value
customer	0.00	0.00	0.00	0.00	0.00	0.00
Other Cost	Average	Half Width	Minimum Average	Maximum Average	Minimum Value	Maximum Value
customer	0.00	0.00	0.00	0.00	0.00	0.00

ملحق رقم (3.19) : نتائج تشغيل النموذج بعد التعديل

9:06:30PM

Category Overview

February 6, 2012

Values Across All Replications

Civil Registration Center

Replications: 4 Time Units: Minutes

Entity

Cost

Transfer Cost	Average	Half Width	Minimum Average	Maximum Average	Minimum Value	Maximum Value
customer	0.00	0.00	0.00	0.00	0.00	0.00

Total Cost	Average	Half Width	Minimum Average	Maximum Average	Minimum Value	Maximum Value
customer	0.00	0.00	0.00	0.00	0.00	0.00

Other

Number In	Average	Half Width	Minimum Average	Maximum Average
customer	193.25	16.30	178.00	200.00

Number Out	Average	Half Width	Minimum Average	Maximum Average
customer	145.00	5.81	141.00	149.00

WIP	Average	Half Width	Minimum Average	Maximum Average	Minimum Value	Maximum Value
customer	27.7128	9.17	19.7043	32.8473	0.00	59.0000

ملحق رقم (4.19) تشغيل النموذج بعد التعديل

9:06:30PM

Category Overview

February 6, 2012

Values Across All Replications

Civil Registration Center

Replications: 4 Time Units: Minutes

Process

Time per Entity

VA Time Per Entity	Average	Half Width	Minimum Average	Maximum Average	Minimum Value	Maximum Value
approval	1.6467	0.09	1.5831	1.7040	0.5002	3.3219
biodevice	1.4195	0.07	1.3870	1.4829	0.00	3.3196
Data_entry	6.1623	0.25	5.9858	6.3042	1.7674	10.5261
dataentering2	6.3462	0.06	6.3063	6.3960	1.7902	10.5715
delevary	0.8703	0.05	0.8383	0.9183	0.4088	1.5062
invesment	1.8144	0.16	1.7052	1.9539	0.5994	4.0351
scanning data	1.5156	0.02	1.4976	1.5285	0.7503	2.9957
take_imag	0.6833	0.04	0.6556	0.7140	0.3336	2.7641
taken tackit	0.9139	0.02	0.9041	0.9301	0.4086	1.8377

Wait Time Per Entity	Average	Half Width	Minimum Average	Maximum Average	Minimum Value	Maximum Value
approval	0.2295	0.04	0.2044	0.2519	0.00	2.9420
biodevice	0.7423	0.22	0.5705	0.9038	0.00	6.9170
Data_entry	41.9556	33.11	11.1799	56.1676	0.00	128.38
dataentering2	66.6154	16.45	57.6137	76.0914	0.00	144.64
delevary	0.03571202	0.01	0.02838376	0.03842692	0.00	0.9469
invesment	0.3373	0.05	0.3050	0.3728	0.00	4.8534
scanning data	0.2492	0.07	0.1881	0.2852	0.00	3.4224
take_imag	0.07304065	0.03	0.04467397	0.0929	0.00	2.4887
taken tackit	0.2733	0.05	0.2431	0.3056	0.00	2.7891

Total Time Per Entity	Average	Half Width	Minimum Average	Maximum Average	Minimum Value	Maximum Value
approval	1.8762	0.13	1.7988	1.9559	0.5002	5.6751
biodevice	2.1617	0.16	2.0534	2.2908	0.00	8.8358
Data_entry	48.1179	33.29	17.1657	62.4458	2.0324	136.46
dataentering2	72.9616	16.39	63.9703	82.4174	3.4142	150.76
delevary	0.9060	0.06	0.8760	0.9567	0.4088	2.2017
invesment	2.1516	0.20	2.0102	2.3146	0.5994	6.9562
scanning data	1.7648	0.08	1.7030	1.8067	0.7503	4.7192
take_imag	0.7564	0.04	0.7389	0.7931	0.3336	3.5037
taken tackit	1.1871	0.07	1.1472	1.2357	0.4103	4.2821

Accumulated Time

ملحق رقم (5.19) تشغيل النموذج بعد التعديل

9:06:30PM

Category Overview

February 6, 2012

Values Across All Replications

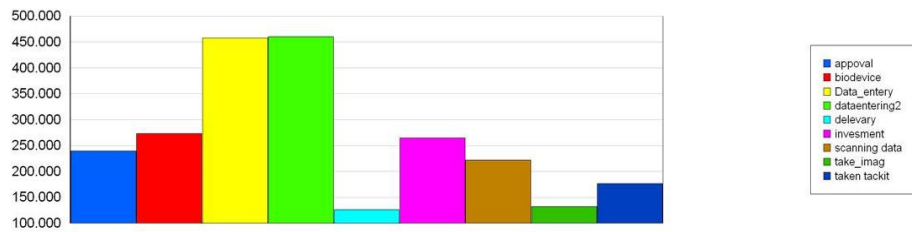
Civil Registration Center

Replications: 4 Time Units: Minutes

Process

Accumulated Time

Accum VA Time	Average	Half Width	Minimum Average	Maximum Average
approval	239.68	21.10	223.21	255.60
biodevice	272.91	11.22	262.46	277.41
Data_entry	457.60	35.88	424.99	474.33
dataentering2	460.08	10.94	451.32	468.13
delevary	126.15	6.80	119.88	129.48
invesment	265.05	13.40	257.48	275.50
scanning data	222.00	7.95	215.52	226.14
take_imag	132.04	17.76	116.69	142.80
taken tackit	176.41	16.21	161.52	183.23



ملحق رقم (6.19) تشغيل النموذج بعد التعديل

9:06:30PM

Category Overview

February 6, 2012

Values Across All Replications

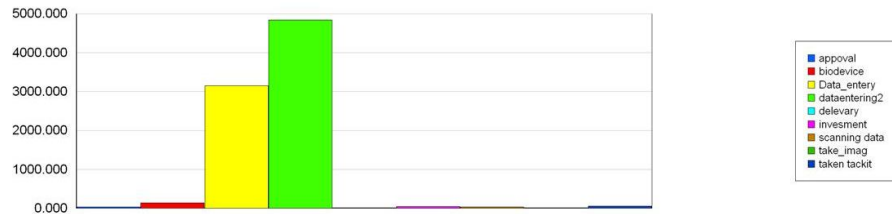
Civil Registration Center

Replications: 4 Time Units: Minutes

Process

Accumulated Time

Accum Wait Time	Average	Half Width	Minimum Average	Maximum Average
approval	33.4112	5.89	30.2560	37.7802
biodevice	143.86	52.43	100.98	180.76
Data_entry	3151.25	2,553.48	793.78	4212.57
dataentering2	4838.71	1,318.42	4090.57	5630.76
delevarly	5.1735	1.09	4.1724	5.7127
invesment	49.2311	6.28	45.9555	54.0545
scanning data	36.4253	9.22	28.0332	41.3607
take_imag	14.0069	5.63	8.8008	16.5434
taken tackit	52.8893	13.21	43.8090	60.1987



ملحق رقم (7.19) تشغيل النموذج بعد التعديل

9:06:30PM

Category Overview

February 6, 2012

Values Across All Replications

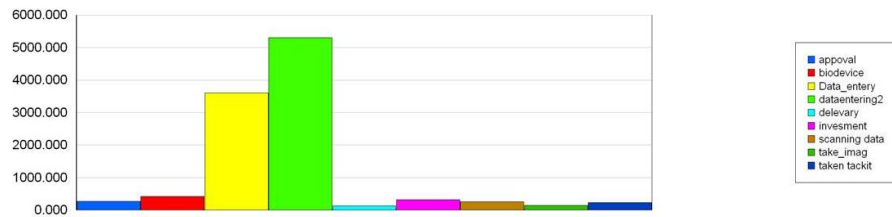
Civil Registration Center

Replications: 4 Time Units: Minutes

Process

Accumulated Time

Total Accum Time	Average	Half Width	Minimum Average	Maximum Average
approval	273.09	26.25	253.63	293.38
biodevice	416.77	62.65	363.44	458.16
Data_entry	3608.85	2,589.17	1218.77	4683.43
dataentering2	5298.79	1,326.64	4541.89	6098.89
delevary	131.32	6.73	125.27	134.90
invesment	314.28	14.90	303.53	326.36
scanning data	258.42	8.78	253.67	264.29
take_imag	146.05	16.51	133.23	158.63
taken tackit	229.29	28.42	205.33	243.42



Cost per Entity

VA Cost Per Entity	Average	Half Width	Minimum Average	Maximum Average	Minimum Value	Maximum Value
approval	0.00	0.00	0.00	0.00	0.00	0.00
biodevice	0.00	0.00	0.00	0.00	0.00	0.00
Data_entry	0.00	0.00	0.00	0.00	0.00	0.00
dataentering2	0.00	0.00	0.00	0.00	0.00	0.00
delevary	0.00	0.00	0.00	0.00	0.00	0.00
invesment	0.00	0.00	0.00	0.00	0.00	0.00
scanning data	0.00	0.00	0.00	0.00	0.00	0.00
take_imag	0.00	0.00	0.00	0.00	0.00	0.00
taken tackit	0.00	0.00	0.00	0.00	0.00	0.00

ملحق رقم (8.19): تشغيل النموذج بعد التعديل

9:06:30PM

Category Overview

February 6, 2012

Values Across All Replications

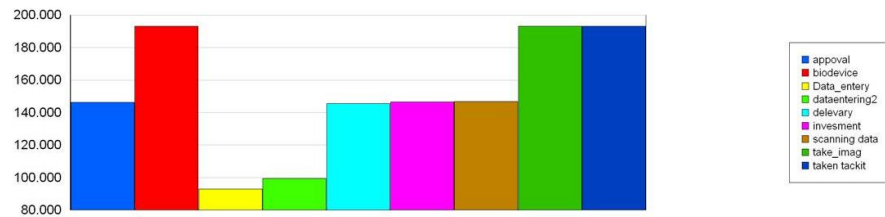
Civil Registration Center

Replications: 4 Time Units: Minutes

Process

Other

Number In	Average	Half Width	Minimum Average	Maximum Average
approval	146.25	6.80	141.00	151.00
biodevice	193.00	16.07	178.00	200.00
Data_entry	93.0000	17.57	77.0000	102.00
dataentering2	99.50	3.05	98.0000	102.00
delevary	145.50	6.69	141.00	150.00
invesment	146.50	7.06	141.00	151.00
scanning data	146.75	6.41	142.00	151.00
take_imag	193.00	16.07	178.00	200.00
taken tackit	193.25	16.30	178.00	200.00



Number Out	Average	Half Width	Minimum Average	Maximum Average
approval	145.50	6.69	141.00	150.00
biodevice	192.50	16.66	177.00	200.00
Data_entry	74.2500	4.75	71.0000	78.0000
dataentering2	72.5000	2.05	71.0000	74.0000
delevary	145.00	5.81	141.00	149.00
invesment	146.25	6.80	141.00	151.00
scanning data	146.50	7.06	141.00	151.00
take_imag	193.00	16.07	178.00	200.00
taken tackit	193.00	16.07	178.00	200.00

ملحق رقم (9.19) تشغيل النموذج بعد التعديل

9:06:30PM

Category Overview

February 6, 2012

Values Across All Replications

Civil Registration Center

Replications: 4 Time Units: Minutes

Queue

Time

Waiting Time	Average	Half Width	Minimum Average	Maximum Average	Minimum Value	Maximum Value
approval.Queue	0.2308	0.04	0.2044	0.2543	0.00	2.9420
biodevice.Queue	0.7414	0.22	0.5673	0.9038	0.00	6.9170
Data_entry.Queue	42.5193	33.42	11.4447	56.8609	0.00	128.38
dataentering2.Queue	67.2677	15.90	58.4645	76.4704	0.00	144.64
delevary.Queue	0.03560017	0.01	0.02819198	0.03842692	0.00	0.9469
invesment.Queue	0.3367	0.06	0.3050	0.3728	0.00	4.8534
scanning data.Queue	0.2487	0.07	0.1881	0.2852	0.00	3.4224
take_imag.Queue	0.07304065	0.03	0.04467397	0.0929	0.00	2.4887
taken tackit.Queue	0.2729	0.05	0.2431	0.3040	0.00	2.7891

Cost

Waiting Cost	Average	Half Width	Minimum Average	Maximum Average	Minimum Value	Maximum Value
approval.Queue	0.00	0.00	0.00	0.00	0.00	0.00
biodevice.Queue	0.00	0.00	0.00	0.00	0.00	0.00
Data_entry.Queue	0.00	0.00	0.00	0.00	0.00	0.00
dataentering2.Queue	0.00	0.00	0.00	0.00	0.00	0.00
delevary.Queue	0.00	0.00	0.00	0.00	0.00	0.00
invesment.Queue	0.00	0.00	0.00	0.00	0.00	0.00
scanning data.Queue	0.00	0.00	0.00	0.00	0.00	0.00
take_imag.Queue	0.00	0.00	0.00	0.00	0.00	0.00
taken tackit.Queue	0.00	0.00	0.00	0.00	0.00	0.00

Other

Number Waiting	Average	Half Width	Minimum Average	Maximum Average	Minimum Value	Maximum Value
approval.Queue	0.07074611	0.01	0.06303341	0.08000152	0.00	2.0000
biodevice.Queue	0.3001	0.11	0.2104	0.3766	0.00	6.0000
Data_entry.Queue	8.6805	7.41	1.8338	12.2305	0.00	27.0000
dataentering2.Queue	13.4069	2.28	11.8577	14.8229	0.00	28.0000
delevary.Queue	0.01077812	0.00	0.00869253	0.01190143	0.00	2.0000
invesment.Queue	0.1026	0.01	0.0957	0.1126	0.00	2.0000
scanning data.Queue	0.07588607	0.02	0.05840243	0.08616818	0.00	2.0000
take_imag.Queue	0.02918098	0.01	0.01833494	0.03446542	0.00	2.0000
taken tackit.Queue	0.1102	0.03	0.0913	0.1254	0.00	3.0000

ملحق رقم (10.19) تشغيل النموذج بعد التعديل

9:06:30PM

Category Overview

February 6, 2012

Values Across All Replications

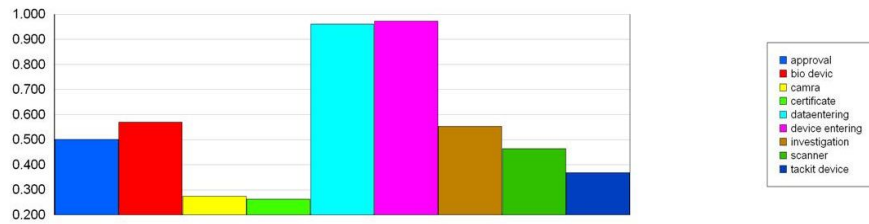
Civil Registration Center

Replications: 4 Time Units: Minutes

Resource

Usage

Scheduled Utilization	Average	Half Width	Minimum Average	Maximum Average
approval	0.5004	0.04	0.4650	0.5332
bio devic	0.5692	0.02	0.5493	0.5779
camra	0.2751	0.04	0.2431	0.2975
certificate	0.2632	0.01	0.2497	0.2697
dataentering	0.9608	0.08	0.8894	0.9934
device entering	0.9720	0.02	0.9566	0.9874
investigation	0.5535	0.03	0.5364	0.5740
scanner	0.4635	0.01	0.4530	0.4711
tackit device	0.3683	0.04	0.3365	0.3850



ملحق رقم (11.19) تشغيل النموذج بعد التعديل

9:06:30PM

Category Overview

February 6, 2012

Values Across All Replications

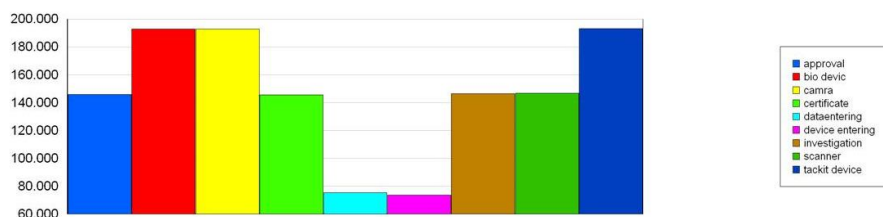
Civil Registration Center

Replications: 4 Time Units: Minutes

Resource

Usage

Total Number Seized	Average	Half Width	Minimum Average	Maximum Average
approval	146.00	7.00	141.00	151.00
bio devic	193.00	16.07	178.00	200.00
camra	193.00	16.07	178.00	200.00
certificate	145.50	6.69	141.00	150.00
dataentering	75.2500	4.75	72.0000	79.0000
device entering	73.5000	2.05	72.0000	75.0000
investigation	146.50	7.06	141.00	151.00
scanner	146.75	6.41	142.00	151.00
tackit device	193.25	16.30	178.00	200.00



Cost

Busy Cost	Average	Half Width	Minimum Average	Maximum Average
approval	0.00	0.00	0.00	0.00
bio devic	0.00	0.00	0.00	0.00
camra	0.00	0.00	0.00	0.00
certificate	0.00	0.00	0.00	0.00
dataentering	0.00	0.00	0.00	0.00
device entering	0.00	0.00	0.00	0.00
investigation	0.00	0.00	0.00	0.00
scanner	0.00	0.00	0.00	0.00
tackit device	0.00	0.00	0.00	0.00

ملحق رقم (1.20) تشغيل النموذج النهائي

3:47:03AM

Category Overview

February 7, 2012

Values Across All Replications

Civil Registration Center

Replications: 4 Time Units: Minutes

Key Performance Indicators

All Entities	Average
Non-Value Added Cost	0
Other Cost	0
Transfer Cost	0
Value Added Cost	0
Wait Cost	0
Total Cost	0

All Resources	Average
Busy Cost	0
Idle Cost	0
Usage Cost	0

Total Cost	0
------------	---

System	Average
Total Cost	0
Number Out	187

ملحق رقم (2.20) تشغيل النموذج النهائي

3:47:03AM

Category Overview

February 7, 2012

Values Across All Replications

Civil Registration Center

Replications: 4 Time Units: Minutes

Entity

Time

VA Time	Average	Half Width	Minimum Average	Maximum Average	Minimum Value	Maximum Value
customer	15.1032	0.26	14.8843	15.2775	7.4815	22.6865
NVA Time	Average	Half Width	Minimum Average	Maximum Average	Minimum Value	Maximum Value
customer	0.00	0.00	0.00	0.00	0.00	0.00
Wait Time	Average	Half Width	Minimum Average	Maximum Average	Minimum Value	Maximum Value
customer	16.9585	6.77	11.7766	21.4747	0.00	55.9981
Transfer Time	Average	Half Width	Minimum Average	Maximum Average	Minimum Value	Maximum Value
customer	0.00	0.00	0.00	0.00	0.00	0.00
Other Time	Average	Half Width	Minimum Average	Maximum Average	Minimum Value	Maximum Value
customer	0.00	0.00	0.00	0.00	0.00	0.00
Total Time	Average	Half Width	Minimum Average	Maximum Average	Minimum Value	Maximum Value
customer	32.0617	6.98	26.6609	36.6181	9.3611	69.6912

Cost

VA Cost	Average	Half Width	Minimum Average	Maximum Average	Minimum Value	Maximum Value
customer	0.00	0.00	0.00	0.00	0.00	0.00
NVA Cost	Average	Half Width	Minimum Average	Maximum Average	Minimum Value	Maximum Value
customer	0.00	0.00	0.00	0.00	0.00	0.00
Wait Cost	Average	Half Width	Minimum Average	Maximum Average	Minimum Value	Maximum Value
customer	0.00	0.00	0.00	0.00	0.00	0.00
Other Cost	Average	Half Width	Minimum Average	Maximum Average	Minimum Value	Maximum Value
customer	0.00	0.00	0.00	0.00	0.00	0.00

ملحق رقم (3.20) تشغيل النموذج النهائي

3:47:03AM

Category Overview

February 7, 2012

Values Across All Replications

Civil Registration Center

Replications: 4 Time Units: Minutes

Entity

Cost

Transfer Cost	Average	Half Width	Minimum Average	Maximum Average	Minimum Value	Maximum Value
customer	0.00	0.00	0.00	0.00	0.00	0.00

Total Cost	Average	Half Width	Minimum Average	Maximum Average	Minimum Value	Maximum Value
customer	0.00	0.00	0.00	0.00	0.00	0.00

Other

Number In	Average	Half Width	Minimum Average	Maximum Average
customer	196.25	7.62	190.00	200.00

Number Out	Average	Half Width	Minimum Average	Maximum Average
customer	187.00	15.09	179.00	200.00

WIP	Average	Half Width	Minimum Average	Maximum Average	Minimum Value	Maximum Value
customer	13.1108	3.21	10.5043	15.2575	0.00	26.0000

ملحق رقم (4.20) تشغيل النموذج النهائي

3:47:03AM

Category Overview

February 7, 2012

Values Across All Replications

Civil Registration Center

Replications: 4 Time Units: Minutes

Process

Time per Entity

VA Time Per Entity	Average	Half Width	Minimum Average	Maximum Average	Minimum Value	Maximum Value
approval	1.6610	0.07	1.6274	1.7208	0.5001	3.3193
biodevice	1.4442	0.05	1.4127	1.4750	0.00	3.1168
Data_entry	6.2789	0.42	5.9244	6.5562	1.7528	10.5744
dataentering2	5.9865	0.35	5.6737	6.1935	1.8120	10.5523
dataEntry3	6.1407	0.39	5.9047	6.4654	1.7578	10.5253
delevary	0.8574	0.03	0.8439	0.8808	0.4084	1.5062
invesment	1.8554	0.05	1.8137	1.8803	0.5994	3.9928
scanning data	1.5530	0.06	1.5016	1.5777	0.7501	2.9892
take_imag	0.6832	0.05	0.6560	0.7288	0.3334	2.9763
taken tackit	0.9284	0.04	0.8941	0.9533	0.4086	1.8393

Wait Time Per Entity	Average	Half Width	Minimum Average	Maximum Average	Minimum Value	Maximum Value
approval	0.7978	0.66	0.4983	1.4129	0.00	9.7959
biodevice	0.9018	0.20	0.7855	1.0247	0.00	7.2354
Data_entry	13.1766	3.05	10.4232	14.4859	0.00	50.3299
dataentering2	12.3704	6.94	8.8639	18.2023	0.00	52.3144
dataEntry3	13.2981	13.47	5.0929	23.0775	0.00	50.3415
delevary	0.03979526	0.02	0.03213252	0.05422230	0.00	1.1415
invesment	1.0204	0.45	0.7621	1.3269	0.00	8.5690
scanning data	0.7305	0.25	0.6099	0.9589	0.00	6.9831
take_imag	0.08152847	0.07	0.04005376	0.1394	0.00	1.8055
taken tackit	0.3955	0.18	0.2574	0.5335	0.00	5.1651

Total Time Per Entity	Average	Half Width	Minimum Average	Maximum Average	Minimum Value	Maximum Value
approval	2.4588	0.73	2.1410	3.1337	0.5027	12.7948
biodevice	2.3460	0.15	2.2580	2.4415	0.00	8.9912
Data_entry	19.4555	3.43	16.3476	21.0422	1.7664	56.2002
dataentering2	18.3569	7.12	14.8755	24.2571	1.8120	57.1423
dataEntry3	19.4388	13.44	11.2724	28.9821	1.9615	54.4339
delevary	0.8972	0.04	0.8760	0.9350	0.4084	2.2439
invesment	2.8758	0.48	2.5758	3.2072	0.5994	10.2787
scanning data	2.2835	0.27	2.1115	2.5145	0.7502	7.8714
take_imag	0.7647	0.12	0.6961	0.8682	0.3334	2.9763
taken tackit	1.3240	0.21	1.1514	1.4786	0.4086	5.8037

Accumulated Time

ملحق رقم (5.20) تشغيل النموذج النهائي

3:47:03AM

Category Overview

February 7, 2012

Values Across All Replications

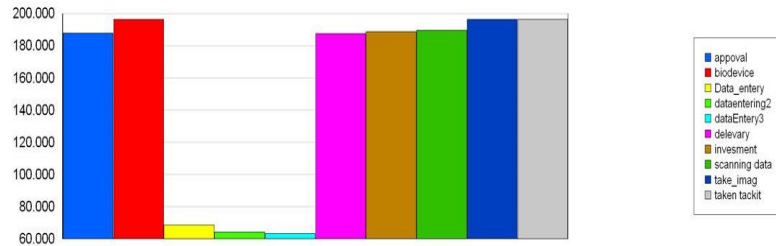
Civil Registration Center

Replications: 4 Time Units: Minutes

Process

Other

Number In	Average	Half Width	Minimum Average	Maximum Average
approval	187.75	13.89	181.00	200.00
biodevice	196.25	7.62	190.00	200.00
Data_entry	68.5000	13.28	60.0000	79.0000
dataentering2	64.2500	2.00	63.0000	66.0000
dataEntry3	63.2500	16.14	54.0000	73.0000
delevary	187.50	14.32	180.00	200.00
invesment	188.75	12.75	183.00	200.00
scanning data	189.50	11.80	183.00	200.00
take_imag	196.25	7.62	190.00	200.00
taken tackit	196.25	7.62	190.00	200.00



Number Out	Average	Half Width	Minimum Average	Maximum Average
approval	187.50	14.32	180.00	200.00
biodevice	196.00	8.32	189.00	200.00
Data_entry	66.7500	9.13	60.0000	72.0000
dataentering2	61.2500	3.53	58.0000	63.0000
dataEntry3	61.5000	14.14	54.0000	73.0000
delevary	187.00	15.09	179.00	200.00
invesment	187.75	13.89	181.00	200.00
scanning data	188.75	12.75	183.00	200.00
take_imag	196.25	7.62	190.00	200.00
taken tackit	196.25	7.62	190.00	200.00

ملحق رقم (6.20) تشغيل النموذج النهائي

3:47:03AM

Category Overview

February 7, 2012

Values Across All Replications

Civil Registration Center

Replications: 4 Time Units: Minutes

Queue

Time

Waiting Time	Average	Half Width	Minimum Average	Maximum Average	Minimum Value	Maximum Value
approval.Queue	0.7983	0.66	0.5001	1.4129	0.00	9.7959
biodevice.Queue	0.9007	0.21	0.7855	1.0247	0.00	7.2354
Data_entry.Queue	13.2776	3.21	10.4232	14.8846	0.00	50.3299
dataentering2.Queue	12.5576	7.00	8.9777	18.5227	0.00	52.3144
dataEntry3.Queue	13.3249	13.50	5.0929	23.0775	0.00	50.3415
delevarly.Queue	0.03967582	0.02	0.03195597	0.05392106	0.00	1.1415
invesment.Queue	1.0178	0.45	0.7628	1.3199	0.00	8.5690
scanning data.Queue	0.7316	0.25	0.6099	0.9589	0.00	6.9831
take_imag.Queue	0.08152847	0.07	0.04005376	0.1394	0.00	1.8055
taken tackit.Queue	0.3955	0.18	0.2574	0.5335	0.00	5.1651

Cost

Waiting Cost	Average	Half Width	Minimum Average	Maximum Average	Minimum Value	Maximum Value
approval.Queue	0.00	0.00	0.00	0.00	0.00	0.00
biodevice.Queue	0.00	0.00	0.00	0.00	0.00	0.00
Data_entry.Queue	0.00	0.00	0.00	0.00	0.00	0.00
dataentering2.Queue	0.00	0.00	0.00	0.00	0.00	0.00
dataEntry3.Queue	0.00	0.00	0.00	0.00	0.00	0.00
delevarly.Queue	0.00	0.00	0.00	0.00	0.00	0.00
invesment.Queue	0.00	0.00	0.00	0.00	0.00	0.00
scanning data.Queue	0.00	0.00	0.00	0.00	0.00	0.00
take_imag.Queue	0.00	0.00	0.00	0.00	0.00	0.00
taken tackit.Queue	0.00	0.00	0.00	0.00	0.00	0.00

Other

ملحق رقم (7.20) تشغيل النموذج النهائي

3:47:03AM

Category Overview

February 7, 2012

Values Across All Replications

Civil Registration Center

Replications: 4 Time Units: Minutes

Queue

Other

Number Waiting	Average	Half Width	Minimum Average	Maximum Average	Minimum Value	Maximum Value
approval.Queue	0.3126	0.26	0.1886	0.5534	0.00	5.0000
biodevice.Queue	0.3691	0.10	0.3136	0.4270	0.00	6.0000
Data_entry.Queue	1.9522	0.81	1.5418	2.6709	0.00	9.0000
dataentering2.Queue	1.6992	0.89	1.2535	2.4762	0.00	9.0000
dataEntry3.Queue	1.8751	2.23	0.5730	3.5097	0.00	8.0000
delevary.Queue	0.01542338	0.01	0.01211664	0.02022040	0.00	2.0000
investment.Queue	0.4029	0.20	0.2915	0.5197	0.00	5.0000
scanning data.Queue	0.2906	0.12	0.2325	0.3995	0.00	4.0000
take_imag.Queue	0.03313977	0.03	0.01627184	0.05518491	0.00	3.0000
taken tackit.Queue	0.1613	0.07	0.1072	0.2167	0.00	5.0000

ملحق رقم (8.20) تشغيل النموذج النهائي

3:47:03AM

Category Overview

February 7, 2012

Values Across All Replications

Civil Registration Center

Replications: 4 Time Units: Minutes

Resource

Usage

Instantaneous Utilization						
	Average	Half Width	Minimum Average	Maximum Average	Minimum Value	Maximum Value
approval	0.6489	0.05	0.6168	0.6781	0.00	1.0000
bio devic	0.5898	0.01	0.5819	0.5982	0.00	1.0000
camra	0.2792	0.01	0.2665	0.2885	0.00	1.0000
certificate	0.3342	0.03	0.3182	0.3584	0.00	1.0000
dataentering	0.8749	0.10	0.7957	0.9535	0.00	1.0000
device entering	0.7671	0.09	0.6892	0.8129	0.00	1.0000
deviceEntry3	0.7874	0.18	0.6890	0.8980	0.00	1.0000
investigation	0.7270	0.06	0.6864	0.7736	0.00	1.0000
scanner	0.6113	0.05	0.5725	0.6482	0.00	1.0000
tackit device	0.3796	0.02	0.3647	0.3972	0.00	1.0000
Number Busy						
	Average	Half Width	Minimum Average	Maximum Average	Minimum Value	Maximum Value
approval	0.6489	0.05	0.6168	0.6781	0.00	1.0000
bio devic	0.5898	0.01	0.5819	0.5982	0.00	1.0000
camra	0.2792	0.01	0.2665	0.2885	0.00	1.0000
certificate	0.3342	0.03	0.3182	0.3584	0.00	1.0000
dataentering	0.8749	0.10	0.7957	0.9535	0.00	1.0000
device entering	0.7671	0.09	0.6892	0.8129	0.00	1.0000
deviceEntry3	0.7874	0.18	0.6890	0.8980	0.00	1.0000
investigation	0.7270	0.06	0.6864	0.7736	0.00	1.0000
scanner	0.6113	0.05	0.5725	0.6482	0.00	1.0000
tackit device	0.3796	0.02	0.3647	0.3972	0.00	1.0000
Number Scheduled						
	Average	Half Width	Minimum Average	Maximum Average	Minimum Value	Maximum Value
approval	1.0000	0.00	1.0000	1.0000	1.0000	1.0000
bio devic	1.0000	0.00	1.0000	1.0000	1.0000	1.0000
camra	1.0000	0.00	1.0000	1.0000	1.0000	1.0000
certificate	1.0000	0.00	1.0000	1.0000	1.0000	1.0000
dataentering	1.0000	0.00	1.0000	1.0000	1.0000	1.0000
device entering	1.0000	0.00	1.0000	1.0000	1.0000	1.0000
deviceEntry3	1.0000	0.00	1.0000	1.0000	1.0000	1.0000
investigation	1.0000	0.00	1.0000	1.0000	1.0000	1.0000
scanner	1.0000	0.00	1.0000	1.0000	1.0000	1.0000
tackit device	1.0000	0.00	1.0000	1.0000	1.0000	1.0000

ملحق رقم (9.20) تشغيل النموذج النهائي

3:47:03AM

Category Overview

February 7, 2012

Values Across All Replications

Civil Registration Center

Replications: 4 Time Units: Minutes

Resource

Usage

Scheduled Utilization	Average	Half Width	Minimum Average	Maximum Average
approval	0.6489	0.05	0.6168	0.6781
bio devic	0.5898	0.01	0.5819	0.5982
camra	0.2792	0.01	0.2665	0.2885
certificate	0.3342	0.03	0.3182	0.3584
dataentering	0.8749	0.10	0.7957	0.9535
device entering	0.7671	0.09	0.6892	0.8129
deviceEntry3	0.7874	0.18	0.6890	0.8980
investigation	0.7270	0.06	0.6864	0.7736
scanner	0.6113	0.05	0.5725	0.6482
tackit device	0.3796	0.02	0.3647	0.3972

