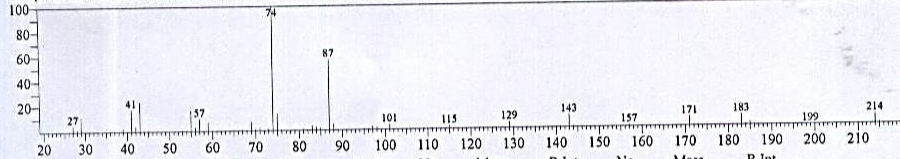


Compound Information

Entry:19411 Library:NIST11S.LIB

Formula:C13H26O2 CAS:111-82-0 MolWeight:214 RetIndex:1481

CompName:Dodecanoic acid, methyl ester \$\$ Lauric acid, methyl ester \$\$ Metholene 2296 \$\$ Methyl dodecanoate \$\$ Methyl dodecylate \$\$ Methyl laurate



No.	Mass	R.Int	No.	Mass	R.Int	No.	Mass	R.Int	No.	Mass	R.Int
1	26.00	0.10	33	68.00	0.80	65	102.00	0.40	97	144.00	0.90
2	27.00	5.00	34	69.00	7.20	66	103.00	0.10	98	145.00	0.10
3	28.00	1.80	35	70.00	1.40	67	107.00	0.10	99	149.00	0.10
4	29.00	11.70	36	71.00	2.60	68	108.00	0.10	100	150.00	0.10
5	30.00	0.30	37	72.00	0.20	69	109.00	0.50	101	151.00	0.10
6	31.00	0.60	38	73.00	1.50	70	110.00	0.20	102	152.00	0.10
7	32.00	0.10	39	74.00	100.00	71	111.00	0.90	103	153.00	0.10
8	33.00	0.10	40	75.00	13.70	72	112.00	0.50	104	154.00	0.10
9	38.00	0.10	41	76.00	0.80	73	113.00	0.10	105	155.00	0.10
10	39.00	2.90	42	77.00	0.20	74	114.00	0.10	106	157.00	1.30
11	40.00	0.60	43	78.00	0.10	75	115.00	2.40	107	158.00	0.20
12	41.00	17.60	44	79.00	0.30	76	116.00	0.70	108	159.00	0.10
13	42.00	4.30	45	80.00	0.10	77	117.00	0.10	109	163.00	0.10
14	43.00	23.50	46	81.00	1.00	78	121.00	0.10	110	164.00	0.10
15	44.00	0.90	47	82.00	0.50	79	123.00	0.10	111	165.00	0.10
16	45.00	1.10	48	83.00	3.90	80	124.00	0.10	112	167.00	0.10
17	50.00	0.10	49	84.00	2.60	81	125.00	0.30	113	171.00	7.30
18	51.00	0.10	50	85.00	1.60	82	126.00	0.10	114	172.00	0.90
19	52.00	0.10	51	86.00	0.10	83	127.00	0.10	115	173.00	0.10
20	53.00	1.10	52	87.00	56.81	84	128.00	0.10	116	181.00	0.10
21	54.00	1.10	53	88.00	4.90	85	129.00	4.90	117	182.00	0.10
22	55.00	16.30	54	89.00	0.30	86	130.00	0.60	118	183.00	8.40
23	56.00	2.90	55	91.00	0.10	87	131.00	0.10	119	184.00	1.10
24	57.00	9.80	56	93.00	0.20	88	135.00	0.10	120	185.00	2.60
25	58.00	0.50	57	94.00	0.10	89	136.00	0.10	121	186.00	0.40
26	59.00	7.30	58	95.00	0.90	90	137.00	0.10	122	187.00	0.10
27	60.00	0.30	59	96.00	0.50	91	138.00	0.40	123	199.00	0.10
28	61.00	0.10	60	97.00	2.90	92	139.00	0.30	124	213.00	0.10
29	63.00	0.10	61	98.00	2.20	93	140.00	0.70	125	214.00	7.84
30	65.00	0.10	62	99.00	0.30	94	141.00	0.20	126	215.00	1.10
31	66.00	0.10	63	100.00	0.10	95	142.00	0.10	127	216.00	0.10
32	67.00	1.40	64	101.00	4.00	96	143.00	9.80			

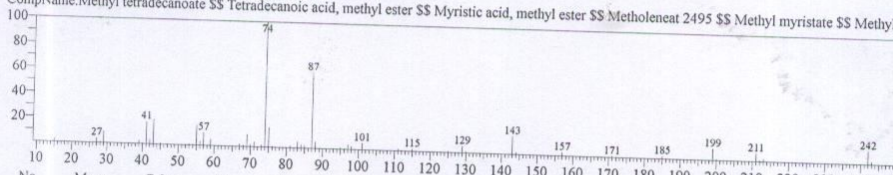


Compound Information

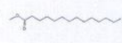
Entry:22191 Library:NIST11S.LIB

Formula:C15H30O2 CAS:124-10-7 MolWeight:242 RetIndex:1680

CompName:Methyl tetradecanoate \$\$ Tetradecanoic acid, methyl ester \$\$ Myristic acid, methyl ester \$\$ Metholeneat 2495 \$\$ Methyl myristate \$\$ Methyl n

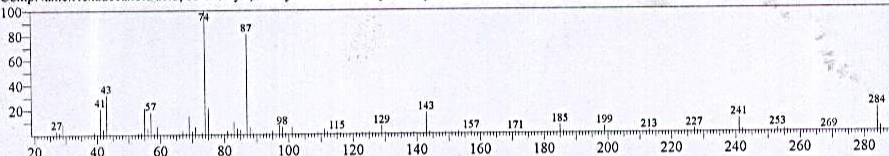


No.	Mass	R.Int	No.	Mass	R.Int	No.	Mass	R.Int	No.	Mass	R.Int
1	15.00	2.49	31	68.00	0.99	61	101.00	5.19	91	153.00	0.20
2	17.00	0.10	32	69.00	0.99	62	102.00	0.50	92	157.00	2.79
3	18.00	0.60	33	70.00	1.59	63	107.00	0.30	93	158.00	0.30
4	26.00	0.10	34	71.00	3.89	64	109.00	0.60	94	163.00	0.10
5	27.00	3.69	35	72.00	0.30	65	110.00	0.30	95	166.00	0.30
6	28.00	1.29	36	73.00	1.59	66	111.00	1.59	96	167.00	0.20
7	29.00	9.09	37	74.00	100.00	67	112.00	0.60	97	168.00	0.50
8	30.00	0.10	38	75.00	15.49	68	113.00	0.20	98	169.00	0.10
9	31.00	0.30	39	76.00	0.90	69	114.00	0.10	99	171.00	0.20
10	32.00	0.30	40	77.00	0.20	70	115.00	1.79	100	172.00	0.20
11	33.00	0.10	41	79.00	0.50	71	116.00	0.70	101	181.00	0.10
12	39.00	2.69	42	80.00	0.10	72	120.00	0.10	102	185.00	2.29
13	40.00	0.60	43	81.00	1.49	73	121.00	0.40	103	186.00	0.40
14	41.00	17.79	44	82.00	0.60	74	123.00	0.30	104	191.00	0.10
15	42.00	3.59	45	83.00	4.99	75	124.00	0.10	105	192.00	0.10
16	43.00	19.69	46	84.00	2.69	76	125.00	0.80	106	199.00	9.09
17	44.00	0.70	47	85.00	1.99	77	126.00	0.20	107	200.00	1.29
18	45.00	0.80	48	86.00	0.10	78	127.00	0.10	108	201.00	0.10
19	53.00	0.99	49	87.00	60.60	79	129.00	5.19	109	209.00	0.10
20	54.00	1.19	50	88.00	5.29	80	130.00	1.09	110	210.00	0.10
21	55.00	15.89	51	89.00	0.40	81	135.00	0.30	111	211.00	6.19
22	56.00	3.09	52	92.00	0.10	82	137.00	0.10	112	212.00	0.99
23	57.00	10.19	53	93.00	0.40	83	138.00	0.10	113	213.00	1.99
24	58.00	0.50	54	94.00	0.10	84	139.00	0.40	114	214.00	0.30
25	59.00	4.99	55	95.00	1.29	85	140.00	0.10	115	241.00	0.10
26	60.00	0.20	56	96.00	0.60	86	143.00	14.29	116	242.00	10.49
27	61.00	0.10	57	97.00	3.79	87	144.00	1.59	117	243.00	1.79
28	65.00	0.20	58	98.00	2.49	88	145.00	0.10	118	244.00	0.20
29	66.00	0.10	59	99.00	0.50	89	149.00	0.20			
30	67.00	1.79	60	100.00	0.10	90	152.00	0.10			



Compound Information

Entry:25174 Library:NIST11S.LIB  
 Formula:C18H36O2 CAS:6929-04-0 MolWeight:284 RetIndex:1914  
 CompName:Hexadecanoic acid, 15-methyl-, methyl ester \$\$ Methyl isoheptadecanoate \$\$ Methyl 15-methylhexadecanoate \$\$



No.	Mass	R.Int	No.	Mass	R.Int	No.	Mass	R.Int	No.	Mass	R.Int
1	26.00	0.30	55	88.00	5.80	109	142.00	0.40	163	200.00	0.90
2	27.00	3.40	56	89.00	0.60	110	143.00	17.00	164	201.00	0.20
3	28.00	2.10	57	90.00	0.10	111	144.00	1.70	165	207.00	0.20
4	29.00	9.00	58	91.00	0.40	112	145.00	0.30	166	208.00	0.50
5	30.00	0.30	59	92.00	0.30	113	147.00	0.20	167	209.00	0.60
6	31.00	0.60	60	93.00	0.90	114	148.00	0.20	168	210.00	0.50
7	32.00	0.40	61	94.00	0.40	115	149.00	0.90	169	211.00	0.30
8	33.00	0.20	62	95.00	2.60	116	150.00	0.30	170	213.00	1.40
9	39.00	2.40	63	96.00	1.30	117	151.00	0.50	171	214.00	0.40
10	40.00	0.60	64	97.00	7.70	118	152.00	0.60	172	215.00	0.20
11	41.00	21.00	65	98.00	6.00	119	153.00	1.90	173	219.00	0.50
12	42.00	4.60	66	99.00	1.30	120	154.00	0.50	174	220.00	0.20
13	43.00	32.00	67	100.00	0.40	121	155.00	0.30	175	221.00	0.10
14	44.00	1.20	68	101.00	5.80	122	156.00	0.20	176	222.00	0.20
15	45.00	1.10	69	102.00	0.70	123	157.00	1.90	177	223.00	0.30
16	46.00	0.10	70	103.00	0.20	124	158.00	0.40	178	224.00	0.20
17	50.00	0.10	71	104.00	0.20	125	159.00	0.20	179	225.00	0.40
18	51.00	0.20	72	105.00	0.30	126	160.00	0.20	180	226.00	0.20
19	52.00	0.20	73	106.00	0.20	127	161.00	0.10	181	227.00	2.70
20	53.00	1.20	74	107.00	0.70	128	162.00	0.10	182	228.00	0.80
21	54.00	1.70	75	108.00	0.30	129	163.00	0.50	183	229.00	0.60
22	55.00	21.00	76	109.00	1.70	130	164.00	0.20	184	230.00	0.20
23	56.00	5.70	77	110.00	0.80	131	165.00	0.30	185	233.00	0.20
24	57.00	18.00	78	111.00	4.00	132	166.00	0.60	186	234.00	0.20
25	58.00	1.20	79	112.00	2.00	133	167.00	0.70	187	235.00	0.50
26	59.00	6.80	80	113.00	0.80	134	168.00	0.30	188	236.00	0.20
27	60.00	0.40	81	114.00	0.50	135	169.00	0.30	189	237.00	0.60
28	61.00	0.30	82	115.00	2.30	136	170.00	0.20	190	238.00	0.30
29	62.00	0.10	83	116.00	1.10	137	171.00	1.30	191	239.00	0.40
30	63.00	0.10	84	117.00	0.30	138	172.00	0.60	192	240.00	0.10
31	64.00	0.10	85	118.00	0.10	139	173.00	0.20	193	241.00	11.00
32	65.00	0.30	86	119.00	0.30	140	174.00	0.30	194	242.00	2.00
33	66.00	0.30	87	120.00	0.20	141	175.00	0.10	195	243.00	0.50
34	67.00	3.00	88	121.00	0.90	142	176.00	0.10	196	244.00	0.20
35	68.00	1.70	89	122.00	0.30	143	177.00	0.40	197	250.00	0.20
36	69.00	15.00	90	123.00	1.10	144	178.00	0.10	198	251.00	0.50
37	70.00	2.60	91	124.00	0.60	145	179.00	0.20	199	252.00	0.30
38	71.00	6.30	92	125.00	2.10	146	180.00	0.20	200	253.00	2.90
39	72.00	0.60	93	126.00	0.60	147	181.00	0.40	201	254.00	0.60
40	73.00	2.00	94	127.00	0.50	148	182.00	0.30	202	255.00	2.10
41	74.00	100.00	95	128.00	0.30	149	183.00	0.20	203	256.00	1.10
42	75.00	21.00	96	129.00	6.40	150	184.00	0.20	204	257.00	0.30
43	76.00	1.40	97	130.00	1.60	151	185.00	6.40	205	266.00	0.10
44	77.00	0.40	98	131.00	0.30	152	186.00	1.20	206	267.00	0.20
45	78.00	0.20	99	132.00	0.10	153	187.00	0.30	207	268.00	0.10
46	79.00	0.70	100	133.00	0.20	154	191.00	0.40	208	269.00	0.60
47	80.00	0.50	101	134.00	0.30	155	192.00	0.20	209	270.00	0.60
48	81.00	3.00	102	135.00	1.40	156	193.00	0.20	210	271.00	0.20
49	82.00	1.40	103	136.00	0.30	157	194.00	0.40	211	282.00	0.10
50	83.00	10.00	104	137.00	0.70	158	195.00	0.50	212	283.00	0.30
51	84.00	4.90	105	138.00	0.40	159	196.00	0.30	213	284.00	19.04
52	85.00	3.70	106	139.00	1.20	160	197.00	0.20	214	285.00	3.80
53	86.00	0.40	107	140.00	0.40	161	198.00	0.20	215	286.00	0.60
54	87.00	81.01	108	141.00	0.40	162	199.00	5.10	216	287.00	0.20

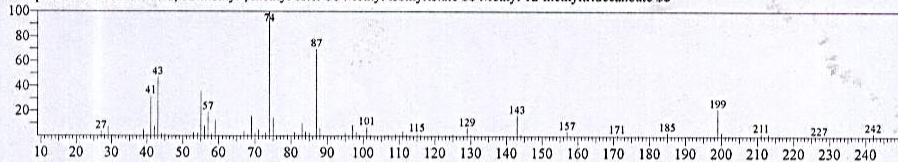


## Compound Information

Entry:73852 Library:NIST11.LIB

Formula:C15H30O2 CAS:5129-58-8 MolWeight:242 RetIndex:1615

CompName:Tridecanoic acid, 12-methyl-, methyl ester \$\$ Methyl isomyristate \$\$ Methyl 12-methyltridecanoate \$\$

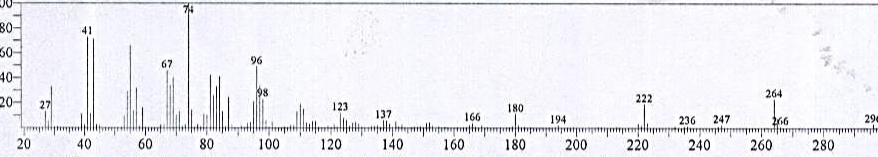


No.	Mass	R.Int	No.	Mass	R.Int	No.	Mass	R.Int	No.	Mass	R.Int
1	15.00	0.90	35	71.00	4.90	69	110.00	0.60	103	158.00	0.40
2	26.00	0.10	36	72.00	0.40	70	111.00	3.60	104	159.00	0.10
3	27.00	3.90	37	73.00	2.60	71	112.00	1.10	105	166.00	0.20
4	28.00	1.00	38	74.00	100.00	72	113.00	0.40	106	167.00	0.40
5	29.00	7.71	39	75.00	14.81	73	114.00	0.10	107	168.00	0.20
6	30.00	0.20	40	76.00	0.90	74	115.00	2.00	108	169.00	0.10
7	31.00	0.40	41	77.00	0.30	75	116.00	0.90	109	171.00	1.30
8	33.00	0.10	42	78.00	0.10	76	117.00	0.10	110	172.00	0.20
9	38.00	0.10	43	79.00	1.10	77	121.00	0.90	111	177.00	0.70
10	39.00	4.80	44	80.00	0.30	78	122.00	0.10	112	178.00	0.10
11	40.00	1.20	45	81.00	2.90	79	123.00	0.80	113	185.00	3.00
12	41.00	31.83	46	82.00	1.10	80	124.00	0.30	114	186.00	0.50
13	42.00	7.71	47	83.00	10.01	81	125.00	1.40	115	187.00	0.30
14	43.00	47.04	48	84.00	3.40	82	126.00	0.30	116	191.00	0.10
15	44.00	1.70	49	85.00	2.70	83	127.00	0.10	117	192.00	0.10
16	45.00	1.70	50	87.00	69.97	84	129.00	6.51	118	193.00	0.20
17	51.00	0.20	51	88.00	6.01	85	130.00	1.60	119	195.00	0.40
18	52.00	0.10	52	89.00	0.50	86	131.00	0.20	120	196.00	0.10
19	53.00	2.60	53	91.00	0.20	87	135.00	0.70	121	199.00	21.92
20	54.00	2.40	54	93.00	1.00	88	136.00	0.10	122	200.00	3.10
21	55.00	35.93	55	94.00	0.20	89	137.00	0.50	123	201.00	0.50
22	56.00	7.91	56	95.00	2.60	90	138.00	0.10	124	209.00	0.20
23	57.00	19.02	57	96.00	0.80	91	139.00	0.60	125	211.00	2.50
24	58.00	1.20	58	97.00	8.91	92	140.00	0.30	126	212.00	0.40
25	59.00	12.51	59	98.00	3.10	93	141.00	0.10	127	213.00	1.90
26	60.00	0.40	60	99.00	0.70	94	143.00	16.51	128	214.00	0.20
27	61.00	0.30	61	100.00	0.30	95	144.00	1.70	129	215.00	0.10
28	63.00	0.10	62	101.00	7.21	96	145.00	0.10	130	227.00	0.20
29	65.00	0.50	63	102.00	0.70	97	149.00	0.70	131	228.00	0.10
30	66.00	0.20	64	103.00	0.10	98	150.00	0.10	132	241.00	0.10
31	67.00	3.70	65	105.00	0.10	99	151.00	0.20	133	242.00	2.80
32	68.00	1.50	66	107.00	0.80	100	153.00	0.40	134	243.00	0.60
33	69.00	15.61	67	108.00	0.20	101	154.00	0.10	135	244.00	0.10
34	70.00	2.50	68	109.00	1.40	102	157.00	3.90			



Compound Information

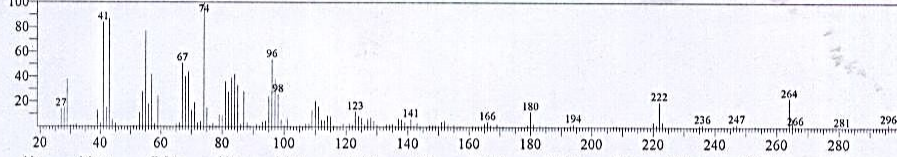
Entry:115438 Library:NIST11.LIB  
 Formula:C19H36O2 CAS:56554-45-1 MolWeight:296 RetIndex:2085  
 CompName:5-Octadecenoic acid, methyl ester \$S\$ Methyl (5E)-5-octadecenoate # \$S\$



No.	Mass	R.Int	No.	Mass	R.Int	No.	Mass	R.Int	No.	Mass	R.Int
1	26.00	0.60	60	89.00	0.30	119	148.00	1.10	178	211.00	0.20
2	27.00	13.00	61	90.00	0.10	120	149.00	1.20	179	212.00	0.10
3	28.00	5.20	62	91.00	2.10	121	150.00	0.60	180	213.00	0.80
4	29.00	33.00	63	92.00	0.70	122	151.00	3.80	181	214.00	0.40
5	30.00	0.90	64	93.00	3.70	123	152.00	4.40	182	215.00	0.10
6	31.00	1.30	65	94.00	4.40	124	153.00	1.90	183	217.00	0.20
7	32.00	0.50	66	95.00	21.00	125	154.00	0.50	184	218.00	0.10
8	33.00	0.30	67	96.00	49.00	126	155.00	1.40	185	219.00	0.10
9	36.00	0.30	68	97.00	34.00	127	156.00	0.40	186	220.00	3.40
10	37.00	0.20	69	98.00	23.00	128	157.00	1.10	187	221.00	2.00
11	38.00	0.30	70	99.00	6.10	129	158.00	0.30	188	222.00	19.00
12	39.00	11.00	71	100.00	1.10	130	159.00	0.10	189	223.00	3.80
13	40.00	2.40	72	101.00	5.10	131	161.00	0.70	190	224.00	0.40
14	41.00	73.01	73	102.00	0.60	132	162.00	0.30	191	225.00	0.20
15	42.00	11.00	74	103.00	0.10	133	163.00	0.60	192	226.00	0.10
16	43.00	71.01	75	104.00	0.10	134	164.00	0.70	193	227.00	0.30
17	44.00	2.80	76	105.00	0.90	135	165.00	2.30	194	228.00	0.30
18	45.00	2.40	77	106.00	0.60	136	166.00	4.00	195	229.00	0.20
19	46.00	0.10	78	107.00	2.20	137	167.00	1.30	196	230.00	0.40
20	47.00	0.10	79	108.00	2.30	138	168.00	0.40	197	231.00	0.30
21	50.00	0.20	80	109.00	13.00	139	169.00	2.20	198	232.00	1.40
22	51.00	0.60	81	110.00	19.00	140	170.00	0.40	199	233.00	0.10
23	52.00	0.70	82	111.00	15.00	141	171.00	0.80	200	234.00	0.10
24	53.00	9.00	83	112.00	4.50	142	172.00	0.20	201	235.00	1.30
25	54.00	29.00	84	113.00	3.10	143	174.00	0.10	202	236.00	1.60
26	55.00	66.01	85	114.00	4.90	144	175.00	0.50	203	237.00	0.40
27	56.00	14.00	86	115.00	5.40	145	176.00	0.20	204	238.00	0.10
28	57.00	32.00	87	116.00	0.90	146	177.00	0.40	205	239.00	0.20
29	58.00	1.60	88	117.00	0.20	147	178.00	0.40	206	240.00	0.10
30	59.00	16.00	89	118.00	0.20	148	179.00	1.40	207	241.00	0.20
31	60.00	0.70	90	119.00	2.00	149	180.00	11.00	208	242.00	0.10
32	61.00	0.40	91	120.00	0.70	150	181.00	2.20	209	245.00	0.20
33	62.00	0.10	92	121.00	2.80	151	182.00	0.40	210	246.00	1.30
34	63.00	0.20	93	122.00	1.30	152	183.00	1.20	211	247.00	2.60
35	64.00	0.10	94	123.00	12.00	153	184.00	0.30	212	248.00	0.60
36	65.00	2.60	95	124.00	7.90	154	185.00	0.60	213	249.00	0.30
37	66.00	2.80	96	125.00	6.20	155	186.00	0.30	214	250.00	0.10
38	67.00	46.00	97	126.00	1.60	156	187.00	0.10	215	253.00	0.70
39	68.00	34.00	98	127.00	3.90	157	189.00	0.30	216	254.00	0.20
40	69.00	40.00	99	128.00	5.10	158	190.00	0.20	217	255.00	0.30
41	70.00	10.00	100	129.00	3.40	159	191.00	0.30	218	256.00	0.10
42	71.00	13.00	101	130.00	0.80	160	192.00	0.20	219	263.00	0.40
43	72.00	1.60	102	131.00	0.20	161	193.00	1.10	220	264.00	23.00
44	73.00	2.60	103	132.00	0.10	162	194.00	2.30	221	265.00	7.80
45	74.00	100.00	104	133.00	1.50	163	195.00	0.60	222	266.00	1.20
46	75.00	14.00	105	134.00	1.50	164	196.00	0.20	223	267.00	0.40
47	76.00	0.80	106	135.00	2.30	165	197.00	0.30	224	268.00	0.20
48	77.00	3.00	107	136.00	0.90	166	198.00	0.10	225	269.00	0.10
49	78.00	1.20	108	137.00	6.10	167	199.00	0.80	226	278.00	0.30
50	79.00	11.00	109	138.00	5.60	168	200.00	0.40	227	279.00	0.10
51	80.00	10.00	110	139.00	3.20	169	201.00	0.10	228	294.00	0.10
52	81.00	42.00	111	140.00	0.90	170	203.00	0.20	229	295.00	0.10
53	82.00	26.00	112	141.00	5.20	171	204.00	0.10	230	296.00	3.14
54	83.00	33.00	113	142.00	1.40	172	205.00	0.20	231	297.00	0.70
55	84.00	41.00	114	143.00	2.60	173	206.00	0.20	232	298.00	0.30
56	85.00	13.00	115	144.00	0.40	174	207.00	0.80	233	299.00	0.10
57	86.00	1.00	116	145.00	0.20	175	208.00	0.80			
58	87.00	24.00	117	146.00	0.10	176	209.00	0.40			
59	88.00	2.90	118	147.00	1.00	177	210.00	0.20			

Compound Information

Entry:115440 Library:NIST11.LIB  
 Formula:C19H36O2 CAS:56555-10-3 MolWeight:296 RetIndex:2085  
 CompName:4-Octadecenoic acid, methyl ester \$S Methyl (4E)-4-octadecenoate # \$S



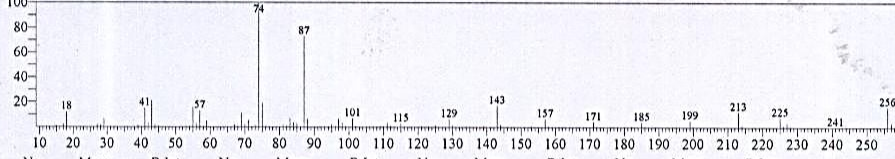
No.	Mass	R.Int	No.	Mass	R.Int	No.	Mass	R.Int	No.	Mass	R.Int
1	25.00	0.30	63	87.00	28.00	125	150.00	0.80	187	214.00	0.60
2	26.00	0.90	64	88.00	3.40	126	151.00	4.10	188	215.00	0.20
3	27.00	14.00	65	89.00	0.40	127	152.00	4.90	189	216.00	0.10
4	28.00	15.00	66	90.00	0.10	128	153.00	2.10	190	217.00	0.30
5	29.00	38.00	67	91.00	2.10	129	154.00	0.70	191	218.00	0.20
6	30.00	1.10	68	92.00	0.80	130	155.00	1.80	192	219.00	0.20
7	31.00	1.30	69	93.00	3.70	131	156.00	0.60	193	220.00	4.00
8	32.00	2.10	70	94.00	4.70	132	157.00	1.30	194	221.00	2.10
9	33.00	0.40	71	95.00	24.00	133	158.00	0.30	195	222.00	20.00
10	34.00	0.10	72	96.00	54.01	134	159.00	0.20	196	223.00	4.10
11	35.00	0.20	73	97.00	38.00	135	160.00	0.10	197	224.00	0.50
12	36.00	0.80	74	98.00	26.00	136	161.00	0.80	198	225.00	0.30
13	37.00	0.30	75	99.00	5.50	137	162.00	0.50	199	226.00	0.20
14	38.00	0.50	76	100.00	1.50	138	163.00	0.70	200	227.00	0.40
15	39.00	13.00	77	101.00	6.10	139	164.00	0.80	201	228.00	0.40
16	40.00	3.20	78	102.00	0.90	140	165.00	2.60	202	229.00	0.30
17	41.00	84.01	79	103.00	0.30	141	166.00	4.20	203	231.00	0.30
18	42.00	15.00	80	104.00	0.30	142	167.00	1.50	204	232.00	0.20
19	43.00	87.01	81	105.00	1.00	143	168.00	0.60	205	233.00	0.20
20	44.00	5.80	82	106.00	0.50	144	169.00	2.50	206	234.00	0.20
21	45.00	2.80	83	107.00	2.40	145	170.00	0.50	207	235.00	1.30
22	46.00	0.20	84	108.00	2.70	146	171.00	1.00	208	236.00	2.00
23	47.00	0.20	85	109.00	13.00	147	172.00	0.30	209	237.00	0.50
24	48.00	0.20	86	110.00	20.00	148	173.00	0.20	210	238.00	0.20
25	49.00	0.10	87	111.00	16.00	149	174.00	0.10	211	239.00	0.30
26	50.00	0.40	88	112.00	5.20	150	175.00	0.60	212	240.00	0.20
27	51.00	0.90	89	113.00	5.30	151	176.00	0.30	213	241.00	0.30
28	52.00	0.90	90	114.00	8.60	152	177.00	0.50	214	242.00	0.40
29	53.00	11.00	91	115.00	8.00	153	178.00	0.50	215	243.00	0.20
30	54.00	28.00	92	116.00	1.10	154	179.00	1.60	216	245.00	0.30
31	55.00	77.01	93	117.00	0.30	155	180.00	12.00	217	246.00	1.40
32	56.00	18.00	94	118.00	0.30	156	181.00	2.40	218	247.00	2.40
33	57.00	42.00	95	119.00	2.40	157	182.00	0.50	219	248.00	0.60
34	58.00	2.40	96	120.00	0.80	158	183.00	1.40	220	249.00	0.30
35	59.00	24.00	97	121.00	2.70	159	184.00	0.30	221	250.00	0.30
36	60.00	1.10	98	122.00	1.50	160	185.00	0.80	222	251.00	0.10
37	61.00	0.60	99	123.00	12.00	161	186.00	0.40	223	252.00	0.10
38	62.00	0.10	100	124.00	8.40	162	187.00	0.20	224	253.00	0.80
39	63.00	0.30	101	125.00	7.00	163	189.00	0.40	225	254.00	0.30
40	64.00	0.30	102	126.00	2.20	164	190.00	0.20	226	255.00	0.30
41	65.00	2.90	103	127.00	6.50	165	191.00	0.40	227	256.00	0.20
42	66.00	3.30	104	128.00	7.40	166	192.00	0.30	228	257.00	0.10
43	67.00	51.01	105	129.00	4.60	167	193.00	1.20	229	263.00	0.50
44	68.00	40.00	106	130.00	1.90	168	194.00	2.50	230	264.00	23.00
45	69.00	44.00	107	131.00	0.40	169	195.00	0.60	231	265.00	7.00
46	70.00	13.00	108	132.00	0.20	170	196.00	0.30	232	266.00	1.10
47	71.00	19.00	109	133.00	1.80	171	197.00	0.50	233	267.00	0.60
48	72.00	3.30	110	134.00	1.80	172	198.00	0.20	234	268.00	0.30
49	73.00	4.30	111	135.00	2.30	173	199.00	1.10	235	269.00	0.20
50	74.00	100.00	112	136.00	1.00	174	200.00	0.60	236	270.00	0.10
51	75.00	15.00	113	137.00	6.60	175	201.00	0.20	237	278.00	0.40
52	76.00	1.00	114	138.00	5.80	176	203.00	0.20	238	279.00	0.20
53	77.00	2.80	115	139.00	3.70	177	204.00	0.20	239	281.00	0.10
54	78.00	1.20	116	140.00	1.10	178	205.00	0.30	240	282.00	0.10
55	79.00	9.10	117	141.00	6.20	179	206.00	0.30	241	294.00	0.20
56	80.00	8.90	118	142.00	1.70	180	207.00	1.00	242	296.00	2.64
57	81.00	36.00	119	143.00	3.30	181	208.00	1.00	243	297.00	0.70
58	82.00	28.00	120	144.00	0.60	182	209.00	0.50	244	298.00	0.40
59	83.00	39.00	121	145.00	0.30	183	210.00	0.40	245	299.00	0.20
60	84.00	42.00	122	147.00	1.20	184	211.00	0.50			
61	85.00	33.00	123	148.00	1.20	185	212.00	0.20			
62	86.00	2.30	124	149.00	1.30	186	213.00	0.90			

Compound Information

Entry:23316 Library:NIST115.LIB

Formula:C16H32O2 CAS:7132-64-1 MolWeight:256 RetIndex:1779

CompName: Pentadecanoic acid, methyl ester \$\$ Methyl n-pentadecanoate \$\$ Methyl pentadecanoate \$\$ n-Pentadecanoic acid methyl ester \$\$



No.	Mass	R.Int	No.	Mass	R.Int	No.	Mass	R.Int	No.	Mass	R.Int
1	15.00	1.30	38	73.00	1.70	75	117.00	0.20	112	172.00	0.70
2	16.00	0.20	39	74.00	100.00	76	119.00	0.20	113	177.00	0.30
3	17.00	2.40	40	75.00	19.02	77	121.00	0.70	114	178.00	0.20
4	18.00	12.01	41	76.00	1.10	78	122.00	0.20	115	180.00	0.50
5	26.00	0.20	42	77.00	0.30	79	123.00	0.70	116	181.00	0.30
6	27.00	2.40	43	78.00	0.20	80	124.00	0.40	117	182.00	0.70
7	28.00	1.70	44	79.00	0.70	81	125.00	1.50	118	183.00	0.20
8	29.00	6.51	45	80.00	0.30	82	126.00	0.40	119	185.00	4.10
9	30.00	0.50	46	81.00	2.20	83	127.00	0.30	120	186.00	0.70
10	31.00	0.50	47	82.00	1.30	84	129.00	6.41	121	187.00	0.20
11	32.00	0.20	48	83.00	7.21	85	130.00	1.40	122	191.00	0.20
12	39.00	1.80	49	84.00	3.60	86	131.00	0.20	123	194.00	0.20
13	40.00	0.40	50	85.00	3.40	87	135.00	0.60	124	195.00	0.60
14	41.00	15.01	51	86.00	0.30	88	136.00	0.20	125	196.00	0.20
15	42.00	3.50	52	87.00	73.08	89	137.00	0.40	126	199.00	5.30
16	43.00	21.02	53	88.00	6.61	90	138.00	0.30	127	200.00	0.70
17	44.00	2.50	54	89.00	0.50	91	139.00	0.80	128	206.00	0.30
18	45.00	0.80	55	93.00	0.70	92	140.00	0.30	129	207.00	0.20
19	46.00	0.20	56	94.00	0.30	93	141.00	0.30	130	208.00	0.20
20	53.00	0.70	57	95.00	2.20	94	143.00	17.02	131	210.00	0.20
21	54.00	1.00	58	96.00	1.30	95	144.00	1.90	132	212.00	0.20
22	55.00	16.01	59	97.00	6.51	96	145.00	0.20	133	213.00	12.01
23	56.00	3.00	60	98.00	3.70	97	151.00	0.20	134	214.00	1.80
24	57.00	13.01	61	99.00	0.90	98	152.00	0.30	135	215.00	0.20
25	58.00	0.80	62	100.00	0.30	99	153.00	0.60	136	223.00	0.30
26	59.00	5.00	63	101.00	7.01	100	154.00	0.30	137	224.00	0.20
27	60.00	0.40	64	102.00	0.90	101	155.00	0.20	138	225.00	7.71
28	61.00	0.20	65	107.00	0.60	102	157.00	6.61	139	226.00	1.30
29	64.00	0.20	66	108.00	0.20	103	158.00	0.90	140	227.00	3.40
30	65.00	0.20	67	109.00	1.30	104	159.00	0.20	141	228.00	0.60
31	66.00	0.20	68	110.00	0.80	105	163.00	0.30	142	241.00	0.20
32	67.00	2.10	69	111.00	3.30	106	165.00	0.20	143	242.00	0.20
33	68.00	1.30	70	112.00	1.10	107	166.00	0.20	144	253.00	0.20
34	69.00	11.01	71	113.00	0.60	108	167.00	0.40	145	255.00	0.30
35	70.00	2.50	72	114.00	0.20	109	168.00	0.20	146	256.00	16.01
36	71.00	5.61	73	115.00	2.90	110	169.00	0.20	147	257.00	3.30
37	72.00	0.50	74	116.00	1.00	111	171.00	4.20	148	258.00	0.40

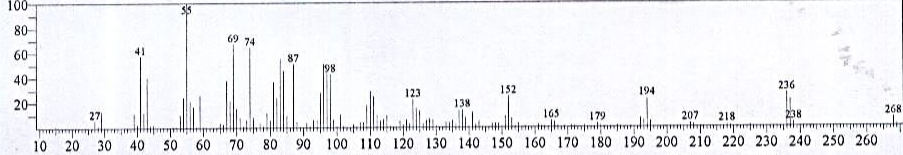


Compound Information

Entry:93479 Library:NIST11.LIB

Formula:C17H32O2 CAS:1120-25-8 MolWeight:268 RetIndex:1886

CompName:9-Hexadecenoic acid, methyl ester, (Z)- S5 Methyl palmitoleate S5 Methyl palmitoleinate S5 Palmitoleic acid, methyl ester S5 Methyl (9Z)-9-he



No.	Mass	R.Int	No.	Mass	R.Int	No.	Mass	R.Int	No.	Mass	R.Int
1	15.00	1.40	48	82.00	23.92	95	131.00	0.30	142	180.00	1.60
2	26.00	0.30	49	83.00	54.76	96	132.00	0.20	143	181.00	1.00
3	27.00	5.91	50	84.00	45.44	97	133.00	4.40	144	182.00	0.30
4	28.00	1.90	51	85.00	9.31	98	134.00	3.90	145	183.00	0.50
5	29.00	12.91	52	87.00	51.06	99	135.00	5.40	146	184.00	0.10
6	30.00	0.40	53	88.00	4.80	100	136.00	2.70	147	185.00	1.50
7	31.00	0.50	54	89.00	0.40	101	137.00	13.51	148	186.00	0.90
8	33.00	0.20	55	91.00	3.90	102	138.00	13.81	149	187.00	0.20
9	39.00	11.41	56	92.00	1.10	103	139.00	7.71	150	189.00	0.80
10	40.00	2.60	57	93.00	6.11	104	140.00	1.50	151	190.00	0.20
11	41.00	57.36	58	94.00	6.11	105	141.00	11.91	152	192.00	6.91
12	42.00	12.01	59	95.00	27.83	106	142.00	2.10	153	193.00	5.20
13	43.00	40.14	60	96.00	50.56	107	143.00	4.80	154	194.00	22.82
14	44.00	1.60	61	97.00	49.54	108	144.00	0.70	155	195.00	4.70
15	45.00	2.50	62	98.00	42.54	109	145.00	0.20	156	196.00	0.40
16	46.00	0.10	63	99.00	6.01	110	146.00	0.10	157	197.00	0.30
17	50.00	0.20	64	100.00	1.50	111	147.00	3.70	158	198.00	0.10
18	51.00	0.90	65	101.00	10.01	112	148.00	3.20	159	199.00	0.50
19	52.00	0.90	66	102.00	1.10	113	149.00	3.10	160	200.00	0.50
20	53.00	10.31	67	103.00	0.20	114	150.00	1.40	161	201.00	0.10
21	54.00	24.12	68	104.00	0.10	115	151.00	8.61	162	203.00	0.10
22	55.00	100.00	69	105.00	2.40	116	152.00	24.72	163	205.00	0.10
23	56.00	21.52	70	106.00	1.00	117	153.00	6.81	164	207.00	3.00
24	57.00	16.72	71	107.00	4.70	118	154.00	1.00	165	208.00	2.20
25	58.00	1.10	72	108.00	4.30	119	155.00	3.40	166	209.00	0.30
26	59.00	25.82	73	109.00	17.42	120	156.00	0.60	167	211.00	0.20
27	60.00	0.80	74	110.00	28.93	121	157.00	1.30	168	213.00	0.30
28	61.00	0.30	75	111.00	24.72	122	158.00	0.40	169	217.00	0.20
29	62.00	0.10	76	112.00	9.81	123	159.00	0.10	170	218.00	2.10
30	63.00	0.20	77	113.00	5.50	124	161.00	2.20	171	219.00	1.30
31	65.00	3.70	78	114.00	6.41	125	162.00	0.80	172	220.00	0.20
32	66.00	2.40	79	115.00	9.61	126	163.00	1.20	173	221.00	0.60
33	67.00	37.63	80	116.00	1.50	127	164.00	0.60	174	222.00	0.10
34	68.00	21.62	81	117.00	0.30	128	165.00	5.20	175	225.00	1.30
35	69.00	66.97	82	118.00	0.30	129	166.00	4.50	176	226.00	0.20
36	70.00	15.11	83	119.00	5.00	130	167.00	1.70	177	227.00	0.20
37	71.00	8.21	84	120.00	1.80	131	168.00	0.30	178	236.00	26.72
38	72.00	1.30	85	121.00	6.01	132	169.00	1.00	179	237.00	21.42
39	73.00	6.11	86	122.00	3.10	133	170.00	0.20	180	238.00	3.50
40	74.00	64.37	87	123.00	22.32	134	171.00	1.50	181	239.00	0.60
41	75.00	8.11	88	124.00	15.01	135	172.00	0.90	182	240.00	0.10
42	76.00	0.60	89	125.00	13.11	136	173.00	0.20	183	250.00	0.50
43	77.00	3.70	90	126.00	2.80	137	175.00	1.40	184	251.00	0.10
44	78.00	1.30	91	127.00	5.71	138	176.00	0.50	185	268.00	6.91
45	79.00	11.71	92	128.00	6.81	139	177.00	0.40	186	269.00	1.60
46	80.00	5.61	93	129.00	6.11	140	178.00	0.40	187	270.00	0.20
47	81.00	36.63	94	130.00	1.30	141	179.00	3.10			

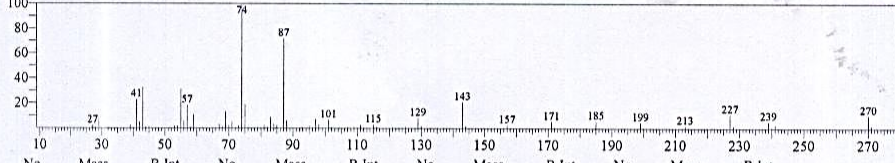


Compound Information

Entry:95188 Library:NIST11.LIB

Formula:C17H34O2 CAS:112-39-0 MolWeight:270 RetIndex:1878

CompName:Hexadecanoic acid, methyl ester SS Palmitic acid, methyl ester SS n-Hexadecanoic acid methyl ester SS Metholene 2216 SS Methyl hexadecanoic acid



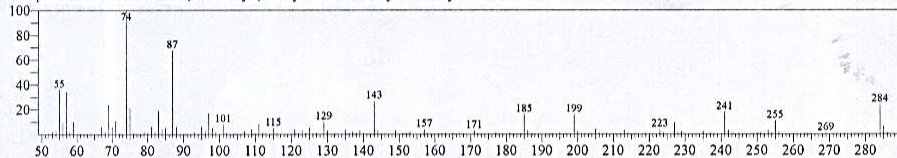
No.	Mass	R.Int	No.	Mass	R.Int	No.	Mass	R.Int	No.	Mass	R.Int
1	15.00	0.50	37	74.00	100.00	73	115.00	3.00	109	167.00	0.20
2	26.00	0.10	38	75.00	18.82	74	116.00	1.20	110	168.00	0.10
3	27.00	2.20	39	76.00	1.00	75	117.00	0.10	111	171.00	5.50
4	28.00	0.70	40	77.00	0.40	76	121.00	0.70	112	172.00	0.80
5	29.00	6.61	41	78.00	0.10	77	122.00	0.10	113	173.00	0.10
6	30.00	0.20	42	79.00	1.00	78	123.00	0.50	114	177.00	0.10
7	31.00	0.30	43	80.00	0.30	79	124.00	0.30	115	181.00	0.10
8	33.00	0.10	44	81.00	2.40	80	125.00	1.30	116	185.00	5.81
9	38.00	0.10	45	82.00	1.20	81	126.00	0.20	117	186.00	0.80
10	39.00	2.90	46	83.00	8.91	82	127.00	0.20	118	187.00	0.10
11	40.00	0.70	47	84.00	3.60	83	129.00	8.31	119	191.00	0.10
12	41.00	22.82	48	85.00	2.90	84	130.00	1.80	120	194.00	0.20
13	42.00	5.10	49	87.00	72.07	85	131.00	0.10	121	195.00	0.10
14	43.00	32.53	50	88.00	6.11	86	135.00	0.60	122	196.00	0.30
15	44.00	1.20	51	89.00	0.50	87	136.00	0.10	123	199.00	4.60
16	45.00	1.20	52	91.00	0.20	88	137.00	0.20	124	200.00	0.70
17	51.00	0.10	53	93.00	0.80	89	138.00	0.20	125	201.00	0.10
18	52.00	0.10	54	94.00	0.20	90	139.00	0.60	126	209.00	0.10
19	53.00	1.90	55	95.00	2.10	91	140.00	0.10	127	213.00	2.00
20	54.00	2.20	56	96.00	1.00	92	141.00	0.10	128	214.00	0.40
21	55.00	31.03	57	97.00	7.21	93	143.00	20.82	129	219.00	0.10
22	56.00	5.91	58	98.00	3.30	94	144.00	2.10	130	220.00	0.10
23	57.00	18.32	59	99.00	0.80	95	145.00	0.20	131	221.00	0.10
24	58.00	1.30	60	100.00	0.30	96	149.00	0.40	132	223.00	0.10
25	59.00	10.61	61	101.00	6.61	97	150.00	0.10	133	227.00	11.01
26	60.00	0.40	62	102.00	0.80	98	151.00	0.10	134	228.00	1.80
27	61.00	0.20	63	103.00	0.10	99	152.00	0.10	135	229.00	0.20
28	65.00	0.40	64	105.00	0.10	100	153.00	0.30	136	237.00	0.10
29	66.00	0.20	65	107.00	0.70	101	154.00	0.10	137	239.00	5.50
30	67.00	3.20	66	108.00	0.10	102	155.00	0.10	138	240.00	1.00
31	68.00	1.40	67	109.00	1.10	103	157.00	2.60	139	241.00	2.90
32	69.00	13.21	68	110.00	0.50	104	158.00	0.50	140	242.00	0.50
33	70.00	2.40	69	111.00	2.60	105	159.00	0.10	141	243.00	0.10
34	71.00	5.20	70	112.00	0.80	106	163.00	0.20	142	270.00	10.31
35	72.00	0.50	71	113.00	0.40	107	165.00	0.10	143	271.00	2.00
36	73.00	2.50	72	114.00	0.20	108	166.00	0.10	144	272.00	0.20

Compound Information

Entry:25175 Library:NIST11S.LIB

Formula:C18H36O2 CAS:2490-49-5 MolWeight:284 RefIndex:1914

CompName:Hexadecanoic acid, 14-methyl-, methyl ester \$\$ Methyl 14-methylhexadecanoate \$\$

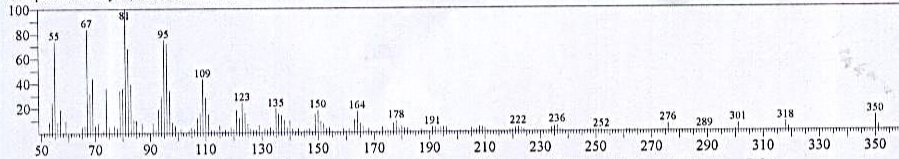


No.	Mass	R.Int	No.	Mass	R.Int	No.	Mass	R.Int	No.	Mass	R.Int
1	53.00	2.00	27	94.00	1.00	53	136.00	1.00	79	206.00	1.00
2	54.00	3.00	28	95.00	6.01	54	137.00	2.00	80	208.00	1.00
3	55.00	35.93	29	96.00	3.00	55	138.00	1.00	81	213.00	3.00
4	56.00	10.01	30	97.00	16.92	56	139.00	3.00	82	214.00	1.00
5	57.00	33.93	31	98.00	5.00	57	140.00	1.00	83	219.00	1.00
6	58.00	2.00	32	99.00	2.00	58	143.00	26.92	84	223.00	4.00
7	59.00	10.01	33	101.00	8.01	59	144.00	3.00	85	224.00	1.00
8	67.00	6.01	34	102.00	1.00	60	149.00	3.00	86	227.00	9.01
9	68.00	2.00	35	107.00	2.00	61	151.00	1.00	87	228.00	2.00
10	69.00	23.92	36	109.00	4.00	62	152.00	1.00	88	229.00	2.00
11	70.00	6.01	37	110.00	1.00	63	153.00	2.00	89	235.00	2.00
12	71.00	10.91	38	111.00	8.01	64	157.00	4.00	90	237.00	1.00
13	72.00	1.00	39	112.00	1.00	65	158.00	1.00	91	241.00	17.92
14	74.00	100.00	40	113.00	1.00	66	163.00	1.00	92	242.00	3.00
15	75.00	20.92	41	115.00	5.00	67	165.00	1.00	93	250.00	1.00
16	76.00	1.00	42	116.00	2.00	68	167.00	1.00	94	251.00	1.00
17	79.00	2.00	43	121.00	4.00	69	171.00	3.00	95	253.00	3.00
18	80.00	1.00	44	122.00	1.00	70	172.00	1.00	96	254.00	1.00
19	81.00	6.01	45	123.00	3.00	71	177.00	1.00	97	255.00	10.91
20	82.00	2.00	46	124.00	1.00	72	181.00	1.00	98	256.00	2.00
21	83.00	18.92	47	125.00	5.00	73	185.00	15.91	99	269.00	1.00
22	84.00	5.00	48	126.00	1.00	74	186.00	3.00	100	284.00	23.92
23	85.00	5.00	49	127.00	1.00	75	195.00	1.00	101	285.00	6.01
24	87.00	67.97	50	129.00	10.01	76	199.00	15.91	102	286.00	1.00
25	88.00	6.01	51	130.00	3.00	77	200.00	2.00			
26	93.00	2.00	52	135.00	4.00	78	205.00	4.00			

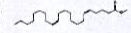


Compound Information

Entry:155787 Library:NIST11.LIB  
 Formula:C23H42O2 CAS:0-00-0 MolWeight:350 RetIndex:2491  
 CompName:Methyl 5,13-docosadienoate



No.	Mass	R.Int	No.	Mass	R.Int	No.	Mass	R.Int	No.	Mass	R.Int
1	51.00	1.00	45	104.00	2.00	89	149.00	14.91	133	205.00	3.00
2	52.00	1.00	46	105.00	4.00	90	150.00	17.92	134	206.00	2.00
3	53.00	9.01	47	106.00	3.00	91	151.00	9.01	135	207.00	2.00
4	54.00	24.92	48	107.00	11.91	92	152.00	7.01	136	208.00	4.00
5	55.00	73.98	49	108.00	15.91	93	153.00	3.00	137	209.00	4.00
6	56.00	9.01	50	109.00	42.94	94	154.00	4.00	138	210.00	3.00
7	57.00	18.92	51	110.00	27.93	95	155.00	1.00	139	211.00	1.00
8	58.00	1.00	52	111.00	14.91	96	157.00	1.00	140	215.00	1.00
9	59.00	10.01	53	112.00	2.00	97	159.00	3.00	141	219.00	2.00
10	65.00	5.00	54	113.00	2.00	98	160.00	1.00	142	220.00	2.00
11	66.00	6.01	55	114.00	2.00	99	161.00	3.00	143	221.00	3.00
12	67.00	83.99	56	115.00	6.01	100	162.00	1.00	144	222.00	4.00
13	68.00	31.93	57	116.00	1.00	101	163.00	10.01	145	223.00	3.00
14	69.00	43.94	58	117.00	2.00	102	164.00	16.92	146	224.00	2.00
15	70.00	6.01	59	118.00	1.00	103	165.00	7.01	147	233.00	1.00
16	71.00	8.01	60	119.00	4.00	104	166.00	5.00	148	234.00	3.00
17	72.00	1.00	61	120.00	3.00	105	167.00	2.00	149	235.00	4.00
18	73.00	2.00	62	121.00	17.92	106	168.00	3.00	150	236.00	5.00
19	74.00	35.93	63	122.00	11.91	107	169.00	1.00	151	237.00	2.00
20	75.00	5.00	64	123.00	23.92	108	171.00	1.00	152	238.00	1.00
21	76.00	1.00	65	124.00	15.91	109	173.00	4.00	153	247.00	1.00
22	77.00	6.01	66	125.00	7.01	110	174.00	1.00	154	248.00	1.00
23	78.00	4.00	67	126.00	3.00	111	175.00	2.00	155	249.00	1.00
24	79.00	33.93	68	127.00	2.00	112	176.00	1.00	156	250.00	1.00
25	80.00	35.93	69	128.00	2.00	113	177.00	7.01	157	251.00	1.00
26	81.00	100.00	70	129.00	6.01	114	178.00	9.01	158	252.00	1.00
27	82.00	67.97	71	130.00	1.00	115	179.00	4.00	159	261.00	1.00
28	83.00	38.94	72	131.00	3.00	116	180.00	5.00	160	262.00	1.00
29	84.00	10.91	73	132.00	2.00	117	181.00	3.00	161	264.00	1.00
30	85.00	10.01	74	133.00	4.00	118	182.00	3.00	162	265.00	1.00
31	86.00	1.00	75	134.00	2.00	119	183.00	1.00	163	274.00	1.00
32	87.00	8.01	76	135.00	18.92	120	185.00	1.00	164	275.00	1.00
33	88.00	1.00	77	136.00	14.91	121	187.00	2.00	165	276.00	6.01
34	91.00	8.01	78	137.00	13.91	122	188.00	1.00	166	277.00	1.00
35	92.00	3.00	79	138.00	10.01	123	189.00	1.00	167	289.00	1.00
36	93.00	18.92	80	139.00	4.00	124	191.00	4.00	168	290.00	1.00
37	94.00	29.93	81	140.00	9.01	125	192.00	4.00	169	300.00	1.00
38	95.00	74.98	82	141.00	3.00	126	193.00	3.00	170	301.00	6.01
39	96.00	71.97	83	142.00	1.00	127	194.00	4.00	171	302.00	1.00
40	97.00	33.93	84	143.00	3.00	128	195.00	4.00	172	318.00	7.01
41	98.00	8.01	85	145.00	2.00	129	196.00	4.00	173	319.00	3.00
42	99.00	6.01	86	146.00	2.00	130	197.00	1.00	174	350.00	11.91
43	100.00	1.00	87	147.00	3.00	131	201.00	1.00	175	351.00	4.00
44	101.00	3.00	88	148.00	1.00	132	203.00	1.00			

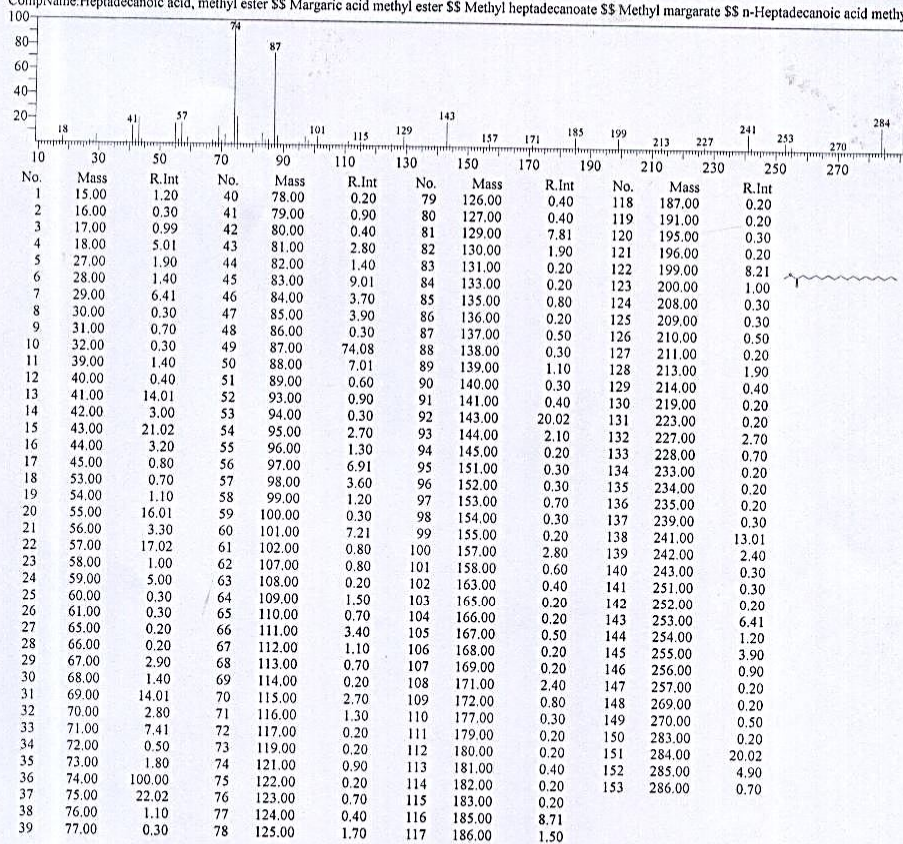


## Compound Information

Entry: 25176 Library: NIST11S.LIB

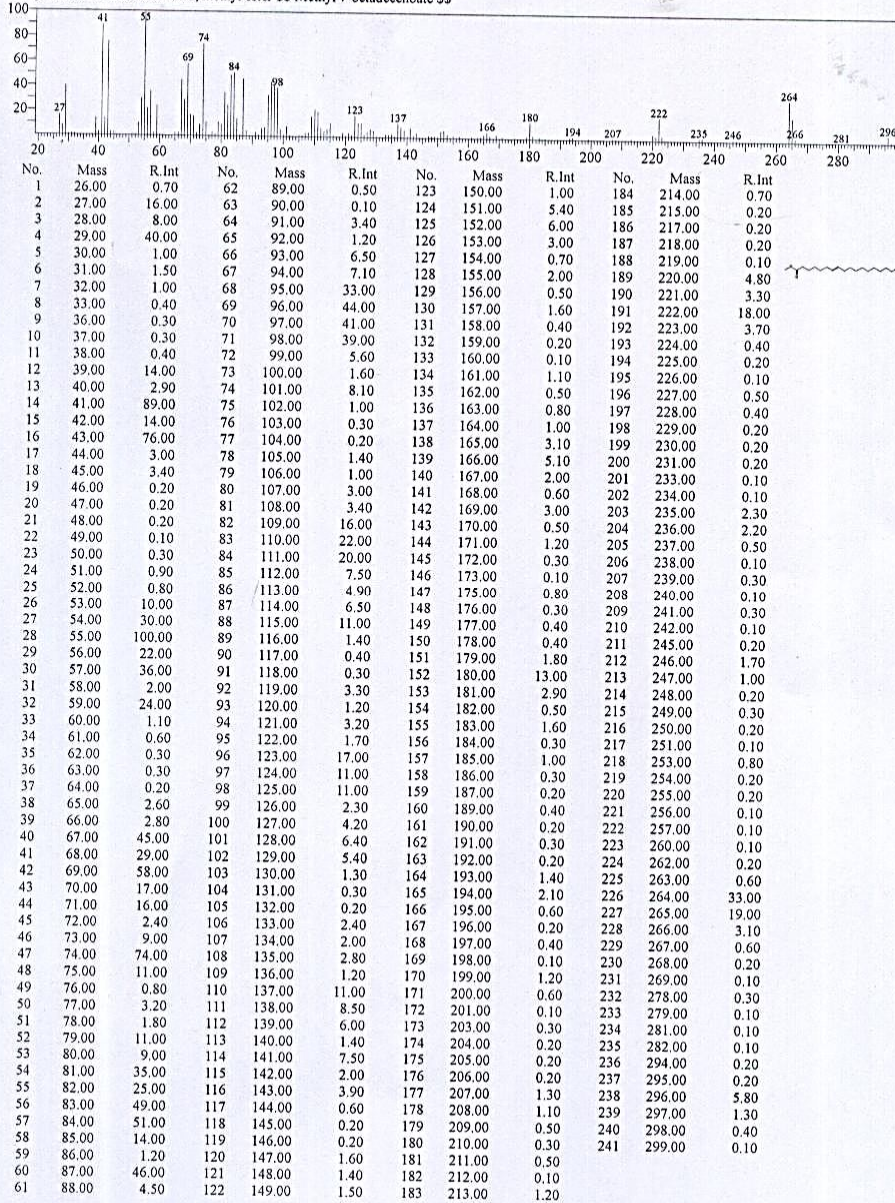
Formula: C<sub>18</sub>H<sub>36</sub>O<sub>2</sub> CAS: 1731-92-6 MolWeight: 284 RetIndex: 1978

CompName: Heptadecanoic acid, methyl ester \$\$ Margaric acid methyl ester \$\$ Methyl heptadecanoate \$\$ Methyl margarate \$\$ n-Heptadecanoic acid methyl



Compound Information

Entry:115402 Library:NIST11.LIB  
 Formula:C19H36O2 CAS:57396-98-2 MolWeight:296 RetIndex:2085  
 CompName:7-Octadecenoic acid, methyl ester \$S\$ Methyl 7-octadecenoate \$S\$

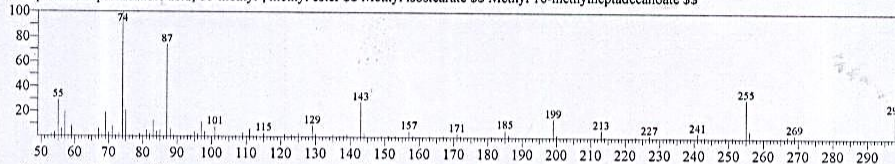


Compound Information

Entry:26034 Library:NIST11S.LIB

Formula:C19H38O2 CAS:5129-61-3 MolWeight:298 RetIndex:2013

CompName:Heptadecanoic acid, 16-methyl-, methyl ester \$\$ Methyl isostearate \$\$ Methyl 16-methylheptadecanoate \$\$



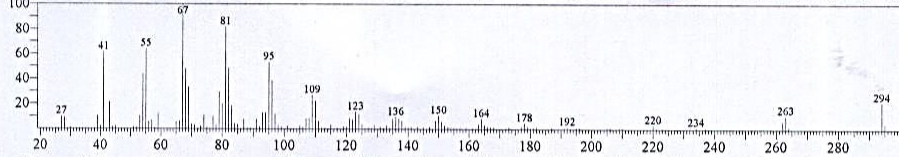
No.	Mass	R.Int	No.	Mass	R.Int	No.	Mass	R.Int	No.	Mass	R.Int
1	53.00	2.00	24	84.00	4.00	47	123.00	2.00	70	199.00	14.91
2	54.00	3.00	25	85.00	5.00	48	124.00	1.00	71	200.00	2.00
3	55.00	28.93	26	87.00	73.98	49	125.00	3.00	72	205.00	1.00
4	56.00	6.01	27	88.00	6.01	50	129.00	9.01	73	213.00	6.01
5	57.00	19.92	28	89.00	1.00	51	130.00	2.00	74	214.00	1.00
6	58.00	1.00	29	93.00	1.00	52	135.00	2.00	75	223.00	1.00
7	59.00	8.01	30	94.00	1.00	53	137.00	1.00	76	227.00	2.00
8	67.00	6.01	31	95.00	4.00	54	138.00	1.00	77	233.00	1.00
9	68.00	2.00	32	96.00	2.00	55	139.00	2.00	78	241.00	4.00
10	69.00	18.92	33	97.00	11.91	56	143.00	27.93	79	242.00	1.00
11	70.00	3.00	34	98.00	4.00	57	144.00	3.00	80	243.00	1.00
12	71.00	8.01	35	99.00	1.00	58	149.00	1.00	81	249.00	1.00
13	72.00	1.00	36	101.00	8.01	59	151.00	1.00	82	251.00	1.00
14	73.00	3.00	37	102.00	1.00	60	153.00	1.00	83	255.00	30.93
15	74.00	100.00	38	107.00	1.00	61	157.00	5.00	84	256.00	6.01
16	75.00	20.92	39	109.00	3.00	62	158.00	1.00	85	257.00	1.00
17	76.00	1.00	40	110.00	1.00	63	163.00	1.00	86	265.00	1.00
18	77.00	1.00	41	111.00	6.01	64	167.00	1.00	87	267.00	2.00
19	79.00	2.00	42	112.00	1.00	65	171.00	3.00	88	269.00	3.00
20	80.00	1.00	43	113.00	1.00	66	172.00	1.00	89	270.00	1.00
21	81.00	5.00	44	115.00	3.00	67	181.00	1.00	90	298.00	19.92
22	82.00	2.00	45	116.00	1.00	68	185.00	6.01	91	299.00	5.00
23	83.00	12.91	46	121.00	2.00	69	186.00	2.00	92	300.00	1.00

Compound Information

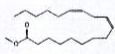
Entry:25809 Library:NIST11S.LIB

Formula:C19H34O2 CAS:112-63-0 MolWeight:294 RetIndex:2093

CompName:9,12-Octadecadienoic acid (Z,Z)-, methyl ester \$\$ Linoleic acid, methyl ester \$\$ Methyl cis,cis-9,12-octadecadienoate \$\$ Methyl linoleate \$\$ M



No.	Mass	R.Int	No.	Mass	R.Int	No.	Mass	R.Int	No.	Mass	R.Int
1	27.00	9.63	34	81.00	81.79	67	123.00	13.57	100	165.00	3.28
2	28.00	8.80	35	82.00	48.67	68	124.00	12.05	101	166.00	2.08
3	30.00	0.81	36	83.00	18.36	69	125.00	3.81	102	167.00	1.36
4	39.00	10.27	37	84.00	4.21	70	126.00	0.79	103	168.00	1.48
5	40.00	2.45	38	85.00	3.70	71	127.00	1.39	104	173.00	1.48
6	41.00	61.39	39	87.00	7.73	72	128.00	0.83	105	177.00	2.28
7	43.00	21.03	40	88.00	0.98	73	129.00	2.74	106	178.00	4.91
8	44.00	1.66	41	89.00	0.88	74	131.00	1.66	107	179.00	1.97
9	45.00	2.45	42	91.00	7.85	75	132.00	0.74	108	180.00	0.92
10	51.00	1.41	43	92.00	2.10	76	133.00	2.72	109	181.00	1.28
11	52.00	1.41	44	93.00	12.97	77	134.00	1.28	110	182.00	1.12
12	53.00	10.29	45	94.00	12.79	78	135.00	8.25	111	187.00	0.98
13	54.00	44.25	46	95.00	53.49	79	136.00	9.38	112	191.00	1.61
14	55.00	64.15	47	96.00	38.56	80	137.00	8.29	113	192.00	1.74
15	56.00	5.73	48	97.00	12.05	81	138.00	6.64	114	193.00	0.88
16	57.00	6.57	49	98.00	3.21	82	139.00	2.25	115	195.00	1.16
17	58.00	0.72	50	99.00	2.23	83	140.00	1.45	116	196.00	1.27
18	59.00	12.85	51	101.00	2.34	84	141.00	1.77	117	205.00	1.07
19	65.00	5.33	52	105.00	2.57	85	143.00	1.81	118	206.00	0.99
20	66.00	6.31	53	106.00	1.68	86	145.00	1.16	119	209.00	0.94
21	67.00	100.00	54	107.00	8.09	87	147.00	1.83	120	210.00	0.92
22	68.00	48.08	55	108.00	8.78	88	149.00	6.46	121	220.00	3.23
23	69.00	33.05	56	109.00	26.98	89	150.00	10.61	122	221.00	0.88
24	70.00	3.86	57	110.00	22.37	90	151.00	6.04	123	223.00	0.87
25	71.00	2.95	58	111.00	6.06	91	152.00	2.97	124	234.00	1.41
26	73.00	2.28	59	112.00	1.05	92	153.00	1.96	125	237.00	0.74
27	74.00	11.08	60	113.00	1.07	93	154.00	1.65	126	262.00	6.40
28	75.00	1.59	61	115.00	3.43	94	155.00	0.96	127	263.00	10.81
29	76.00	0.76	62	117.00	0.96	95	157.00	1.01	128	264.00	2.28
30	77.00	9.98	63	119.00	2.19	96	159.00	1.16	129	294.00	21.43
31	78.00	3.66	64	120.00	2.06	97	161.00	0.76	130	295.00	4.61
32	79.00	29.25	65	121.00	8.43	98	163.00	3.90			
33	80.00	20.03	66	122.00	7.78	99	164.00	8.20			

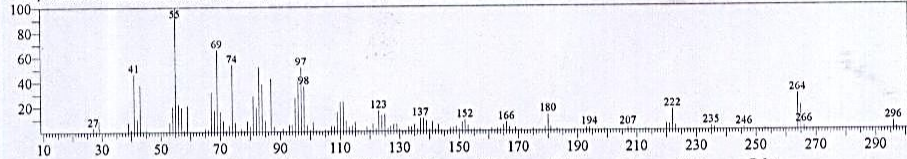


Compound Information

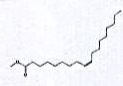
Entry:115420 Library:NIST11.LIB

Formula:C19H36O2 CAS:112-62-9 MolWeight:296 RetIndex:2085

CompName:9-Octadecenoic acid (Z)-, methyl ester \$\$ Oleic acid, methyl ester \$\$ Emery oleic acid ester 2301 \$\$ Methyl cis-9-octadecenoate \$\$ Methyl oleate



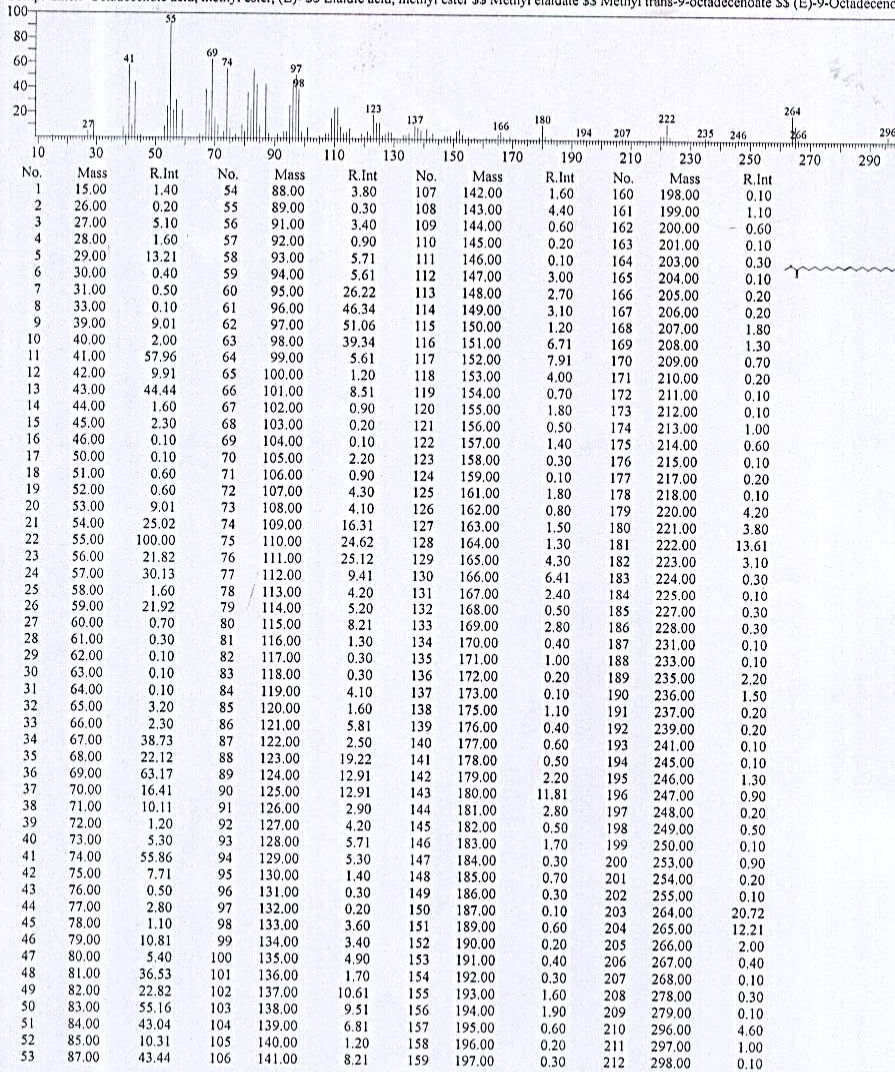
No.	Mass	R.Int	No.	Mass	R.Int	No.	Mass	R.Int	No.	Mass	R.Int
1	15.00	0.70	55	91.00	2.50	109	145.00	0.20	163	203.00	0.50
2	26.00	0.20	56	92.00	0.70	110	146.00	0.10	164	204.00	0.20
3	27.00	3.50	57	93.00	5.30	111	147.00	2.60	165	205.00	0.20
4	28.00	1.00	58	94.00	5.50	112	148.00	2.90	166	206.00	0.20
5	29.00	9.01	59	95.00	26.92	113	149.00	3.80	167	207.00	2.40
6	30.00	0.30	60	96.00	43.64	114	150.00	1.60	168	208.00	1.80
7	31.00	0.40	61	97.00	51.26	115	151.00	7.31	169	209.00	0.90
8	33.00	0.10	62	98.00	36.13	116	152.00	8.91	170	210.00	0.30
9	39.00	7.61	63	99.00	5.00	117	153.00	4.70	171	211.00	0.20
10	40.00	1.80	64	100.00	1.10	118	154.00	0.80	172	212.00	0.10
11	41.00	46.34	65	101.00	7.51	119	155.00	1.90	173	213.00	1.10
12	42.00	10.31	66	102.00	0.90	120	156.00	0.40	174	214.00	0.70
13	43.00	37.93	67	103.00	0.20	121	157.00	1.80	175	215.00	0.10
14	44.00	1.40	68	104.00	0.10	122	158.00	0.40	176	217.00	0.30
15	45.00	1.90	69	105.00	1.30	123	159.00	0.10	177	218.00	0.10
16	50.00	0.10	70	106.00	0.60	124	161.00	2.00	178	220.00	4.90
17	51.00	0.60	71	107.00	4.00	125	162.00	1.00	179	221.00	4.70
18	52.00	0.50	72	108.00	3.90	126	163.00	2.10	180	222.00	16.41
19	53.00	7.71	73	109.00	15.71	127	164.00	1.50	181	223.00	3.60
20	54.00	20.02	74	110.00	23.42	128	165.00	4.70	182	224.00	0.40
21	55.00	100.00	75	111.00	23.92	129	166.00	6.81	183	225.00	0.20
22	56.00	21.92	76	112.00	8.91	130	167.00	2.90	184	227.00	0.40
23	57.00	19.52	77	113.00	3.90	131	168.00	0.60	185	228.00	0.40
24	58.00	1.20	78	114.00	4.70	132	169.00	2.80	186	229.00	0.10
25	59.00	20.82	79	115.00	7.71	133	170.00	0.50	187	231.00	0.10
26	60.00	0.70	80	116.00	1.20	134	171.00	1.20	188	233.00	0.10
27	61.00	0.20	81	117.00	0.20	135	172.00	0.30	189	235.00	3.00
28	62.00	0.10	82	118.00	0.30	136	173.00	0.10	190	236.00	1.90
29	63.00	0.10	83	119.00	3.60	137	175.00	1.70	191	237.00	0.30
30	64.00	0.10	84	120.00	1.40	138	176.00	0.50	192	239.00	0.20
31	65.00	2.70	85	121.00	5.81	139	177.00	1.10	193	240.00	0.10
32	66.00	2.00	86	122.00	2.50	140	178.00	0.60	194	241.00	0.20
33	67.00	31.73	87	123.00	16.41	141	179.00	2.80	195	245.00	0.20
34	68.00	17.12	88	124.00	12.71	142	180.00	13.01	196	246.00	1.80
35	69.00	65.67	89	125.00	13.31	143	181.00	3.30	197	247.00	0.80
36	70.00	16.11	90	126.00	2.80	144	182.00	0.60	198	248.00	0.10
37	71.00	8.61	91	127.00	3.90	145	183.00	1.90	199	249.00	0.50
38	72.00	1.00	92	128.00	5.50	146	184.00	0.30	200	250.00	0.10
39	73.00	5.10	93	129.00	5.71	147	185.00	0.90	201	253.00	1.20
40	74.00	53.56	94	130.00	1.60	148	186.00	0.30	202	254.00	0.20
41	75.00	7.31	95	131.00	0.30	149	187.00	0.10	203	255.00	0.10
42	76.00	0.50	96	132.00	0.20	150	189.00	1.00	204	264.00	28.73
43	77.00	2.50	97	133.00	3.50	151	190.00	0.30	205	265.00	19.42
44	78.00	0.90	98	134.00	3.40	152	191.00	0.50	206	266.00	3.40
45	79.00	8.51	99	135.00	5.50	153	192.00	0.30	207	267.00	0.60
46	80.00	4.10	100	136.00	1.80	154	193.00	2.30	208	268.00	0.10
47	81.00	28.43	101	137.00	10.21	155	194.00	2.40	209	278.00	0.40
48	82.00	19.72	102	138.00	10.21	156	195.00	0.90	210	279.00	0.10
49	83.00	51.66	103	139.00	8.31	157	196.00	0.30	211	294.00	0.10
50	84.00	37.93	104	140.00	1.40	158	197.00	0.50	212	296.00	6.01
51	85.00	8.81	105	141.00	7.71	159	198.00	0.10	213	297.00	1.50
52	87.00	42.14	106	142.00	1.50	160	199.00	1.30	214	298.00	0.20
53	88.00	3.90	107	143.00	5.30	161	200.00	0.70			
54	89.00	0.30	108	144.00	0.80	162	201.00	0.10			





Compound Information

Entry:25930 Library:NIST11S.LIB  
 Formula:C19H36O2 CAS:1937-62-8 MolWeight:296 RetIndex:2085  
 CompName:9-Octadecenoic acid, methyl ester, (E)- \$\$ Elaidic acid, methyl ester \$\$ Methyl elaidate \$\$ Methyl trans-9-octadecenoate \$\$ (E)-9-Octadecenoic

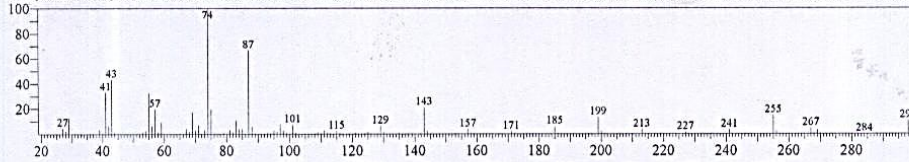


Compound Information

Entry:26031 Library:NIST11S.LIB

Formula:C19H38O2 CAS:112-61-8 MolWeight:298 RetIndex:2077

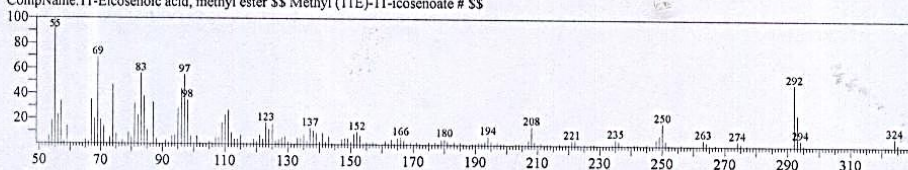
CompName:Methyl stearate SS Octadecanoic acid, methyl ester SS Stearic acid, methyl ester SS n-Octadecanoic acid, methyl ester SS Kemester 9718 SS Me



No.	Mass	R.Int	No.	Mass	R.Int	No.	Mass	R.Int	No.	Mass	R.Int
1	25.00	0.09	48	81.00	3.24	95	134.00	0.07	142	196.00	0.27
2	26.00	0.15	49	82.00	1.24	96	135.00	0.76	143	197.00	0.11
3	27.00	4.59	50	83.00	10.42	97	137.00	0.44	144	199.00	13.34
4	28.00	1.93	51	84.00	4.10	98	138.00	0.27	145	200.00	1.94
5	29.00	12.72	52	85.00	3.88	99	139.00	0.67	146	201.00	0.37
6	30.00	0.39	53	86.00	0.29	100	140.00	0.21	147	204.00	0.07
7	31.00	0.73	54	87.00	66.63	101	141.00	0.28	148	205.00	0.03
8	32.00	0.02	55	88.00	5.89	102	143.00	21.04	149	208.00	0.18
9	33.00	0.33	56	89.00	0.53	103	144.00	2.31	150	209.00	0.04
10	36.00	0.09	57	91.00	0.09	104	145.00	0.26	151	213.00	3.68
11	38.00	0.02	58	92.00	0.21	105	146.00	0.08	152	214.00	0.75
12	39.00	3.17	59	93.00	0.77	106	147.00	0.05	153	215.00	0.16
13	40.00	0.76	60	94.00	0.51	107	148.00	0.16	154	217.00	0.04
14	41.00	33.12	61	95.00	2.55	108	149.00	0.46	155	219.00	0.09
15	42.00	6.34	62	96.00	1.71	109	150.00	0.07	156	221.00	0.09
16	43.00	43.29	63	97.00	7.90	110	151.00	0.23	157	222.00	0.21
17	44.00	1.43	64	98.00	2.90	111	152.00	0.01	158	223.00	0.18
18	45.00	1.19	65	99.00	0.82	112	153.00	0.36	159	227.00	1.61
19	51.00	0.05	66	100.00	0.46	113	154.00	0.25	160	228.00	0.36
20	52.00	0.20	67	101.00	7.53	114	155.00	0.07	161	233.00	0.03
21	53.00	1.38	68	102.00	0.81	115	156.00	0.06	162	237.00	0.15
22	54.00	2.65	69	103.00	0.09	116	157.00	3.77	163	241.00	3.43
23	55.00	32.55	70	107.00	0.66	117	158.00	0.57	164	242.00	0.58
24	56.00	6.22	71	108.00	0.38	118	159.00	0.11	165	246.00	0.05
25	57.00	19.60	72	109.00	1.41	119	163.00	0.28	166	247.00	0.09
26	58.00	1.38	73	110.00	0.52	120	164.00	0.05	167	249.00	0.05
27	59.00	9.14	74	111.00	2.80	121	165.00	0.18	168	251.00	0.04
28	60.00	0.12	75	112.00	0.98	122	166.00	0.08	169	253.00	0.14
29	61.00	0.31	76	113.00	0.63	123	167.00	0.32	170	255.00	14.68
30	62.00	0.06	77	114.00	0.08	124	168.00	0.08	171	256.00	2.69
31	63.00	0.05	78	115.00	2.38	125	170.00	0.09	172	257.00	0.31
32	65.00	0.49	79	116.00	0.85	126	171.00	2.00	173	258.00	0.04
33	66.00	0.09	80	117.00	0.16	127	172.00	0.57	174	264.00	0.27
34	67.00	4.30	81	118.00	0.06	128	175.00	0.07	175	265.00	0.14
35	68.00	1.76	82	119.00	0.12	129	177.00	0.19	176	266.00	0.07
36	69.00	17.02	83	121.00	0.91	130	179.00	0.05	177	267.00	4.63
37	70.00	2.79	84	122.00	0.25	131	180.00	0.06	178	268.00	0.95
38	71.00	7.10	85	123.00	0.67	132	181.00	0.19	179	269.00	3.03
39	72.00	0.44	86	124.00	0.35	133	182.00	0.12	180	270.00	0.68
40	73.00	2.96	87	125.00	1.74	134	183.00	0.06	181	283.00	0.06
41	74.00	100.00	88	126.00	0.46	135	185.00	5.99	182	284.00	0.07
42	75.00	19.43	89	127.00	0.41	136	186.00	1.29	183	298.00	10.37
43	76.00	1.07	90	128.00	0.12	137	187.00	0.23	184	299.00	2.55
44	77.00	0.23	91	129.00	6.45	138	189.00	0.05	185	300.00	0.18
45	78.00	0.21	92	130.00	1.90	139	191.00	0.18			
46	79.00	1.45	93	131.00	0.11	140	194.00	0.11			
47	80.00	0.30	94	133.00	0.01	141	195.00	0.04			

Compound Information

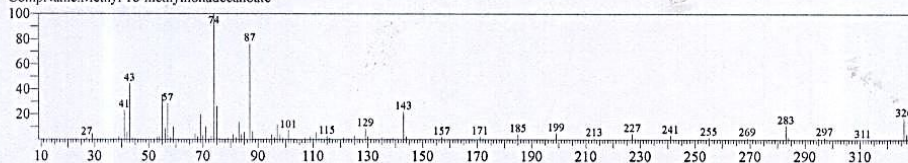
Entry:27420 Library:NIST11S.LIB  
 Formula:C21H40O2 CAS:3946-08-5 MolWeight:324 RetIndex:2284  
 CompName:11-Eicosenoic acid, methyl ester \$\$ Methyl (11E)-11-icosenoate # \$\$



No.	Mass	R.Int	No.	Mass	R.Int	No.	Mass	R.Int	No.	Mass	R.Int
1	51.00	1.00	46	105.00	2.00	91	153.00	7.01	136	209.00	3.00
2	52.00	1.00	47	106.00	1.00	92	154.00	1.00	137	210.00	1.00
3	53.00	6.01	48	107.00	5.00	93	155.00	2.00	138	211.00	2.00
4	54.00	17.92	49	108.00	5.00	94	156.00	1.00	139	213.00	1.00
5	55.00	100.00	50	109.00	16.92	95	157.00	2.00	140	214.00	1.00
6	56.00	22.92	51	110.00	22.92	96	158.00	1.00	141	217.00	1.00
7	57.00	33.93	52	111.00	26.92	97	161.00	3.00	142	219.00	1.00
8	58.00	2.00	53	112.00	9.01	98	162.00	1.00	143	220.00	1.00
9	59.00	13.91	54	113.00	4.00	99	163.00	4.00	144	221.00	4.00
10	60.00	1.00	55	114.00	4.00	100	164.00	1.00	145	222.00	4.00
11	65.00	3.00	56	115.00	7.01	101	165.00	5.00	146	223.00	1.00
12	66.00	2.00	57	116.00	1.00	102	166.00	6.01	147	225.00	1.00
13	67.00	34.93	58	117.00	1.00	103	167.00	4.00	148	227.00	1.00
14	68.00	19.92	59	118.00	1.00	104	168.00	1.00	149	228.00	1.00
15	69.00	68.97	60	119.00	4.00	105	169.00	2.00	150	234.00	1.00
16	70.00	18.92	61	120.00	2.00	106	171.00	2.00	151	235.00	5.00
17	71.00	13.91	62	121.00	7.01	107	172.00	1.00	152	236.00	4.00
18	72.00	1.00	63	122.00	4.00	108	175.00	2.00	153	237.00	1.00
19	73.00	5.00	64	123.00	16.92	109	176.00	1.00	154	239.00	1.00
20	74.00	46.94	65	124.00	11.91	110	177.00	2.00	155	241.00	1.00
21	75.00	8.01	66	125.00	15.91	111	178.00	1.00	156	242.00	1.00
22	76.00	1.00	67	126.00	3.00	112	179.00	4.00	157	245.00	1.00
23	77.00	3.00	68	127.00	4.00	113	180.00	5.00	158	248.00	5.00
24	78.00	1.00	69	128.00	5.00	114	181.00	3.00	159	249.00	8.01
25	79.00	9.01	70	129.00	6.01	115	182.00	1.00	160	250.00	17.92
26	80.00	5.00	71	130.00	2.00	116	183.00	2.00	161	251.00	4.00
27	81.00	31.93	72	131.00	1.00	117	185.00	2.00	162	252.00	1.00
28	82.00	22.92	73	133.00	5.00	118	186.00	1.00	163	256.00	1.00
29	83.00	55.96	74	134.00	5.00	119	189.00	1.00	164	263.00	5.00
30	84.00	37.93	75	135.00	8.01	120	190.00	1.00	165	264.00	3.00
31	85.00	10.91	76	136.00	3.00	121	191.00	2.00	166	265.00	1.00
32	87.00	32.93	77	137.00	12.91	122	192.00	2.00	167	267.00	1.00
33	88.00	4.00	78	138.00	10.91	123	193.00	3.00	168	274.00	4.00
34	91.00	3.00	79	139.00	9.01	124	194.00	7.01	169	275.00	2.00
35	92.00	1.00	80	140.00	2.00	125	195.00	3.00	170	277.00	1.00
36	93.00	6.01	81	141.00	9.01	126	196.00	1.00	171	281.00	1.00
37	94.00	7.01	82	142.00	2.00	127	197.00	2.00	172	292.00	48.94
38	95.00	27.93	83	143.00	6.01	128	198.00	1.00	173	293.00	24.92
39	96.00	43.94	84	144.00	1.00	129	199.00	1.00	174	294.00	5.00
40	97.00	54.96	85	147.00	4.00	130	203.00	1.00	175	295.00	1.00
41	98.00	34.93	86	148.00	5.00	131	204.00	1.00	176	324.00	7.01
42	99.00	6.01	87	149.00	5.00	132	205.00	1.00	177	325.00	2.00
43	100.00	1.00	88	150.00	2.00	133	206.00	1.00			
44	101.00	6.01	89	151.00	8.01	134	207.00	4.00			
45	102.00	1.00	90	152.00	10.01	135	208.00	14.91			

Compound Information

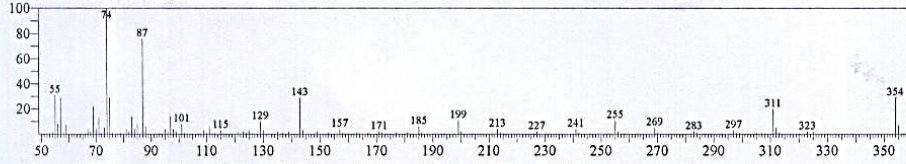
Entry:138745 Library:NIST11.LIB  
 Formula:C21H42O2 CAS:0-00-0 MolWeight:326 RetIndex:2212  
 CompName:Methyl 18-methylnonadecanoate



No.	Mass	R.Int	No.	Mass	R.Int	No.	Mass	R.Int	No.	Mass	R.Int
1	15.00	0.30	47	85.00	5.71	93	140.00	0.20	139	214.00	0.30
2	26.00	0.10	48	87.00	76.48	94	141.00	0.20	140	219.00	0.10
3	27.00	1.70	49	88.00	6.51	95	143.00	22.12	141	221.00	0.10
4	28.00	0.40	50	89.00	0.50	96	144.00	2.20	142	223.00	0.20
5	29.00	4.60	51	91.00	0.20	97	145.00	0.20	143	224.00	0.10
6	30.00	0.10	52	92.00	0.10	98	149.00	0.90	144	227.00	4.70
7	31.00	0.20	53	93.00	1.00	99	150.00	0.10	145	228.00	0.80
8	33.00	0.10	54	94.00	0.30	100	151.00	0.30	146	229.00	0.10
9	39.00	2.40	55	95.00	3.80	101	152.00	0.10	147	233.00	0.10
10	40.00	0.70	56	96.00	1.50	102	153.00	0.80	148	237.00	0.10
11	41.00	23.22	57	97.00	11.91	103	154.00	0.10	149	238.00	0.10
12	42.00	5.81	58	98.00	4.20	104	155.00	0.10	150	241.00	3.40
13	43.00	44.44	59	99.00	1.30	105	157.00	2.10	151	242.00	0.60
14	44.00	1.60	60	100.00	0.40	106	158.00	0.40	152	243.00	0.10
15	45.00	1.00	61	101.00	7.21	107	163.00	0.60	153	250.00	0.20
16	51.00	0.10	62	102.00	0.80	108	164.00	0.10	154	251.00	0.20
17	52.00	0.10	63	103.00	0.10	109	165.00	0.20	155	252.00	0.20
18	53.00	1.80	64	105.00	0.10	110	166.00	0.10	156	255.00	1.90
19	54.00	2.40	65	107.00	1.00	111	167.00	0.50	157	256.00	0.40
20	55.00	35.73	66	108.00	0.20	112	168.00	0.10	158	261.00	0.20
21	56.00	8.51	67	109.00	2.30	113	169.00	0.10	159	262.00	0.10
22	57.00	28.43	68	110.00	0.80	114	171.00	2.40	160	269.00	1.60
23	58.00	1.90	69	111.00	5.40	115	172.00	0.50	161	270.00	0.50
24	59.00	9.61	70	112.00	1.10	116	173.00	0.10	162	271.00	0.70
25	60.00	0.40	71	113.00	0.80	117	177.00	0.30	163	272.00	0.10
26	61.00	0.30	72	114.00	0.20	118	179.00	0.10	164	275.00	0.10
27	65.00	0.30	73	115.00	2.70	119	180.00	0.10	165	276.00	0.10
28	66.00	0.20	74	116.00	1.30	120	181.00	0.30	166	277.00	0.60
29	67.00	4.50	75	117.00	0.10	121	182.00	0.10	167	278.00	0.10
30	68.00	2.00	76	119.00	0.10	122	185.00	4.30	168	279.00	0.40
31	69.00	19.42	77	121.00	1.40	123	186.00	0.70	169	280.00	0.10
32	70.00	3.40	78	122.00	0.20	124	187.00	0.10	170	283.00	11.11
33	71.00	9.91	79	123.00	1.30	125	191.00	0.20	171	284.00	2.30
34	72.00	0.70	80	124.00	0.40	126	193.00	0.10	172	285.00	0.30
35	73.00	2.60	81	125.00	2.60	127	194.00	0.10	173	293.00	0.20
36	74.00	100.00	82	126.00	0.40	128	195.00	0.30	174	294.00	0.10
37	75.00	26.12	83	127.00	0.40	129	196.00	0.10	175	295.00	1.30
38	76.00	1.20	84	129.00	8.61	130	199.00	5.10	176	296.00	0.30
39	77.00	0.40	85	130.00	2.20	131	200.00	0.70	177	297.00	1.80
40	78.00	0.10	86	131.00	0.20	132	201.00	0.10	178	298.00	0.40
41	79.00	1.20	87	133.00	0.10	133	205.00	0.10	179	311.00	0.30
42	80.00	0.40	88	135.00	1.40	134	207.00	0.10	180	312.00	0.10
43	81.00	4.10	89	136.00	0.20	135	208.00	0.10	181	326.00	17.12
44	82.00	1.60	90	137.00	0.60	136	209.00	0.20	182	327.00	4.20
45	83.00	13.41	91	138.00	0.20	137	210.00	0.10	183	328.00	0.50
46	84.00	4.30	92	139.00	1.30	138	213.00	1.30	184	329.00	0.10

Compound Information

Entry:158428 Library:NIST11.LIB  
 Formula:C23H46O2 CAS:0-00-0 MolWeight:354 RetIndex:2411  
 CompName:Methyl 20-methyl-heneicosanoate



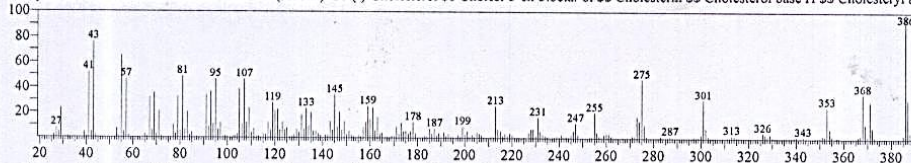
No.	Mass	R.Int	No.	Mass	R.Int	No.	Mass	R.Int	No.	Mass	R.Int
1	53.00	1.00	24	87.00	75.98	47	126.00	1.00	70	214.00	1.00
2	54.00	2.00	25	88.00	6.01	48	129.00	10.01	71	227.00	2.00
3	55.00	30.93	26	89.00	1.00	49	130.00	3.00	72	241.00	4.00
4	56.00	8.01	27	93.00	1.00	50	135.00	2.00	73	242.00	1.00
5	57.00	28.93	28	95.00	4.00	51	137.00	1.00	74	255.00	10.91
6	58.00	2.00	29	96.00	2.00	52	139.00	2.00	75	256.00	2.00
7	59.00	7.01	30	97.00	13.91	53	143.00	28.93	76	269.00	5.00
8	67.00	4.00	31	98.00	4.00	54	144.00	3.00	77	270.00	1.00
9	68.00	2.00	32	99.00	2.00	55	149.00	2.00	78	283.00	2.00
10	69.00	21.92	33	101.00	8.01	56	153.00	1.00	79	284.00	1.00
11	70.00	4.00	34	102.00	1.00	57	157.00	4.00	80	297.00	3.00
12	71.00	12.91	35	107.00	1.00	58	158.00	1.00	81	298.00	1.00
13	72.00	1.00	36	109.00	3.00	59	163.00	1.00	82	299.00	1.00
14	73.00	5.00	37	110.00	1.00	60	167.00	1.00	83	305.00	1.00
15	74.00	100.00	38	111.00	6.01	61	171.00	2.00	84	307.00	1.00
16	75.00	28.93	39	112.00	1.00	62	172.00	1.00	85	311.00	19.92
17	76.00	1.00	40	113.00	1.00	63	177.00	1.00	86	312.00	5.00
18	79.00	1.00	41	115.00	3.00	64	181.00	1.00	87	313.00	1.00
19	81.00	4.00	42	116.00	1.00	65	185.00	6.01	88	323.00	2.00
20	82.00	2.00	43	121.00	2.00	66	186.00	1.00	89	325.00	2.00
21	83.00	13.91	44	123.00	2.00	67	199.00	10.91	90	354.00	28.93
22	84.00	4.00	45	124.00	1.00	68	200.00	2.00	91	355.00	7.01
23	85.00	8.01	46	125.00	3.00	69	213.00	4.00	92	357.00	1.00

Compound Information

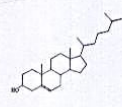
Entry:29422 Library:NIST11S.LIB

Formula:C27H46O CAS:57-88-5 MolWeight:386 RetIndex:2596

CompName:Cholesterol \$\$ Cholest-5-en-3-ol (3.beta.)- \$\$ (-)-Cholesterol \$\$ Cholest-5-en-3.beta.-ol \$\$ Cholesterin \$\$ Cholesterol base H \$\$ Cholesteryl al



No.	Mass	R.Int	No.	Mass	R.Int	No.	Mass	R.Int	No.	Mass	R.Int
1	26.00	1.91	72	129.00	6.66	143	201.00	5.51	214	281.00	0.31
2	27.00	7.36	73	130.00	4.47	144	202.00	1.39	215	282.00	0.25
3	28.00	4.41	74	131.00	17.73	145	203.00	2.38	216	283.00	1.37
4	29.00	23.23	75	132.00	6.81	146	204.00	1.06	217	284.00	0.66
5	31.00	0.90	76	133.00	23.25	147	205.00	4.12	218	285.00	0.56
6	32.00	0.89	77	134.00	9.54	148	206.00	3.50	219	286.00	1.01
7	39.00	4.47	78	135.00	19.62	149	207.00	2.35	220	287.00	1.57
8	40.00	1.00	79	136.00	5.51	150	208.00	0.89	221	288.00	1.01
9	41.00	52.09	80	137.00	5.51	151	210.00	0.30	222	289.00	0.39
10	42.00	4.63	81	138.00	3.38	152	211.00	1.18	223	290.00	0.27
11	43.00	76.04	82	139.00	2.00	153	212.00	1.09	224	295.00	0.24
12	44.00	2.42	83	141.00	2.25	154	213.00	25.36	225	296.00	0.24
13	53.00	7.19	84	142.00	2.44	155	214.00	6.92	226	297.00	0.71
14	54.00	1.27	85	143.00	12.98	156	215.00	5.72	227	298.00	0.53
15	55.00	65.14	86	144.00	6.25	157	216.00	1.45	228	299.00	1.04
16	56.00	4.58	87	145.00	34.06	158	217.00	3.37	229	300.00	2.61
17	57.00	46.37	88	146.00	8.71	159	218.00	1.63	230	301.00	30.26
18	58.00	2.27	89	147.00	20.41	160	219.00	3.52	231	302.00	8.30
19	65.00	2.76	90	148.00	6.21	161	220.00	2.64	232	303.00	1.32
20	66.00	1.26	91	149.00	12.96	162	221.00	0.88	233	305.00	0.18
21	67.00	31.81	92	150.00	2.54	163	222.00	0.27	234	309.00	0.15
22	68.00	5.79	93	151.00	5.45	164	223.00	0.34	235	311.00	0.99
23	69.00	35.45	94	152.00	1.92	165	225.00	0.81	236	312.00	0.60
24	70.00	2.79	95	153.00	0.99	166	226.00	0.36	237	313.00	2.47
25	71.00	21.13	96	154.00	0.61	167	227.00	4.63	238	314.00	2.15
26	72.00	1.22	97	155.00	1.79	168	228.00	6.99	239	315.00	1.07
27	77.00	9.94	98	156.00	1.26	169	229.00	7.15	240	316.00	0.71
28	78.00	2.90	99	157.00	8.37	170	230.00	1.85	241	317.00	0.47
29	79.00	32.79	100	158.00	12.20	171	231.00	16.53	242	324.00	0.23
30	80.00	5.16	101	159.00	25.15	172	232.00	5.38	243	325.00	0.63
31	81.00	48.60	102	160.00	14.94	173	233.00	3.12	244	326.00	4.46
32	82.00	6.69	103	161.00	23.78	174	234.00	1.83	245	327.00	3.13
33	83.00	20.28	104	162.00	5.81	175	235.00	1.27	246	328.00	1.95
34	84.00	1.94	105	163.00	16.52	176	237.00	0.35	247	329.00	3.18
35	85.00	4.26	106	164.00	3.61	177	238.00	0.56	248	330.00	1.12
36	87.00	0.71	107	165.00	3.94	178	239.00	1.45	249	331.00	0.55
37	91.00	33.81	108	166.00	1.04	179	240.00	0.72	250	332.00	0.16
38	92.00	8.69	109	167.00	0.78	180	241.00	2.88	251	336.00	0.86
39	93.00	36.41	110	168.00	0.39	181	242.00	1.17	252	337.00	0.77
40	94.00	10.92	111	169.00	1.67	182	243.00	0.97	253	339.00	0.93
41	95.00	46.40	112	170.00	1.15	183	244.00	0.56	254	340.00	1.40
42	96.00	6.33	113	171.00	8.71	184	245.00	2.84	255	342.00	1.23
43	97.00	11.58	114	172.00	3.22	185	246.00	5.68	256	343.00	1.41
44	98.00	1.08	115	173.00	11.83	186	247.00	11.84	257	344.00	0.72
45	99.00	1.24	116	174.00	5.18	187	248.00	3.10	258	345.00	0.20
46	100.00	0.85	117	175.00	5.65	188	249.00	0.56	259	347.00	0.15
47	103.00	1.77	118	176.00	3.14	189	250.00	0.19	260	348.00	0.20
48	104.00	2.98	119	177.00	5.11	190	252.00	0.18	261	350.00	0.92
49	105.00	38.49	120	178.00	12.52	191	253.00	0.79	262	351.00	2.36
50	106.00	10.38	121	179.00	3.85	192	254.00	1.06	263	352.00	1.63
51	107.00	46.45	122	180.00	0.70	193	255.00	20.04	264	353.00	24.92
52	108.00	11.98	123	181.00	0.62	194	256.00	4.36	265	354.00	7.58
53	109.00	23.43	124	182.00	0.59	195	257.00	1.89	266	355.00	1.78
54	110.00	3.93	125	183.00	1.54	196	258.00	0.67	267	357.00	1.24
55	111.00	7.16	126	184.00	1.20	197	259.00	2.71	268	358.00	0.83
56	112.00	1.07	127	185.00	7.32	198	260.00	3.68	269	359.00	0.44
57	113.00	1.23	128	186.00	3.44	199	261.00	3.40	270	362.00	0.27
58	115.00	2.94	129	187.00	7.46	200	262.00	1.67	271	363.00	0.25
59	116.00	2.59	130	188.00	2.28	201	263.00	0.37	272	364.00	0.38
60	117.00	12.51	131	189.00	3.62	202	264.00	0.18	273	365.00	0.48
61	118.00	6.59	132	190.00	1.19	203	267.00	0.31	274	366.00	1.35
62	119.00	27.70	133	191.00	4.47	204	269.00	0.64	275	367.00	2.20
63	120.00	21.19	134	192.00	1.64	205	270.00	0.35	276	368.00	35.17
64	121.00	22.38	135	193.00	3.33	206	271.00	1.83	277	369.00	11.34
65	122.00	6.19	136	194.00	0.90	207	272.00	1.75	278	370.00	2.75
66	123.00	12.64	137	195.00	0.56	208	273.00	17.09	279	371.00	28.98
67	124.00	6.31	138	196.00	0.48	209	274.00	13.65	280	372.00	8.61
68	125.00	7.64	139	197.00	2.31	210	275.00	46.72	281	373.00	1.52
69	126.00	1.21	140	198.00	1.09	211	276.00	10.40	282	375.00	0.22
70	127.00	1.23	141	199.00	8.95	212	277.00	1.49	283	377.00	0.30
71	128.00	2.62	142	200.00	2.72	213	278.00	0.26	284	378.00	0.16

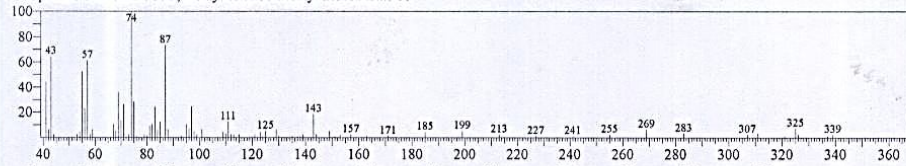


## Compound Information

Entry:28978 Library:NIST11S.LIB

Formula:C<sub>24</sub>H<sub>48</sub>O<sub>2</sub> CAS:2433-97-8 MolWeight:368 RetIndex:2574

CompName:Tricosanoic acid, methyl ester \$\$ Methyl tricosanoate \$\$



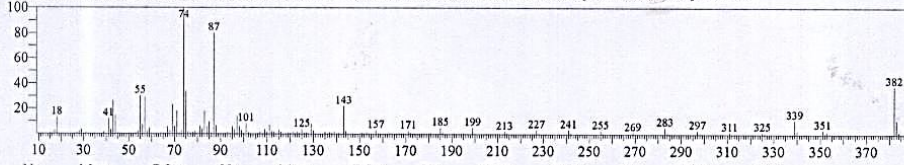
No.	Mass	R.Int	No.	Mass	R.Int	No.	Mass	R.Int	No.	Mass	R.Int
1	41.00	44.40	21	76.00	1.20	41	112.00	2.40	61	171.00	1.20
2	42.00	6.40	22	79.00	2.40	42	113.00	2.40	62	185.00	4.40
3	43.00	64.41	23	80.00	1.20	43	115.00	2.40	63	199.00	5.20
4	44.00	2.40	24	81.00	9.20	44	121.00	2.40	64	213.00	2.40
5	53.00	2.40	25	82.00	10.40	45	123.00	4.40	65	227.00	1.20
6	54.00	4.40	26	83.00	24.40	46	124.00	1.20	66	241.00	1.20
7	55.00	52.41	27	84.00	6.40	47	125.00	5.20	67	255.00	2.40
8	56.00	23.20	28	85.00	12.40	48	129.00	6.40	68	269.00	6.40
9	57.00	61.21	29	87.00	73.21	49	130.00	1.20	69	283.00	3.20
10	58.00	2.40	30	88.00	6.40	50	135.00	1.20	70	307.00	2.40
11	59.00	6.40	31	93.00	1.20	51	137.00	1.20	71	311.00	3.20
12	67.00	10.40	32	95.00	10.40	52	138.00	1.20	72	321.00	1.20
13	68.00	5.20	33	96.00	7.20	53	139.00	2.40	73	325.00	7.20
14	69.00	36.40	34	97.00	24.40	54	143.00	18.40	74	326.00	2.40
15	70.00	13.20	35	98.00	5.20	55	144.00	2.40	75	337.00	1.20
16	71.00	26.40	36	99.00	2.40	56	149.00	5.20	76	339.00	2.40
17	72.00	1.20	37	101.00	6.40	57	151.00	1.20	77	368.00	24.40
18	73.00	2.40	38	109.00	4.40	58	153.00	2.40	78	369.00	7.20
19	74.00	100.00	39	110.00	3.20	59	157.00	2.40			
20	75.00	28.40	40	111.00	12.40	60	163.00	1.20			

Compound Information

Entry:29299 Library:NIST11S.LIB

Formula:C25H50O2 CAS:2442-49-1 MolWeight:382 RetIndex:2674

CompName:Tetracosanoic acid, methyl ester SS Methyl lignocerate SS Methyl tetracosanoate SS Lignoceric acid,methyl ester SS



No.	Mass	R.Int	No.	Mass	R.Int	No.	Mass	R.Int	No.	Mass	R.Int
1	15.00	0.40	65	97.00	14.01	129	167.00	1.10	193	249.00	0.20
2	16.00	0.30	66	98.00	5.91	130	168.00	0.50	194	250.00	0.30
3	17.00	3.30	67	99.00	2.90	131	169.00	0.60	195	251.00	0.40
4	18.00	13.01	68	100.00	0.90	132	170.00	0.20	196	252.00	0.30
5	26.00	0.20	69	101.00	8.31	133	171.00	2.60	197	253.00	0.20
6	27.00	1.20	70	102.00	1.20	134	172.00	0.80	198	255.00	2.90
7	28.00	2.30	71	103.00	0.30	135	173.00	0.30	199	256.00	0.90
8	29.00	3.40	72	106.00	0.40	136	175.00	0.20	200	257.00	0.30
9	30.00	0.40	73	107.00	1.60	137	176.00	0.20	201	261.00	0.20
10	31.00	1.30	74	108.00	0.50	138	177.00	0.70	202	263.00	0.20
11	32.00	0.60	75	109.00	3.60	139	178.00	0.30	203	264.00	0.30
12	38.00	0.30	76	110.00	1.90	140	179.00	0.40	204	265.00	0.30
13	39.00	1.60	77	111.00	7.01	141	180.00	0.40	205	266.00	0.20
14	40.00	0.50	78	112.00	2.10	142	181.00	0.80	206	267.00	0.30
15	41.00	12.01	79	113.00	1.80	143	182.00	0.40	207	269.00	1.50
16	42.00	3.30	80	114.00	0.50	144	183.00	0.40	208	270.00	0.40
17	43.00	26.02	81	115.00	3.30	145	185.00	5.10	209	275.00	0.30
18	44.00	15.01	82	116.00	1.70	146	186.00	1.40	210	277.00	0.20
19	45.00	1.00	83	117.00	0.60	147	187.00	0.30	211	278.00	0.20
20	46.00	0.20	84	118.00	0.20	148	191.00	0.60	212	279.00	0.30
21	50.00	0.40	85	119.00	0.80	149	192.00	0.30	213	280.00	0.30
22	51.00	0.50	86	120.00	0.60	150	193.00	0.30	214	281.00	0.20
23	52.00	0.40	87	121.00	2.00	151	194.00	0.40	215	283.00	5.20
24	53.00	1.20	88	122.00	0.60	152	195.00	0.70	216	284.00	1.40
25	54.00	2.10	89	123.00	2.10	153	196.00	0.50	217	285.00	0.30
26	55.00	30.03	90	124.00	1.10	154	197.00	0.40	218	292.00	0.20
27	56.00	7.21	91	125.00	3.90	155	199.00	5.10	219	293.00	0.30
28	57.00	29.03	92	126.00	1.00	156	200.00	0.50	220	294.00	0.20
29	58.00	2.00	93	127.00	1.20	157	205.00	0.50	221	295.00	0.20
30	59.00	4.60	94	128.00	0.50	158	206.00	0.20	222	297.00	3.10
31	60.00	0.90	95	129.00	8.31	159	207.00	0.30	223	298.00	1.10
32	61.00	0.40	96	130.00	2.90	160	208.00	0.30	224	299.00	0.30
33	64.00	0.80	97	131.00	0.60	161	209.00	0.60	225	306.00	0.30
34	65.00	0.50	98	132.00	0.20	162	210.00	0.40	226	307.00	0.20
35	66.00	0.40	99	133.00	0.50	163	211.00	0.50	227	308.00	0.40
36	67.00	5.71	100	134.00	0.30	164	212.00	0.20	228	309.00	0.30
37	68.00	3.10	101	135.00	1.90	165	213.00	2.10	229	311.00	1.40
38	69.00	23.02	102	136.00	0.50	166	214.00	0.70	230	312.00	0.50
39	70.00	5.81	103	137.00	1.20	167	215.00	0.20	231	314.00	0.20
40	71.00	18.02	104	138.00	0.80	168	218.00	0.20	232	321.00	0.20
41	72.00	1.20	105	139.00	2.30	169	219.00	0.30	233	322.00	0.20
42	73.00	2.60	106	140.00	0.70	170	220.00	0.20	234	323.00	0.20
43	74.00	100.00	107	141.00	1.00	171	221.00	0.30	235	325.00	1.70
44	75.00	34.03	108	142.00	0.40	172	222.00	0.30	236	326.00	0.80
45	76.00	2.00	109	143.00	22.02	173	223.00	0.50	237	327.00	0.20
46	77.00	1.00	110	144.00	2.50	174	224.00	0.40	238	333.00	0.30
47	78.00	1.20	111	145.00	0.50	175	225.00	0.40	239	339.00	11.01
48	79.00	2.10	112	146.00	0.30	176	226.00	0.20	240	340.00	2.80
49	80.00	1.10	113	147.00	0.40	177	227.00	3.40	241	341.00	0.50
50	81.00	6.31	114	148.00	0.40	178	228.00	0.90	242	348.00	0.20
51	82.00	4.10	115	151.00	0.80	179	229.00	0.30	243	349.00	0.30
52	83.00	18.02	116	152.00	0.60	180	231.00	0.20	244	350.00	0.30
53	84.00	5.91	117	153.00	1.60	181	232.00	0.20	245	351.00	3.30
54	85.00	9.41	118	154.00	0.60	182	233.00	0.30	246	352.00	0.90
55	86.00	1.00	119	155.00	0.70	183	235.00	0.20	247	353.00	2.10
56	87.00	80.08	120	156.00	0.20	184	236.00	0.20	248	354.00	1.00
57	88.00	6.61	121	157.00	3.10	185	237.00	0.50	249	355.00	0.30
58	89.00	0.70	122	158.00	0.70	186	238.00	0.30	250	381.00	0.20
59	90.00	0.20	123	159.00	0.30	187	239.00	0.50	251	382.00	38.03
60	92.00	0.60	124	162.00	0.20	188	240.00	0.20	252	383.00	11.01
61	93.00	1.60	125	163.00	0.90	189	241.00	3.40	253	384.00	1.70
62	94.00	1.10	126	164.00	0.30	190	242.00	1.00	254	385.00	0.30
63	95.00	5.91	127	165.00	0.50	191	243.00	0.20			
64	96.00	3.60	128	166.00	0.50	192	247.00	0.20			

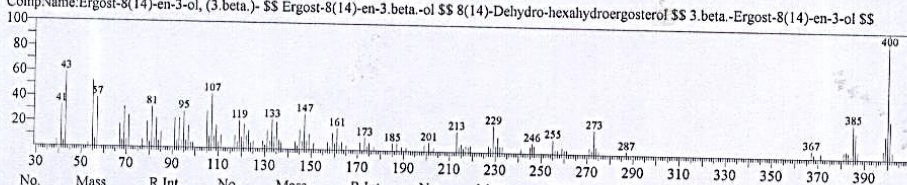


Compound Information

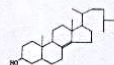
Entry:182703 Library:NIST11.LIB

Formula:C28H48O CAS:30365-65-2 MolWeight:400 RetIndex:2660

CompName:Ergost-8(14)-en-3-ol, (3.beta.)- SS Ergost-8(14)-en-3.beta.-ol SS 8(14)-Dehydro-hexahydroergosterof SS 3.beta.-Ergost-8(14)-en-3-ol SS



No.	Mass	R.Int	No.	Mass	R.Int	No.	Mass	R.Int	No.	Mass	R.Int
1	39.00	5.00	33	107.00	43.00	65	158.00	3.00	97	233.00	5.00
2	41.00	33.00	34	108.00	9.00	66	159.00	13.00	98	241.00	3.00
3	42.00	4.00	35	109.00	18.00	67	160.00	5.00	99	245.00	5.00
4	43.00	59.00	36	110.00	5.00	68	161.00	17.00	100	246.00	8.00
5	53.00	3.00	37	111.00	10.00	69	162.00	4.00	101	247.00	6.00
6	55.00	52.00	38	117.00	10.00	70	163.00	6.00	102	255.00	11.00
7	56.00	6.00	39	118.00	5.00	71	165.00	4.00	103	256.00	3.00
8	57.00	39.00	40	119.00	22.00	72	171.00	6.00	104	257.00	3.00
9	67.00	18.00	41	120.00	9.00	73	173.00	10.00	105	259.00	5.00
10	68.00	5.00	42	121.00	19.00	74	174.00	3.00	106	260.00	3.00
11	69.00	32.00	43	122.00	10.00	75	175.00	6.00	107	261.00	3.00
12	70.00	6.00	44	123.00	14.00	76	177.00	3.00	108	271.00	5.00
13	71.00	25.00	45	124.00	5.00	77	185.00	6.00	109	272.00	3.00
14	77.00	6.00	46	125.00	6.00	78	187.00	6.00	110	273.00	19.00
15	79.00	20.00	47	129.00	6.00	79	189.00	3.00	111	274.00	6.00
16	80.00	4.00	48	130.00	3.00	80	191.00	3.00	112	275.00	3.00
17	81.00	32.00	49	131.00	14.00	81	199.00	5.00	113	287.00	3.00
18	82.00	7.00	50	132.00	6.00	82	201.00	7.00	114	367.00	6.00
19	83.00	23.00	51	133.00	23.00	83	203.00	3.00	115	368.00	3.00
20	84.00	5.00	52	134.00	10.00	84	213.00	16.00	116	371.00	4.00
21	85.00	12.00	53	135.00	21.00	85	214.00	4.00	117	381.00	5.00
22	91.00	23.00	54	136.00	7.00	86	215.00	6.00	118	382.00	6.00
23	92.00	6.00	55	137.00	6.00	87	216.00	3.00	119	383.00	5.00
24	93.00	23.00	56	143.00	6.00	88	217.00	5.00	120	384.00	3.00
25	94.00	6.00	57	144.00	3.00	89	218.00	4.00	121	385.00	27.00
26	95.00	29.00	58	145.00	15.00	90	219.00	5.00	122	386.00	20.00
27	96.00	6.00	59	146.00	6.00	91	227.00	5.00	123	387.00	6.00
28	97.00	17.00	60	147.00	28.00	92	228.00	4.00	124	398.00	7.00
29	98.00	4.00	61	148.00	7.00	93	229.00	21.00	125	399.00	18.00
30	99.00	4.00	62	149.00	12.00	94	230.00	5.00	126	400.00	100.00
31	105.00	29.00	63	151.00	5.00	95	231.00	12.00	127	401.00	30.00
32	106.00	9.00	64	157.00	6.00	96	232.00	5.00	128	402.00	6.00

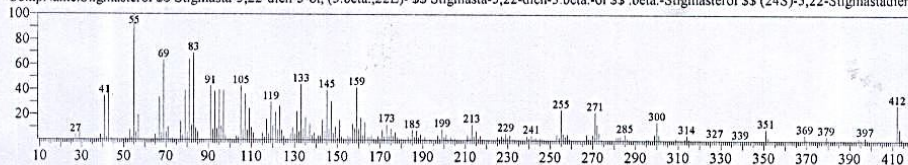


Compound Information

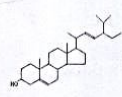
Entry:186823 Library:NIST11.LIB

Formula:C29H48O CAS:83-48-7 MolWeight:412 RetIndex:2739

CompName:Stigmasterol SS Stigmasta-5,22-dien-3-ol, (3.beta.,22E)- SS Stigmasta-5,22-dien-3 beta.-ol SS .beta.-Stigmasterol SS (24S)-5,22-Stigmastadien-



No.	Mass	R.Int	No.	Mass	R.Int	No.	Mass	R.Int	No.	Mass	R.Int
1	15.00	0.40	72	110.00	9.91	143	181.00	0.70	214	260.00	0.40
2	25.00	0.10	73	111.00	5.50	144	182.00	0.50	215	266.00	0.10
3	26.00	0.40	74	112.00	1.00	145	183.00	2.70	216	267.00	4.50
4	27.00	3.80	75	113.00	0.30	146	184.00	1.10	217	268.00	1.20
5	28.00	0.90	76	114.00	0.50	147	185.00	7.81	218	269.00	1.10
6	29.00	7.41	77	115.00	5.10	148	186.00	2.70	219	270.00	4.50
7	30.00	0.20	78	116.00	2.50	149	187.00	7.41	220	271.00	22.22
8	31.00	0.60	79	117.00	16.21	150	188.00	2.30	221	272.00	12.51
9	37.00	0.20	80	118.00	5.30	151	189.00	4.40	222	273.00	5.91
10	38.00	0.30	81	119.00	30.03	152	190.00	1.10	223	274.00	1.00
11	39.00	3.90	82	120.00	11.31	153	191.00	2.40	224	275.00	0.10
12	40.00	1.00	83	121.00	21.72	154	192.00	0.50	225	281.00	2.60
13	41.00	35.03	84	122.00	7.91	155	193.00	0.40	226	282.00	3.10
14	42.00	2.50	85	123.00	26.42	156	194.00	0.10	227	283.00	3.40
15	43.00	43.14	86	124.00	7.41	157	195.00	0.30	228	284.00	1.00
16	44.00	1.90	87	125.00	2.60	158	196.00	0.30	229	285.00	4.80
17	45.00	0.70	88	126.00	0.80	159	197.00	3.60	230	286.00	1.50
18	50.00	0.30	89	127.00	1.30	160	198.00	1.30	231	287.00	0.30
19	51.00	0.80	90	128.00	5.20	161	199.00	8.71	232	288.00	0.10
20	52.00	0.40	91	129.00	9.71	162	200.00	2.40	233	289.00	0.10
21	53.00	7.91	92	130.00	5.10	163	201.00	4.20	234	293.00	0.10
22	54.00	2.00	93	131.00	22.32	164	202.00	1.10	235	294.00	0.10
23	55.00	100.00	94	132.00	6.71	165	203.00	2.50	236	295.00	0.80
24	56.00	5.71	95	133.00	44.44	166	204.00	0.60	237	296.00	0.80
25	57.00	19.12	96	134.00	8.61	167	205.00	1.50	238	297.00	0.30
26	58.00	1.10	97	135.00	17.82	168	206.00	0.30	239	298.00	0.20
27	59.00	0.70	98	136.00	2.80	169	209.00	0.30	240	299.00	4.60
28	61.00	0.10	99	137.00	12.71	170	210.00	0.20	241	300.00	14.71
29	62.00	0.10	100	138.00	3.60	171	211.00	4.10	242	301.00	4.40
30	63.00	0.40	101	139.00	5.50	172	212.00	1.90	243	302.00	0.90
31	64.00	0.10	102	140.00	0.90	173	213.00	12.51	244	303.00	0.10
32	65.00	4.20	103	141.00	3.40	174	214.00	3.00	245	309.00	1.50
33	66.00	1.70	104	142.00	3.10	175	215.00	7.01	246	310.00	0.50
34	67.00	34.23	105	143.00	15.81	176	216.00	1.70	247	311.00	0.30
35	68.00	5.20	106	144.00	7.01	177	217.00	3.50	248	312.00	0.30
36	69.00	63.67	107	145.00	39.74	178	218.00	0.90	249	313.00	1.20
37	70.00	5.81	108	146.00	8.91	179	219.00	0.70	250	314.00	4.30
38	71.00	9.81	109	147.00	30.63	180	220.00	0.20	251	315.00	1.10
39	72.00	0.70	110	148.00	5.40	181	223.00	0.20	252	316.00	0.20
40	73.00	0.90	111	149.00	10.21	182	224.00	0.10	253	323.00	0.10
41	75.00	0.30	112	150.00	1.80	183	225.00	2.50	254	326.00	0.10
42	77.00	14.51	113	151.00	15.61	184	226.00	0.90	255	327.00	1.50
43	78.00	3.40	114	152.00	2.50	185	227.00	3.30	256	328.00	0.60
44	79.00	39.24	115	153.00	1.00	186	228.00	2.10	257	329.00	0.20
45	80.00	5.81	116	154.00	0.80	187	229.00	5.40	258	335.00	0.10
46	81.00	63.87	117	155.00	3.20	188	230.00	2.30	259	336.00	0.10
47	82.00	11.31	118	156.00	2.50	189	231.00	4.20	260	339.00	0.20
48	83.00	69.27	119	157.00	12.51	190	232.00	1.20	261	340.00	0.20
49	84.00	9.21	120	158.00	9.01	191	233.00	0.70	262	342.00	0.10
50	85.00	6.51	121	159.00	41.84	192	234.00	0.30	263	349.00	0.10
51	86.00	0.50	122	160.00	8.71	193	235.00	0.10	264	350.00	0.10
52	87.00	0.20	123	161.00	17.52	194	237.00	0.20	265	351.00	9.11
53	89.00	0.30	124	162.00	4.00	195	238.00	0.20	266	352.00	2.90
54	91.00	42.74	125	163.00	13.61	196	239.00	3.40	267	353.00	0.60
55	92.00	8.21	126	164.00	2.70	197	240.00	1.70	268	354.00	0.20
56	93.00	38.43	127	165.00	2.40	198	241.00	3.90	269	365.00	0.50
57	94.00	9.11	128	166.00	3.70	199	242.00	1.20	270	366.00	0.20
58	95.00	39.84	129	167.00	1.10	200	243.00	2.40	271	367.00	0.10
59	96.00	11.11	130	168.00	0.70	201	244.00	0.70	272	368.00	0.20
60	97.00	39.44	131	169.00	3.00	202	245.00	1.40	273	369.00	4.70
61	98.00	3.90	132	170.00	1.40	203	246.00	1.00	274	370.00	1.60
62	99.00	0.70	133	171.00	7.91	204	247.00	0.40	275	371.00	0.20
63	100.00	0.40	134	172.00	2.70	205	248.00	0.10	276	379.00	3.60
64	102.00	0.30	135	173.00	12.51	206	251.00	0.20	277	380.00	1.20
65	103.00	2.90	136	174.00	3.50	207	253.00	4.90	278	381.00	0.30
66	104.00	2.40	137	175.00	8.81	208	254.00	2.50	279	383.00	0.40
67	105.00	42.74	138	176.00	3.50	209	255.00	24.02	280	384.00	0.10
68	106.00	8.11	139	177.00	6.01	210	256.00	5.00	281	392.00	0.10
69	107.00	36.63	140	178.00	2.20	211	257.00	3.00	282	393.00	0.10
70	108.00	7.61	141	179.00	0.80	212	258.00	4.90	283	394.00	2.40
71	109.00	24.92	142	180.00	1.00	213	259.00	1.30	284	395.00	0.90





**UMST**  
UNIVERSITY

جامعة العلوم الطبية والتكنولوجيا  
UMST University of Medical  
Sciences & Technology  
P. O. Box 12810,  
Khartoum, Sudan

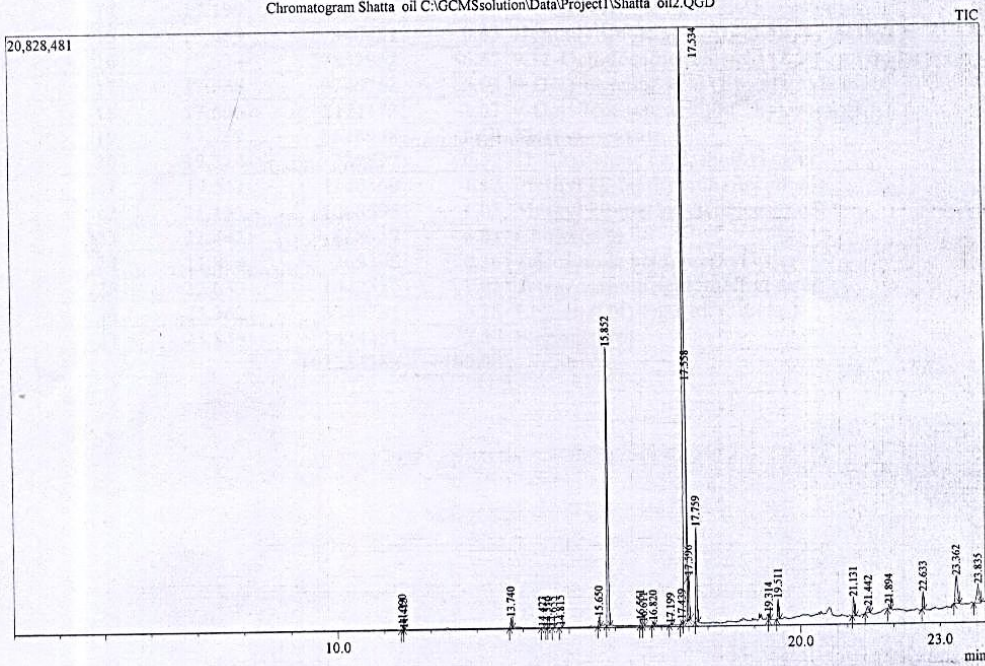
T. +249 183 228614  
F. +249 183 224799  
E. administration.office@umst-edu.sd  
W. www.umst-edu.sd

خديجة

**Sample Information**

Analyzed by : Babekir Siddig  
Sample Type : Fixed oil  
Sample Name : Shatta seeds  
Date : 9/12/2015  
customer name : Khadiga Ahmed  
GC,MS Analysis  
MSC Student .Sudan University  
Tel : 0968800412

Chromatogram Shatta oil C:\GCMSsolution\Data\Project1\Shatta oil2.QGD



Head department : .....

General manager ; .....



## Peak Report TIC

Peak#	R.Time	Area	Area%	Name
1	11.390	225139	0.22	Butylated Hydroxytoluene
2	11.415	26265	0.03	Dodecanoic acid, methyl ester
3	13.740	548655	0.54	Methyl tetradecanoate
4	14.423	22723	0.02	Hexadecanoic acid,15- methyl-, methyl est
5	14.516	17921	0.02	Tridecanoic acid, 12-methyl-, methyl ester
6	14.550	8467	0.01	5-Octadecenoic acid, methyl ester
7	14.655	15260	0.01	4-Octadecenoic acid, methyl ester
8	14.815	70728	0.07	Pentadecanoic acid, methyl ester
9	15.650	475543	0.47	9-Hexadecenoic acid, methyl ester, (Z)-
10	15.852	17995440	17.60	Hexadecanoic acid, methyl ester
11	16.551	258541	0.25	Hexadecanoic acid, 14-methyl-, methyl est
12	16.611	159310	0.16	Methyl 5,13-docosadienoate
13	16.820	239813	0.23	Heptadecanoic acid, methyl ester
14	17.199	60264	0.06	7-Octadecenoic acid, methyl ester
15	17.439	340421	0.33	Heptadecanoic acid, 16-methyl-, methyl es
16	17.534	57832952	56.57	9,12-Octadecadienoic acid (Z,Z)-, methyl e
17	17.558	5745752	5.62	9-Octadecenoic acid (Z)-, methyle ester
18	17.596	2121173	2.07	9-Octadecenoic acid, methyl ester, (E)-
19	17.759	5620948	5.50	Methyl stearate
20	19.314	329897	0.32	11-Eicosenoic acid, methyl ester
21	19.511	1140360	1.12	Methyl 18-methylnonadecanoate
22	21.131	1068595	1.05	Methyl 20-methyl-heneicosanoate
23	21.442	828329	0.81	Cholesterol
24	21.894	265395	0.26	Tricosanoic acid, methyl ester
25	22.633	1042327	1.02	Tetracosanoic acid, methyl ester
26	23.362	3348781	3.28	Ergost-8(14)-en-3-ol, (3.beta.)-
27	23.835	2424281	2.37	Stigmasterol
		102233280	100.00	

## Method

[Comment]

===== Analytical Line 1 =====

[AOC-20i]

# of Rinses with Presolvent	:2
# of Rinses with Solvent(post)	:2
# of Rinses with Sample	:2
Plunger Speed(Suction)	:High
Viscosity Comp. Time	:0.2 sec
Plunger Speed(Injection)	:High
Syringe Insertion Speed	:High
Injection Mode	:Normal
Pumping Times	:5
Inj. Port Dwell Time	:0.3 sec
Terminal Air Gap	:No
Plunger Washing Speed	:High
Washing Volume	:8uL
Syringe Suction Position	:0.0 mm
Syringe Injection Position	:0.0 mm
Use 3 Solvent Vial	:1 vial

[GC-2010]

Column Oven Temp.	:60.0 °C	
Injection Temp.	:280.00 °C	
Injection Mode	:Split	
Flow Control Mode	:Linear Velocity	
Pressure	:93.1 kPa	
Total Flow	:50.0 mL/min	
Column Flow	:1.50 mL/min	
Linear Velocity	:44.7 cm/sec	
Purge Flow	:3.0 mL/min	
Split Ratio	:-1.0	
High Pressure Injection	:OFF	
Carrier Gas Saver	:OFF	
Splitter Hold	:OFF	
Oven Temp. Program		
Rate	Temperature(°C)	Hold Time(min)
-	60.0	0.00
10.00	300.0	0.00

&lt; Ready Check Heat Unit &gt;

Column Oven	: Yes
SPL1	: Yes
MS	: Yes

&lt; Ready Check Detector(FTD) &gt;

&lt; Ready Check Baseline Drift &gt;

&lt; Ready Check Injection Flow &gt;

SPL1 Carrier	: Yes
SPL1 Purge	: Yes

&lt; Ready Check APC Flow &gt;

&lt; Ready Check Detector APC Flow &gt;

External Wait	:No
Equilibrium Time	:3.0 min

[GC Program]

[GCMS-QP2010 Ultra]

IonSourceTemp	:200.00 °C
Interface Temp.	:250.00 °C
Solvent Cut Time	:2.50 min
Detector Gain Mode	:Relative
Detector Gain	:0.85 kV +0.00 kV
Threshold	:0

#### Sample preparation (Methylation) :-

- Take 2ml from the sample in to test tube
- Add 7 ml from alcoholic NaOH that prepared by dissolve 2g sodium hydroxide in 100ml methanol
- Ad 7 ml of alcoholic H<sub>2</sub>SO<sub>4</sub> 1% prepared by mix 1ml Conc. H<sub>2</sub>SO<sub>4</sub>+99 ml methanol
- Shake by vortex for 3 minutes
- Leave the contents to over night
- Add 2ml from supersaturated NaCl
- Add 2ml normal hexane and shake for three minutes and collect the hexane layer
- Take 5μL from hexane collected and dilute it with 5ml diethyl ether
- Add 1gram from sodium sulphate as drying agent
- Filter through syringe filter 0.45 μm
- Transfer the filtrate directly to the GC-MS vial
- Inject 1μL directly to the GC-MS

#### Instrument Information's:-

- Name : GC.MS
- Detector : Mass spectrometer
- Model : GC.MS-QP2010 Ultra
- Company : Shimadzu
- Country : Japan
- Column : Rtx-5MS...Length (30 m)...Diameter (0.25 mm)...Thickness (0.25 μl).
- Carrier gas : Helium

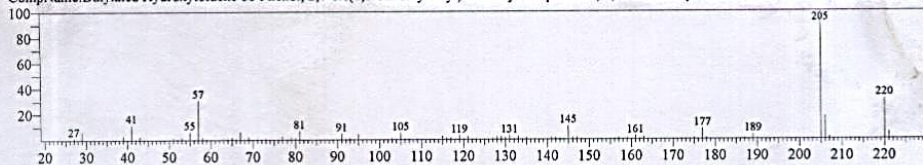
05-10

Compound Information

Entry:20024 Library:NIST11S.LIB

Formula:C15H24O CAS:128-37-0 MolWeight:220 RetIndex:1668

CompName:Butylated Hydroxytoluene SS Phenol, 2,6-bis(1,1-dimethylethyl)-4-methyl- SS p-Cresol, 2,6-di-tert-butyl- SS Advstab 401 SS Antioxidant DBP



No.	Mass	R.Int	No.	Mass	R.Int	No.	Mass	R.Int	No.	Mass	R.Int
1	27.00	1.69	28	72.00	0.42	55	118.00	0.40	82	156.00	0.65
2	29.00	6.59	29	73.00	1.08	56	119.00	3.32	83	157.00	1.33
3	39.00	3.07	30	74.00	0.42	57	120.00	0.51	84	158.00	0.54
4	40.00	0.36	31	75.00	0.20	58	121.00	2.70	85	159.00	1.47
5	41.00	11.81	32	76.00	0.28	59	122.00	0.43	86	160.00	0.43
6	42.00	0.53	33	77.00	2.80	60	123.00	0.41	87	161.00	2.85
7	43.00	2.60	34	78.00	0.82	61	127.00	0.76	88	162.00	0.63
8	44.00	0.21	35	79.00	2.02	62	128.00	2.19	89	163.00	1.82
9	50.00	0.30	36	80.00	1.36	63	129.00	2.30	90	164.00	0.33
10	51.00	1.43	37	81.00	7.12	64	130.00	1.51	91	171.00	0.36
11	52.00	0.92	38	87.00	0.39	65	131.00	3.26	92	172.00	0.63
12	53.00	2.06	39	89.00	0.41	66	132.00	0.64	93	173.00	0.40
13	54.00	0.30	40	91.00	4.83	67	133.00	2.36	94	175.00	0.95
14	55.00	6.43	41	92.00	0.65	68	134.00	0.48	95	177.00	8.22
15	56.00	0.52	42	93.00	1.02	69	135.00	1.42	96	178.00	1.15
16	57.00	31.00	43	94.00	0.41	70	136.00	0.30	97	187.00	1.06
17	58.00	1.92	44	95.00	4.49	71	137.00	0.47	98	189.00	3.82
18	59.00	0.89	45	102.00	0.29	72	141.00	1.71	99	190.00	0.70
19	63.00	0.73	46	103.00	0.99	73	142.00	1.45	100	203.00	0.44
20	64.00	0.89	47	104.00	0.35	74	143.00	1.09	101	205.00	100.00
21	65.00	2.06	48	105.00	5.47	75	144.00	0.58	102	206.00	17.73
22	66.00	0.76	49	106.00	0.74	76	145.00	10.61	103	207.00	1.58
23	67.00	6.23	50	107.00	0.75	77	146.00	1.64	104	219.00	0.52
24	68.00	0.26	51	109.00	0.43	78	147.00	1.32	105	220.00	31.62
25	69.00	2.60	52	115.00	2.85	79	148.00	0.45	106	221.00	5.50
26	70.00	0.39	53	116.00	1.31	80	153.00	0.31	107	222.00	0.60
27	71.00	0.75	54	117.00	1.57	81	155.00	0.65			

