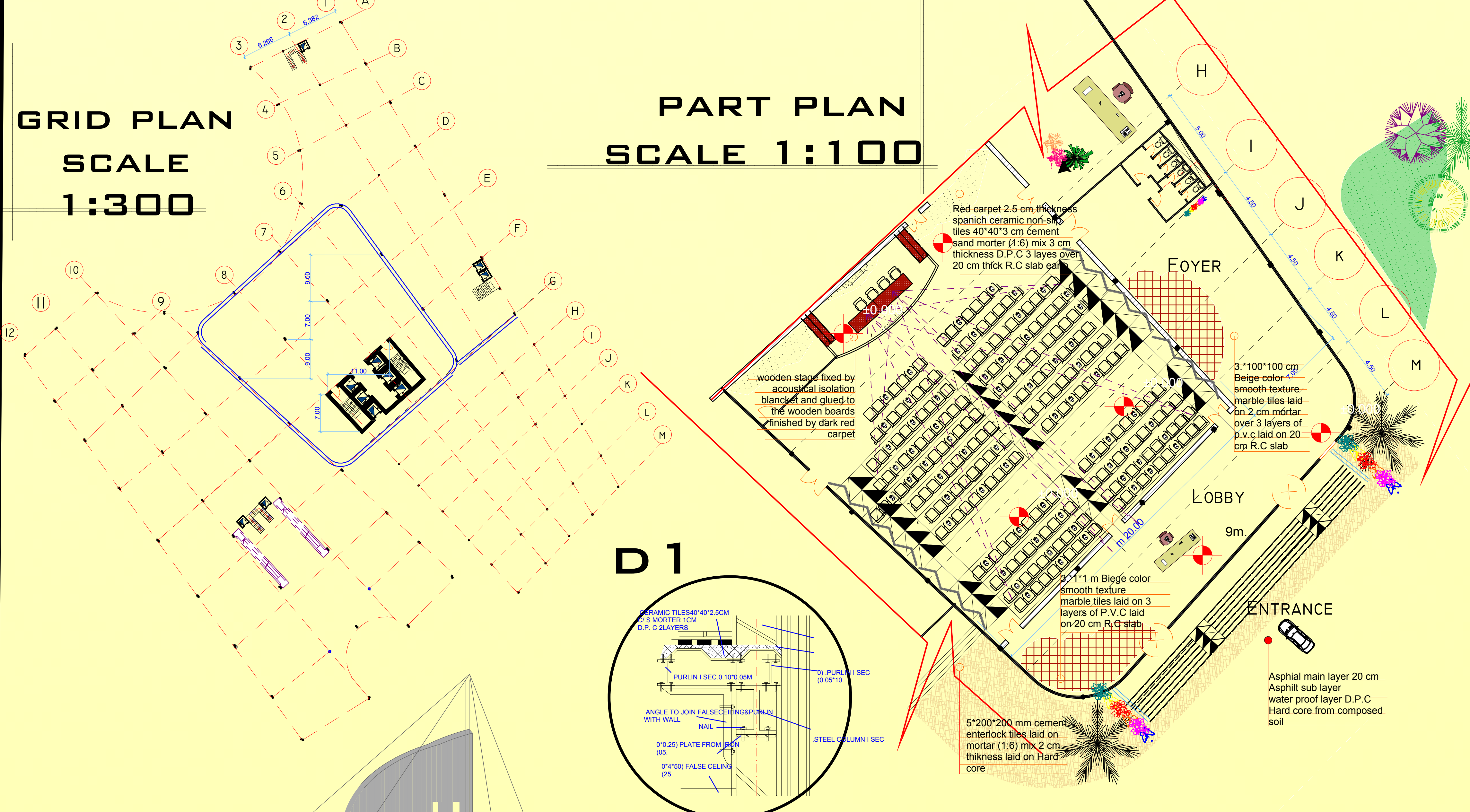



**GRID PLAN**  
**SCALE**  
**1:300**

**PART PLAN**  
**SCALE 1:100**

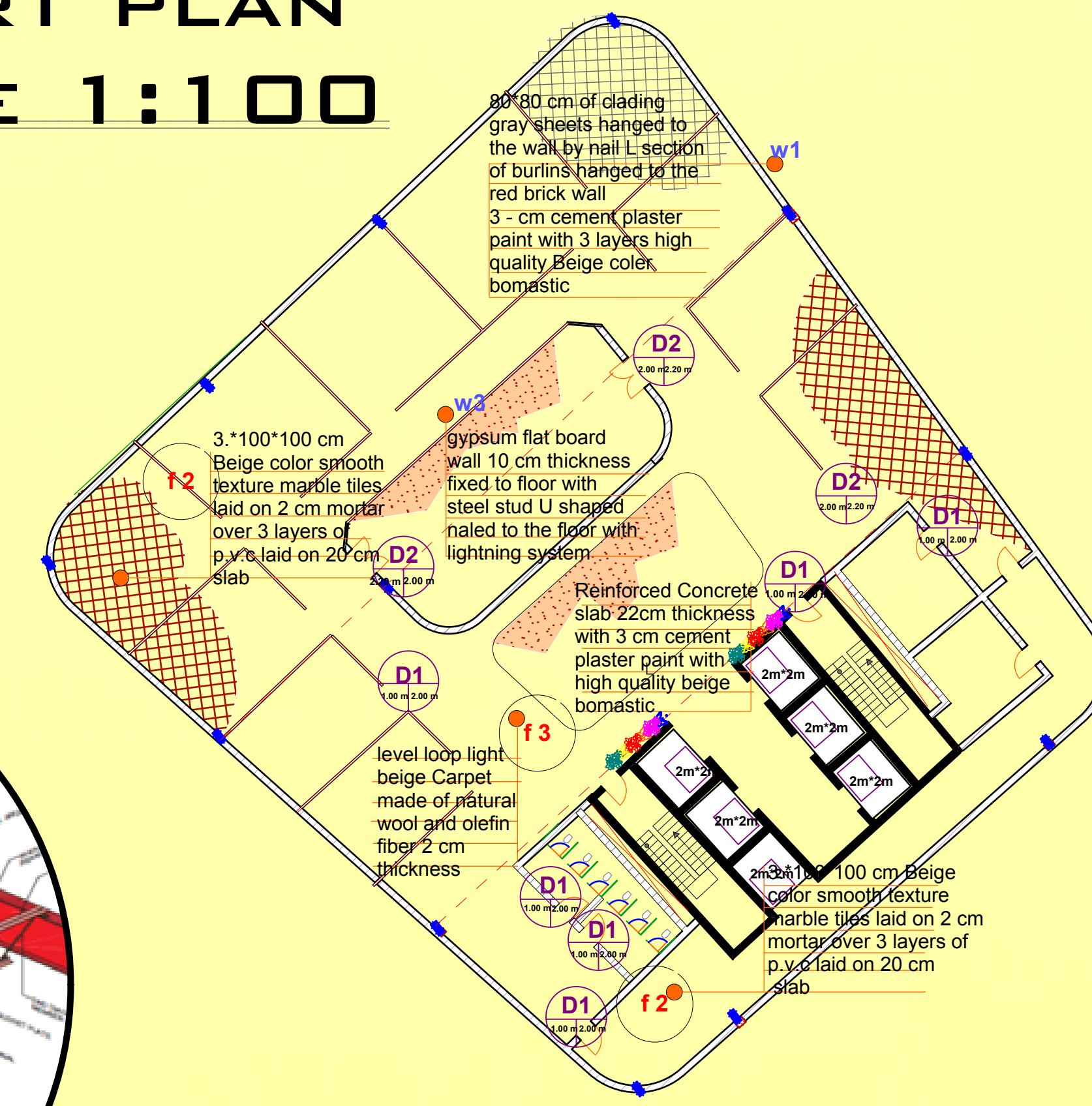



NO.	DESCRIPTION
01	80*80 cm of cladding gray sheets hanged to the wall by nail L section of burins hanged to the red brick wall 3-cm cement plaster paint with high quality beige color bomatic.
02	Reinforced Concrete slab 22cm thickness with 3-cm cement plaster paint with high quality beige bomatic.
03	Gypsum flat board wall 10 cm thickness fixed to floor with steel stud L shaped nailed to the floor with lightning system.
04	Red brick wall 20 cm thickness finished with 3-cm cement plaster (1:6) mix painted with high quality Beige color bomatic.
NO.	DESCRIPTION
11	500*200 mm cement asbestos tiles laid on mortar (1:6) mix 2 cm thickness laid on Hard core.
12	3*100*100 cm Beige color smooth texture marble tiles laid on 2 cm mortar over 3 layers of p.v.c laid on 20 cm R.C. slab.
13	level loop light beige Carpet made of natural wool and olefin fiber 2 cm thickness.
14	wooden stage fixed by acoustical isolation blanket and glued to the wooden boards finished by dark red carpet.
15	500*200 mm cement asbestos tiles laid on mortar (1:6) mix 2 cm thickness laid on Hard core.
16	3*111 cm Beige color smooth texture marble tiles laid on 3 layers of P.V.C laid on 20 cm R.C. slab.
NO.	DESCRIPTION
Door	Width Length
D1	1.80 m 2.00 m
D2	2.00 m 2.20 m
D3	2.40 m 2.20 m
NO.	DESCRIPTION
Window	Width Length
W1	2.00 m 2.20 m
W2	2.10 m 2.20 m

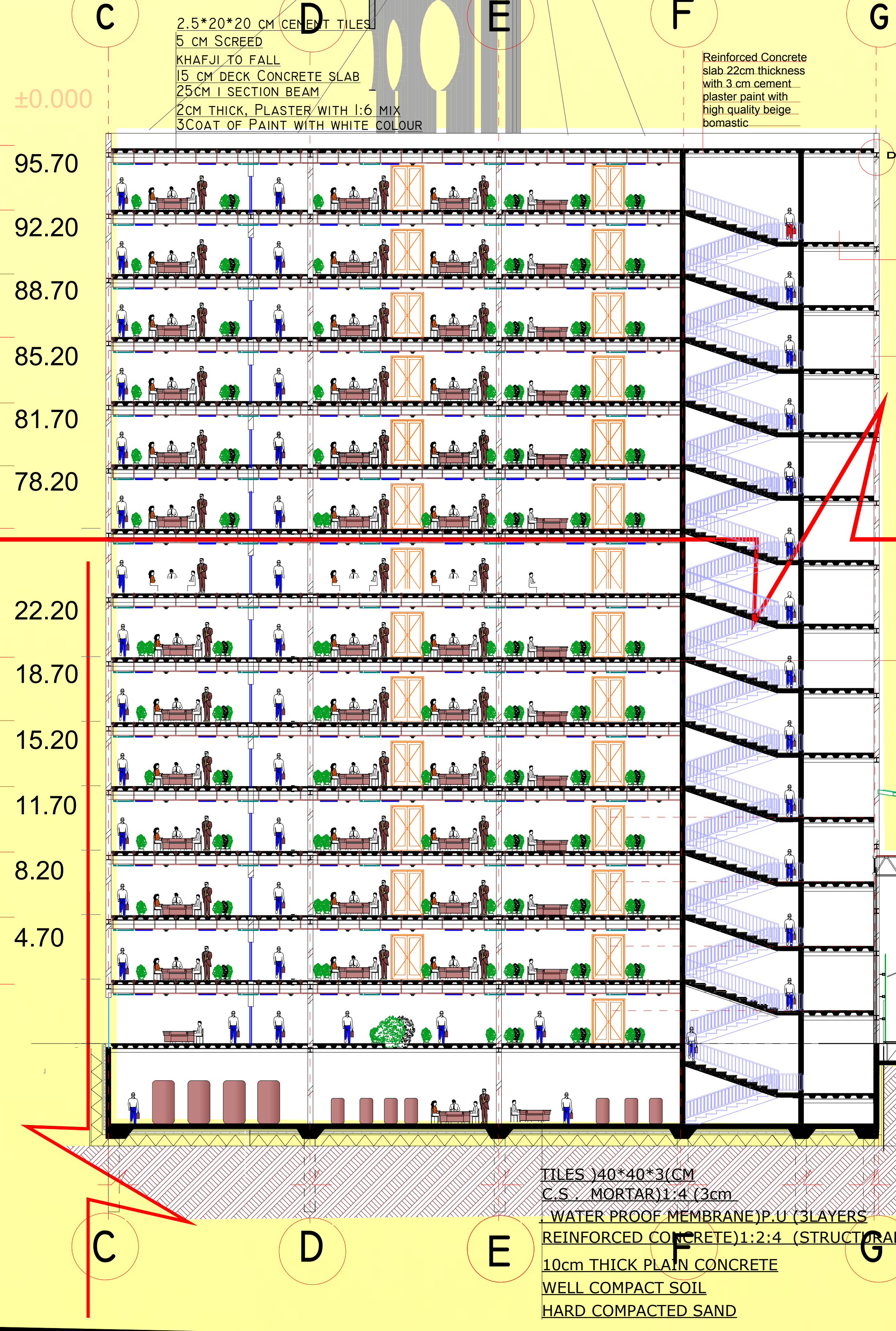
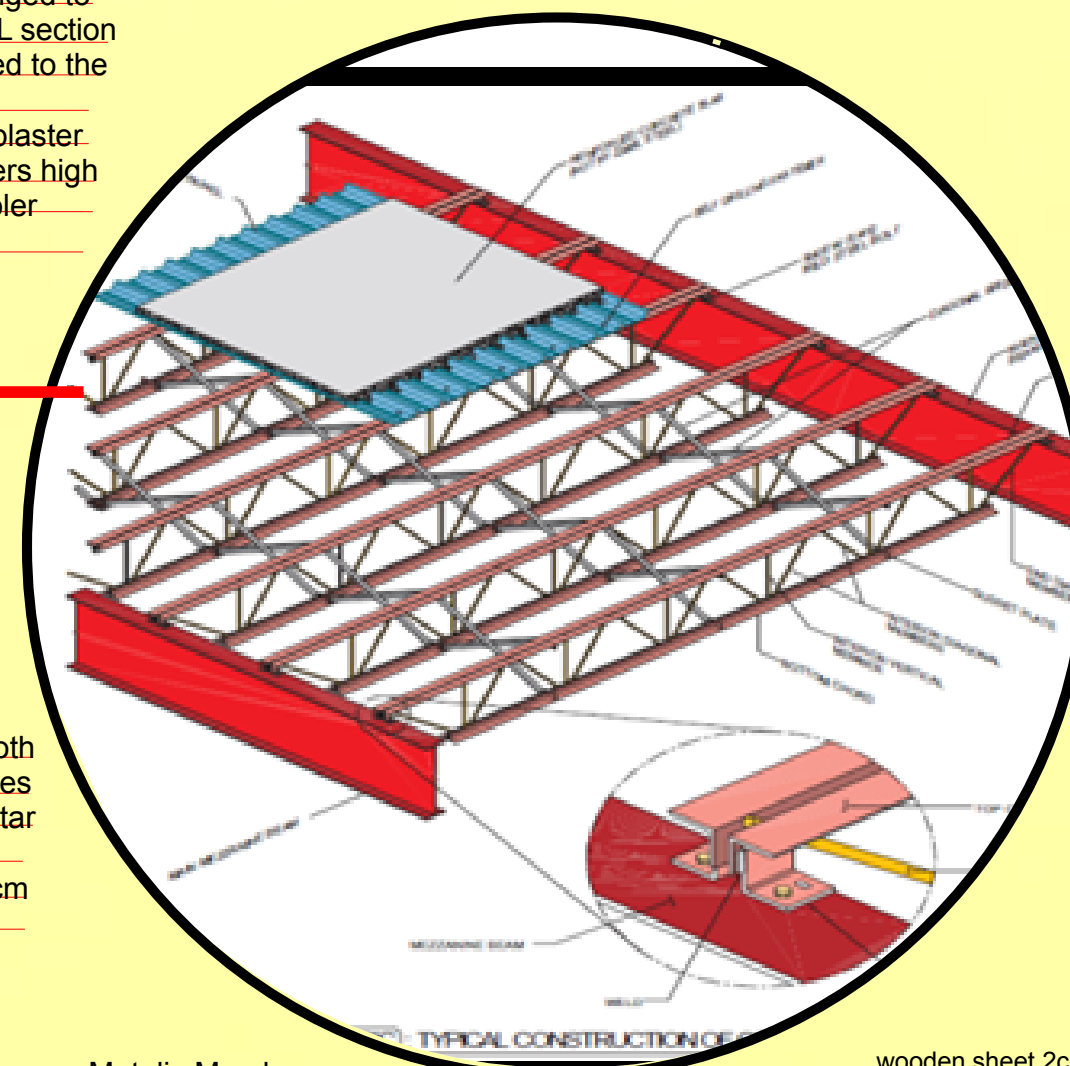
MANSAOURA UNIVERSITY FOR SCIENCE & TECHNOLOGY  
FACULTY OF ARCHITECTURE - FINAL YEAR  
GRADUATION PROJECT  
BY: SARA HAMID HEAMID ABDELRAHMAN  
SUPERVISOR: PROF. SAUD SADEG HASSAN

Scale plan: SCALE 1:300  
DRAWING TITLE: PART PLANS & PART SECTIONS

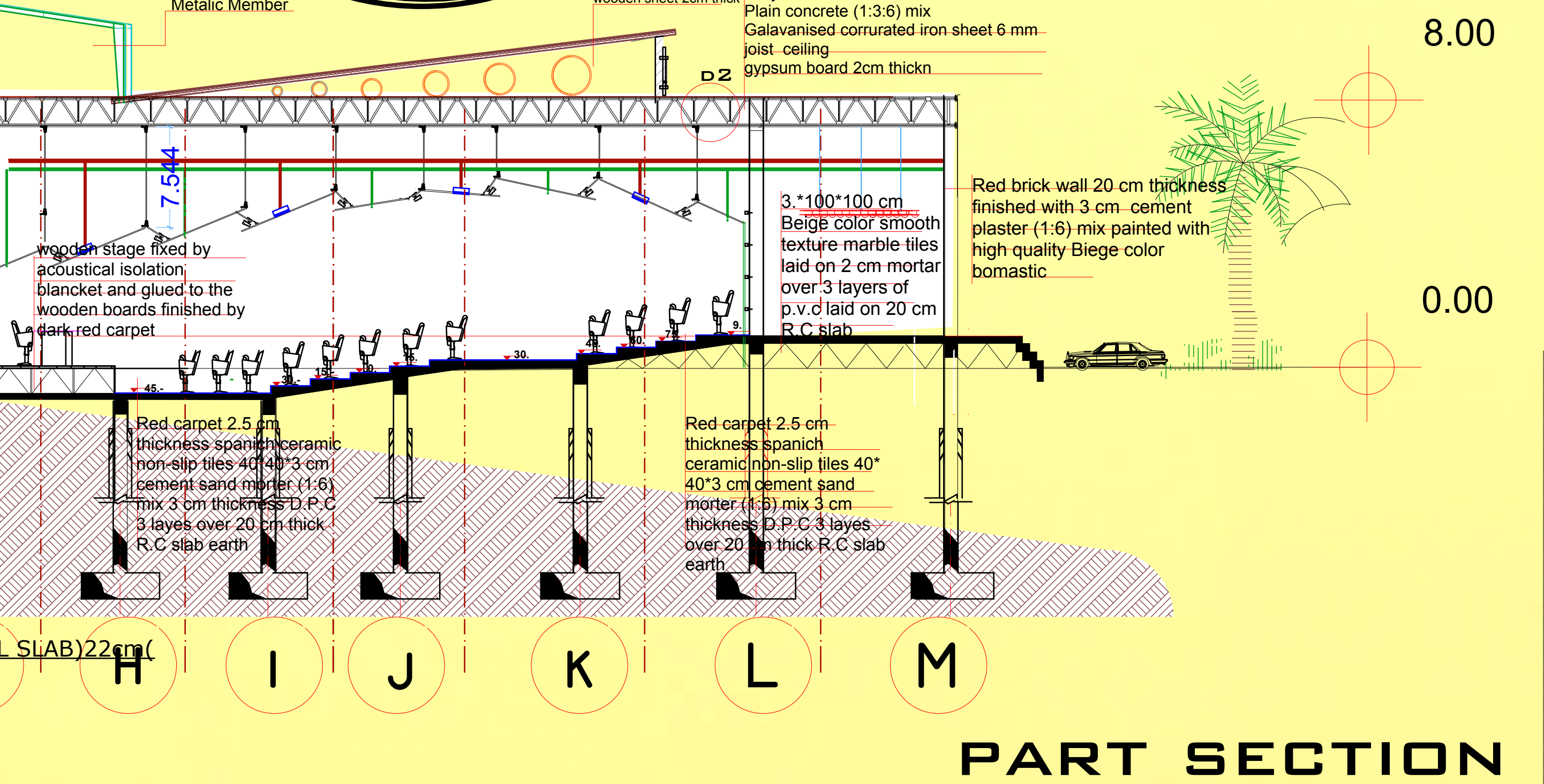
**PART PLAN**  
**SCALE 1:100**



**D2**



**D1**



**PART SECTION**  
**SCALE 1:100**

**BY: SARA HAMID HEAMID ABDELRAHMAN**  
**SUPERVISOR: PROF. SAUD SADEG HASSAN**