

Appendix (1)

DATA COLLECTION SHEET

NT work Sheet

Maternal lady				Fetus			
						PREVIOS BABY	FETUS
Name		Diabetic			Delivery		
I.D		Hypertensive			Miscarriage		
Maternal age		Obese			Intrauterine Death		
Weight		Renal Diseases			Termination		
		Cardiac diseases			Heart Defect		
					Structural abnormalities		
					Genetic Syndromes		
					NT thickness		

	Numerical Data of NT			
	Normal	Affected	Altered	
10weeks -10weeks 6days				
11weeks -11weeks 6 days				
12weeks -12weeks 6 days				
13weeks -13weeks 6days				

APENDEX (2)



Figure 5.1 –Nuchal Translucency measurement increased



Figure 5.2:—Nuchal Translucency measurement increased

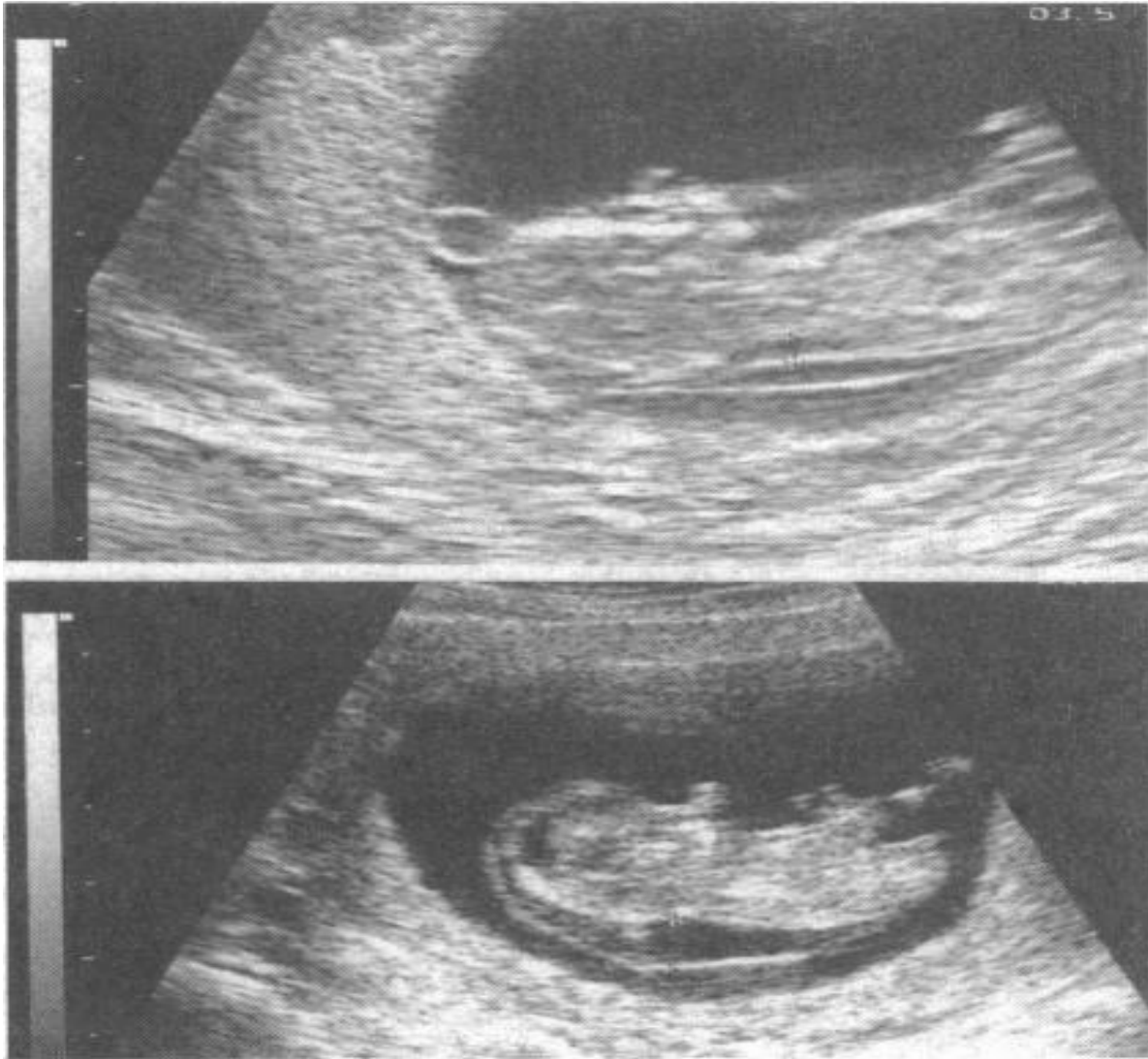


Figure 5.3:- Nuchal Translucency measurement increased leading to fetal hydropes



Figure 5.4:- Ultrasound picture of a 12-week fetus with trisomy 21, demonstrating increased nuchal translucency thickness



Figure 5.5:-A thickened nuchal translucency is large more than 3 mm



Figure 5.6:-A nuchal translucency measurement of up to 2.0mm is normal at 11 weeks and up to about 2.8mm by 13 weeks and 6 days. If the nuchal translucency is increased, it does not mean there is always a problem



Figure 5. 7:- A nuchal translucency measurement is 4.26mm