

Results

In table (3-1) Total protein levels of pregnant women significant decreased when compared with control group P.value (0.02).

In figure (3-1) significant difference of total protein levels in first trimester compared to second and third trimesters P.value (0.00) / insignificant difference was observed between second and third P.value (0.07).

In table (3-1) Albumin levels of pregnant women significant decreased when compared with control group P.value (0.00).

In figure (3-2) significant difference of albumin levels between first with third and insignificant difference between first and second P.value (0.27).

In table (3-1) Blood urea levels of pregnant women significant decreased when compared with control group P.value (0.01).

In figure (3-3) significant difference blood urea levels between first with second and third and insignificant difference between second with third (0.56).

Table(3-1): Comparison of total protein, albumin and urea levels between pregnant women's with control groups (mean \pm S.D).

parameters	Control (n=10)	Pregnant (n=60)	p. value
Total protein (g/dl)	(7.03 \pm 0.50)	(6.36 \pm 0.29)	(0.02)
Albumin (g/dl)	(4.37 \pm 0.39)	(3.39 \pm 0.36)	(0.00)
Urea (mg/dl)	(22.37 \pm 0.10)	(15.36 \pm 3.76)	(0.01)

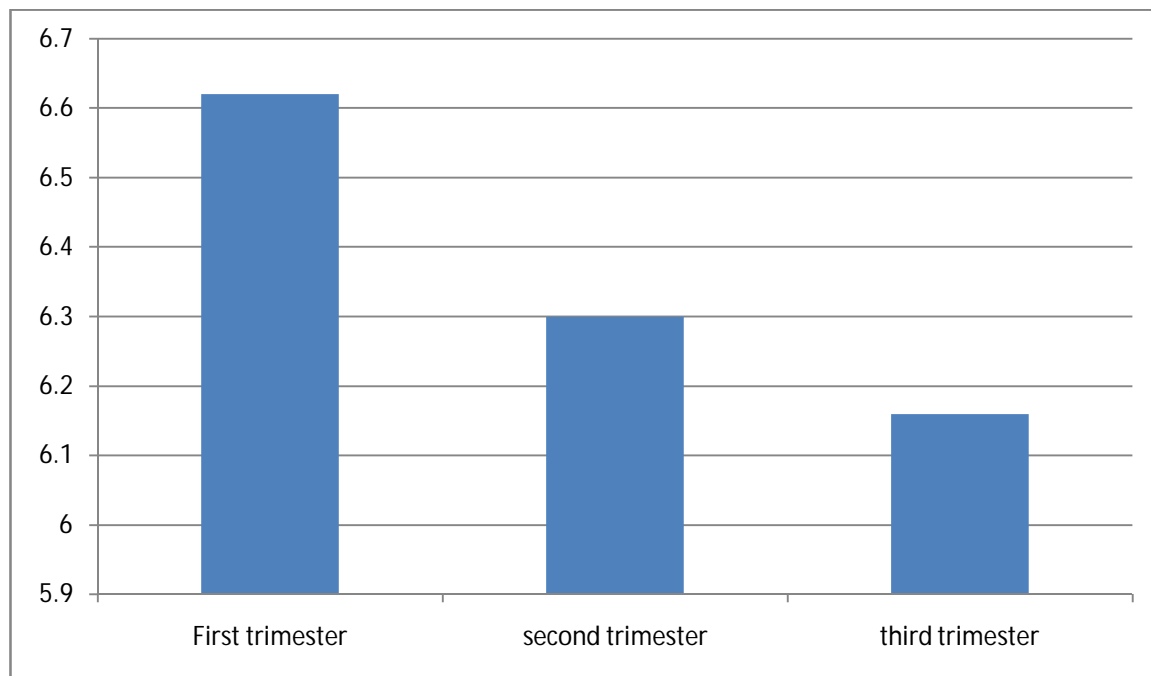


Figure (3.1) Comparison of total protein levels in pregnant women's with trimesters (mean \pm S.D).

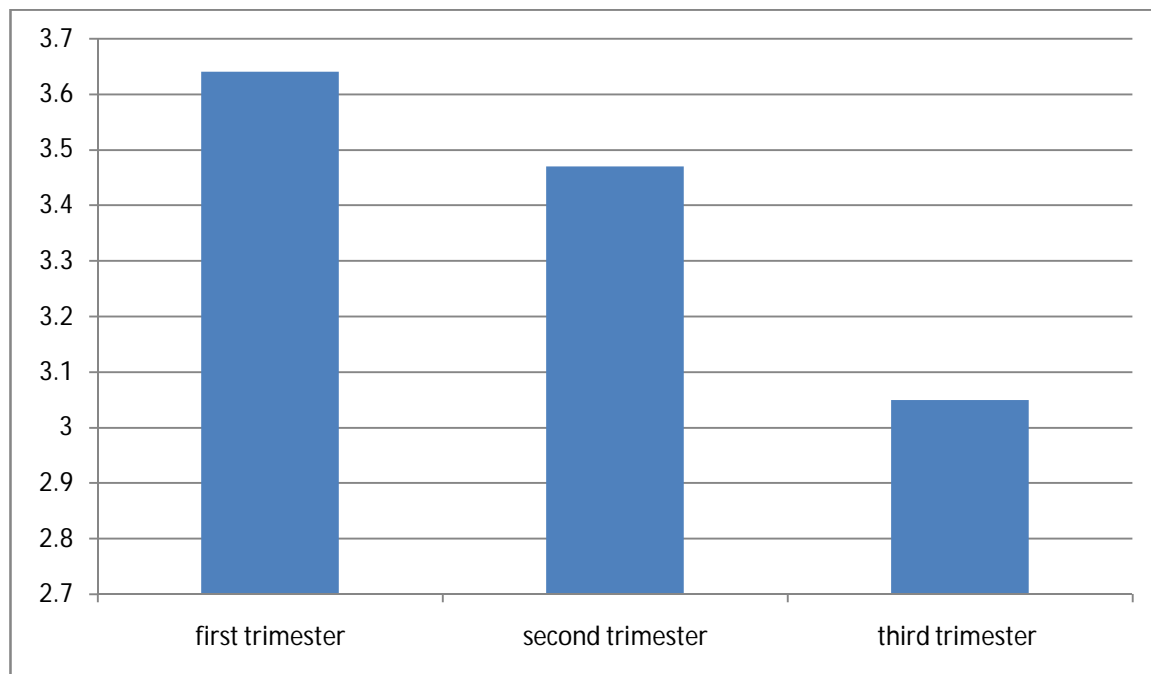


Figure (3.2) Comparison of albumin levels in pregnant women's with trimesters (mean ± S.D).

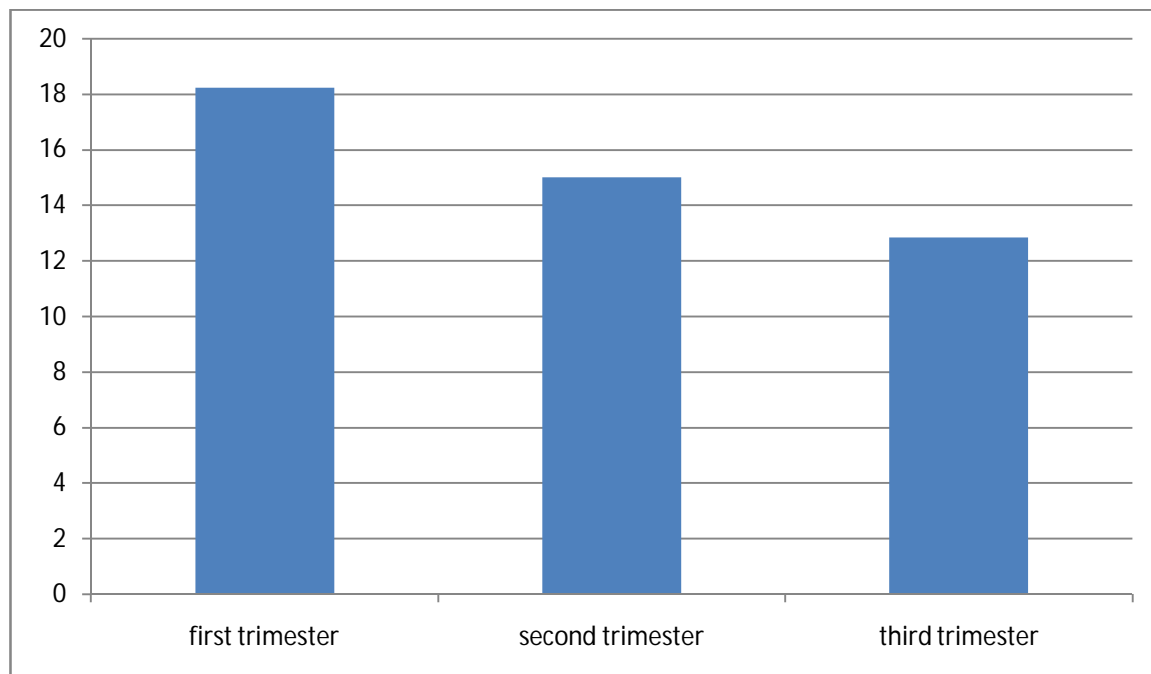


Figure (3.3) Comparison of urea levels in pregnant women's with trimesters (mean \pm S.D).