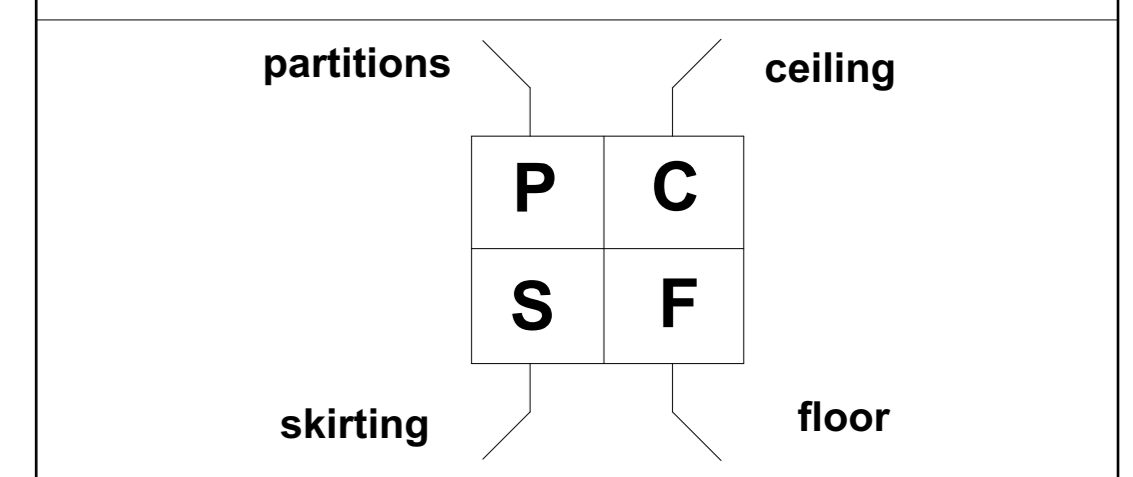




Remarks:

All Dimensions in metric units

DOORS			
SYM	HIGH	WIDTH	DESCRIPTION
D1	2.10	1.00	single hinged aluminum door
D2	2.10	0.80	single hinged aluminum door
D3	2.10	1.50	double hinged aluminum door



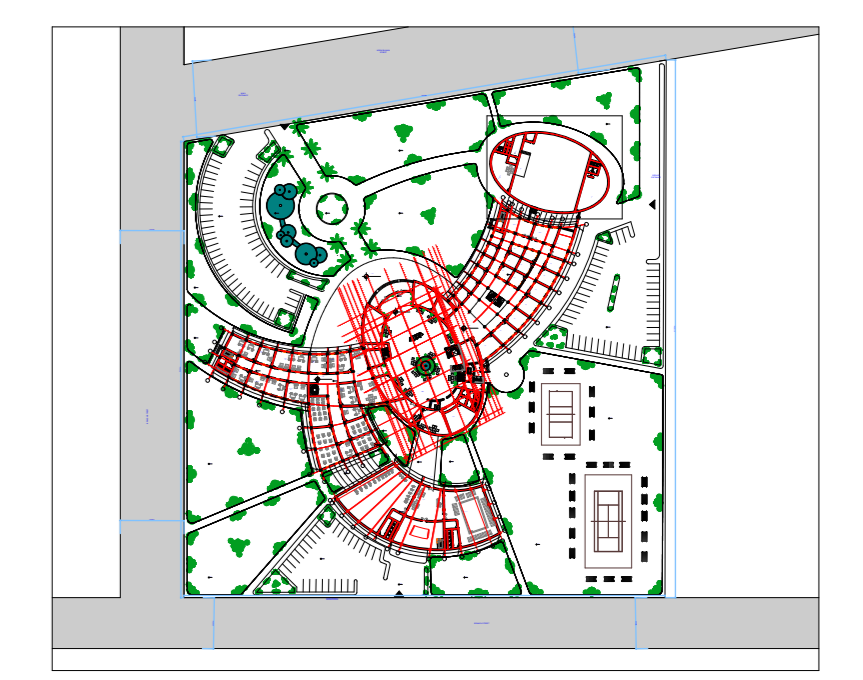
CEILING	
C1	FIBER FALSEN CEILING TILES (.60*.60 *1.5) cm
C2	ALUMINUM FALSEN CEILING TILES (.60*.60*.02) cm
C3	ACOUSTICAL FALSEN CEILING TILES

FLOOR	
F1	Maroo carpet 2.5 cm over Glue layer post-ic ovet Tiles 40*40*2 cm over P.C 10 cm over Normal sand 10 cm overHard core 0.75
F2	50*50*50) WHITE PORCELAIN TILES OVER SCREED 1:6 OVER D.P.C LAYER OVER P.C 10 cm OVER HARDCORE
F3	01*30*30)cm LIGHT BLUE CERAMIC TILES OVER SCREED 1:6 OVER D.P.C LAYER OVER P.C 10cm OVER HARDCORE

skirting	
S1	MARBLE (10*10*03)cm
S2	GRANITE (10*30*02)cm
S3	PORCELAIN (10*50*08)cm

partitions	
P1	CERAMIC TILES (30*25*05) OVER C/S 1:6 OVER ONE BLOCK WALL 1:6 CEMENT MORTER
P2	ACOUSTICAL PLSTER OVER ONE BLOCK WALL INTERNALLY ACRILIC EMULSION PAINT OVER PLASTER 1:6 EXTERNALLY

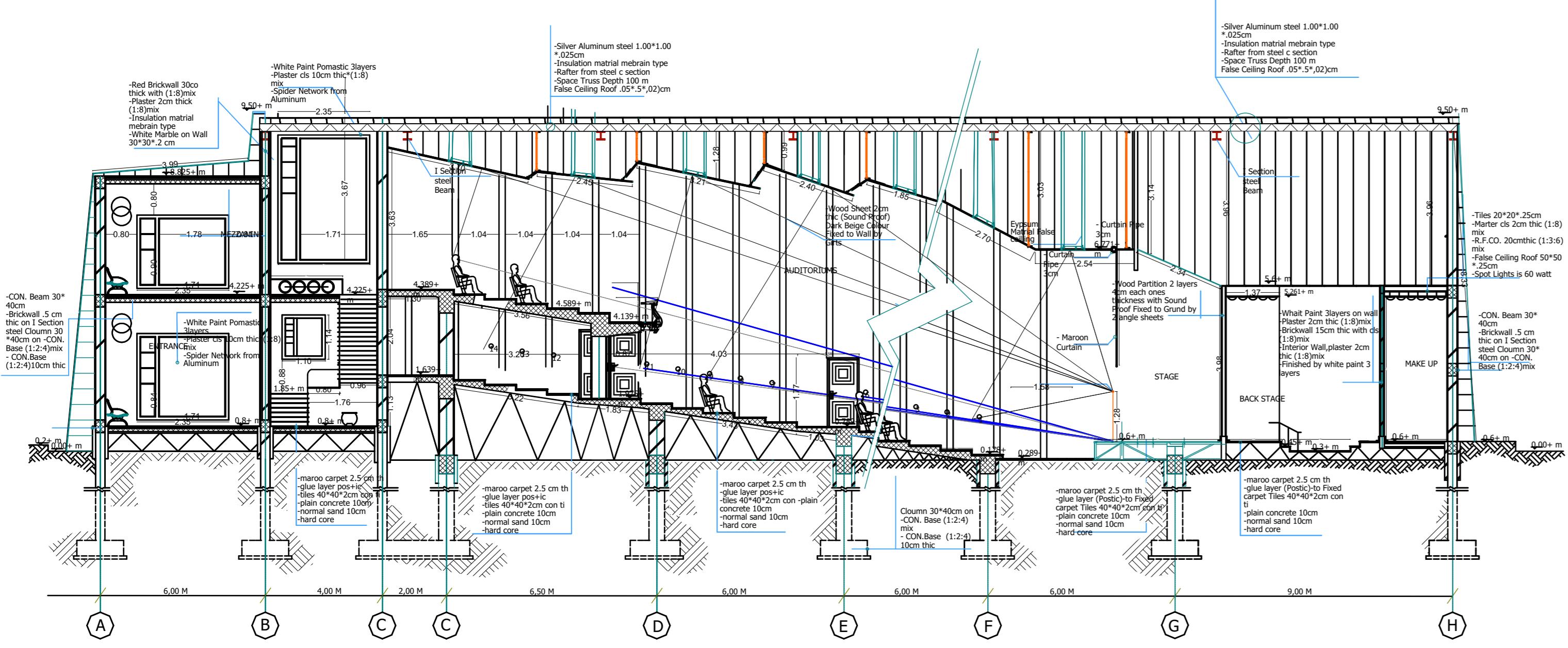
KEY PLAN



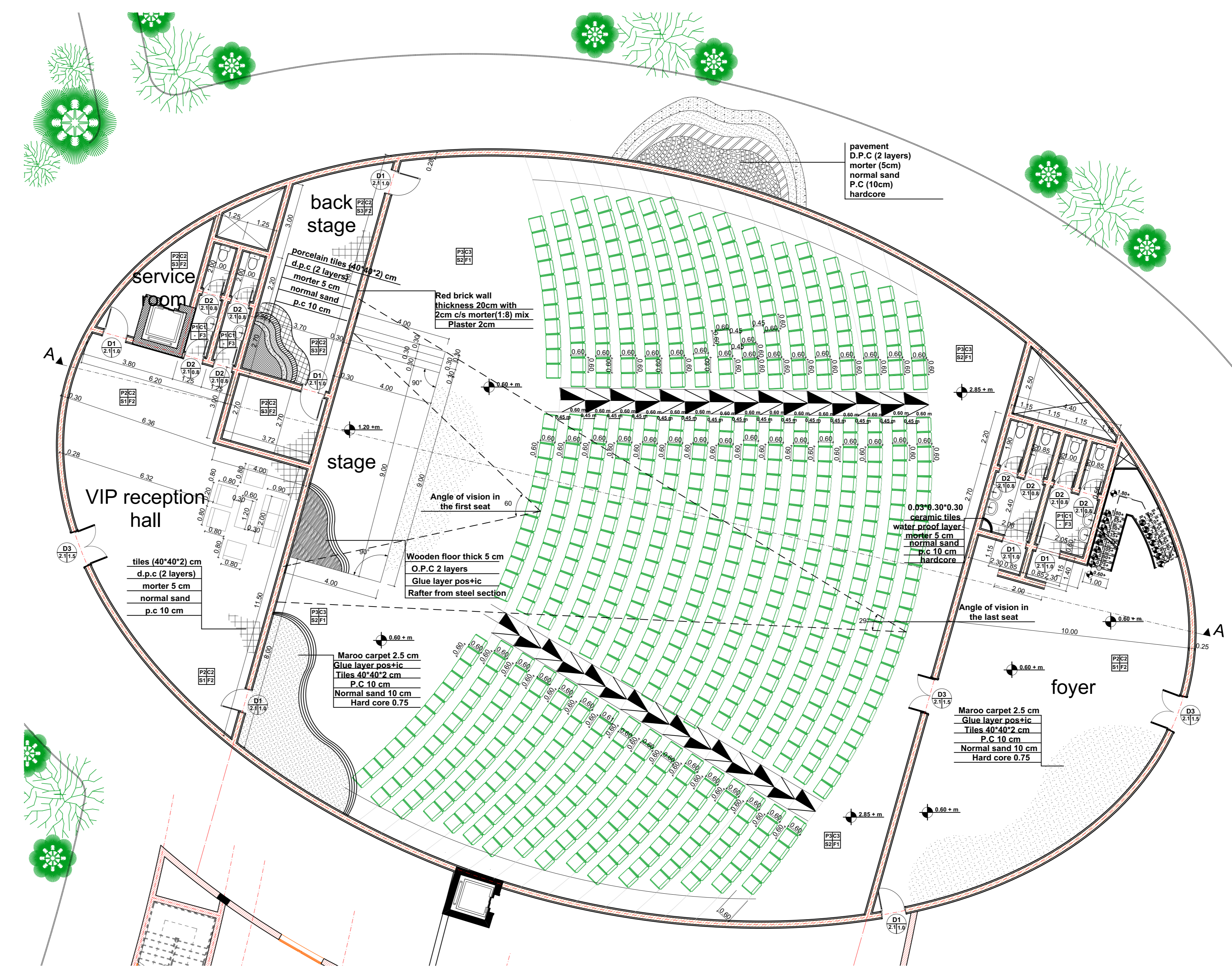
PART PLAN CONFERENCE HALL

Sudan University of Science & Technology
College of Architecture & Planning
5th Year
Sudanese Residency For communication Company's

Designed By :
Nazik Hassan Mohammed
Supervision:
T. NAGWA ALMOFTI



PART SECTION :CONFERENCE HALL



PART PLAN :CONFERENCE HALL