

Parasite collected from wild <i>Tilapia sp.</i> in Jabel Awlia dam							Total length (cm)	NO
Endo parasite				Ecto parasite				
Spleen	Gonad	Kidney	Liver	Blood	Gill	skin		
+++	++	++	++	-	+	-	21cm	1
++	++	+++	++	+	+	++	20cm	2
+	+	++	+	++	++	-	25cm	3
+	-	-	+	++	-	-	21cm	4
+	+	+++	+	++	-	-	20cm	5
-	-	+++	++	+	+++	+	19cm	6
+	++	+	-	+	+	+	25cm	7
+	+++	++	+	-	+	++	26cm	8
-	-	++	+	-	++	--	24cm	9
-	-	+	-	-	+	++	19cm	10

Parasite collected from pond <i>Tilapia sp.</i> in alshagara central research							Total length (cm)	Appendix (2) Parasite NO
Endo parasite				Ecto parasite				
Spleen	Gonad	Kidney	Liver	Blood	Gill	skin		
-	++	-	-	++	+	-	11cm	1
-	+	+	++	++	+	-	20cm	2
-	-	+	-	+	++	-	12cm	3
+	-	+	+	+	-	+	21cm	4
+	-	-	+	++	-	+	20cm	5
++	++	-	+	-	++	-	17cm	6
-	-	-	+++	++	-	+	15cm	7
+	-	++	++	-	+++	++	21cm	8

+	-	+	--	-	++	+	13cm	9
+	-	-	++	-	-	-	15cm	10

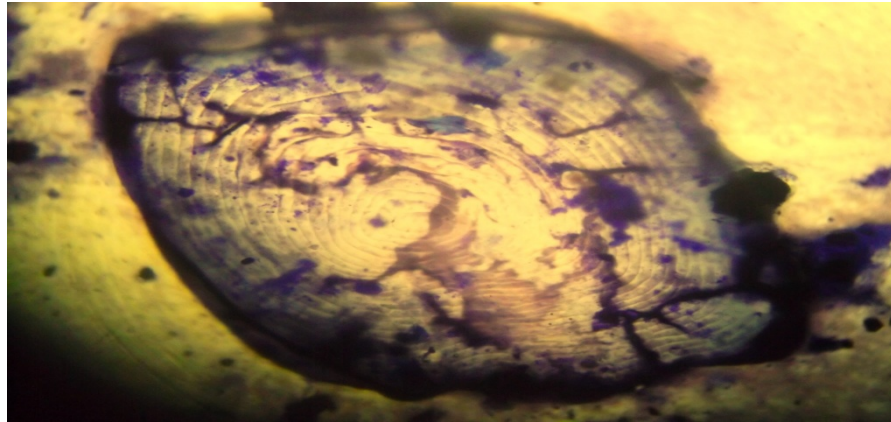
Parasite collected from wild <i>clarias gariepinus</i> in Jabel Awlia dam							Total length (cm)	Appendix (3) Parasite NO	
Endo parasite				Ecto parasite					
Spleen	Gounod	Kidney	Liver	Blood	Gill	skin			
++	++	-	++	-	-	+	29cm	1	
+	+	++	++	++	+	+	20cm	2	
++	++	-	+	+	+	++	38cm	3	
+	-	+	+	+	+	-	27cm	4	
+	-	+	+	+	++	-	32cm	5	
++	+	+	-	-	+	++	17cm	6	

+++	+	++	+	+	+	+	+	25cm	7
++	+	++	+	+	-	+	+	26cm	8
+	+	--	-	-	-	-	+	31cm	9
+	+	++	-	-	-	-	+	19cm	10

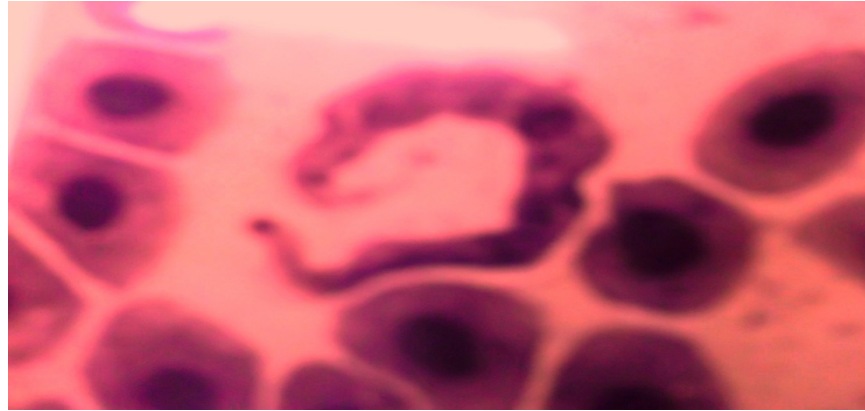
Appendix (4) Parasite collected from pond *Clarias gariepinus* in alshagera central research

Parasite collected from pond <i>clarias gariepinus</i> in alshagera central research							Total length (cm)	Serial No
Endo parasite				Ecto parasite				
Spleen	Gouno d	Kidney	Liver	Blood	Gill	skin		
+	-	-	+	-	++	-	19cm	1
+	++	+	+	-	+	-	21cm	2
+	++	+	-	+	+	+	30cm	3
-	-	-	-	-	+		20cm	4

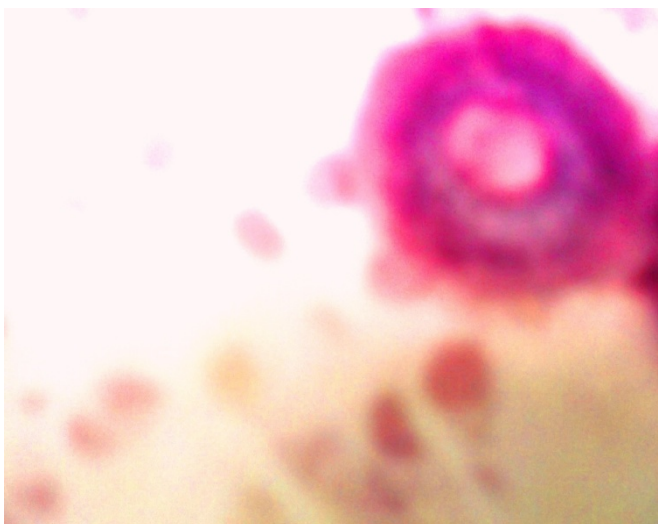
+	+	+	+	+	-	+	32cm	5
-	+	+	-	-	+	-	17cm	6
+	-	+	+	-	-	+	20cm	7
-	++++	-	+	+	++	+	25cm	8
+	++++	+	-	+	+	-	32cm	9
+	+	++	++	+	+	+	31cm	10



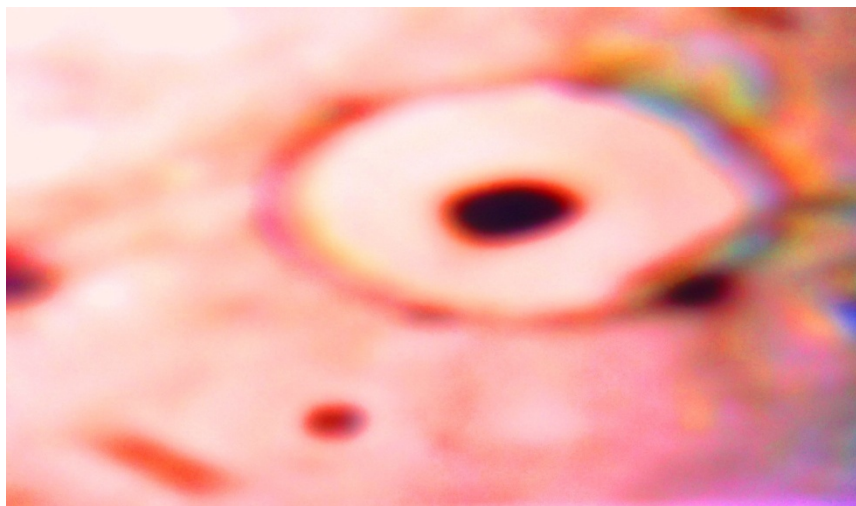
Chilodonella Sp. (gill of Tilapia sp.)



Trypanosome sp.. from(blood of Tilapia sp.)



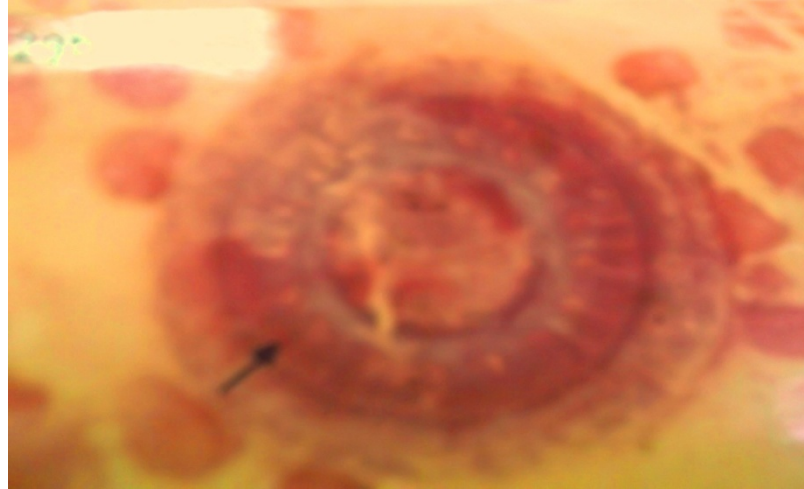
Trichodina Sp. From (gill of Clarias gariepinus)



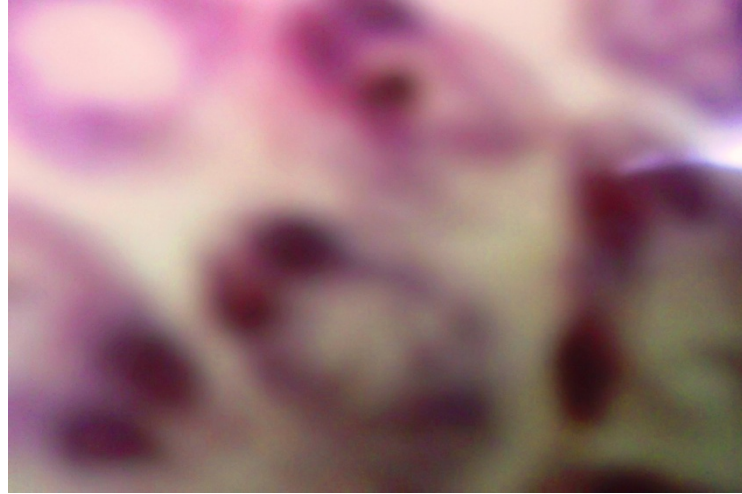
Microspora Sp. From(gill of Clarias gariepinus)



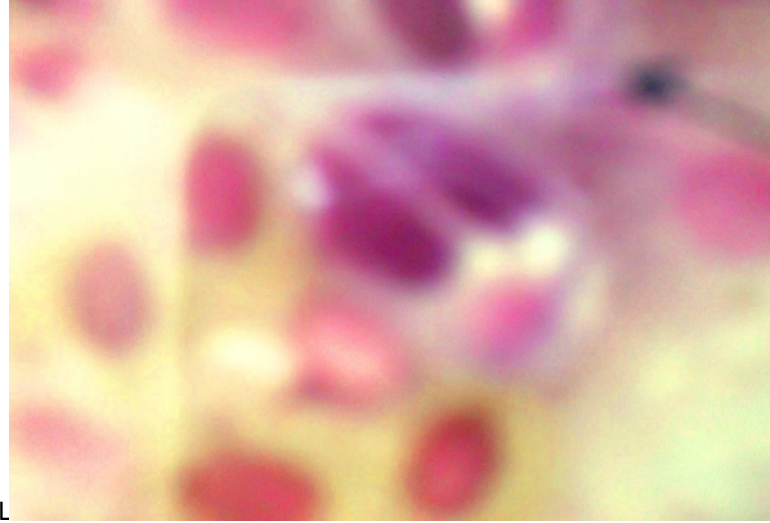
Trypanosome Sp. (In spleen of Claries gairpinus)



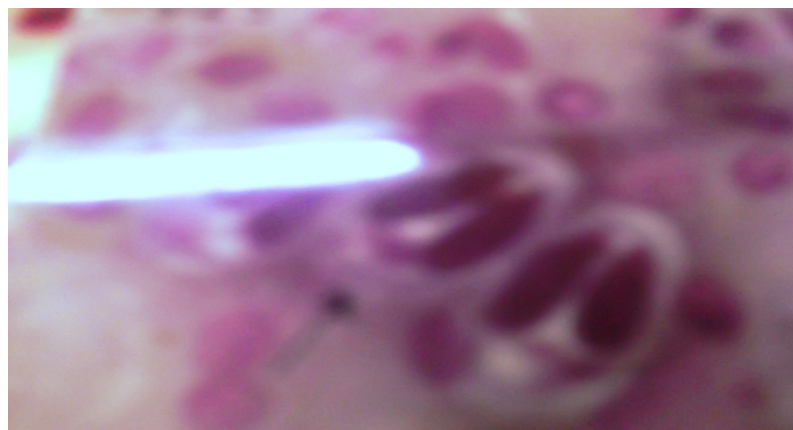
Trichodinida Sp.(In gill of Tilapia)



Hexamita Sp.(In spleen of Clarias gairpinus)



Myxobolus Sp. (kidney of Ttilapia sp.)



Myxobolus Sp. (spleen of Tilapia sp.)