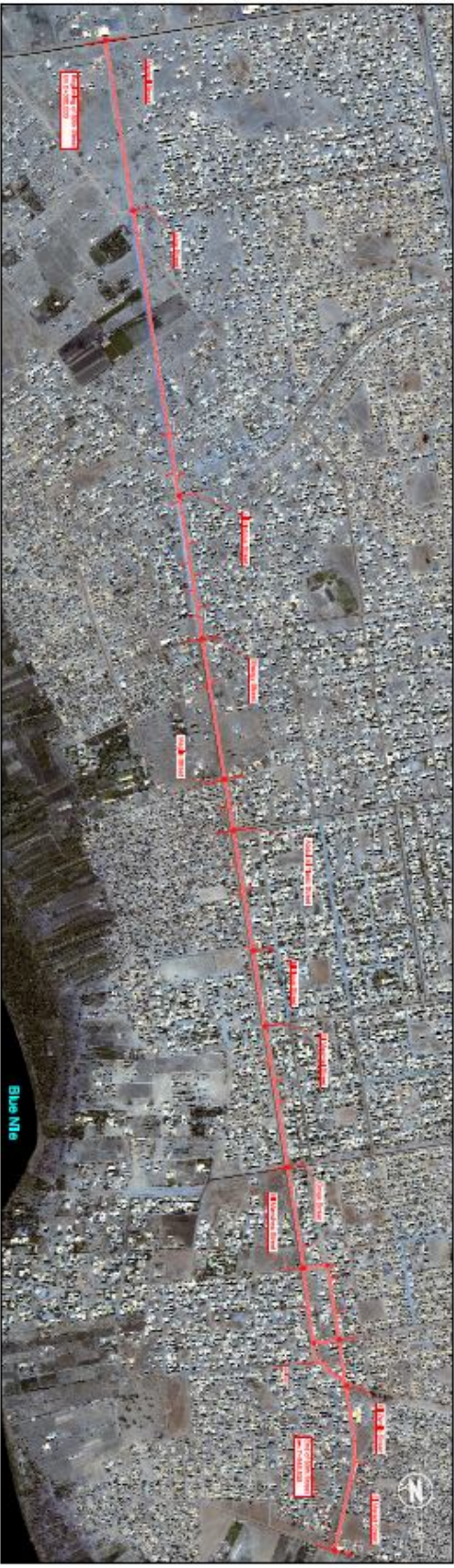


Sudan Map

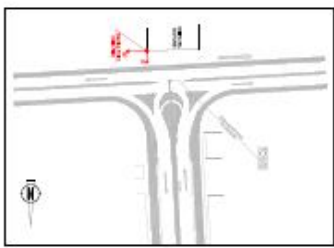


Extract from Map of Khartoum



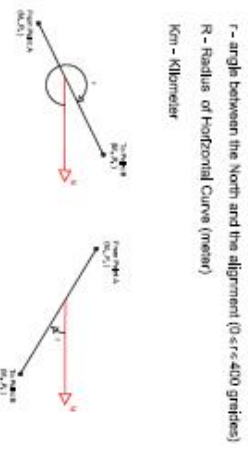


Referential and Coordinates System



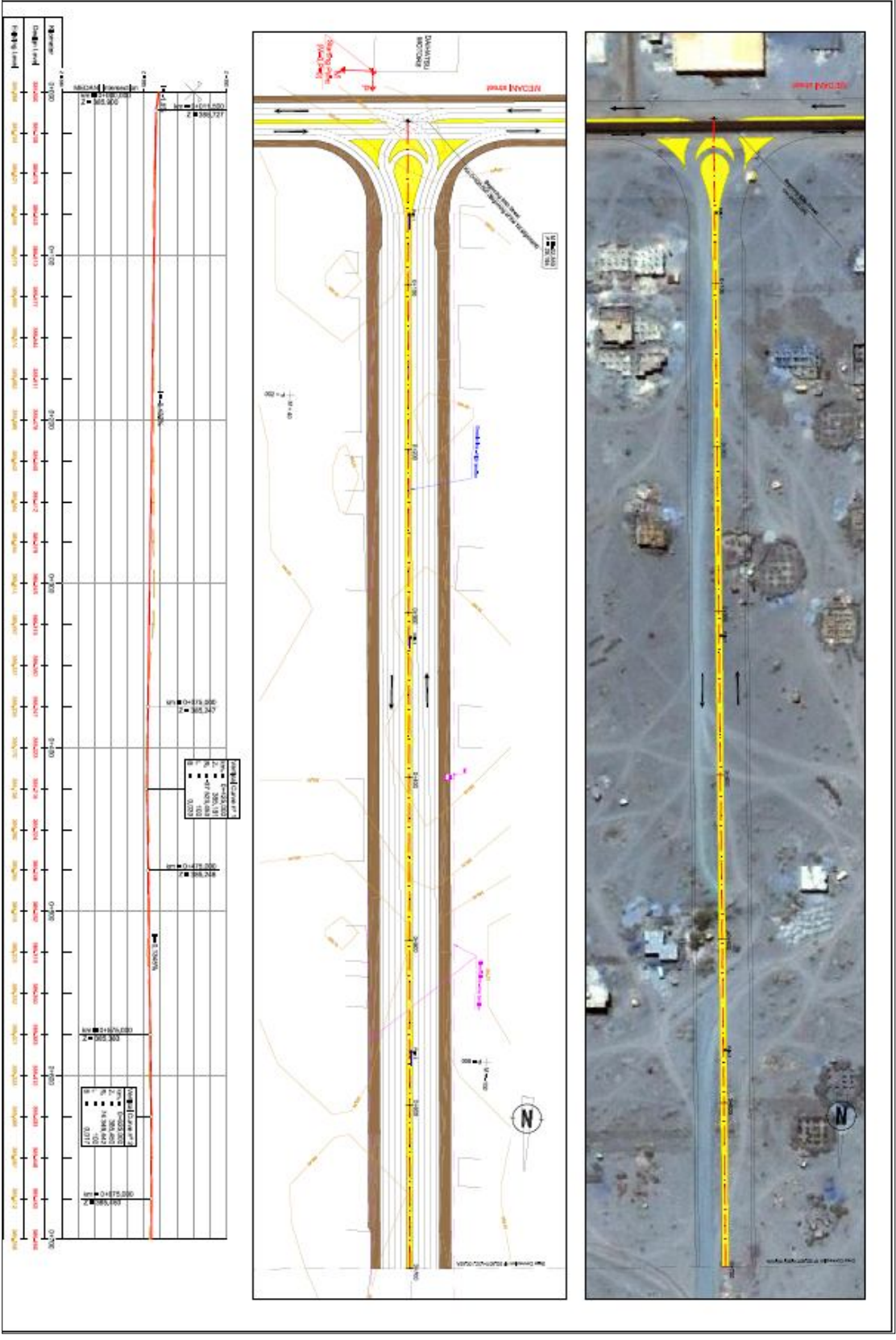
M - Meridum
P - Perpendicular

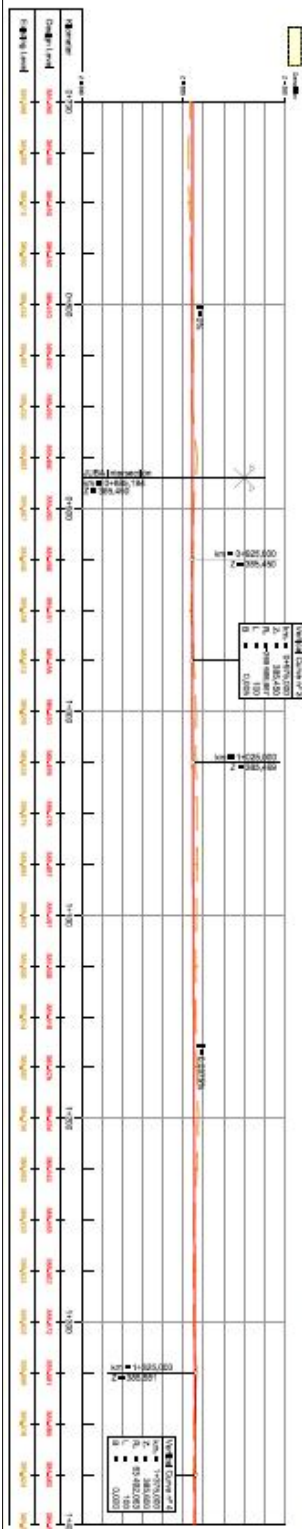
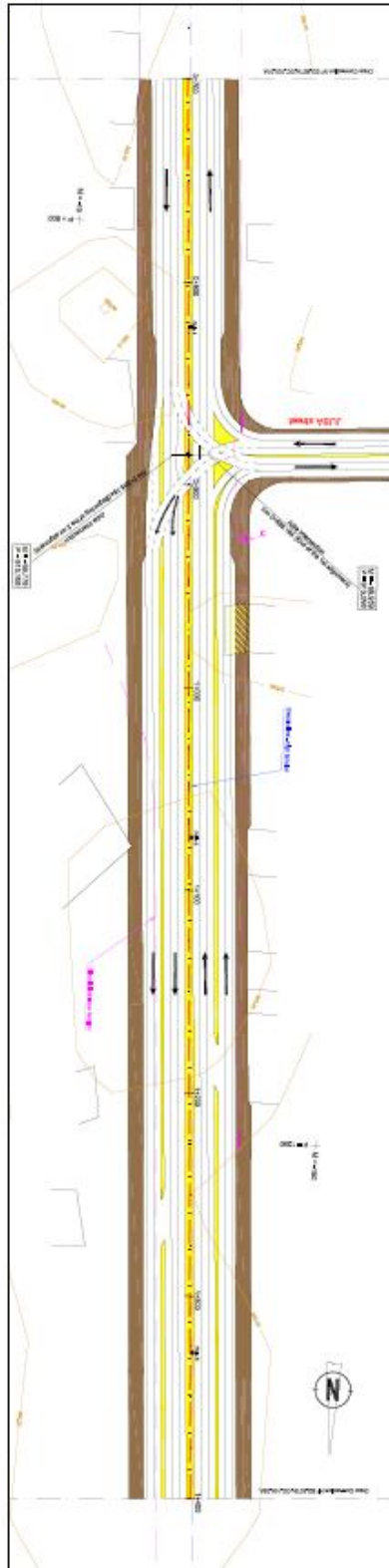
Horizontal Alignment

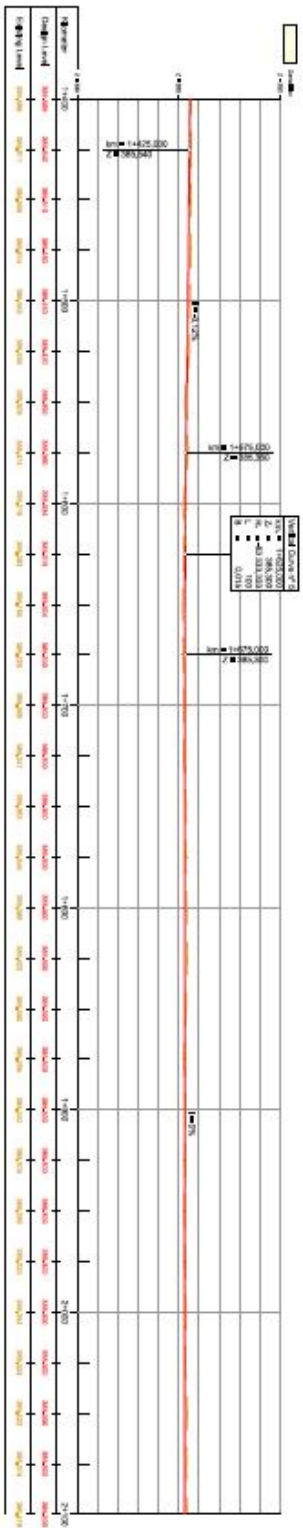
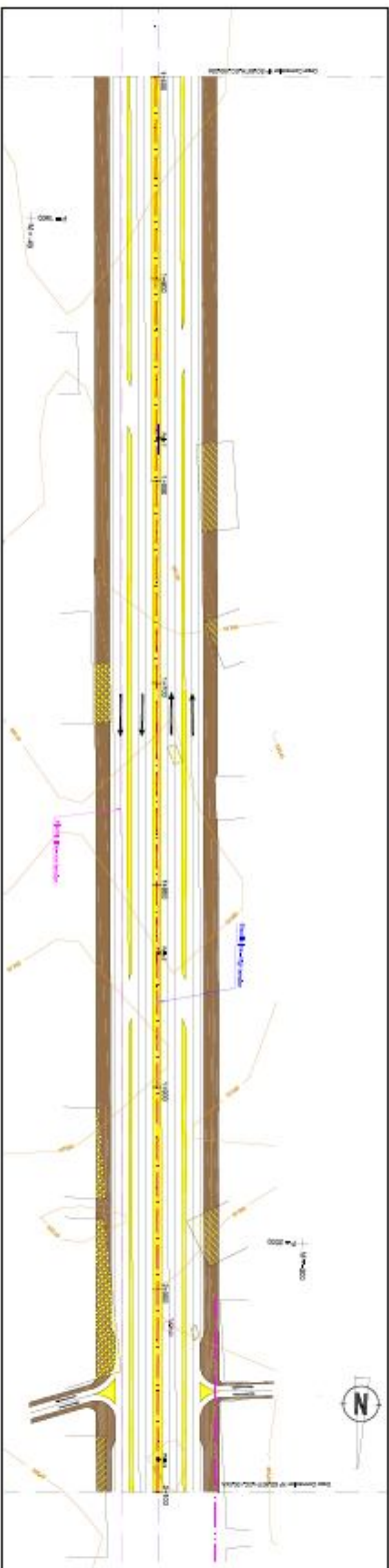


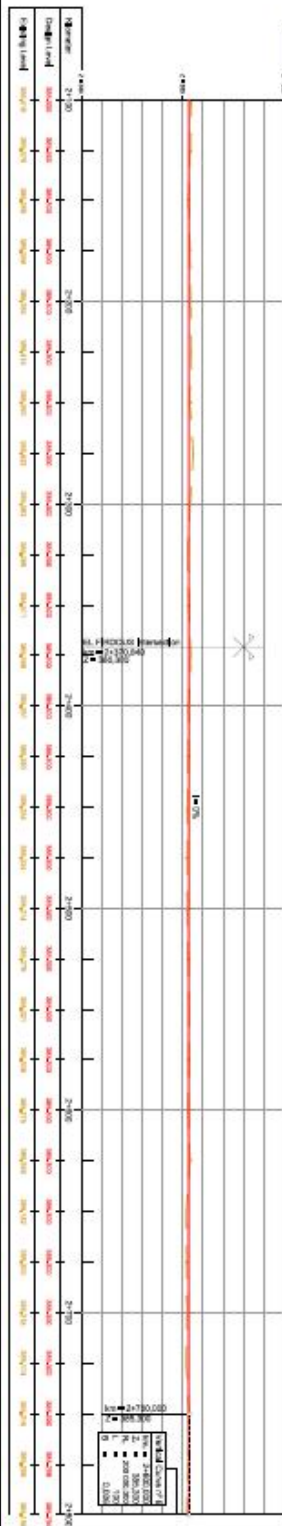
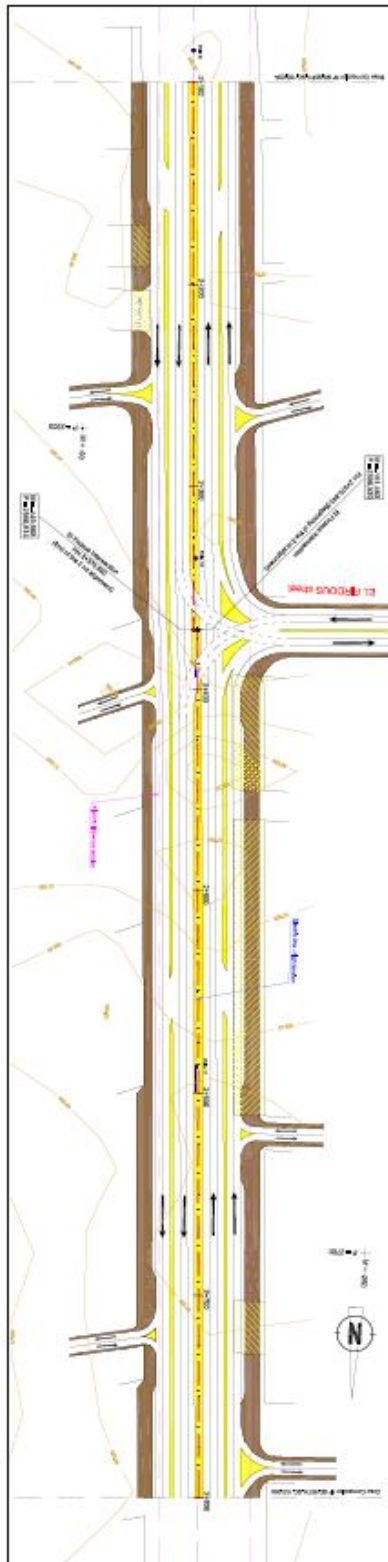
Vertical Alignment

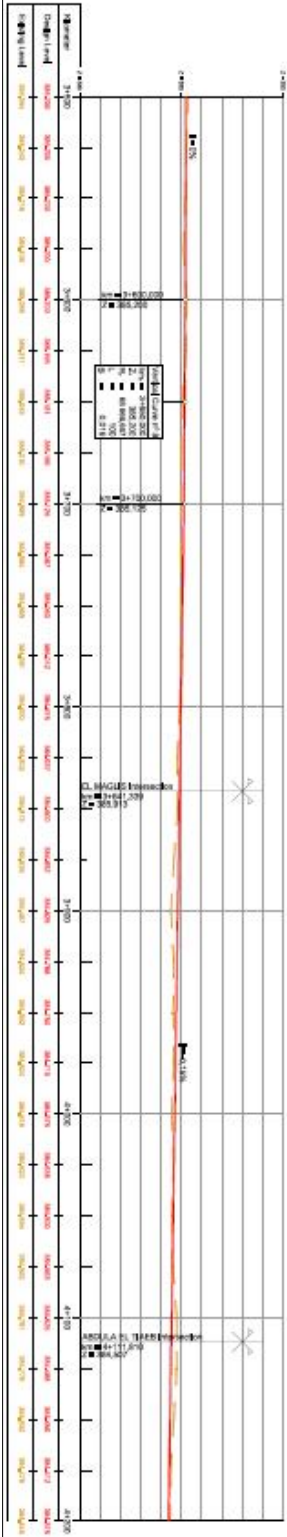
Z - Level (meter)
Km - Vertical Point of Intersection
Z_i - Vertical Point of Intersection Level
R_v - Radius of Vertical Curve (meter)
L - Length of Vertical Curve (meter)
B - Vertical Curve Slope (meter)
i - Longitudinal Slope (tangent grade in percent)

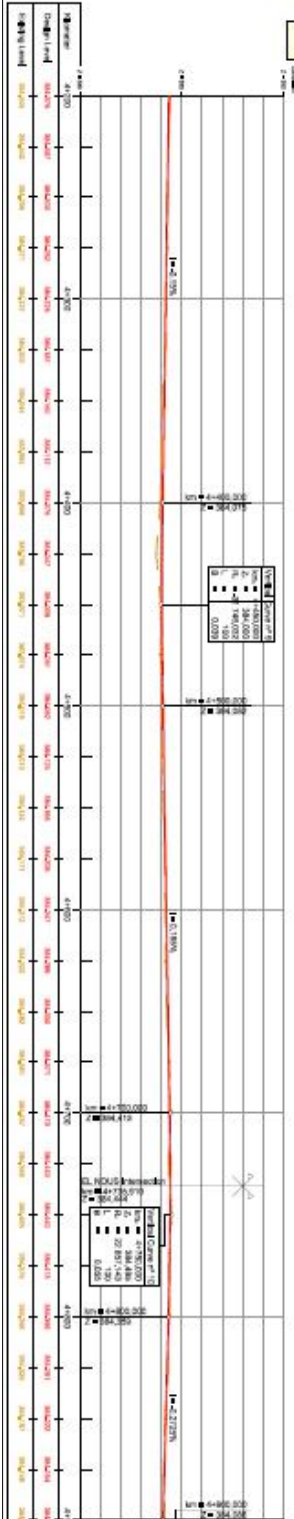
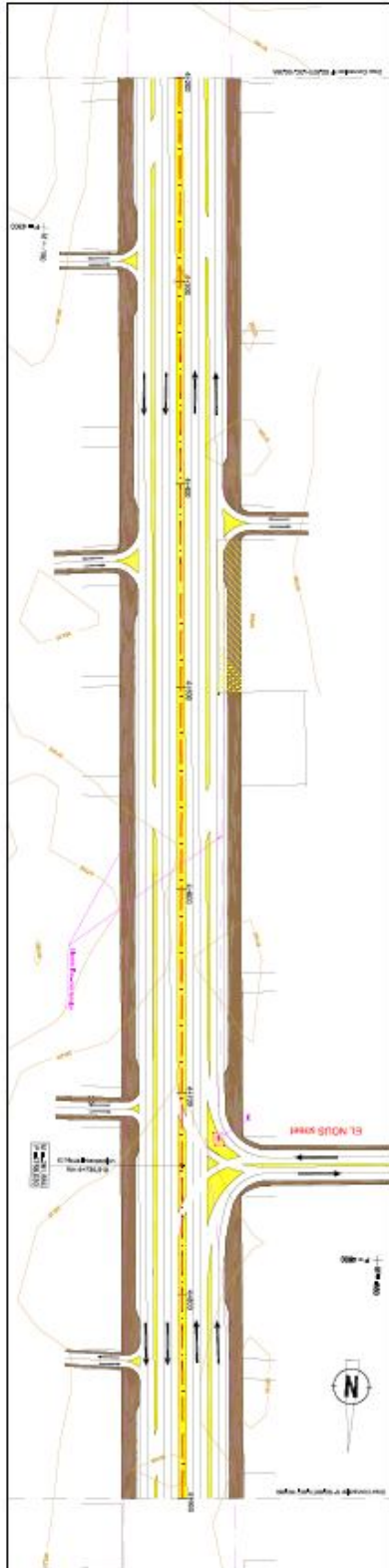


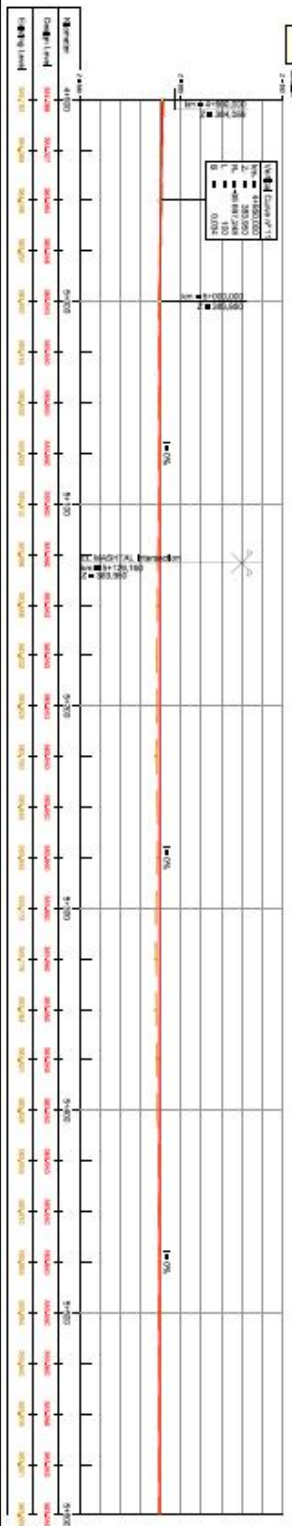
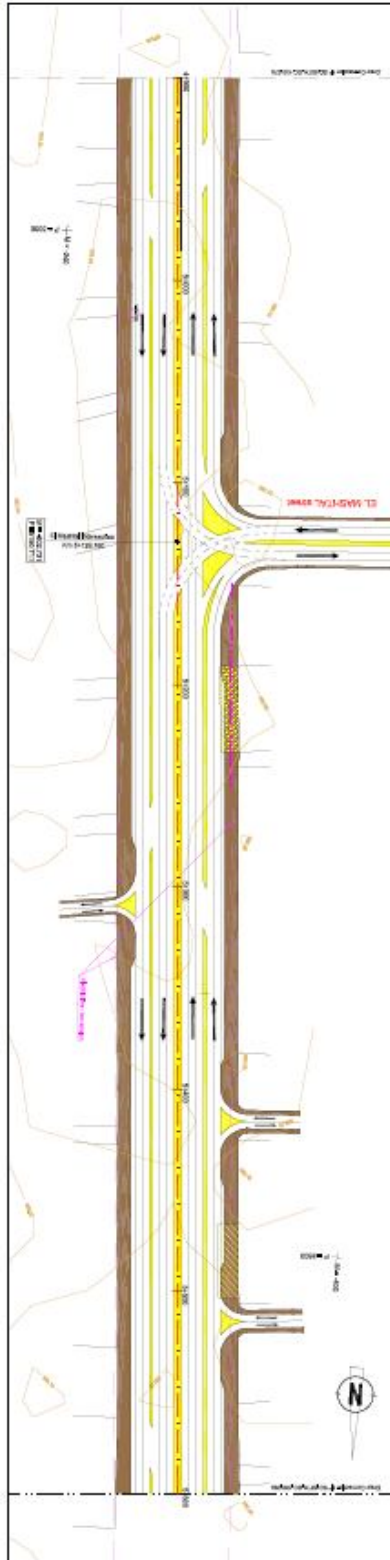


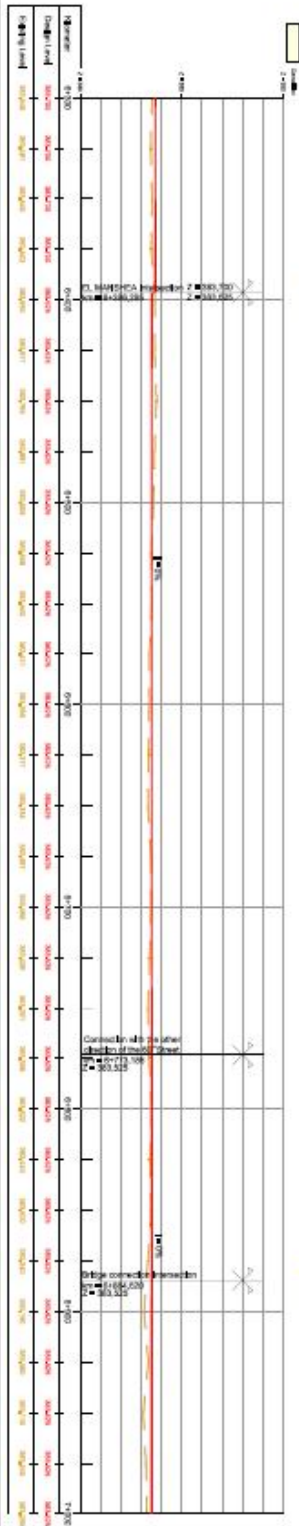
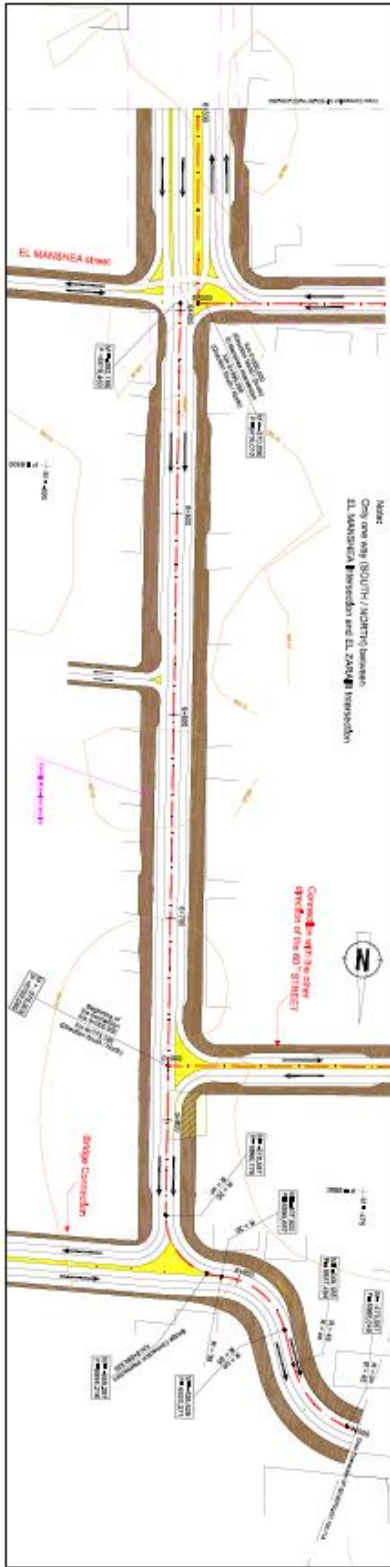


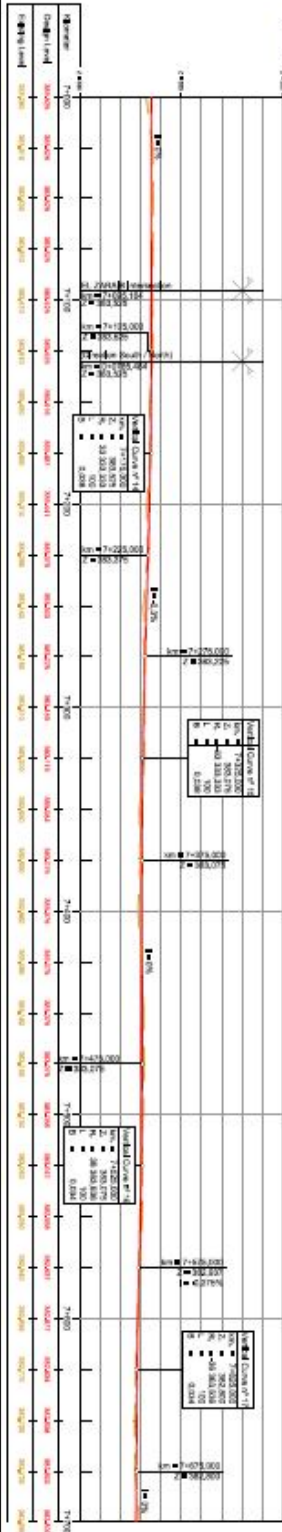


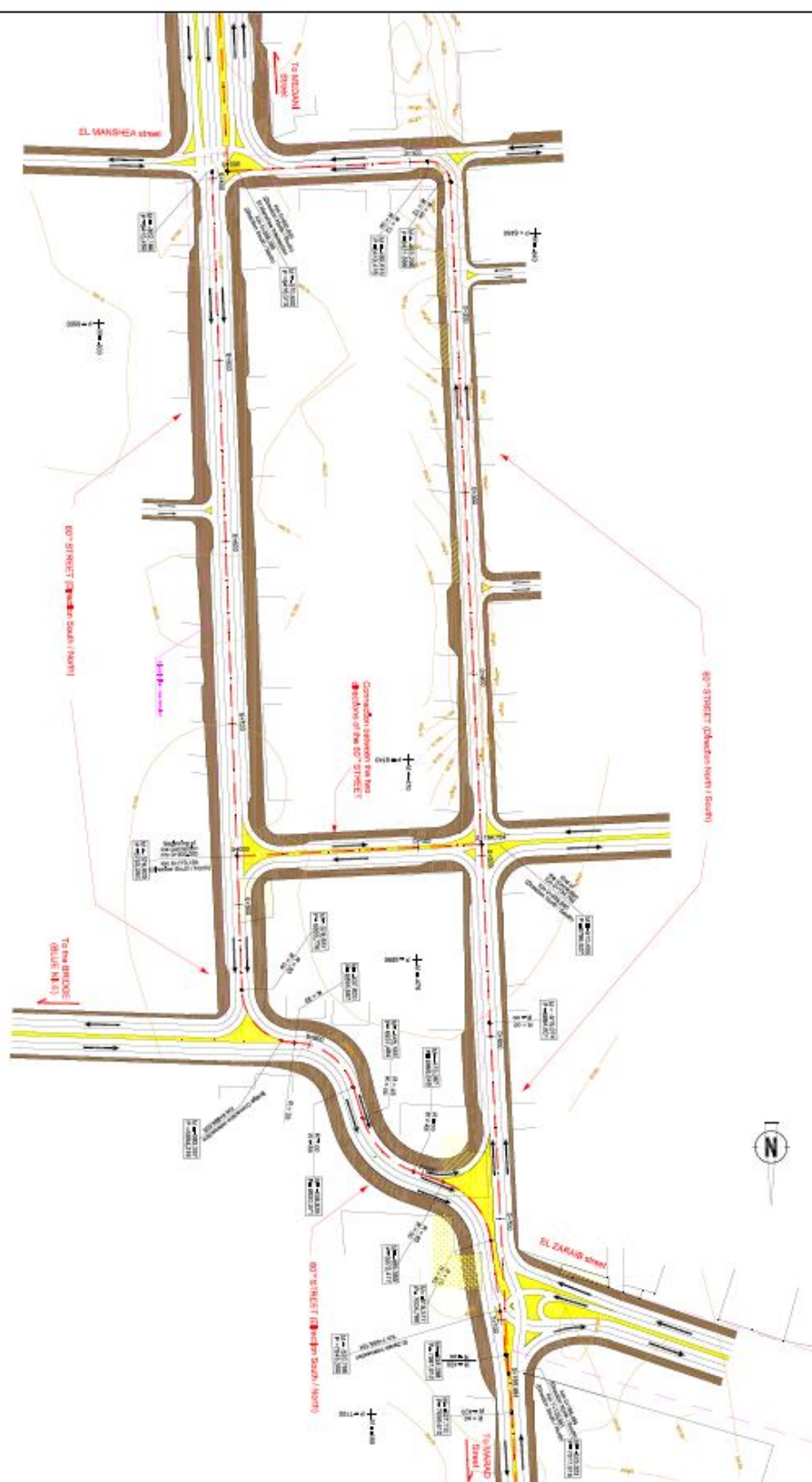


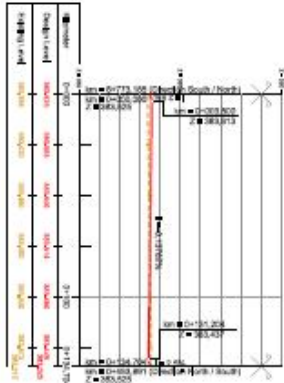
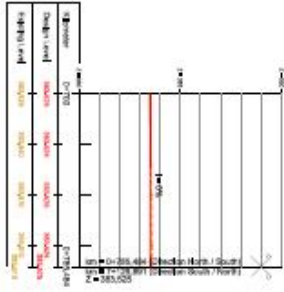


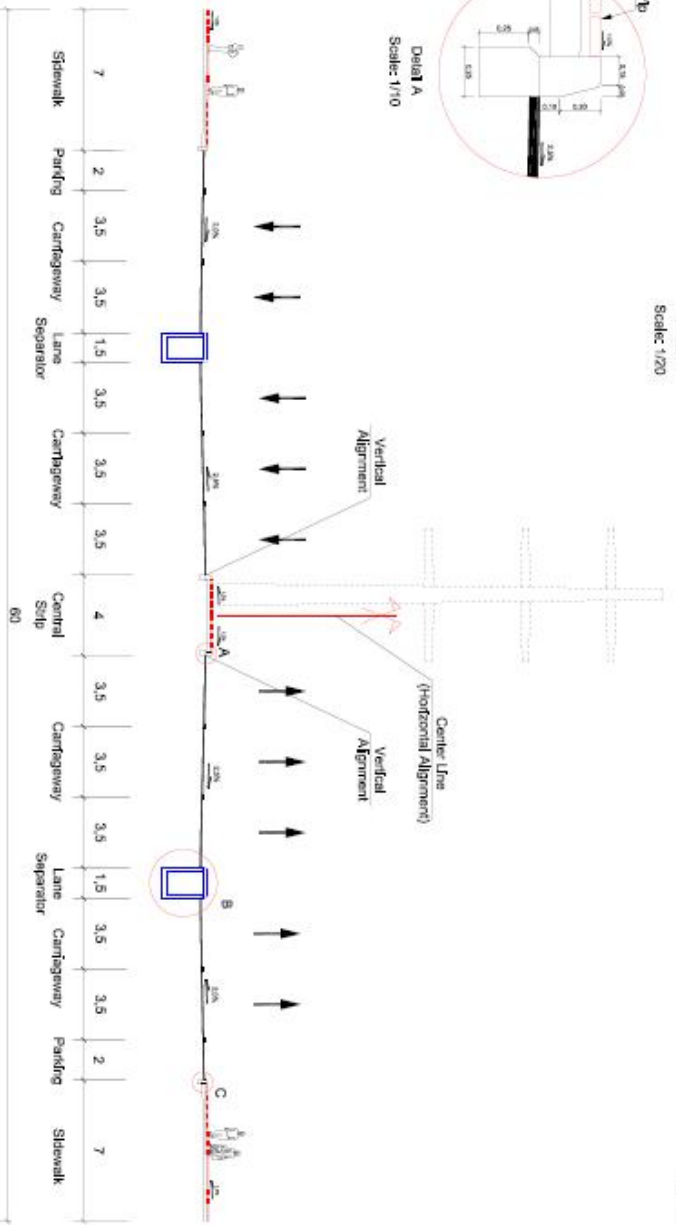
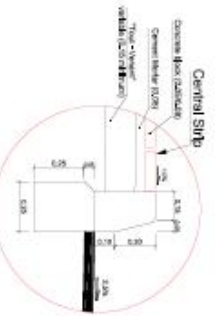
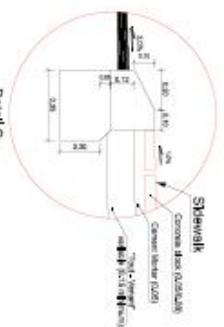
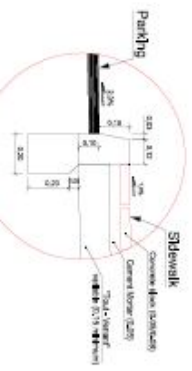
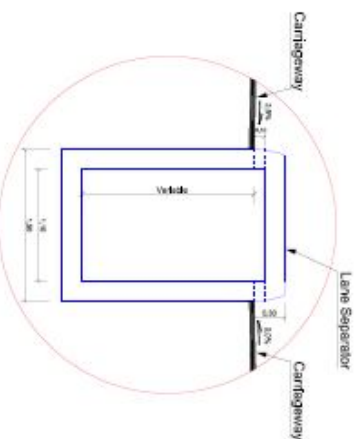


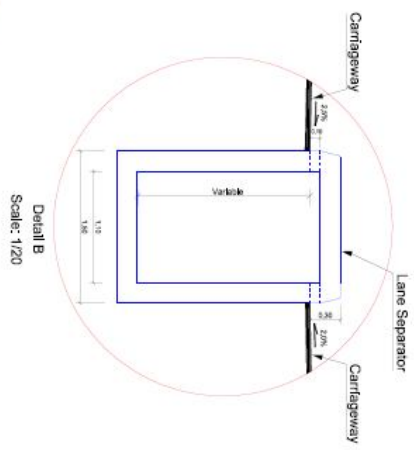




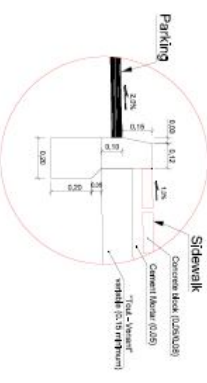




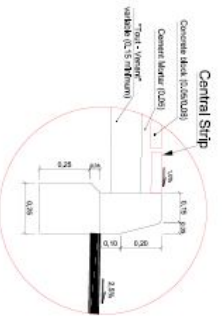
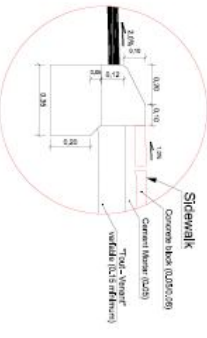




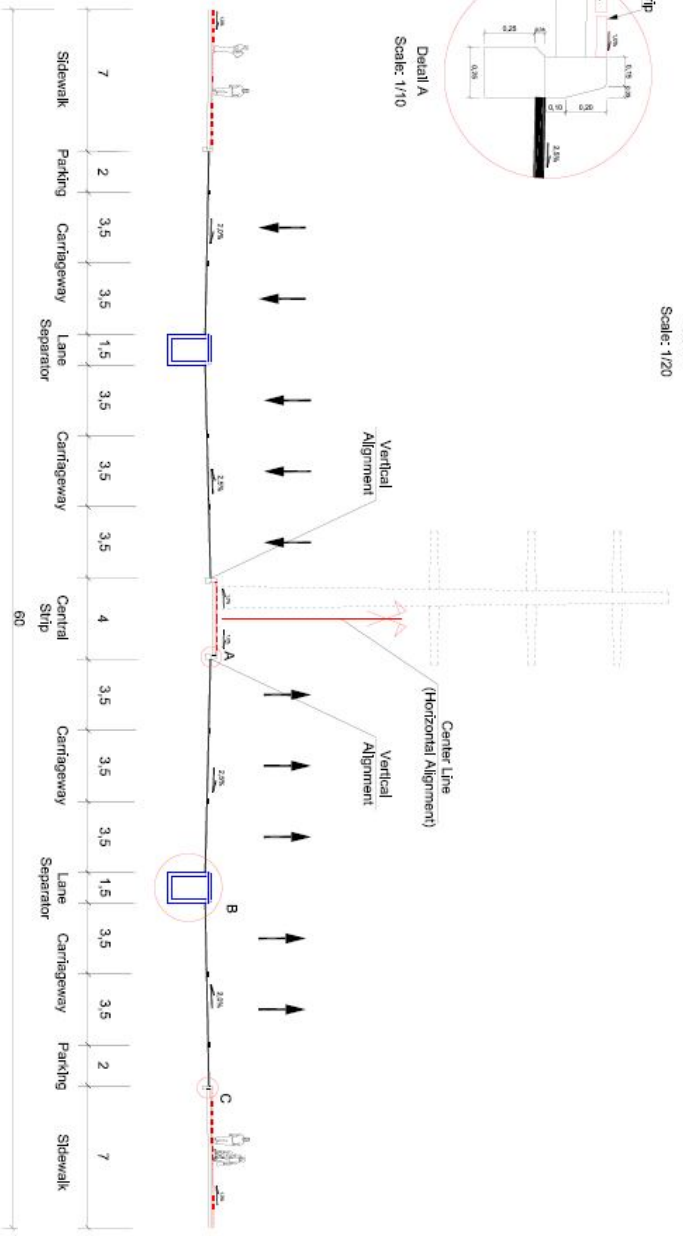
Detail B
Scale: 1/20

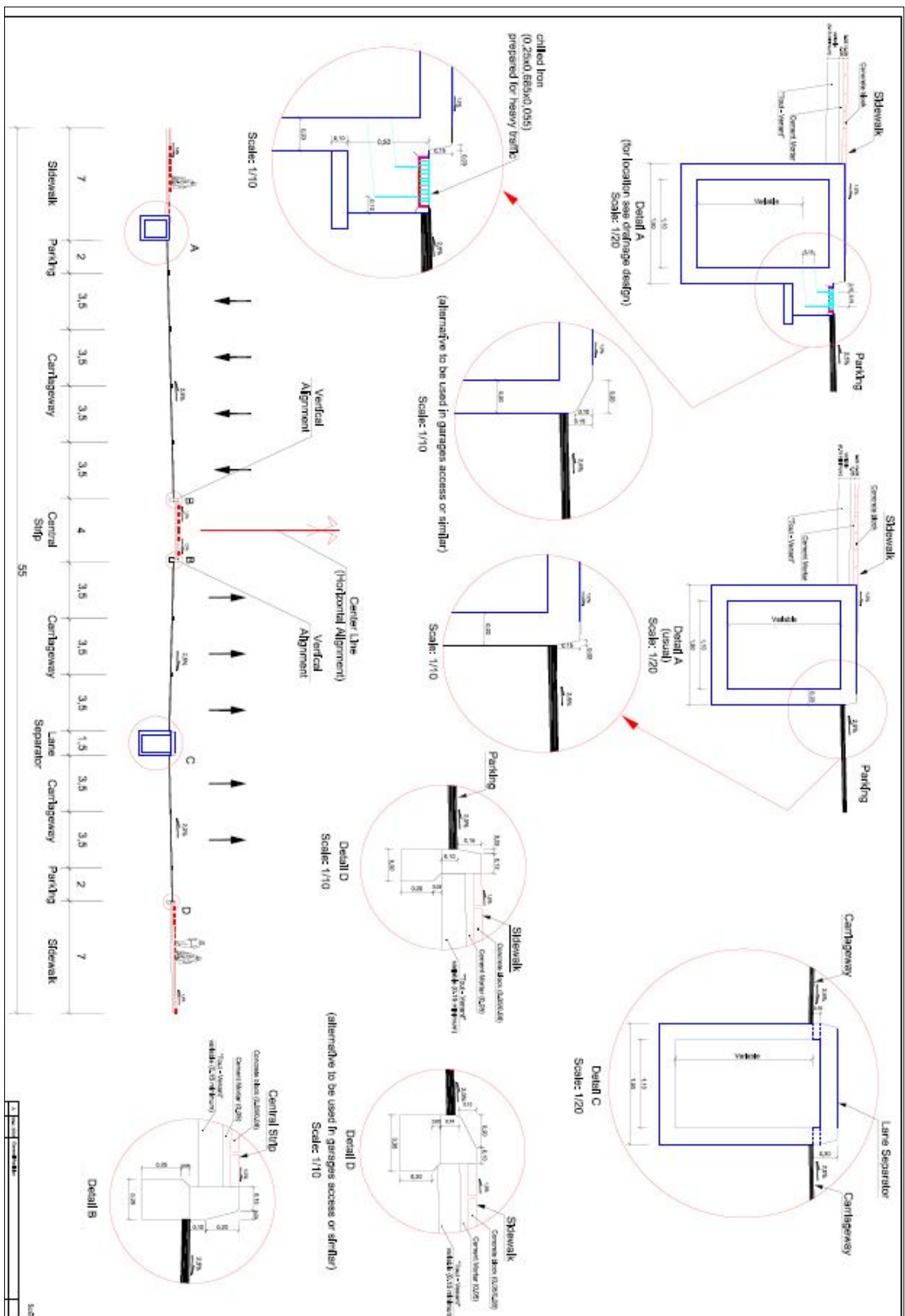


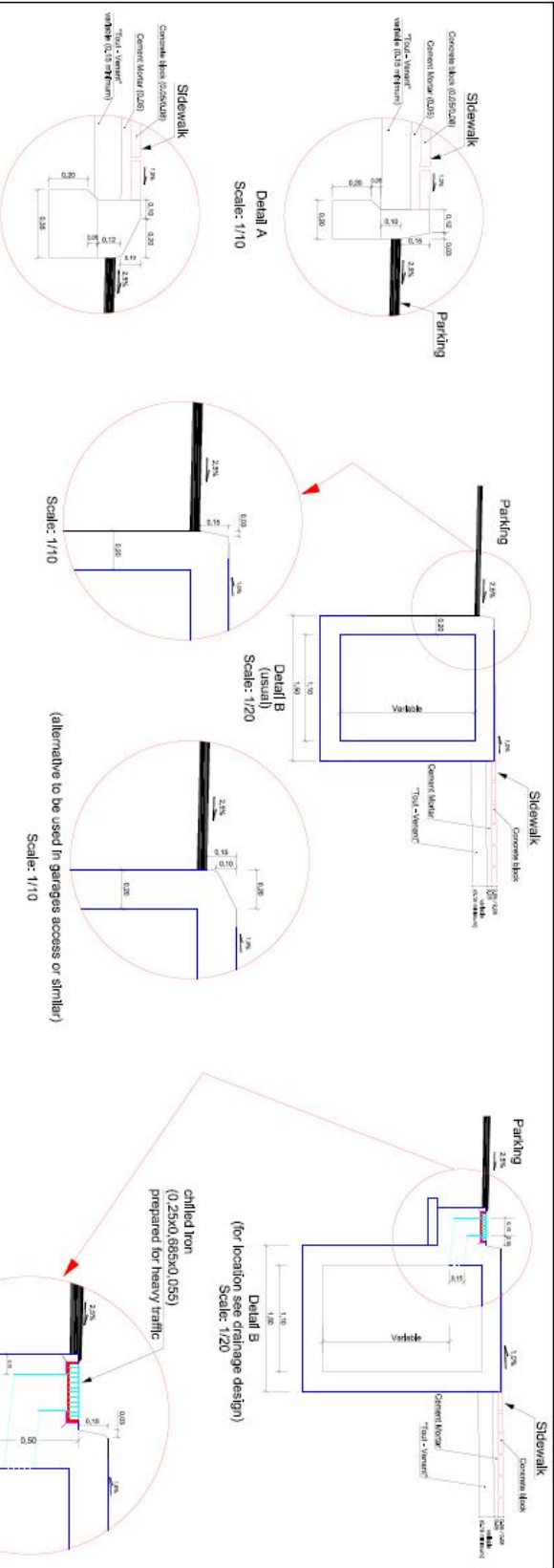
Detail C
Scale: 1/10
(alternative to be used in garages access or similar)



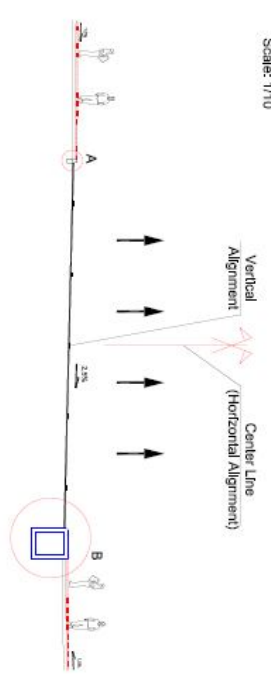
Detail A
Scale: 1/10



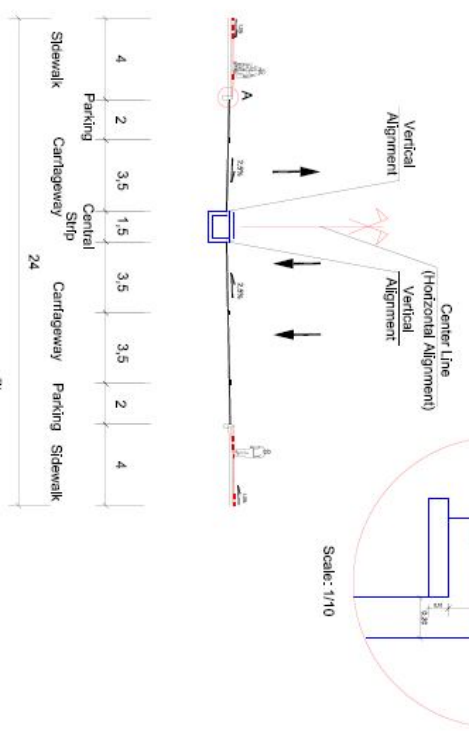




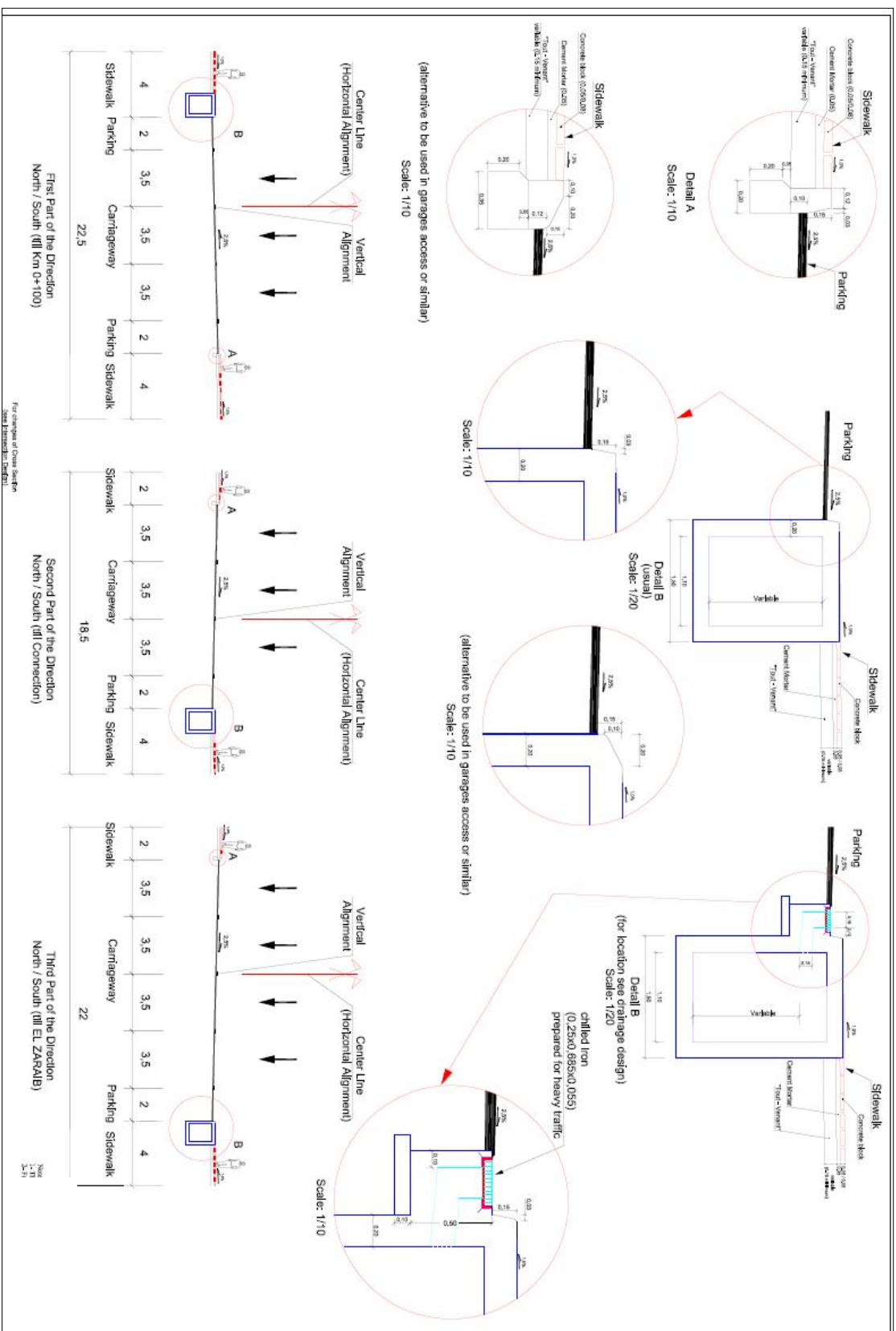
(alternative to be used in garages access or similar)
Scale: 1/10

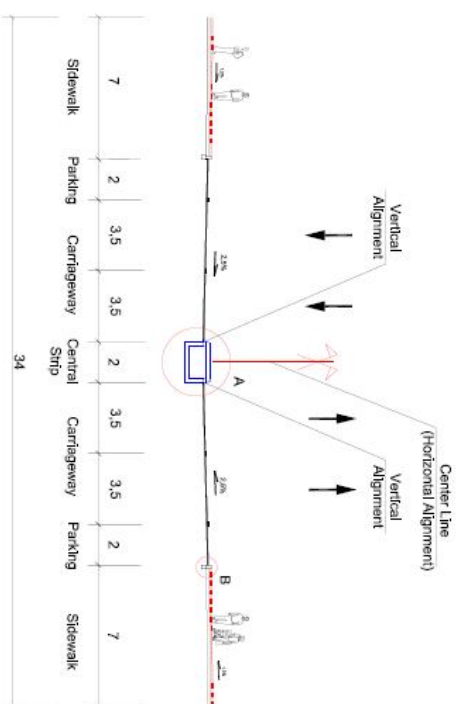
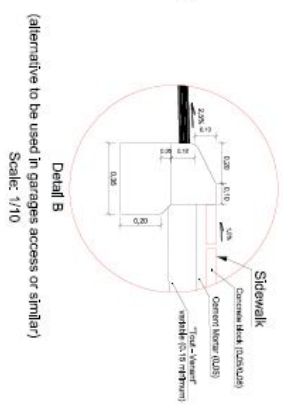
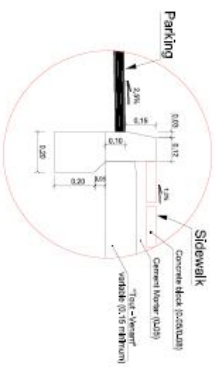
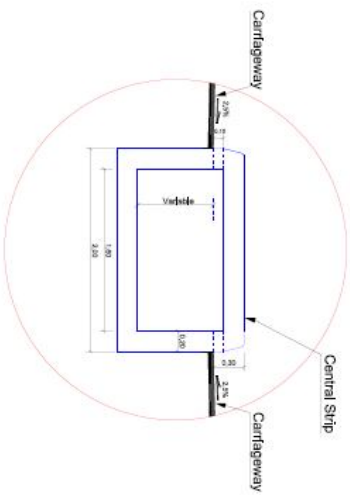


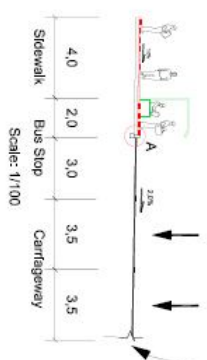
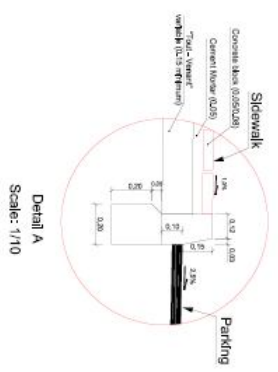
Direction South / North - Between EL MANSHEA Street and EL ZARAIB



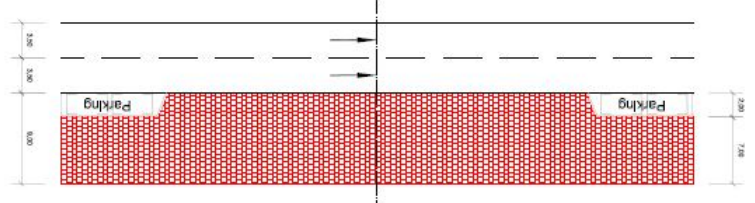
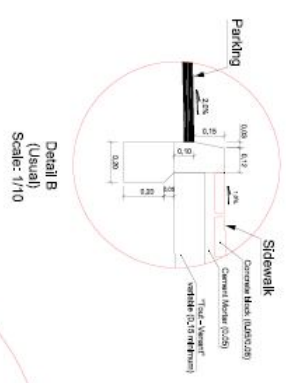
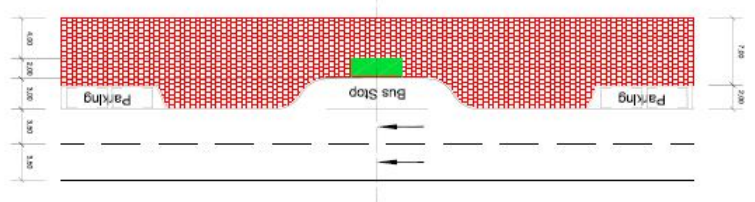
Connection between the two directions of 60" Street



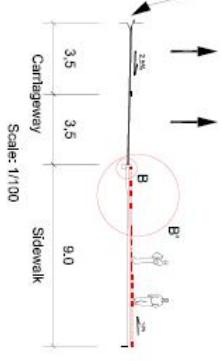




The location of places for "BUS STOP" will be decided before the beginning of construction and placed on a specific drawing

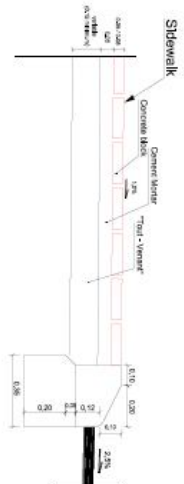


Detail B'
(for location see drainage design)
Scale: 1/20



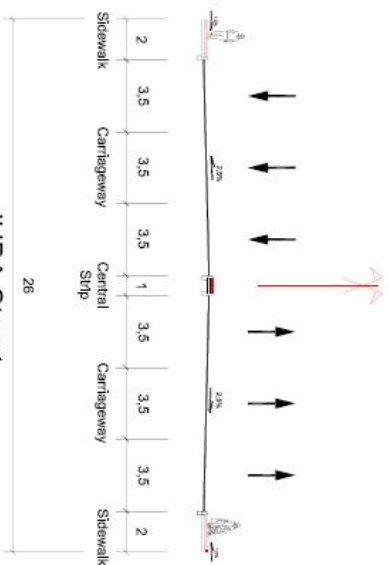
When there is no PARKING the SIDEWALK is two meters larger

Scale: 1/10

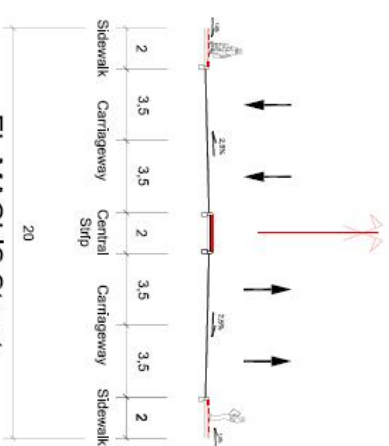


Scale: 1/10

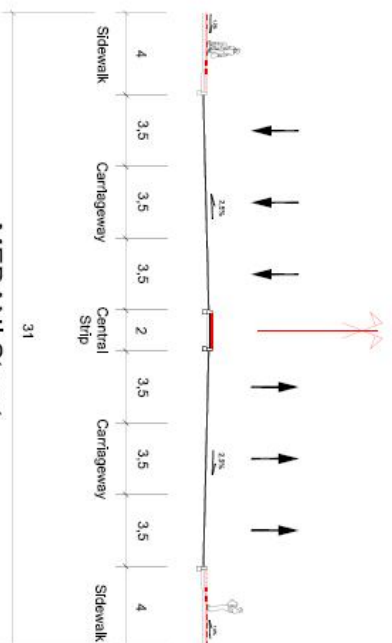




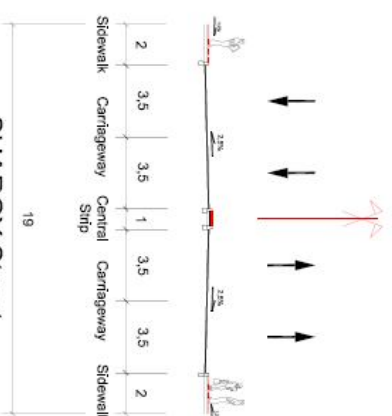
JUBA Street
and
EL FIRDOUS Street



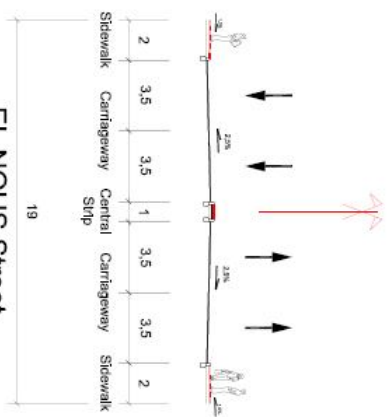
EL MAGLIS Street



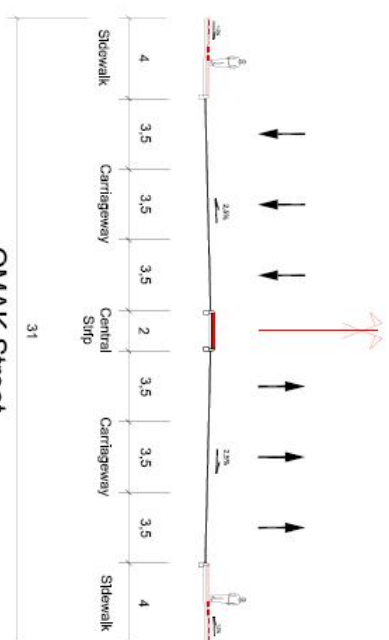
MEDANI Street



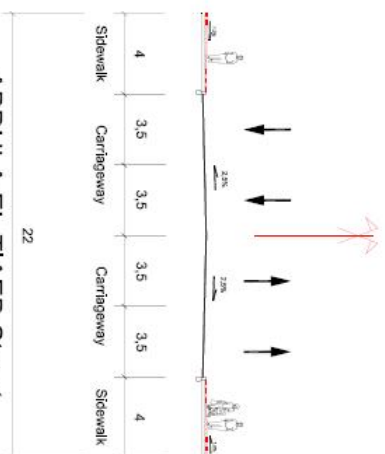
SHARGY Street



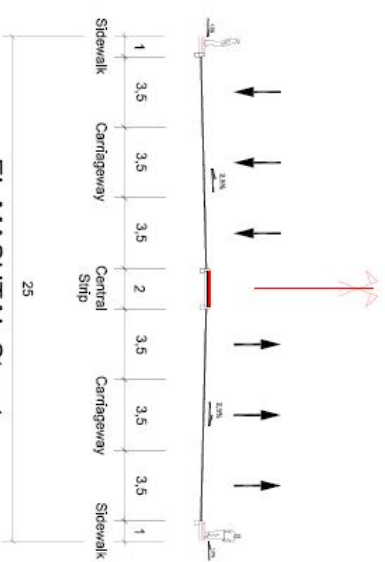
EL NOUS Street



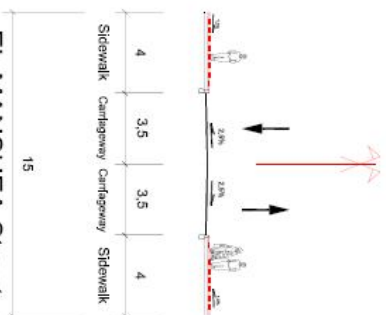
OMAK Street



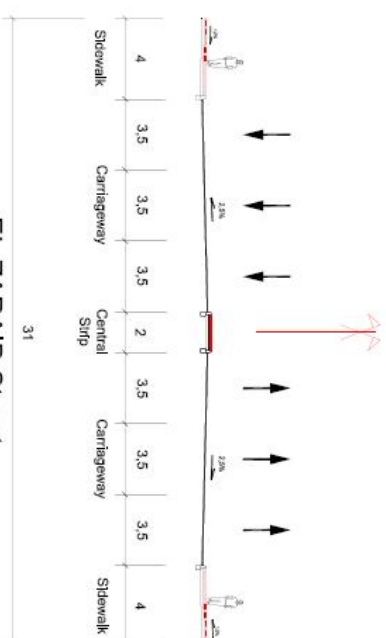
ABDULA EL TIAEB Street



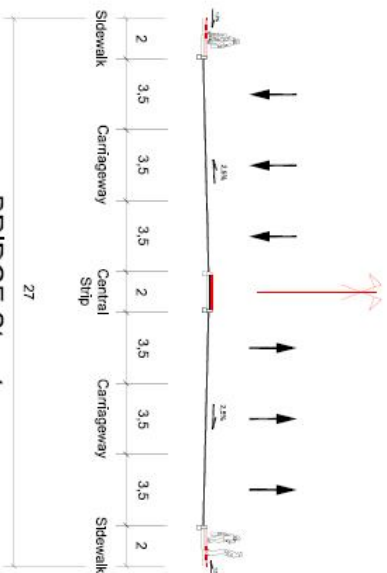
EL MASHTAL Street



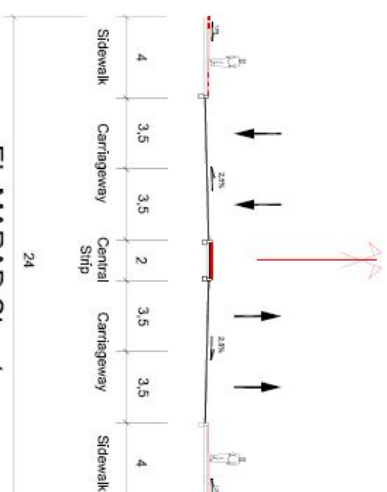
EL MANSHEA Street



EL ZARAIB Street

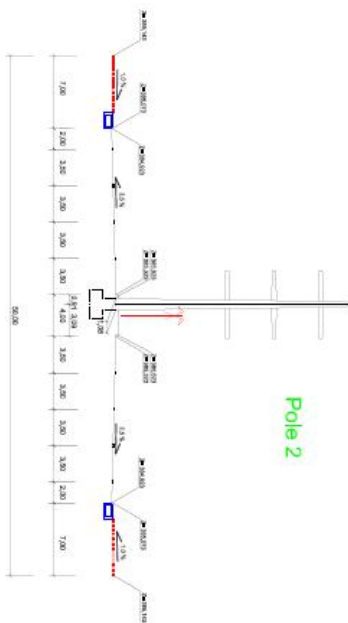


BRIDGE Street

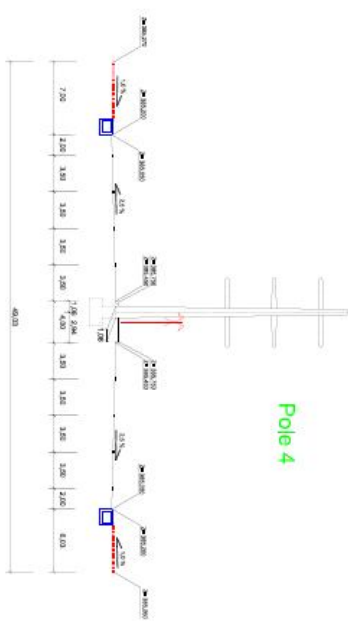


EL MARAD Street

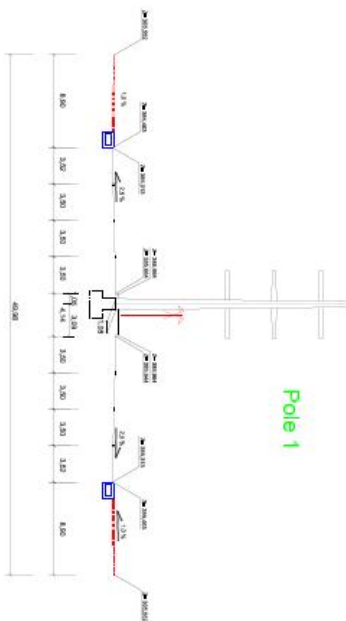
CROSS SECTION 0+317.055



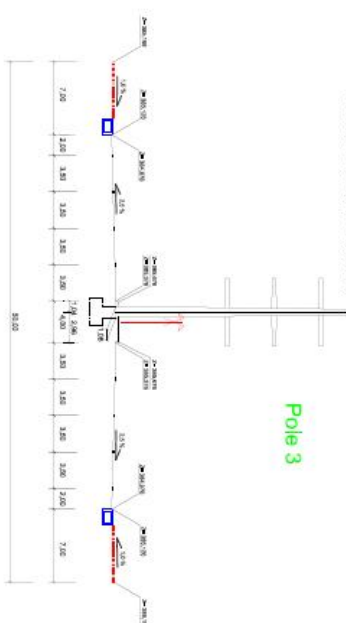
CROSS SECTION 0+824.048



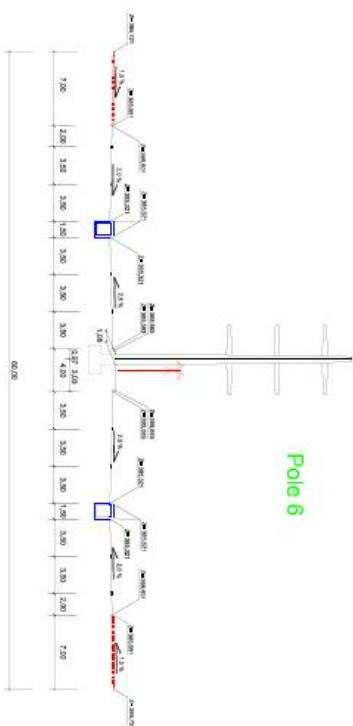
CROSS SECTION 0+059.059



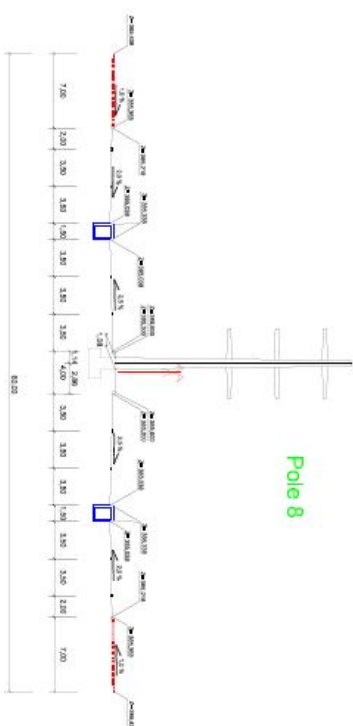
CROSS SECTION 0+568.754



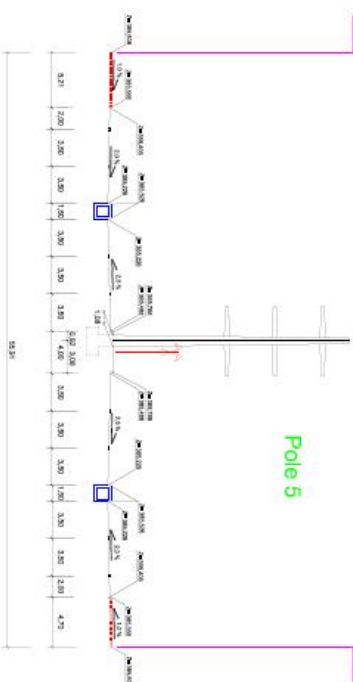
CROSS SECTION 1+330.006



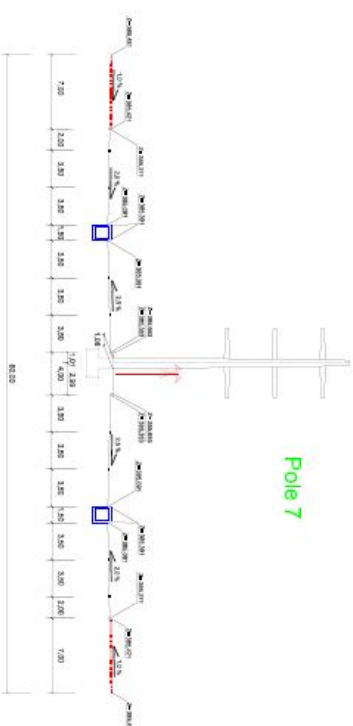
CROSS SECTION 1+635.416

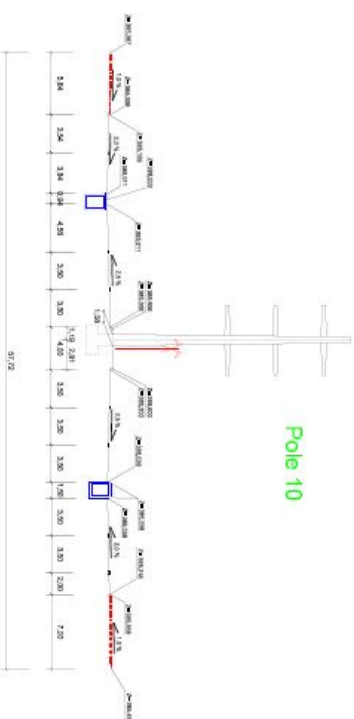
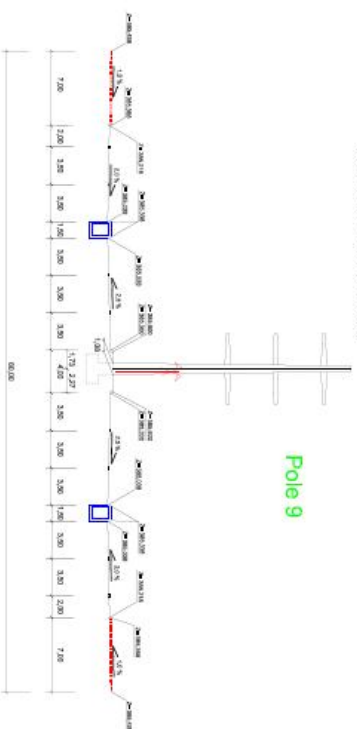
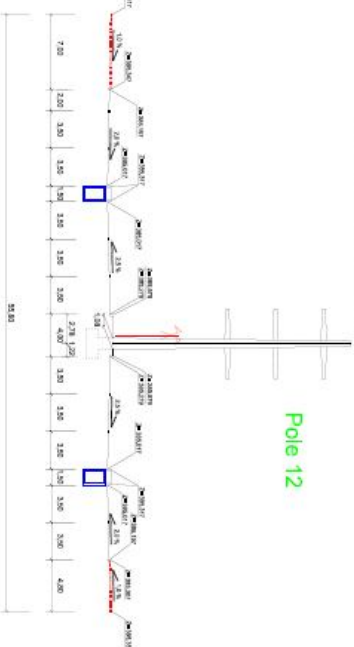
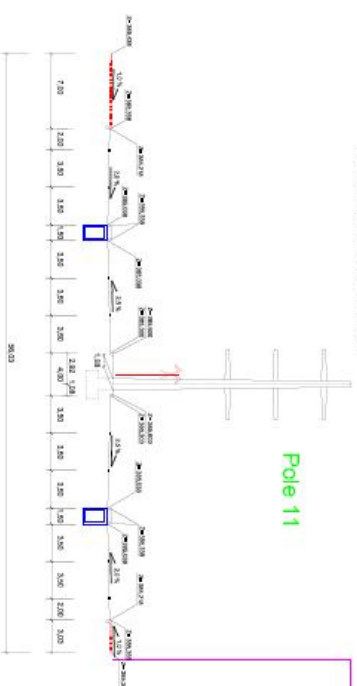


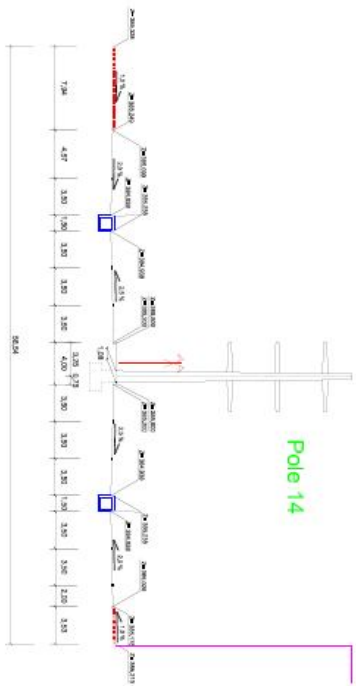
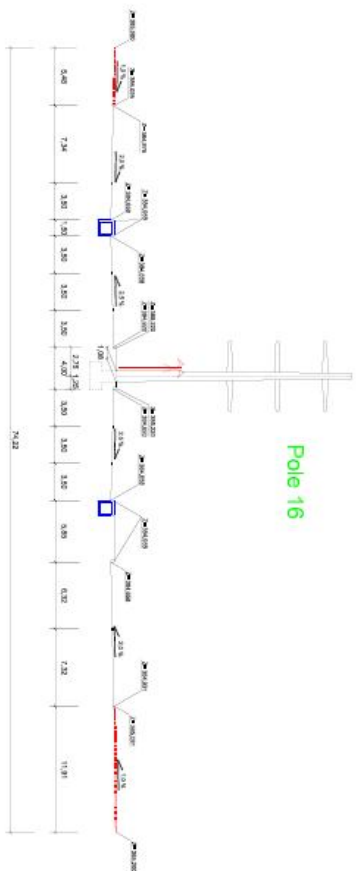
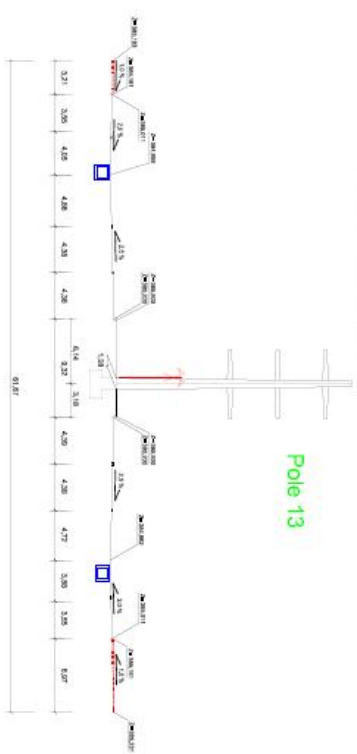
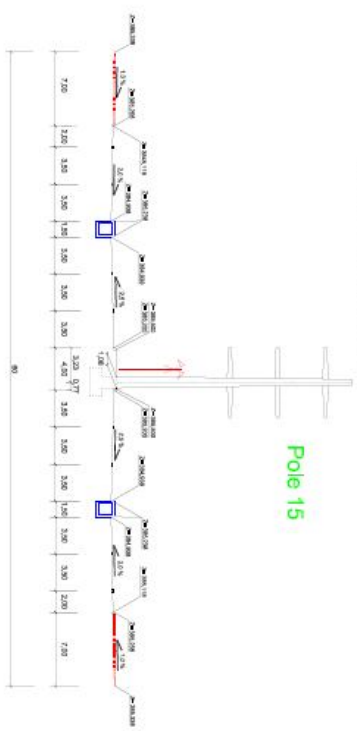
CROSS SECTION 1+075.914



CROSS SECTION 1+580.792



[illegible][illegible][illegible][illegible][illegible]

[illegible][illegible][illegible][illegible]

CROSS SECTION 4+087.279

Pole 17

