

Plate (1): Growth of *Ps. aeruginosa* on MacConkey agar

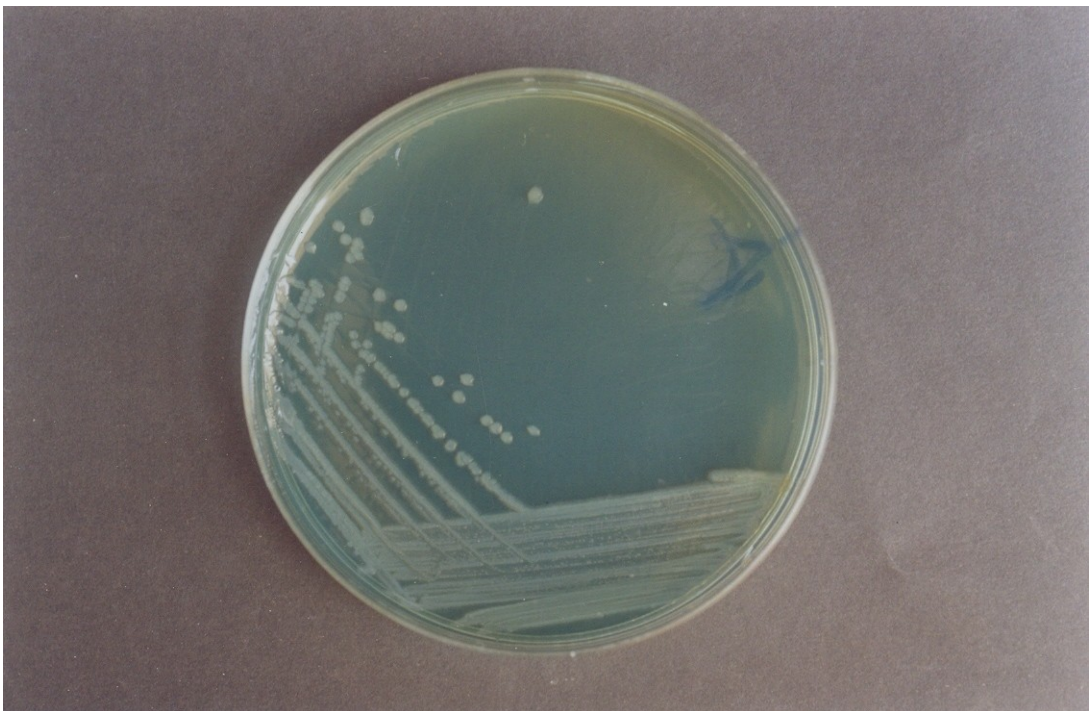


Plate (2): Growth of *Ps. aeruginosa* on CLED

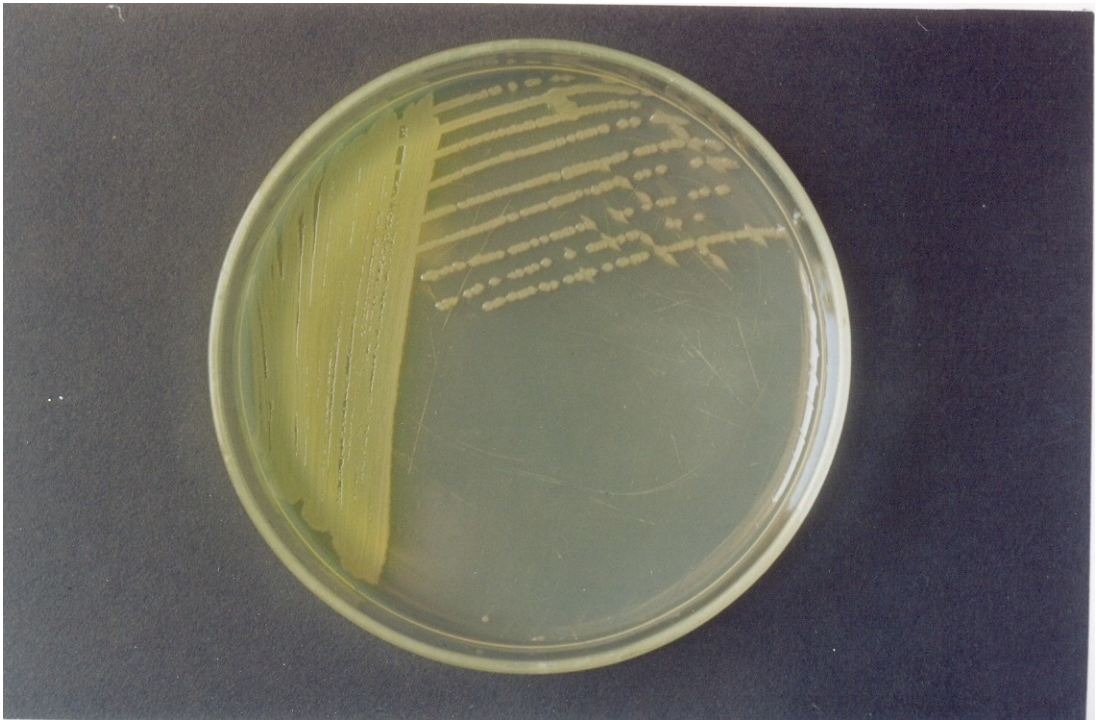


Plate (3): Growth of *Ps. aeruginosa* on nutrient agar showed green pigment

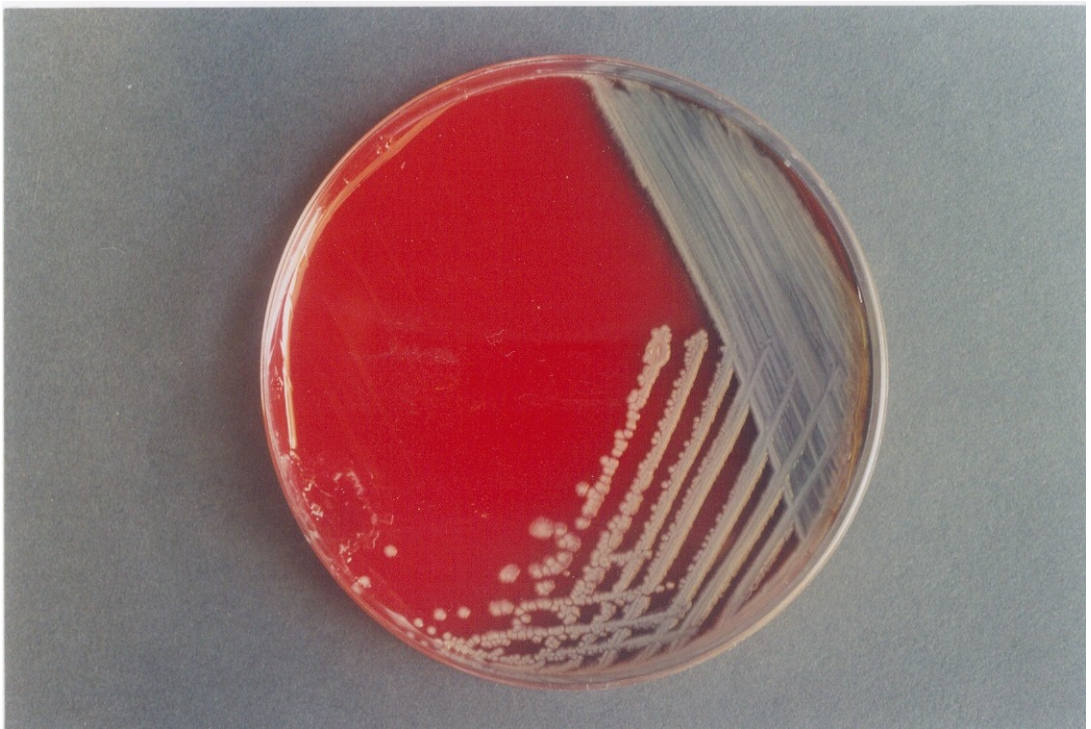


Plate (4): Growth of *Ps. aeruginosa* on blood agar

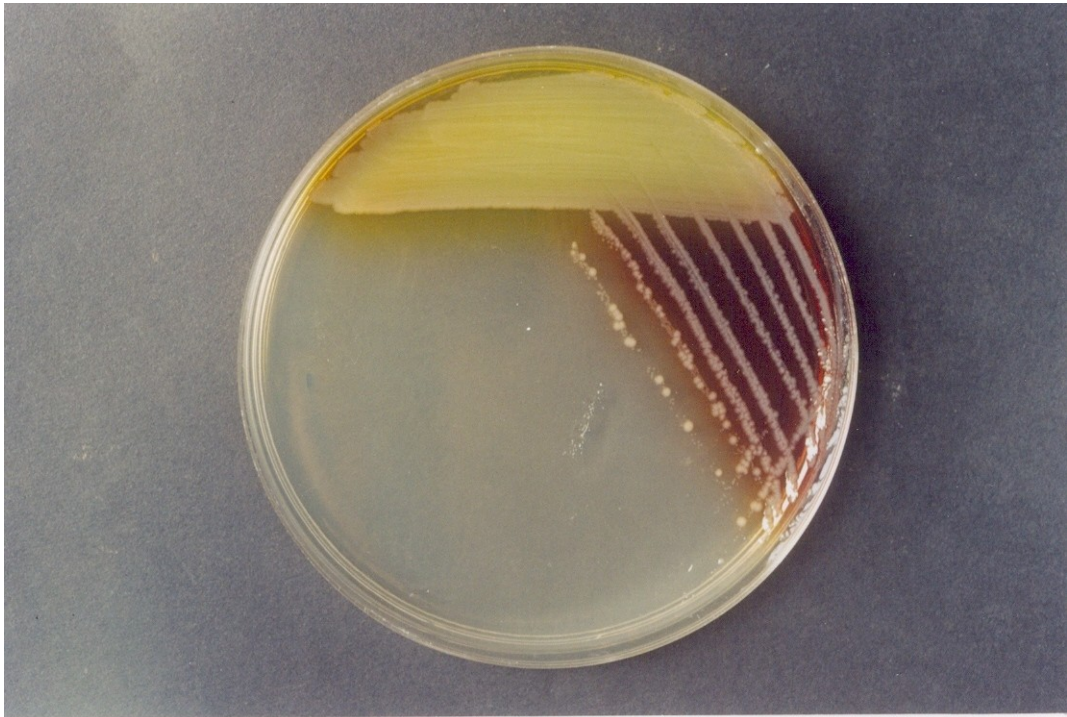


Plate (5): Growth of *Ps. aeruginosa* on nutrient agar showed yellow-red pigment



Plate (6): Growth of *Ps. aeruginosa* on nutrient agar after 48 hours the red pigment overlapped

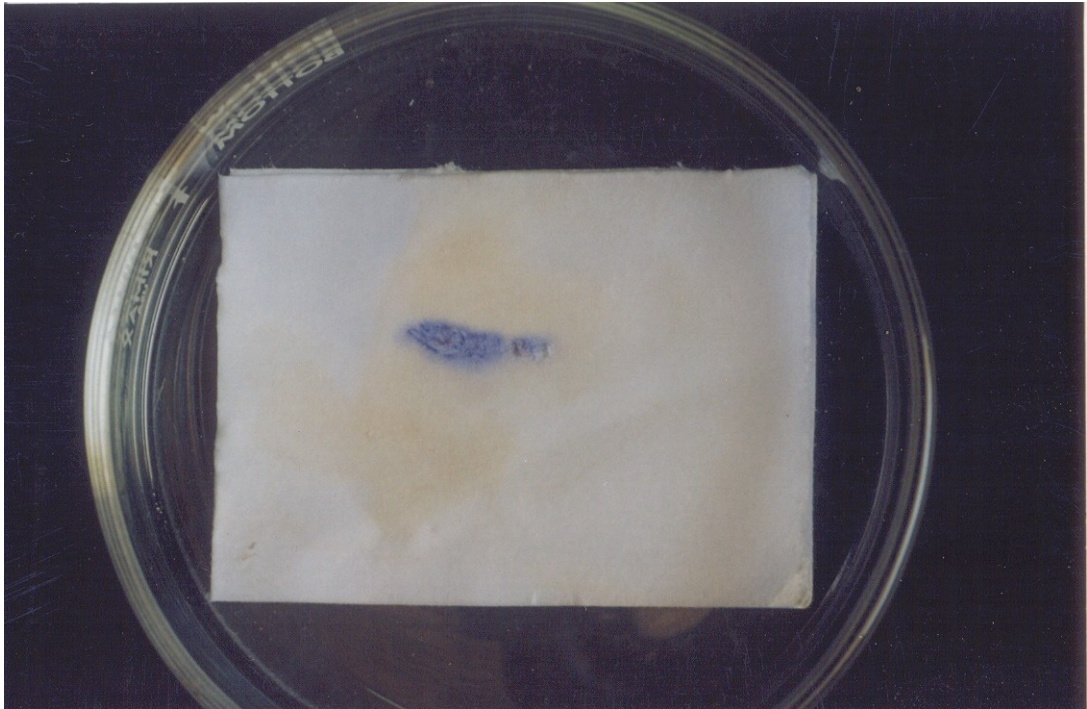


Plate (7): Positive oxidase test of *Ps. aeruginosa*



Plate (8): Citrate utilization test, left positive test of *Ps. aeruginosa*, right negative test of *E. coli*

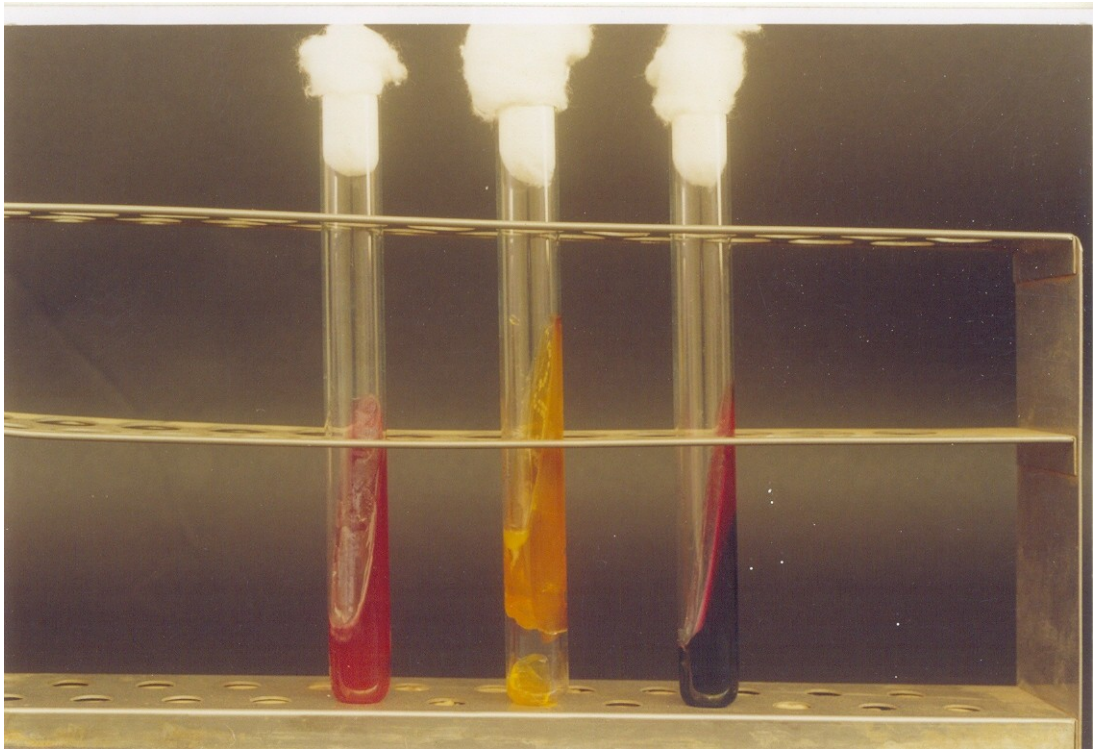


Plate (9): KIA test, left, red slope, red butt of *Ps. aeruginosa*, middle yellow slope, yellow butt of *E. coli*, right red slope, yellow butt, H₂S production of *P. mirabilis*



Plate (10): Susceptibility testing of standard strain of *Ps. aeruginosa* ATCC 27853



Plate (11): Susceptibility testing of *Ps. aeruginosa* on Mueller-Hinton agar with green yellow pigment

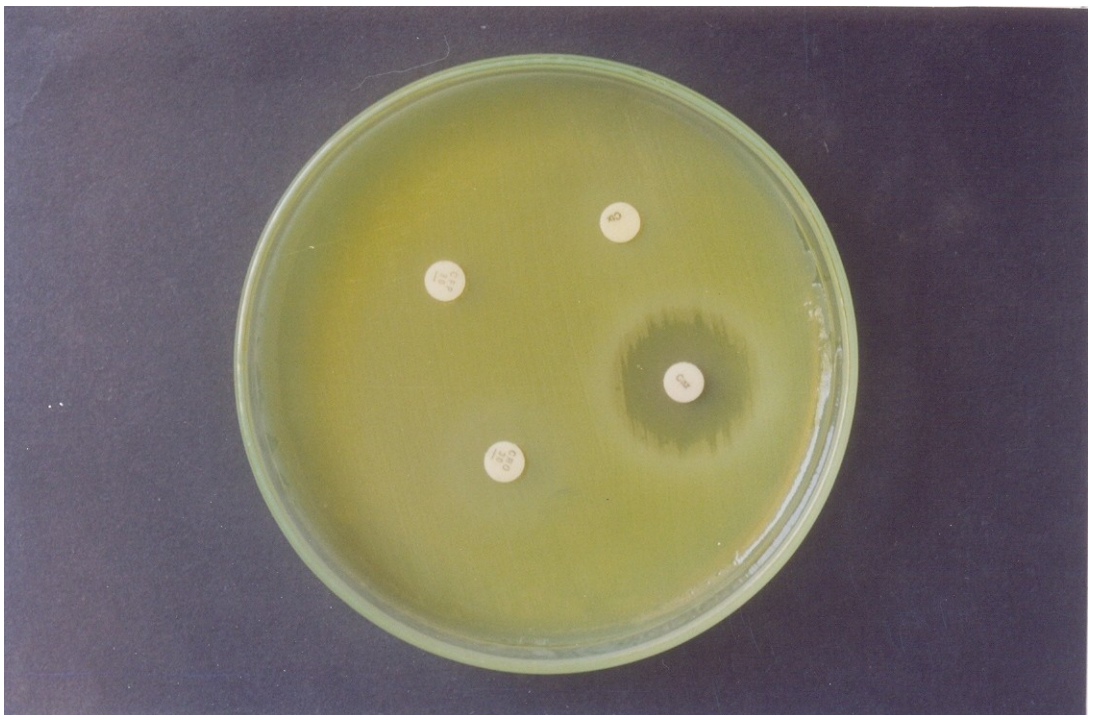


Plate (12): Susceptibility testing of *Ps. aeruginosa* showed ceftazidime sensitive



Plate (13): Susceptibility testing of *Ps. aeruginosa* showed multidrug resistance with yellow-red pigment