

## Chapter Four

### Results

#### 4. Results:

Forty blocks previously diagnosed as liver carcinoma were used in this study 20(50.0%) samples were hepatocellular carcinoma ,10(25.0%) samples were adenocarcinoma samples, and 10(25.0%) samples were metastatic adenocarcinoma (table 4.1). The patient ages ranged between 29-85 years with mean age 57 years, most of them 28(70.0%) were above 50 years and the remaining 12(30.0%) were less than 50 years (table 4.2). The patient sex revealed that 33(82.5%) patients were male and 7(17.5%) patients were female (table 4.3). Positive expression of hepar-1 among study samples was found in 19/40 samples. and negative expression was found in 21/40 samples. The relation between hepar-1 and liver carcinomas revealed that Positive expression of hepar-1- is in 15/20 of hepatocellular carcinomas samples, 2/10 of adenocarcinoma samples and in 2/10 of metastatic carcinomas samples, negative expression of hepar-1 among study population was 21/40 samples, negative expression of hepar-1 was seen in adenocarcinoma 8/10 samples, metastatic carcinomas 8/10 samples and hepatocellular carcinomas 5/20 samples with significant correlation between hepar-1 and liver carcinomas types (P. value 0.002),(table 4.5).

**Table (4.1): Distribution of histopathological diagnosis of liver lesions among study samples:**

<b>Histopathological diagnosis</b>	<b>Frequency</b>	<b>Percent</b>
Hepatocellular carcinoma	20	50%
Adenocarcinoma	10	25%
Metastatic adenocarcinoma	10	25%
Total	40	100%

**Table (4.2): Distribution of age groups among study population:**

<b>Age group(years)</b>	<b>Frequency</b>	<b>Percent</b>
Less or equal 50	11	27.5%
More than 50	29	72.5%
Total	40	100%

**Table (4.3): Distribution of sex among study population:**

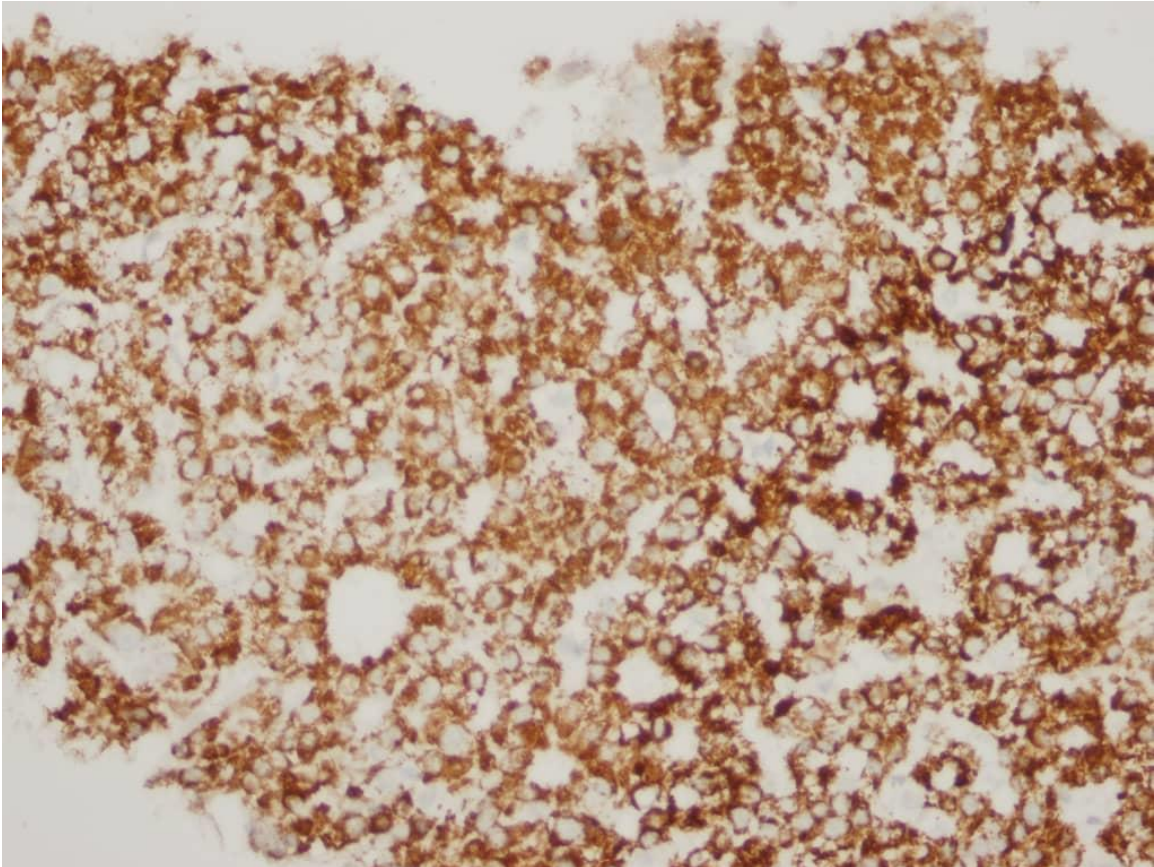
<b>Sex</b>	<b>Frequency</b>	<b>Percent</b>
Male	33	82.5%
Female	7	17.5%
Total	40	100%

**Table (4.4):Expression of hepar-1 among study samples:**

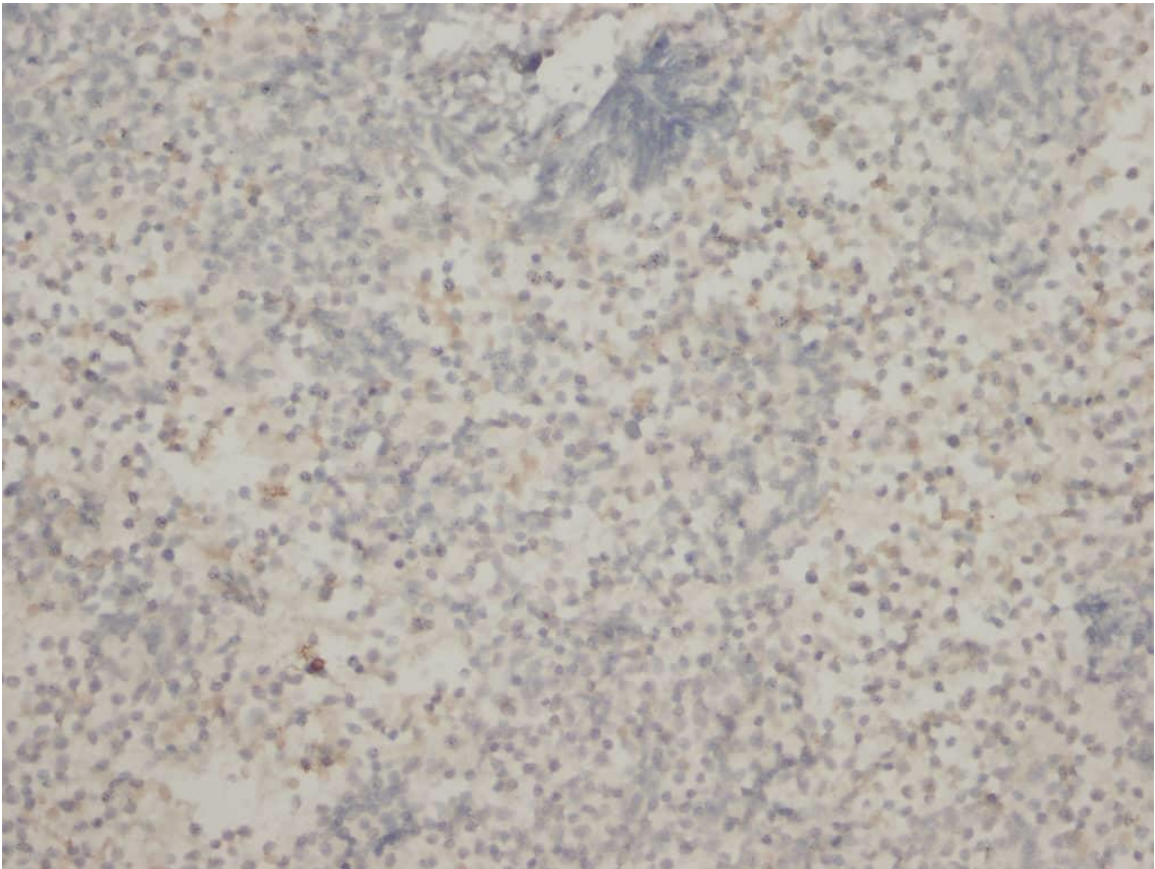
<b>Expression</b>	<b>Frequency</b>	<b>Percent</b>
Positive	19	47.5%
Negative	21	52.5%
Total	40	100%

**Table (4.5): Relation between hepar-1 expression and histopathological diagnosis of liver lesions :**

<b>Expression of Hepar-1</b>	<b>Histopathological diagnosis</b>			<b>Total</b>	<b>P. value</b>
	<b>Hepatocellular carcinoma N(%)</b>	<b>Adenocarcinoma N (%)</b>	<b>Metastatic carcinoma N (%)</b>		
Positive	15(37.5%)	2(5.0%)	2(5.0%)	19(47.5%)	0.002
Negative	5(12.5%)	8(20.0%)	8(20.0%)	21(52.5%)	
Total	20(50.0%)	10(25.0%)	10(25.0%)	40(100%)	



**Photograph (4.1): hepatocellular carcinoma shows positive nuclear expression of hepar-1 (40x).**



**Photograph (4.2): hepatocellular carcinoma shows negative nuclear expression of hepar-1 (40x).**