

# Appendix

## MODEL CONFIGURATION

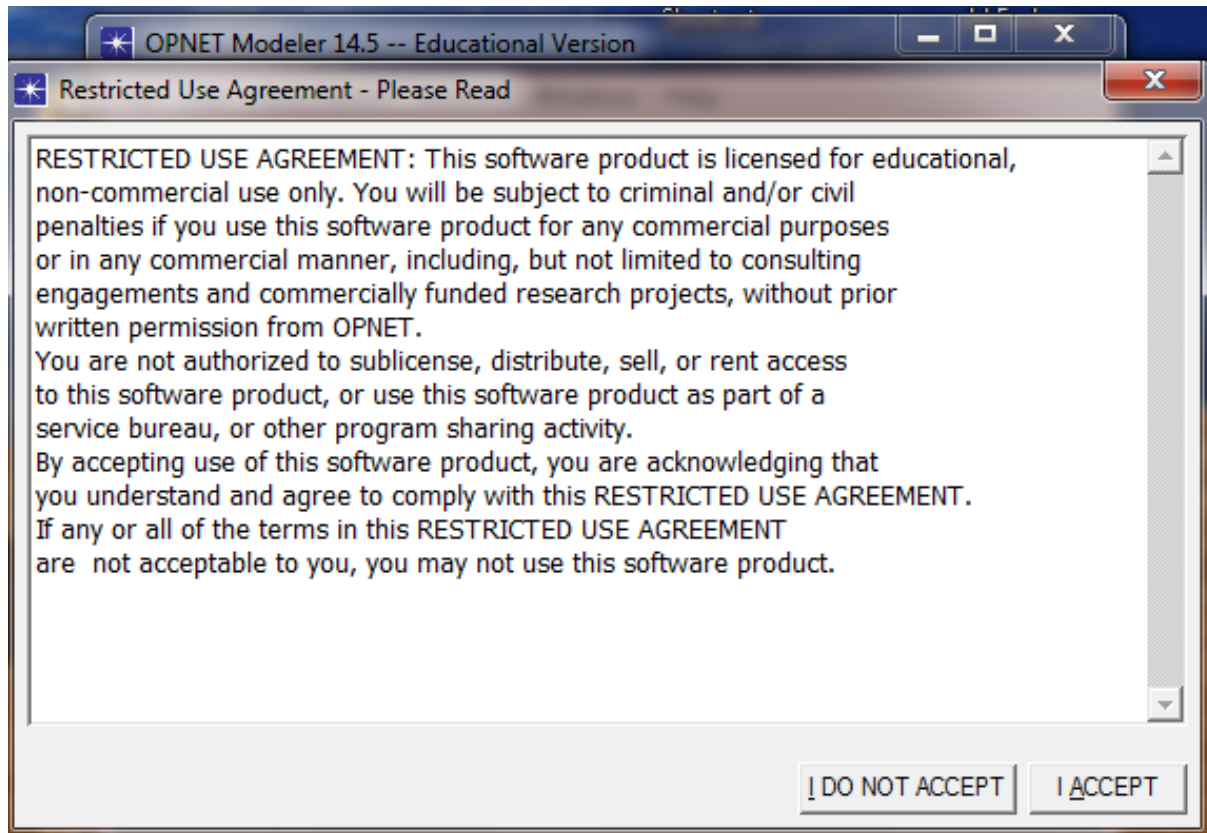


Figure A.1: Latch the OPNET 14.5.

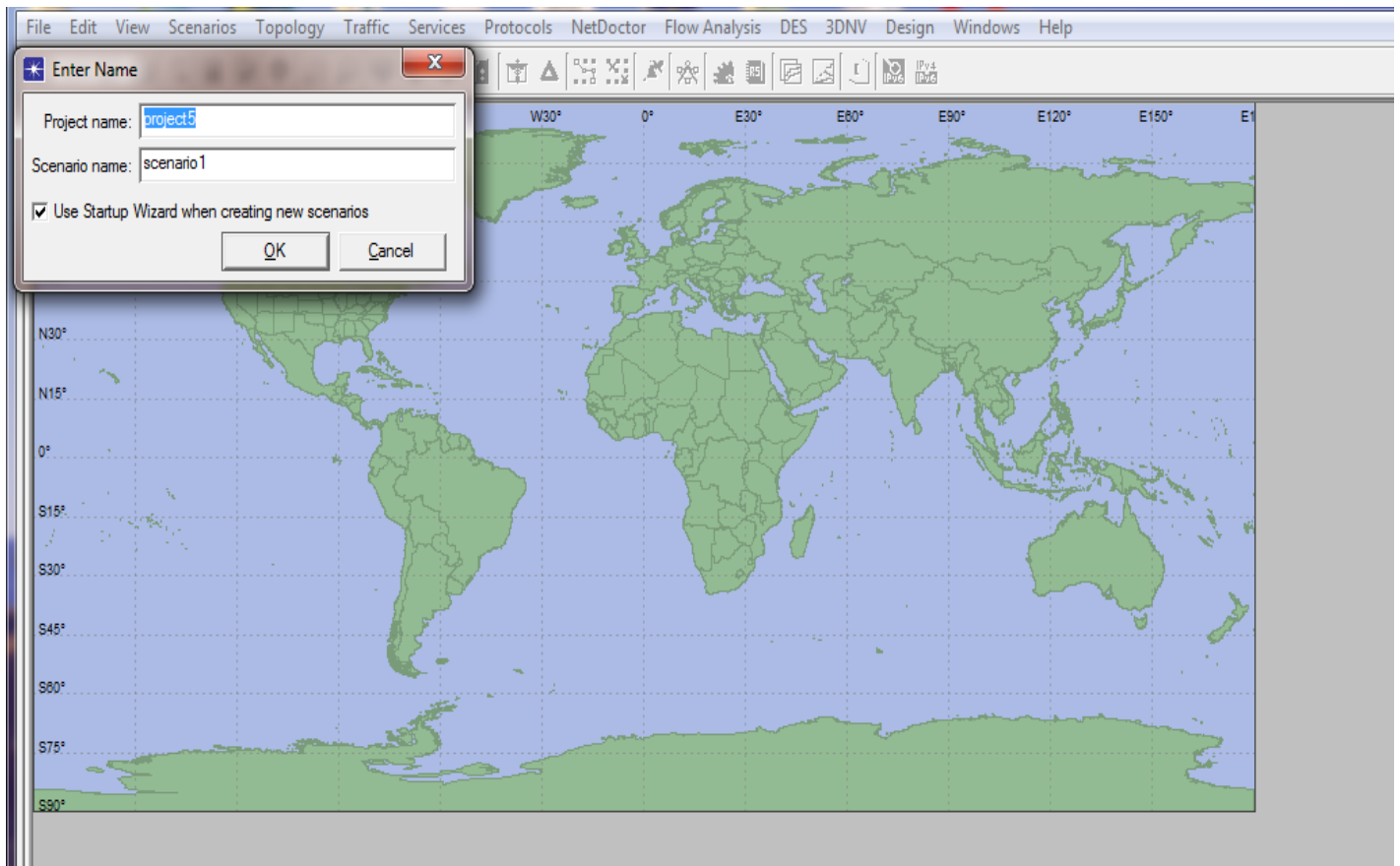


Figure A.2: Create new project.

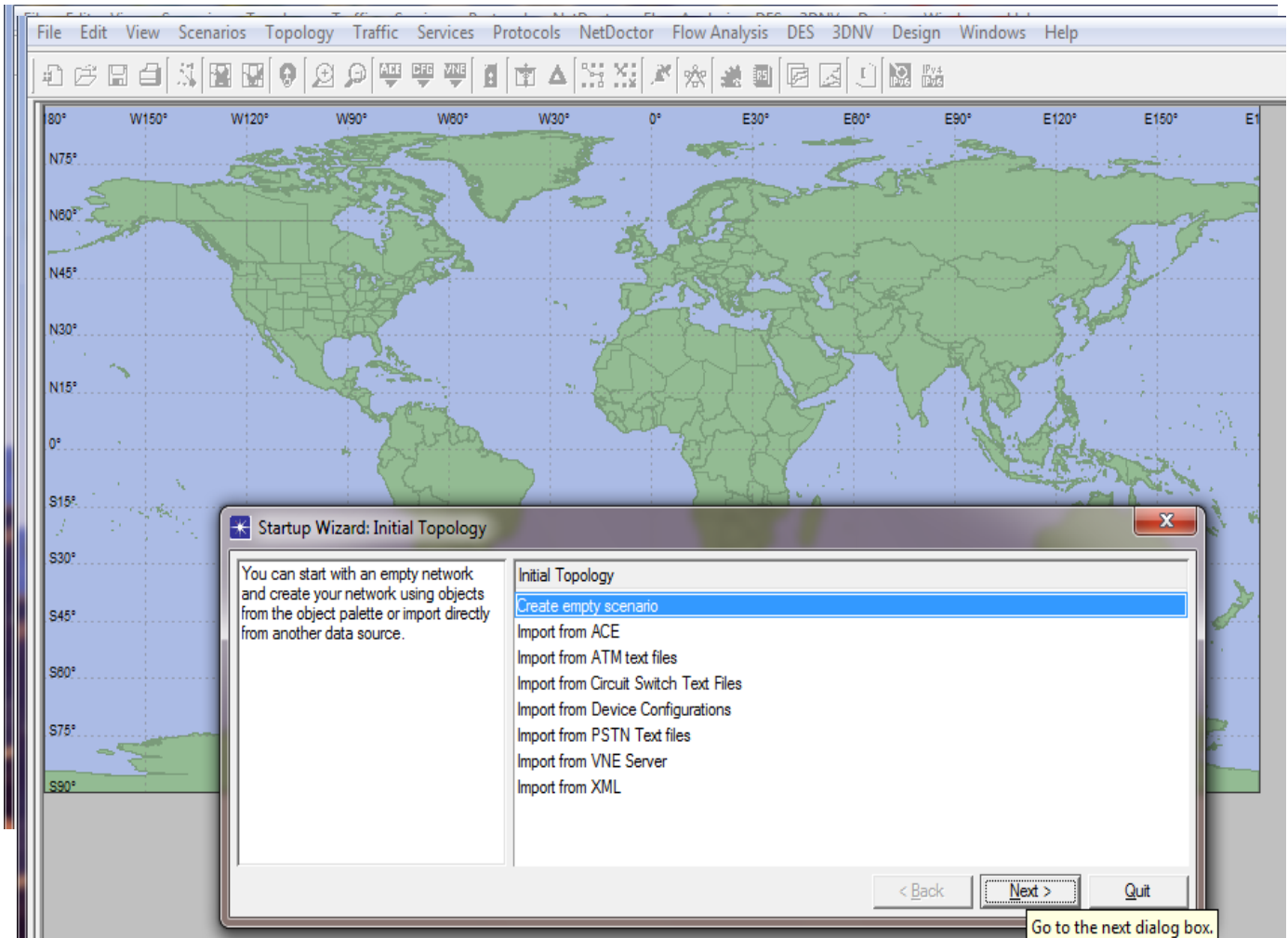


Figure A.3: Create empty scenario.

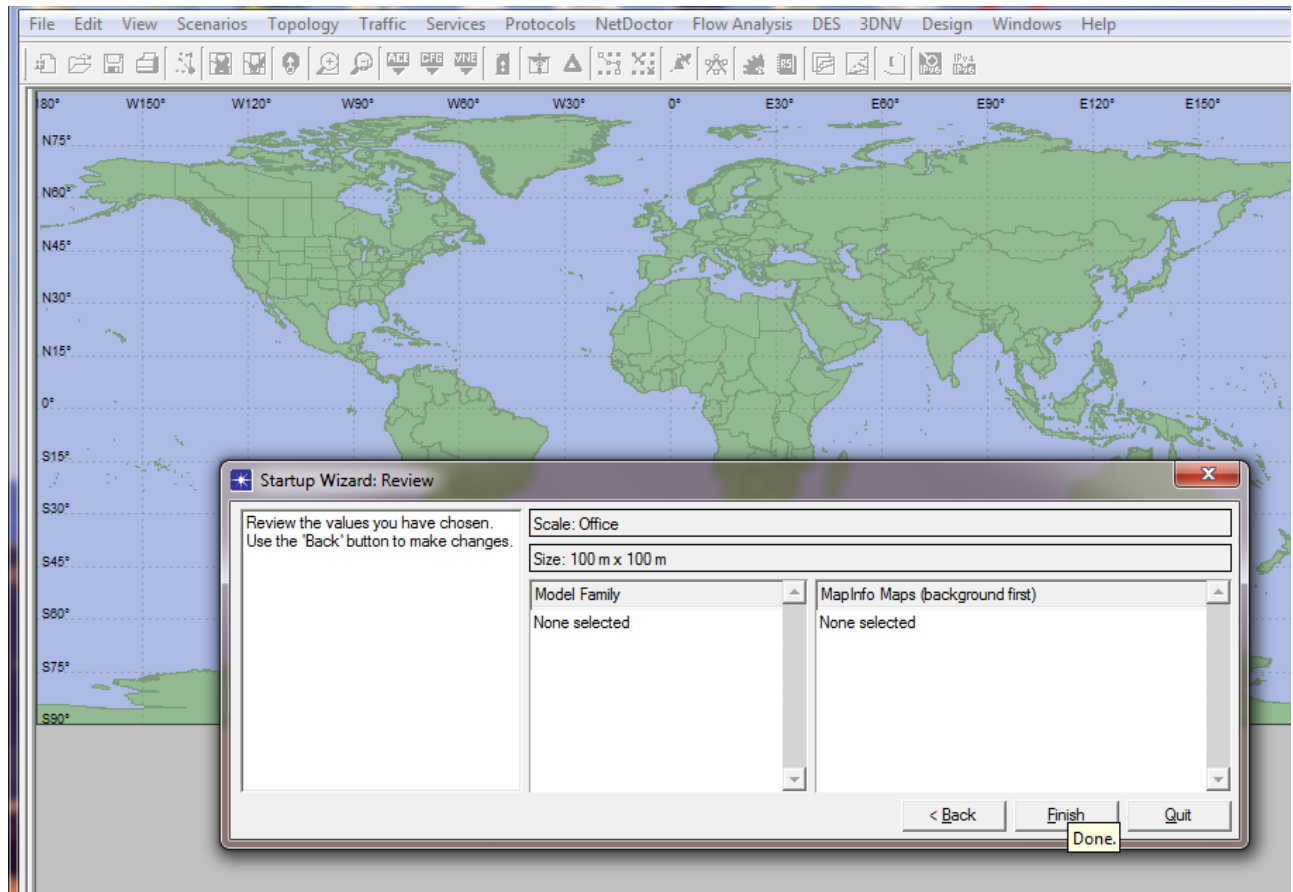


Figure A.4: Select a Model Family as ZigBee.

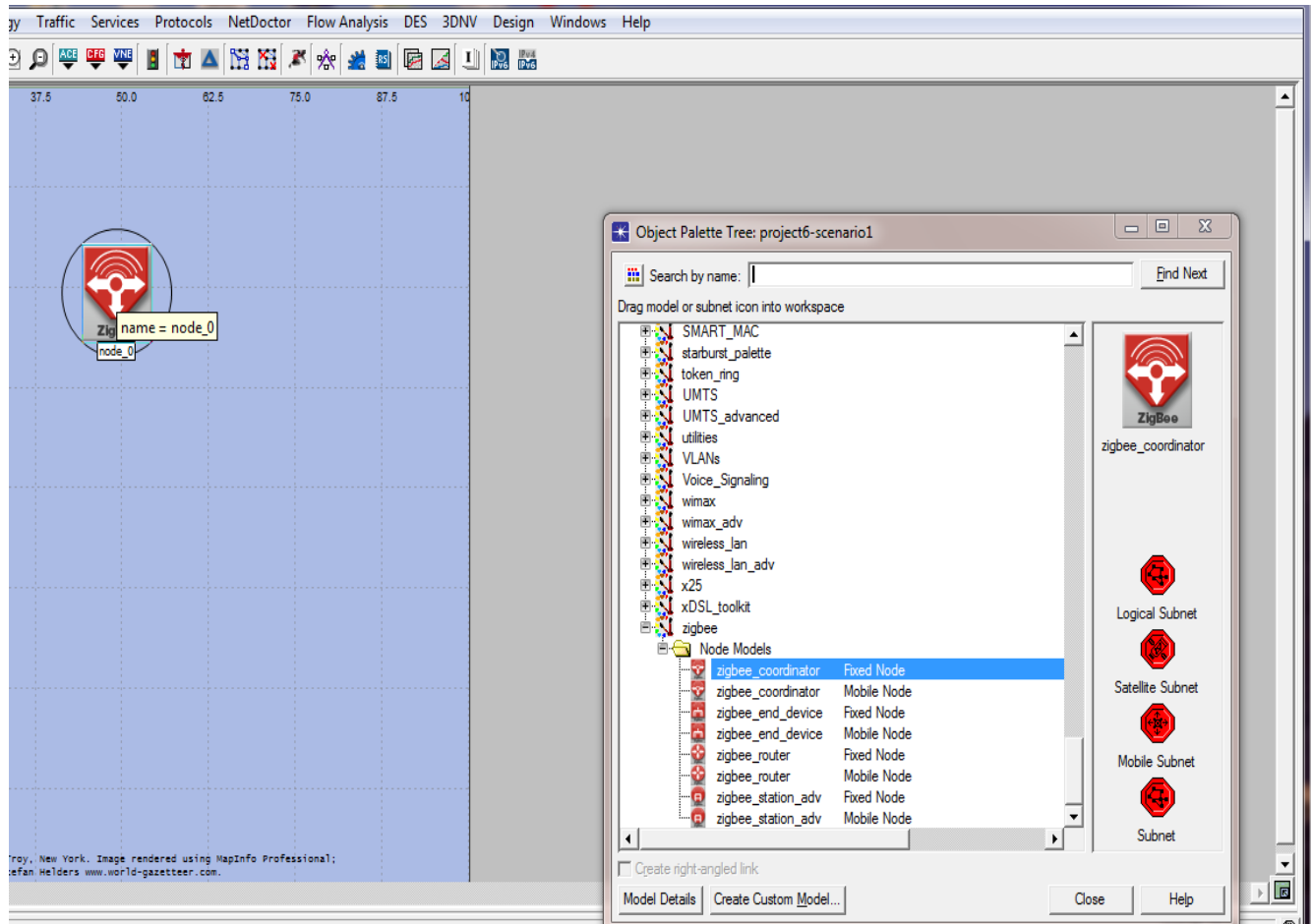


Figure A.5: Select a Node model in ZigBee component.

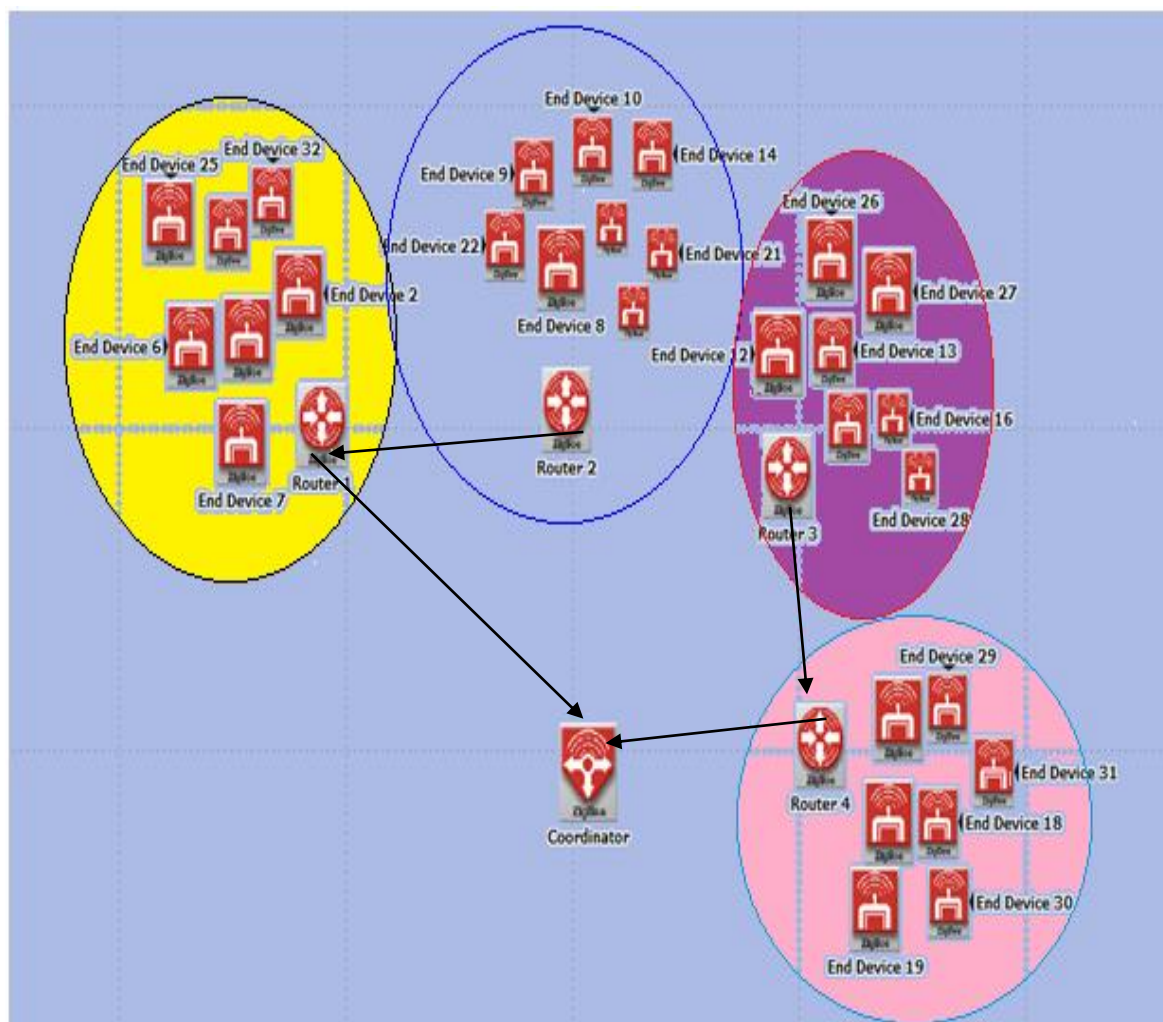


Figure A.6: Net work topology for Teen protocol

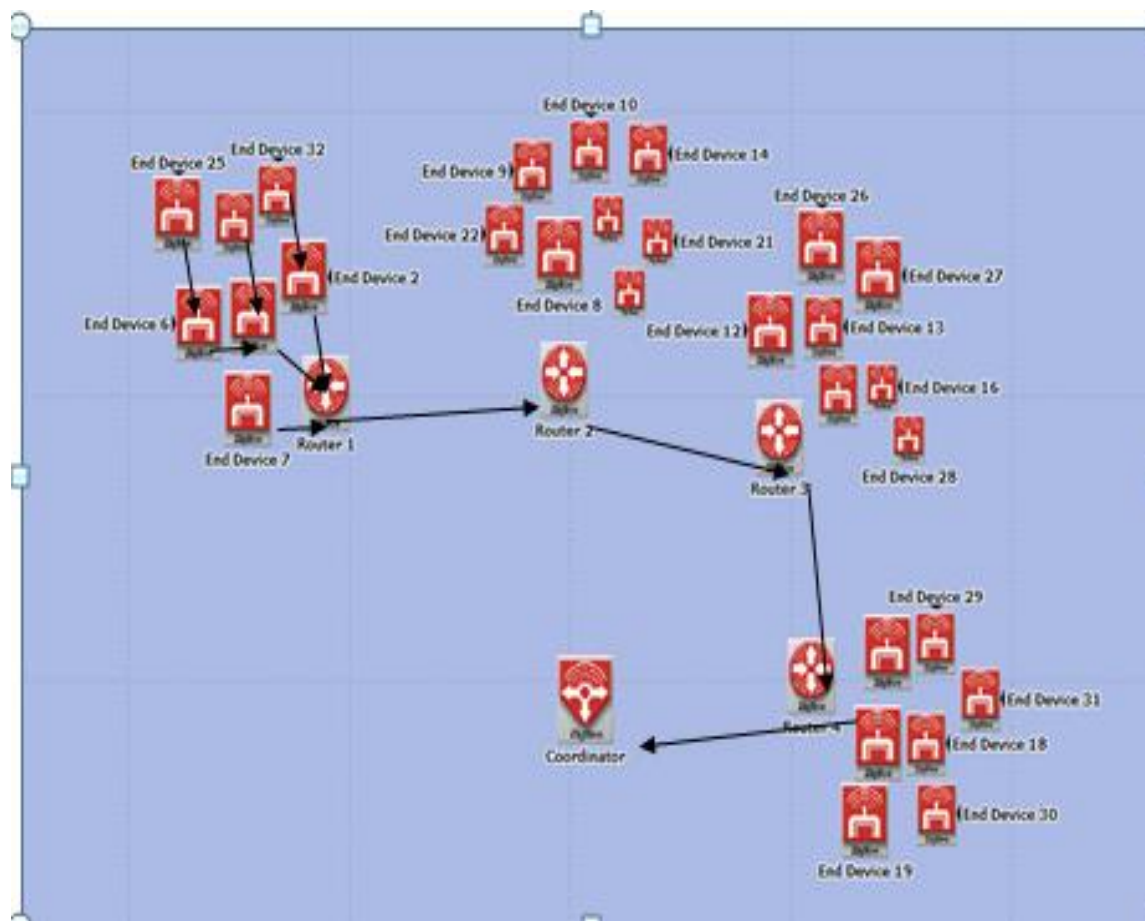


Figure A.7: Net work topology for PEGASIS protocol

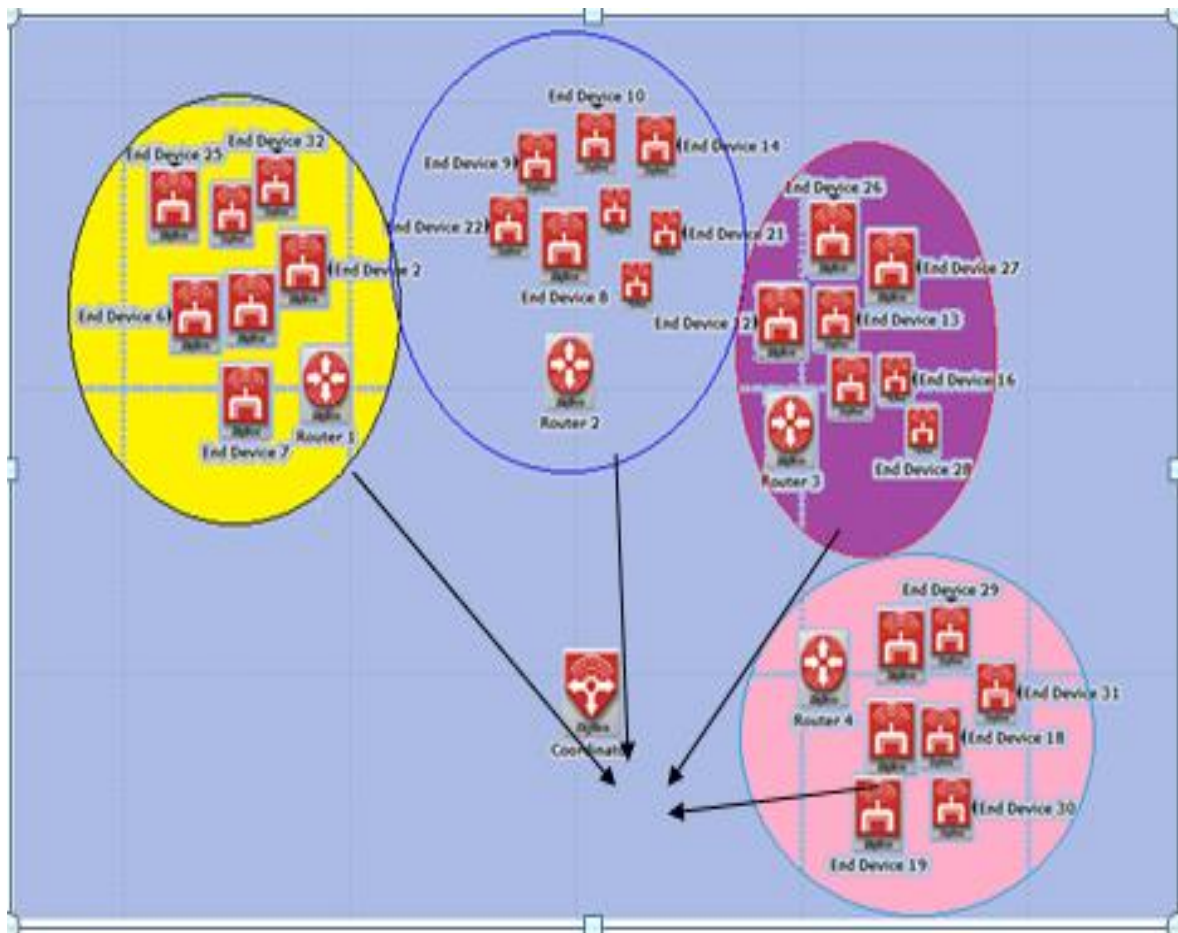


Figure A.8: Net work topology for LEACH protocol