

Un Of KH
GCMS-QP2010Plus
Sample Scan by GC-MS EI

Sample Information

Analyzed : 3/30/2015 12:40:50 PM
Sample Type : Unknown
Sample Name : Red
Data File : C:\GCMSsolution\Susan_mar\Susan_100T.QGD
Method File : C:\GCMSsolution\Susan_mar\volatile.qgm
Report File :
Tuning File : C:\GCMSsolution\System\Tune1\30_mar 2015.qgt
Admin :

Method

[Comment]

==== Analytical Line 1 =====

[GC-2010]

Column Oven Temp. :40.0 °C
Injection Temp. :250.00 °C
Injection Mode :Split
Flow Control Mode :Pressure
Pressure :100.0 kPa
Total Flow :93.8 mL/min
Column Flow :1.78 mL/min
Linear Velocity :48.1 cm/sec
Purge Flow :3.0 mL/min
Split Ratio :50.0
High Pressure Injection :OFF
Carrier Gas Saver :OFF
Splitter Hold :OFF
Oven Temp. Program

Rate	Temperature(°C)	Hold Time(min)
-	40.0	0.00
5.00	275.0	11.00

< Ready Check Heat Unit >

Column Oven : Yes
SPL1 : Yes
MS : Yes

< Ready Check Detector(FTD) >

< Ready Check Baseline Drift >

< Ready Check Injection Flow >

SPL1 Carrier : Yes
SPL1 Purge : Yes

< Ready Check APC Flow >

< Ready Check Detector APC Flow >

External Wait :No
Equilibrium Time :3.0 min

[GCMS-QP2010 Plus]

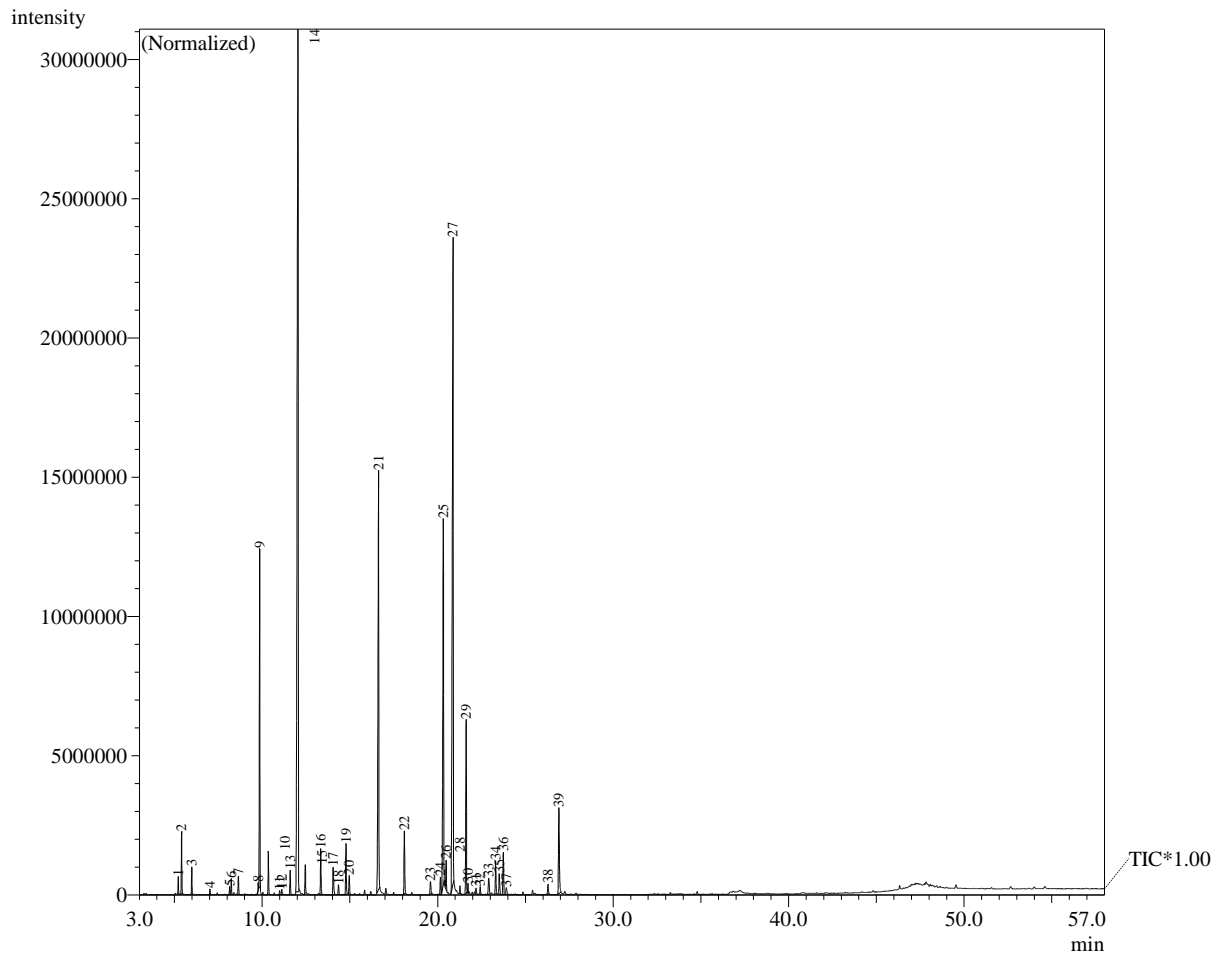
IonSourceTemp :200.00 °C
Interface Temp. :250.00 °C
Solvent Cut Time :2.50 min
Detector Gain Mode :Relative
Detector Gain :0.00 kV
Threshold :1000

[MS Table]

--Group 1 - Event 1--

Start Time :3.00min
End Time :58.00min
ACQ Mode :Scan
Event Time :0.50sec
Scan Speed :666
Start m/z :40.00
End m/z :350.00

Sample Inlet Unit :GC



Peak Report TIC

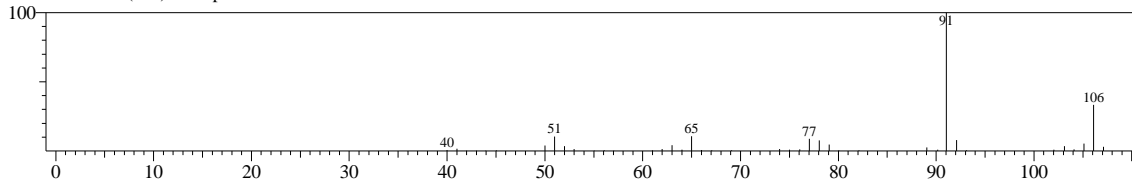
Peak#	R.Time	I.Time	F.Time	Area	Area%	Height	Height%
1	5.218	5.175	5.267	1320320	0.30	632961	0.49
2	5.407	5.358	5.458	5048219	1.15	2238577	1.73
3	5.987	5.950	6.033	2110206	0.48	968844	0.75
4	7.020	6.983	7.050	444288	0.10	202833	0.16
5	8.149	8.100	8.192	649820	0.15	301397	0.23
6	8.237	8.192	8.292	1307703	0.30	571290	0.44
7	8.644	8.600	8.700	1485317	0.34	653604	0.51
8	9.775	9.725	9.800	683350	0.16	311014	0.24
9	9.854	9.808	9.900	28822195	6.55	12174549	9.43
10	10.353	10.300	10.417	3691639	0.84	1549984	1.20
11	10.991	10.950	11.033	352144	0.08	149293	0.12
12	11.118	11.075	11.183	532327	0.12	194708	0.15
13	11.596	11.550	11.675	2271499	0.52	870938	0.67
14	12.039	11.917	12.092	132432245	30.10	30965338	23.97
15	12.454	12.417	12.525	2480289	0.56	1017591	0.79
16	13.337	13.283	13.417	4448586	1.01	1653941	1.28
17	14.045	13.992	14.125	3324340	0.76	985243	0.76
18	14.350	14.300	14.408	931194	0.21	349330	0.27
19	14.774	14.717	14.867	5055211	1.15	1830901	1.42
20	14.958	14.900	15.025	1843926	0.42	676743	0.52
21	16.630	16.517	16.700	49926003	11.35	15046860	11.65
22	18.104	18.025	18.175	6482668	1.47	2262457	1.75
23	19.588	19.525	19.667	1521991	0.35	445780	0.35
24	20.156	20.100	20.208	1528278	0.35	626286	0.48
25	20.323	20.225	20.375	44034889	10.01	13132444	10.17
26	20.480	20.425	20.525	2603274	0.59	1056080	0.82

Peak#	R.Time	I.Time	F.Time	Area	Area%	Height	Height%
27	20.874	20.750	20.925	90454984	20.56	23233591	17.99
28	21.272	21.217	21.317	724688	0.16	272596	0.21
29	21.622	21.550	21.692	16344779	3.72	6258387	4.85
30	21.726	21.692	21.767	804966	0.18	351096	0.27
31	22.185	22.133	22.250	643899	0.15	219213	0.17
32	22.423	22.375	22.483	700000	0.16	269622	0.21
33	22.907	22.833	23.000	2333452	0.53	580034	0.45
34	23.304	23.242	23.375	3431652	0.78	1173975	0.91
35	23.511	23.433	23.583	2392284	0.54	739397	0.57
36	23.740	23.675	23.808	4336408	0.99	1516027	1.17
37	23.912	23.858	24.000	935172	0.21	244805	0.19
38	26.286	26.225	26.358	1122287	0.26	362261	0.28
39	26.910	26.842	27.033	10348476	2.35	3072542	2.38
				439904968	100.00	129162532	100.00

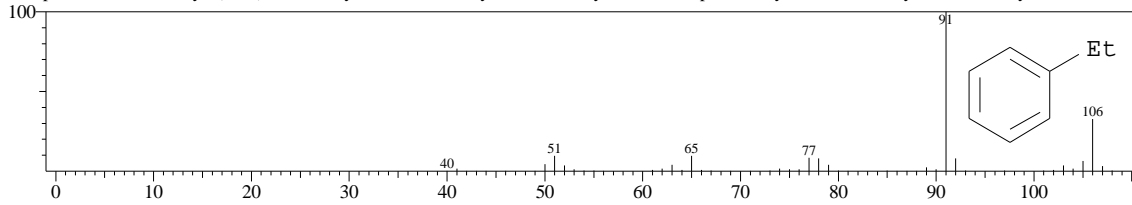
Library

<< Target >>

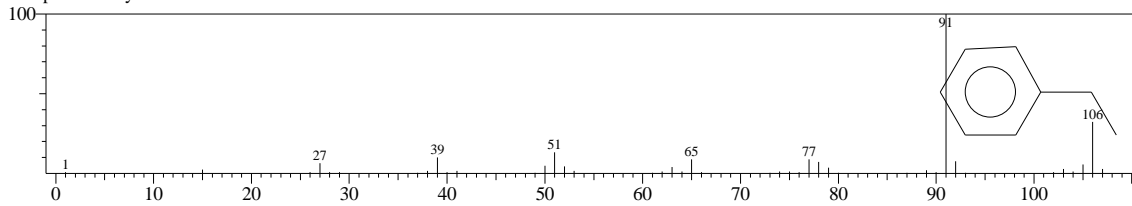
Line#:1 R.Time:5.217(Scan#:267) MassPeaks:40
RawMode:Single 5.217(267) BasePeak:91.05(285260)
BG Mode:5.283(275) Group 1 - Event 1



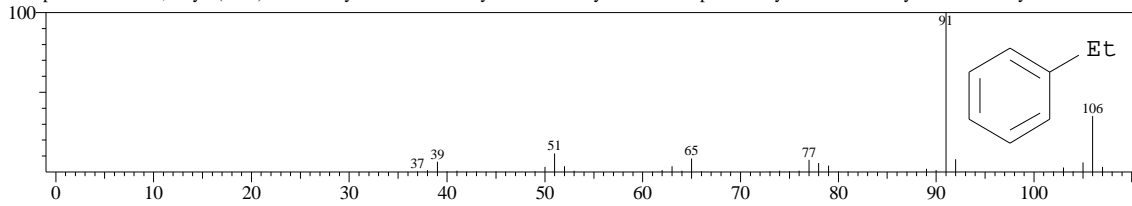
Hit#:1 Entry:8883 Library:WILEY7.LIB
SI:98 Formula:C8 H10 CAS:100-41-4 MolWeight:106 RetIndex:0
CompName:Benzene, ethyl- (CAS) EB \$\$ Ethylbenzene \$\$ Phenylethane \$\$ Ethylbenzol \$\$.alpha.-Methyltoluene \$\$ Aethylbenzol \$\$ Ethylbenzeen \$\$ Etil



Hit#:2 Entry:2338 Library:NIST27.LIB
SI:98 Formula:C8H10 CAS:100-41-4 MolWeight:106 RetIndex:0
CompName:Ethylbenzene

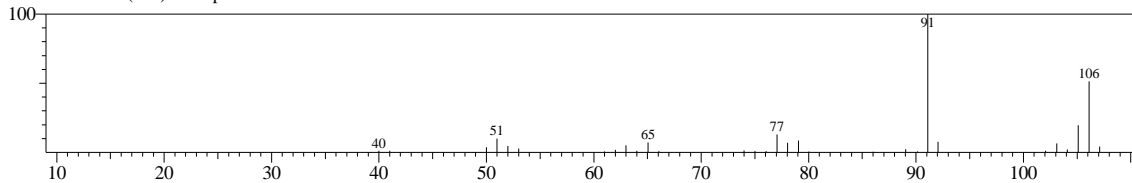


Hit#:3 Entry:8880 Library:WILEY7.LIB
SI:97 Formula:C8 H10 CAS:100-41-4 MolWeight:106 RetIndex:0
CompName:Benzene, ethyl- (CAS) EB \$\$ Ethylbenzene \$\$ Phenylethane \$\$ Ethylbenzol \$\$.alpha.-Methyltoluene \$\$ Aethylbenzol \$\$ Ethylbenzeen \$\$ Etil

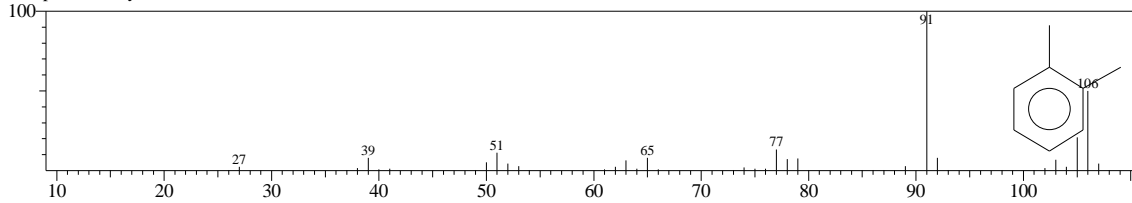


<< Target >>

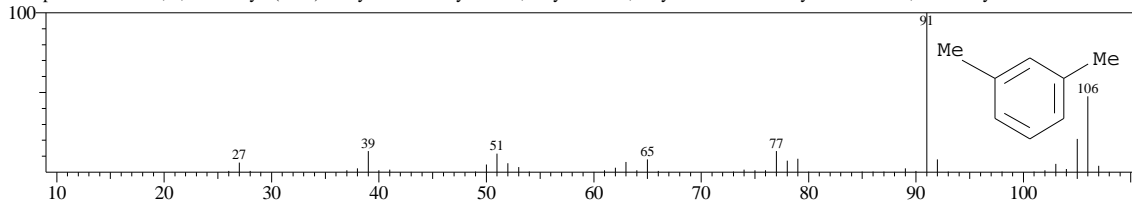
Line#:2 R.Time:5.408(Scan#:290) MassPeaks:46
RawMode:Single 5.408(290) BasePeak:91.10(834510)
BG Mode:5.517(303) Group 1 - Event 1



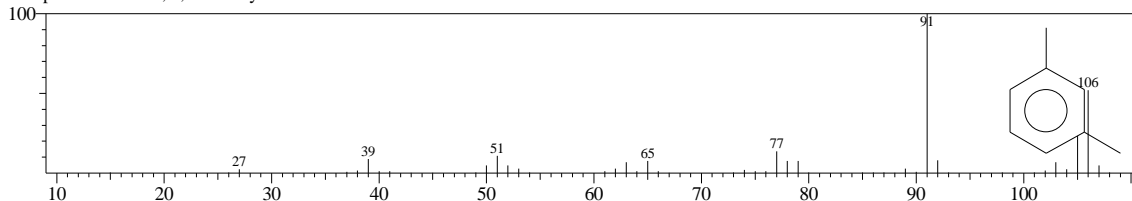
Hit#:1 Entry:2357 Library:NIST27.LIB
SI:99 Formula:C8H10 CAS:95-47-6 MolWeight:106 RetIndex:0
CompName:o-Xylene



Hit#:2 Entry:8902 Library:WILEY7.LIB
SI:98 Formula:C8 H10 CAS:108-38-3 MolWeight:106 RetIndex:0
CompName:Benzene, 1,3-dimethyl- (CAS) m-Xylene \$\$ m-Xylol \$\$ 1,3-Xylene \$\$ 2,4-Xylene \$\$ m-Dimethylbenzene \$\$ 1,3-Dimethylbenzene \$\$ m-Meth

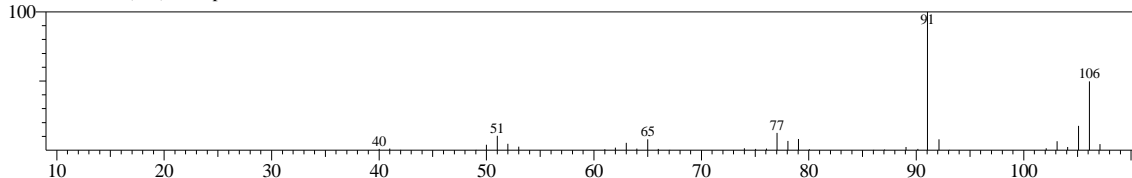


Hit#:3 Entry:2341 Library:NIST27.LIB
SI:98 Formula:C8H10 CAS:108-38-3 MolWeight:106 RetIndex:0
CompName:Benzen, 1,3-dimethyl-

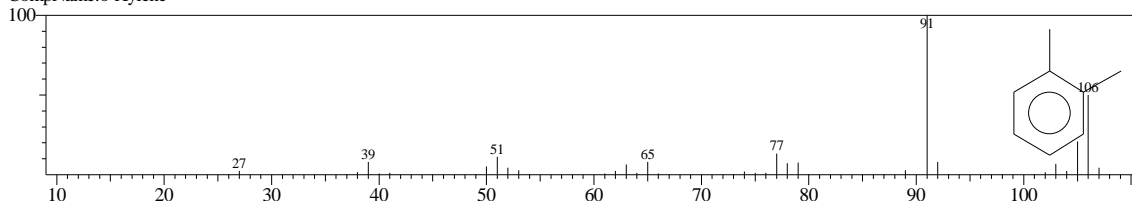


<< Target >>

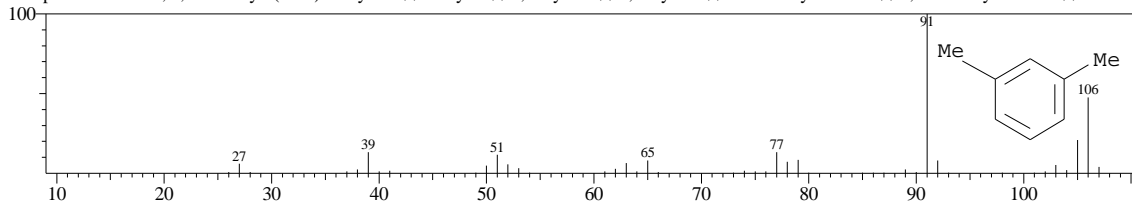
Line#:3 R.Time:5.983(Scan#:359) MassPeaks:37
RawMode:Single 5.983(359) BasePeak:91.05(369323)
BG Mode:6.067(369) Group 1 - Event 1



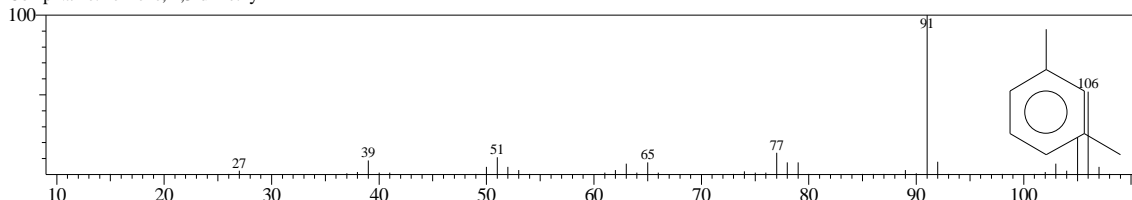
Hit#:1 Entry:2357 Library:NIST27.LIB
SI:98 Formula:C8H10 CAS:95-47-6 MolWeight:106 RetIndex:0
CompName:o-Xylene



Hit#:2 Entry:8902 Library:WILEY7.LIB
SI:98 Formula:C8 H10 CAS:108-38-3 MolWeight:106 RetIndex:0
CompName:Benzen, 1,3-dimethyl- (CAS) m-Xylene \$\$ m-Xylol \$\$ 1,3-Xylene \$\$ 2,4-Xylene \$\$ m-Dimethylbenzene \$\$ 1,3-Dimethylbenzene \$\$ m-Meth

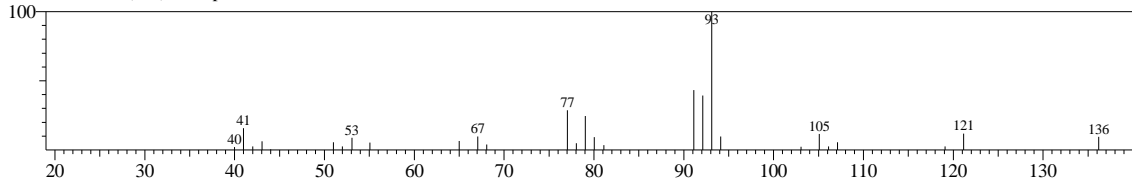


Hit#:3 Entry:2341 Library:NIST27.LIB
SI:98 Formula:C8H10 CAS:108-38-3 MolWeight:106 RetIndex:0
CompName:Benzen, 1,3-dimethyl-

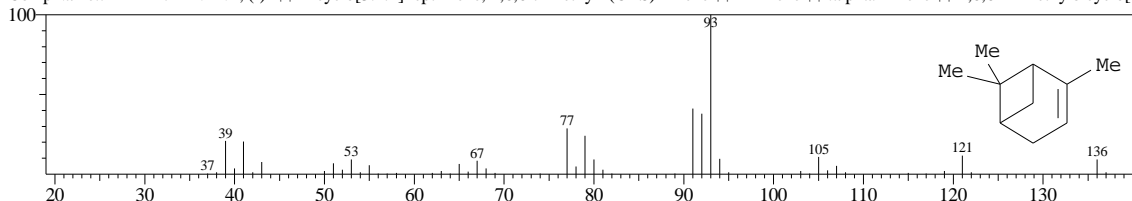


<< Target >>

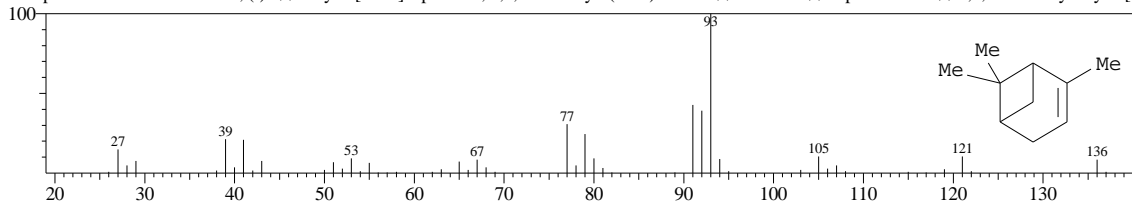
Line#:4 R.Time:7.017(Scan#:483) MassPeaks:28
RawMode:Single 7.017(483) BasePeak:93.10(55089)
BG Mode:7.075(490) Group 1 - Event 1



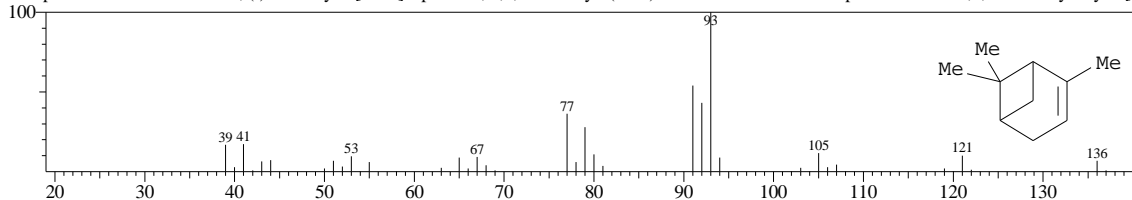
Hit#:1 Entry:26447 Library:WILEY7.LIB
SI:96 Formula:C10 H16 CAS:80-56-8 MolWeight:136 RetIndex:0
CompName:.ALPHA.-PINENE, (-) \$\$ Bicyclo[3.1.1]hept-2-ene, 2,6,6-trimethyl- (CAS) Pinene \$\$ 2-Pinene \$\$.alpha.-Pinene \$\$ 2,6,6-Trimethylbicyclo[3.



Hit#:2 Entry:26444 Library:WILEY7.LIB
SI:96 Formula:C10 H16 CAS:80-56-8 MolWeight:136 RetIndex:0
CompName:..ALPHA.-PINENE, (-) -\$\$ Bicyclo[3.1.1]hept-2-ene, 2,6,6-trimethyl- (CAS) Pinene \$\$ 2-Pinene \$\$.alpha.-Pinene \$\$ 2,6,6-Trimethylbicyclo[3

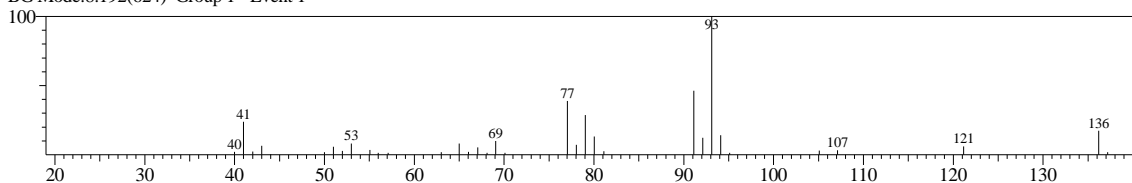


Hit#:3 Entry:26449 Library:WILEY7.LIB
SI:95 Formula:C10 H16 CAS:80-56-8 MolWeight:136 RetIndex:0
CompName:..ALPHA.-PINENE, (-) -\$\$ Bicyclo[3.1.1]hept-2-ene, 2,6,6-trimethyl- (CAS) Pinene \$\$ 2-Pinene \$\$.alpha.-Pinene \$\$ 2,6,6-Trimethylbicyclo[3

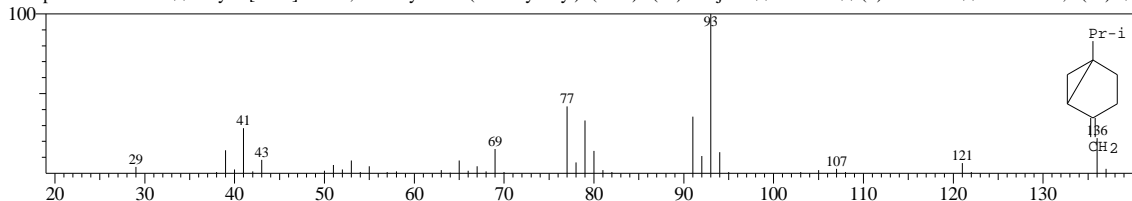


<< Target >>

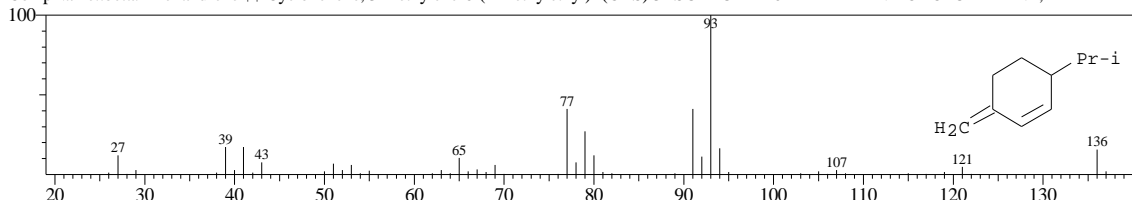
Line#:5 R.Time:8.150(Scan#:619) MassPeaks:34
RawMode:Single 8.150(619) BasePeak:93.10(76541)
BG Mode:8.192(624) Group 1 - Event 1



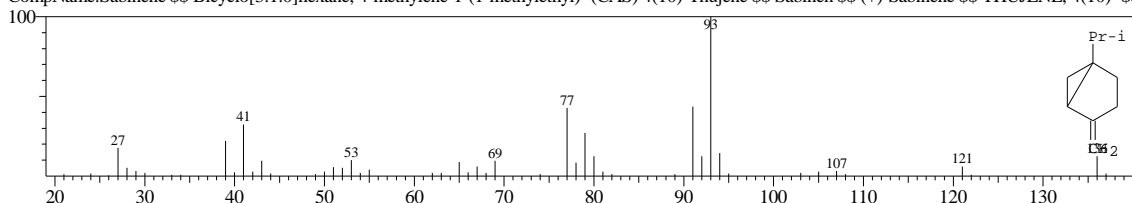
Hit#:1 Entry:26425 Library:WILEY7.LIB
SI:96 Formula:C10 H16 CAS:3387-41-5 MolWeight:136 RetIndex:0
CompName:Sabinene \$\$ Bicyclo[3.1.0]hexane, 4-methylene-1-(1-methylethyl)- (CAS) 4(10)-Thujene \$\$ Sabinen \$\$ (+)-Sabinene \$\$ THUJENE, 4(10)- \$\$



Hit#:2 Entry:26356 Library:WILEY7.LIB
SI:96 Formula:C10 H16 CAS:555-10-2 MolWeight:136 RetIndex:0
CompName:..beta.-Phellandrene \$\$ Cyclohexene, 3-methylene-6-(1-methylethyl)- (CAS) 3-ISOPROPYL-6-METHYLENE-CYCLOHEXENE, 2-PARA-ME

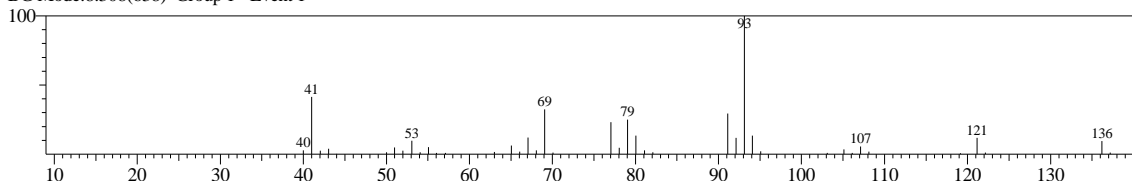


Hit#:3 Entry:26430 Library:WILEY7.LIB
SI:96 Formula:C10 H16 CAS:3387-41-5 MolWeight:136 RetIndex:0
CompName:Sabinene \$\$ Bicyclo[3.1.0]hexane, 4-methylene-1-(1-methylethyl)- (CAS) 4(10)-Thujene \$\$ Sabinen \$\$ (+)-Sabinene \$\$ THUJENE, 4(10)- \$\$

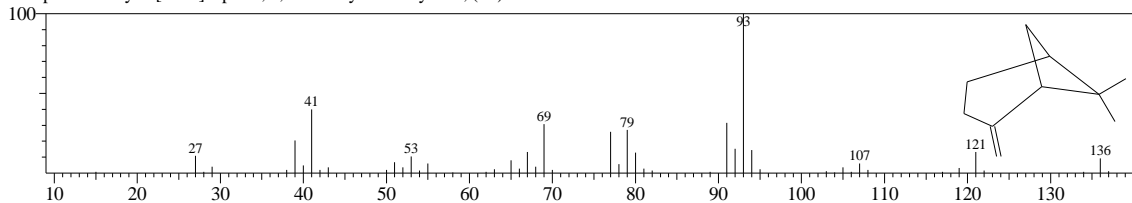


<< Target >>

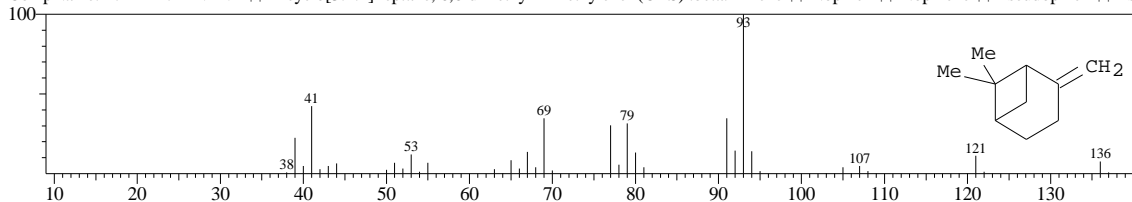
Line#:6 R.Time:8.233(Scan#:629) MassPeaks:41
RawMode:Single 8.233(629) BasePeak:93.10(144343)
BG Mode:8.308(638) Group 1 - Event 1



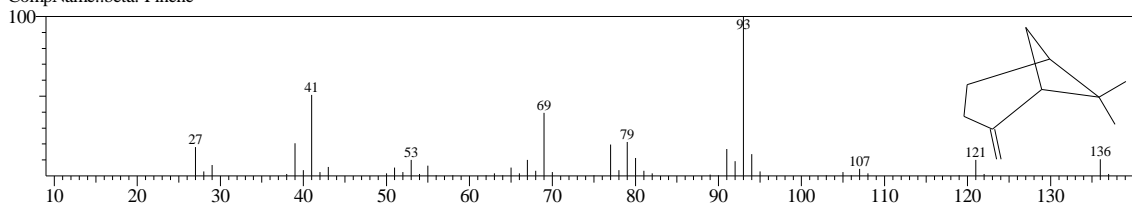
Hit#:1 Entry:6293 Library:NIST27.LIB
SI:97 Formula:C10H16 CAS:18172-67-3 MolWeight:136 RetIndex:0
CompName:Bicyclo[3.1.1]heptane, 6,6-dimethyl-2-methylene-, (1S)-



Hit#:2 Entry:26471 Library:WILEY7.LIB
SI:96 Formula:C10H16 CAS:127-91-3 MolWeight:136 RetIndex:0
CompName:2-BETA-PINENE \$\$ Bicyclo[3.1.1]heptane, 6,6-dimethyl-2-methylene- (CAS) .beta.-Pinene \$\$ Nopinene \$\$ Pseudopinene \$\$ Pse

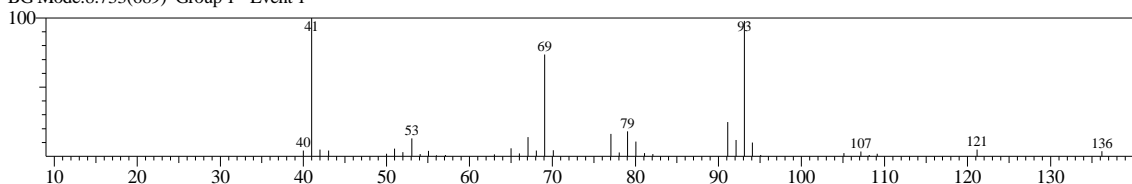


Hit#:3 Entry:6357 Library:NIST27.LIB
SI:96 Formula:C10H16 CAS:127-91-3 MolWeight:136 RetIndex:0
CompName:.beta.-Pinene

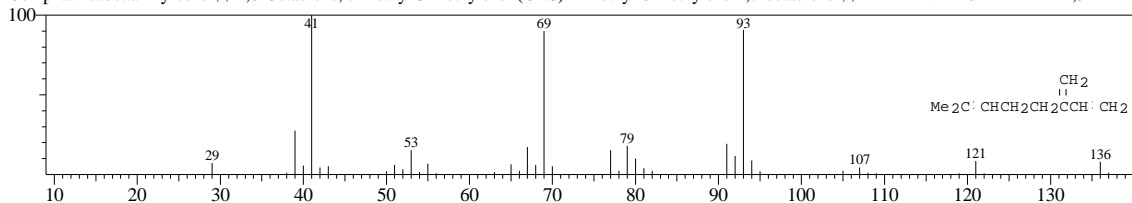


<< Target >>

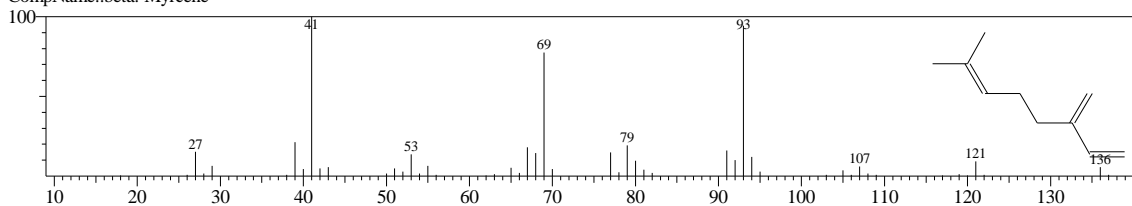
Line#:7 R.Time:8.642(Scan#:678) MassPeaks:37
RawMode:Single 8.642(678) BasePeak:41.00(143071)
BG Mode:8.733(689) Group 1 - Event 1



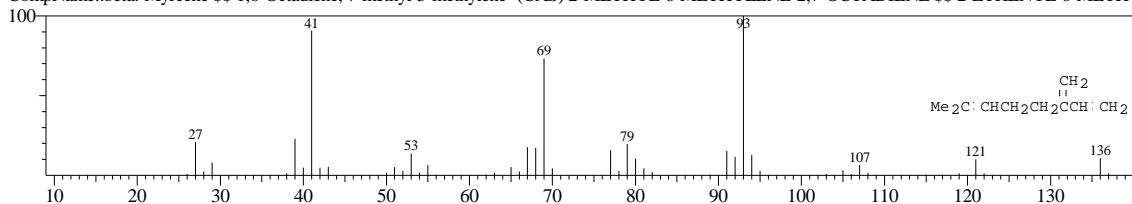
Hit#:1 Entry:26198 Library:WILEY7.LIB
SI:96 Formula:C10H16 CAS:123-35-3 MolWeight:136 RetIndex:0
CompName:.beta.-Myrcene \$\$ 1,6-Octadiene, 7-methyl-3-methylene- (CAS) 2-Methyl-6-methylene-2,7-octadiene \$\$ 2-ETHENYL-6-METHYL-1,5-HEPTA



Hit#:2 Entry:6370 Library:NIST27.LIB
SI:96 Formula:C10H16 CAS:123-35-3 MolWeight:136 RetIndex:0
CompName:.beta.-Myrcene

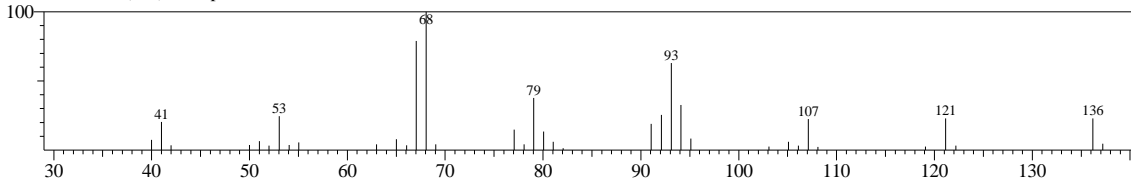


Hit#:3 Entry:26193 Library:WILEY7.LIB
SI:96 Formula:C10H16 CAS:123-35-3 MolWeight:136 RetIndex:0
CompName:.beta.-Myrcene \$\$ 1,6-Octadiene, 7-methyl-3-methylene- (CAS) 2-METHYL-6-METHYLENE-2,7-OCTADIENE \$\$ 2-ETHENYL-6-METHY

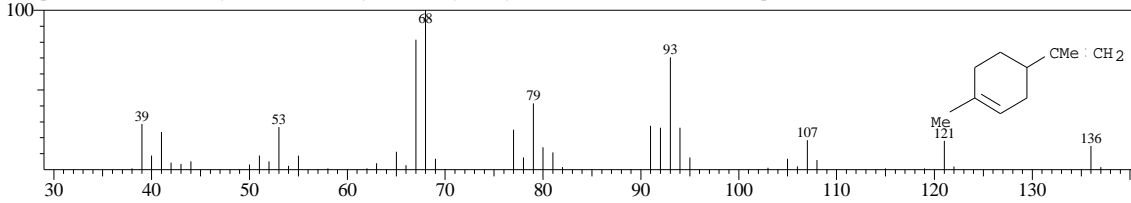


<< Target >>

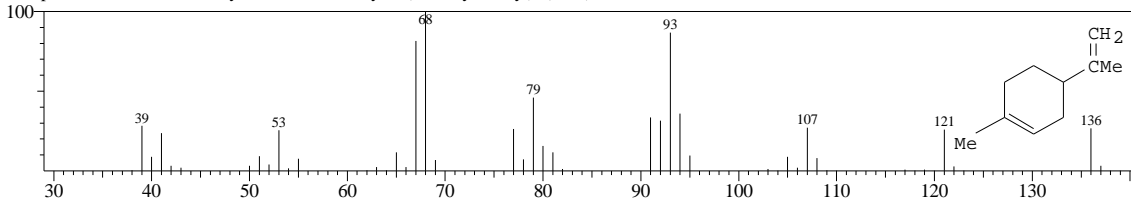
Line#:8 R.Time:9.775(Scan#:814) MassPeaks:36
RawMode:Single 9.775(814) BasePeak:68.05(42205)
BG Mode:9.800(817) Group 1 - Event 1



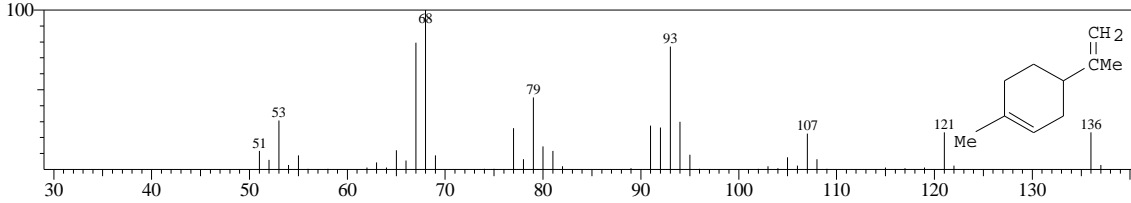
Hit#:1 Entry:26325 Library:WILEY7.LIB
SI:95 Formula:C10 H16 CAS:5989-54-8 MolWeight:136 RetIndex:0
CompName:l-Limonene \$\$ Cyclohexene, 1-methyl-4-(1-methylethenyl)-, (S)- (CAS) \$ (-)-Limonene \$\$ p-Mentha-1,8-diene, (S)-(-) \$ (-)-Limonene \$\$ Lin



Hit#:2 Entry:26305 Library:WILEY7.LIB
SI:95 Formula:C10 H16 CAS:138-86-3 MolWeight:136 RetIndex:0
CompName:dl-Limonene \$\$ Cyclohexene, 1-methyl-4-(1-methylethenyl)- (CAS) 1-P-MENTHA-1,8-DIENE \$\$ Limonene \$Cinen \$\$ Nesol \$\$ Cinene \$\$ Li

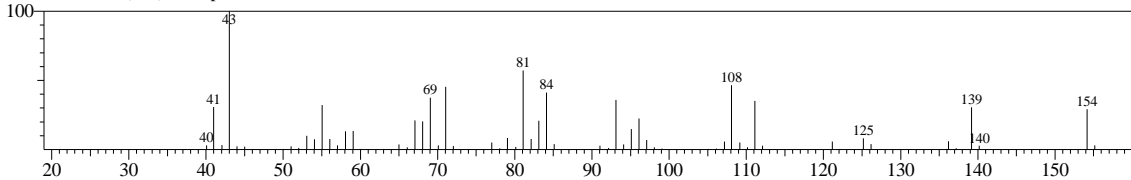


Hit#:3 Entry:26311 Library:WILEY7.LIB
SI:93 Formula:C10 H16 CAS:138-86-3 MolWeight:136 RetIndex:0
CompName:dl-Limonene \$\$ Cyclohexene, 1-methyl-4-(1-methylethenyl)- (CAS) 1-P-MENTHA-1,8-DIENE \$\$ Limonene \$Cinen \$\$ Nesol \$\$ Cinene \$\$ Li

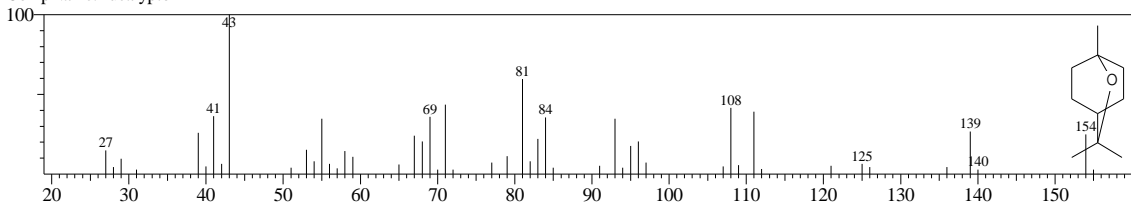


<< Target >>

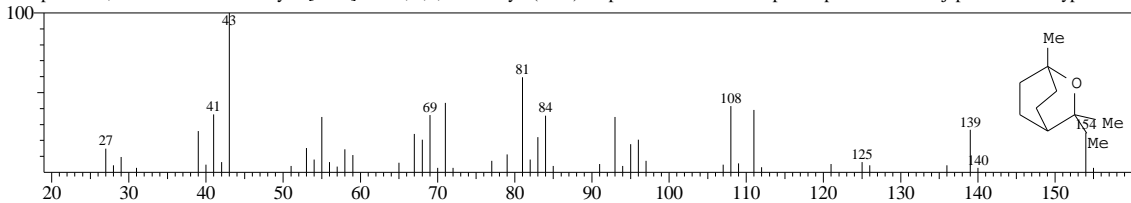
Line#:9 R.Time:9.858(Scan#:824) MassPeaks:81
RawMode:Single 9.858(824) BasePeak:43.00(1542491)
BG Mode:9.908(830) Group 1 - Event 1



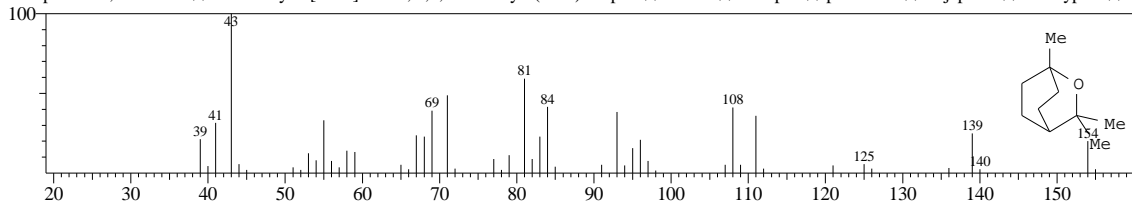
Hit#:1 Entry:9396 Library:NIST27.LIB
SI:97 Formula:C10H18O CAS:470-82-6 MolWeight:154 RetIndex:0
CompName:Eucalyptol



Hit#:2 Entry:43986 Library:WILEY7.LIB
SI:97 Formula:C10 H18 O CAS:470-82-6 MolWeight:154 RetIndex:0
CompName:1,8-Cineole \$\$ 2-Oxabicyclo[2.2.2]octane, 1,3,3-trimethyl- (CAS) Terpan \$\$ Zineol \$\$ Eucapur \$\$ p-Cineole \$\$ Cajeputol \$\$ Eucalyptol \$\$ C

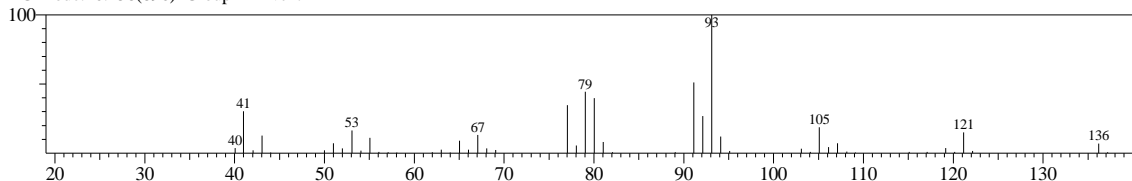


Hit#:3 Entry:43987 Library:WILEY7.LIB
SI:97 Formula:C10 H18 O CAS:470-82-6 MolWeight:154 RetIndex:0
CompName:1,8-Cineole \$\$ 2-Oxabicyclo[2.2.2]octane, 1,3,3-trimethyl- (CAS) Terpan \$\$ Zineol \$\$ Eucapur \$\$ p-Cineole \$\$ Cajeputol \$\$ Eucalyptol \$\$ C

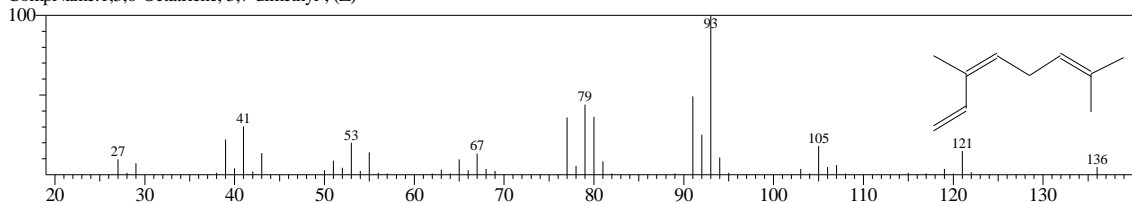


<< Target >>

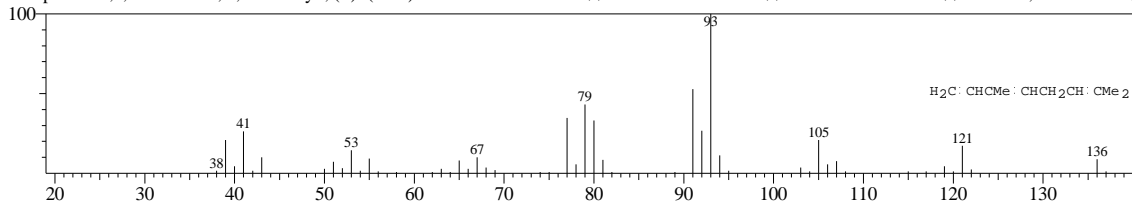
Line#:10 R.Time:10.350(Scan#:883) MassPeaks:49
RawMode:Single 10.350(883) BasePeak:93.10(299164)
BG Mode:10.458(896) Group 1 - Event 1



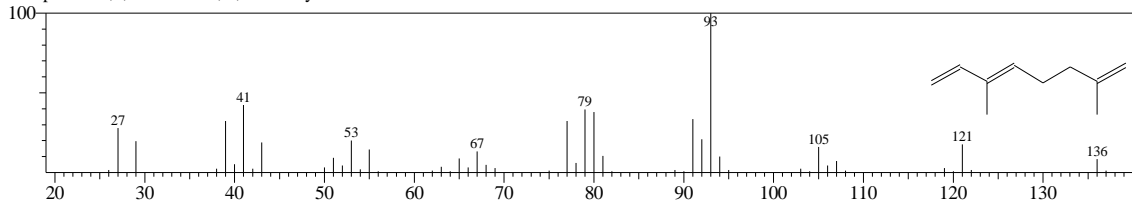
Hit#:1 Entry:6321 Library:NIST27.LIB
SI:98 Formula:C10H16 CAS:3338-55-4 MolWeight:136 RetIndex:0
CompName:1,3,6-Octatriene, 3,7-dimethyl-, (Z)-



Hit#:2 Entry:26155 Library:WILEY7.LIB
SI:98 Formula:C10 H16 CAS:3779-61-1 MolWeight:136 RetIndex:0
CompName:1,3,6-Octatriene, 3,7-dimethyl-, (E)- (CAS) .BETA. OCIMENE Y \$\$ trans-.beta.-Ocimene \$\$.beta.-trans-Ocimene \$\$ Ocimene, trans-.beta.- \$

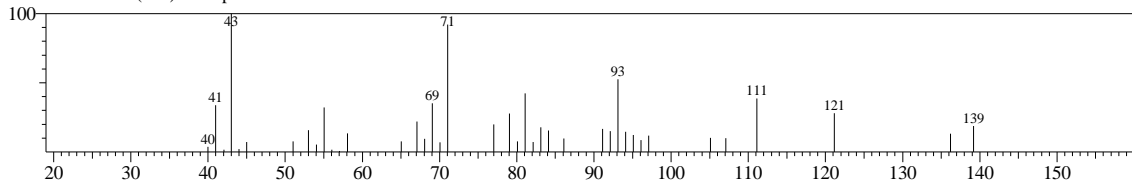


Hit#:3 Entry:6368 Library:NIST27.LIB
SI:96 Formula:C10H16 CAS:502-99-8 MolWeight:136 RetIndex:0
CompName:1,3,7-Octatriene, 3,7-dimethyl-

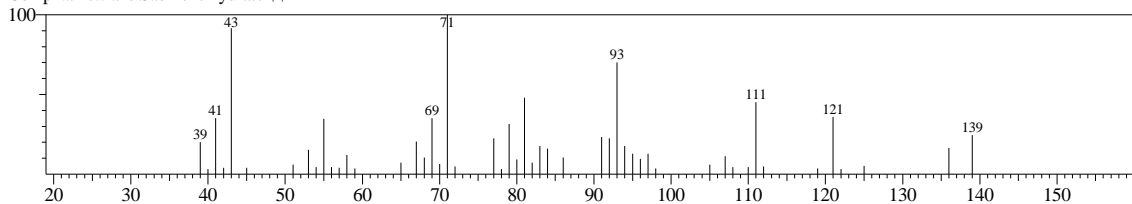


<< Target >>

Line#:11 R.Time:10.992(Scan#:960) MassPeaks:40
RawMode:Single 10.992(960) BasePeak:43.00(18622)
BG Mode:11.075(970) Group 1 - Event 1



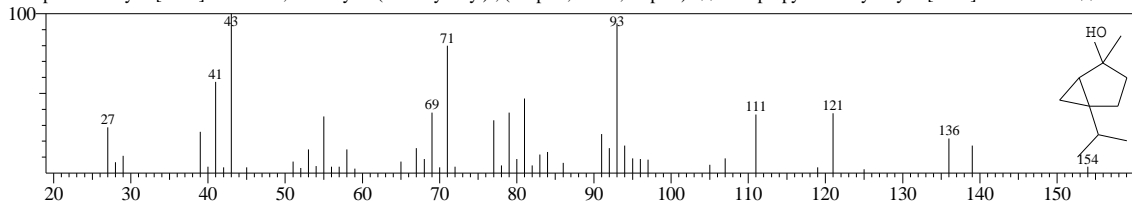
Hit#:1 Entry:44050 Library:WILEY7.LIB
SI:94 Formula:C10 H18 O CAS:17699-16-0 MolWeight:154 RetIndex:0
CompName:trans Sabinene hydrate \$\$



Hit#:2 Entry:16847 Library:NIST147.LIB

SI:93 Formula:C10H18O CAS:15537-55-0 MolWeight:154 RetIndex:0

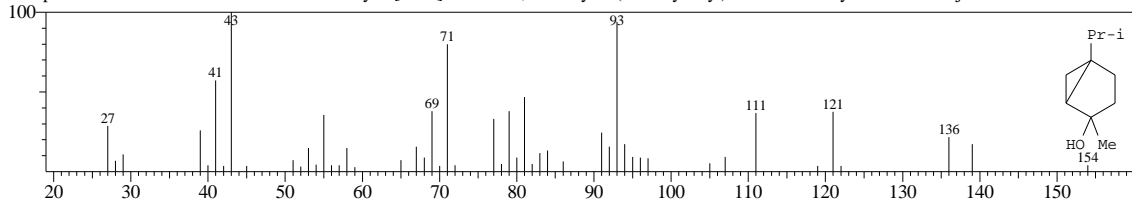
CompName:Bicyclo[3.1.0]hexan-2-ol, 2-methyl-5-(1-methylethyl)-, (1.alpha.,2.beta.,5.alpha.)- \$\$ 5-Isopropyl-2-methylbicyclo[3.1.0]hexan-2-ol # \$\$



Hit#:3 Entry:43899 Library:WILEY7.LIB

SI:93 Formula:C10 H18 O CAS:546-79-2 MolWeight:154 RetIndex:0

CompName:CIS-SABINENEHYDRATE \$\$ Bicyclo[3.1.0]hexan-2-ol, 2-methyl-5-(1-methylethyl)- \$\$ Sabinene hydrate \$\$ 4-Thujanol \$\$

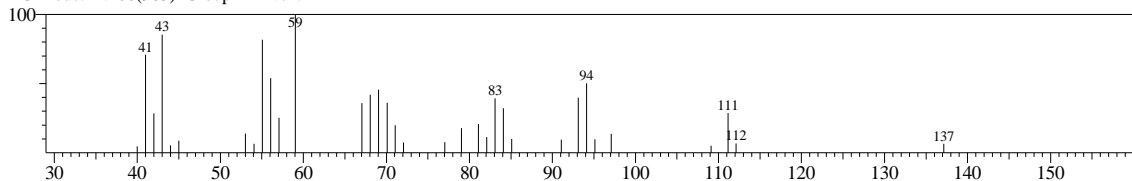


<< Target >>

Line#:12 R.Time:11.117(Scan#:975) MassPeaks:34

RawMode:Single 11.117(975) BasePeak:59.05(19821)

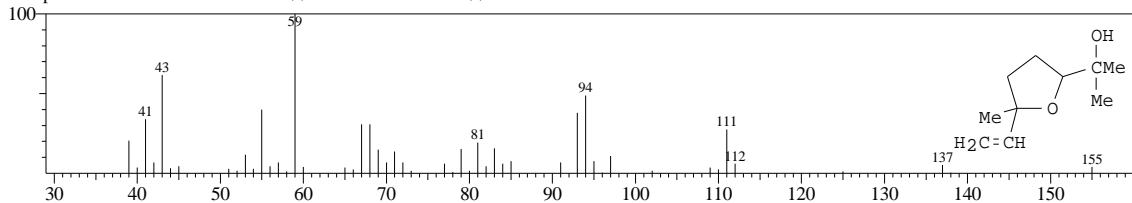
BG Mode:11.200(985) Group 1 - Event 1



Hit#:1 Entry:60370 Library:WILEY7.LIB

SI:87 Formula:C10 H18 O2 CAS:5989-33-3 MolWeight:170 RetIndex:0

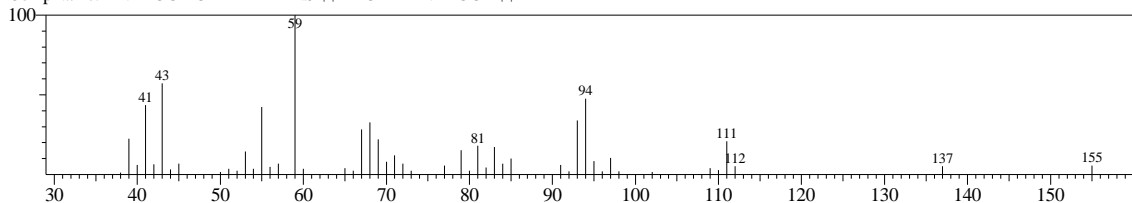
CompName:LINALOOL OXIDE CIS \$\$ EPOXYLINALOOL \$\$



Hit#:2 Entry:60371 Library:WILEY7.LIB

SI:87 Formula:C10 H18 O2 CAS:34995-77-2 MolWeight:170 RetIndex:0

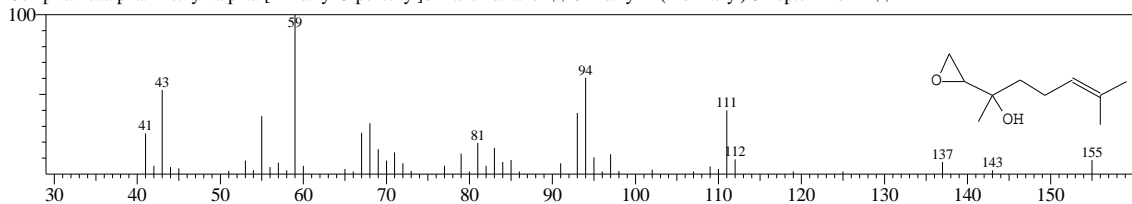
CompName:LINALOOL OXIDE TRANS \$\$ EPOXYLINALOOL \$\$



Hit#:3 Entry:24329 Library:NIST147.LIB

SI:85 Formula:C10H18O2 CAS:0-00-0 MolWeight:170 RetIndex:0

CompName:.alpha.-Methyl-.alpha.-[4-methyl-3-pentenyl]oxiranemethanol \$\$ 6-Methyl-2-(2-oxiranyl)-5-hepten-2-ol # \$\$

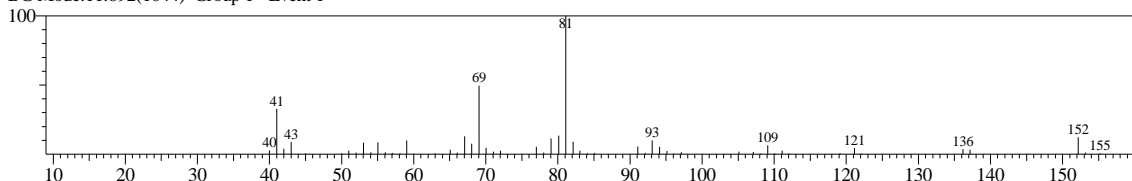


<< Target >>

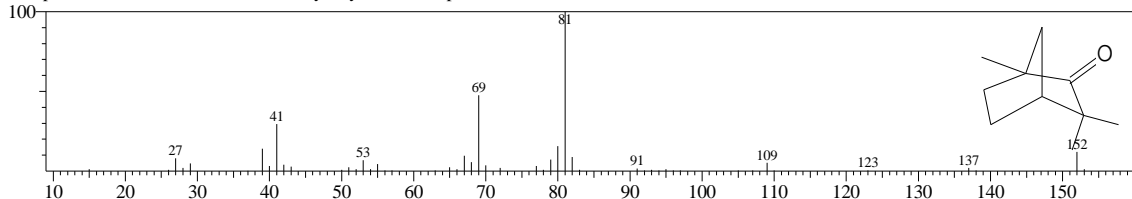
Line#:13 R.Time:11.600(Scan#:1033) MassPeaks:57

RawMode:Single 11.600(1033) BasePeak:81.10(232211)

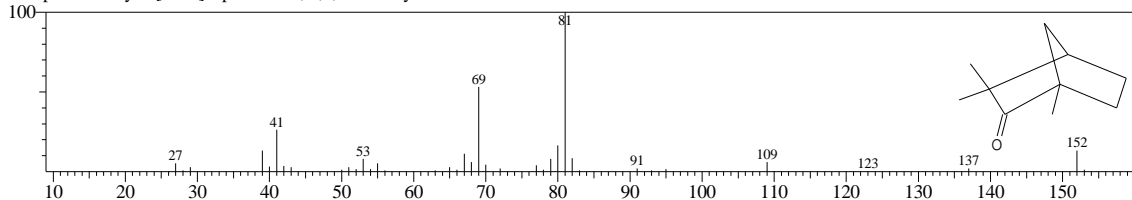
BG Mode:11.692(1044) Group 1 - Event 1



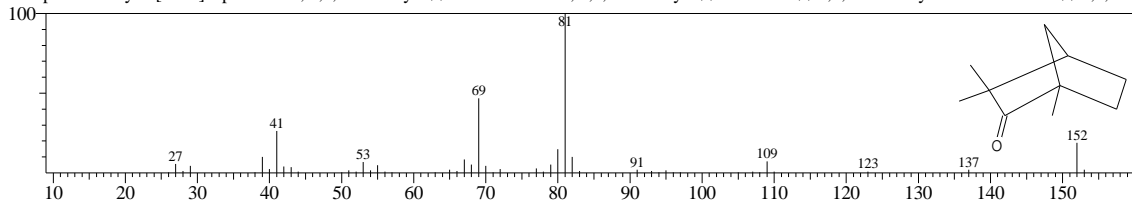
Hit#:1 Entry:15677 Library:NIST147.LIB
SI:91 Formula:C10H16O CAS:126-21-6 MolWeight:152 RetIndex:0
CompName:L-Fenchone \$ 1,3,3-Trimethylbicyclo[2.2.1]heptan-2-one # \$ \$



Hit#:2 Entry:8965 Library:NIST27.LIB
SI:91 Formula:C10H16O CAS:1195-79-5 MolWeight:152 RetIndex:0
CompName:Bicyclo[2.2.1]heptan-2-one, 1,3,3-trimethyl-

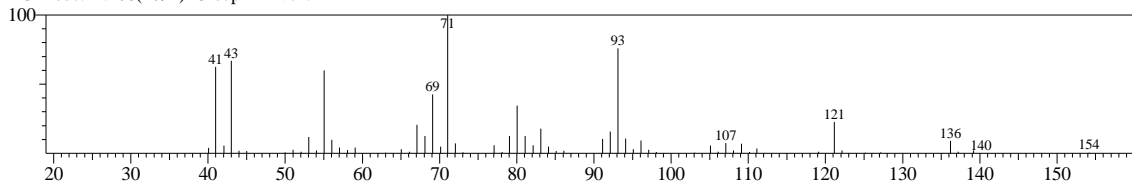


Hit#:3 Entry:15683 Library:NIST147.LIB
SI:90 Formula:C10H16O CAS:1195-79-5 MolWeight:152 RetIndex:0
CompName:Bicyclo[2.2.1]heptan-2-one, 1,3,3-trimethyl- \$ 2-Norbomanone, 1,3,3-trimethyl- \$ Fenhone \$ 1,3,3-Trimethyl-2-norbomanone \$ 1,3,3-Tr

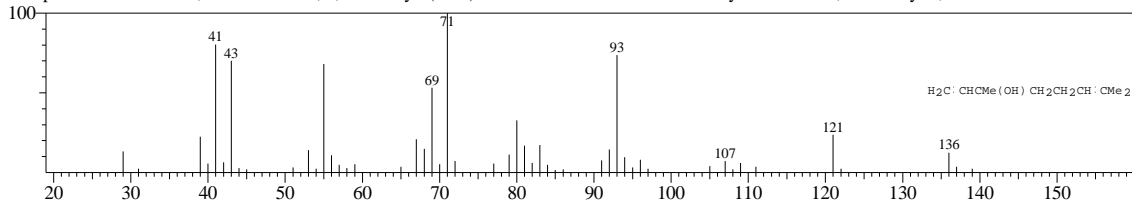


<< Target >>

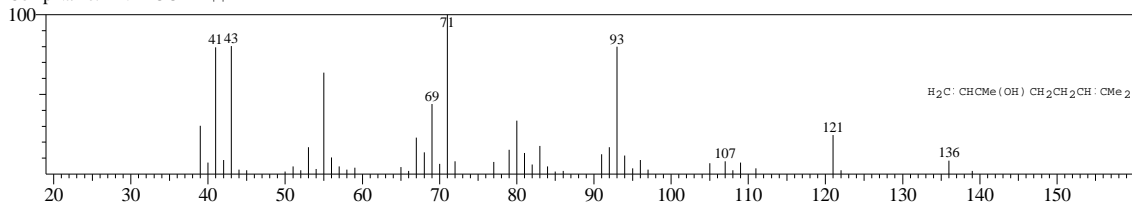
Line#:14 R.Time:12.042(Scan#:1086) MassPeaks:93
RawMode:Single 12.042(1086) BasePeak:71.05(4226167)
BG Mode:12.108(1094) Group 1 - Event 1



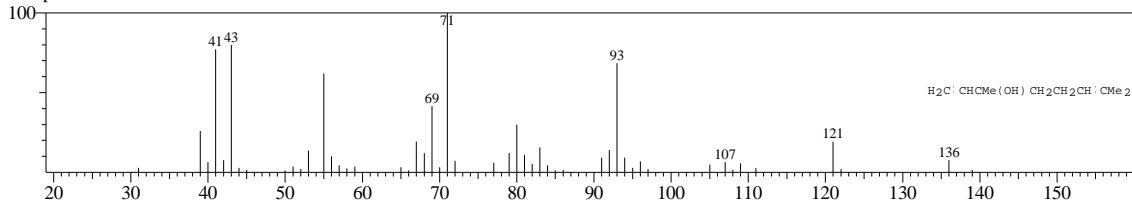
Hit#:1 Entry:43693 Library:WILEY7.LIB
SI:97 Formula:C10H18O CAS:78-70-6 MolWeight:154 RetIndex:0
CompName:Linalool \$ 1,6-Octadien-3-ol, 3,7-dimethyl- (CAS) Linalol \$.beta.-Linalool \$ Linalyl alcohol \$ 2,6-Dimethyl-2,7-octadien-6-ol \$ allo-Oci



Hit#:2 Entry:42931 Library:WILEY7.LIB
SI:97 Formula:C10H18O CAS:78-70-6 MolWeight:154 RetIndex:0
CompName:LINALOOL L \$ \$

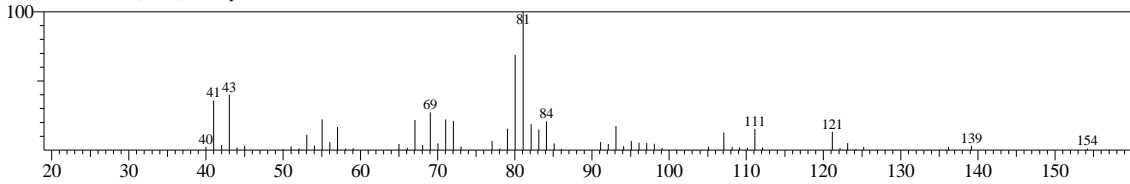


Hit#:3 Entry:42910 Library:WILEY7.LIB
SI:97 Formula:C10H18O CAS:78-70-6 MolWeight:154 RetIndex:0
CompName:L-LINALOOL \$ \$

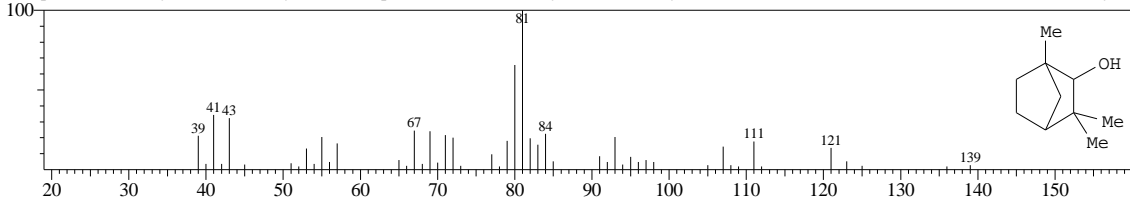


<< Target >>

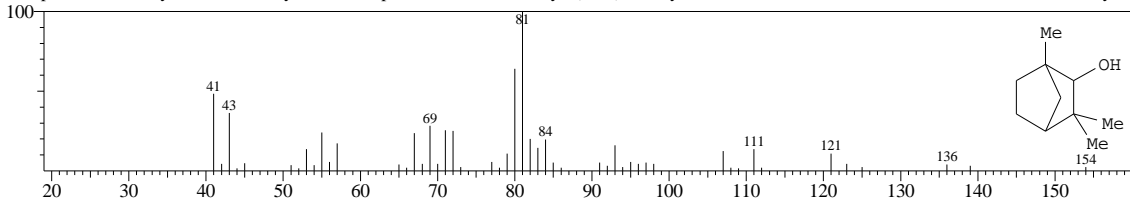
Line#:15 R.Time:12.450(Scan#:1135) MassPeaks:59
RawMode:Single 12.450(1135) BasePeak:81.10(165865)
BG Mode:12.558(1148) Group 1 - Event 1



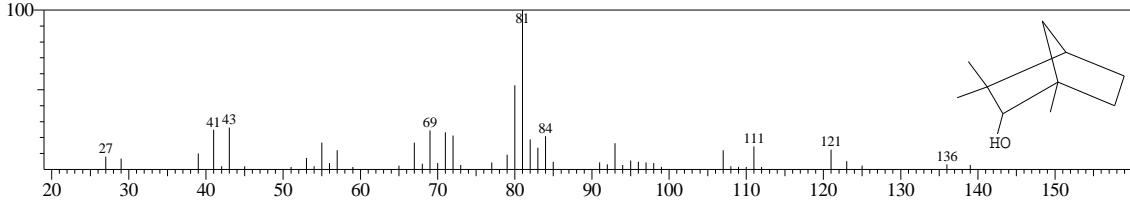
Hit#:1 Entry:43938 Library:WILEY7.LIB
SI:97 Formula:C10 H18 O CAS:1632-73-1 MolWeight:154 RetIndex:0
CompName:D-Fenchyl alcohol \$\$ Bicyclo[2.2.1]heptan-2-ol, 1,3,3-trimethyl- (CAS) Fenchyl alcohol \$\$ Fenchol \$\$ 2-Fenchanol one \$\$ 1,3,3-Trimethyl-2-



Hit#:2 Entry:43939 Library:WILEY7.LIB
SI:96 Formula:C10 H18 O CAS:1632-73-1 MolWeight:154 RetIndex:0
CompName:D-Fenchyl alcohol \$\$ Bicyclo[2.2.1]heptan-2-ol, 1,3,3-trimethyl- (CAS) Fenchyl alcohol \$\$ Fenchol \$\$ 2-Fenchanol one \$\$ 1,3,3-Trimethyl-2-

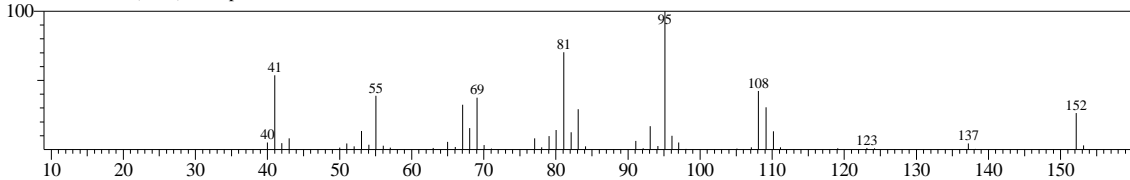


Hit#:3 Entry:16903 Library:NIST147.LIB
SI:95 Formula:C10H18O CAS:1632-73-1 MolWeight:154 RetIndex:0
CompName:Bicyclo[2.2.1]heptan-2-ol, 1,3,3-trimethyl- \$\$ 2-Norbornanol, 1,3,3-trimethyl- \$\$ D-Fenchyl alcohol \$\$ Fenchol \$\$ Fenchyl alcohol \$\$ 1,3,3-Tri-

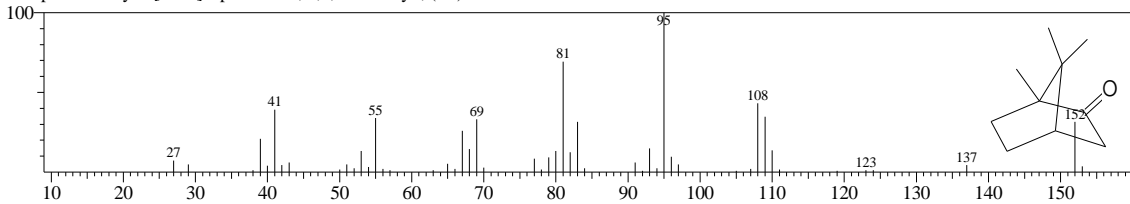


<< Target >>

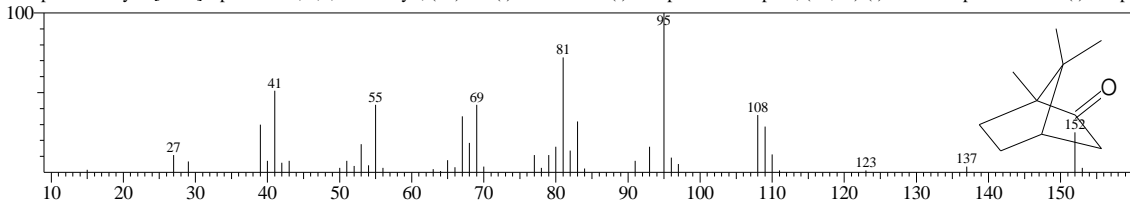
Line#:16 R.Time:13.333(Scan#:1241) MassPeaks:50
RawMode:Single 13.333(1241) BasePeak:95.10(252720)
BG Mode:13.442(1254) Group 1 - Event 1



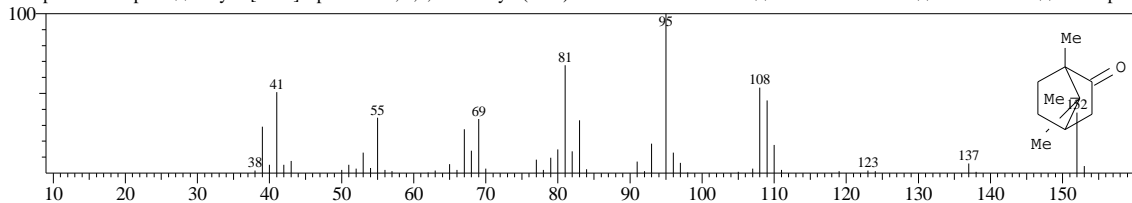
Hit#:1 Entry:9012 Library:NIST27.LIB
SI:98 Formula:C10H16O CAS:464-49-3 MolWeight:152 RetIndex:0
CompName:Bicyclo[2.2.1]heptan-2-one, 1,7,7-trimethyl-, (1R)-



Hit#:2 Entry:15746 Library:NIST147.LIB
SI:97 Formula:C10H16O CAS:464-48-2 MolWeight:152 RetIndex:0
CompName:Bicyclo[2.2.1]heptan-2-one, 1,7,7-trimethyl-, (1S)- \$\$ (-)-Alcanfor \$\$ (-)-Camphor \$\$ Camphor, (1S,4S)-(-) \$\$ L-camphor \$\$ Levo(-)-campho

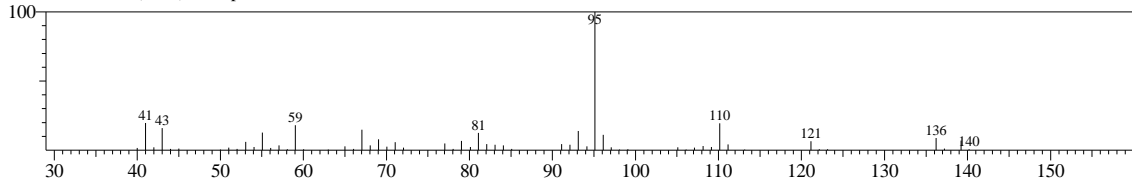


Hit#:3 Entry:41217 Library:WILEY7.LIB
SI:97 Formula:C10 H16 O CAS:76-22-2 MolWeight:152 RetIndex:0
CompName:Camphor \$\$ Bicyclo[2.2.1]heptan-2-one, 1,7,7-trimethyl- (CAS) NORBORNAN-2-ONE \$\$ BORNAN-2-ONE \$\$ 2-Bornanone \$\$ 2-Camphan

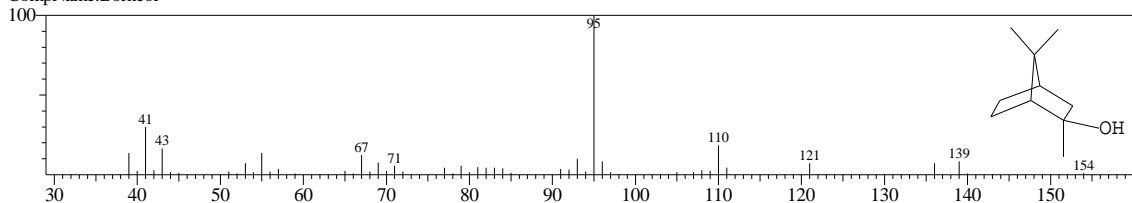


<< Target >>

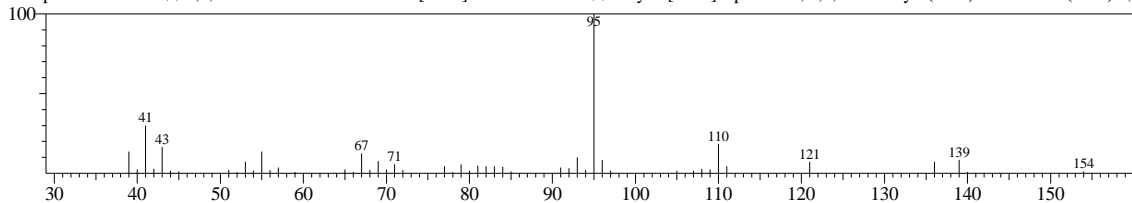
Line#:17 R.Time:14.042(Scan#:1326) MassPeaks:59
RawMode:Single 14.042(1326) BasePeak:95.10(265975)
BG Mode:14.158(1340) Group 1 - Event 1



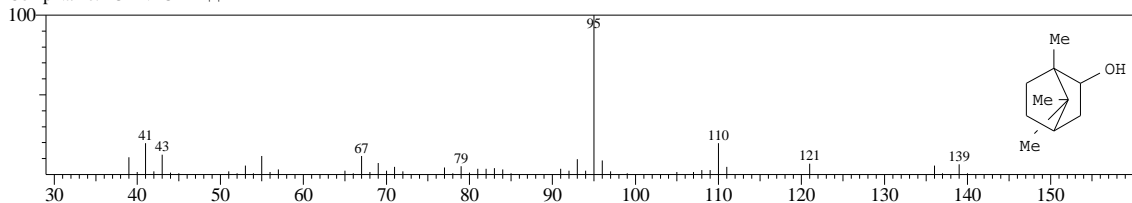
Hit#:1 Entry:9440 Library:NIST27.LIB
SI:95 Formula:C10H18O CAS:10385-78-1 MolWeight:154 RetIndex:0
CompName:Borneol



Hit#:2 Entry:44020 Library:WILEY7.LIB
SI:95 Formula:C10 H18 O CAS:10385-78-1 MolWeight:154 RetIndex:0
CompName:Borneol \$\$ 1,7,7-TRIMETHYL-BICYCLO[2.2.1]HEPTAN-2-OL \$\$ Bicyclo[2.2.1]heptan-2-ol, 1,7,7-trimethyl- (CAS) 2-Bornanol (CAS) 1,7

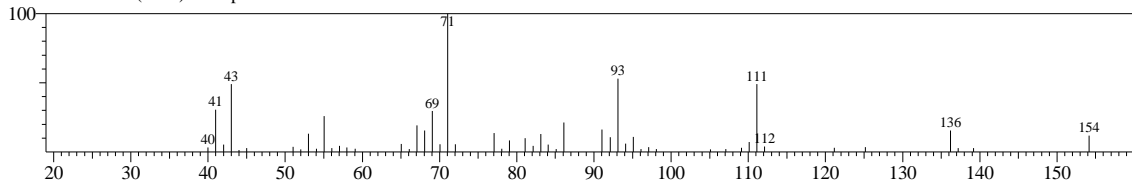


Hit#:3 Entry:42932 Library:WILEY7.LIB
SI:94 Formula:C10 H18 O CAS:464-45-9 MolWeight:154 RetIndex:0
CompName:BORNEOL L \$\$

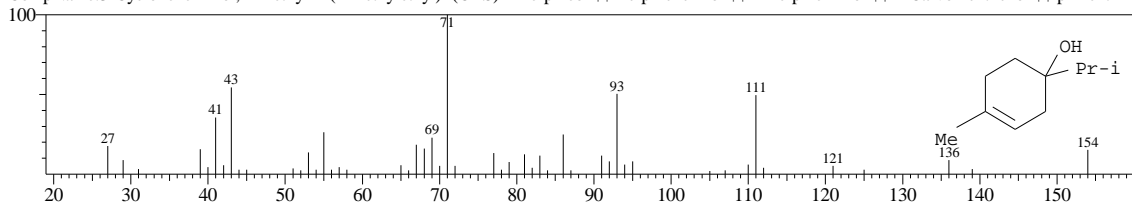


<< Target >>

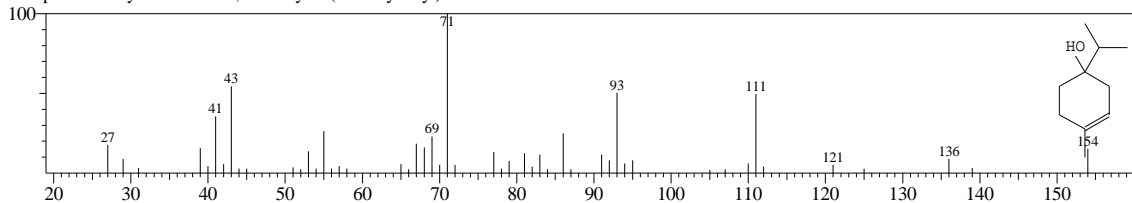
Line#:18 R.Time:14.350(Scan#:1363) MassPeaks:52
RawMode:Single 14.350(1363) BasePeak:71.05(56203)
BG Mode:14.442(1374) Group 1 - Event 1



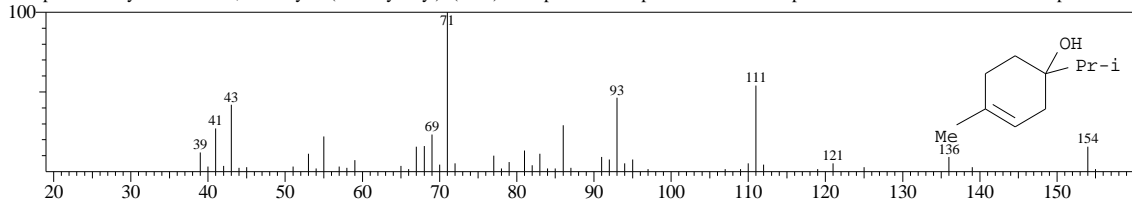
Hit#:1 Entry:43760 Library:WILEY7.LIB
SI:95 Formula:C10 H18 O CAS:562-74-3 MolWeight:154 RetIndex:0
CompName:3-Cyclohexen-1-ol, 4-methyl-1-(1-methylethyl)- (CAS) 4-Terpineol \$\$ Terpinene-4-ol \$\$ 1-Terpinen-4-ol \$\$ 4-Carvomenthenol \$\$ p-Menth-1-



Hit#:2 Entry:9409 Library:NIST27.LIB
SI:95 Formula:C10H18O CAS:562-74-3 MolWeight:154 RetIndex:0
CompName:3-Cyclohexen-1-ol, 4-methyl-1-(1-methylethyl)-

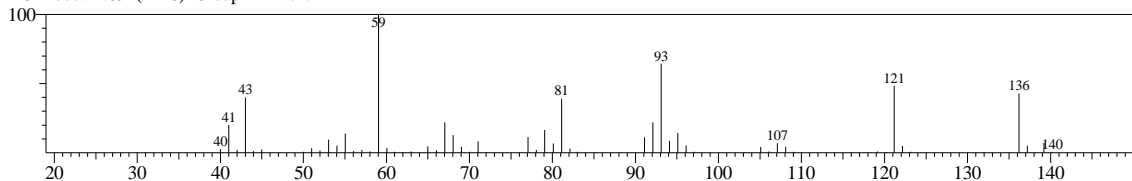


Hit#:3 Entry:43759 Library:WILEY7.LIB
SI:94 Formula:C10H18O CAS:562-74-3 MolWeight:154 RetIndex:0
CompName:3-Cyclohexen-1-ol, 4-methyl-1-(1-methylethyl)- (CAS) 4-Terpineol \$\$ Terpinene-4-ol \$\$ 1-Terpinen-4-ol \$\$ 4-Carvomenthenol \$\$ p-Menth-1-

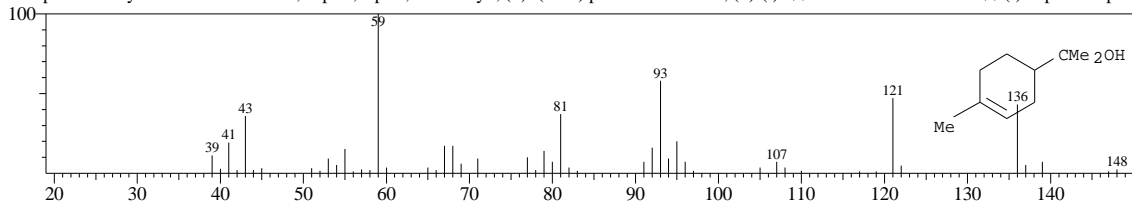


<< Target >>

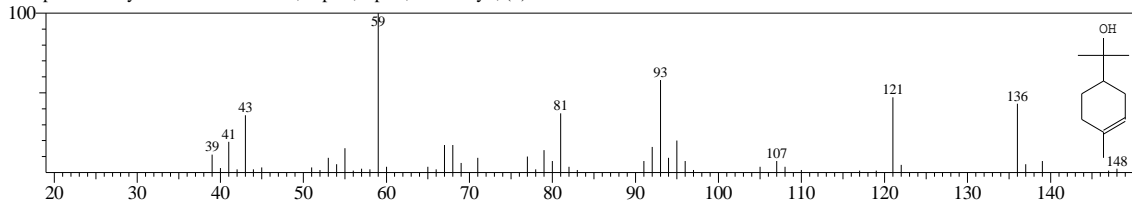
Line#:19 R.Time:14.775(Scan#:1414) MassPeaks:60
RawMode:Single 14.775(1414) BasePeak:59.05(302971)
BG Mode:14.892(1428) Group 1 - Event 1



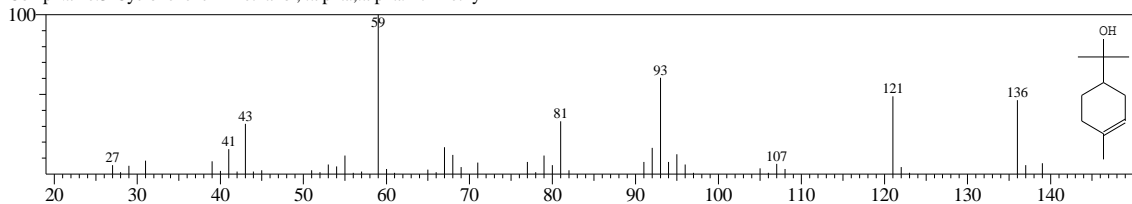
Hit#:1 Entry:43792 Library:WILEY7.LIB
SI:97 Formula:C10H18O CAS:10482-56-1 MolWeight:154 RetIndex:0
CompName:3-Cyclohexene-1-methanol, .alpha.,.alpha.,4-trimethyl-, (S)- (CAS) p-Menth-1-en-8-ol, (S)-(-)- \$\$ ALPHA-TERPINEOL \$\$ (-)-.alpha.-Terpineol



Hit#:2 Entry:9446 Library:NIST27.LIB
SI:97 Formula:C10H18O CAS:10482-56-1 MolWeight:154 RetIndex:0
CompName:3-Cyclohexene-1-methanol, .alpha.,.alpha.,4-trimethyl-, (S)-

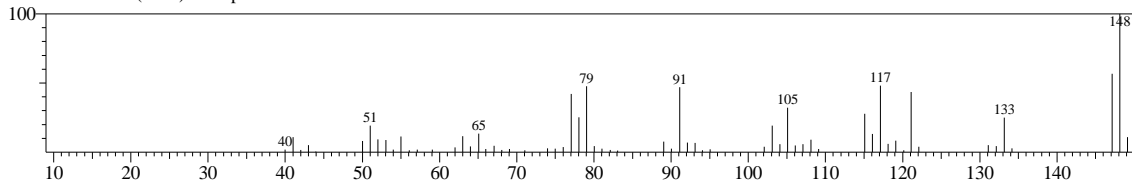


Hit#:3 Entry:9507 Library:NIST27.LIB
SI:96 Formula:C10H18O CAS:98-55-5 MolWeight:154 RetIndex:0
CompName:3-Cyclohexene-1-methanol, .alpha.,.alpha.,4-trimethyl-

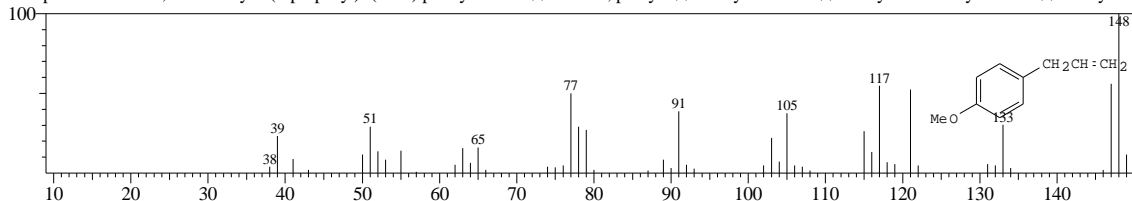


<< Target >>

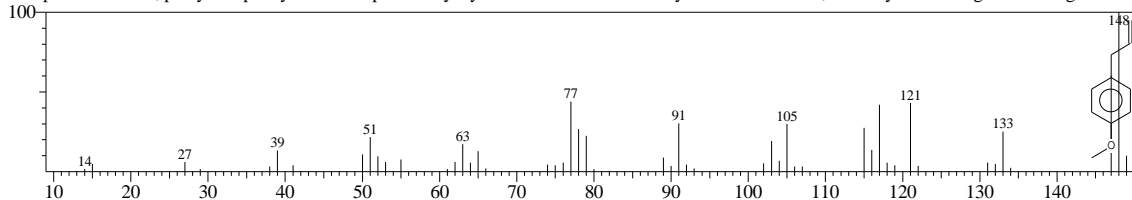
Line#:20 R.Time:14.958(Scan#:1436) MassPeaks:63
RawMode:Single 14.958(1436) BasePeak:148.15(88356)
BG Mode:15.067(1449) Group 1 - Event 1



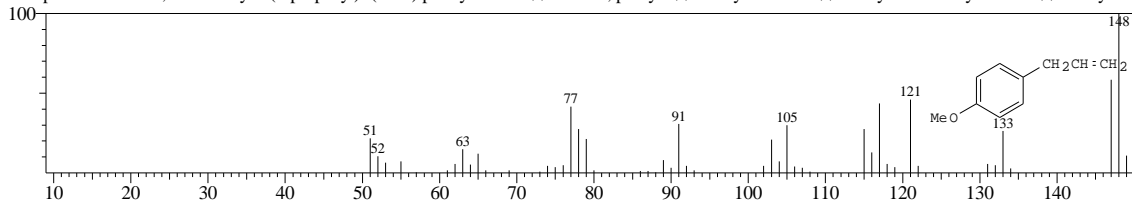
Hit#:1 Entry:36629 Library:WILEY7.LIB
SI:94 Formula:C10H12O CAS:140-67-0 MolWeight:148 RetIndex:0
CompName:Benzen, 1-methoxy-4-(2-propenyl)- (CAS) p-Allylanisole \$\$ Anisole, p-allyl- \$\$ Methyl chavicol \$\$ 1-Allyl-4-methoxybenzene \$\$ 4-Allylanis



Hit#:2 Entry:14003 Library:NIST147.LIB
SI:94 Formula:C10H12O CAS:140-67-0 MolWeight:148 RetIndex:0
CompName:Anisole, p-allyl- \$\$ p-Allylanisole \$\$ p-Methoxyallylbenzene \$\$ Chavicol methyl ether \$\$ Chavicol, O-methyl- \$\$ Esdragol \$\$ Esdragole \$\$ Es

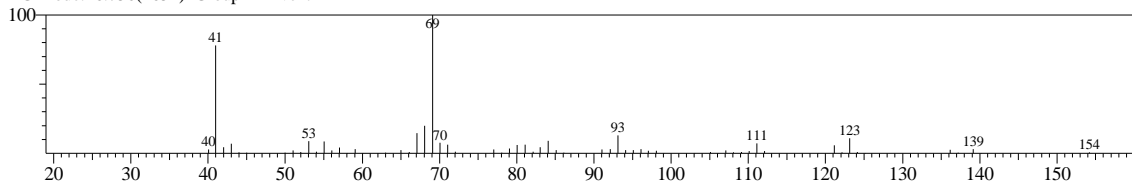


Hit#:3 Entry:36636 Library:WILEY7.LIB
SI:93 Formula:C10H12O CAS:140-67-0 MolWeight:148 RetIndex:0
CompName:Benzen, 1-methoxy-4-(2-propenyl)- (CAS) p-Allylanisole \$\$ Anisole, p-allyl- \$\$ Methyl chavicol \$\$ 1-Allyl-4-methoxybenzene \$\$ 4-Allylanis

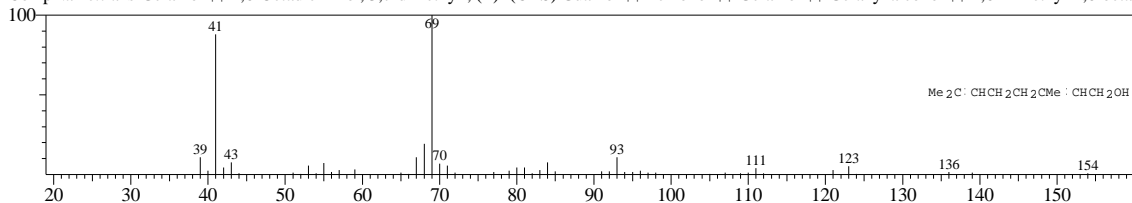


<< Target >>

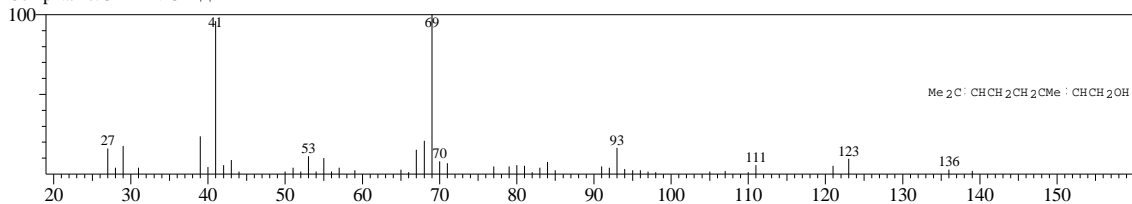
Line#:21 R.Time:16.633(Scan#:1637) MassPeaks:86
RawMode:Single 16.633(1637) BasePeak:69.10(3899966)
BG Mode:16.750(1651) Group 1 - Event 1



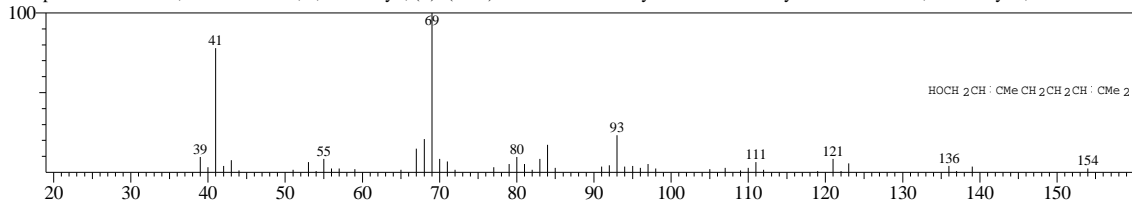
Hit#:1 Entry:43664 Library:WILEY7.LIB
SI:96 Formula:C10H18O CAS:106-24-1 MolWeight:154 RetIndex:0
CompName:trans-Geraniol \$\$ 2,6-Octadien-1-ol, 3,7-dimethyl-, (E)- (CAS) Guaniol \$\$ Lemonol \$\$ Geraniol \$\$ Geranyl alcohol \$\$ 2,6-Dimethyl-2,6-octad



Hit#:2 Entry:42946 Library:WILEY7.LIB
SI:96 Formula:C10H18O CAS:106-24-1 MolWeight:154 RetIndex:0
CompName:GERANIOL \$\$

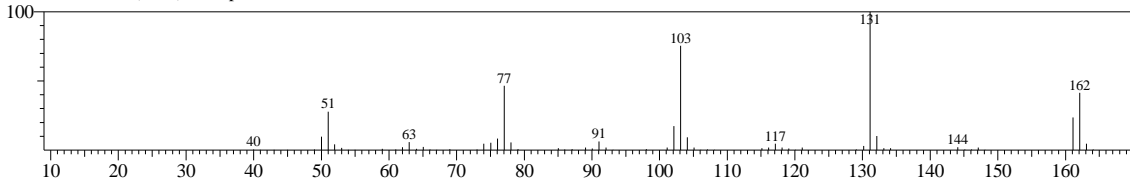


Hit#:3 Entry:43651 Library:WILEY7.LIB
SI:95 Formula:C10H18O CAS:106-25-2 MolWeight:154 RetIndex:0
CompName:Nerol \$\$ 2,6-Octadien-1-ol, 3,7-dimethyl-, (Z)- (CAS) cis-Geraniol \$\$ Neryl alcohol \$\$ Geranyl Alcohol \$\$ cis-3,7-Dimethyl-2,6-octadien-1-ol

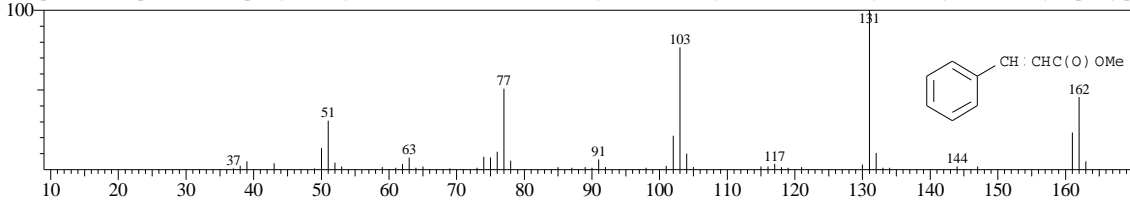


<< Target >>

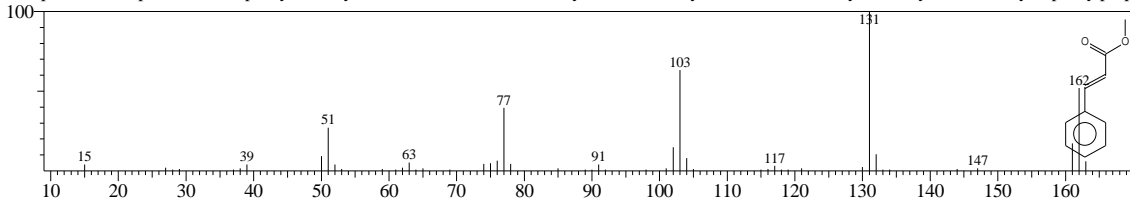
Line#:22 R.Time:18.100(Scan#:1813) MassPeaks:67
RawMode:Single 18.100(1813) BasePeak:131.10(497147)
BG Mode:18.217(1827) Group 1 - Event 1



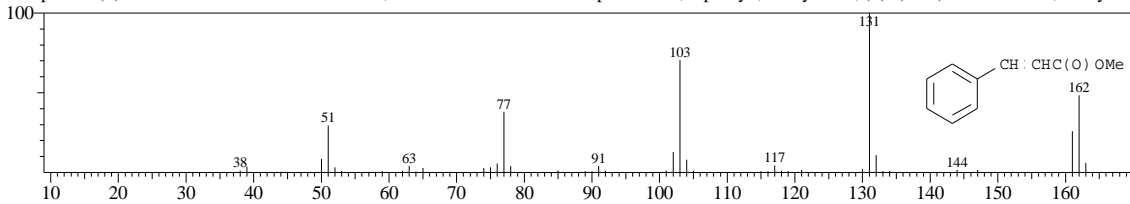
Hit#:1 Entry:51499 Library:WILEY7.LIB
SI:97 Formula:C10 H10 O2 CAS:103-26-4 MolWeight:162 RetIndex:0
CompName:2-Propenoic acid, 3-phenyl-, methyl ester (CAS) Cinnamic acid methyl ester \$\$ Methyl cinnamate \$\$ Methyl cinnamylate \$\$ Methyl 3-phenylpr



Hit#:2 Entry:20152 Library:NIST147.LIB
SI:96 Formula:C10H10O2 CAS:103-26-4 MolWeight:162 RetIndex:0
CompName:2-Propenoic acid, 3-phenyl-, methyl ester \$\$ Cinnamic acid, methyl ester \$\$ Methyl cinnamate \$\$ Methyl cinnamylate \$\$ Methyl 3-phenylprop

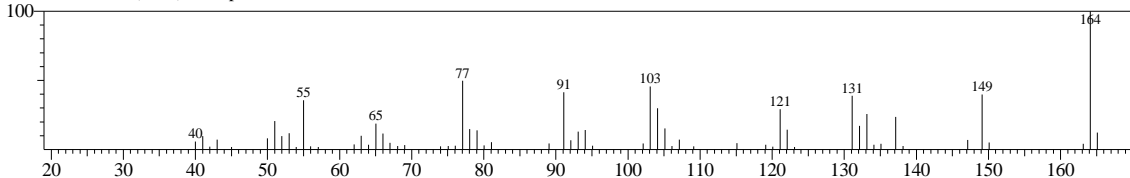


Hit#:3 Entry:51500 Library:WILEY7.LIB
SI:96 Formula:C10 H10 O2 CAS:19713-73-6 MolWeight:162 RetIndex:0
CompName:(Z)-3-PHENYL-2-PROPENOIC ACID, METHYL ESTER \$\$ 2-Propenoic acid, 3-phenyl-, methyl ester, (Z)- (CAS) Cinnamic acid, methyl est

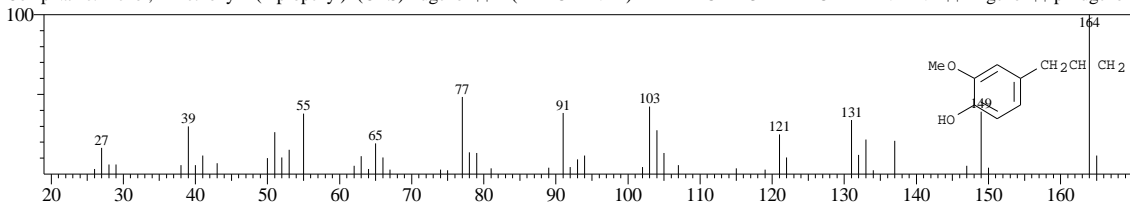


<< Target >>

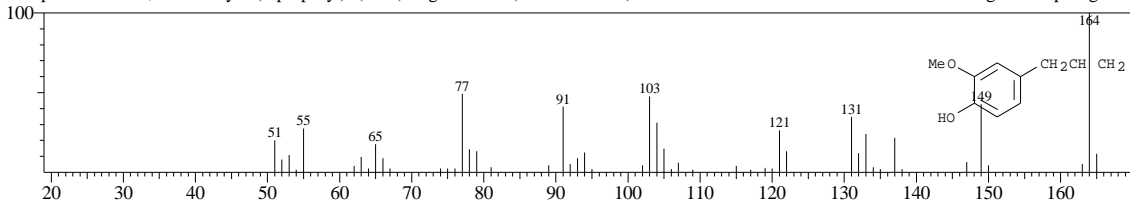
Line#:23 R.Time:19.592(Scan#:1992) MassPeaks:62
RawMode:Single 19.592(1992) BasePeak:164.10(53503)
BG Mode:19.683(2003) Group 1 - Event 1



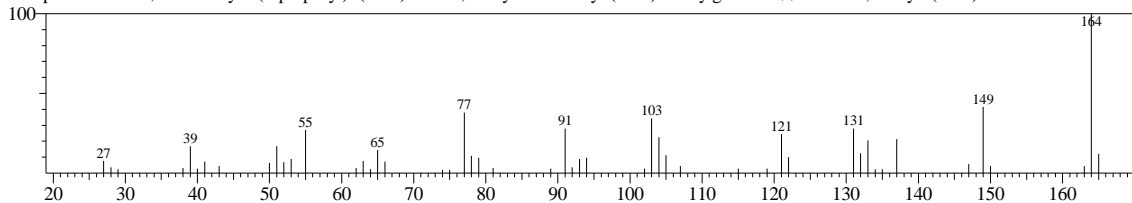
Hit#:1 Entry:53660 Library:WILEY7.LIB
SI:95 Formula:C10 H12 O2 CAS:97-53-0 MolWeight:164 RetIndex:0
CompName:Phenol, 2-methoxy-4-(2-propenyl)- (CAS) Eugenol \$\$ 1-(2-PROPENYL)-4-HYDROXY-3-METHOXYBENZENE \$\$ Engenol \$\$ p-Eugenol \$



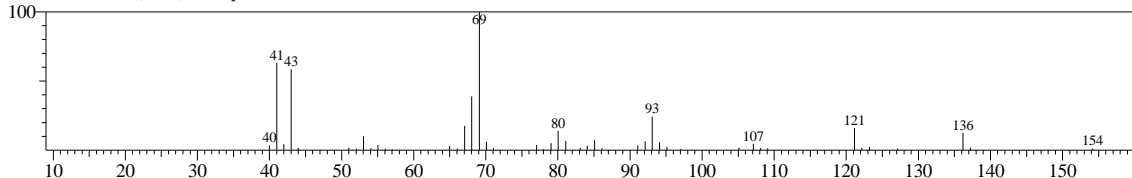
Hit#:2 Entry:53667 Library:WILEY7.LIB
SI:94 Formula:C10 H12 O2 CAS:97-53-0 MolWeight:164 RetIndex:0
CompName:Phenol, 2-methoxy-4-(2-propenyl)- (CAS) Eugenol \$\$ 1-(2-PROPENYL)-4-HYDROXY-3-METHOXYBENZENE \$\$ Engenol \$\$ p-Eugenol \$



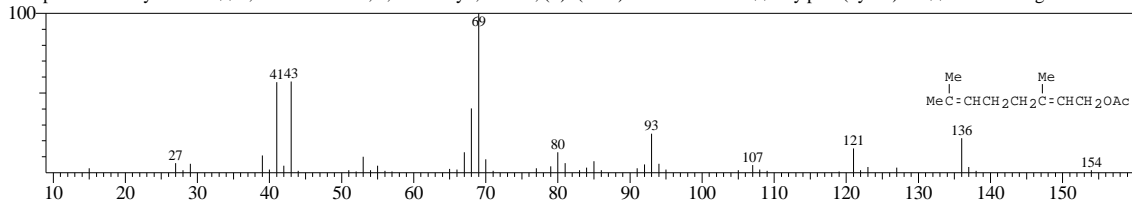
Hit#:3 Entry:52834 Library:WILEY7.LIB
 SI:92 Formula:C10 H12 O2 CAS:1941-12-4 MolWeight:164 RetIndex:0
 CompName:Phenol, 2-methoxy-3-(2-propenyl)- (CAS) Phenol, 3-allyl-2-methoxy- (CAS) 3-Allylguaiacol \$\$ Guaiacol, 3-allyl- (CAS)



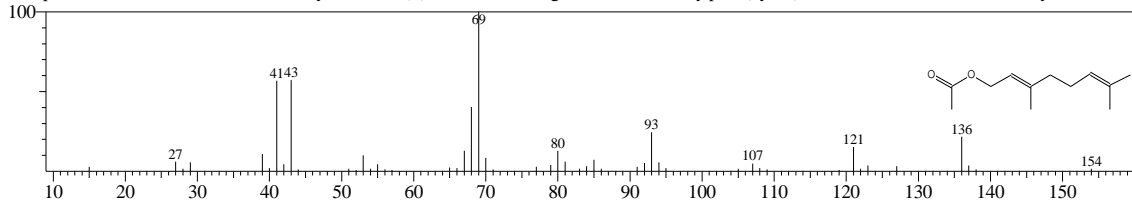
<< Target >>
 Line#:24 R.Time:20.158(Scan#:2060) MassPeaks:46
 RawMode:Single 20.158(2060) BasePeak:69.10(136707)
 BG Mode:20.208(2066) Group 1 - Event 1



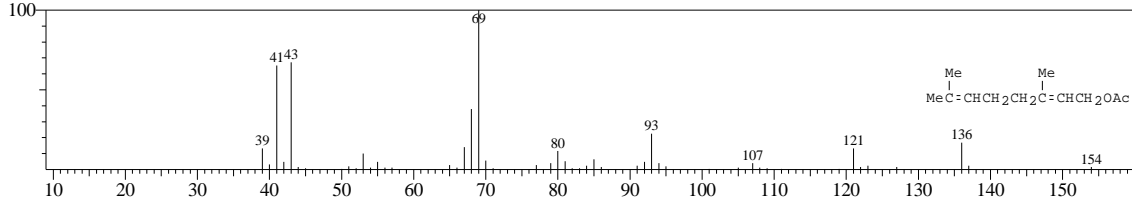
Hit#:1 Entry:91011 Library:WILEY7.LIB
 SI:97 Formula:C12 H20 O2 CAS:105-87-3 MolWeight:196 RetIndex:0
 CompName:Geranyl acetate \$\$ 2,6-Octadien-1-ol, 3,7-dimethyl-, acetate, (E)- (CAS) Geraniol acetate \$\$ Bay pine (oyster) oil \$\$ Acetic acid geraniol ester \$



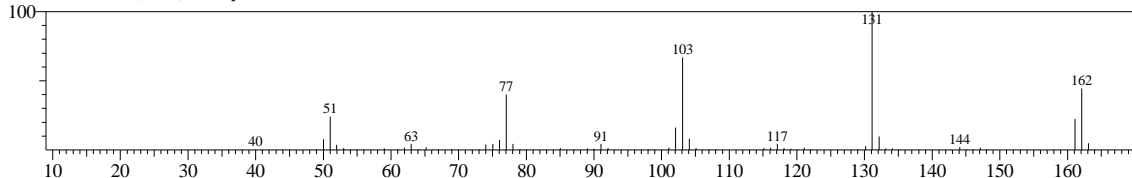
Hit#:2 Entry:37974 Library:NIST147.LIB
 SI:97 Formula:C12H20O2 CAS:105-87-3 MolWeight:196 RetIndex:0
 CompName:2,6-Octadien-1-ol, 3,7-dimethyl-, acetate, (E)- \$\$ Acetic acid, geraniol ester \$\$ Bay pine (oyster) oil \$\$ Geraniol acetate \$\$ Geranyl acetate \$\$ t



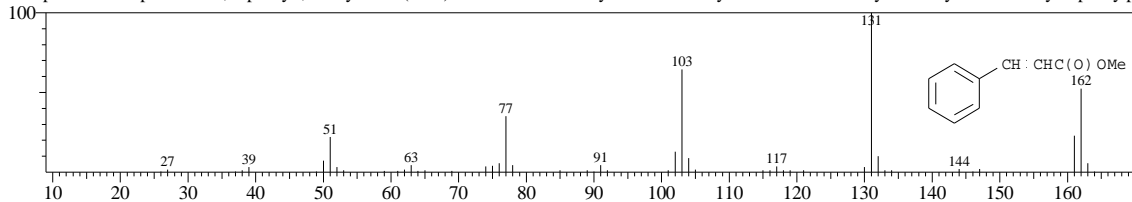
Hit#:3 Entry:91014 Library:WILEY7.LIB
 SI:97 Formula:C12 H20 O2 CAS:105-87-3 MolWeight:196 RetIndex:0
 CompName:Geranyl acetate \$\$ 2,6-Octadien-1-ol, 3,7-dimethyl-, acetate, (E)- (CAS) Geraniol acetate \$\$ Bay pine (oyster) oil \$\$ Acetic acid geraniol ester \$



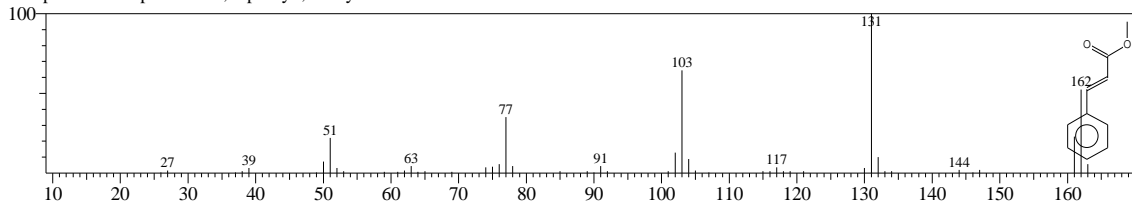
<< Target >>
 Line#:25 R.Time:20.325(Scan#:2080) MassPeaks:88
 RawMode:Single 20.325(2080) BasePeak:131.10(3132118)
 BG Mode:20.408(2090) Group 1 - Event 1



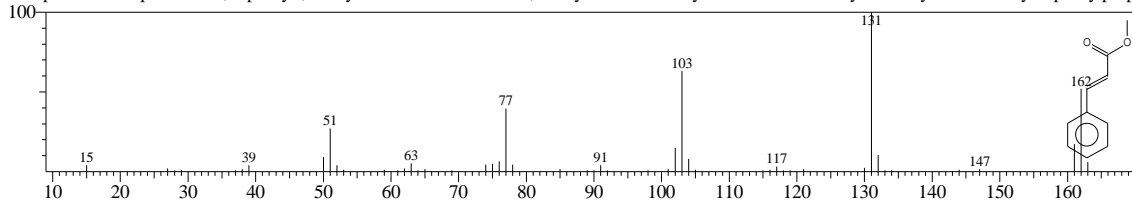
Hit#:1 Entry:51497 Library:WILEY7.LIB
 SI:98 Formula:C10 H10 O2 CAS:103-26-4 MolWeight:162 RetIndex:0
 CompName:2-Propenoic acid, 3-phenyl-, methyl ester (CAS) Cinnamic acid methyl ester \$\$ Methyl cinnamate \$\$ Methyl cinnamylate \$\$ Methyl 3-phenylpr



Hit#:2 Entry:10628 Library:NIST27.LIB
SI:98 Formula:C10H10O2 CAS:103-26-4 MolWeight:162 RetIndex:0
CompName:2-Propenoic acid, 3-phenyl-, methyl ester

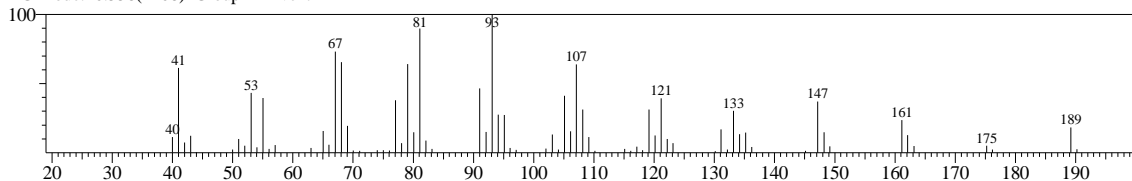


Hit#:3 Entry:20152 Library:NIST147.LIB
SI:98 Formula:C10H10O2 CAS:103-26-4 MolWeight:162 RetIndex:0
CompName:2-Propenoic acid, 3-phenyl-, methyl ester \$\$ Cinnamic acid, methyl ester \$\$ Methyl cinnamate \$\$ Methyl cinnamylate \$\$ Methyl 3-phenylprop

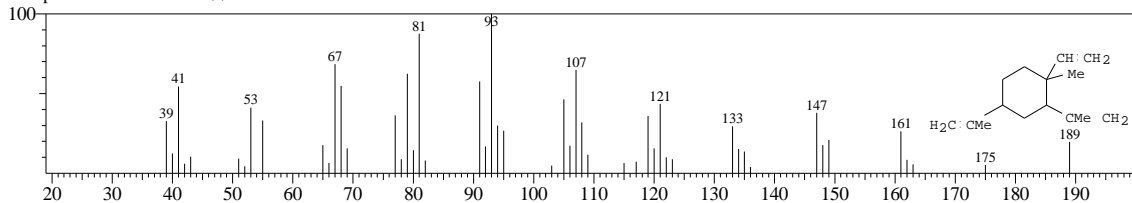


<< Target >>

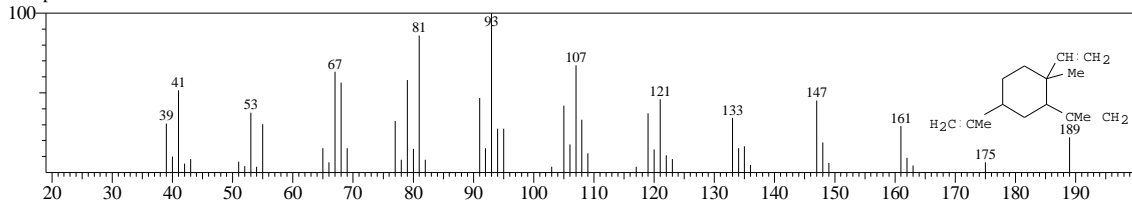
Line#:26 R.Time:20.483(Scan#:2099) MassPeaks:74
RawMode:Single 20.483(2099) BasePeak:93.10(87312)
BG Mode:20.558(2108) Group 1 - Event 1



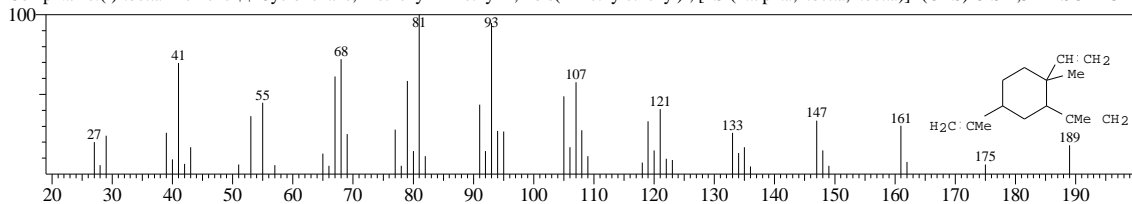
Hit#:1 Entry:101098 Library:WILEY7.LIB
SI:96 Formula:C15 H24 CAS:515-13-9 MolWeight:204 RetIndex:0
CompName:.beta.-elemene \$\$



Hit#:2 Entry:100278 Library:WILEY7.LIB
SI:96 Formula:C15 H24 CAS:515-13-9 MolWeight:204 RetIndex:0
CompName:.BETA. ELEMENE \$\$

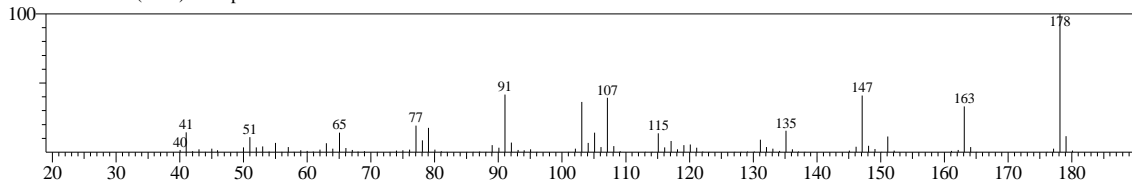


Hit#:3 Entry:100726 Library:WILEY7.LIB
SI:95 Formula:C15 H24 CAS:515-13-9 MolWeight:204 RetIndex:0
CompName:(-)-.beta.-Elemene \$\$ Cyclohexane, 1-ethenyl-1-methyl-2,4-bis(1-methylethenyl)-, [1S-(1.alpha.,2.beta.,4.beta.)]- (CAS) CIS-1,3-DIISOPROPE

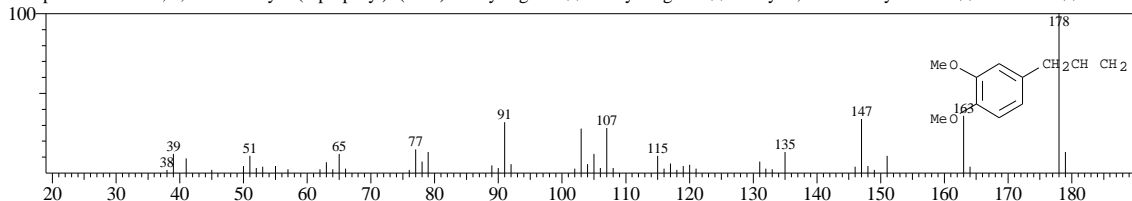


<< Target >>

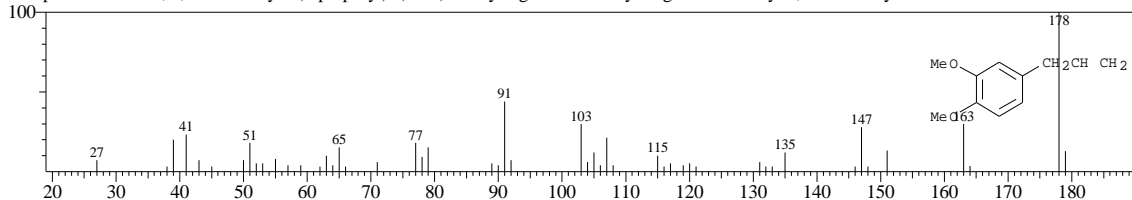
Line#:27 R.Time:20.875(Scan#:2146) MassPeaks:117
RawMode:Single 20.875(2146) BasePeak:178.15(3780126)
BG Mode:20.942(2154) Group 1 - Event 1



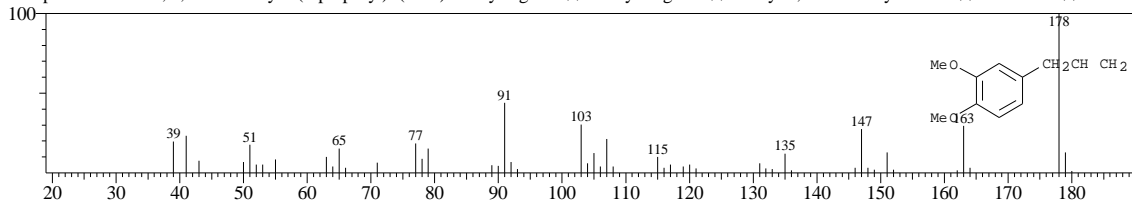
Hit#:1 Entry:69405 Library:WILEY7.LIB
SI:95 Formula:C11 H14 O2 CAS:93-15-2 MolWeight:178 RetIndex:0
CompName:Benzen, 1,2-dimethoxy-4-(2-propenyl)- (CAS) Methyleugenol \$\$ Methyl Eugenol \$\$ 1-Allyl-3,4-dimethoxybenzene \$\$ Ent 21040 \$\$ O-Meth



Hit#:2 Entry:69406 Library:WILEY7.LIB
SI:93 Formula:C11 H14 O2 CAS:93-15-2 MolWeight:178 RetIndex:0
CompName:Benzen, 1,2-dimethoxy-4-(2-propenyl)- (CAS) Methyleugenol \$\$ Methyl Eugenol \$\$ 1-Allyl-3,4-dimethoxybenzene \$\$ Ent 21040 \$\$ O-Meth

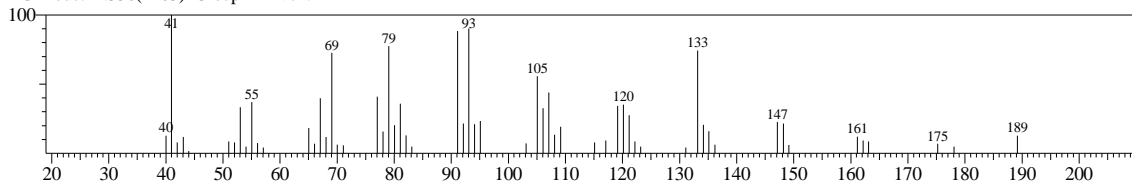


Hit#:3 Entry:69407 Library:WILEY7.LIB
SI:93 Formula:C11 H14 O2 CAS:93-15-2 MolWeight:178 RetIndex:0
CompName:Benzen, 1,2-dimethoxy-4-(2-propenyl)- (CAS) Methyleugenol \$\$ Methyl Eugenol \$\$ 1-Allyl-3,4-dimethoxybenzene \$\$ Ent 21040 \$\$ O-Meth

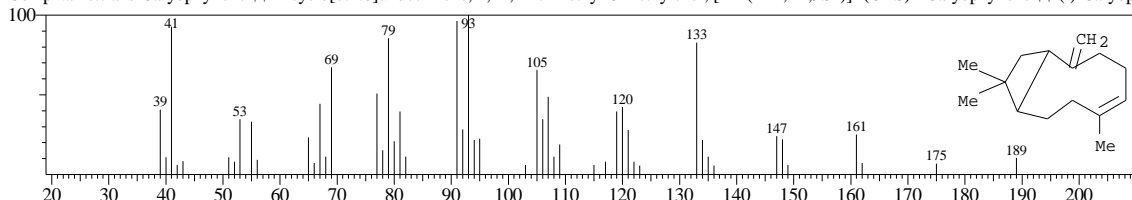


<< Target >>

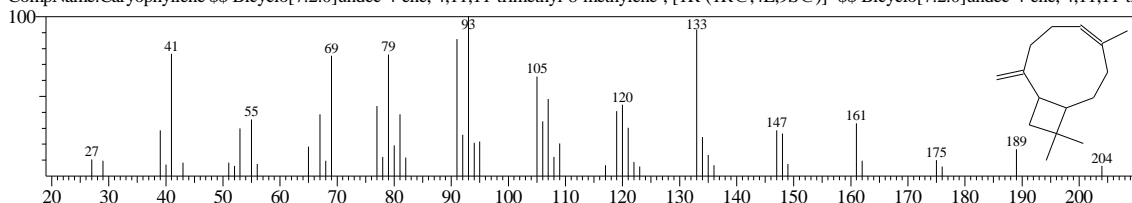
Line#:28 R.Time:21.275(Scan#:2194) MassPeaks:58
RawMode:Single 21.275(2194) BasePeak:41.00(20583)
BG Mode:21.350(2203) Group 1 - Event 1



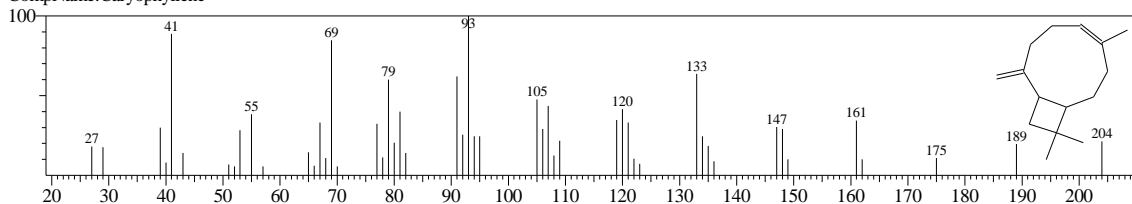
Hit#:1 Entry:100779 Library:WILEY7.LIB
SI:96 Formula:C15 H24 CAS:87-44-5 MolWeight:204 RetIndex:0
CompName:trans-Caryophyllene \$\$ Bicyclo[7.2.0]undec-4-ene, 4,11,11-trimethyl-8-methylene-, [1R-(1R*,4E,9S*)]- (CAS) l-Caryophyllene \$\$ (-)-Caryoph



Hit#:2 Entry:42340 Library:NIST147.LIB
SI:94 Formula:C15H24 CAS:87-44-5 MolWeight:204 RetIndex:0
CompName:Caryophyllene \$\$ Bicyclo[7.2.0]undec-4-ene, 4,11,11-trimethyl-8-methylene-, [1R-(1R@,4E,9S@)]- \$\$ Bicyclo[7.2.0]undec-4-ene, 4,11,11-tri

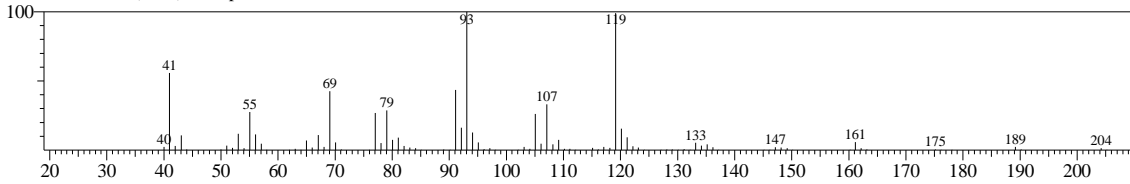


Hit#:3 Entry:16778 Library:NIST27.LIB
SI:93 Formula:C15H24 CAS:87-44-5 MolWeight:204 RetIndex:0
CompName:Caryophyllene

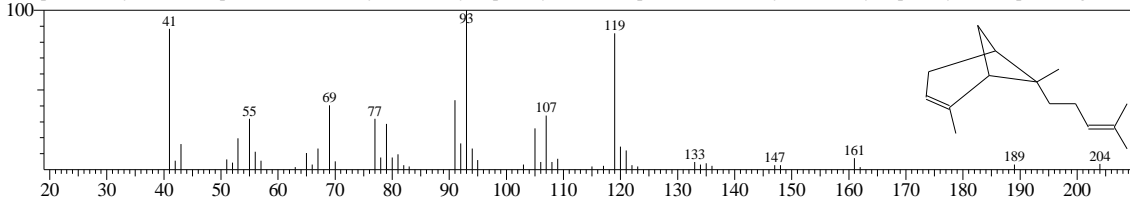


<< Target >>

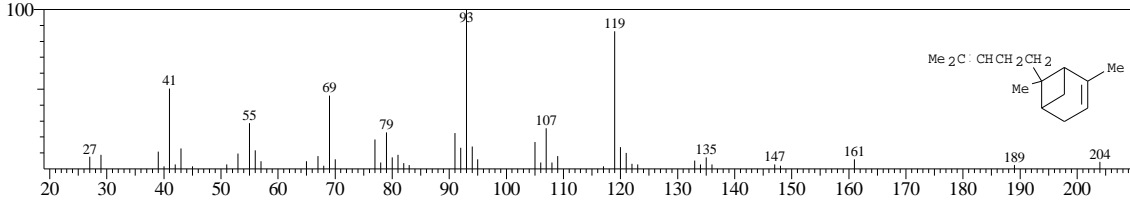
Line#:29 R.Time:21.625(Scan#:2236) MassPeaks:93
RawMode:Single 21.625(2236) BasePeak:93.10(860494)
BG Mode:21.692(2244) Group 1 - Event 1



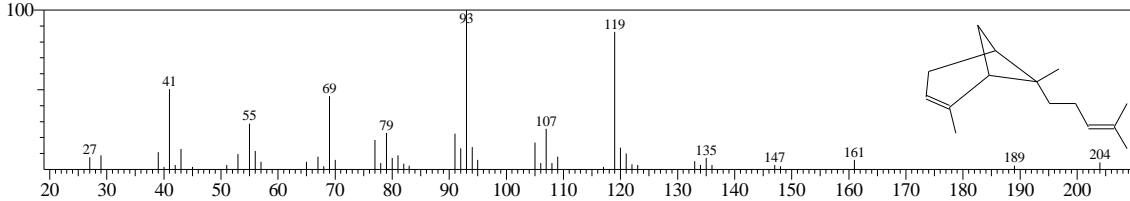
Hit#:1 Entry:42384 Library:NIST147.LIB
SI:96 Formula:C15H24 CAS:17699-05-7 MolWeight:204 RetIndex:0
CompName:Bicyclo[3.1.1]hept-2-ene, 2,6-dimethyl-6-(4-methyl-3-pentenyl)- \$\$ 2-Norpinene, 2,6-dimethyl-6-(4-methyl-3-pentenyl)- \$\$.alpha.-Bergamoten



Hit#:2 Entry:100220 Library:WILEY7.LIB
SI:95 Formula:C15 H24 CAS:17699-05-7 MolWeight:204 RetIndex:0
CompName:.alpha.-Bergamotene \$\$ Bicyclo[3.1.1]hept-2-ene, 2,6-dimethyl-6-(4-methyl-3-pentenyl)- (CAS) 2-Norpinene, 2,6-dimethyl-6-(4-methyl-3-pentenyl)-

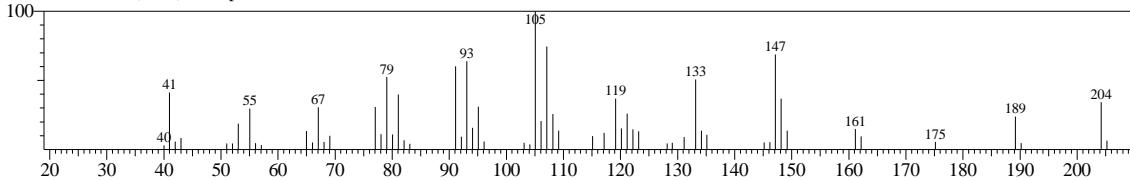


Hit#:3 Entry:16826 Library:NIST27.LIB
SI:95 Formula:C15H24 CAS:17699-05-7 MolWeight:204 RetIndex:0
CompName:Bicyclo[3.1.1]hept-2-ene, 2,6-dimethyl-6-(4-methyl-3-pentenyl)-

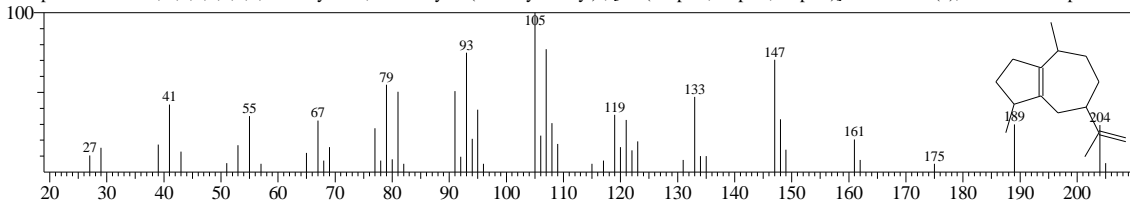


<< Target >>

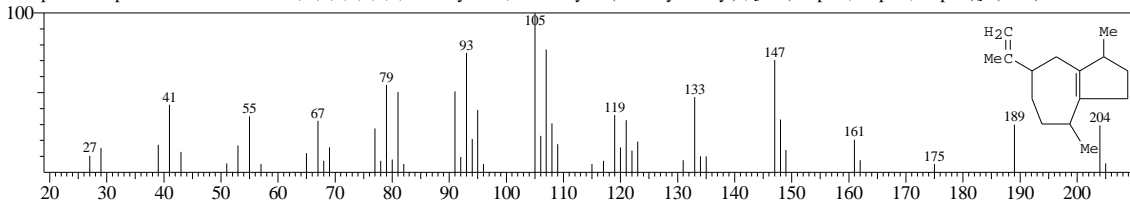
Line#:30 R.Time:21.725(Scan#:2248) MassPeaks:61
RawMode:Single 21.725(2248) BasePeak:105.10(26352)
BG Mode:21.758(2252) Group 1 - Event 1



Hit#:1 Entry:42320 Library:NIST147.LIB
SI:95 Formula:C15H24 CAS:3691-12-1 MolWeight:204 RetIndex:0
CompName:Azulene, 1,2,3,4,5,6,7,8-octahydro-1,4-dimethyl-7-(1-methylethenyl)-, [1S-(1.alpha.,4.alpha.,7.alpha.)]- \$\$ Guaia-1(5),11-diene \$\$.alpha.-Gua



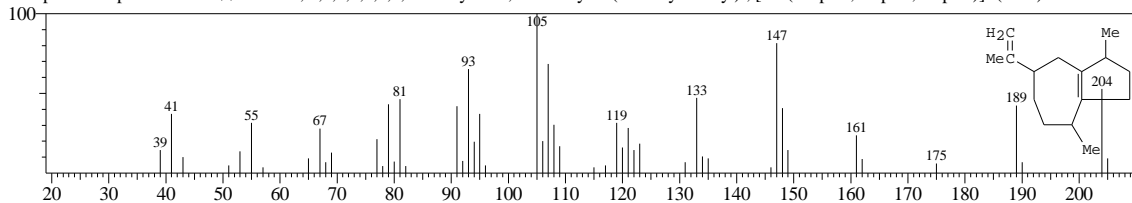
Hit#:2 Entry:100814 Library:WILEY7.LIB
SI:95 Formula:C15 H24 CAS:3691-12-1 MolWeight:204 RetIndex:0
CompName:.alpha.-Guaieene \$\$ Azulene, 1,2,3,4,5,6,7,8-octahydro-1,4-dimethyl-7-(1-methylethenyl)-, [1S-(1.alpha.,4.alpha.,7.alpha.)]- (CAS) .ALPHA.-GU



Hit#:3 Entry:100815 Library:WILEY7.LIB

SI:94 Formula:C15 H24 CAS:3691-12-1 MolWeight:204 RetIndex:0

CompName:.alpha.-Guaiene \$\$ Azulene, 1,2,3,4,5,6,7,8-octahydro-1,4-dimethyl-7-(1-methylethenyl)-, [1S-(1.alpha.,4.alpha.,7.alpha.)]- (CAS) .ALPHA.-GI

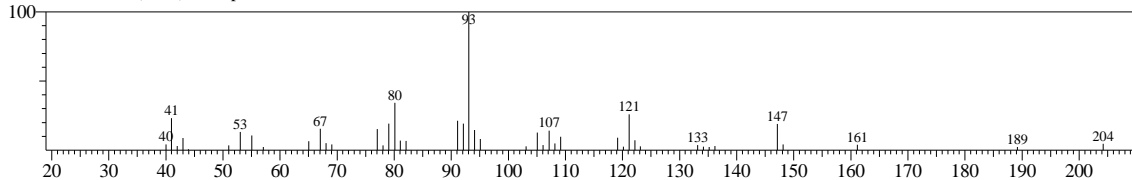


<< Target >>

Line#:31 R.Time:22.183(Scan#:2303) MassPeaks:44

RawMode:Single 22.183(2303) BasePeak:93.10(48992)

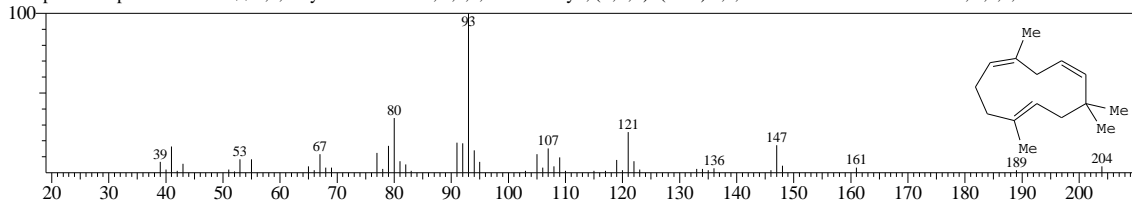
BG Mode:22.275(2314) Group 1 - Event 1



Hit#:1 Entry:100734 Library:WILEY7.LIB

SI:96 Formula:C15 H24 CAS:6753-98-6 MolWeight:204 RetIndex:0

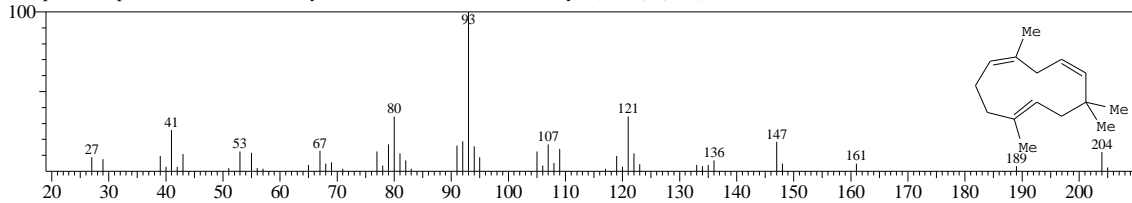
CompName:.alpha.-Humulene \$\$ 1,4,8-Cycloundecatriene, 2,6,6,9-tetramethyl-, (E,E,E)- (CAS) 4,7,10-CYCLOUNDECATRIENE, 1,1,4,8-TETRAMETH



Hit#:2 Entry:100735 Library:WILEY7.LIB

SI:95 Formula:C15 H24 CAS:6753-98-6 MolWeight:204 RetIndex:0

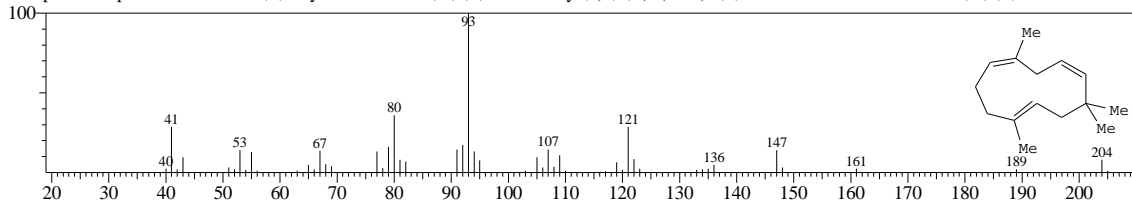
CompName:.alpha.-Humulene \$\$ 1,4,8-Cycloundecatriene, 2,6,6,9-tetramethyl-, (E,E,E)- (CAS) 4,7,10-CYCLOUNDECATRIENE, 1,1,4,8-TETRAMETH



Hit#:3 Entry:100739 Library:WILEY7.LIB

SI:95 Formula:C15 H24 CAS:6753-98-6 MolWeight:204 RetIndex:0

CompName:.alpha.-Humulene \$\$ 1,4,8-Cycloundecatriene, 2,6,6,9-tetramethyl-, (E,E,E)- (CAS) 4,7,10-CYCLOUNDECATRIENE, 1,1,4,8-TETRAMETH

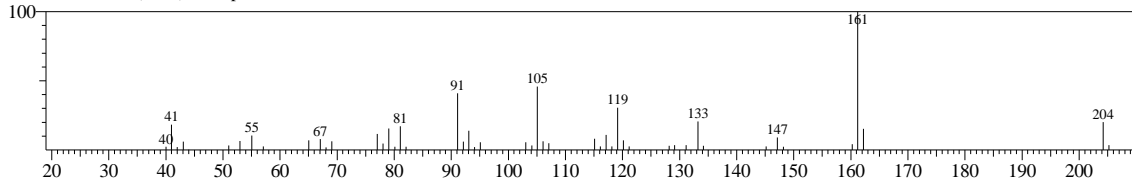


<< Target >>

Line#:32 R.Time:22.425(Scan#:2332) MassPeaks:49

RawMode:Single 22.425(2332) BasePeak:161.20(53926)

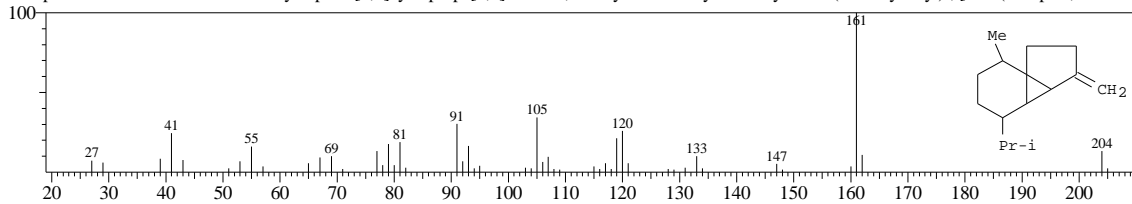
BG Mode:22.483(2339) Group 1 - Event 1



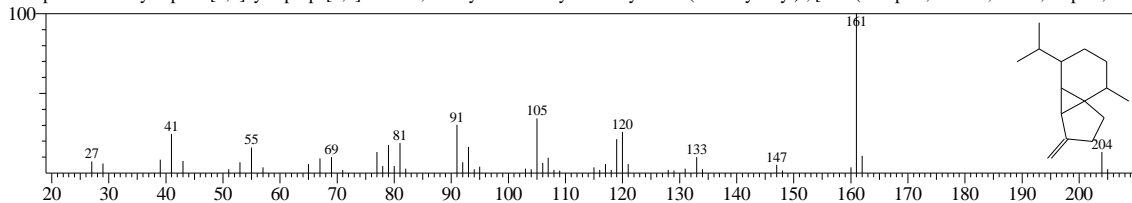
Hit#:1 Entry:101072 Library:WILEY7.LIB

SI:92 Formula:C15 H24 CAS:13744-15-5 MolWeight:204 RetIndex:0

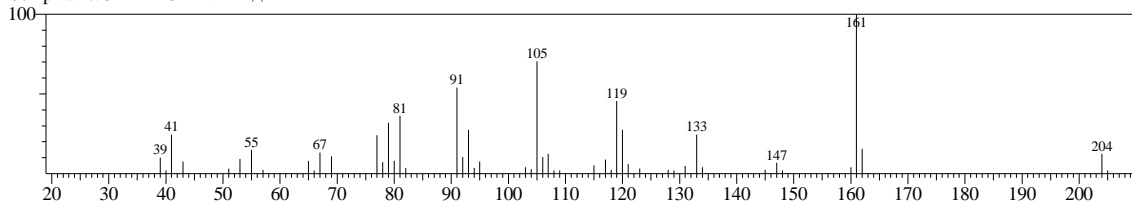
CompName:.beta.-Cubebene \$\$ 1H-Cyclopenta[1,3]cyclopropa[1,2]benzene, octahydro-7-methyl-3-methylene-4-(1-methylethyl)-, [3aS-(3a.alpha.,3b.beta.,4



Hit#:2 Entry:42266 Library:NIST147.LIB
SI:92 Formula:C15H24 CAS:13744-15-5 MolWeight:204 RetIndex:0
CompName:1H-Cyclopenta[1,3]cyclopropa[1,2]benzene, octahydro-7-methyl-3-methylene-4-(1-methylethyl)-, [3aS-(3a.alpha.,3b.beta.,4.beta.,7.alpha.,7aS(

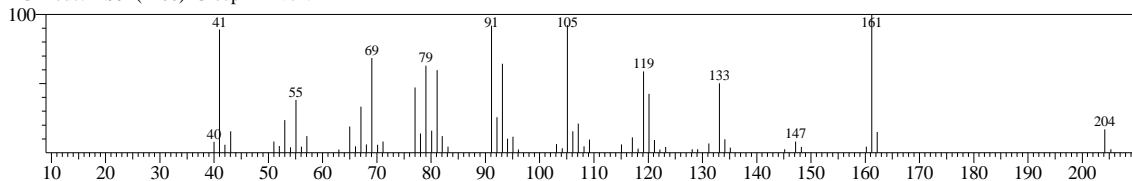


Hit#:3 Entry:100272 Library:WILEY7.LIB
SI:90 Formula:C15 H24 CAS:23986-74-5 MolWeight:204 RetIndex:0
CompName:GERMACRENE-D \$\$

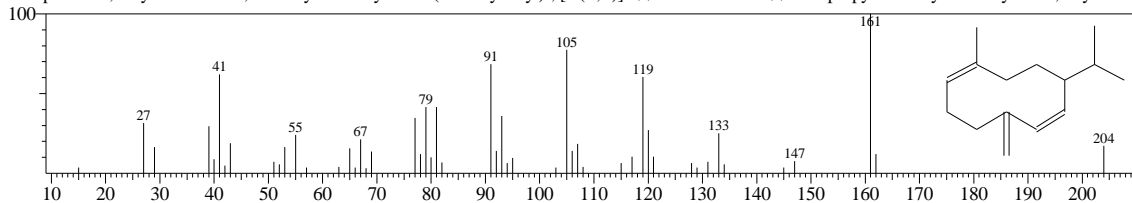


<< Target >>

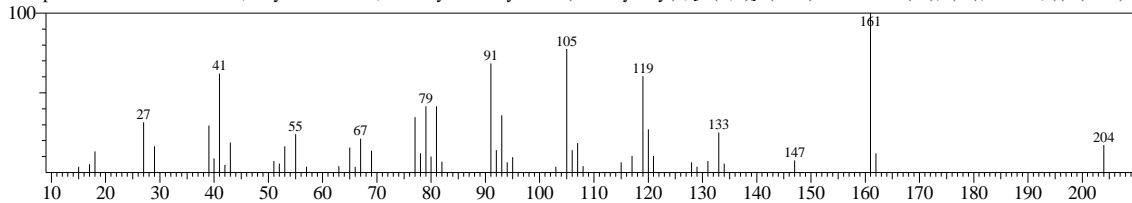
Line#:33 R.Time:22.908(Scan#:2390) MassPeaks:62
RawMode:Single 22.908(2390) BasePeak:161.20(43883)
BG Mode:22.992(2400) Group 1 - Event 1



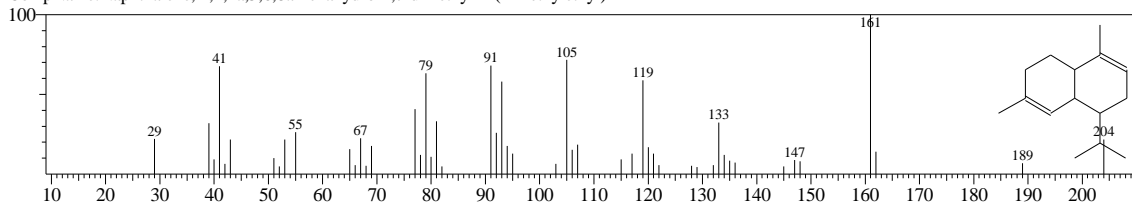
Hit#:1 Entry:42285 Library:NIST147.LIB
SI:89 Formula:C15H24 CAS:23986-74-5 MolWeight:204 RetIndex:0
CompName:1,6-Cyclodecadiene, 1-methyl-5-methylene-8-(1-methylethyl)-, [s-(E,E)]- \$\$ Germacrene D \$\$ 8-Isopropyl-1-methyl-5-methylene-1,6-cyclodec



Hit#:2 Entry:101085 Library:WILEY7.LIB
SI:89 Formula:C15 H24 CAS:23986-74-5 MolWeight:204 RetIndex:0
CompName:Germacrene D \$\$ 1,6-Cyclodecadiene, 1-methyl-5-methylene-8-(1-methylethyl)-, [s-(E,E)]- (CAS) Germacra-1(10),4(15),5-triene, (-) (CAS) (-

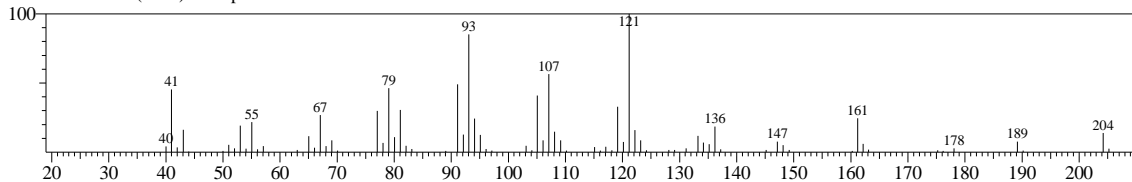


Hit#:3 Entry:16789 Library:NIST27.LIB
SI:89 Formula:C15H24 CAS:483-75-0 MolWeight:204 RetIndex:0
CompName:Naphthalene, 1,2,4a,5,6,8a-hexahydro-4,7-dimethyl-1-(1-methylethyl)-



<< Target >>

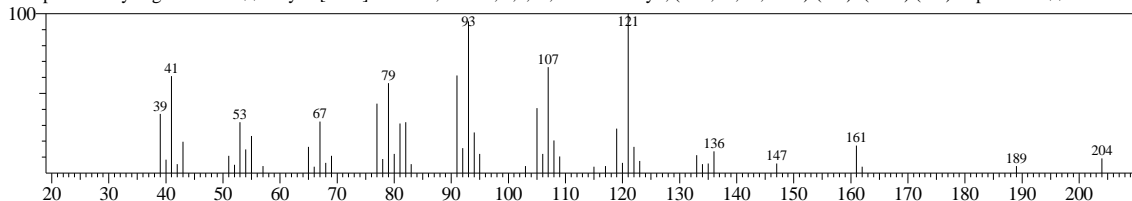
Line#:34 R.Time:23.300(Scan#:2437) MassPeaks:76
RawMode:Single 23.300(2437) BasePeak:121.15(124457)
BG Mode:23.400(2449) Group 1 - Event 1



Hit#:1 Entry:101112 Library:WILEY7.LIB

SI:93 Formula:C15 H24 CAS:100762-46-7 MolWeight:204 RetIndex:0

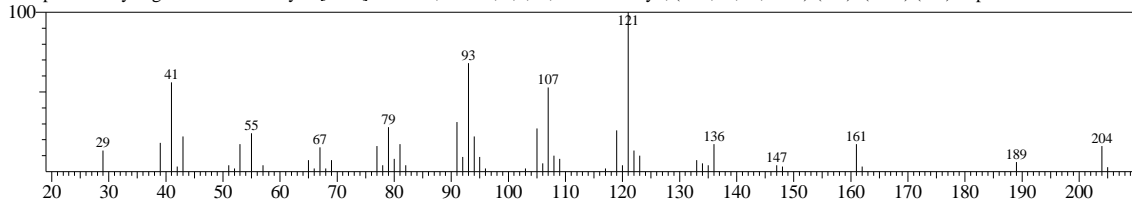
CompName:bicyclogermacrene \$\$ Bicyclo[8.1.0]undeca-2,6-diene, 3,7,11,11-tetramethyl-, (1R*,2Z,6E,10R*)-(+)- (CAS) (+)-Lepidozene \$\$



Hit#:2 Entry:101113 Library:WILEY7.LIB

SI:92 Formula:C15 H24 CAS:100762-46-7 MolWeight:204 RetIndex:0

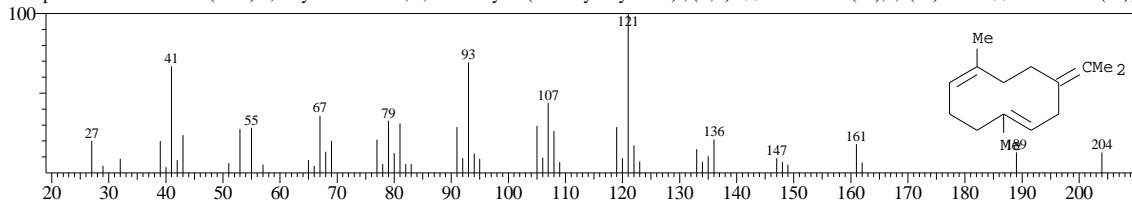
CompName:bicyclogermacrene \$\$ Bicyclo[8.1.0]undeca-2,6-diene, 3,7,11,11-tetramethyl-, (1R*,2Z,6E,10R*)-(+)- (CAS) (+)-Lepidozene \$\$



Hit#:3 Entry:100752 Library:WILEY7.LIB

SI:92 Formula:C15 H24 CAS:15423-57-1 MolWeight:204 RetIndex:0

CompName:Germacrene B (CAS) 1,5-Cyclodecadiene, 1,5-dimethyl-8-(1-methylethylidene)-, (E,E)- \$\$ Germacrene-1(10),4(7)(11)-triene \$\$ Germacrene-1(10),4(7)(11)-triene

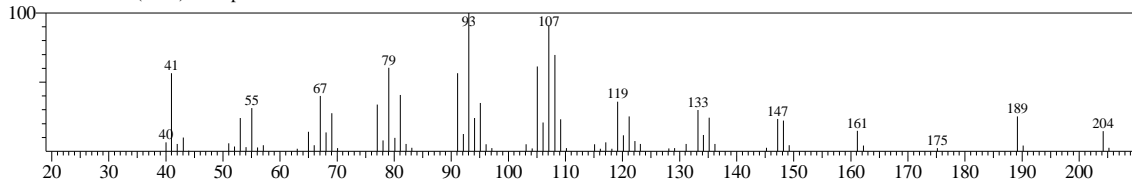


<< Target >>

Line#:35 R.Time:23.508(Scan#:2462) MassPeaks:68

RawMode:Single 23.508(2462) BasePeak:93.10(62343)

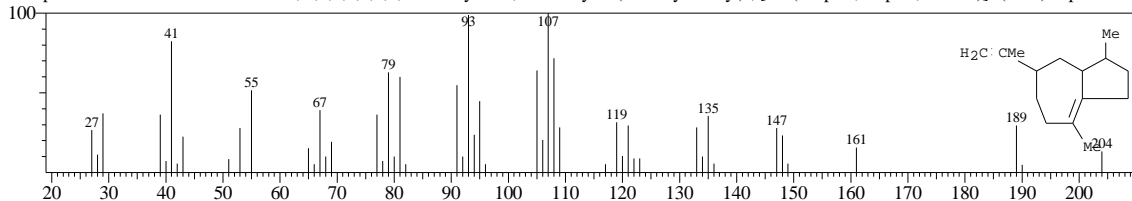
BG Mode:23.633(2477) Group 1 - Event 1



Hit#:1 Entry:100822 Library:WILEY7.LIB

SI:96 Formula:C15 H24 CAS:3691-11-0 MolWeight:204 RetIndex:0

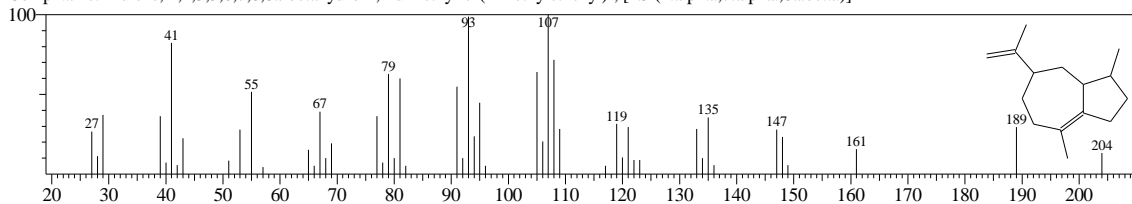
CompName:delta-Guaiene \$\$ Azulene, 1,2,3,5,6,7,8,8a-octahydro-1,4-dimethyl-7-(1-methylethenyl)-, [1S-(1.alpha.,7.alpha.,8a.beta.)]- (CAS) .alpha.-Buln



Hit#:2 Entry:16741 Library:NIST27.LIB

SI:96 Formula:C15H24 CAS:3691-11-0 MolWeight:204 RetIndex:0

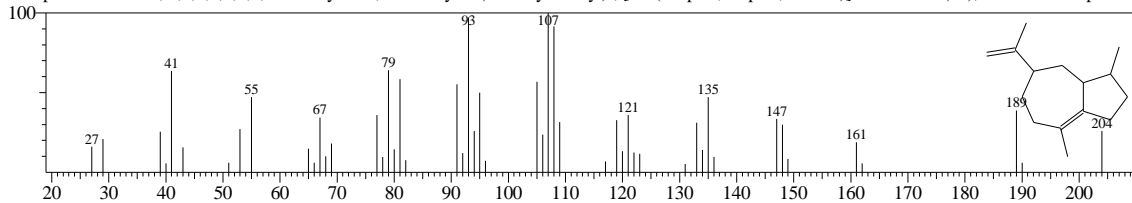
CompName:Azulene, 1,2,3,5,6,7,8,8a-octahydro-1,4-dimethyl-7-(1-methylethenyl)-, [1S-(1.alpha.,7.alpha.,8a.beta.)]-



Hit#:3 Entry:42310 Library:NIST147.LIB

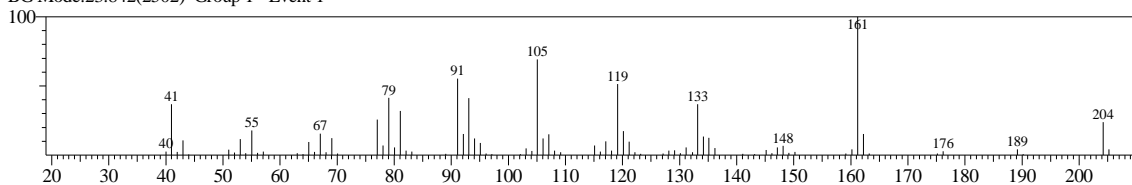
SI:94 Formula:C15H24 CAS:3691-11-0 MolWeight:204 RetIndex:0

CompName:Azulene, 1,2,3,5,6,7,8,8a-octahydro-1,4-dimethyl-7-(1-methylethenyl)-, [1S-(1.alpha.,7.alpha.,8a.beta.)]- \$\$ Guaia-1(10),11-diene \$\$.alpha.-Bu

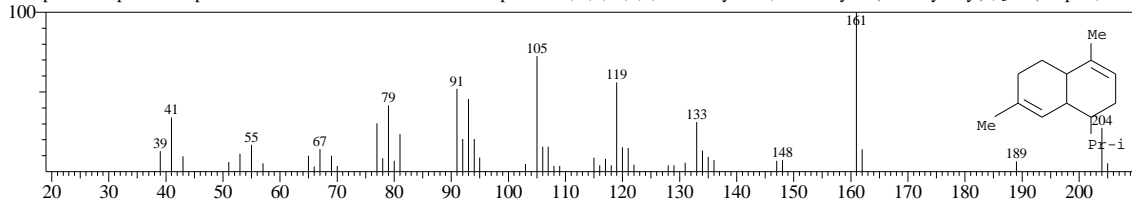


<< Target >>

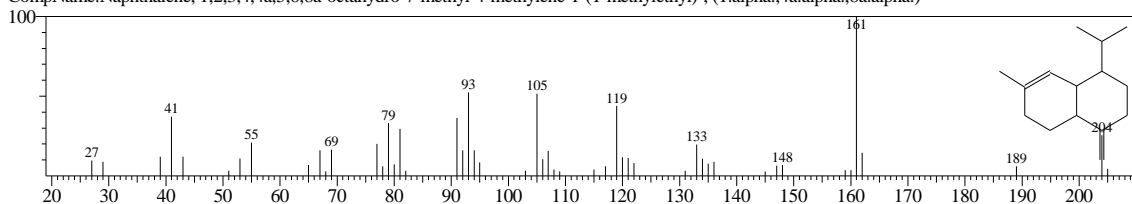
Line#:36 R.Time:23.742(Scan#:2490) MassPeaks:81
RawMode:Single 23.742(2490) BasePeak:161.20(173753)
BG Mode:23.842(2502) Group 1 - Event 1



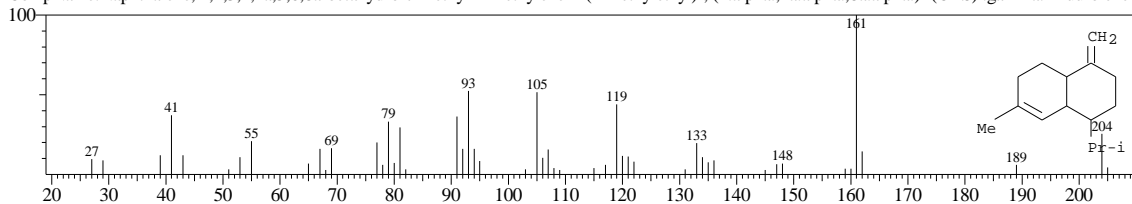
Hit#:1 Entry:100954 Library:WILEY7.LIB
SI:95 Formula:C15 H24 CAS:23515-88-0 MolWeight:204 RetIndex:0
CompName:.alpha.-Amorphene \$.ALPHA. AMORPHENE \$\$ Naphthalene, 1,2,4a,5,6,8a-hexahydro-4,7-dimethyl-1-(1-methylethyl)-, [1S-(1.alpha.,4a.beta



Hit#:2 Entry:16748 Library:NIST27.LIB
SI:93 Formula:C15H24 CAS:30021-74-0 MolWeight:204 RetIndex:0
CompName:Naphthalene, 1,2,3,4,4a,5,6,8a-octahydro-7-methyl-4-methylene-1-(1-methylethyl)-, (1.alpha.,4a.alpha.,8a.alpha.)-

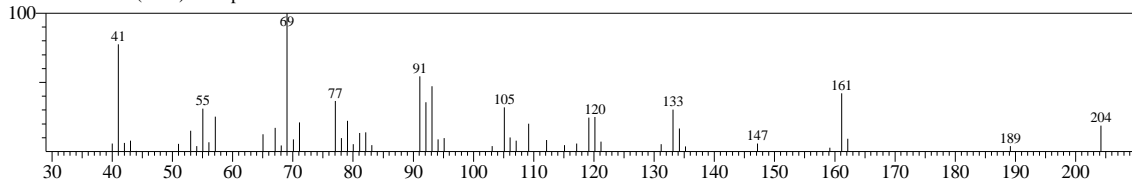


Hit#:3 Entry:100949 Library:WILEY7.LIB
SI:93 Formula:C15 H24 CAS:30021-74-0 MolWeight:204 RetIndex:0
CompName:Naphthalene, 1,2,3,4,4a,5,6,8a-octahydro-7-methyl-4-methylene-1-(1-methylethyl)-, (1.alpha.,4a.alpha.,8a.alpha.)- (CAS) .gamma.-Murolene \$

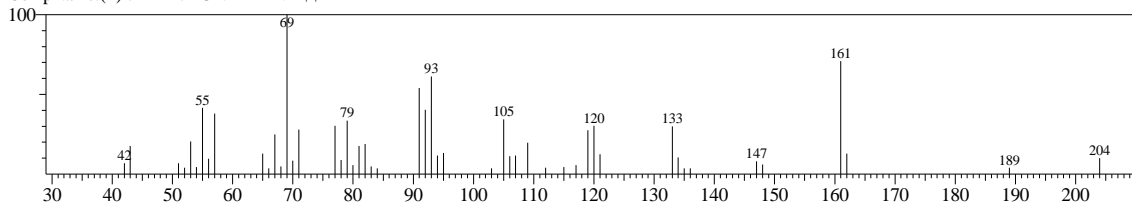


<< Target >>

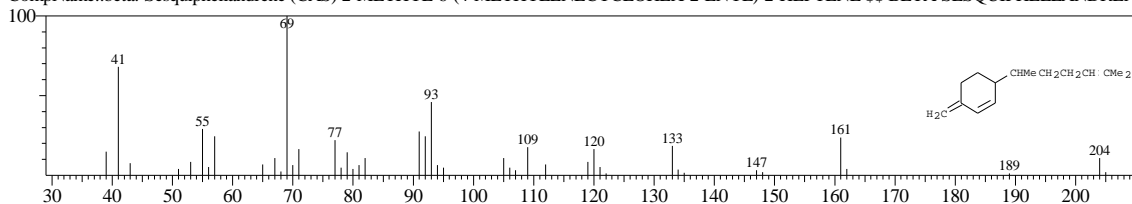
Line#:37 R.Time:23.917(Scan#:2511) MassPeaks:50
RawMode:Single 23.917(2511) BasePeak:69.05(26963)
BG Mode:24.008(2522) Group 1 - Event 1



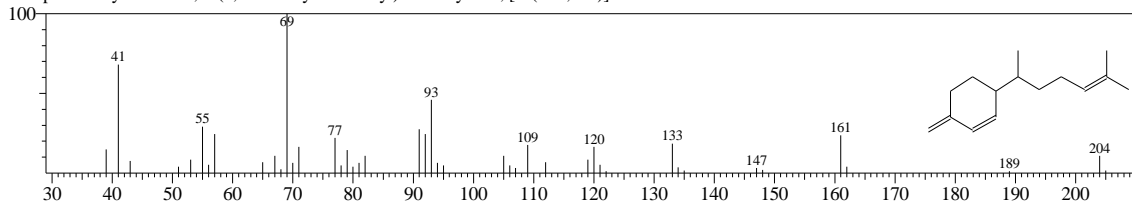
Hit#:1 Entry:100290 Library:WILEY7.LIB
SI:89 Formula:C15 H24 CAS:79120-98-2 MolWeight:204 RetIndex:0
CompName:(+)-.BETA.-FUNEBRENE \$\$



Hit#:2 Entry:100705 Library:WILEY7.LIB
SI:88 Formula:C15 H24 CAS:20307-83-9 MolWeight:204 RetIndex:0
CompName:.beta.-Sesquiphellandrene (CAS) 2-METHYL-6-(4-METHYLENOCYCLOHEX-2-ENYL)-2-HEPTENE \$\$ BETA-SESQUIPELLANDRENI

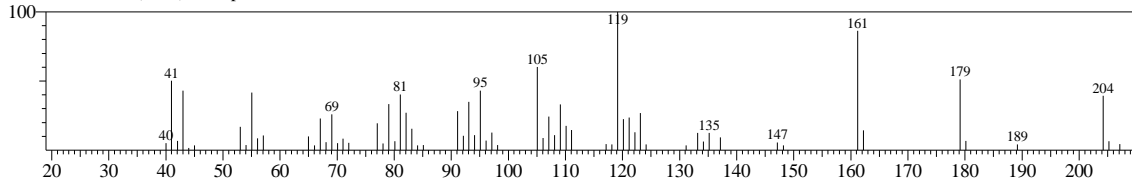


Hit#:3 Entry:16766 Library:NIST27.LIB
SI:88 Formula:C15H24 CAS:20307-83-9 MolWeight:204 RetIndex:0
CompName:Cyclohexene, 3-(1,5-dimethyl-4-hexenyl)-6-methylene-, [S-(R@,S@)]-

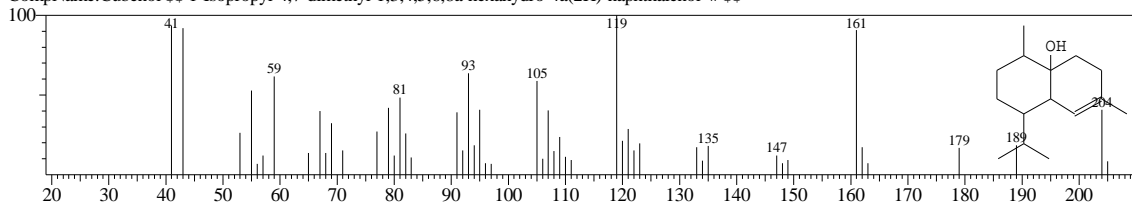


<< Target >>

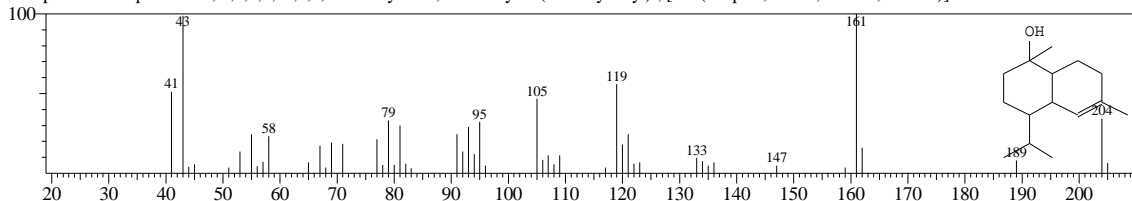
Line#:38 R.Time:26.283(Scan#:2795) MassPeaks:66
RawMode:Single 26.283(2795) BasePeak:119.15(29914)
BG Mode:26.383(2807) Group 1 - Event 1



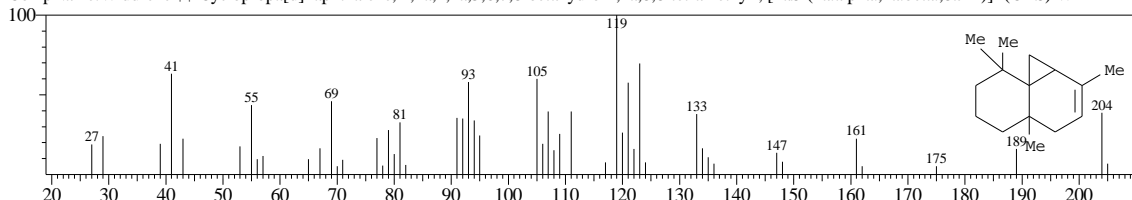
Hit#:1 Entry:52532 Library:NIST147.LIB
SI:88 Formula:C15H26O CAS:21284-22-0 MolWeight:222 RetIndex:0
CompName:Cubenol \$\$ 1-Isopropyl-4,7-dimethyl-1,3,4,5,6,8a-hexahydro-4a(2H)-naphthalenol # \$\$



Hit#:2 Entry:18678 Library:NIST27.LIB
SI:82 Formula:C15H26O CAS:19435-97-3 MolWeight:222 RetIndex:0
CompName:1-Naphthalenol, 1,2,3,4,4a,7,8,8a-octahydro-1,6-dimethyl-4-(1-methylethyl)-, [1R-(1.alpha.,4.beta.,4a.beta.,8a.beta.)]-

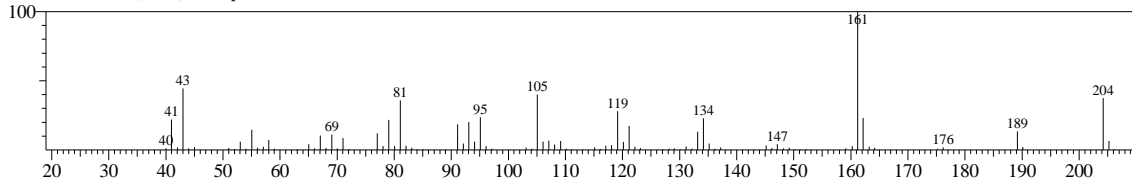


Hit#:3 Entry:101036 Library:WILEY7.LIB
SI:82 Formula:C15H24 CAS:470-40-6 MolWeight:204 RetIndex:0
CompName:Widdrene \$\$ Cyclopropa[d]naphthalene, 1,1a,4,4a,5,6,7,8-octahydro-2,4a,8,8-tetramethyl-, [1aS-(1a.alpha.,4a.beta.,8aR*)]- (CAS) WIDDRENE

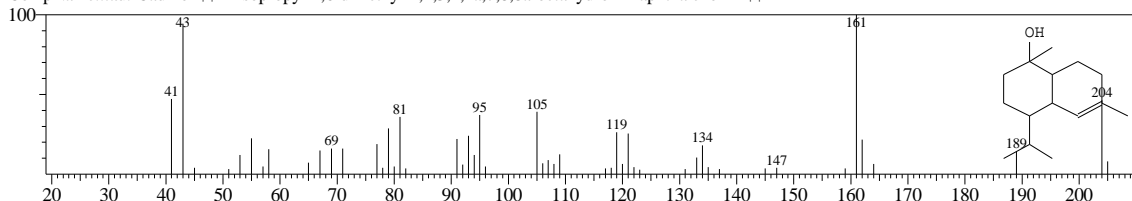


<< Target >>

Line#:39 R.Time:26.908(Scan#:2870) MassPeaks:99
RawMode:Single 26.908(2870) BasePeak:161.20(442567)
BG Mode:27.075(2890) Group 1 - Event 1



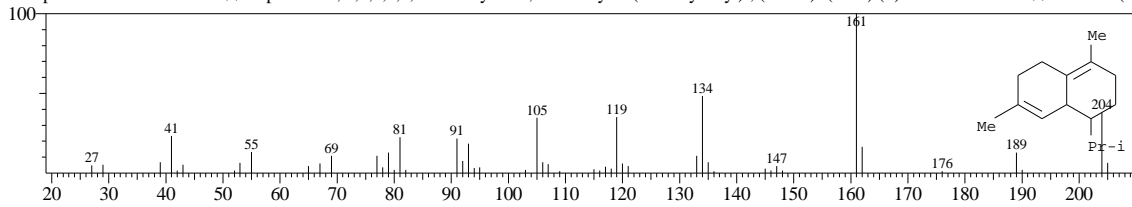
Hit#:1 Entry:52570 Library:NIST147.LIB
SI:91 Formula:C15H26O CAS:5937-11-1 MolWeight:222 RetIndex:0
CompName:tau.-Cadinol \$\$ 4-Isopropyl-1,6-dimethyl-1,2,3,4,4a,7,8,8a-octahydro-1-naphthalenol # \$\$



Hit#:2 Entry:100887 Library:WILEY7.LIB

SI:88 Formula:C15H24 CAS:483-76-1 MolWeight:204 RetIndex:0

CompName:delta-Cadinene \$ Naphthalene, 1,2,3,5,6,8a-hexahydro-4,7-dimethyl-1-(1-methylethyl)-, (1S-cis)- (CAS) (+)-delta-Cadinene \$ Cadina-1(10



Hit#:3 Entry:42315 Library:NIST147.LIB

SI:88 Formula:C15H24 CAS:30021-74-0 MolWeight:204 RetIndex:0

CompName:Naphthalene, 1,2,3,4,4a,5,6,8a-octahydro-7-methyl-4-methylene-1-(1-methylethyl)-, (1.alpha.,4a.alpha.,8a.alpha.)- \$ gamma-Muurolene \$ 1-

