

3. Results

50 patients with chronic renal failure (29 males and 21 females) minimum age 24 years maximum age 79 years and mean of age 50 years from IBN SINA Hospital were enrolled in the study as a test group and 20 healthy people as controls (13 males and 7 females).

Table (3.1): Show distribution of population with CRF into age groups

Age Range	Frequency	Percent
20-40	14	28
40-60	22	44
60-80	14	28
Total	50	100

Table (3.2): Show distribution of control group into age groups

Age Range	Frequency	Percent
20-40	5	25
40-60	10	50
60-80	5	25
Total	20	100

Table (3.3): Show mean of uric acid (mg/dl) in patients with chronic renal failure before dialysis compare with control:

Uric acid (mg/dl)	Mean \pm SD		P.value
	Control	Pre dialysis	
	3.9 \pm 0.9	9.4 \pm 2.3	

- Independent T test was used.
- P value considered significant level ≤ 0.05

Table (3.4): Show mean of serum uric acid (mg/dl) in patients with chronic renal failure before dialysis compare with after dialysis

Uric acid	Mean \pm SD mg /dl	P.value
Pre dialysis	9.4 \pm 2.3	0.00
Post dialysis	2.9 \pm 1.3	

- Paired sample T test was used.
- P value considered significant level ≤ 0.05

Table (3.5): Show mean of serum calcium (mg/dl) in patients with chronic renal failure before dialysis compare with control

Calcium (mg/dl)	Mean \pm SD		P.value
	Control	Pre dialysis	
	9.8 \pm 0.8	5.4 \pm 0.85	

- Independent T test was used.
- P value considered significant level ≤ 0.05

Table (3.6): Show mean of serum calcium (mg/dl) in patients with chronic renal failure before dialysis compare with after dialysis

Calcium	Mean \pm SD mg /dl	P.value
Pre dialysis	5.4 \pm 0.85	0.00
Post dialysis	4.4 \pm 1.07	

- Paired sample T test was used.
- P value considered significant level ≤ 0.05

Table (3.7): Show mean of serum phosphate (mg/dl) in patients with chronic renal failure before dialysis compare with control

Phosphate (mg/dl)	Mean \pm SD		P.value
	Control	Pre dialysis	
	3.7 \pm 0.4	5.7 \pm 2.04	

- Independent T test was used.
- P value considered significant level ≤ 0.05

Table (3.8): Show mean of serum phosphate (mg/dl) in patients with chronic renal failure before dialysis compare with after dialysis

Phosphate	Mean \pm SD mg \dl	P.value
Pre dialysis	5.7 \pm 2.04	0.00
Post dialysis	3.1 \pm 1.30	

- Paired sample T test was used.
- P value considered significant level ≤ 0.05

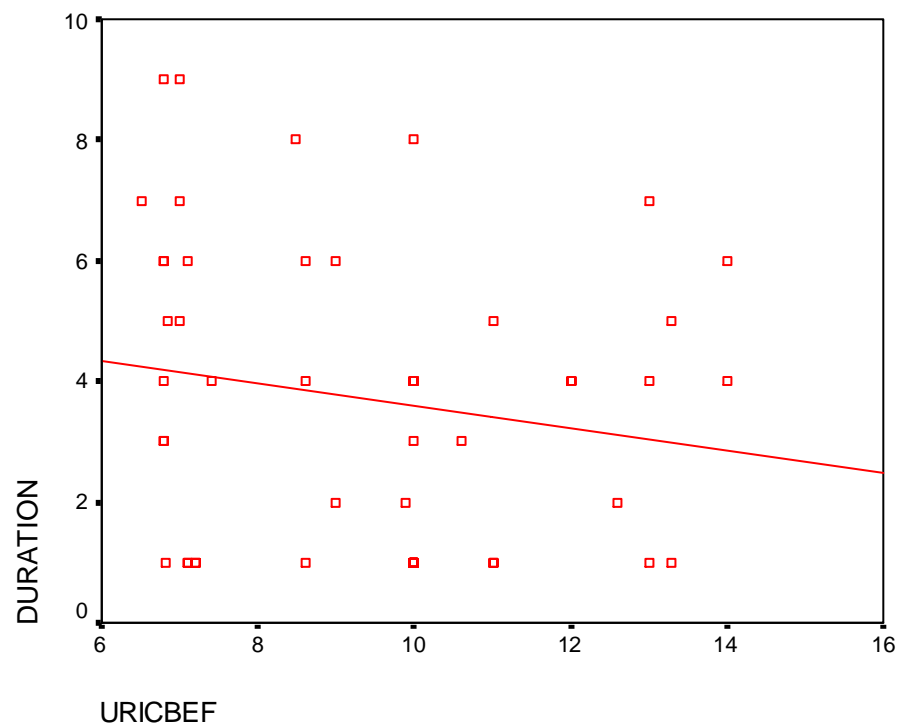
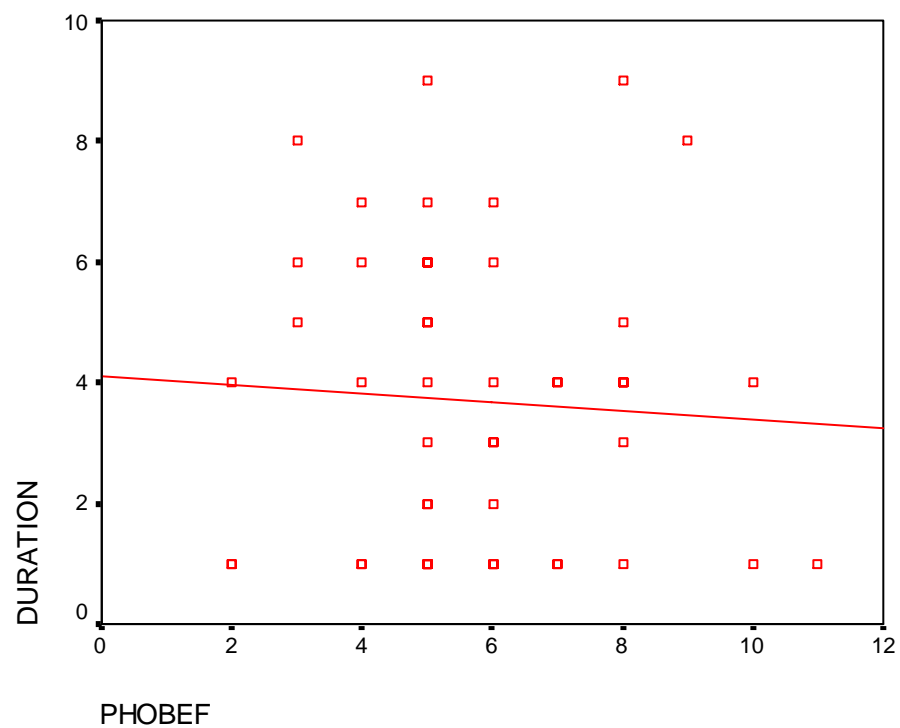
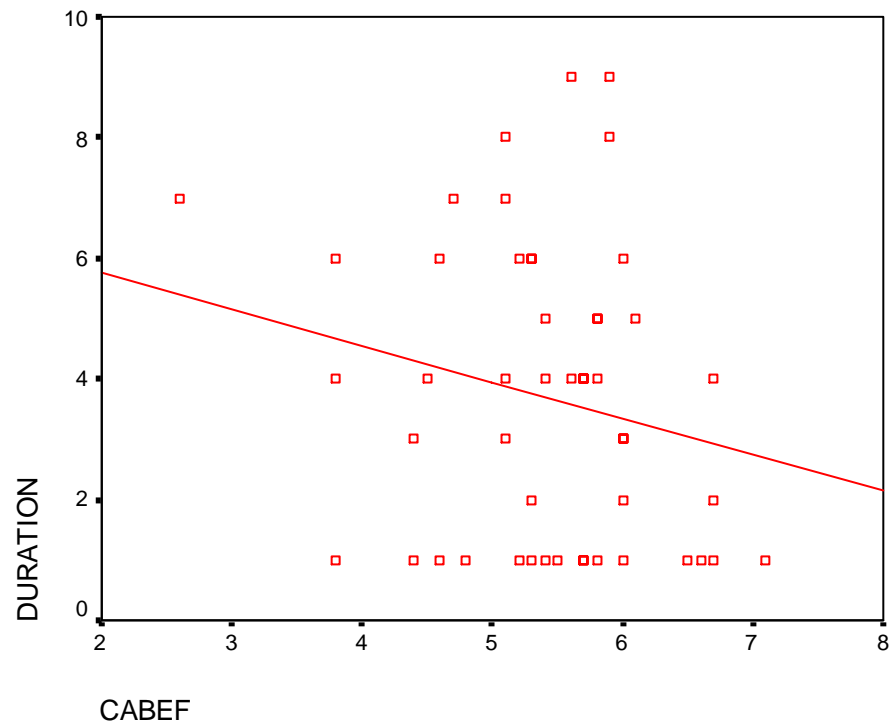


Figure (3.1): scatter plot show no correlation between duration of disease (years) and Serum uric acid (mg/dl) .
(P.value =0.23 $r = - 0.17$)



**Figure (3.2): Scatter plot show no correlation between duration of disease (years) and Serum phosphate (mg/dl) .
(P.value = 0.68 r = - 0.06)**



**Figure (3.3): scatter plot show no correlation between duration of disease (years) and Serum calcium (mg/dl) .
(P.value = 0.14 r = - 0.21)**

